

# Parts List

8124.400 Mega





---

# Table of Contents

|   |           |
|---|-----------|
| <b>Introduction</b> .....                         | <b>2</b>  |
| Specially approved products.....                  | 2         |
| <b>Product Description</b> .....                  | <b>3</b>  |
| The data plate.....                               | 3         |
| <b>Exploded Views</b> .....                       | <b>4</b>  |
| Drive unit.....                                   | 4         |
| Support bearing, labels and mechanical seals..... | 5         |
| Connection housing and cable entry.....           | 6         |
| N.....  | 7         |
| H.....  | 8         |
| Stand.....  | 9         |
| <b>Spare Parts</b> .....                          | <b>10</b> |
| List of parts.....                                | 10        |

# Introduction

## **Purpose of this manual**

The purpose of this manual is to provide necessary information on spare parts and accessories order.

## **Disclaimer**

Always use genuine Grindex parts. The use of other spare parts or accessories can invalidate any claims for warranty or compensation. Grindex does not take any responsibility for damages that are caused by the use of non-original parts. For more information, contact your local sales and service representative.

## **Data for ordering spare parts**

The following information is needed for spare part orders:

- Serial number of the product
- Part number
- Quantity of bulk material, see \* in tables

## **Specially approved products**

### **Qualification of personnel**

Only Grindex or Grindex-authorized service personnel may undertake repair work on Ex-approved products.

### **Dimensional accuracy inspection**

Spare parts marked with (Ex) after the part number are subject to dimensional accuracy inspection.

# Product Description

## Products included

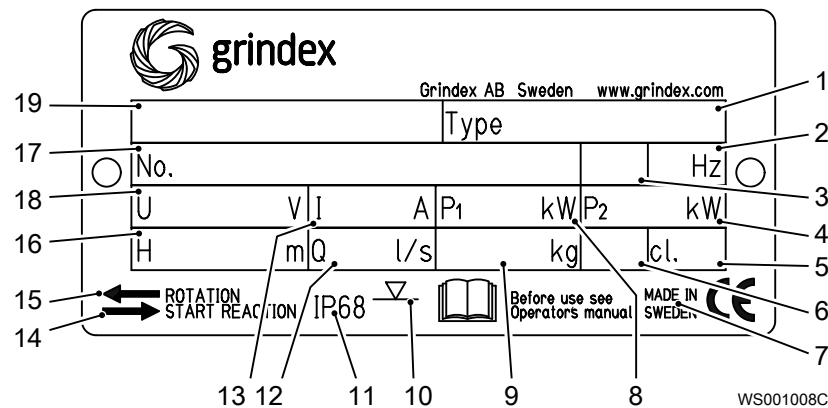
| Pump model    | Standard | EX | MSHA | Drainage | Sludge |
|---------------|----------|----|------|----------|--------|
| Mega 8124.400 | X        |    |      | X        |        |

## The data plate

### Introduction

The data plate is a metal label located on the main body of the pump. The data plate lists key product specifications.

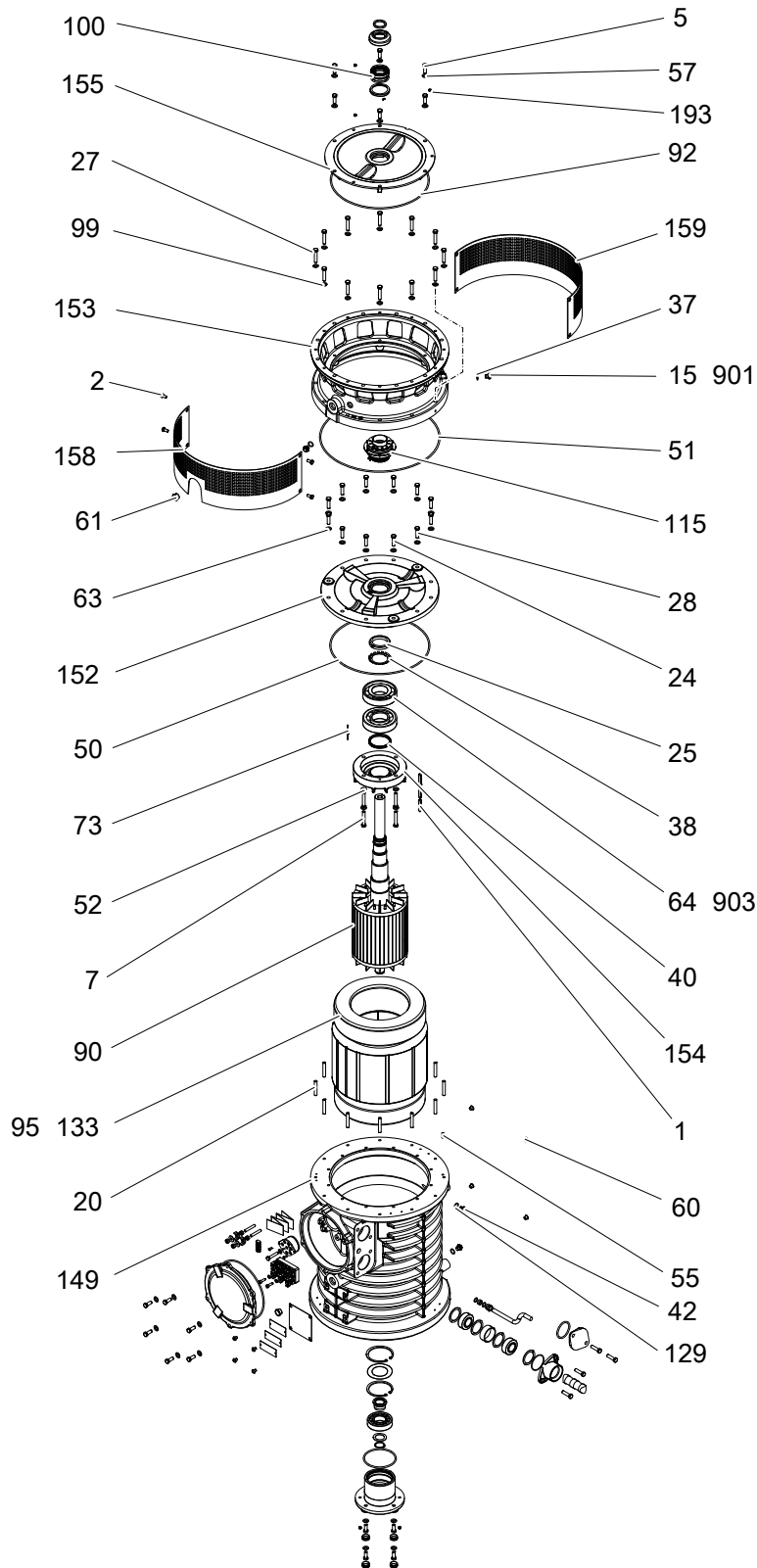
### The data plate



1. Pump type number
2. Frequency
3. Phases, type of current
4. Rated shaft power
5. Thermal class
6. Locked rotor code-letter
7. Country of origin
8. Maximum power consumption
9. Product weight
10. Maximum submersion depth
11. Degree of protection
12. Maximum capacity
13. Rated current
14. Direction of the start reaction
15. Direction of the impeller rotation
16. Maximum head
17. Serial number
18. Rated voltage
19. Pump model

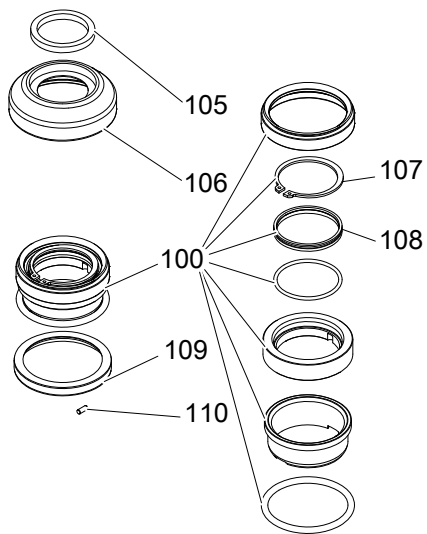
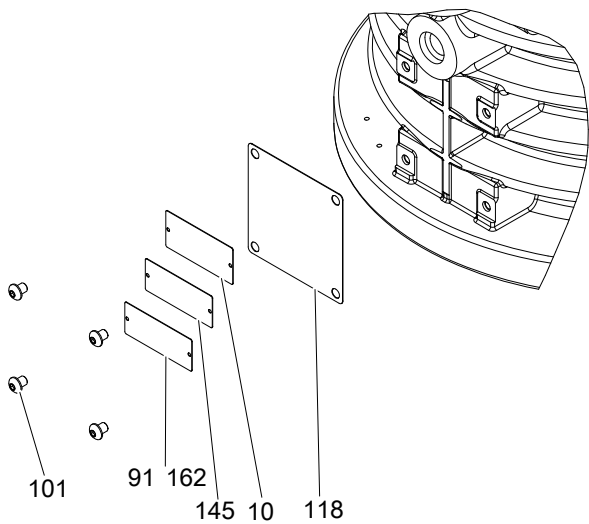
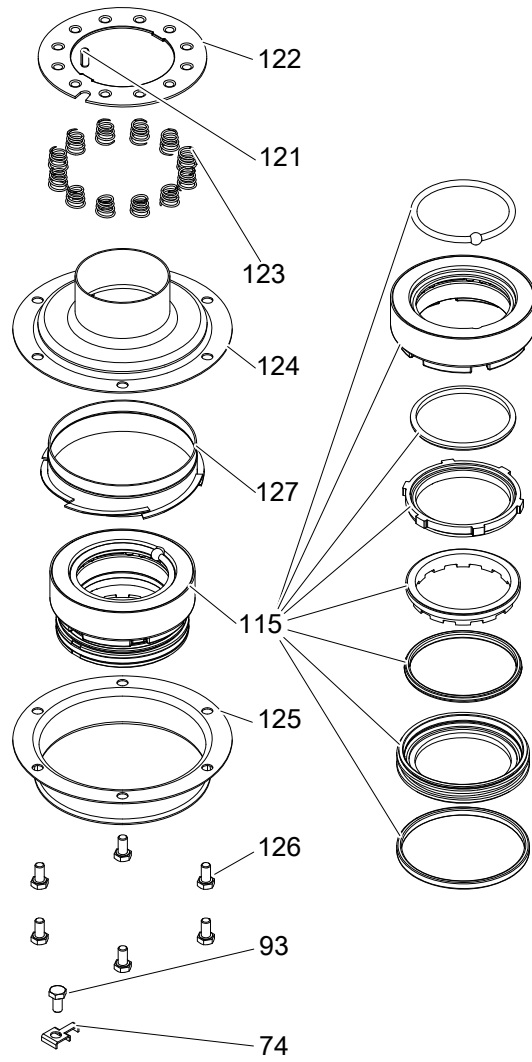
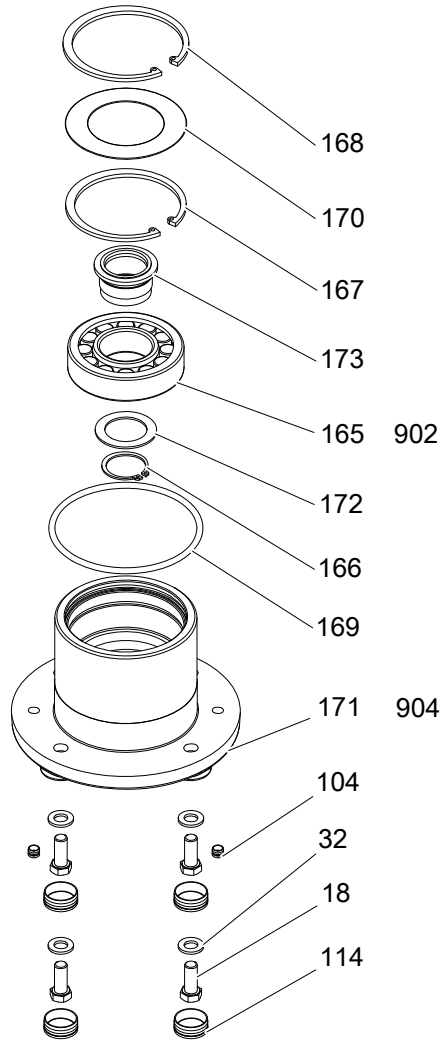
# Exploded Views

## Drive unit



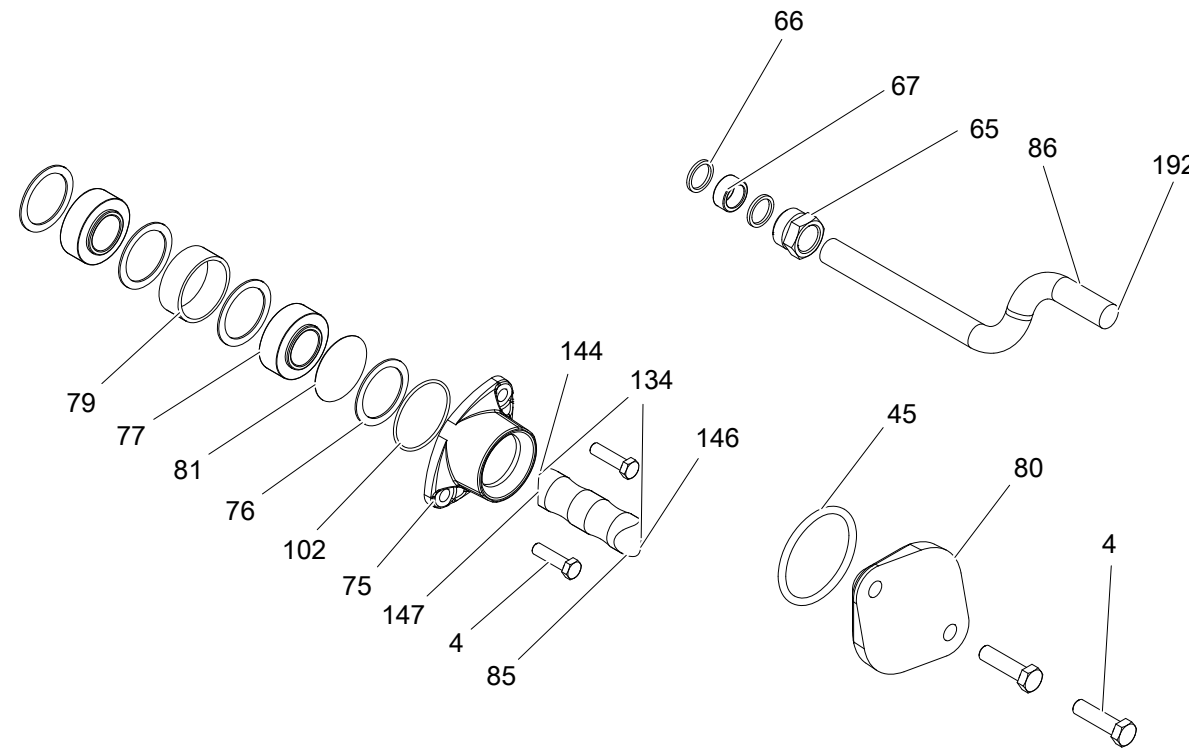
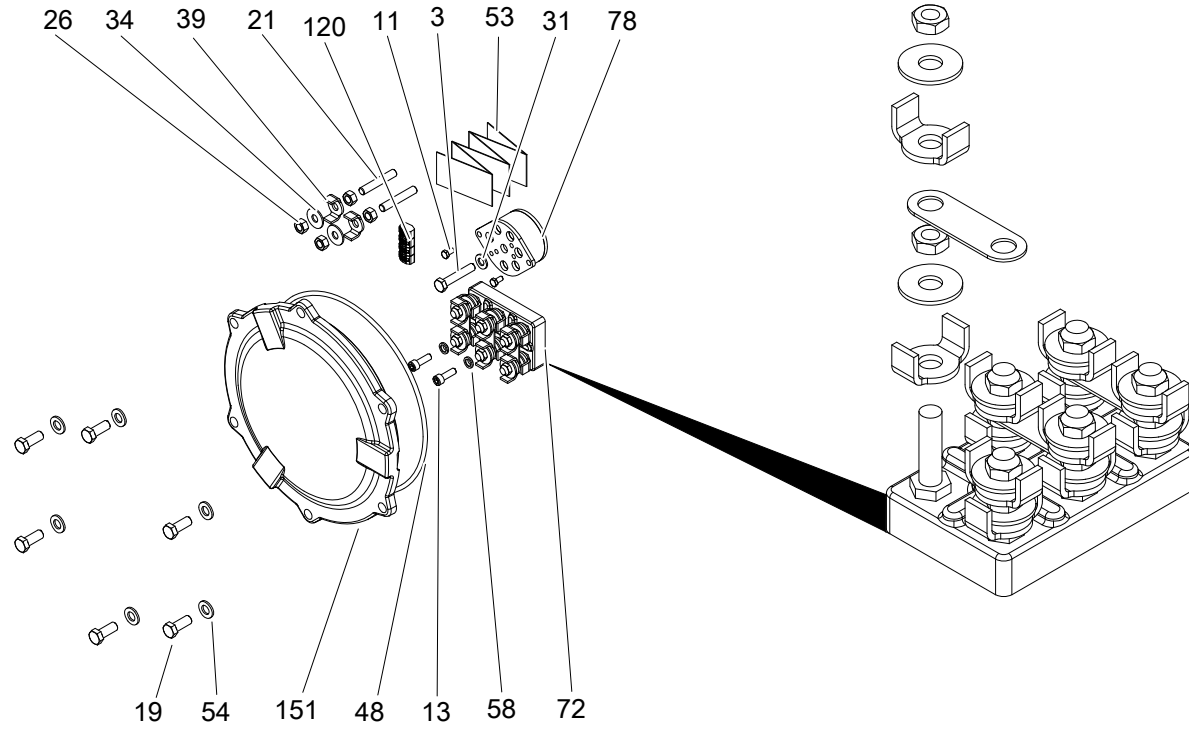
20188A

# Support bearing, labels and mechanical seals



20189A

# Connection housing and cable entry

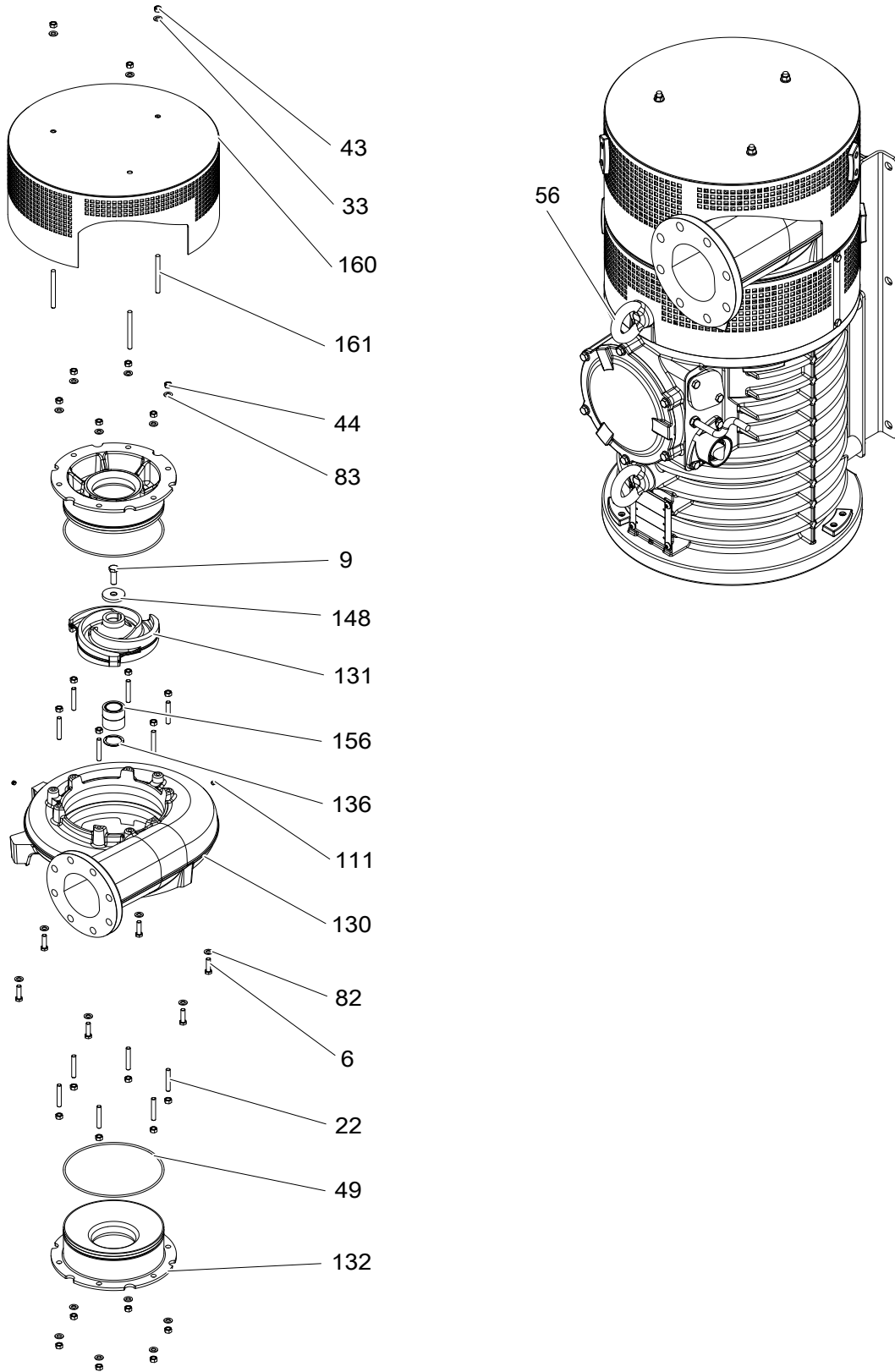


20192A

Figure 1: Standard

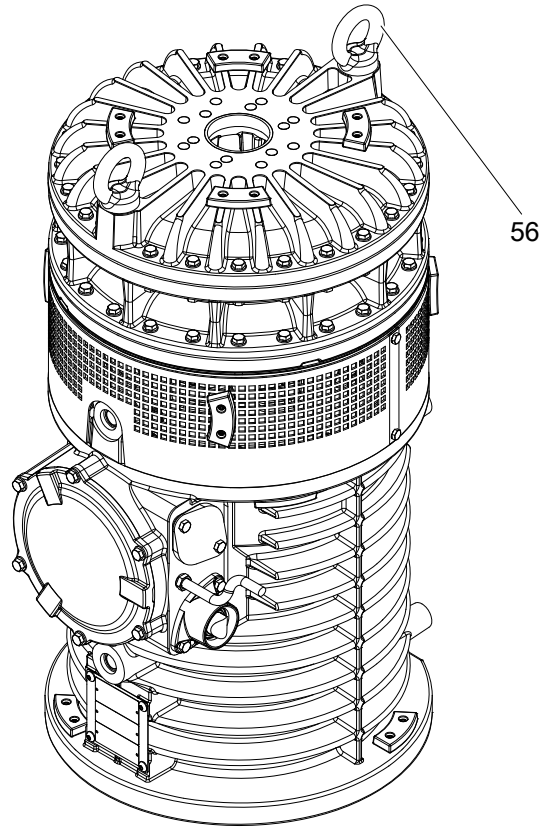
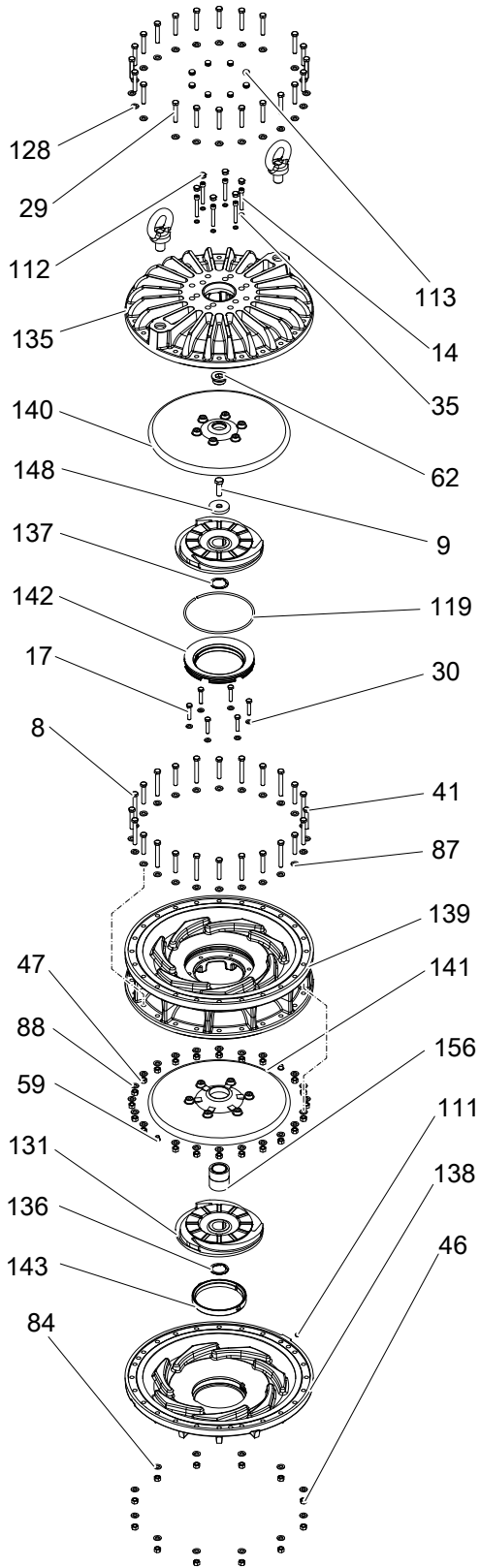


N



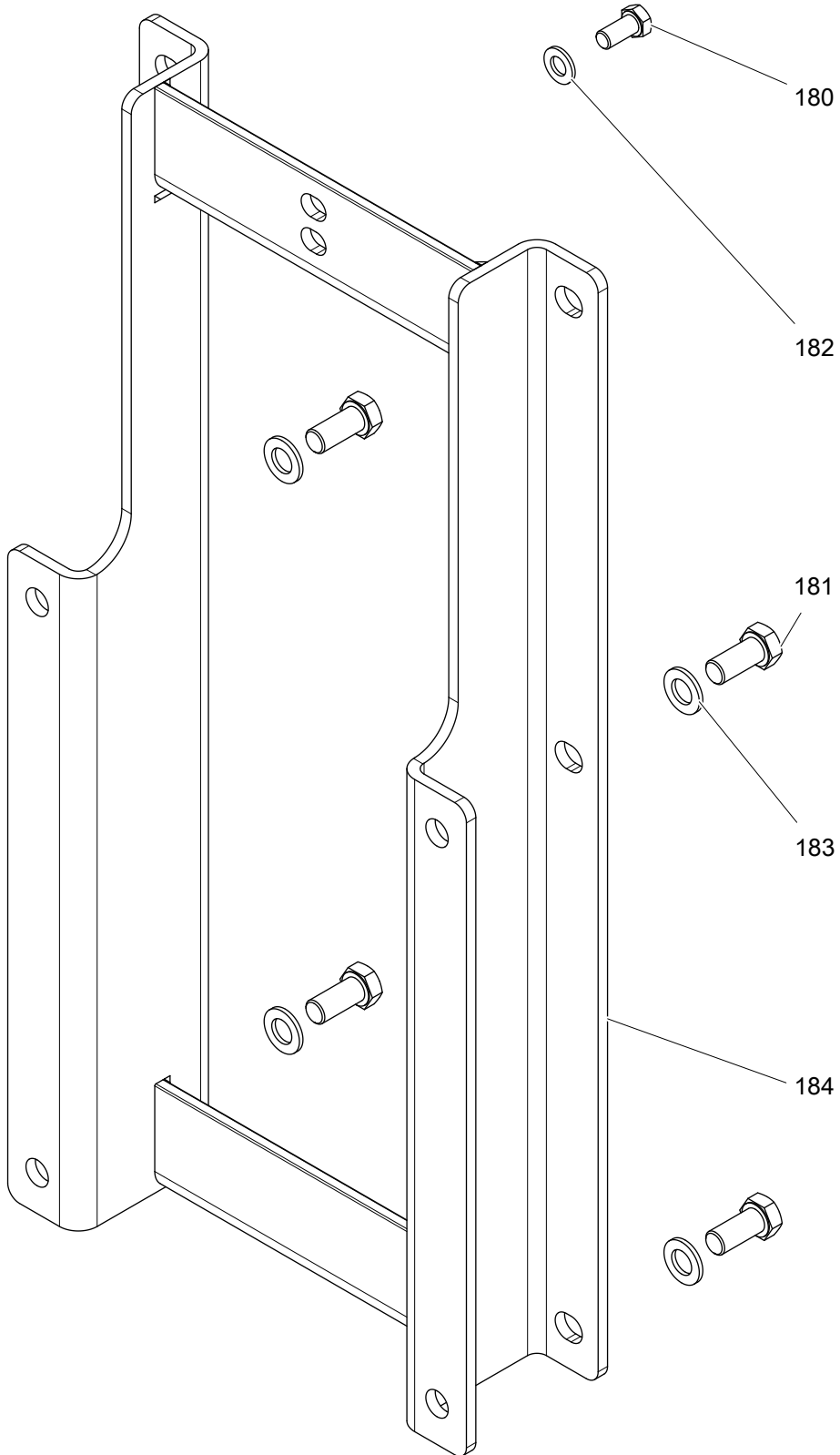
20191A

# H



20190A

# Stand



20195A

# Spare Parts

## List of parts

| Pos. No | Part. No  | Denomination                                    | Qty/Version |
|---------|-----------|---|-------------|
|         |           |   | 400         |
| 1       | 410 193   | Parallel key 12X8X63-A4                         | 2           |
| 2       | 410 195   | Hexagon head screw<br>M10X20-A4-70              | 4           |
| 3       | 410 196   | Hexagon head screw<br>M10X55-A2-70              | 1           |
| 4       | 132 260   | Hexagon head screw<br>M12X45-A2-70              | 4           |
| 5       | 410 197   | Hexagon head screw<br>M12X35-A2-70              | 6           |
| 6       | 132 260   | Hexagon head screw<br>M12X45-A2-70              | 6           |
|         |           | Hydraulic end material: Full<br>stainless steel |             |
|         |           | Hydraulic end material:<br>Grey cast iron       |             |
| 6       | 410 071   | Hexagon head screw<br>M12X45-A4-70              | 6           |
|         |           | Hydraulic end material: Full<br>stainless steel |             |
| 7       | 410 198   | Hexagon head screw<br>M12X70-A2-70              | 4           |
| 8       | 410 199   | Hexagon head screw<br>M12X90-A2-70              | 12          |
| 9       | 410 200   | Hexagon head screw<br>M16X50-A4-70              | 1           |
| 10      | 50 888 00 | Plate-blank                                     | 1           |
| 11      | 50 020 20 | Hexagon head screw<br>M6X12-A4-70               | 2           |
| 13      | 410 204   | Slotted head screw<br>M10X30-A4-70              | 2           |
| 14      | 410 205   | Hex.socket hd screw<br>M10X70-A2-70             | 6           |
| 15      | 133 063   | Inspection screw                                | 2           |
| 17      | 410 196   | Hexagon head screw<br>M10X55-A2-70              | 6           |
| 18      | 410 197   | Hexagon head screw<br>M12X35-A2-70              | 4           |
| 19      | 410 197   | Hexagon head screw<br>M12X35-A2-70              | 6           |
| 21      | 410 267   | Stud 10X60-A2-70                                | 2           |
| 22      | 132 442   | Stud M12X80-A2-70                               | 12          |
|         |           | Hydraulic end material: Full<br>stainless steel |             |
|         |           | Hydraulic end material:<br>Grey cast iron       |             |

| Pos. No | Part. No  | Denomination                    | Qty/Version  |
|---------|-----------|---------------------------------|--|
|         |           |                                 | 400  |
| 22      | 410 268   | Stud 12X80-A4-70                | Hydraulic end material: Full stainless steel<br>12   |
| 24      | 132 260   | Hexagon head screw M12X45-A2-70 | 3  |
| 25      | 410 207   | Round nut M70X2                 | 1  |
| 26      | 50 022 22 | Hexagon nut M10-A4-70           | 4  |
| 27      | 410 532   | Hexagon head screw M12X60-A2-70 | 12   |
| 28      | 132 260   | Hexagon head screw M12X45-A2-70 | 9  |
| 29      | 410 198   | Hexagon head screw M12X70-A2-70 | 22   |
| 30      | 50 022 26 | Plain washer 10-A4-170HV        | 6  |
| 32      | 132 274   | Plain washer 12-A2-170          | 4  |
| 33      | 132 274   | Plain washer 12-A2-170          | Hydraulic end material: Full stainless steel<br>Hydraulic end material: Grey cast iron<br>3  |
| 33      | 410 210   | Plain washer 12-A4-170HV        | Hydraulic end material: Full stainless steel<br>3  |
| 34      | 410 211   | Plain washer 10.5X28X2          | 2  |
| 35      | 410 544   | Lock washer                     | 6  |
| 37      | 133 064   | O-ring 19.2X3 NBR               | 2  |
| 38      | 410 229   | Lock washer                     | 1  |
| 39      | 410 245   | Cable washer                    | 2  |
| 40      | 410 251   | Seal ring                       | 1  |
| 41      | 410 198   | Hexagon head screw M12X70-A2-70 | 12   |
| 42      | 133 063   | Inspection screw                | 2  |
| 43      | 132 280   | Hexagon nut M12-A2-70           | Hydraulic end material: Full stainless steel<br>Hydraulic end material: Grey cast iron<br>3  |
| 43      | 410 011   | Hexagon nut M12-A4-70           | Hydraulic end material: Full stainless steel<br>3  |
| 44      | 132 280   | Hexagon nut M12-A2-70           | Hydraulic end material: Full stainless steel<br>Hydraulic end material: Grey cast iron<br>24 |
| 44      | 410 011   | Hexagon nut M12-A4-70           | Hydraulic end material: Full stainless steel<br>24   |
| 45      | 410 238   | O-ring 69.2X5.7 NBR             | 1  |
| 46      | 132 280   | Hexagon nut M12-A2-70           | 12   |
| 47      | 132 280   | Hexagon nut M12-A2-70           | 22   |

| Pos. No | Part. No     | Denomination                   | Qty/Version  |
|---------|--------------|--------------------------------|--|
|         |              |                                | 400  |
| 48      | 410 240      | O-ring 269.3X5.7 NBR           | 1  |
| 49      | 50 037 32    | O-ring 279.3X5.7 NBR           | 2  |
| 50      | 410 241      | O-ring 419.3X5.7 NBR           | 1  |
| 51      | 410 242      | O-ring 499.3X5.7 NBR           | 1  |
| 52      | 132 274      | Plain washer 12-A2-170         | 4  |
| 53      | 51 675 01    | Connection plate               | 1  |
| 54      | 132 274      | Plain washer 12-A2-170         | 6  |
| 55      | 410 191      | Grooved pin                    | 1  |
| 56      | 410 209      | Lifting eye bolt               | 2  |
| 57      | 132 274      | Plain washer 12-A2-170         | 6  |
| 58      | 410 252      | Sealing washer                 | 2  |
| 59      | 410 234      | Protective plug                | 2  |
| 61      | 410 235      | Protective plug                | 2  |
| 62      | 410 236      | Plug                           | 1  |
| 63      | 132 274      | Plain washer 12-A2-170         | 12   |
| 64      | 410 250      | Ball bearing                   | 2  |
| 65      | 51 204 00    | Gland screw                    | 1  |
| 66      | 410 212      | Plain washer 16.5X20.5X2-A2-70 | (14)-16mm Aux. cable entry SUBCAB 7x1.5mm OD=15,50 - 16,50mm<br>2  |
| 66      | 132 455      | Plate                          | Plugged aux. cable entry<br>2  |
| 67      | 410 254      | Seal sleeve                    | (14)-16mm Aux. cable entry SUBCAB 7x1.5mm OD=15,50 - 16,50mm<br>1  |
| 67      | 132 454      | Plug                           | Plugged aux. cable entry<br>1  |
| 72      | 51 201 00    | Terminal board unit            | 1  |
|         | 72,1 410 208 | Hexagon nut                    | 12   |
|         | 72,2 410 211 | Plain washer 10.5X28X2         | 12   |
|         | 72,3 410 245 | Cable washer                   | 12   |
|         | 72,4 410 247 | Closing link                   | 3  |
|         | 72,5 410 248 | Connection term boar           | 1  |
| 73      | 51 255 00    | Detector unit                  | 1  |
| 74      | 51 264 00    | Lock washer                    | 1  |
| 75      | 51 472 05    | Entrance flange                | 1-2  |
| 76      | 410 220      | Plain washer 46.5X70X2-A2-70   | Cable entry (32)-35mm<br>Cable entry (32)-35mm<br>4-8  |
| 76      | 410 223      | Plain washer 54.5X70X2-A2-70   | Cable entry (41)-44mm<br>Cable entry (35)-38mm<br>Cable entry (38)-41mm<br>Cable entry (41)-44mm<br>Cable entry (35)-38mm<br>4-8 |

| Pos. No | Part. No  | Denomination             | Qty/Version   |
|---------|-----------|--------------------------|---|
|         |           |                          | 400   |
| 77      | 410 590   | Seal sleeve              | Cable entry (32)-35mm<br>Cable entry (32)-35mm<br>2-4   |
| 77      | 410 593   | Seal sleeve              | Cable entry (41)-44mm<br>Cable entry (41)-44mm<br>2-4   |
| 77      | 410 591   | Seal sleeve              | Cable entry (35)-38mm<br>Cable entry (35)-38mm<br>2-4   |
| 77      | 410 592   | Seal sleeve              | Cable entry (38)-41mm<br>2  |
| 78      | 51 200 00 | El-lead through          | 6-leads 50 Hz 380V-400V D<br>660V-690V Y P2=90kW<br>6-leads 60 Hz 440V-460V D<br>P2=104kW/140hp<br>6-leads 50 Hz 400V-440V D<br>P2=90kW<br>6-leads 60 Hz 575V D<br>P2=104kW/140hp<br>6-leads 50 Hz 550V D<br>P2=90kW<br>6-leads 60 Hz 380V D<br>P2=104kW/140hp<br>6-leads 50 Hz 400V D<br>P2=90kW<br>6-leads 60 Hz 400V D<br>P2=104kW/140hp<br>6-leads 50 Hz 500V-550V D<br>P2=90kW<br>6-leads 60 Hz 575V-600V D<br>P2=104kW/140hp<br>1 |
| 78      | 51 250 00 | El-lead through          | 12-leads 50 Hz 500V Y//<br>1000V YSER P2=90kW<br>1  |
| 79      | 51 488 01 | Ring                     | 1-2   |
| 80      | 51 207 00 | Cover                    | 1   |
| 81      | 51 249 00 | Plate 70 MM              | 1-2   |
| 82      | 132 274   | Plain washer 12-A2-170   | Hydraulic end material: Full<br>stainless steel<br>Hydraulic end material:<br>Grey cast iron<br>6   |
| 82      | 410 210   | Plain washer 12-A4-170HV | Hydraulic end material: Full<br>stainless steel<br>6-12   |
| 83      | 132 274   | Plain washer 12-A2-170   | Hydraulic end material:<br>Grey cast iron<br>12   |
| 84      | 132 274   | Plain washer 12-A2-170   | 12  |
| 85      | 410 855   | Motor cable              | Power cable x 2 SUBCAB<br>4G35+S(2x0,5) 35 - 37mm<br>Star delta possible<br>Power cable x 1 SUBCAB<br>4G35+S(2x0,5) 35 - 37mm<br>*  |

| Pos. No | Part. No  | Denomination                              | Qty/Version   |    |
|---------|-----------|---|---|----|
|         |           |   | 400   |    |
| 85      | 410 856   | Motor cable                               | Power cable x 1 SUBCAB<br>3x50+2G35/2+S(2x0,5) 35<br>- 37mm   | *  |
| 85      | 410 857   | Motor cable                               | Power cable x 1 SUBCAB<br>3x70+2G35/2+S(2x0,5) 38<br>- 41mm   | *  |
| 85      | 410 136   | Motor cable                               | Power cable x 2 SUBCAB<br>4AWG/3-2-1-GC 32,80 -<br>34,80mm Star delta<br>possible   | *  |
| 85      | 410 355   | Motor cable                               | Power cable x 1 SUBCAB<br>1AWG/3-2-1-GC 40,70 -<br>42,70mm<br>Power cable x 2 SUBCAB<br>1AWG/3-2-1-GC 40,70 -<br>42,70mm Star delta<br>possible | *  |
| 85      | 410 854   | Motor cable                               | Power cable x 2 SUBCAB<br>4G25+S(2x0,5) 32 - 34mm<br>Star delta possible  | *  |
| 85      | 410 865   | Motor cable                               | Power cable x 1 SUBCAB<br>S3x35+3x16/3+S(4x0,5)<br>32 - 34mm  | *  |
| 85      | 410 866   | Motor cable                               | Power cable x 1 SUBCAB<br>S3x50+3x25/3+S(4x0,5)<br>38 - 40mm  | *  |
| 85      | 410 867   | Motor cable                               | Power cable x 1 SUBCAB<br>S3x70+3x35/3+2S(2x0,5)<br>42 - 44mm   | *  |
| 86      | 410 350   | Control cable subcab 7X1,5<br>OD=15-17 MM |   | *  |
| 87      | 132 274   | Plain washer 12-A2-170                    |   | 24 |
| 88      | 132 274   | Plain washer 12-A2-170                    |   | 22 |
| 90      | 51 219 00 | Shaft unit SS                             | Hydraulic end material: Full<br>stainless steel<br>Hydraulic end material:<br>Partial stainless steel   | 1  |
| 90      | 51 219 01 | Shaft unit                                | Hydraulic end material:<br>Grey cast iron   | 1  |
| 92      | 410 241   | O-ring 419.3X5.7 NBR                      |   | 1  |
| 93      | 50 020 20 | Hexagon head screw<br>M6X12-A4-70         |   | 1  |
| 95      | 51 262 00 | Stator 42-26-2f                           | 6-leads 60 Hz 2-poles 380V<br>D P2=104kW/140hp  | 1  |
| 95      | 51 262 10 | Stator 42-26-2f                           | 12-leads 60 Hz 2-poles<br>460V DSER 380V Y//<br>P2=104kW/140hp<br>12-leads 60 Hz 2-poles<br>230V D// P2=104kW/140hp                             | 1  |



| Pos. No | Part. No  | Denomination  | Qty/Version |
|---------|-----------|---|-------------|
|         |           |   | 400         |
| 95      | 51 262 01 | Stator 42-26-2f<br>6-leads 50 Hz 2-poles<br>380V-400V D 660V-690V Y<br>P2=90kW<br>6-leads 60 Hz 2-poles<br>440V-460V D P2=104kW/<br>140hp | 1           |
| 95      | 51 262 02 | Stator 42-26-2f<br>6-leads 50 Hz 2-poles 400V<br>D P2=90kW<br>6-leads 60 Hz 2-poles 400V<br>D P2=104kW/140hp                              | 1           |
| 95      | 51 262 03 | Stator 42-26-2f<br>6-leads 50 Hz 2-poles<br>400V-440V D P2=90kW   | 1           |
| 95      | 51 262 04 | Stator 42-26-2f<br>6-leads 60 Hz 2-poles 575V<br>D P2=104kW/140hp   | 1           |
| 95      | 51 262 05 | Stator 42-26-2f<br>6-leads 50 Hz 2-poles<br>500V-550V D P2=90kW<br>6-leads 60 Hz 2-poles<br>575V-600V D P2=104kW/<br>140hp                | 1           |
| 95      | 51 262 06 | Stator 42-26-2f<br>6-leads 50 Hz 2-poles 550V<br>D P2=90kW  | 1           |
| 95      | 51 262 07 | Stator 42-26-2f<br>12-leads 50 Hz 2-poles<br>500V Y// 1000V YSER<br>P2=90kW   | 1           |
| 99      | 132 274   | Plain washer 12-A2-170  | 12          |
| 100     | 51 232 01 | Mechanical seal   | 1           |
| 101     | 410 206   | Hex.socket hd screw<br>M10X12-A2-70   | 4           |
| 102     | 410 562   | O-ring 69.5X3 NBR   | 1-2         |
| 104     | 410 937   | Plug  | 2           |
| 105     | 51 261 00 | Ring<br>Hydraulic end material: Full<br>stainless steel<br>Hydraulic end material:<br>Partial stainless steel                             | 1           |
| 105     | 51 263 00 | Plain washer<br>Hydraulic end material:<br>Grey cast iron   | 1           |
| 106     | 51 245 01 | Protective casing PU  | 1           |
| 106     | 51 245 00 | Protective casing NBR   | 1           |
| 109     | 51 229 00 | Wear protection   | 1           |
| 110     | 410 189   | Parallel pin CP-<br>H8-4X10-1650  | 1           |
| 112     | 410 939   | Protective plug M20   | 6           |
| 113     | 410 939   | Protective plug M20   | 8           |
| 113     | 410 940   | Protective plug M20   | 8           |
| 114     | 410 911   | Protective plug M30   | 4           |
| 115     | 50 395 02 | Mechanical seal   | 1           |

| Pos. No | Part. No  | Denomination                      | Qty/Version  |   |
|---------|-----------|-----------------------------------|--|---|
|         |           |                                   | 400  |   |
| 118     | 51 272 00 | Plate                             | 1  |   |
| 119     | 51 833 00 | Spring ring, solid                | 1  |   |
| 120     | 410 916   | Terminal block                    | 4  |   |
| 121     | 410 192   | Tension pin                       | 1  |   |
| 122     | 51 223 00 | Washer                            | 1  |   |
| 123     | 50 368 00 | Compression spring                | 12   |   |
| 124     | 51 222 00 | Flange compl.                     | 1  |   |
| 125     | 51 227 00 | Flange                            | 1  |   |
| 126     | 50 020 20 | Hexagon head screw<br>M6X12-A4-70 | 6  |   |
| 127     | 51 224 00 | Impeller unit                     | 1  |   |
| 128     | 132 274   | Plain washer 12-A2-170            | 22   |   |
| 129     | 133 064   | O-ring 19.2X3 NBR                 | 2  |   |
| 130     | 51 210 00 | Pump housing                      | Hydraulic end material: Full<br>stainless steel  | 1 |
| 130     | 51 210 01 | Pump housing                      | Hydraulic end material: Full<br>stainless steel Drilled acc.<br>to: EN 1092-2 tab. 9 ASME<br>B 16.5-1996;tab.8 | 1 |
| 130     | 51 209 00 | Pump housing                      | Hydraulic end material:<br>Grey cast iron  | 1 |
| 130     | 51 209 01 | Pump housing                      | Hydraulic end material:<br>Grey cast iron Drilled acc.<br>to: ASME B 16.5-1996;tab.<br>8 EN 1092-2 tab. 9      | 1 |
| 131     | 51 239 06 | Impeller                          | N 50 Hz Mtrl. Alloyed white<br>iron (hardened, high<br>chrome)   | 1 |
| 131     | 51 239 07 | Impeller                          | N 60 Hz Mtrl. Alloyed white<br>iron (hardened, high<br>chrome)   | 1 |
| 131     | 51 645 00 | Impeller                          | H 50 Hz Mtrl. Alloyed white<br>iron (hardened, high<br>chrome)   | 2 |
| 131     | 51 645 10 | Impeller                          | H 60 Hz Mtrl. Alloyed white<br>iron (hardened, high<br>chrome)   | 2 |
| 131     | 51 239 01 | Impeller                          | N 50 Hz Mtrl. Stainless<br>steel, castings   | 1 |
| 131     | 51 646 00 | Impeller                          | H 50 Hz Mtrl. Stainless<br>steel, castings   | 2 |
| 131     | 51 646 10 | Impeller                          | H 60 Hz Mtrl. Stainless<br>steel, castings   | 2 |
| 132     | 51 226 00 | Suction cover uncoat              |  | 2 |
| 132     | 51 225 00 | Suction cover NBR                 |  | 2 |
| 132     | 51 225 01 | Suction cover PU                  |  | 2 |

| Pos. No | Part. No  | Denomination   | Qty/Version |
|---------|-----------|--|-------------|
|         |           |  | 400         |
| 133     | 50 221 07 | End sleeve 25 MM2; L=15<br>MM                                  | 6           |
|         |           | 6-leads 60 Hz 2-poles 575V<br>D P2=104kW/140hp                 |             |
|         |           | 6-leads 50 Hz 2-poles<br>380V-400V D 660V-690V Y<br>P2=90kW    |             |
|         |           | 6-leads 60 Hz 2-poles<br>440V-460V D P2=104kW/<br>140hp        |             |
|         |           | 6-leads 60 Hz 2-poles 380V<br>D P2=104kW/140hp                 |             |
|         |           | 6-leads 50 Hz 2-poles 400V<br>D P2=90kW                        |             |
|         |           | 6-leads 60 Hz 2-poles 400V<br>D P2=104kW/140hp                 |             |
|         |           | 12-leads 60 Hz 2-poles<br>460V DSER 380V Y//<br>P2=104kW/140hp |             |
|         |           | 6-leads 50 Hz 2-poles<br>400V-440V D P2=90kW                   |             |
|         |           | 12-leads 60 Hz 2-poles<br>230V D// P2=104kW/140hp              |             |
|         |           | 6-leads 50 Hz 2-poles<br>500V-550V D P2=90kW                   |             |
|         |           | 6-leads 60 Hz 2-poles<br>575V-600V D P2=104kW/<br>140hp        |             |

| Pos. No | Part. No  | Denomination   | Qty/Version |
|---------|-----------|--|-------------|
|         |           |  | 400         |
| 133     | 50 221 07 | End sleeve 25 MM2; L=15 MM                               | 12          |
|         |           | 6-leads 60 Hz 2-poles 575V D P2=104kW/140hp              |             |
|         |           | 6-leads 50 Hz 2-poles 380V-400V D 660V-690V Y P2=90kW    |             |
|         |           | 6-leads 60 Hz 2-poles 440V-460V D P2=104kW/140hp         |             |
|         |           | 6-leads 60 Hz 2-poles 380V D P2=104kW/140hp              |             |
|         |           | 6-leads 50 Hz 2-poles 400V D P2=90kW                     |             |
|         |           | 6-leads 60 Hz 2-poles 400V D P2=104kW/140hp              |             |
|         |           | 12-leads 60 Hz 2-poles 460V DSER 380V Y// P2=104kW/140hp |             |
|         |           | 6-leads 50 Hz 2-poles 400V-440V D P2=90kW                |             |
|         |           | 12-leads 60 Hz 2-poles 230V D// P2=104kW/140hp           |             |
|         |           | 6-leads 50 Hz 2-poles 500V-550V D P2=90kW                |             |
|         |           | 6-leads 60 Hz 2-poles 575V-600V D P2=104kW/140hp         |             |
| 133     | 50 221 06 | End sleeve 16 MM2; L=12 MM                               | 6-9         |
|         |           | 6-leads 50 Hz 2-poles 550V D P2=90kW                     |             |
|         |           | 12-leads 50 Hz 2-poles 500V Y// 1000V YSER P2=90kW       |             |
| 134     | 51 438 00 | Plate SENSOR CONNECTED T1-T2                             | 2           |
| 135     | 51 243 00 | Diffuser coat. NBR                                       | 1           |
| 135     | 51 243 01 | Diffuser coat. NBR                                       | 1           |
|         |           | Drilled acc. to: EN 1092-2 tab. 11                       |             |
| 135     | 51 243 02 | Diffuser coat. NBR                                       | 1           |
|         |           | Drilled acc. to: ASME B 16.5-1996;tab.11                 |             |
| 135     | 51 243 03 | Diffuser coat. PU  | 1           |
| 135     | 51 243 04 | Diffuser coat. PU  | 1           |
|         |           | Drilled acc. to: EN 1092-2 tab. 11                       |             |
| 135     | 51 243 05 | Diffuser coat. PU  | 1           |
|         |           | Drilled acc. to: ASME B 16.5-1996;tab.11                 |             |
| 136     | 50 174 04 | Adjusting washer 0.5 MM                                  | 4-5         |
|         |           | N Diffusor material: NBR                                 |             |
|         |           | H Diffusor material: NBR                                 |             |
|         |           | N Diffusor material: Polyurethane rubber (PU)            |             |
|         |           | H Diffusor material: Polyurethane rubber (PU)            |             |

| Pos. No | Part. No  | Denomination                               | Qty/Version   |   |
|---------|-----------|--|---|---|
|         |           |  | 400   |   |
| 136     | 50 174 04 | Adjusting washer 0.5 MM                    | N Diffusor material: NBR<br>N Diffusor material:<br>Polyurethane rubber (PU)                          | 2 |
| 136     | 50 174 03 | Washer 0.3 MM                              | H Diffusor material: NBR<br>H Diffusor material:<br>Polyurethane rubber (PU)                          | 3 |
| 137     | 50 174 03 | Washer 0.3 MM                              | H   | 2 |
| 137     | 50 174 04 | Adjusting washer 0.5 MM                    | H   | 2 |
| 138     | 51 220 00 | Diffuser coat. NBR                         |   | 1 |
| 138     | 51 220 01 | Diffuser coat. PU                          |   | 1 |
| 139     | 51 738 00 | Diffuser coat. NBR                         |   | 1 |
| 139     | 51 738 01 | Diffuser coat. PU                          |   | 1 |
| 140     | 51 246 00 | Diffuser disc coated NBR                   |   | 1 |
| 140     | 51 246 01 | Diffuser disc coated PU                    |   | 1 |
| 141     | 51 247 00 | Diffuser disc coated NBR                   |   | 1 |
| 141     | 51 247 01 | Diffuser disc coated PU                    |   | 1 |
| 142     | 51 242 05 | Wear ring NBR                              |   | 1 |
| 142     | 51 242 06 | Wear ring PU                               |   | 1 |
| 143     | 51 221 00 | Wear ring NBR                              |   | 1 |
| 143     | 51 221 01 | Wear ring PU                               |   | 1 |
| 144     | -         | Cap 10X20 PVC                              |   | 1 |
| 144     | 410 875   | Cap 6X16 PVC                               |   | 1 |
| 144     | -         | Cap 10X20 PVC                              |   | 2 |
| 144     | 410 876   | Cap 7X16 PVC                               |   | 1 |
| 146     | -         | Cap  |   | 1 |
| 146     | -         | Cap 32X45 PVC                              |   | 2 |
| 147     | 410 943   | Cable lug                                  |   | 1 |
| 148     | 51 213 00 | Plain washer                               |   | 1 |
| 149     | 51 214 04 | Stator housing                             |   | 1 |
| 149     | 51 214 05 | Stator housing PREPARED<br>FOR ZINC ANODES |   | 1 |
| 151     | 51 215 00 | Cover                                      |   | 1 |
| 152     | 51 216 00 | Bearing housing low.                       |   | 1 |
| 153     | 51 273 00 | Oil housing                                |   | 1 |
| 154     | 51 217 00 | Bearing cover                              |   | 1 |
| 155     | 51 218 01 | Diffuser coat. PU                          |   | 1 |
| 155     | 51 218 00 | Diffuser coat. NBR                         |   | 1 |
| 156     | 51 230 00 | Sleeve                                     | Hydraulic end material: Full<br>stainless steel<br>Hydraulic end material:<br>Partial stainless steel | 1 |

| Pos. No | Part. No  | Denomination   | Qty/Version |
|---------|-----------|--|-------------|
|         |           |  | 400         |
| 156     | 51 260 00 | Sleeve compl. Hydraulic end material:<br>Grey cast iron            | 1           |
| 157     | 51 117 03 | Zinc anode kit H   | 1           |
| 157,1   | 50 020 00 | Hex.socket hd screw<br>M6X20-A2-70                                 | 20          |
| 157,2   | 410 009   | Hex.socket hd screw<br>M6X30-A2-70                                 | 6           |
| 157,3   | 50 020 07 | Lock nut M6-A4-70  | 6           |
| 157,4   | 50 020 06 | Plain washer<br>9021-6,4X18X1,6                                    | 12          |
| 157,5   | 410 925   | Anode  | 16          |
| 157     | 51 117 02 | Zinc anode kit N   | 1           |
| 157,1   | 50 020 00 | Hex.socket hd screw<br>M6X20-A2-70                                 | 12          |
| 157,2   | 410 009   | Hex.socket hd screw<br>M6X30-A2-70                                 | 12          |
| 157,3   | 50 020 07 | Lock nut M6-A4-70  | 12          |
| 157,4   | 50 020 06 | Plain washer<br>9021-6,4X18X1,6                                    | 24          |
| 157,5   | 410 925   | Anode  | 18          |
| 158     | 51 274 01 | Strainer Hydraulic end material: Full<br>stainless steel           | 1           |
|         |           | Hydraulic end material:<br>Partial stainless steel                 |             |
| 158     | 51 274 00 | Strainer unit Hydraulic end material:<br>Grey cast iron            | 1           |
| 159     | 51 275 01 | Strainer Hydraulic end material: Full<br>stainless steel           | 1           |
|         |           | Hydraulic end material:<br>Partial stainless steel                 |             |
| 159     | 51 275 00 | Strainer unit Hydraulic end material:<br>Grey cast iron            | 1           |
| 160     | 51 211 01 | Strainer compl. SS Hydraulic end material: Full<br>stainless steel | 1           |
| 160     | 51 211 00 | Strainer compl. Hydraulic end material:<br>Grey cast iron          | 1           |
| 161     | 51 203 00 | Stud Hydraulic end material:<br>Grey cast iron                     | 3           |
| 161     | 410 269   | Stud 12X140-A4-70 Hydraulic end material: Full<br>stainless steel  | 3           |
| 162     | 50 898 00 | Marking tape   | 1           |
| 165     | 410 225   | Roller bearing   | 1           |
| 166     | 410 081   | Retaining ring SGA 40  | 1           |
| 167     | 130 995   | Retaining ring SGH 110   | 1           |
| 168     | 410 231   | Retaining ring SGH 115   | 1           |

| Pos. No | Part. No  | Denomination                       | Qty/Version |
|---------|-----------|------------------------------------|-------------|
|         |           |                                    | 400         |
| 169     | 410 239   | O-ring 134.3X5.7 NBR               | 1           |
| 170     | 51 253 00 | Washer                             | 1           |
| 171     | 51 254 00 | Bearing housing                    | 1           |
| 172     | 51 256 00 | Washer                             | 1           |
| 173     | 51 257 00 | Sleeve                             | 1           |
| 180     | 131 553   | Hexagon head screw<br>M12X25-A2-70 | 1           |
| 181     | 410 253   | Hexagon head screw<br>M16X35-A2-70 | 4           |
| 182     | 132 274   | Plain washer 12-A2-170             | 1           |
| 183     | 132 258   | Plain washer 16-A2-A-170           | 4           |
| 184     | 51 212 01 | Stand compl.                       | 1           |
| 192     | -         | Cap                                | 1           |
| 193     | 410 937   | Plug                               | 3           |
| 800     | 51 192 02 | O-ring kit                         | 1           |
| 800,37  | 133 064   | O-ring 19.2X3 NBR                  | 2           |
| 800,45  | 410 238   | O-ring 69.2X5.7 NBR                | 1           |
| 800,48  | 410 240   | O-ring 269.3X5.7 NBR               | 1           |
| 800,49  | 50 037 32 | O-ring 279.3X5.7 NBR               | 2           |
| 800,50  | 410 241   | O-ring 419.3X5.7 NBR               | 1           |
| 800,51  | 410 242   | O-ring 499.3X5.7 NBR               | 1           |
| 800,69  | 130 947   | O-ring 229.3X5.7 NBR               | 1           |
| 800,92  | 410 241   | O-ring 419.3X5.7 NBR               | 1           |
| 800,102 | 410 238   | O-ring 69.2X5.7 NBR                | 1           |
| 800,102 | 410 562   | O-ring 69.5X3 NBR                  | 2           |
| 800,129 | 133 064   | O-ring 19.2X3 NBR                  | 2           |
| 800,169 | 410 239   | O-ring 134.3X5.7 NBR               | 1           |
| 801     | 51 117 02 | Zinc anode kit N                   | 1           |
| 801     | 51 117 03 | Zinc anode kit H                   | 1           |
| 900     | 51 265 00 | Basic repair kit                   | 1           |
| 901     | 410 053   | Oil ISO VG 32                      | *           |
| 902     | -         | Grease                             | *           |
| 903     | -         | Grease                             | *           |
| 904     | -         | Grease                             | *           |



Grindex  
Gesällvägen 33  
174 87 Sundbyberg  
Sweden  
Tel: +46-8-606 66 00  
Fax: +46-8-745 53 28  
[www.grindex.com](http://www.grindex.com)

Visit our Web site for the latest version of this document  
and more information

The original instruction is in English. All non-English  
instructions are translations of the original instruction.

© 2014 Grindex