

3

MANUAL

EDILGRAPPA

ELECTRIC SHEAR

T32N

SPARE PARTS

INDEX

0 SPARE PARTS AND ACCESSORIES CATALOGUE	3
0.01 ORDERING INFORMATION	3
0.02 MECHANICAL AND ELECTRICAL COMPONENTS	3
COMPONENTS OF ELECTRIC SHEAR T32N P/N 1.50.1916	4

0 SPARE PARTS AND ACCESSORIES CATALOGUE



THE COMPANY DECLINES ALL LIABILITY FOR INJURY TO PEOPLE OR DAMAGE TO PROPERTY IF TECHNICAL ASSISTANCE IS NOT PERFORMED BY QUALIFIED AND AUTHORISED STAFF.



FOR TECHNICAL ASSISTANCE AND MAINTENANCE, CONTACT AN AUTHORISED SERVICE CENTRE OR WRITE TO cut@edilgrappa.com.

0.01 ORDERING INFORMATION

For technical assistance and spare parts, both during and after the period of warranty, quote the data indicated on the ID plates and the serial number punched on the tool body (fig. 1)



Fig. 1

Orders for spare parts must be accompanied by the following information:

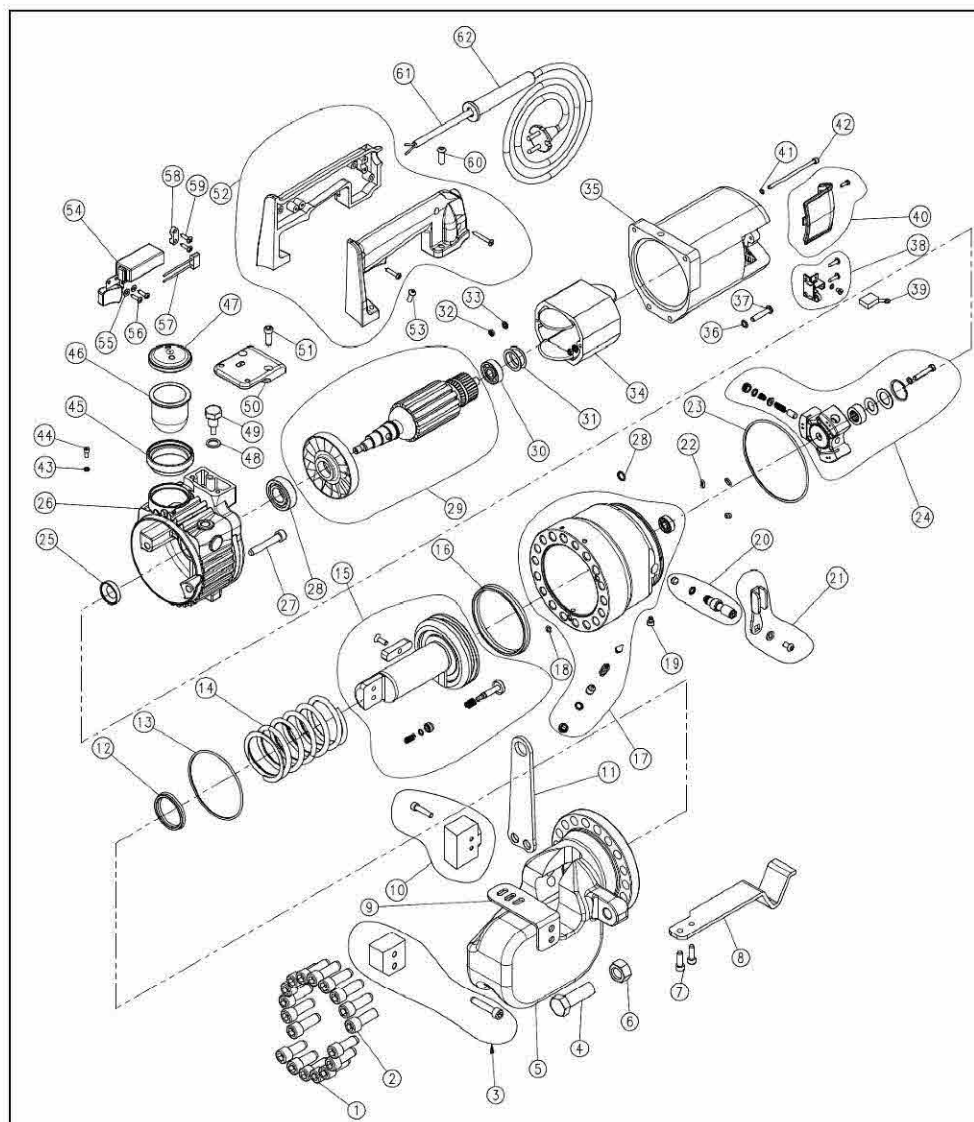
1. Type of equipment
2. Serial number
3. Part number and position in exploded drawing
4. Quantity
5. Revision status indicated on the back cover of the manual.

The Manufacturer can only supply the appropriate spare part if the required data is complete, since subsequent improvements may have entailed structural variations to the equipment and therefore to the spare parts.

0.02 MECHANICAL AND ELECTRICAL COMPONENTS

The following page contains an exploded diagram of the machine, complete with the part numbers, descriptions and quantities of each component.

PARTS OF ELECTRIC SHEAR T32N P/N 1.50.1916



PARTS OF ELECTRIC SHEAR T32N P/N 1.50.1916

Pos.	P/N	Item	Q.ty
1	1 60 179	SCREW	7
2	1 60 167	SCREW	11
3	1.50.1402	STATIONARY BLADE C/W SCREWS	1
4	1.60.191	SCREW	1
5	1.10.3618	HEAD	1
6	1 60 216	NUT	1
7	1 60 161	SCREW	2
8	1.10.3665	BRACKET	1
9	1.10.4604	STATIONARY BLADE GUARD	1
10	1.50.1403	MOVING BLADE C/W SCREWS	1
11	1.10.3666	LIFTING EYELET	1
12	1.30.510	SEAL	1
13	1.30.058	O-RING	1
14	1.10.3720	PISTON RETURN SPRING	1
15	1.50.1190	PISTON ASSEMBLY	1
16	1.30.1811	SEAL	1
17	1.50.1386	CYLINDER ASSEMBLY	1
18	1.30.102	O-RING	2
19	1.10.4340	SCREW	1
20	1.50.1923	MANUAL RETURN VALVE (VALVE ASS.Y)	1
21	1.50.1924	MANUAL RETURN VALVE (LEVER ASS.Y)	1
22	1.30.017	O-RING	3
23	1.30.1830	O-RING	1
24	1.50.1381	PUMP ASSEMBLY	1
25	1.60.014	PARAOLIO	1
26	1.10.4405	OIL RESERVOIR	1
27	1 60 174	SCREW	3
28	1.30.220	O-RING	3
29	200.005	ROTOR+FAN ASSEMBLY	1
30	1.60.003	BALL BEARING	1

Pos.	P/N	Item	Q.ty
31	1.60.324	COMPENSATION RING	2
32	1 60 207	NUT	2
33	1.60.382	LOCK WASHER	2
34	1.40.003	STATOR	1
35	1.30.002	MOTOR COVER	1
36	1.60.303	WASHER	4
37	1.60.938	SCREW	4
38	1.50.1935	BRUSH-HOLDER KIT	2
39	1.30.005	MOTOR BRUSH	1
40	1.50.1392	BRUSH COVER ASS.Y	2
41	1.10.811	WASHER	2
42	1.10.213	SCREW	2
43	1.60.3069	WASHER	1
44	1.60.3087	SCREW	1
45	1.10.4404	OVERSIZE MEMBRANE EXTENSION	1
46	1.30.537	OVERSIZE MEMBRANE	1
47	1.10.4407	MEMBRANE COVER	1
48	1.60.337	TANK CAP SEAL	1
49	1.50.227	MAGNETIC CAP	1
50	1.10.4408	HANDLE BRACKET	1
51	1.60.499	SCREW	2
52	1.50.1934	HANDLE ASSEMBLY CWV SCREWS	1
53	1.60.940	SCREW	2
54	1.40.001	POWER SWITCH	1
55	1 60 319	WASHER	2
56	1.60.128	SELF-THREADING SCREW	2
57	1.40.002	SURGE SUPPRESSION FILTER	1
58	1.30.020	POWER CORD STOPPER	1
59	1.60.129	SELF-THREADING SCREW	2
60	1.60.3036	SCREW	2
61	1.40.012	POWER CORD	1
62	1.30.021	CABLE GLAND	1

NOTES

EDILGRAPPA Srl

**MACHINES AND EQUIPMENT FOR THE BUILDING TRADE, INDUSTRY
AND RESCUE**

31030 BORSO DEL GRAPPA (TV) - ITALY - Via Callesello, 4
Tel. 0423 910122 – Fax 0423 542122

E-mail: cut@edilgrappa.com [http: //www.edilgrappa.com](http://www.edilgrappa.com)