

3

MANUAL

EDILGRAPPA

ELECTRIC SHEAR

T22N

SPARE PARTS

INDEX

0 SPARE PARTS AND ACCESSORIES CATALOGUE.....	4
0.01 ORDERING INFORMATION.....	4
0.02 MECHANICAL AND ELECTRICAL COMPONENTS.....	4
COMPONENTS OF ELECTRIC SHEAR T22N P/N 1.50.1265.....	5
COMPONENTS OF ELECTRIC SHEAR T22N P/N 150.01265 FROM SERIAL NUMBER 956.....	7
COMPONENTS OF ELECTRIC SHEAR T22N P/N 150.01265 FROM SERIAL NUMBER 956.....	8

0 SPARE PARTS AND ACCESSORIES CATALOGUE



THE COMPANY DECLINES ALL LIABILITY FOR INJURY TO PEOPLE OR DAMAGE TO PROPERTY IF TECHNICAL ASSISTANCE IS NOT PERFORMED BY QUALIFIED AND AUTHORISED STAFF.



FOR TECHNICAL ASSISTANCE AND MAINTENANCE, CONTACT AN AUTHORISED SERVICE CENTRE OR WRITE TO cut@edilgrappa.com.

0.01 ORDERING INFORMATION

For technical assistance and spare parts, both during and after the period of warranty, quote the data indicated on the ID plates and the serial number punched on the tool body (fig. 1)



Fig. 1

Orders for spare parts must be accompanied by the following information:

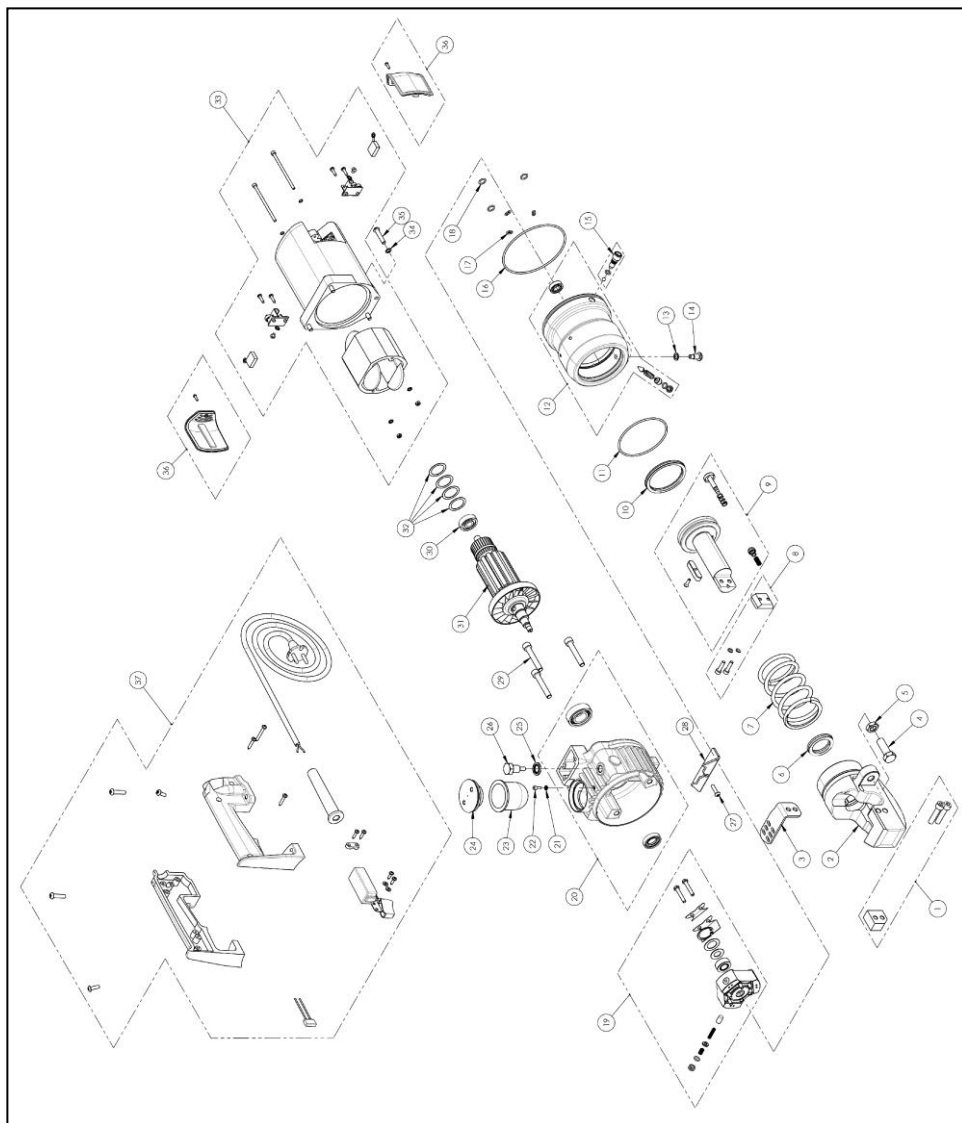
1. Type of equipment
2. Serial number
3. Part number and position in exploded drawing
4. Quantity
5. Revision status indicated on the back cover of the manual.

The Manufacturer can only supply the appropriate spare part if the required data is complete, since subsequent improvements may have entailed structural variations to the equipment and therefore to the spare parts.

0.02 MECHANICAL AND ELECTRICAL COMPONENTS

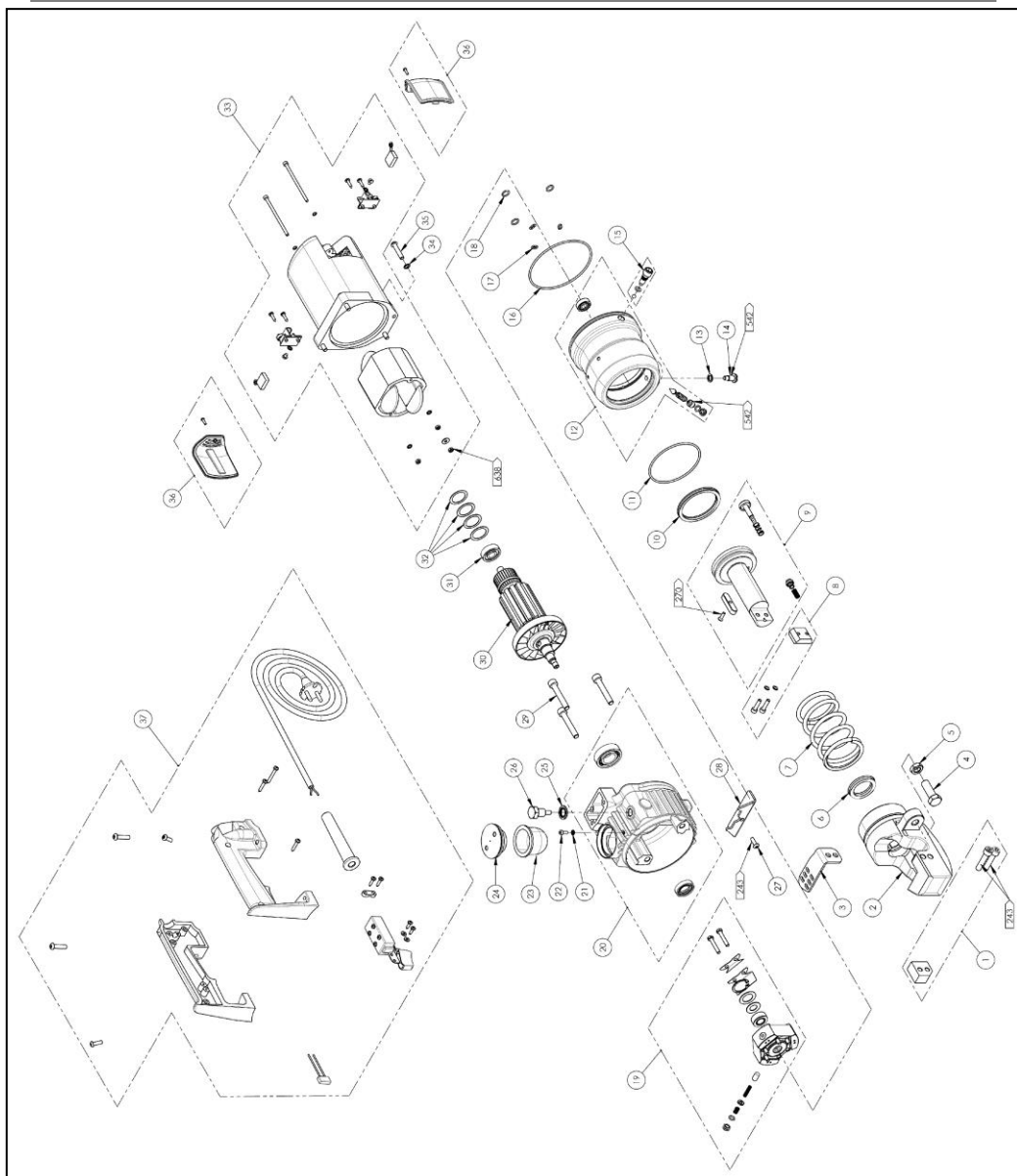
The following page contains an exploded diagram of the machine, complete with the part numbers, descriptions and quantities of each component.

COMPONENTS OF ELECTRIC SHEAR T22N P/N 1.50.1265



COMPONENTS OF ELECTRIC SHEAR T22N P/N 1.50.1265

Position	Part. N°	Description	Q.ty
1	150,01398	Fixed blade ass.y	1
2	110,03882	Head T22N	1
3	110,05604	Guard	1
4	160.00760	Bolt M12x35 UNI 5739 zinc plating	1
5	160,00202	Low nut M12 ES 6S UNI 5589 zinc plating	1
6	130,00006	M6 seal 4432(H6.5)	1
7	110,00091	Spring D.6xe67x5.5xL107 grounded	1
8	150,01399	Moving blade ass.y	1
9	150.02070	Piston ass.y	1
10	130,01831	M5 seal 7060(H5.5)	1
11	130,00505	O-ring 152 82.22x2.62	1
12	150,02071	Cylinder ass.y for T22N	1
13	170,00006	Copper flat washer 8X12x1.4	1
14	110,04073	Turned screw M8x18	1
15	150,01917	Manual relief valve for T22	1
16	130.01830	O-ring 156 107.62x2.62	1
17	130,00017	O-ring 010 6.07x1.78	3
18	130,00015	O-ring 9.25x1.78	3
19	150,00511	Pump ass.y	1
20	200,00078	Oil reservoir	1
21	160,03069	Bonded seal 4.10x7.20x1	1
22	160,03087	Socket cap screw M4x10	1
23	130,00537	Diaphragm	1
24	110,04144	Diaphragm housing lid	1
25	160,00337	Bonded washer 1/4"	1
26	150,00227	Magnetic filter	1
27	160,03068	Button screw M5x20 10.9 UNI 7380 Zn	1
28	110,06241	Stand-off bracket	1
29	160,00174	Socket cap screw M8x50	3
30	160,00003	Ball bearing 6200 30x10x9 ZZ C3	1
31	200,00005	Rotor + Fan 230V 50 Hz MU22	1
32	160,00324	Compensator ring 29,7x22,5x0,5	4
33	200,00006	Electrical motor 230V 50hz	1
34	160,00303	Schnorr washer M6 zinc plated	4
35	160,00938	Button screw M6x30 10.9 UNI 7380 Zn	4
36	150,01392	Brush cover ass.y	2
37	150.01910	Handle assembly	1

COMPONENTS OF ELECTRIC SHEAR T22N P/N 150.01265 FROM SERIAL NUMBER 956

COMPONENTS OF ELECTRIC SHEAR T22N P/N 150.01265 FROM SERIAL NUMBER 956

#	P/N	Description	Q.ty
1	150.01398	Fixed blade ass.y	1
2	110.03882	Head T22N	1
3	110.05604	Guard	1
4	160.00760	Bolt M12x35 UNI 5739 zinc plated	1
5	160.00202	Low nut M12 ES 6S UNI 5589 zinc plating	1
6	130.00006	M6 seal 4432(H6.5)	1
7	110.00091	Spring D.6xe67x5.5xL107 grounded	1
8	150.01399	Moving blade ass.y	1
9	150.02070	Piston ass.y	1
10	130.01831	M5 seal 7060(H5.5)	1
11	130.00505	O-ring 152 82.22x2.62	1
12	150.02071	Cylinder ass.y for T22N	1
13	170.00006	Copper washer 8X12x1.4	1
14	110.04073	Turned screw M8x18	1
15	150.01917	Manual relief valve for T22	1
16	130.01888	O-ring 155/3400 101.27x2.62	1
17	130.00017	O-ring 010 6.07x1.78	3
18	130.00015	O-ring 9.25x1.78	3
19	150.00511	Pump ass.y	1
20	200.00078	Oil reservoir	1
21	160.03069	Bonded seal 4.10x7.20x1	1
22	160.03087	Hex. socket cil. head screw M4x10 UNI 5931 zinc plated	1
23	130.01829	Diaphragm	1
24	110.04144	Diaphragm housing lid	1
25	160.00337	Bonded washer 1/4"	1
26	150.00227	Magnetic filter	1

#	P/N	Description	Q.ty
27	160.00940	Hex socket button head M5x16 10.9 UNI 7380 zinc plated	1
28	110.06241	Stand-off bracket	1
29	160.00174	Hex. socket cil. head screw M8x50 UNI 5931 zinc plated	3
30	160.00003	Ball bearing 6200 30x10x9 ZZ C3	1
31	200.00005	Rotor + Fan 230V 50 Hz MU22	1
32	160.00324	Compensator ring 29,7x22,5x0,5	4
33	200.00006	Electrical motor 230V 50hz	1
34	160.00303	Schnorr washer M6 zinc plated	4
35	160.00938	Hex socket button head M6x30 10.9 UNI 7380 zinc plated	4
36	150.01392	Brush cover ass.y	2
37	150.01910	Handle assembly	1

NOTES

TRANSLATION OF THE ORIGINAL INSTRUCTIONS FROM ITALIAN LANGUAGE
Revision 20200629 REPRODUCTION FORBIDDEN

EDILGRAPPA Srl

**MACHINES AND EQUIPMENT FOR THE BUILDING TRADE, INDUSTRY
AND RESCUE**

31030 BORSO DEL GRAPPA (TV) - ITALY - Via Callesello, 4
Tel. 0423 910122 – Fax 0423 542122

E-mail: cut@edilgrappa.com <http://www.edilgrappa.com>

