

3

MANUAL

EDILGRAPPA

**MACHINE BODY
WITH INTERCHANGEABLE HEADS
MU26N
SPARE PARTS**

INDEX

0 SPARE PARTS AND ACCESSORIES CATALOGUE	3
0.01 ORDERING INFORMATION	3
0.02 MECHANICAL AND ELECTRICAL COMPONENTS.....	3
COMPONENTS OF MACHINE BODY MU26N CODE 1.50.1891	4

0 SPARE PARTS AND ACCESSORIES CATALOGUE



THE COMPANY DECLINES ALL LIABILITY FOR INJURY TO PEOPLE OR DAMAGE TO PROPERTY IF TECHNICAL ASSISTANCE IS NOT PERFORMED BY QUALIFIED AND AUTHORISED STAFF.



FOR TECHNICAL ASSISTANCE AND MAINTENANCE, CONTACT AN AUTHORISED SERVICE CENTRE OR WRITE TO cut@edilgrappa.com.

0.01 ORDERING INFORMATION

For technical assistance and spare parts, both during and after the period of warranty, quote the data indicated on the ID plates and the serial number punched on the tool body (fig. 1)



Fig. 1

Orders for spare parts must be accompanied by the following information:

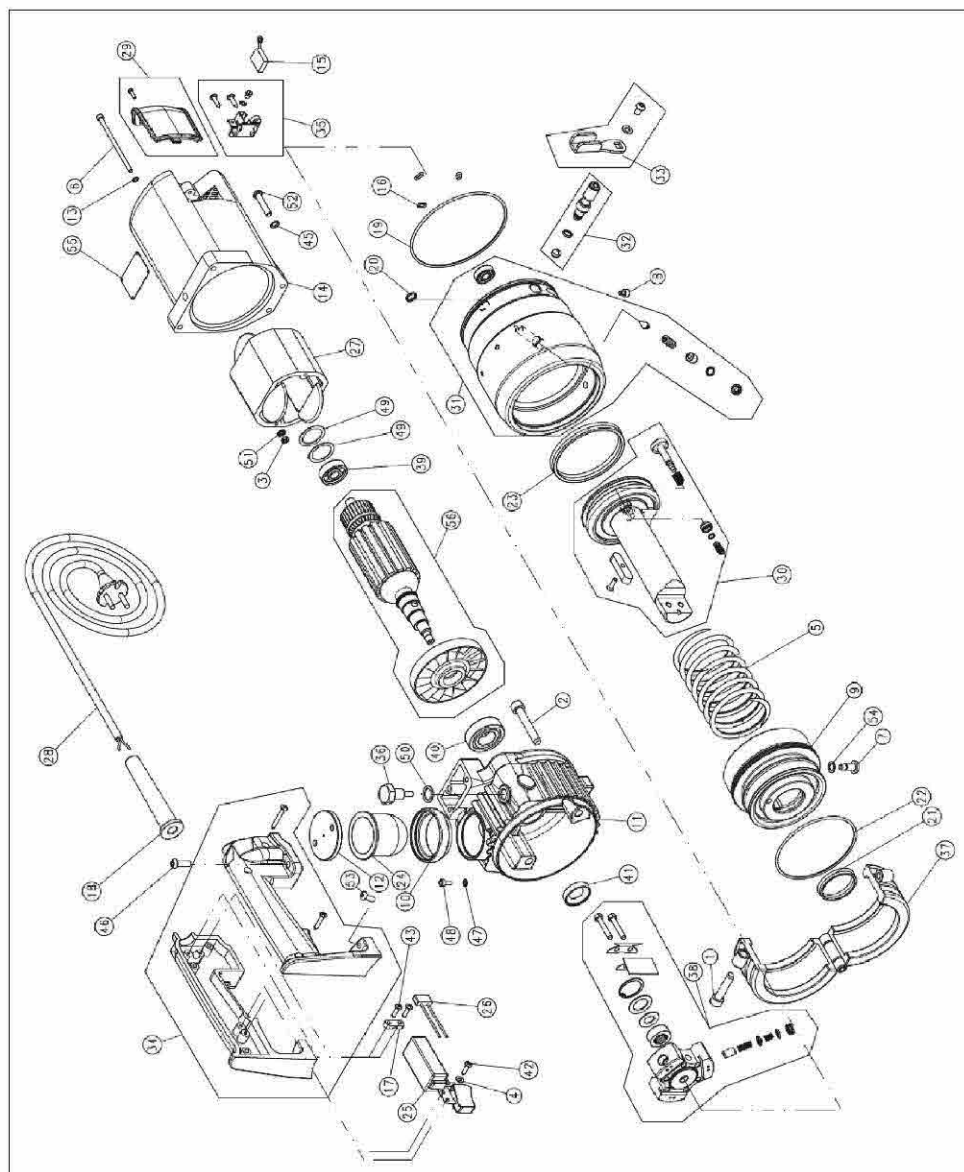
1. Type of equipment
2. Serial number
3. Part number or position in exploded drawing
4. Quantity
5. Revision status indicated on the back cover of the manual.

The Manufacturer can only supply the appropriate spare part if the required data is complete, since subsequent improvements may have entailed structural variations to the equipment and therefore to the spare parts.

0.02 MECHANICAL AND ELECTRICAL COMPONENTS

The following page contains an exploded diagram of the machine, complete with the part numbers, descriptions and quantities of each component

COMPONENTS OF MACHINE BODY MU26N CODE 1.50.1891



COMPONENTS OF MACHINE BODY MU26N CODE 1.50.1891

POS.	P/N	ITEM	Q.ty
1	1 60 101	SCREW	1
2	1 60 174	SCREW	3
3	1 60 207	NUT	2
4	1 60 319	WASHER	2
5	1.10.091	SPRING	1
6	1.10.213	SCREW	2
7	1.10.4073	FLANGE LOCKING SCREW	1
8	1.10.4340	SCREW	1
9	1.10.4360	FLANGE FOR INTERCHARGEABLE HEADS	1
10	1.10.4404	EXTENSION	1
11	1.10.4405	OIL TANK	1
12	1.10.4406	MEMBRANE COVER	1
13	1.10.811	WASHER	2
14	1.30.002	MOTOR COVER	1
15	1.30.005	BRUSH	2
16	1.30.017	O-RING	3
17	1.30.020	CABLE CLAMP	1
18	1.30.021	CABLE HOLDER	1
19	1.30.1830	O-RING	1
20	1.30.220	O-RING	3
21	1.30.367	GASKET	1
22	1.30.507	O-RING	1
23	1.30.536	GASKET	1
24	1.30.537	MEMBRANE	1
25	1.40.001	SWITCH	1
26	1.40.002	ANTI-DISTURBANCE FILTER	1
27	1.40.003	STATOR	1
28	1.40.012	CABLE WITH PLUG	1
29	1.50.1392	BRUSH COVER ASSEMBLY	2
30	1.50.1396	PISTON ASSEMBLY	1
31	1.50.1397	CYLINDER ASSEMBLY	1

POS.	P/N	ITEM	Q.ty
32	1.50.1923	MANUAL RETURN VALVE (VALVE ASSEMBLY)	1
33	1.50.1924	MANUAL RETURN VALVE (LEVER ASSEMBLY)	1
34	1.50.1934	HALF-SHELL AND SCREWS ASSEMBLY	1
35	1.50.1935	BRUSH HOLDER SET	2
36	1.50.227	MAGNETIC CAP	1
37	1.50.371	HEAD LOCKING RING	1
38	1.50.511	PUMP ASSEMBLY	1
39	1.60.003	BEARING	1
40	1.60.013	BEARING	1
41	1.60.014	OIL SEAL	1
42	1.60.128	SCREW	2
43	1.60.129	SCREW	2
45	1.60.303	WASHER	4
46	1.60.3036	SCREW	2
47	1.60.3069	BONDED SEAL	1
48	1.60.3087	SCREW	1
49	1.60.324	COMPENSATOR RING	2
50	1.60.337	BONDED SEAL	1
51	1.60.382	WASHER	2
52	1.60.938	SCREW	4
53	1.60.940	SCREW	2
54	1.70.006	COPPER WASHER	1
55	1.90.127	ADESIVE LABEL	1
56	200.005	ROTOR WITH FAN ASSEMBLY	1

NOTES

NOTES

EDILGRAPPA Srl

**MACHINES AND EQUIPMENT FOR THE BUILDING TRADE,
INDUSTRY AND RESCUE**

31030 BORSO DEL GRAPPA (TV) - ITALY - Via Callesello, 4
Tel. 0423 910122 – Telefax 0423 542122

E-mail: cut@edilgrappa.com <http://www.edilgrappa.com>