

3

MANUAL

EDILGRAPPA

**MACHINE BODY
WITH INTERCHANGEABLE HEADS
MU22N
SPARE PARTS**

INDEX

0 SPARE PARTS AND ACCESSORIES CATALOGUE 3
 0.01 ORDERING INFORMATION..... 3
 0.02 MECHANICAL AND ELECTRICAL COMPONENTS 3
 COMPONENTS OF MACHINE BODY MU22N CODE 1.50.1952 4

0 SPARE PARTS AND ACCESSORIES CATALOGUE



THE COMPANY DECLINES ALL LIABILITY FOR INJURY TO PEOPLE OR DAMAGE TO PROPERTY IF TECHNICAL ASSISTANCE IS NOT PERFORMED BY QUALIFIED AND AUTHORISED STAFF.



FOR TECHNICAL ASSISTANCE AND MAINTENANCE, CONTACT AN AUTHORISED SERVICE CENTRE OR WRITE TO cut@edilgrappa.com.

0.01 ORDERING INFORMATION

For technical assistance and spare parts, both during and after the period of warranty, quote the data indicated on the ID plates and the serial number punched on the tool body (fig. 1)



Fig. 1

Orders for spare parts must be accompanied by the following information:

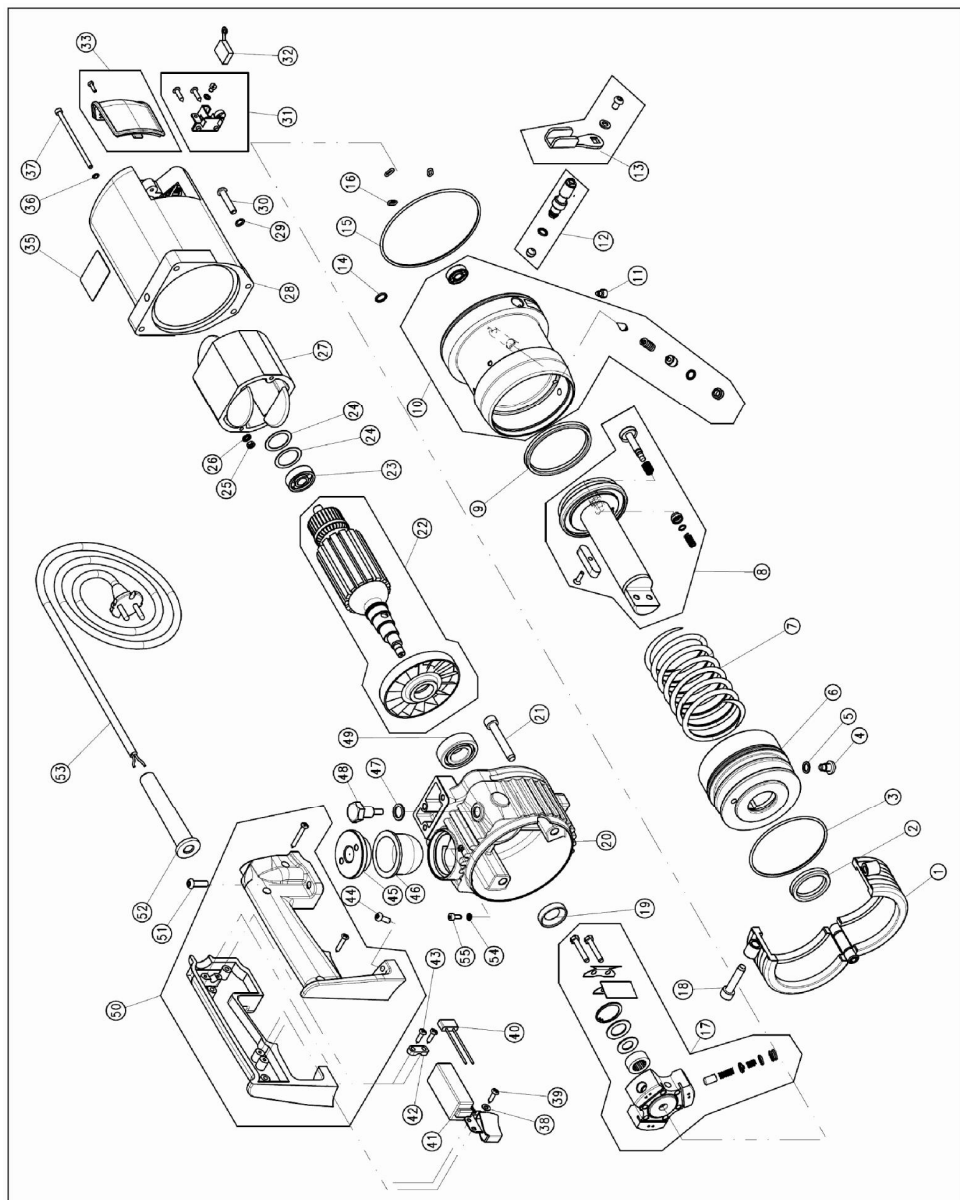
1. Type of equipment
2. Serial number
3. Part number or position in exploded drawing
4. Quantity
5. Revision status indicated on the back cover of the manual.

The Manufacturer can only supply the appropriate spare part if the required data is complete, since subsequent improvements may have entailed structural variations to the equipment and therefore to the spare parts.

0.02 MECHANICAL AND ELECTRICAL COMPONENTS

The following page contains an exploded diagram of the machine, complete with the part numbers, descriptions and quantities of each component

COMPONENTS OF MACHINE BODY MU22N CODE 1.50.1952



COMPONENTS OF MACHINE BODY MU22N CODE 1.50.1952

POS	P/N	ITEM	PCS
1	1.50.077	HEAD LOCKING RING ASSEMBLY	1
2	1.30.006	GASKET	1
3	1.30.505	O-RING	1
4	1.10.4461	FLANGE LOCKING SCREW	1
5	1.70.006	COPPER WASHER	1
6	1.10.3877	FLANGE FOR INTERCHANGEABLE HEADS	1
7	1.10.091	SPRING	1
8	1.50.1384	PISTON ASSEMBLY	1
9	1.30.003	GASKET	1
10	200.069	CYLINDER ASSEMBLY	1
11	1.10.4340	SCREW	1
12	1.50.1923	MANUAL RETURN VALVE (VALVE ASSEMBLY)	1
13	1.50.1924	MANUAL RETURN VALVE (LEVER ASSEMBLY)	1
14	1.30.220	O-RING	3
15	1.30.1830	O-RING	1
16	1.30.017	O-RING	3
17	1.50.511	PUMP ASSEMBLY	1
18	1 60 101	SCREW	1
19	1.60.014	OIL GUARD	1
20	1.10.4141	TANK	1
21	1 60 174	SCREW	3
22	200.005	ROTOR/FAN ASSEMBLY	1
23	1.60.003	BEARING	1
24	1.60.324	ADJUSTING RING	2
25	1 60 207	NUT	2
26	1.60.382	WASHER	2
27	1.40.003	STATOR	1

POS	P/N	ITEM	PCS
28	1.30.002	MOTOR COVER	1
29	1.60.303	WASHER	5
30	1.60.938	SCREW	5
31	1.50.1935	BRUSH HOLDER KIT	2
32	1.30.005	MOTOR BRUSH	2
33	1.50.1392	BRUSH COVER ASSEMBLY	2
35	1.90.127	ADHESIVE LABEL	1
36	1.10.811	WASHER	2
37	1.10.213	SCREW	2
38	1 60 319	WASHER	2
39	1.60.128	SELF-TAPPING SCREW	2
40	1.40.002	ANTI-DISTURBANCE FILTER	1
41	1.40.001	SWITCH	1
42	1.30.020	PLASTIC CABLE CLAMP	1
43	1.60.129	SELF-TAPPING SCREW	2
44	1.60.940	SCREW	2
45	1.10.4144	MEMBRANE COVER	1
46	1.30.1829	MEMBRANE	1
47	1.60.337	GASKET FOR MAGNETIC CAP	1
48	1.50.227	CAP WITH MAGNETIC FILTER	1
49	1.60.013	BEARING	1
50	1.50.1934	HALF-SHELL AND SCREWS ASSEMBLY	1
51	1.60.3036	SCREW	2
52	1.30.021	CABLE HOLDER	1
53	1.40.012	CABLE WITH PLUG	1
54	1.60.3069	BONDED WASHER	1
55	1.60.3087	SCREW	1

NOTES

NOTES

EDILGRAPPA Srl
MACHINES AND EQUIPMENT FOR THE BUILDING TRADE,
INDUSTRY AND RESCUE

31030 BORSO DEL GRAPPA (TV) - ITALY - Via Callesello, 4
Tel. 0423 910122 – Telefax 0423 542122

E-mail: cut@edilgrappa.com <http://www.edilgrappa.com>