

VAR 8-305 D ITH



Spare Parts List

Self Priming Centrifugal Pump

VAR 8-305 D ITH s/n ITH0000001 -

Engine: KDI 1903 TCR / D2011L04



General information

This spare parts list applies to the following:

Part number	Description
8381061326	VAR 8-305 D - KDI 1903 TCR
8381061327	VAR 8-305 D - D2011L04
8381061328	VAR 8-305 D - KDI 1903 TCR
8381061329	VAR 8-305 D - D2011L04

Use only authorized parts. Any damage or malfunction caused by the use of unauthorized parts is not covered by Warranty or Product Liability. Any unauthorized use or copying of the contents or any part thereof is prohibited. This applies in particular to trademarks, model denominations, part numbers, and drawings.

Instructions for use

This spare parts list contains no safety regulations and is merely intended to assist in the ordering of spare parts.

For information about operating, servicing, or repairing, the relevant Safety and operating instructions must be consulted at all costs.

Please observe the safety instructions listed in the relevant Safety and operating instructions!

Kits and consumables - 8381061326 and 8381061328 - KDI 1903 TCR	1
Kits and consumables - 8381061327 and 8381061329 - D2011L04	3

Service

4810064379_00 Service Pak 500 Hr - 8381061326 and 8381061328 - KDI 1903 TCR	5
4810064380_00 Service Pak 1000 Hr - 8381061326 and 8381061328 - KDI 1903 TCR	7
4810066012_00 Service Pak 500 Hr - 8381061327 and 8381061329 - D2011L04	9
4810066013_00 Service Pak 1000 Hr - 8381061327 and 8381061329 - D2011L04	11
4810064368_00 Seal kit	13
4810066051_00 Wear part kit	15
4810054358_00 Coupling repair kit	17

Engine

Engine Spare Parts - KDI 1903 TCR	19
Engine Spare Parts - D2011L04	21

Mechanical

4810043676_00 Set of screws	23
4810043677_00 Set of gaskets	25
4810043675_00 Set of cover	27
4810009543_00 Pump core	29
4810023418_00 Extension	31
4810020623_00 Mechanical seal assembly	33
4810009028_00 Check valve assembly	35
4810007595_00 Complete shaft assembly	37
4810008168_00 Coupling assembly	39
4810014263_00 Suction flange set	41
4810060167_00 Frame arrangement - KDI 1903 TCR	43
4810063230_00 Frame arrangement - D2011L04	45
4810059181_00 Complete battery assembly	47
4810062881_00 Lifting bar assembly	49
4810056618_00 Fuel indicator assembly	51
4810057953_00 Complete engine assembly - D2011L04	53

Options / accessories

4810061906_00 Trailer assembly - D2011L04	55
4810055266_00 Foot assembly - D2011L04	57
8381060033_00 Kit mudguards - D2011L04	59
4810058943_00 Mudguard assembly - D2011L04	61
4810061154_00 Control panel - KDI 1903 TCR	63
4810049113_00 Control panel - D2011L04	65
4810066428_00 Fleetlink locator retrofit kit	67

Kits and consumables - 8381061326 and 8381061328 - KDI 1903 TCR

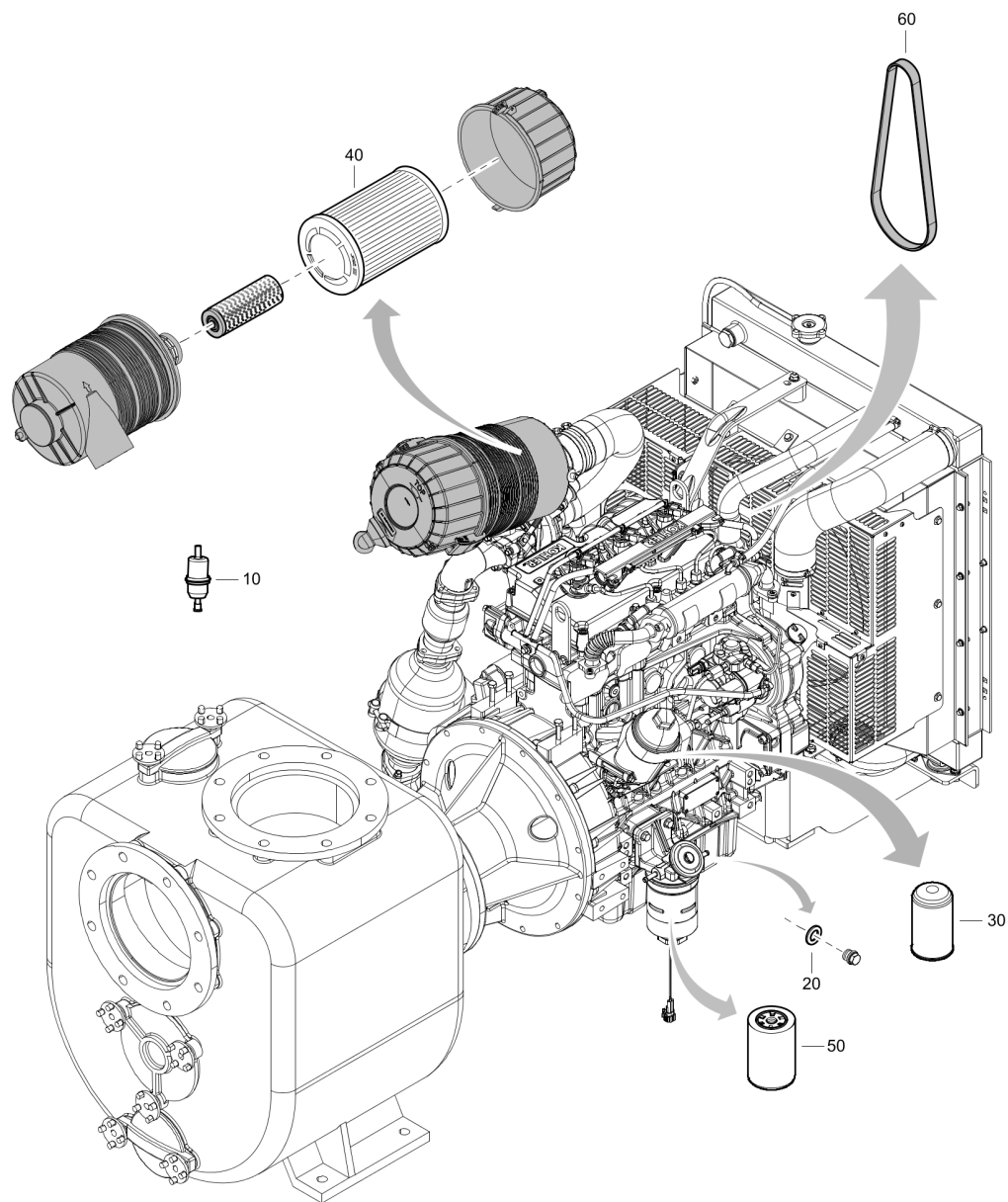
VAR 8-305 D - KDI 1903 TCR			Change interval/quantity		
Kits/consumables	Item number	Description	500 Hr	1000 Hr	When needed
Maintenance kit	1	Service Pak 500 Hr	1		
	2	Service Pak 1000 Hr		1	
Engine oil Change every 500 Hr or 12 months	3	Can Paroil Mission green 5 Liter/1.32 Gallon			
	4	Can Paroil Mission green 20 Liter/5.3 Gallon	8.9 Liter 2.35 Gallon	8.9 Liter 2.35 Gallon	8.9 Liter 2.35 Gallon
	5	Drum Paroil Mission green 210 Liter/55.5 Gallon			
Engine coolant	6	Can Parcool Green 5 Liter/1.32 Gallon			
	7	Can Parcool Green 20 Liter/5.3 Gallon			9 Liter 2.37 Gallon
	8	Can Parcool Green 210 Liter/55.5 Gallon			
Mechanical seal grease	9	Parlube (0.4 Kg)			1
Service and repair kit	10	Seal kit			1
	11	Wear part kit			1
	12	Coupling repair kit			1

Item	Part No.	Name	Qty	L
1	4810064379	Service pak 500 Hr	1	
2	4810064380	Service pak 1000 Hr	1	
3	1630047100	Can Paroil E Mission green 5 Liter/1.32 Gallon	1	
4	1630047200	Can Paroil E Mission Green 20 Liter/5.3 Gallon	1	
5	1630047300	Barrel Paroil E Mission Green 210 Liter/55.5 Gallon	1	
6	1630013401	Can Parcool Green 5 Liter/1.32 Gallon	1	
7	1630013406	Can Parcool Green 20 Liter/5.3 Gallon	1	
8	1630013407	Can Parcool Green 210 Liter/55.5 Gallon	1	
9	4812030095	Parlube (0,4 KGS)	1	
10	4810064368	Seal kit	1	
11	4810066051	Wear part kit	1	
12	4810054358	Coupling repair kit	1	

Kits and consumables - 8381061327 and 8381061329 - D2011L04

VAR 8-305 D - D2011L04			Change interval/quantity		
Kits/consumables	Item number	Description	500 Hr	1000 Hr	When needed
Maintenance kit	1	Service Pak 500 Hr	1		
	2	Service Pak 1000 Hr		1	
Engine oil Change every 500 Hr or 12 months	3	Can Paroil E 5 Liter/1.32 Gallon			
	4	Can Paroil E 20 Liter/5.3 Gallon	11.8 Liter	11.8 Liter	11.8 Liter
	5	Can Paroil E 210 Liter/55.5 Gallon	3.11 Gallon	3.11 Gallon	3.11 Gallon
Mechanical seal grease	6	Parlube (0.4 Kg)			1
Service and repair kit	7	Seal kit			1
	8	Wear part kit			1
	9	Coupling repair kit			1

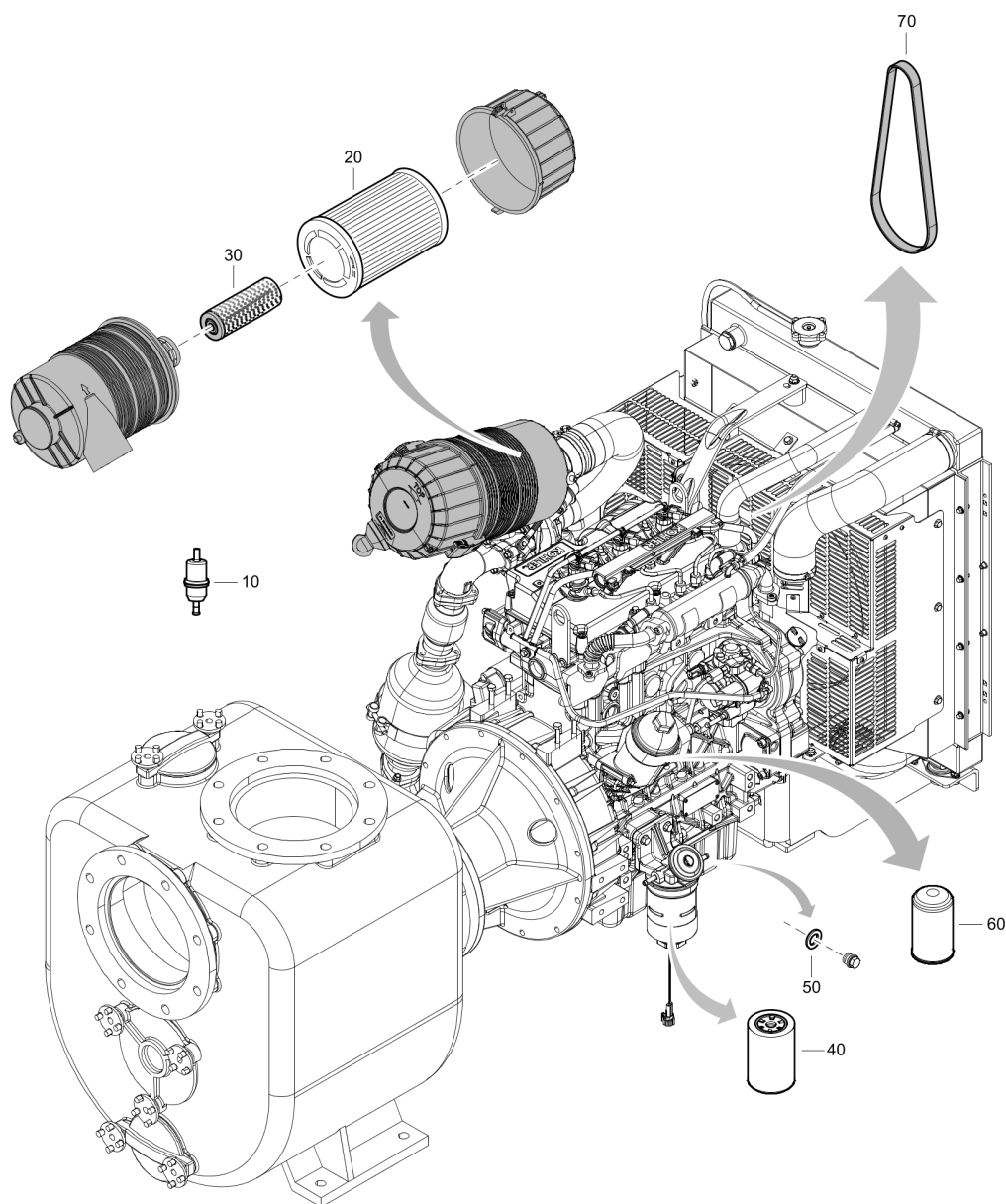
Item	Part No.	Name	Qty	L
1	4810066012	Service Pak 500 Hr	1	
2	4810066013	Service Pak 1000 Hr	1	
3	1615595300	Can Paroil E 5 Liter/1.32 Gallon	1	
4	1615595400	Can Paroil E 20 Liter/5.3 Gallon	1	
5	1615595500	Barrel Paroil E 210 Liter/55.5 Gallon	1	
6	4812030095	Parlube (0,4 KGS)	1	
7	4810064368	Seal kit	1	
8	4810066051	Wear part kit	1	
9	4810054358	Coupling repair kit	1	

Service 4810064379_00 Service Pak 500 Hr - 8381061326 and 8381061328 - KDI 1903 TCR

Refer to Parts Online for the most up to date information. The printed information might be outdated.

Tue May 12 11:30:20 UTC 2020

Item	Part No.	Name	Qty	L
-	4810064379	Service pak 500 Hr	1	
10	-	Fuel pre-filter	1	
20	-	Oil plug gasket	1	
30	-	Oil filter cartridge	1	
40	-	Belt	1	
50	-	Fuel filter element	1	
60	-	Belt	1	

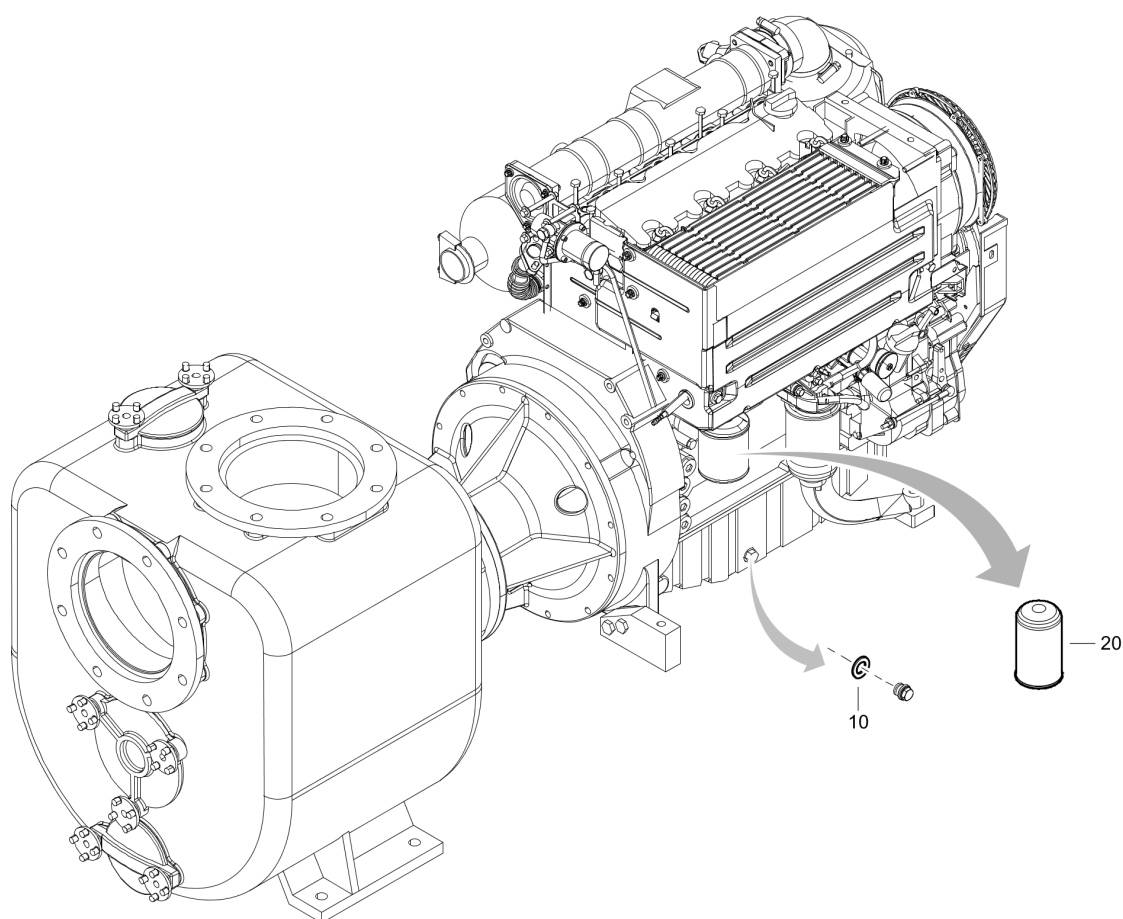
Service 4810064380_00 Service Pak 1000 Hr - 8381061326 and 8381061328 - KDI 1903 TCR

Refer to Parts Online for the most up to date information. The printed information might be outdated.

Tue May 12 11:30:20 UTC 2020

Item	Part No.	Name	Qty	L
-	4810064380	Service pak 1000 Hr	1	
10	-	Fuel pre filter	1	
20	-	Air filter cartridge	1	
30	-	Air filter safety cartridge	1	
40	-	Fuel filter element	1	
50	-	Gasket oil plug	1	
60	-	Oil filter cartridge	1	
70	-	Belt	1	

Service 4810066012_00 Service Pak 500 Hr - 8381061327 and 8381061329 - D2011L04

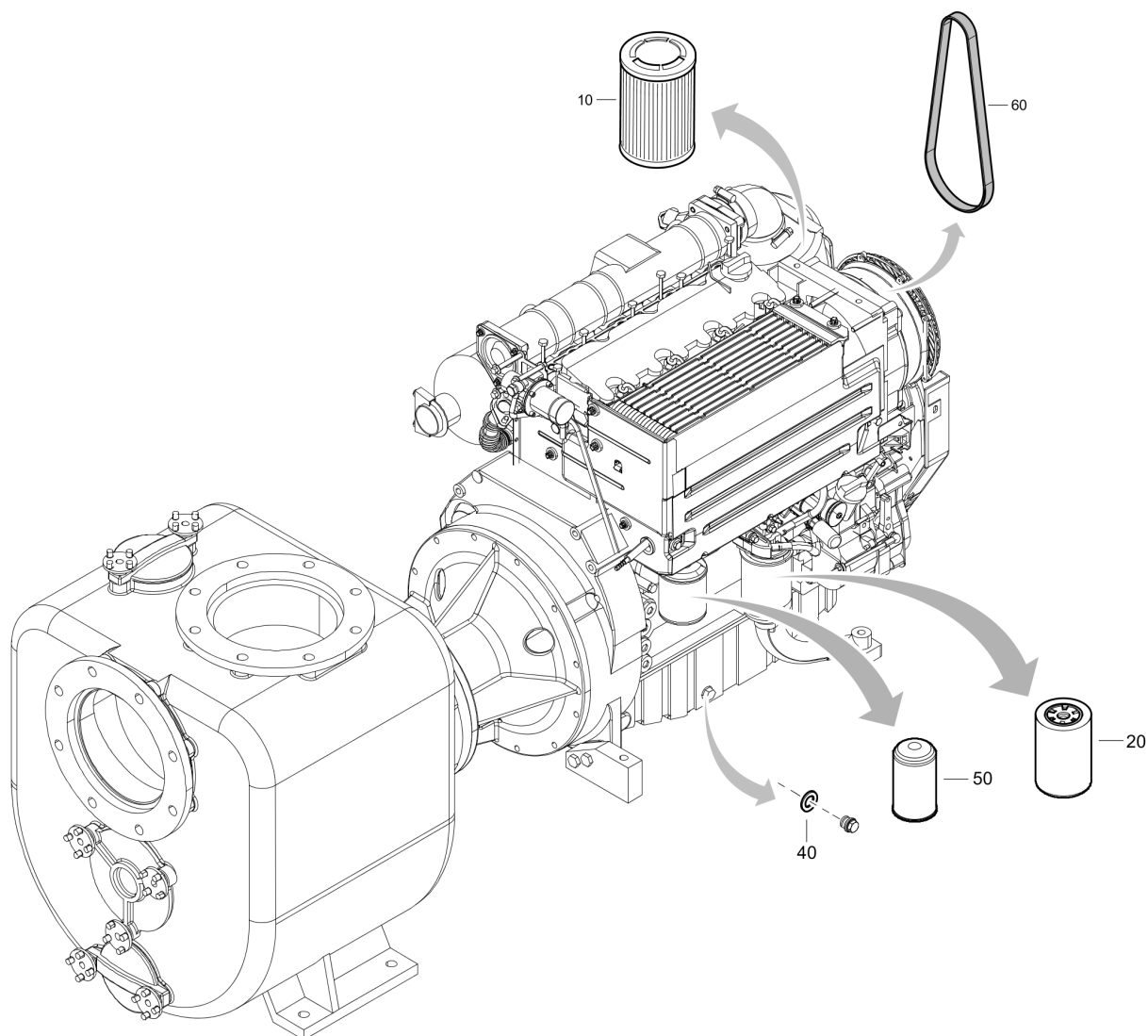


Refer to Parts Online for the most up to date information. The printed information might be outdated.

Tue May 12 11:30:21 UTC 2020

Item	Part No.	Name	Qty	L
-	4810066012	Service Pak 500 Hr	1	
10	-	Sealing ring	1	
20	-	Oil filter cartridge	1	

Service 4810066013_00 Service Pak 1000 Hr - 8381061327 and 8381061329 - D2011L04

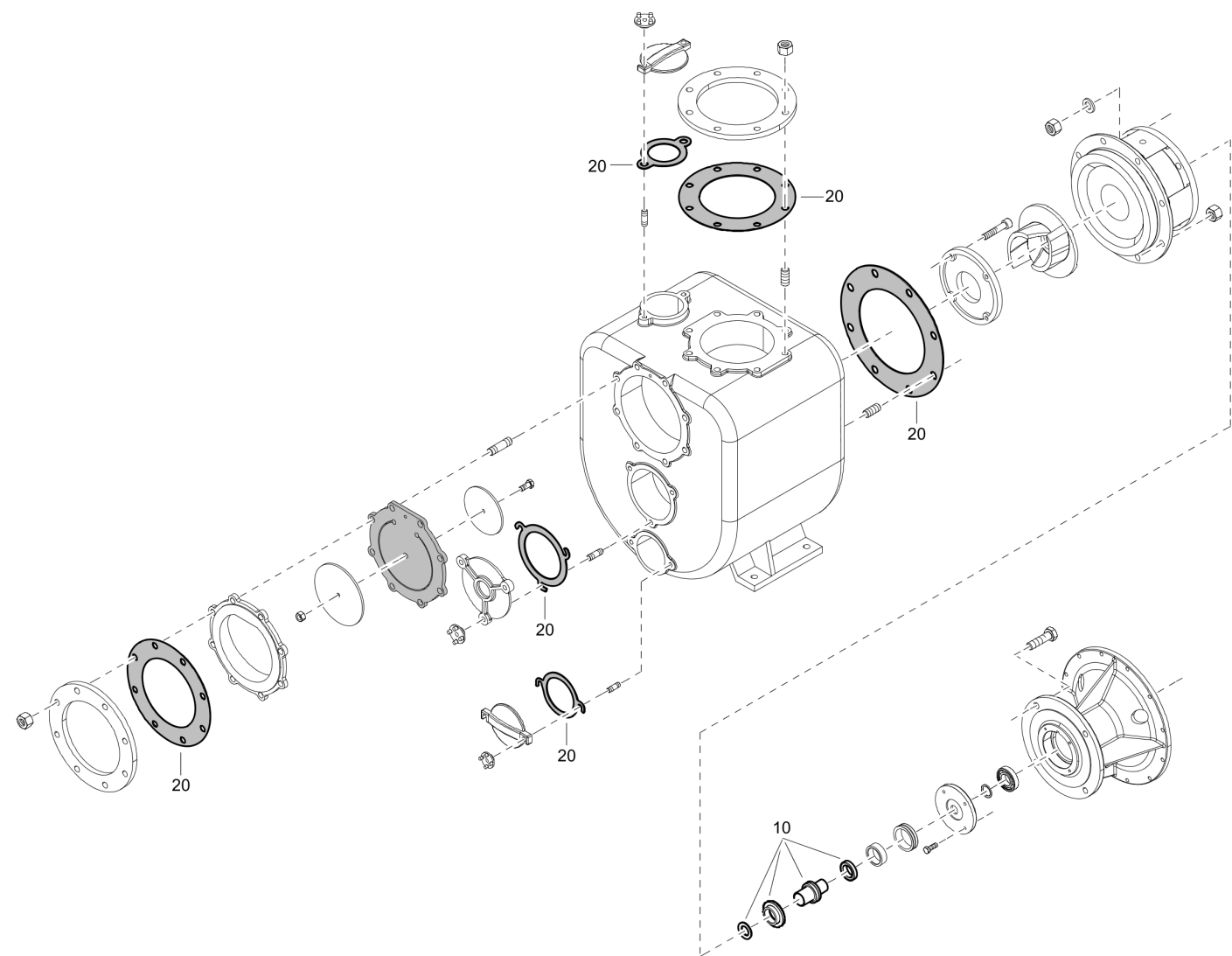


Refer to Parts Online for the most up to date information. The printed information might be outdated.

Tue May 12 11:30:21 UTC 2020

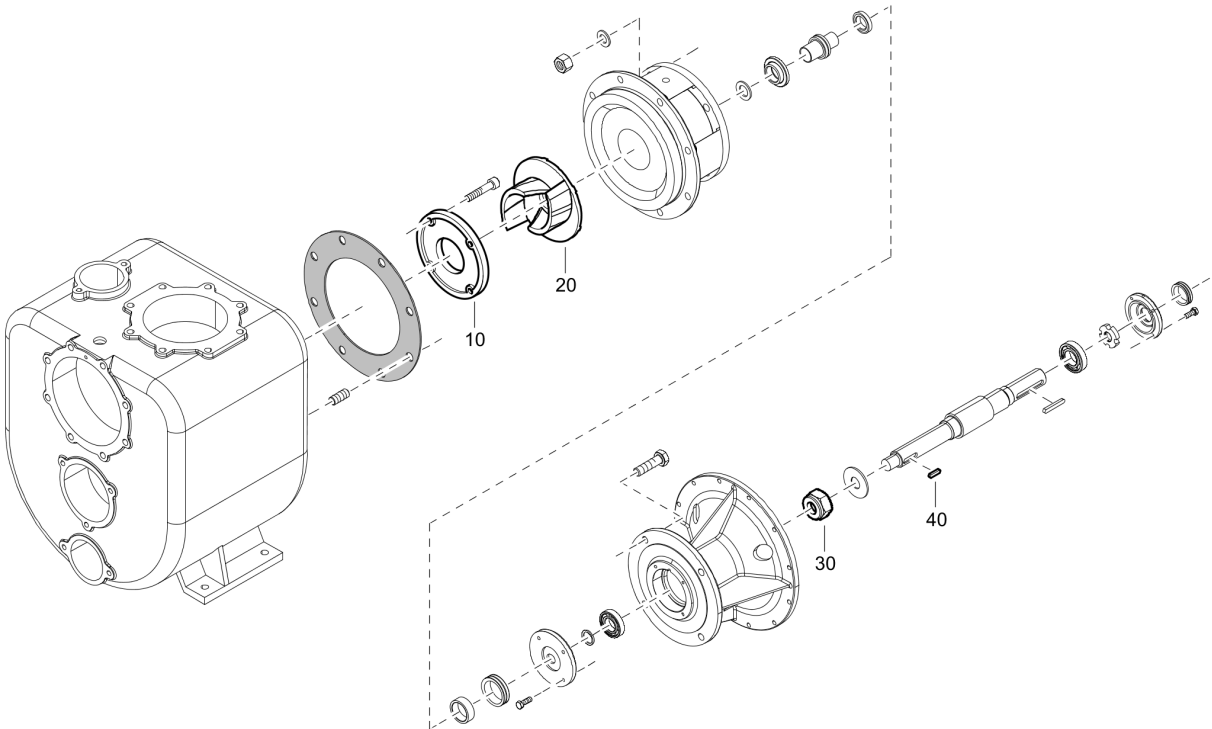
Item	Part No.	Name	Qty	L
-	4810066013	Service Pak 1000 Hr	1	
10	-	Air filter cartridge	1	
20	-	Fuel filter element	1	
40	-	Sealing ring	1	
50	-	Oil filter cartridge	1	
60	-	Belt	1	

Service 4810064368_00 Seal kit



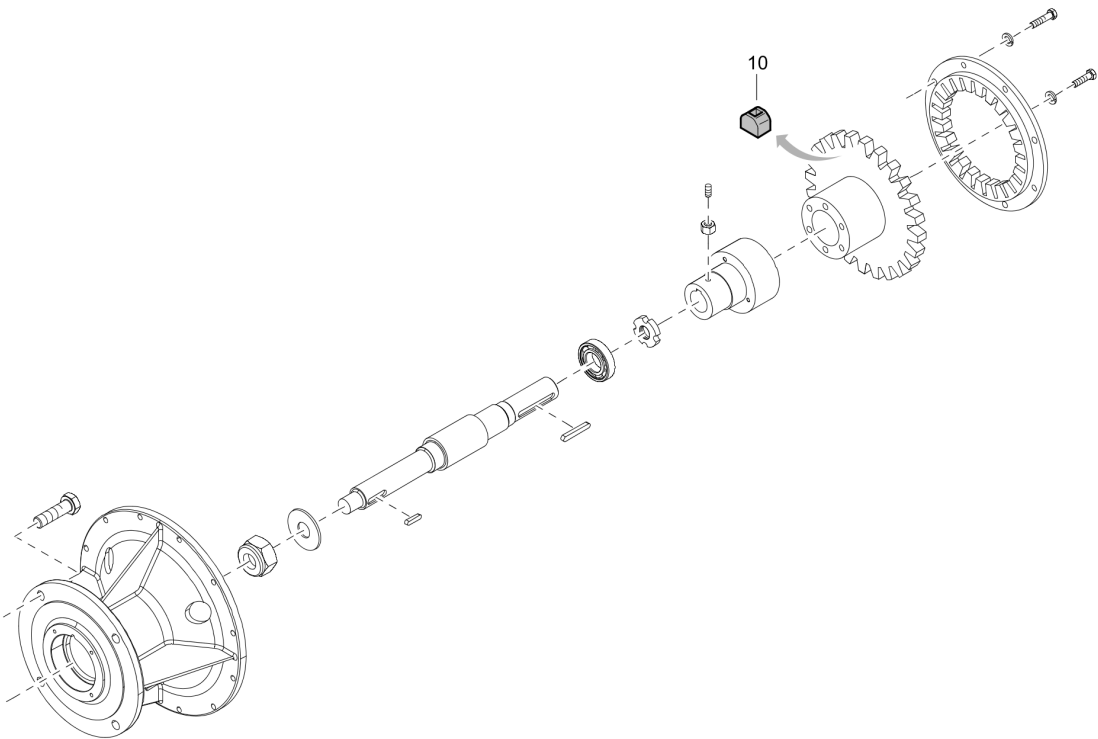
Item	Part No.	Name	Qty	L
-	4810064368	Seal kit	1	
10	4810020623	Mechanical seal assembly	1	
20	4810043677	Set of gaskets	1	

Service 4810066051_00 Wear part kit

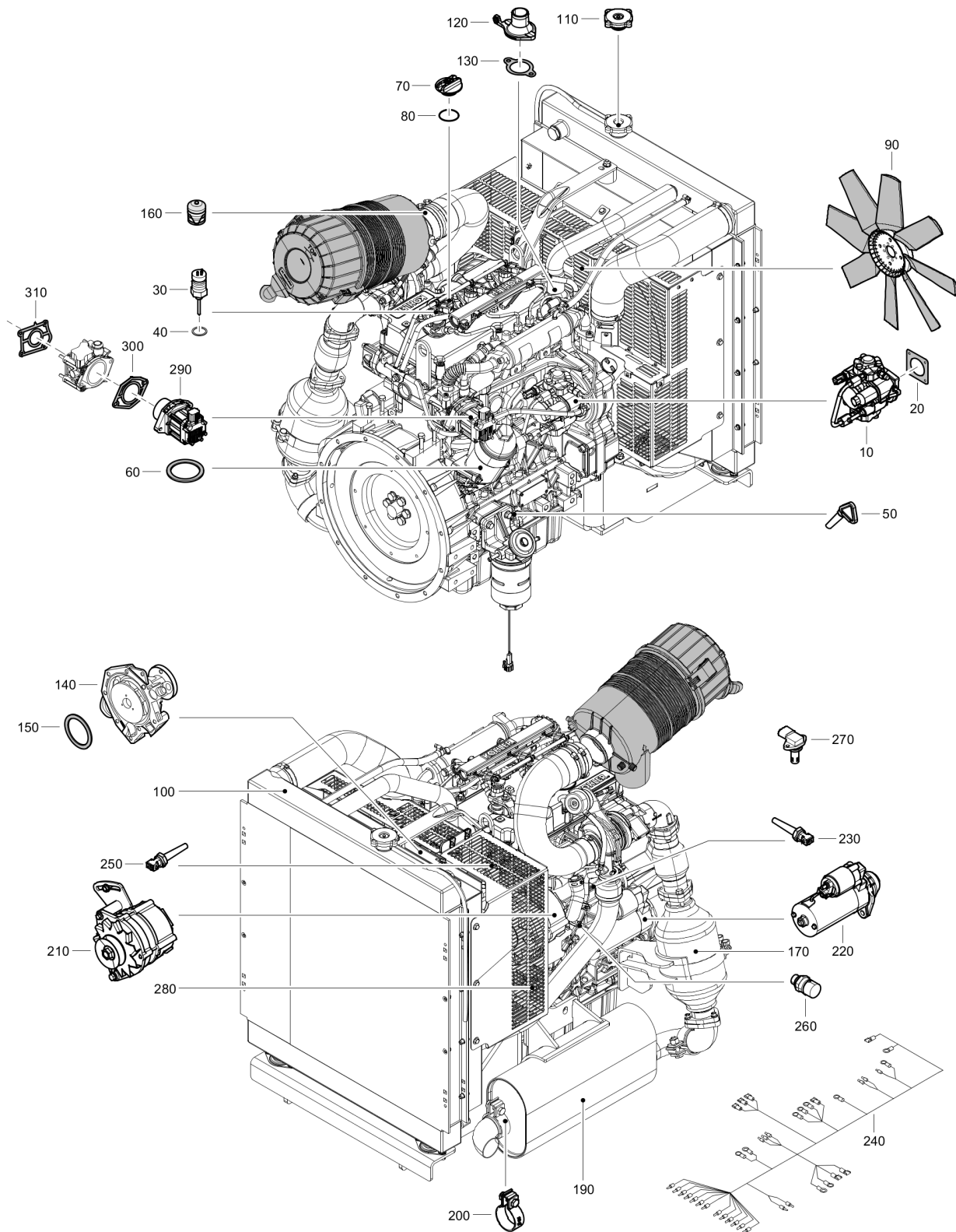


Item	Part No.	Name	Qty	L
-	4810066051	Wear part kit	1	
10	4810008454	Wear plate set	1	
20	4810005362	Impeller	1	
30	4810001466	Nut	1	
40	4810001636	Key	1	

Service 4810054358_00 Coupling repair kit



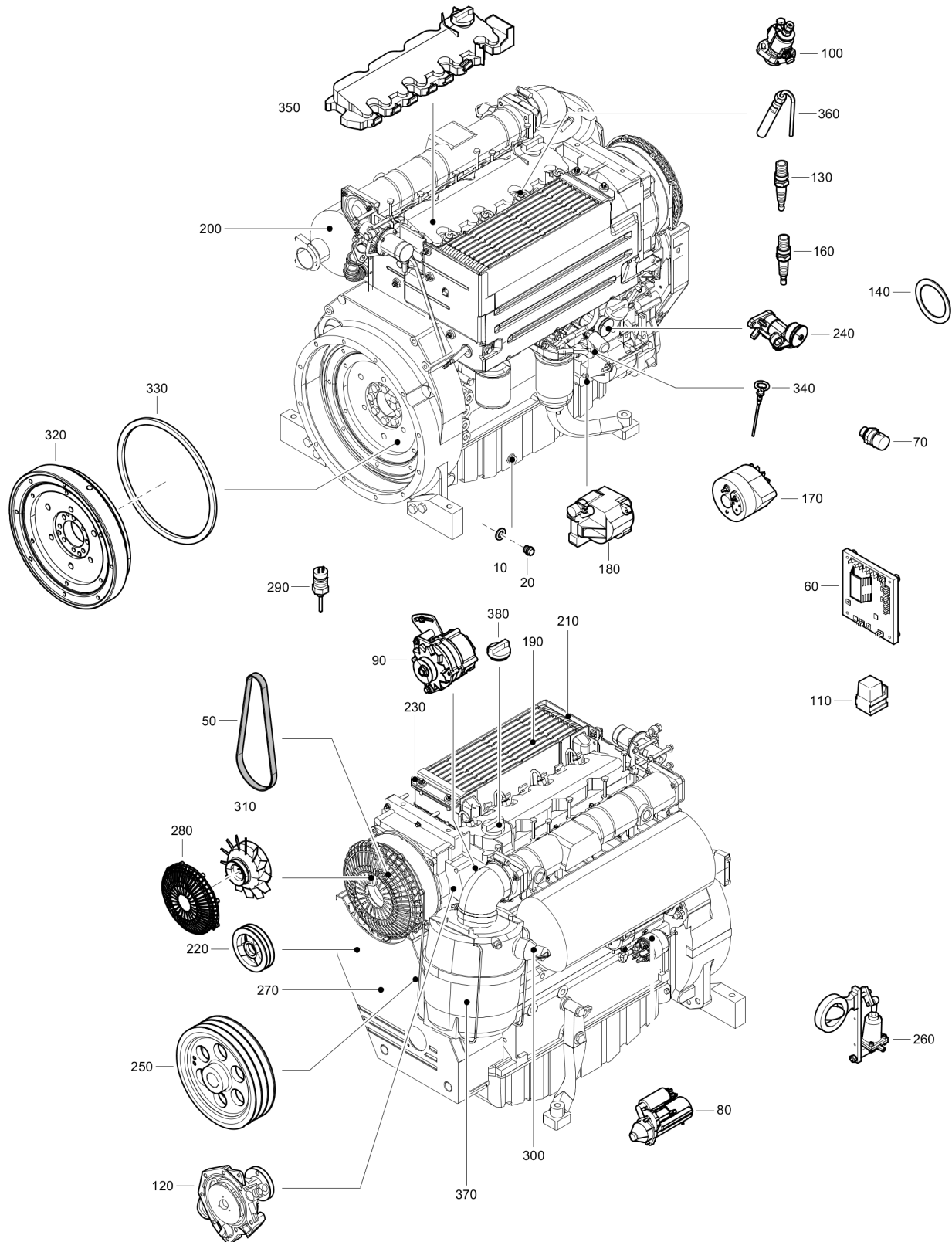
Item	Part No.	Name	Qty	L
10	4810054358	Coupling repair kit	1	

Engine Engine Spare Parts - KDI 1903 TCR

Refer to Parts Online for the most up to date information. The printed information might be outdated.

Tue May 12 11:30:24 UTC 2020

Item	Part No.	Name	Qty	L
10	4810060642	Injection pump	1	
20	4810060624	Injection pump gasket	1	
30	4810060627	Injector assembly	3	
40	4810060602	Injector gasket	3	
50	4810060604	Dipstick	1	
60	4810060662	Oil filter gasket kit	1	
70	4810060668	Oil filling cap	1	
80	4810060601	Oil filling gasket	1	
90	4810060676	Fan	1	
100	4810060657	Radiator	1	
110	4810060666	Cap radiator	1	
120	4810060672	Thermostatic valve assembly	1	
130	4810060622	Thermostatic valve gasket	1	
140	4810060637	Water pump assembly	1	
150	4810060625	Water pump gasket	1	
160	4810060664	Air filter indicator	1	
170	4810060611	Catalyst assembly	1	
190	4810060630	Muffler	1	
200	4810060618	Muffler clamp	1	
210	4810060598	Alternator	1	
220	4810060634	Starter motor	1	
230	4810060648	Oil pressure switch	1	
240	4810060613	Wire harness	1	
250	4810060660	Temperature switch water	1	
260	4810060658	Speed sensor	1	
270	4810060659	T-map sensor	1	
280	4810060650	Fan protection	1	
290	4810068935	Egr valve	1	
300	4810068936	Gasket	1	
310	4810068937	Gasket	1	

Engine Engine Spare Parts - D2011L04

Refer to Parts Online for the most up to date information. The printed information might be outdated.

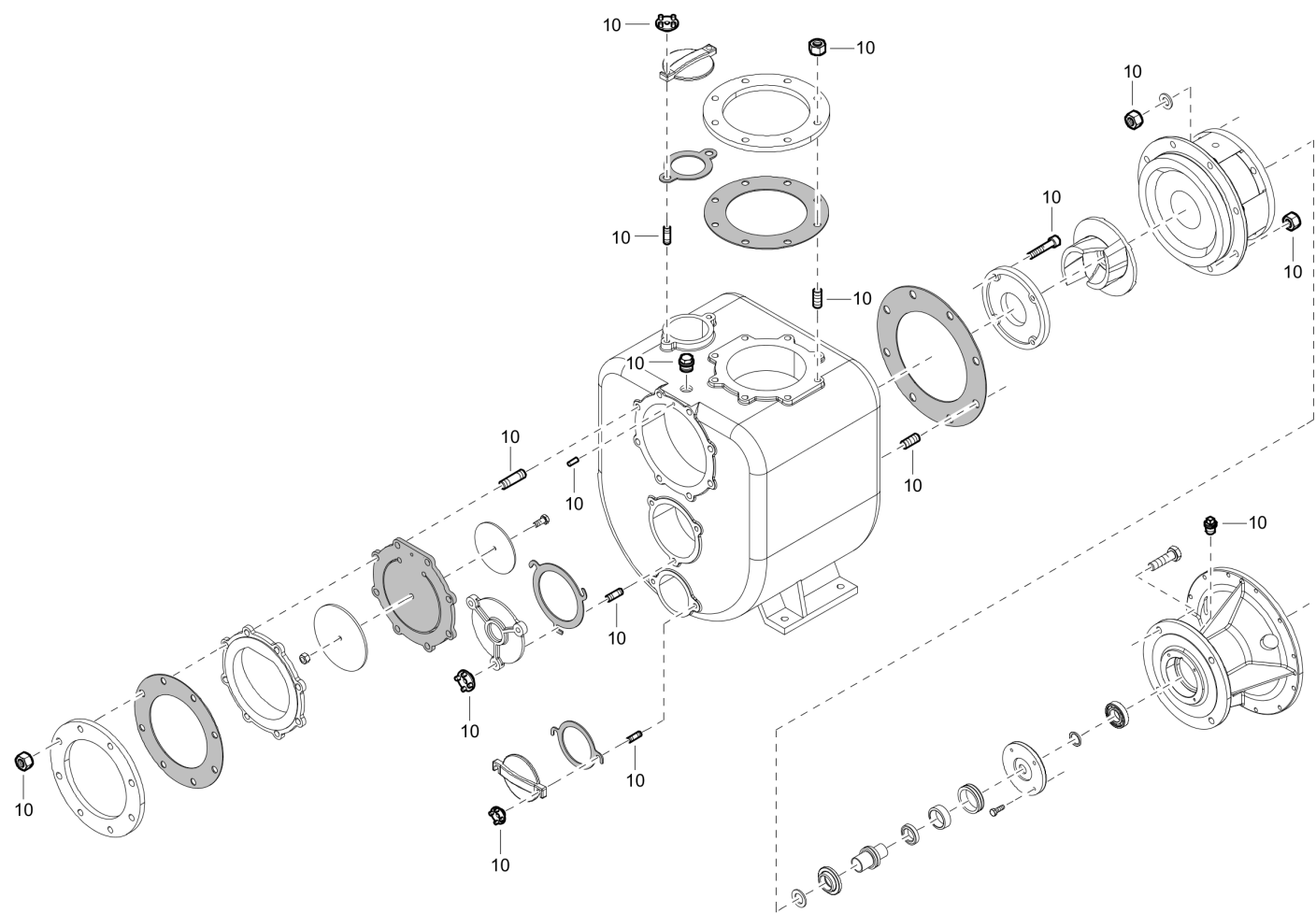
Tue May 12 11:30:25 UTC 2020

Item	Part No.	Name	Qty	L
10	4810061964	Oil plug gasket	1	
20	4810062274	Oil plug	1	
50	2913105300	Alternator belt	1	
60	2913148000	Voltage regulator	1	
70	2913212600	Oil pressure switch	1	
80	4810063278	Starter	1	
90	4810063276	Generator	1	
100	4810065880	Fuel injector pump	1	
110	4810063282	Relay	1	
120	2913211200	Hand pump	1	
130	4810063283	Dust enjector	1	
140	2913191300	Gasket set	1	
160	4810065882	Exchange injector	1	
170	4810065883	Exchange alternator	1	
180	2913141200	Lubricator oil pump	1	
190	2913212200	Oil cooler	1	
200	4810065894	Exhaust silencer	1	
210	4810065895	Cooling air baffle	1	
220	4810065896	Tensioning pulley	1	
230	4810065897	Cooling air baffle	1	
240	4810063287	Fuel supply pump	1	
250	4810065898	V-grooved pulley	1	
260	2913190200	Shutdown valve	1	
270	4810065899	V-belt guard	1	
280	2913172400	Blower jacket	1	
290	4810063295	Temperature transmitter	1	
300	4810063283	Dust enjector	1	
310	4810065900	Impeller	1	
320	4810065901	Flywheel	1	
330	4810065902	Gear rim	1	
340	4810063303	Dipstick	1	
350	4810065903	Cover	1	
360	2913144900	Fuel injector	4	
370	4810063305	Air cleaner assembly	1	
380	2913142300	Filler cap	1	

Refer to Parts Online for the most up to date information. The printed information might be outdated.

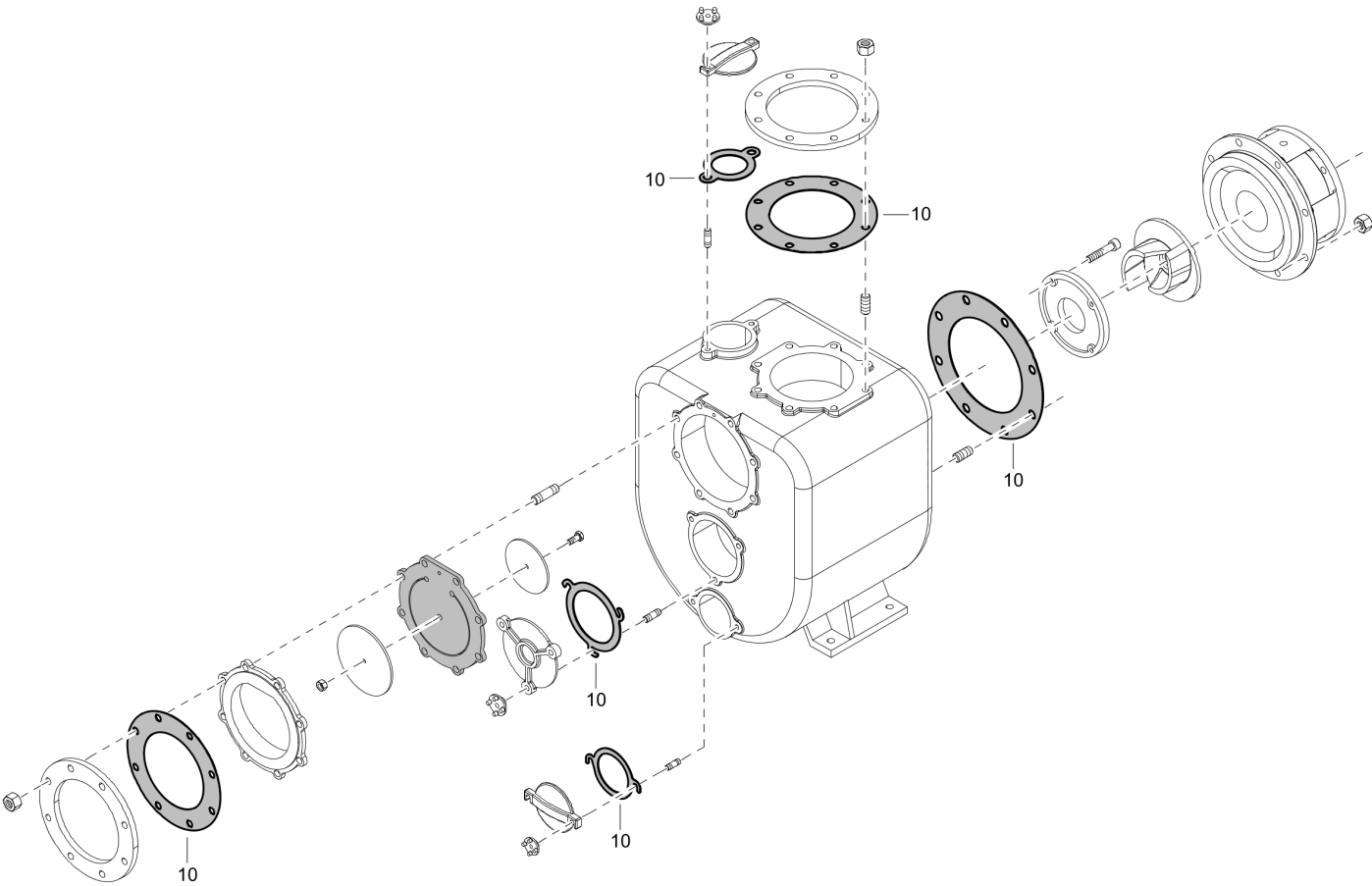
Tue May 12 11:30:25 UTC 2020

Mechanical 4810043676_00 Set of screws

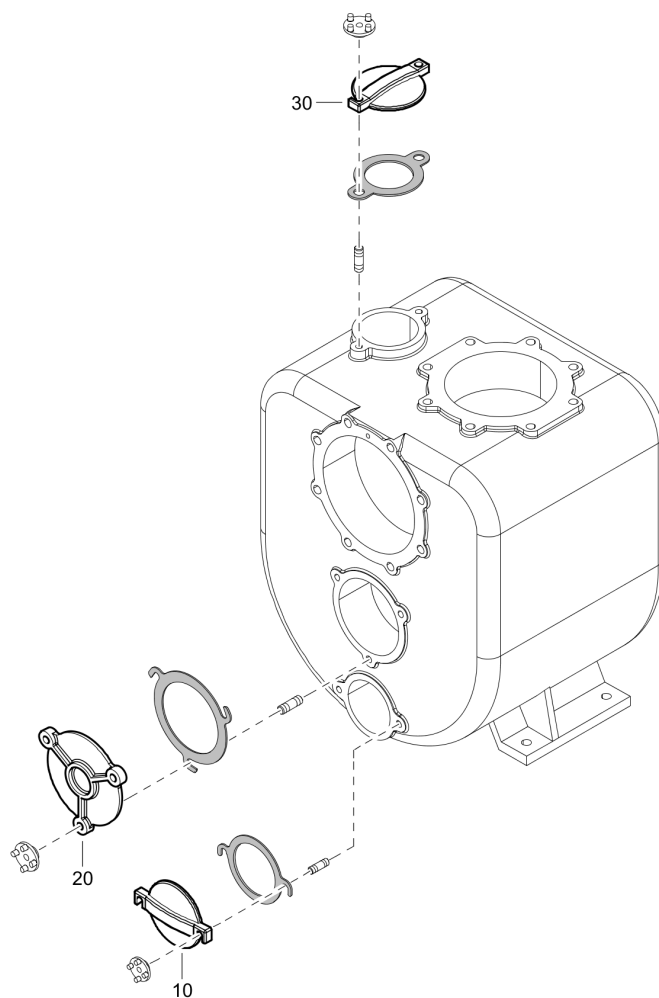


Item	Part No.	Name	Qty	L
10	4810043676	Set of screws	1	
-	4810001425	Nut	24	
-	4810001662	Grease nipple	1	
-	4810001775	Spring pin	1	
-	4810001827	Stud	5	
-	4810001830	Stud	16	
-	4810001832	Stud	8	
-	4810001917	Screw	4	
-	4810002379	Plug	1	
-	4810005772	Wrench	5	
-	4810001824	Stud	2	
-	4810005771	Wrench	2	

Mechanical 4810043677_00 Set of gaskets



Item	Part No.	Name	Qty	L
10	4810043677	Set of gaskets	1	
-	4810005555	Casing gasket	1	
-	4810005578	Casing gasket	1	
-	4810005685	Flange gasket	2	
-	4810005712	Cover gasket	1	
-	4810005715	Cover gasket	1	
-	4810005709	Cover gasket	1	

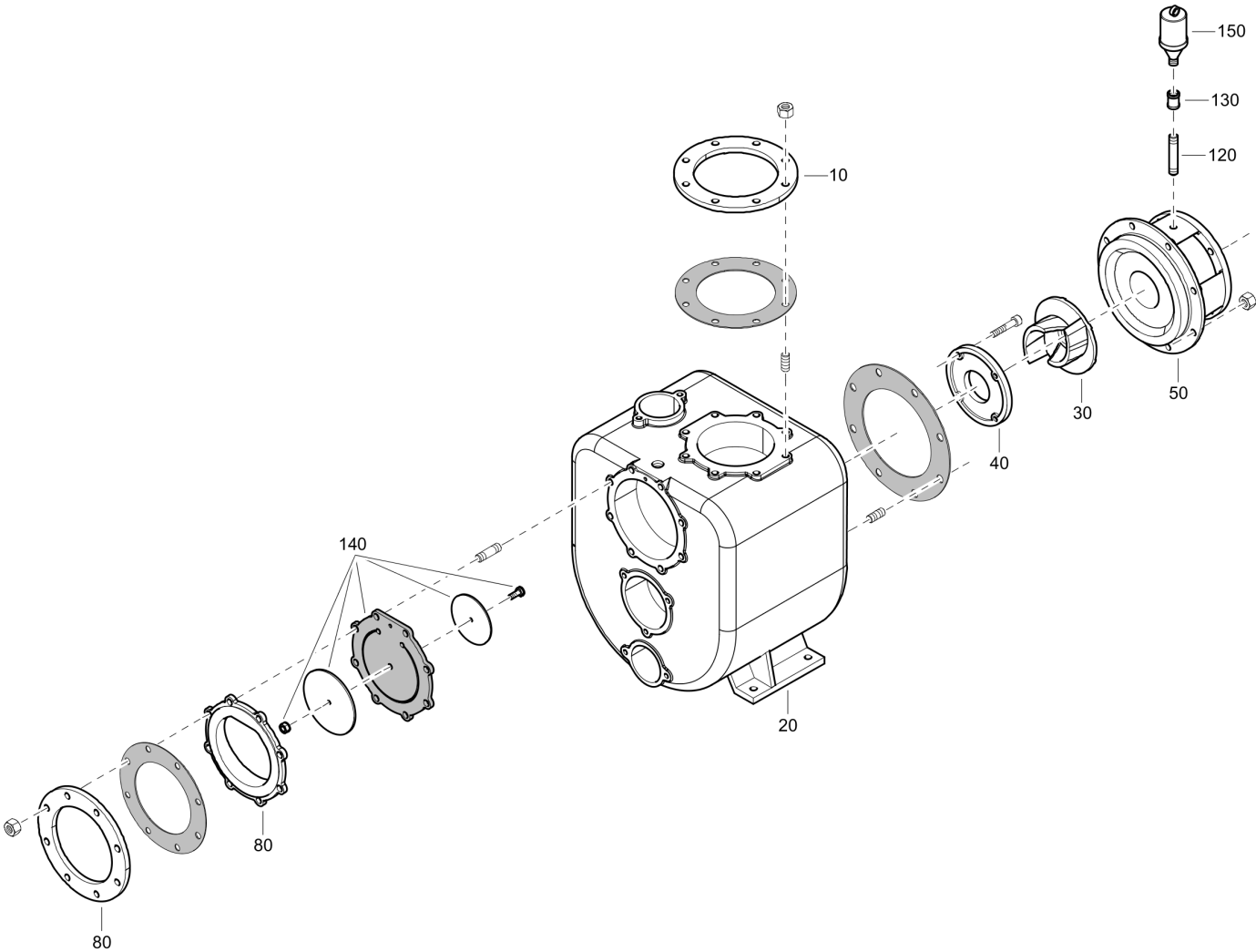
Mechanical 4810043675_00 Set of cover

Refer to Parts Online for the most up to date information. The printed information might be outdated.

Tue May 12 11:30:27 UTC 2020

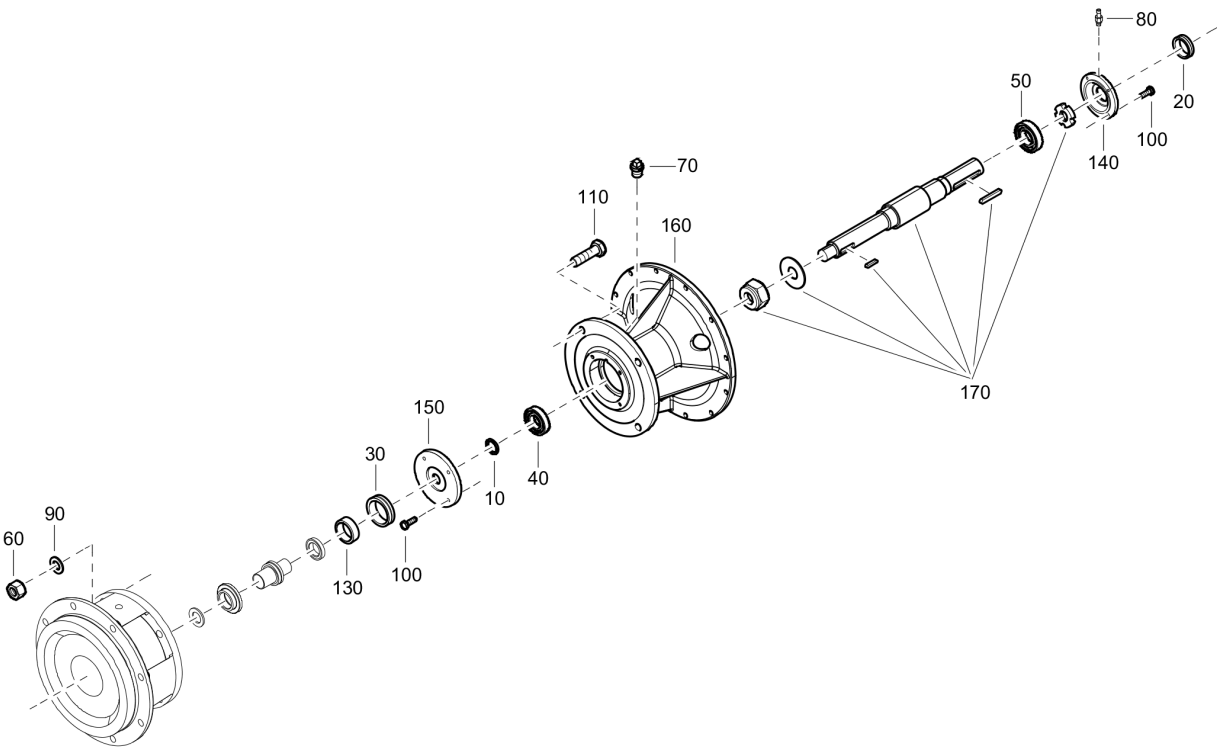
Item	Part No.	Name	Qty	L
10	4810006475	Cover	1	
20	4810006477	Cover	1	
30	4810006474	Cover	1	

Mechanical 4810009543_00 Pump core

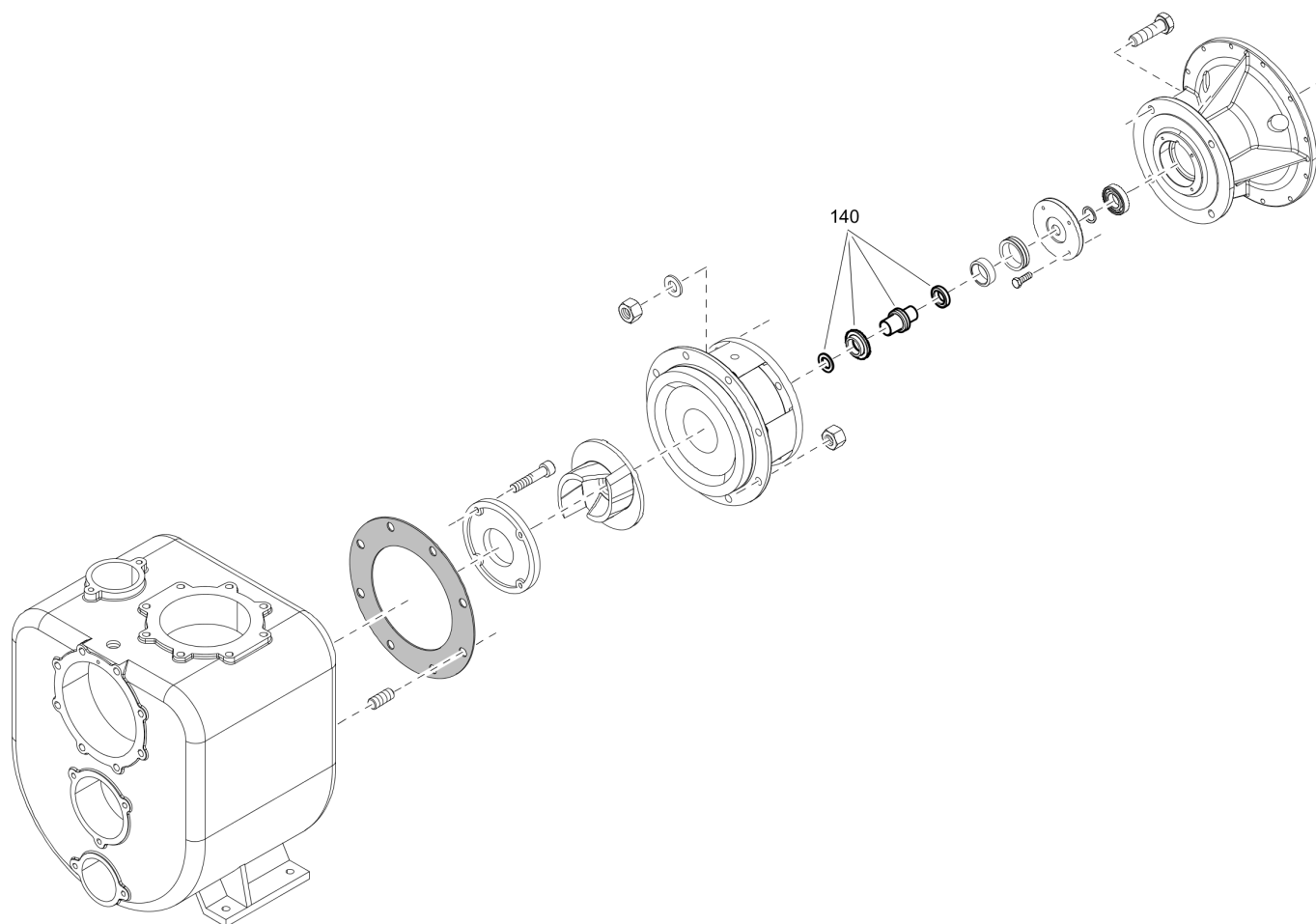


Item	Part No.	Name	Qty	L
10	4810001483	Flange	1	
20	4810044612	Casing	1	
30	4810005362	Impeller	1	
40	4810008454	Wear plate set	1	
50	4810006309	Head	1	
80	4810014263	Suction flange set	1	
120	4810006955	Pipe	1	
130	4810002352	Connection	1	
140	4810009028	Check valve assembly	1	
150	4810001662	Grease nipple	1	

Mechanical 4810023418_00 Extension



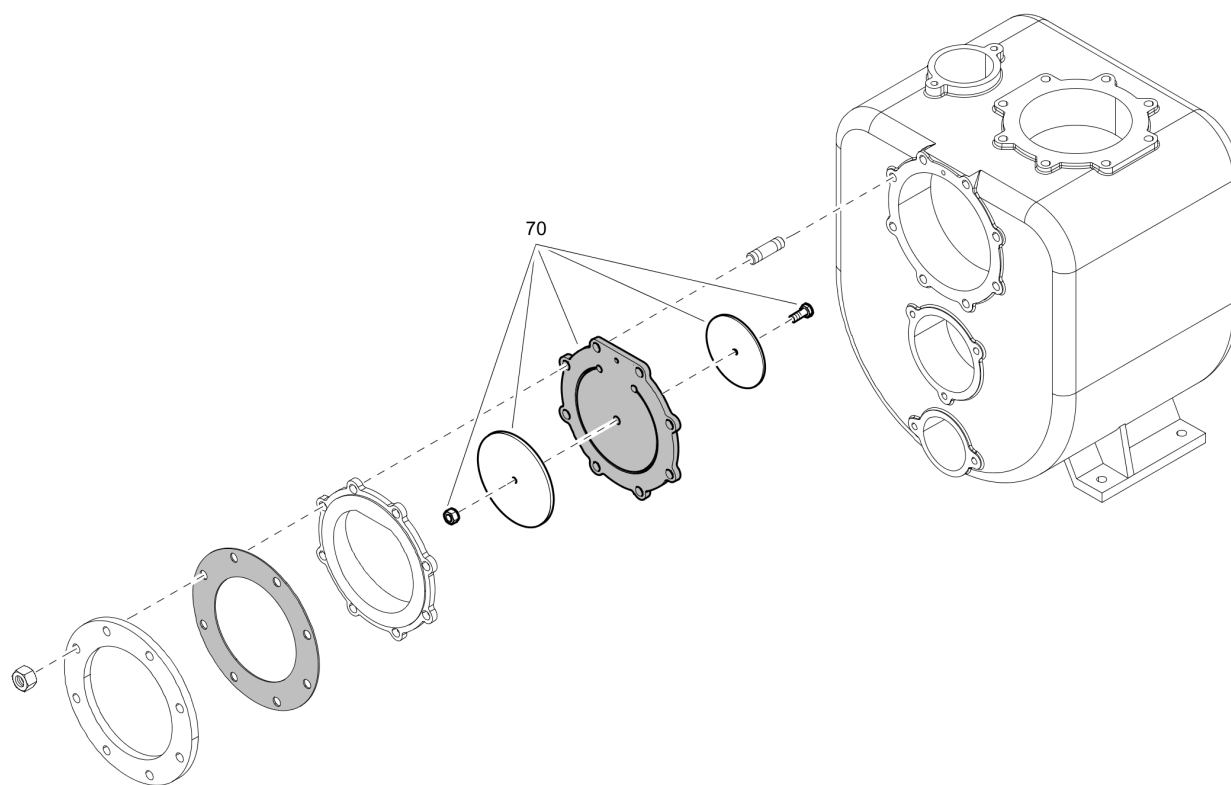
Item	Part No.	Name	Qty	L
10	4810001207	Ring	1	
20	4810001296	Ring	1	
30	4810001297	Ring	1	
40	4810001339	Ball bearing	1	
50	4810001388	Ball bearing	1	
60	4810001425	Nut	4	
70	4810001662	Grease nipple	1	
80	4810001665	Grease nipple	1	
90	4810001683	Washer	4	
100	4810001937	Screw	8	
110	4810001992	Screw	4	
130	4810004184	Lock ring	1	
140	4810004780	Bearing cover	1	
150	4810004781	Bearing cover	1	
160	4810006878	Support	1	
170	4810007595	Complete shaft assembly	1	

Mechanical 4810020623_00 Mechanical seal assembly

Refer to Parts Online for the most up to date information. The printed information might be outdated.

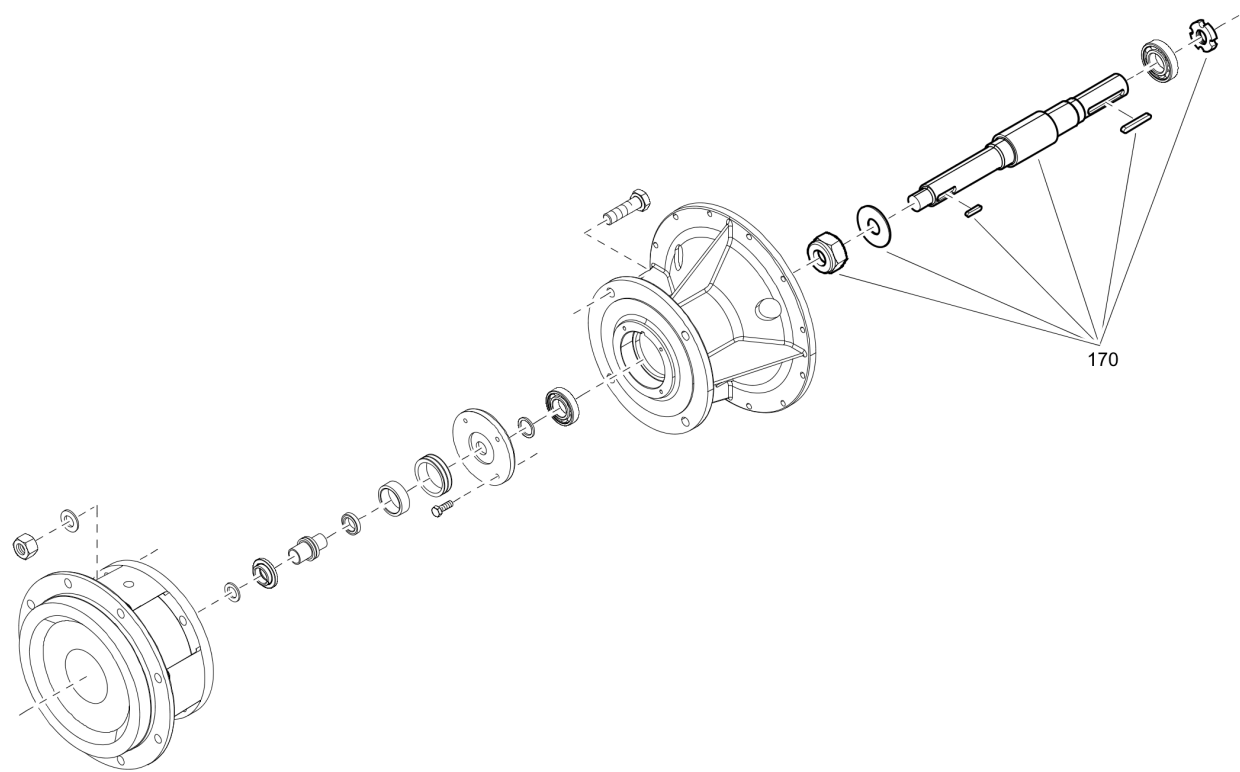
Tue May 12 11:30:29 UTC 2020

Item	Part No.	Name	Qty	L
140	4810020623	Mechanical seal assembly	1	

Mechanical 4810009028_00 Check valve assembly

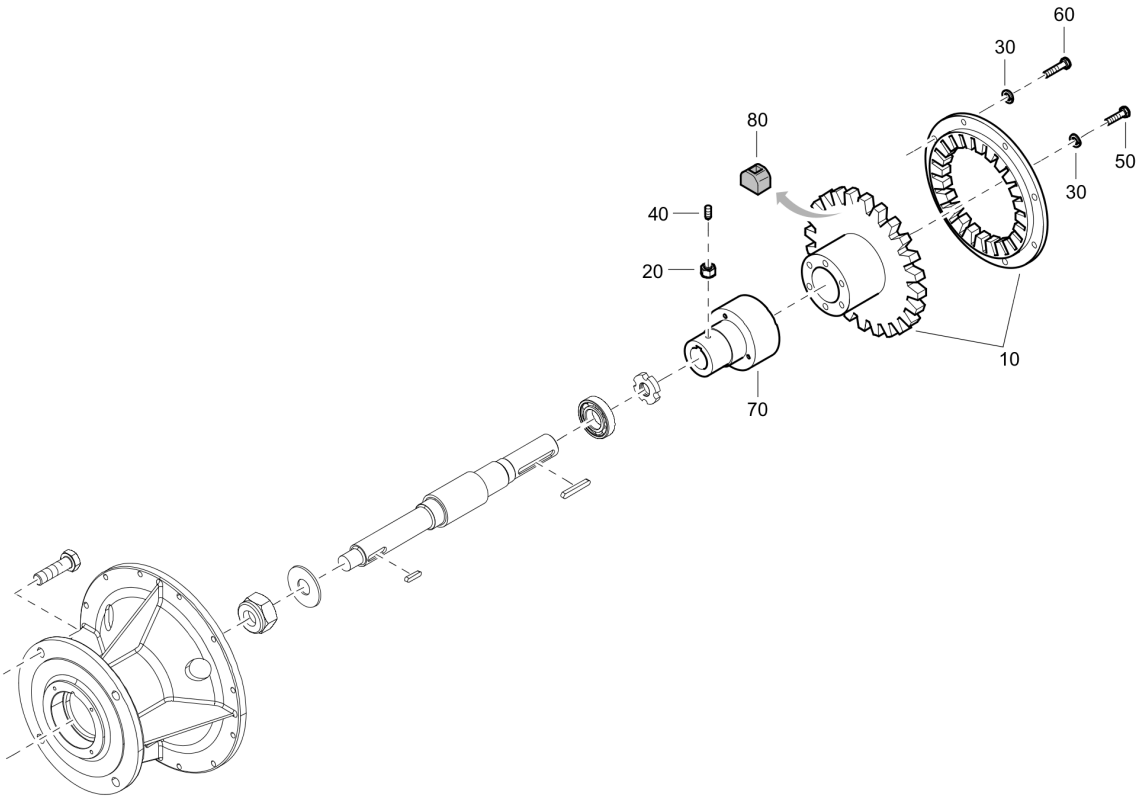
Item	Part No.	Name	Qty	L
70	4810009028	Check valve assembly	1	

Mechanical 4810007595_00 Complete shaft assembly



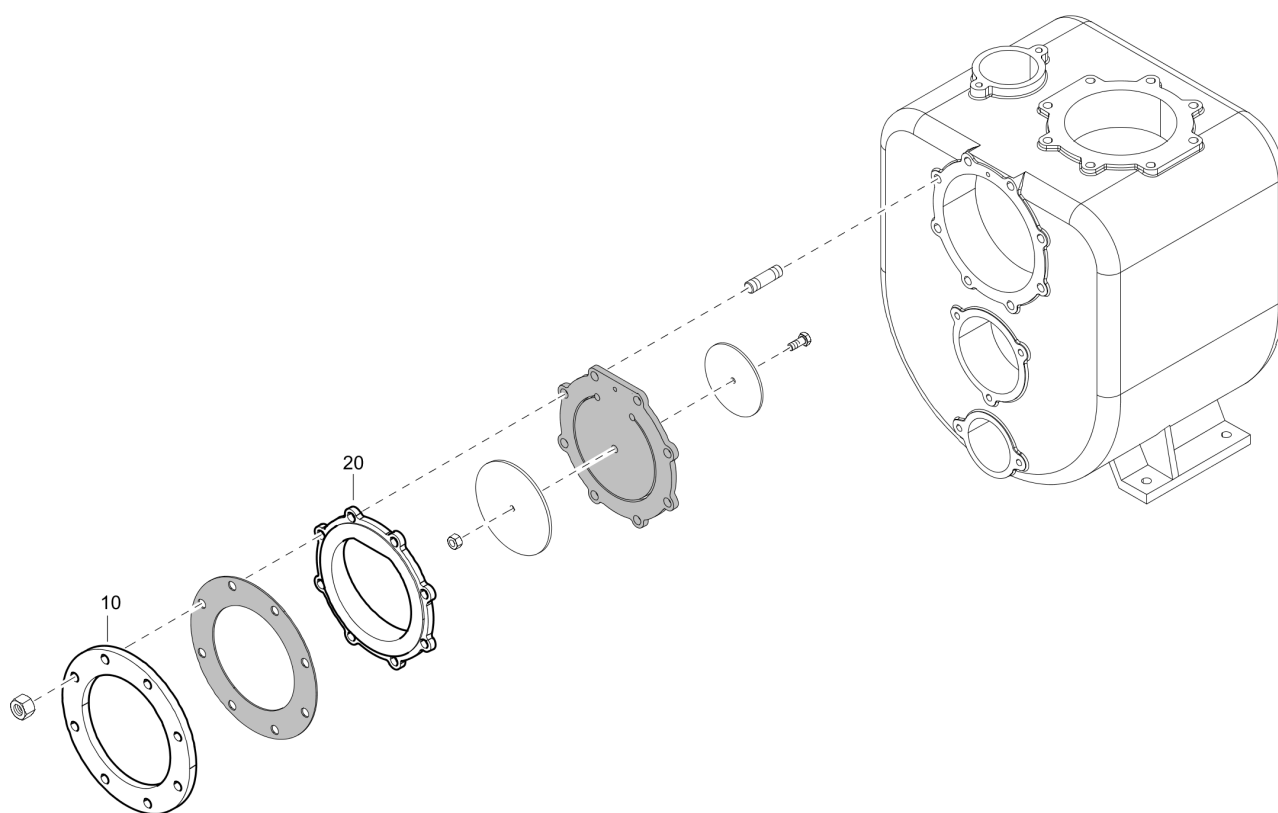
Item	Part No.	Name	Qty	L
170	4810007595	Complete shaft assembly	1	

Mechanical 4810008168_00 Coupling assembly

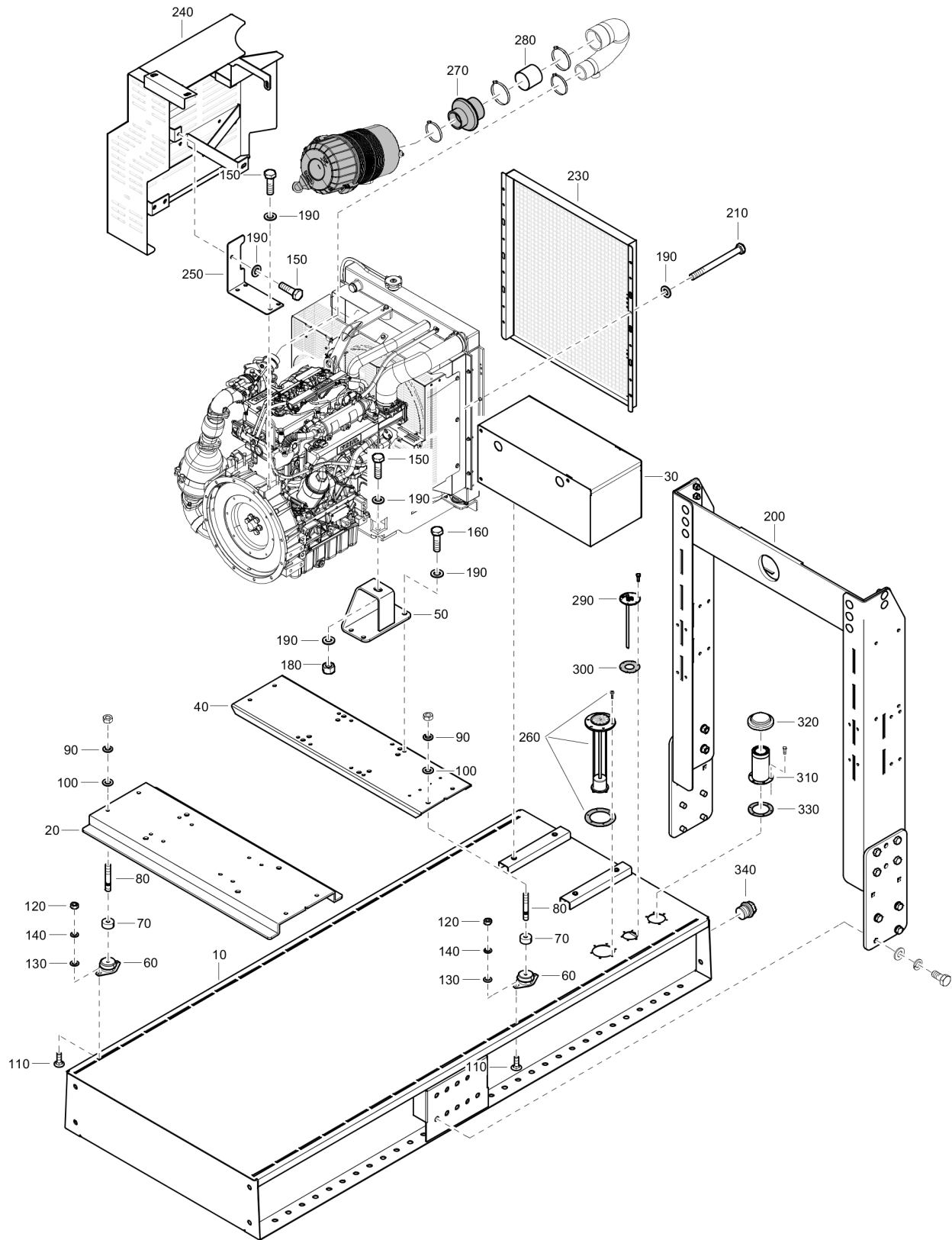


Item	Part No.	Name	Qty	L
10	4810000400	Coupling	1	
20	4810001454	Nut	8	
30	4810001680	Washer	16	
40	4810038558	Screw	4	
50	4810001949	Screw	8	
60	4810001950	Screw	8	
70	4810005823	Pulley hub	1	
80	4810054358	Coupling repair kit	1	

Mechanical 4810014263_00 Suction flange set



Item	Part No.	Name	Qty	L
10	4810001483	Flange	1	
20	4810006432	Check valve housing	1	

Mechanical 4810060167_00 Frame arrangement - KDI 1903 TCR

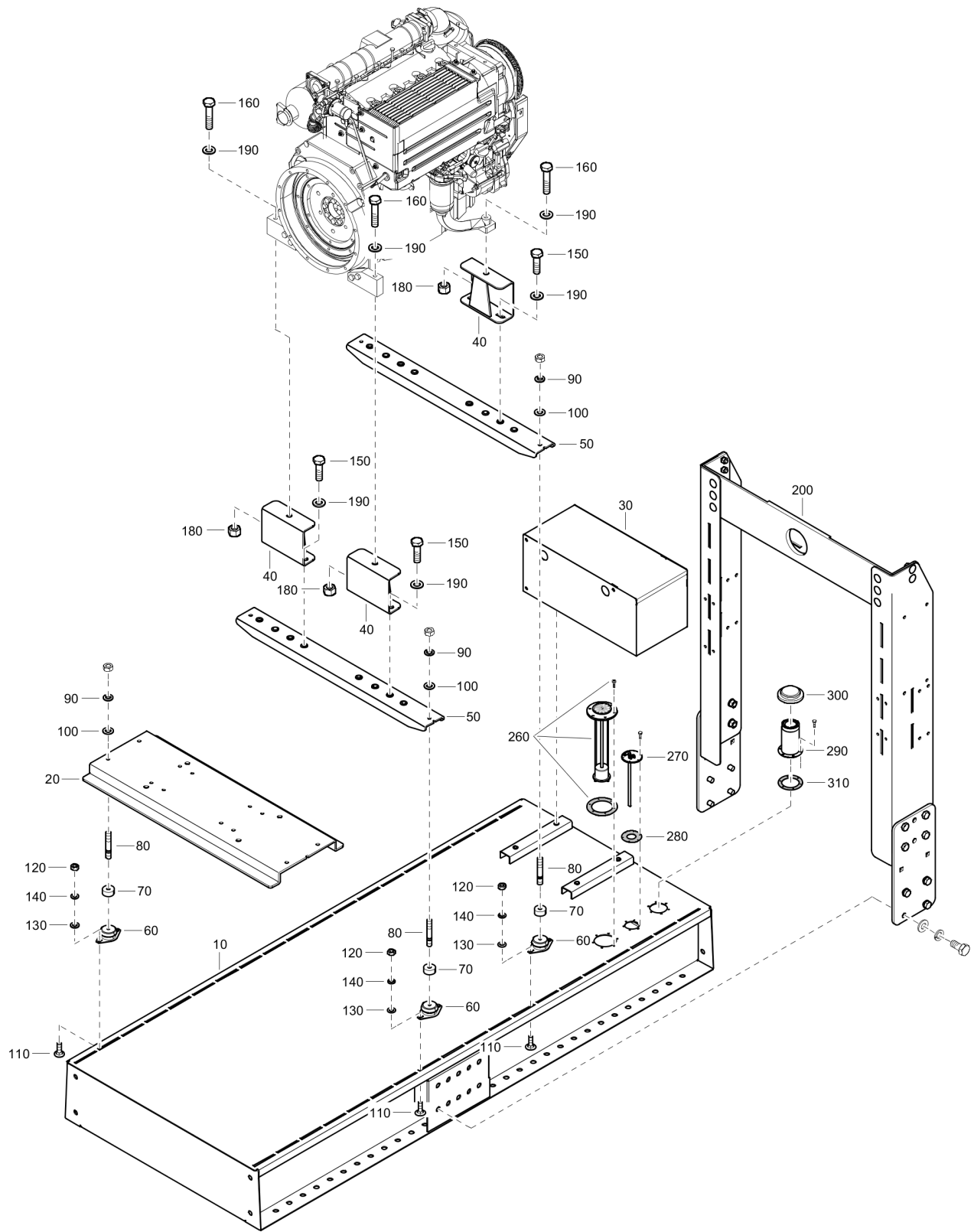
Refer to Parts Online for the most up to date information. The printed information might be outdated.

Tue May 12 11:30:32 UTC 2020

Item	Part No.	Name	Qty	L
10	4810060384	Tank assembly	1	
20	4810063428	Pump support	1	
30	-	Complete battery assembly	1	
40	4810059243	Support	1	
50	4810059330	Engine support	2	
60	4810063627	Antivibration pad	8	
70	4810047138	Spacer	8	
80	4810001826	Stud	8	
90	4810001680	Washer	8	
100	4810001705	Washer	8	
110	4810036239	Screw	16	
120	4810001420	Nut	16	
130	4810001689	Washer	16	
140	4810001679	Washer	16	
150	4810001961	Screw	14	
160	4810001964	Screw	4	
180	4810001422	Nut	4	
190	4810039995	Washer	12	
200	-	Lifting bar assembly	1	
210	4810053161	Screw	4	
230	4810058479	Protection	1	
240	4810057207	Protection	1	
250	4810057208	Bracket	1	
260	-	Level indicator assembly	1	
270	4810057205	Sleeve	1	
280	4810054080	Pipe	1	
290	4810065466	Fuel in/out	1	
300	4810063626	Gasket	1	
310	4810063156	Fuel feeder	1	
320	4810057099	Secured cap	1	
330	4810063155	Gasket	1	
340	4810002383	Plug	1	

Refer to Parts Online for the most up to date information. The printed information might be outdated.

Tue May 12 11:30:32 UTC 2020

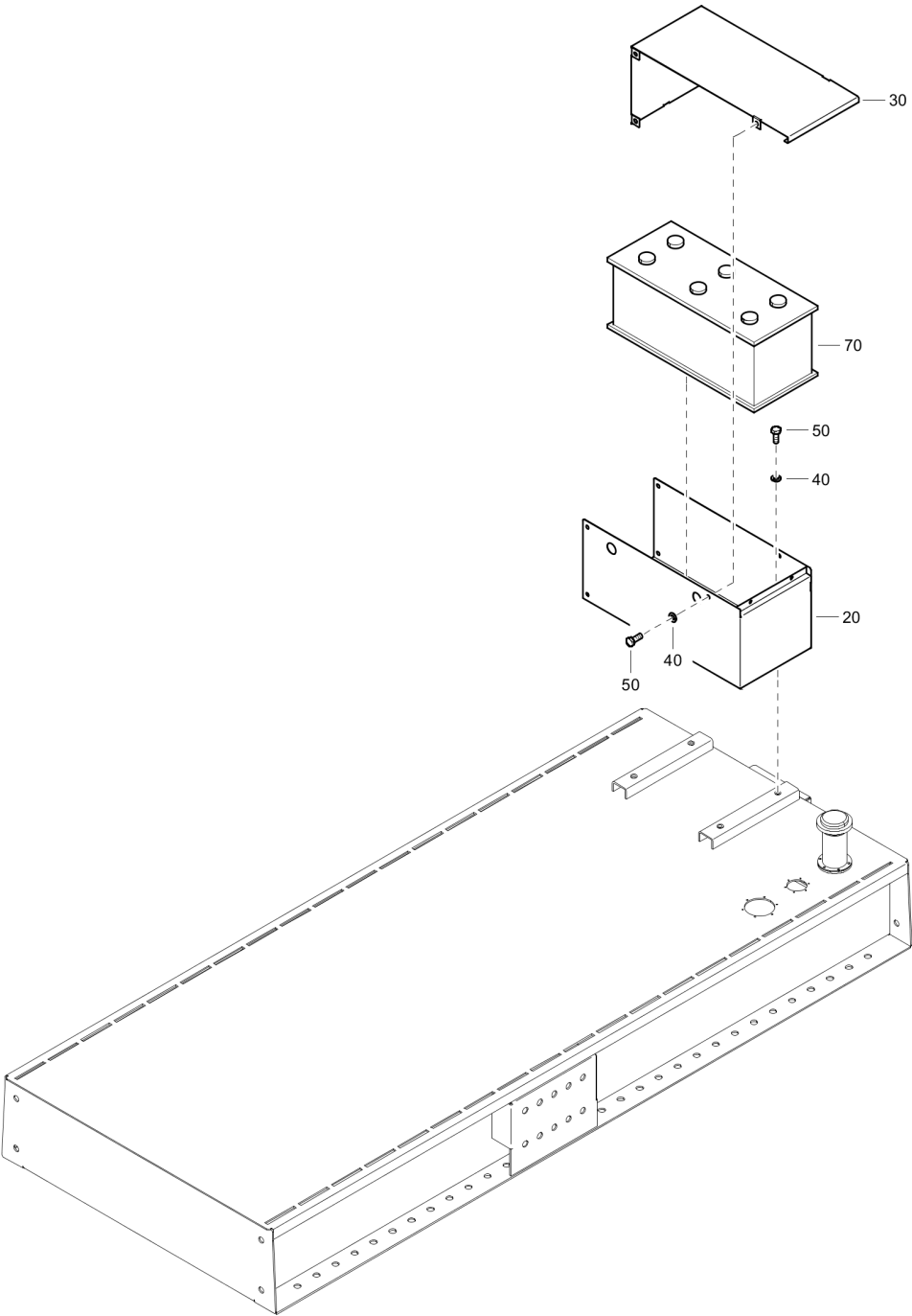
Mechanical 4810063230_00 Frame arrangement - D2011L04

Refer to Parts Online for the most up to date information. The printed information might be outdated.

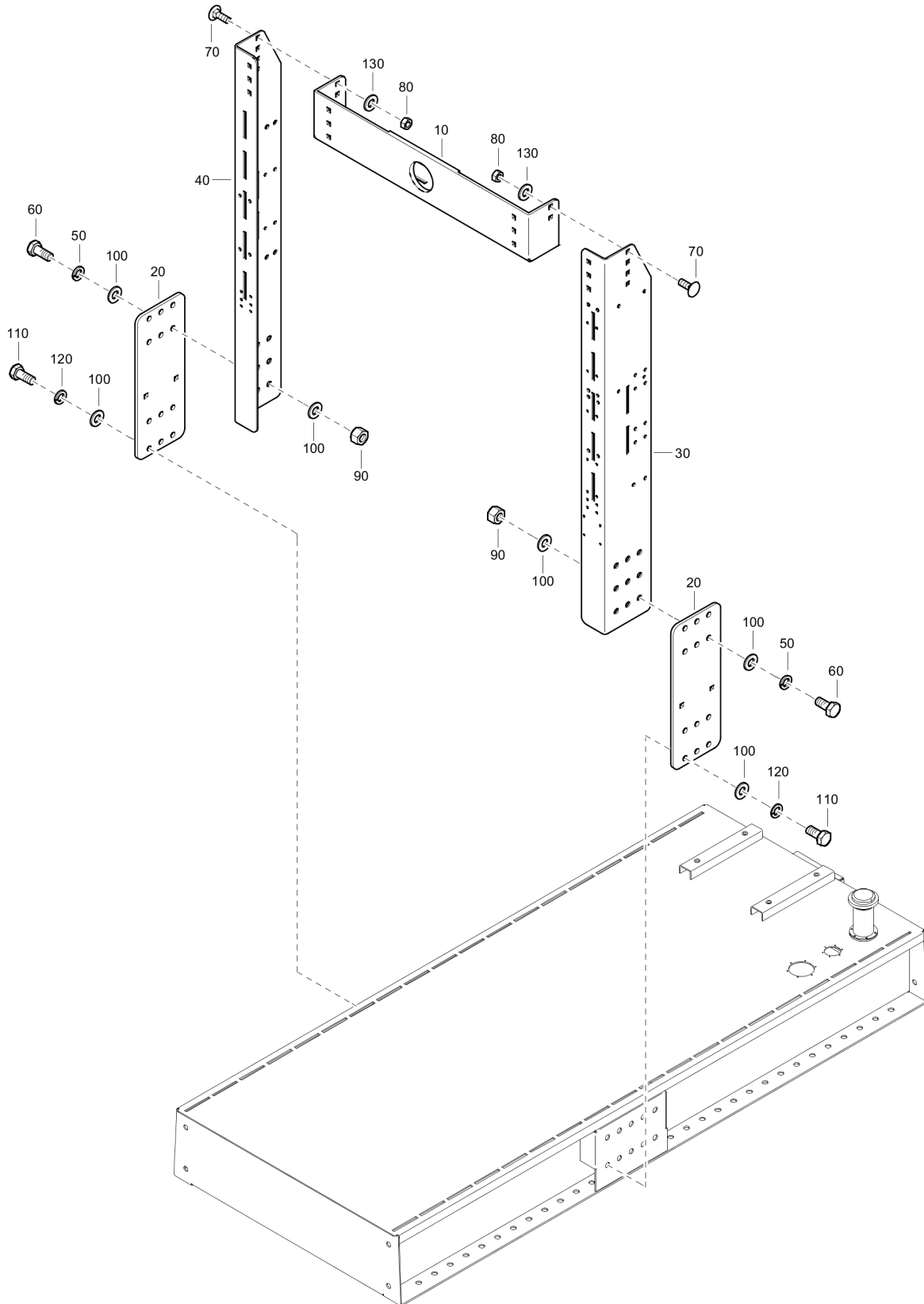
Tue May 12 11:30:33 UTC 2020

Item	Part No.	Name	Qty	L
10	4810060384	Tank assembly	1	
20	4810063428	Pump support	1	
30	-	Complete battery assembly	1	
40	4810063223	Support	4	
50	4810063225	Support	2	
60	4810063627	Antivibration pad	8	
70	4810047138	Spacer	8	
80	4810001826	Stud	8	
90	4810001680	Washer	8	
100	4810001705	Washer	8	
110	4810036239	Screw	16	
120	4810001420	Nut	16	
130	4810001689	Washer	16	
140	4810001679	Washer	16	
150	4810001961	Screw	14	
160	4810001964	Screw	4	
180	4810001422	Nut	4	
190	4810039995	Washer	12	
200	-	Lifting bar assembly	1	
260	-	Level indicator assembly	1	
270	4810065466	Fuel in/out	1	
280	4810063626	Gasket	1	
290	4810063156	Fuel feeder	1	
300	4810057099	Secured cap	1	
310	4810063155	Gasket	1	

Mechanical 4810059181_00 Complete battery assembly



Item	Part No.	Name	Qty	L
20	4810059182	Battery support	1	
30	4810059183	Battery cover	1	
40	4810001679	Washer	6	
50	4810001938	Screw	6	
70	4810002442	Battery	1	

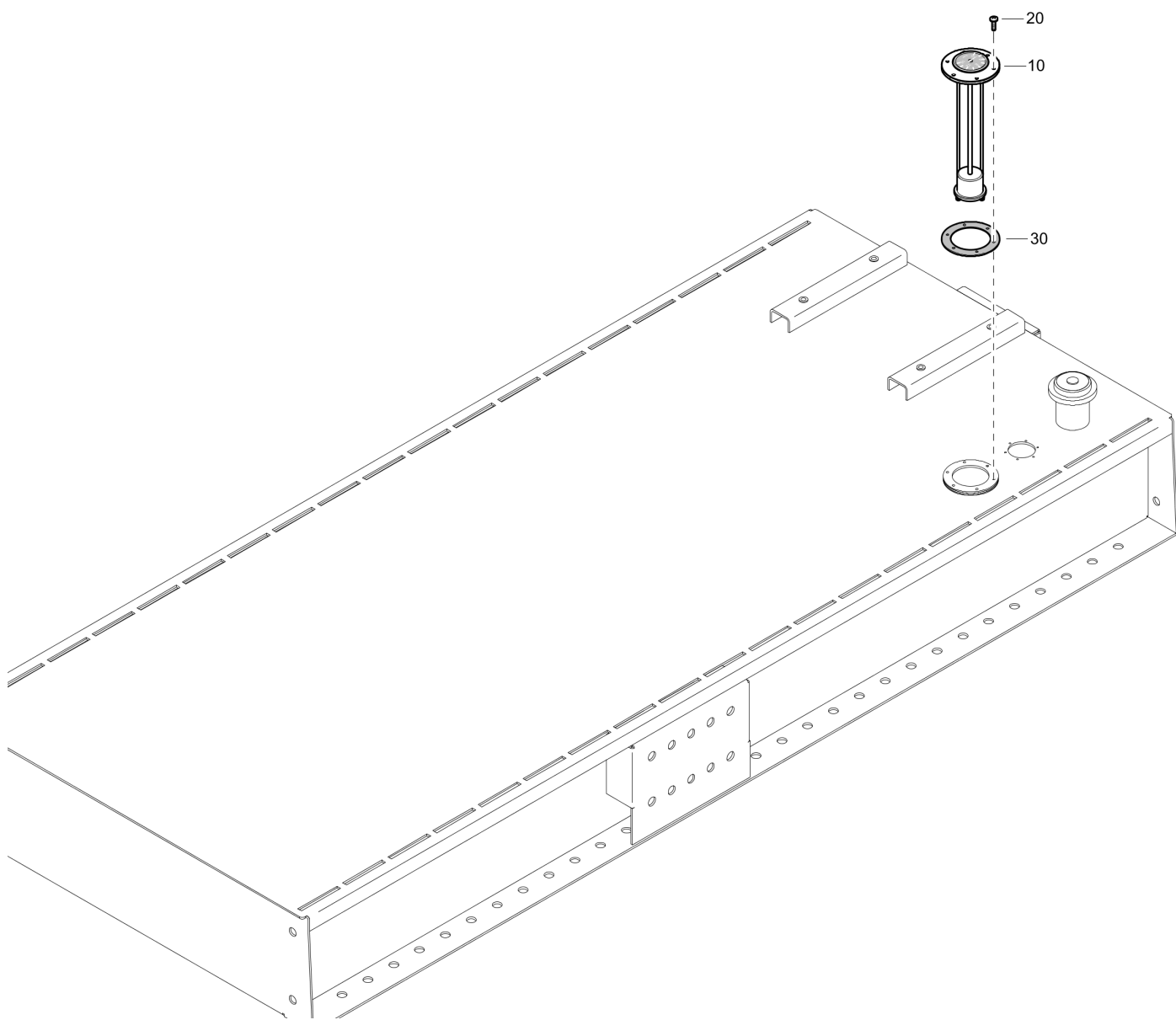
Mechanical 4810062881_00 Lifting bar assembly

Refer to Parts Online for the most up to date information. The printed information might be outdated.

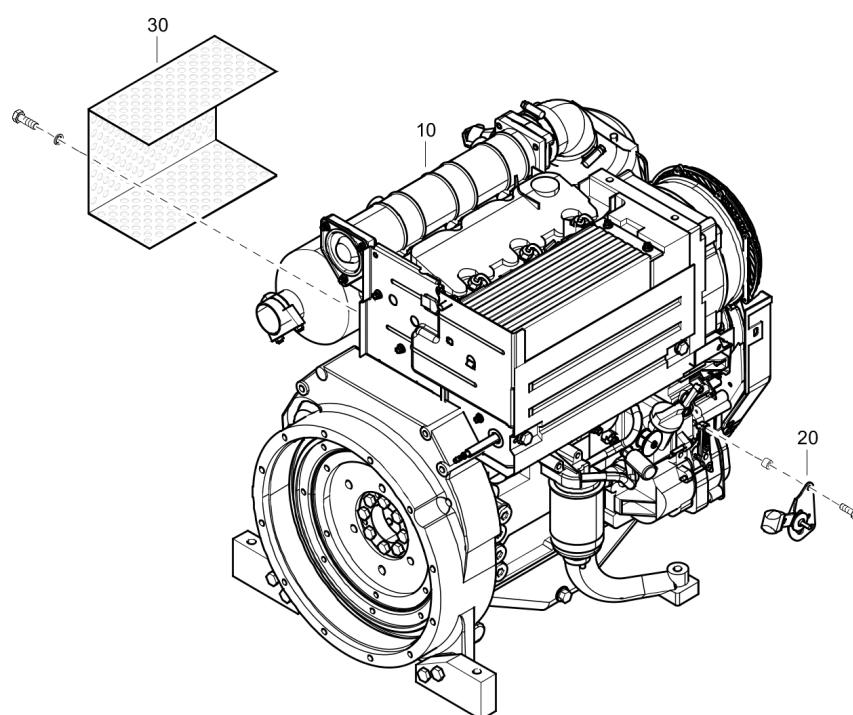
Tue May 12 11:30:35 UTC 2020

Item	Part No.	Name	Qty	L
10	4810053456	Lifting beam	1	
20	4810058941	Lifting plate	2	
30	4810058940	Lifting corner	1	
40	4810058939	Lifting corner	1	
50	4810001683	Washer	12	
60	4810001974	Screw	12	
70	4810036238	Screw	10	
80	4810001455	Nut	10	
90	4810001456	Nut	12	
100	4810001693	Washer	36	
110	4810001972	Screw	12	
120	4810001683	Washer	12	
130	4810001699	Washer	10	

Mechanical 4810056618_00 Fuel indicator assembly



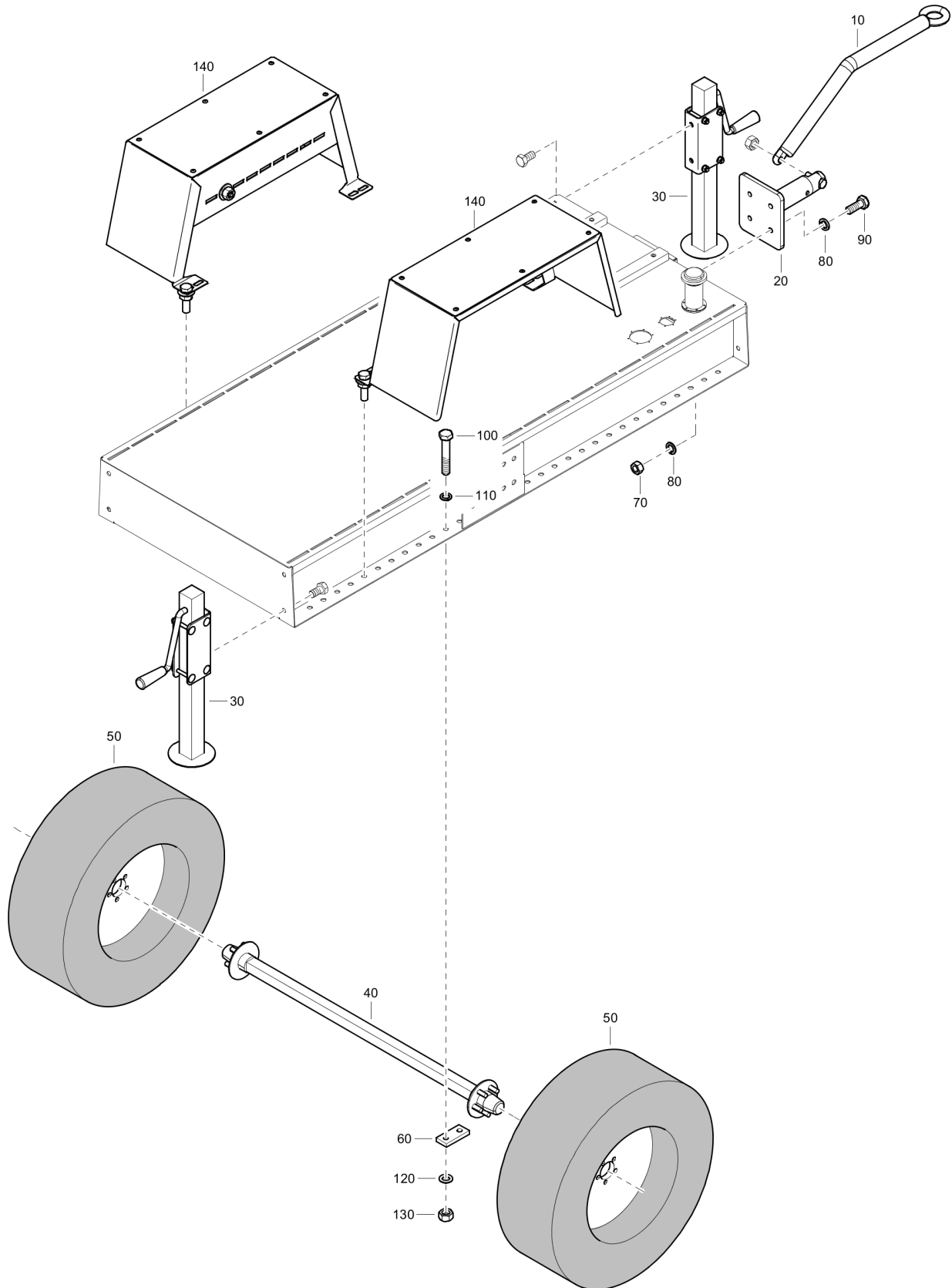
Item	Part No.	Name	Qty	L
10	4810056553	Fuel indicator	1	
20	4810032680	Screw	6	
30	4810062637	Gasket	1	

Mechanical 4810057953_00 Complete engine assembly - D2011L04

Refer to Parts Online for the most up to date information. The printed information might be outdated.

Tue May 12 11:30:36 UTC 2020

Item	Part No.	Name	Qty	L
10	4810057952	Engine	1	
20	4810002973	Engine speed control	1	
30	4810035007	Muffler Protection	1	

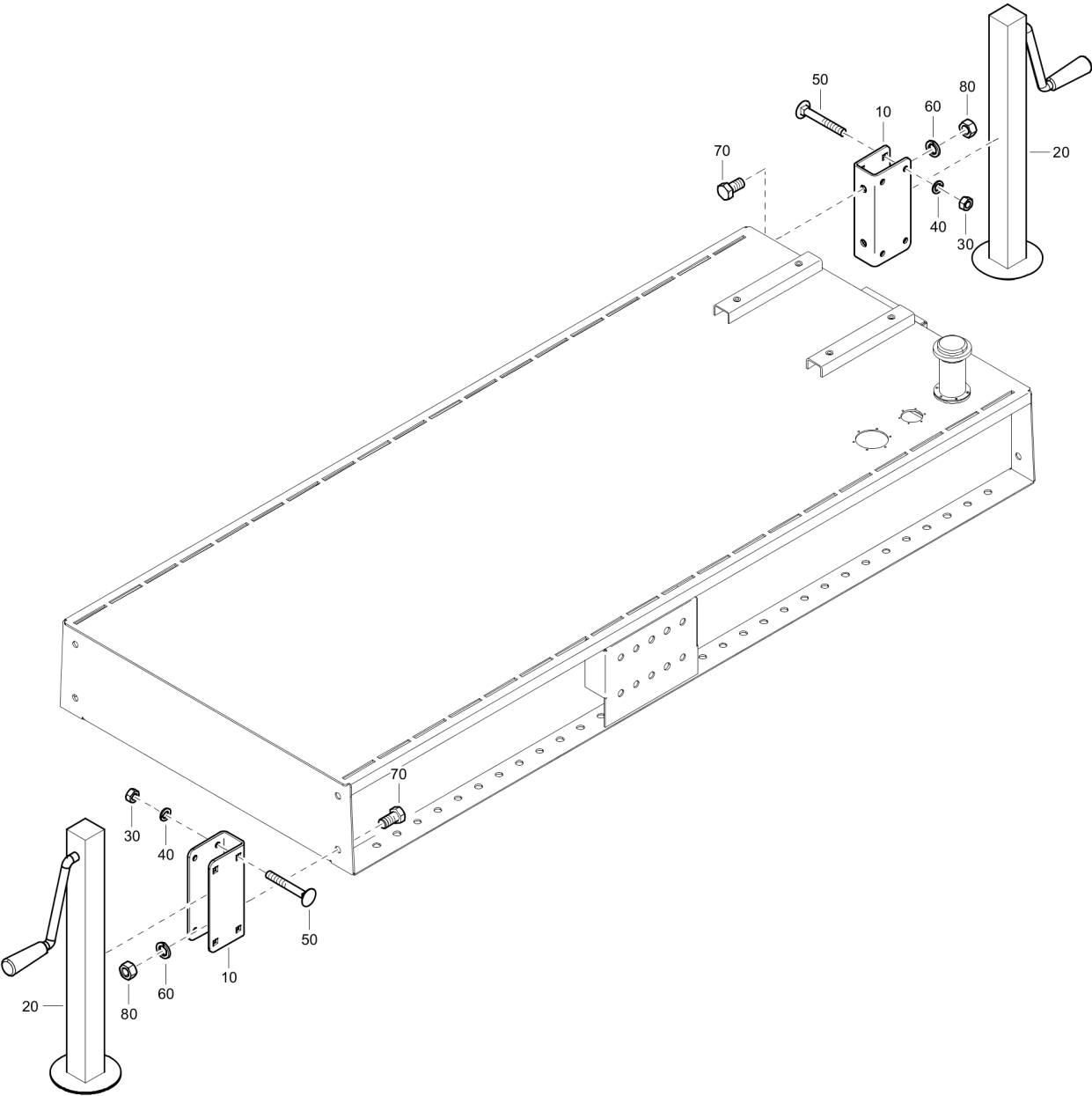
Options / accessories 4810061906_00 Trailer assembly - D2011L04

Refer to Parts Online for the most up to date information. The printed information might be outdated.

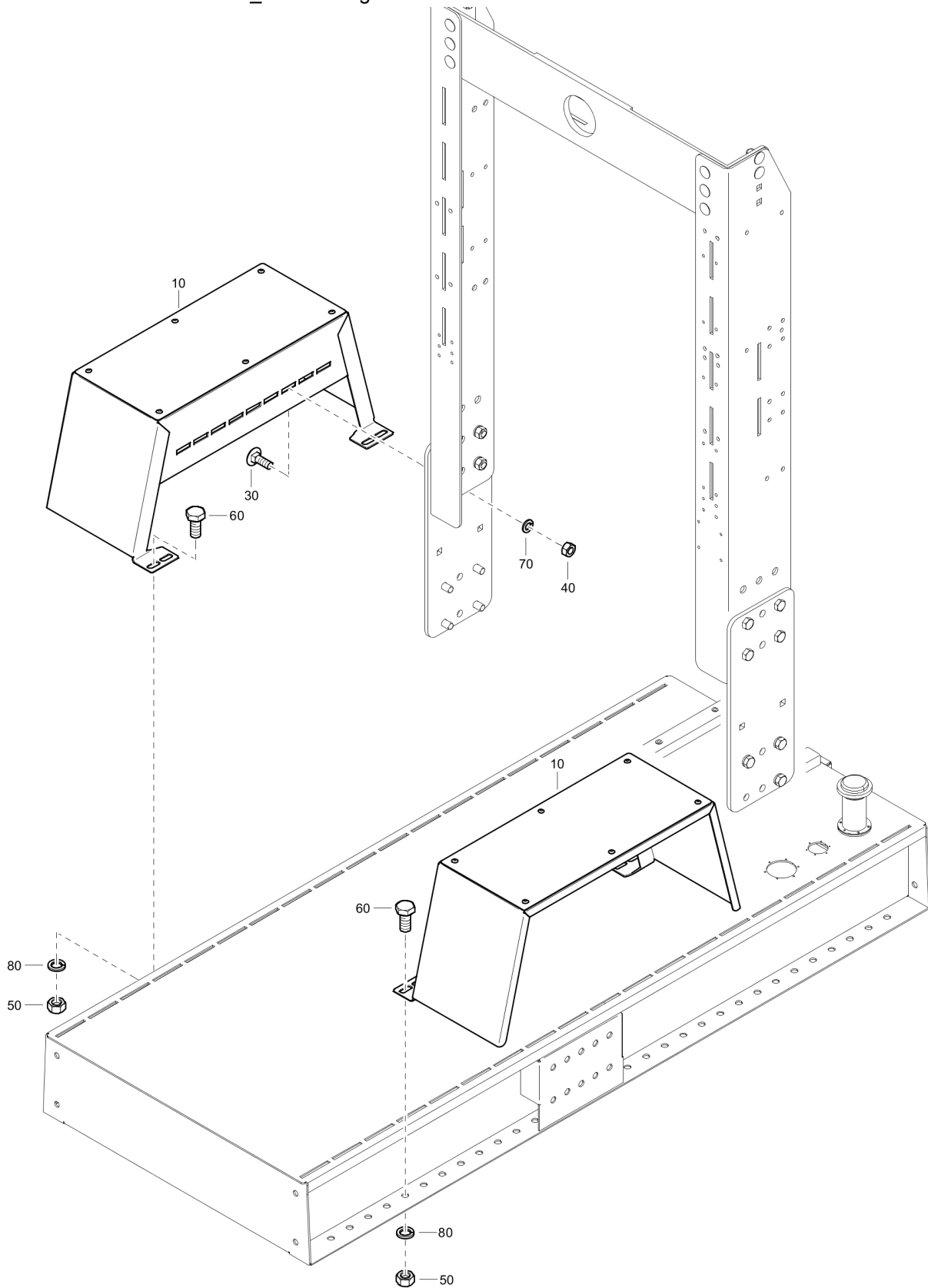
Tue May 12 11:30:38 UTC 2020

Item	Part No.	Name	Qty	L
10	4810058934	Towbar	1	
20	4810058935	Towbar bracket	1	
30	-	Foot assembly	2	
40	4810007053	Axle	1	
50	4810056277	Wheel	2	
60	4810056883	Axle fixing plate	2	
70	4810001456	Nut	4	
80	4810001683	Washer	8	
90	4810001973	Screw	4	
100	4810001979	Screw	4	
110	4810001686	Washer	4	
120	4810040027	Washer	4	
130	4810001425	Nut	4	
140	-	Kit mudguards	1	

Options / accessories 4810055266_00 Foot assembly - D2011L04



Item	Part No.	Name	Qty	L
10	4810053533	Foot support	2	
20	4810054532	Foot	2	
30	4810001422	Nut	8	
40	4810001681	Washer	8	
50	4810053535	Screw	8	
60	4810001683	Washer	4	
70	4810001971	Screw	4	
80	4810001456	Nut	4	

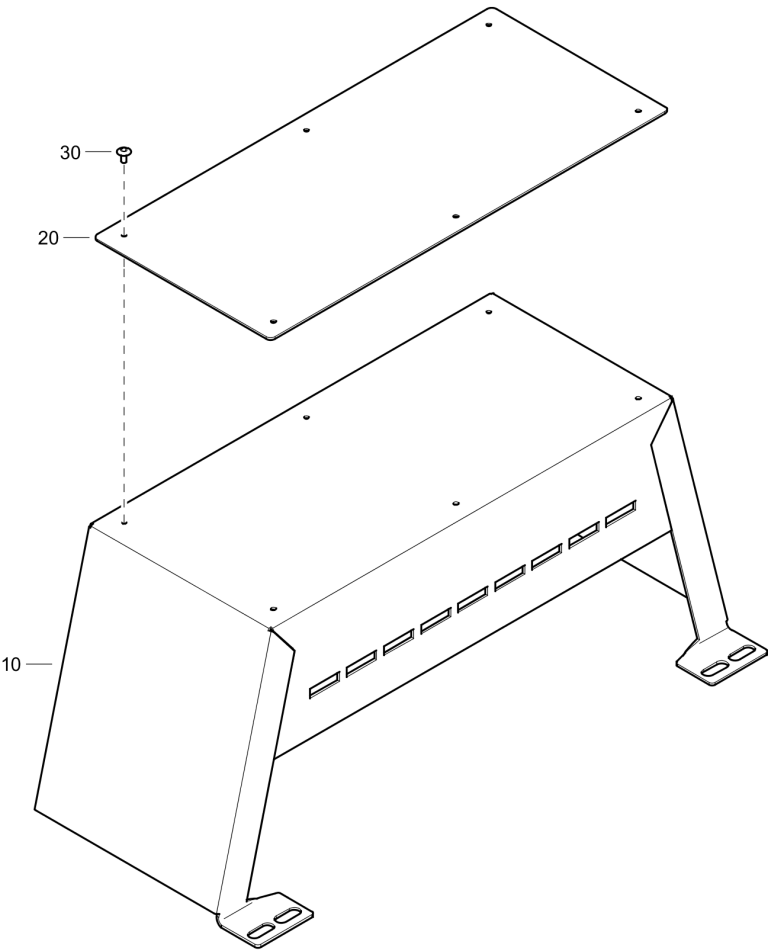
Options / accessories 8381060033_00 Kit mudguards - D2011L04

Refer to Parts Online for the most up to date information. The printed information might be outdated.

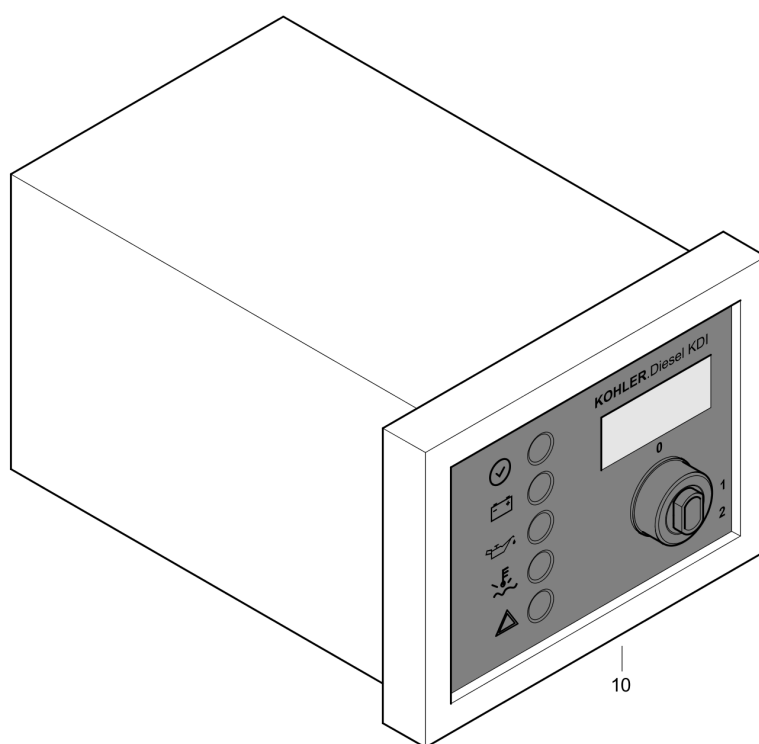
Tue May 12 11:30:39 UTC 2020

Item	Part No.	Name	Qty	L
10	-	Mudguard assembly	2	
30	4810036238	Screw	2	
40	4810001422	Nut	2	
50	4810001456	Nut	4	
60	4810001972	Screw	4	
70	4810001681	Washer	2	
80	4810001683	Washer	4	

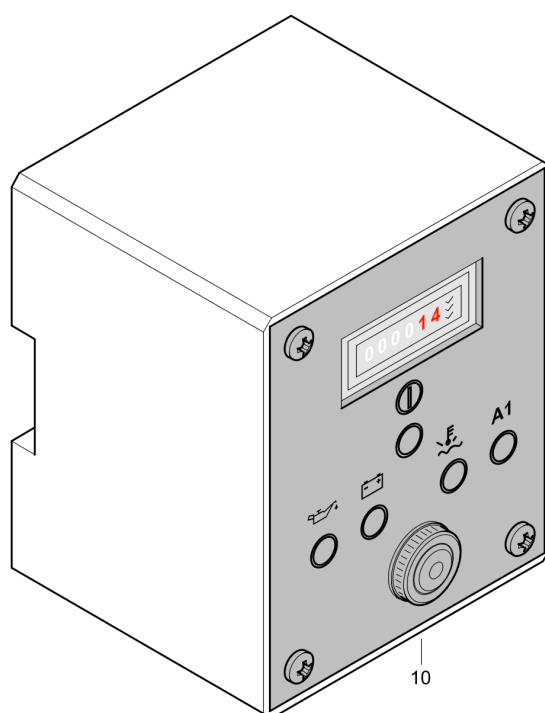
Options / accessories 4810058943_00 Mudguard assembly - D2011L04



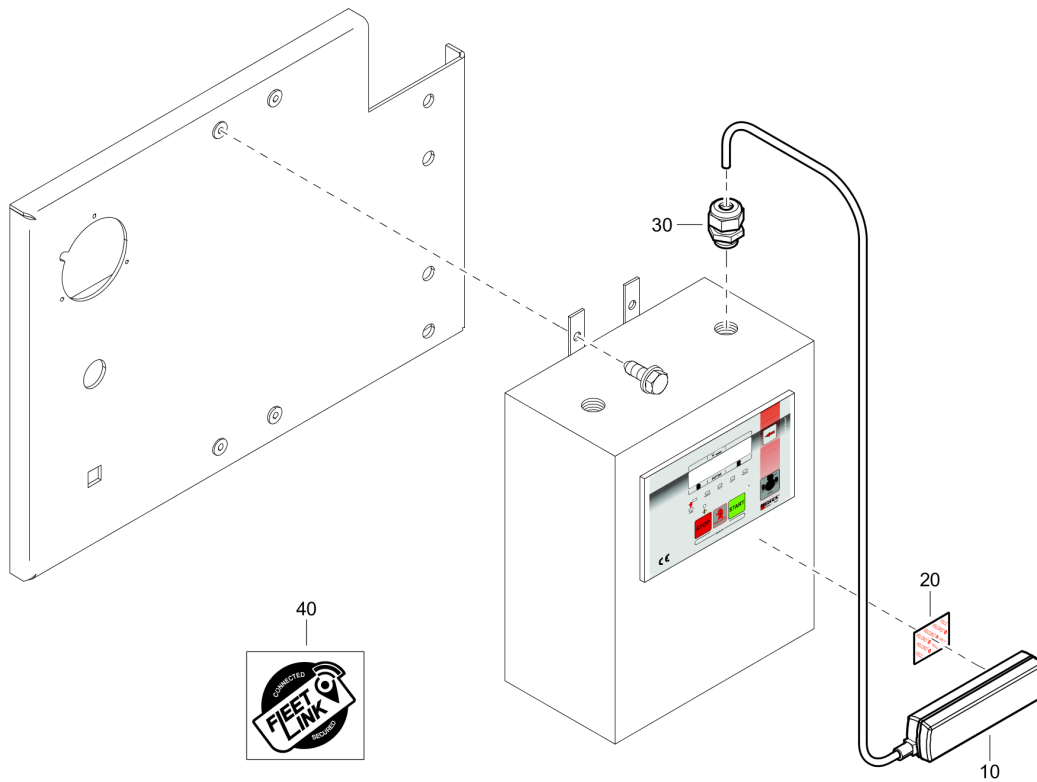
Item	Part No.	Name	Qty	L
10	4810058942	Mudguard	2	
20	4810056280	Protection	2	
30	4810053515	Rivet	12	

Options / accessories 4810061154_00 Control panel - KDI 1903 TCR

Item	Part No.	Name	Qty	L
10	4810061154	Control panel	1	

Options / accessories 4810049113_00 Control panel - D2011L04

Item	Part No.	Name	Qty	L
10	4810049113	Control panel	1	

Options / accessories 4810066428_00 Fleetlink locator retrofit kit

Item	Part No.	Name	Qty	L
10	-	Locator module	1	
20	-	Velcro® strips	2	
30	-	Cable gland	1	
40	-	Fleetlink sticker	1	

Any unauthorized use or copying of the contents or any part thereof is prohibited.
This applies in particular to trademarks, model denominations, part numbers, and
drawings.

