

# VAR 4-250 D ITH

---



## Spare Parts List

### Self Priming Centrifugal Pump

VAR 4-250 D ITH s/n ITH00000001 -

Engine: 9LD625-2 / KDI 1903 M / D2011L03



## General information

This spare parts list applies to the following:

Part number	Description
8381060465	VAR 4-250 - KDI 1903 M
8381061205	VAR 4-250 - 9LD625-2
8381061499	VAR 4-250 - D2011L03

Use only authorized parts. Any damage or malfunction caused by the use of unauthorized parts is not covered by Warranty or Product Liability. Any unauthorized use or copying of the contents or any part thereof is prohibited. This applies in particular to trademarks, model denominations, part numbers, and drawings.

### Instructions for use

This spare parts list contains no safety regulations and is merely intended to assist in the ordering of spare parts.

For information about operating, servicing, or repairing, the relevant Safety and operating instructions must be consulted at all costs.

Please observe the safety instructions listed in the relevant Safety and operating instructions!

Kits and consumables - 8381061205 - 9LD625-2	1
Kits and consumables - 8381060465 - KDI 1903 M	3
Kits and consumables - 8381061499 - D2011L03	5

## Service

4810064355_00 Service Pak 300 Hr - 8381061205 - 9LD625-2	7
4810064338_00 Service Pak 500 Hr - 8381060465 - KDI 1903 M	9
4810064337_00 Service Pak 1000 Hr - 8381061499 - D2011L03	11
4810064354_00 Seal kit	13
4810064349_00 Wear part kit	15
4810054358_00 Coupling repair kit	17

## Engine

Engine Spare Parts - 9LD625-2	19
Engine Spare Parts - KDI 1903 M	21
Engine Spare Parts - D2011L03	23

## Mechanical

4810021368_00 Set of screws	25
4810014009_00 Set of gaskets	27
4810014028_00 Set of cover	29
4810025467_00 Pump core	31
4810021257_00 Extension	33
4810021228_00 Mechanical seal assembly	35
4810021482_00 Wear plate set	37
4810009032_00 Check valve assembly	39
4810021256_00 Complete shaft assembly	41
4810008167_00 Coupling assembly	43
4810062167_00 Frame arrangement - 9LD625-2	45
4810058925_00 Frame arrangement - KDI 1903 M	47
4810062234_00 Frame arrangement - D2011L03	49
4810058923_00 Complete battery assembly	51
4810062070_00 Lifting bar assembly	53
4810056618_00 Level indicator assembly	55
4810061620_00 Complete engine assembly - KDI 1903 M	57
4810061963_00 Complete engine assembly - D2011L03 - 2.0 - RPM 2000	59

## Options / accessories

4810061913_00 Skid assembly - 01	61
4810055267_00 Lifting assembly	63
4810061916_00 Skid assembly - KDI 1903 M	65
4810061921_00 Kit stack	67
4810061904_00 Trailer assembly - D2011L03	69
4810055266_00 Foot assembly - D2011L03	71
8381060032_00 Kit mudguards - D2011L03	73
4810058936_00 Mudguard assembly - D2011L03	75
4810060655_00 Control panel - KDI 1903 M	77
4810049113_00 Control panel - D2011L03	79
4810061994_00 Grease cartridge kit	81
1805120045_00 Flange Kit - 4" DIN	83
1805120050_00 Flange Kit - 4" ANSI	85
1805120071_00 Zinc kit - VAR 4-250	87
4810066428_00 Fleetlink locator retrofit kit	89

## Kits and consumables - 8381061205 - 9LD625-2

VAR 4-250 - 9LD625-2			Change interval/quantity	
Kits/consumables	Item number	Description	300 Hr	When needed
Maintenance kit	1	Service Pak 300 Hr	1	
Engine oil Change every 500 Hr or 12 months	2 3 4	Can Paroil E 5 Liter/1.32 Gallon Can Paroil E 20 Liter/5.3 Gallon Can Paroil E 210 Liter/55.5 Gallon	3 Liter 0.79 Gallon	
Mechanical seal grease	5	Parlube (0,4 KGS)		1
Service and repair kit	6 7 8	Seal kit Wear part kit Coupling repair kit		1 1 1



Item	Part No.	Name	Qty	L
1	4810064355	Service Pak 300 Hr	1	
2	1615595300	Can Paroil E 5 Liter/1.32 Gallon	1	
3	1615595400	Can Paroil E 20 Liter/5.3 Gallon	1	
4	1615595500	Barrel Paroil E 210 Liter/55.5 Gallon	1	
5	4812030095	Parlube (0,4 KGS)	1	
6	4810064354	Seal kit	1	
7	4810064349	Wear part kit	1	
8	4810054358	Coupling repair kit	1	

## Kits and consumables - 8381060465 - KDI 1903 M

VAR 4-250 - KDI 1903 M			Change interval/quantity	
Kits/consumables	Item number	Description	500 Hr	When needed
Maintenance kit	1	Service Pak 500 Hr	1	
Engine oil/Seal oil Change every 500 Hr or 12 months	2	Can Paroil E 5 Liter/1.32 Gallon	8.7/1.5 Liter 2.29/0.39 Gallon	
	3	Can Paroil E 20 Liter/5.3 Gallon		
	4	Can Paroil E 210 Liter/55.5 Gallon		
Engine coolant	5	Parcool EG 5 Liter/1.32 Gallon		6.8 Liter 1.79 Gallon
	6	Parcool EG 20 Liter/5.3 Gallon		
	7	Parcool EG 210 Liter/55.5 Gallon		
Mechanical seal grease	8	Parlube (0,4 KGS)		1
Service and repair kit	9	Seal kit		1
	10	Wear part kit		1
	11	Coupling repair kit		1

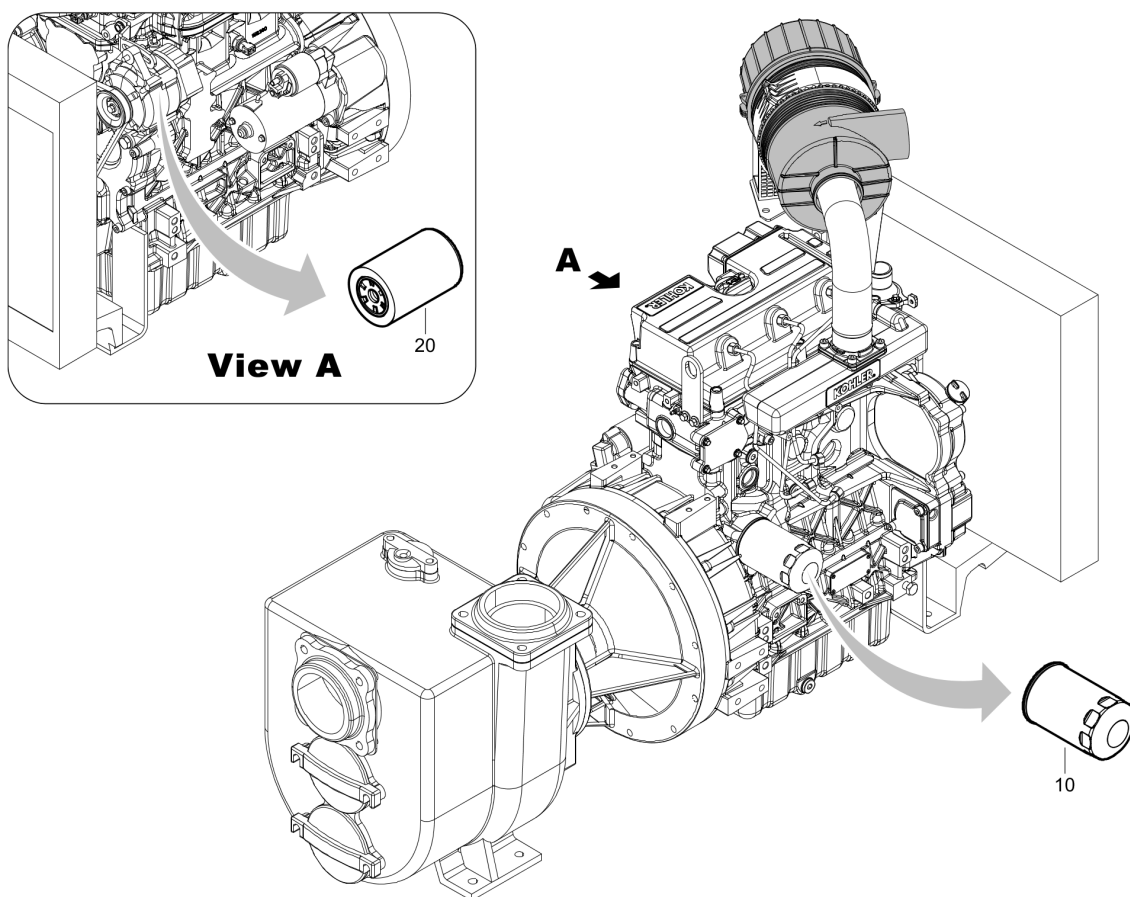
Item	Part No.	Name	Qty	L
1	4810064338	Service Pak 500 Hr	1	
2	1615595300	Can Paroil E 5 Liter/1.32 Gallon	1	
3	1615595400	Can Paroil E 20 Liter/5.3 Gallon	1	
4	1615595500	Barrel Paroil E 210 Liter/55.5 Gallon	1	
5	1604530801	Can Parcool EG 5 Liter/1.32 Gallon	1	
6	1604530702	Can Parcool EG 20 Liter/5.3 Gallon	1	
7	1604530601	Barrel Parcool EG 210 Liter/55.5 Gallon	1	
8	4812030095	Parlube (0,4 KGS)	1	
9	4810064354	Seal kit	1	
10	4810064349	Wear part kit	1	
11	4810054358	Coupling repair kit	1	

## Kits and consumables - 8381061499 - D2011L03

VAR 4-250 - D2011L03			Change interval/quantity		
Kits/consumables	Item number	Description	500 Hr	1000 Hr	When needed
Maintenance kit	1	Service Pak 1000 Hr		1	
Engine oil Change every 500 Hr or 12 months	2	Can Paroil E 5 Liter/1.32 Gallon	5.6 Liter 1.47 Gallon		
	3	Can Paroil E 20 Liter/5.3 Gallon			
	4	Can Paroil E 210 Liter/55.5 Gallon			
Mechanical seal grease	5	Parlube (0,4 KGS)			1
Service and repair kit	6	Seal kit			1
	7	Wear part kit			1
	8	Coupling repair kit			1

Item	Part No.	Name	Qty	L
1	4810064337	Service Pak 1000 Hours	1	
2	1615595300	Can Paroil E 5 Liter/1.32 Gallon	1	
3	1615595400	Can Paroil E 20 Liter/5.3 Gallon	1	
4	1615595500	Barrel Paroil E 210 Liter/55.5 Gallon	1	
5	4812030095	Parlube (0,4 KGS)	1	
6	4810064354	Seal kit	1	
7	4810064349	Wear part kit	1	
8	4810054358	Coupling repair kit	1	

**Service** 4810064355\_00 Service Pak 300 Hr - 8381061205 - 9LD625-2

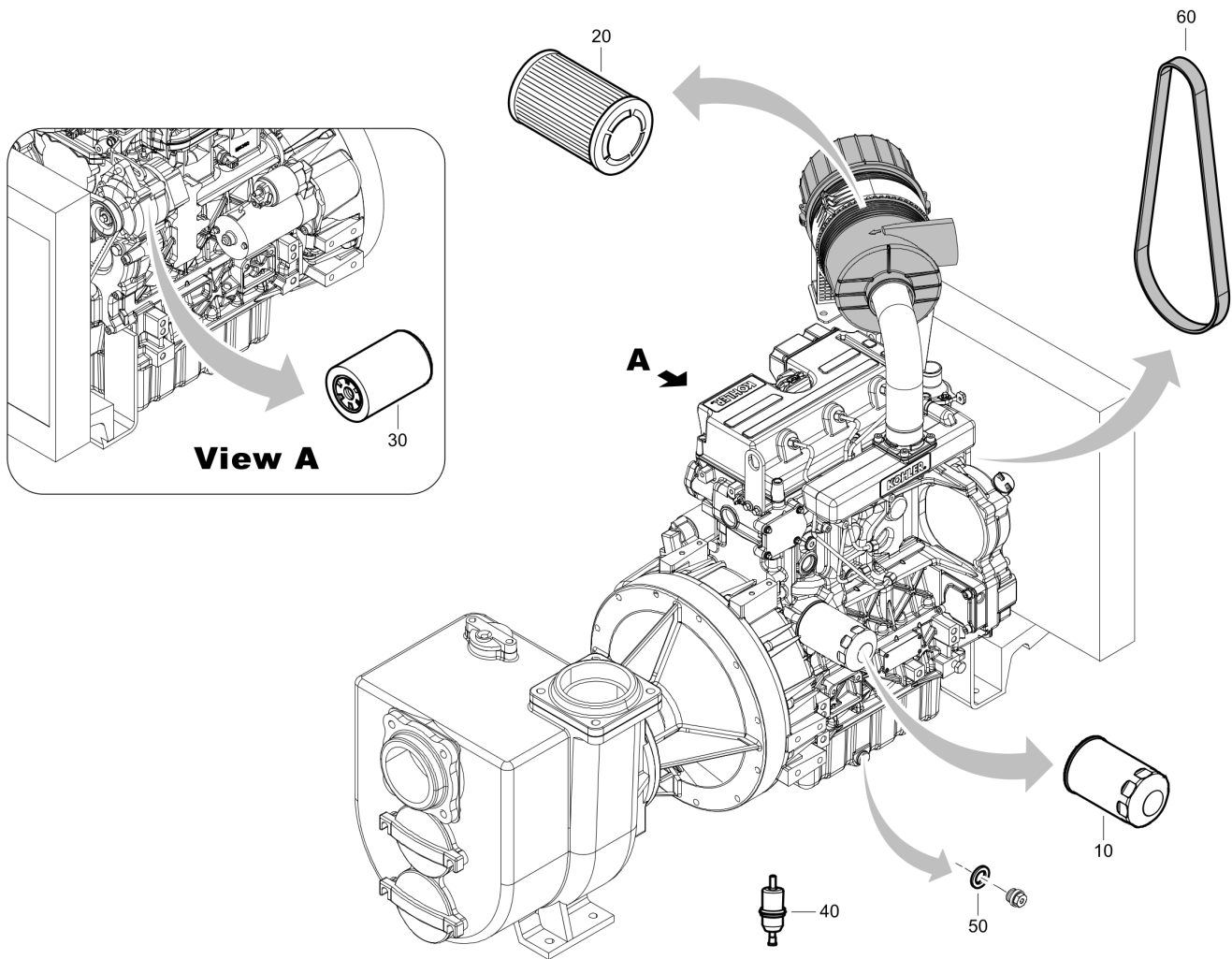


Refer to Parts Online for the most up to date information. The printed information might be outdated.

Tue May 12 11:30:13 UTC 2020

Item	Part No.	Name	Qty	L
-	4810064355	Service Pak 300 Hr	1	
10	-	Oil filter cartridge	1	
20	-	Oil filter	1	

**Service** 4810064338\_00 Service Pak 500 Hr - 8381060465 - KDI 1903 M



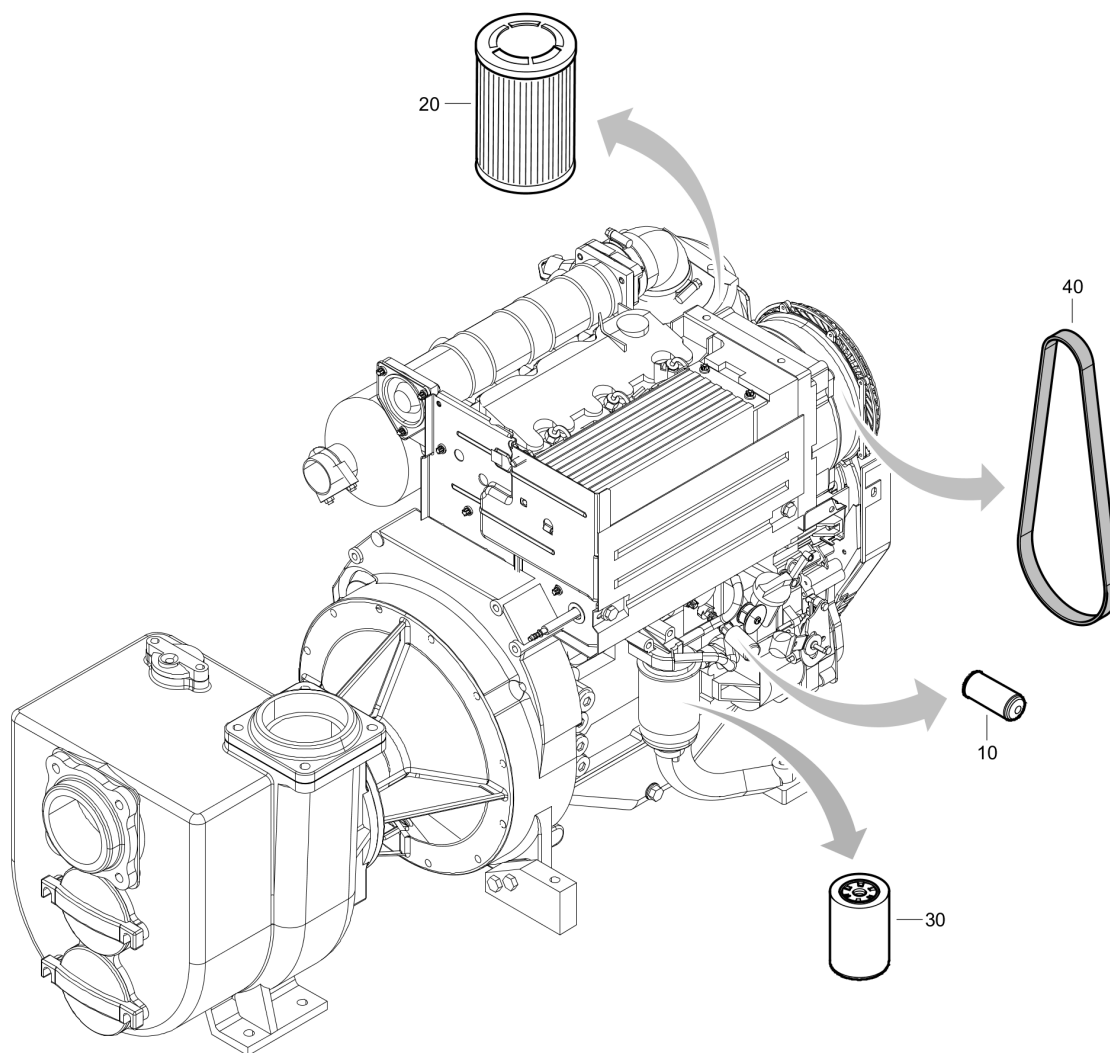
Refer to Parts Online for the most up to date information. The printed information might be outdated.

Tue May 12 11:30:14 UTC 2020



Item	Part No.	Name	Qty	L
-	4810064338	Service Pak 500 Hr	1	
10	-	Air filter	1	
20	-	Belt	1	
30	-	Oil filter	1	
40	-	Fuel pre-filter	1	
50	-	Oil drain washer	1	
60	-	Belt	1	

**Service** 4810064337\_00 Service Pak 1000 Hr - 8381061499 - D2011L03

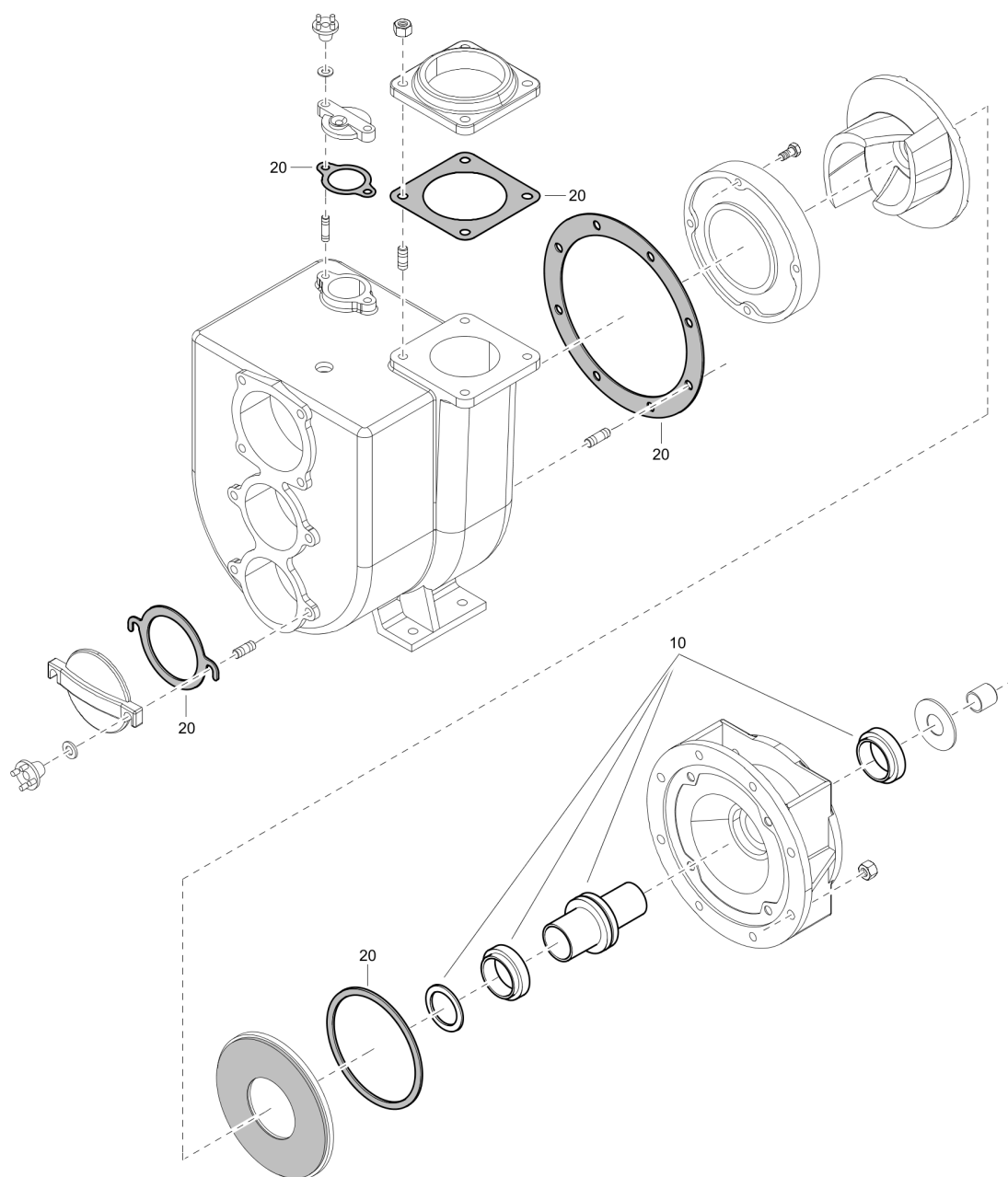


Refer to Parts Online for the most up to date information. The printed information might be outdated.

Tue May 12 11:30:15 UTC 2020

Item	Part No.	Name	Qty	L
-	4810064337	Service Pak 1000 Hours	1	
10	-	Air filter	1	
20	-	Belt	1	
30	-	Oil filter	1	
40	-	Narrow v-belt	1	

**Service** 4810064354\_00 Seal kit

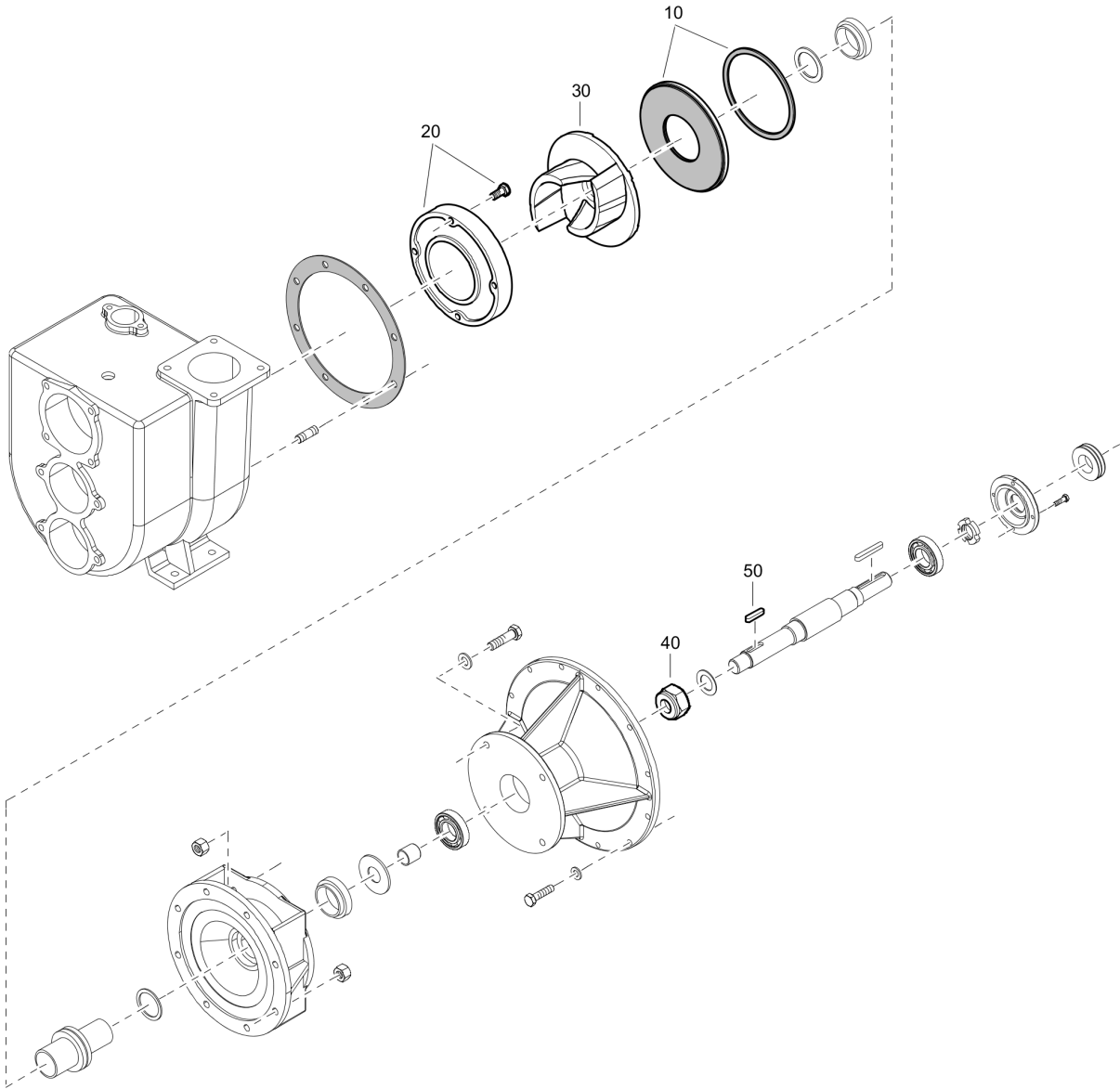


Refer to Parts Online for the most up to date information. The printed information might be outdated.

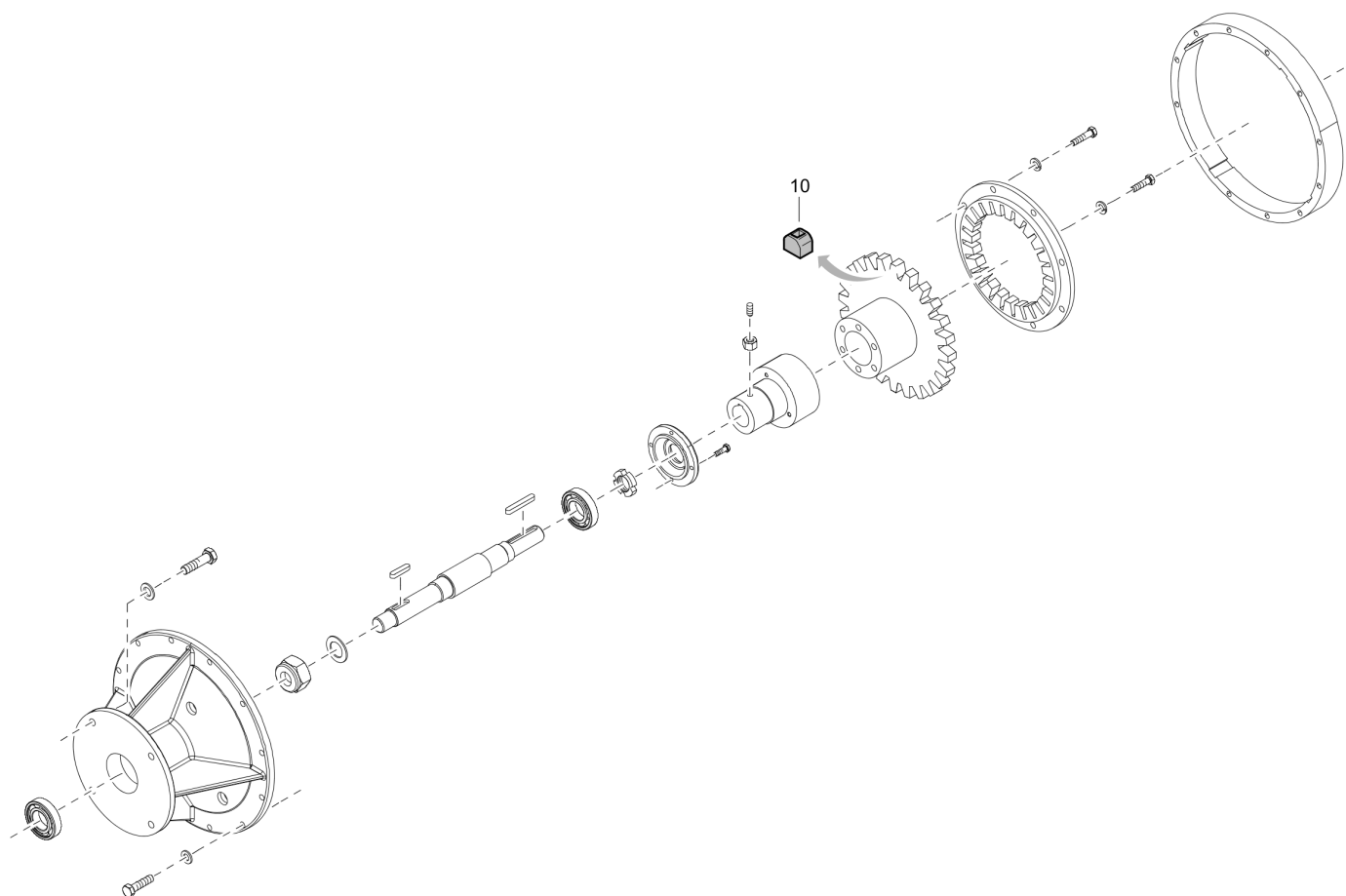
Tue May 12 11:30:16 UTC 2020

Item	Part No.	Name	Qty	L
-	4810064354	Seal kit	1	
10	4810021228	Mechanical seal assembly	1	
20	4810014009	Set of gaskets	1	

**Service** 4810064349\_00 Wear part kit



Item	Part No.	Name	Qty	L
-	4810064349	Wear part kit	1	
10	4810023925	Wear plate set	1	
20	4810008442	Wear plate set	1	
30	4810005365	Impeller	1	
40	4810001466	Nut	1	
50	4810001626	Key	1	

**Service** 4810054358\_00 Coupling repair kit

Refer to Parts Online for the most up to date information. The printed information might be outdated.

Tue May 12 11:30:18 UTC 2020

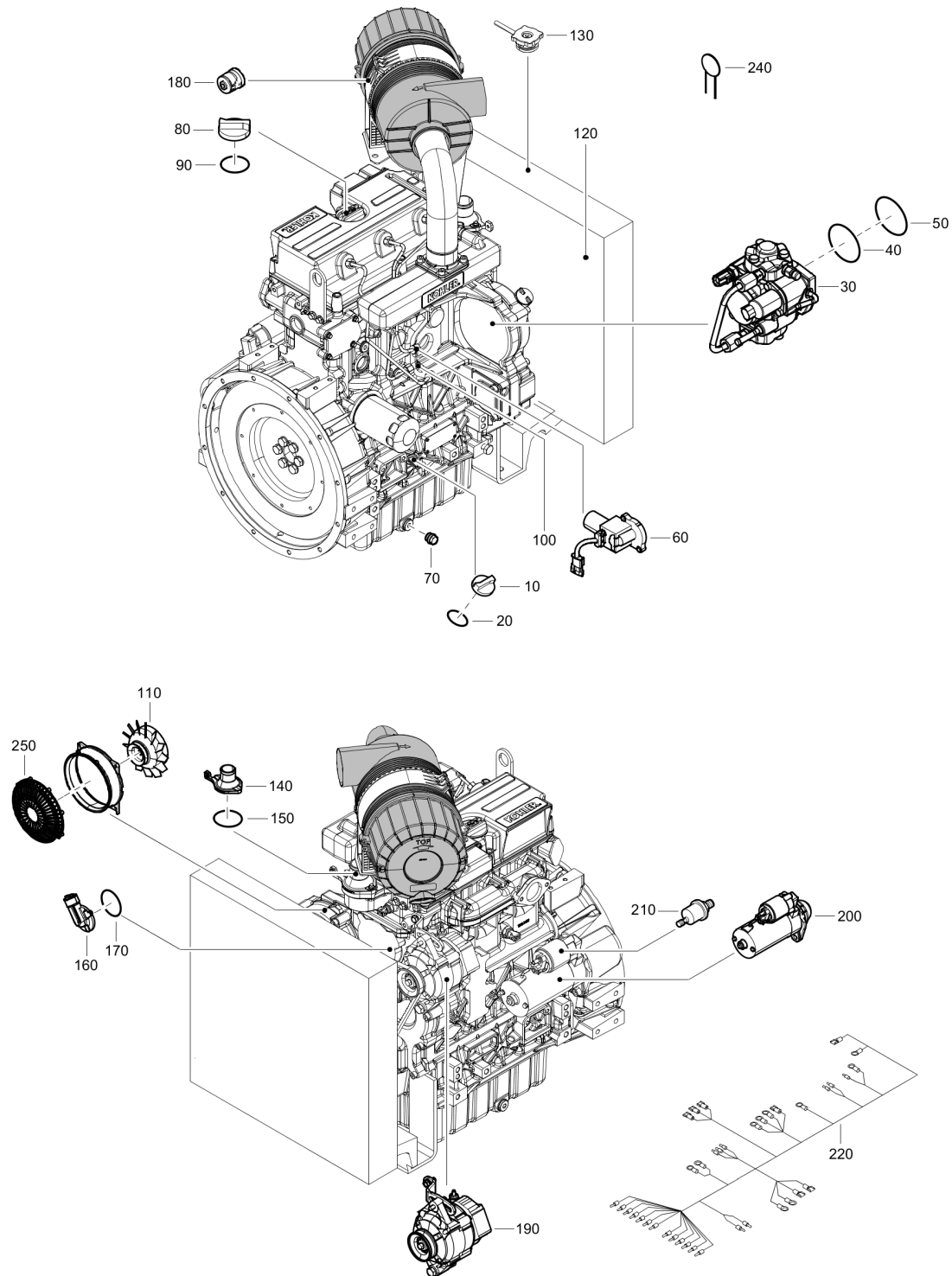


Item	Part No.	Name	Qty	L
10	4810054358	Coupling repair kit	1	

**Engine** Engine Spare Parts - 9LD625-2

NO EXPLODED VIEW  
AVAILABLE  
FOR THIS BOM

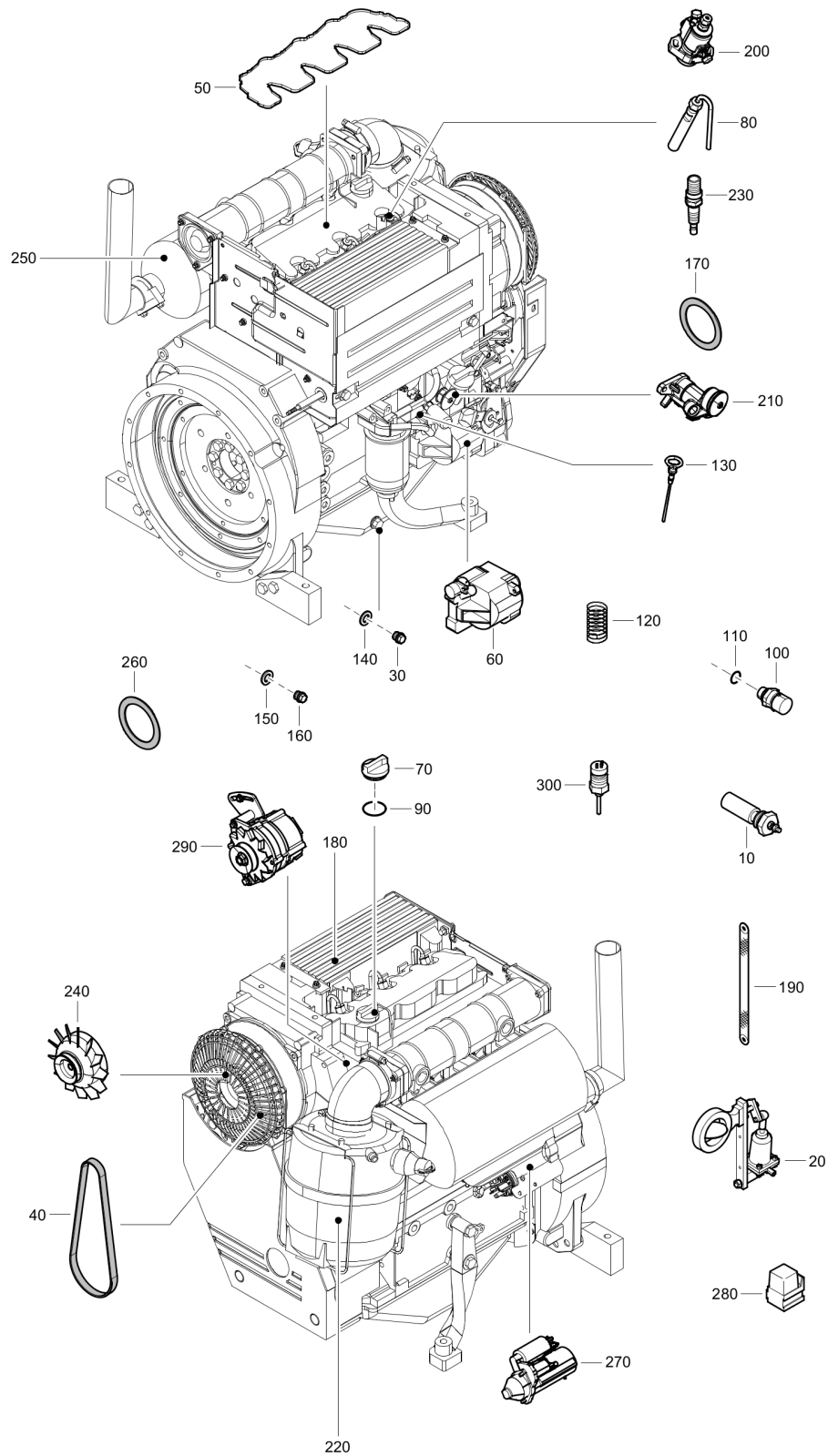
Item	Part No.	Name	Qty	L
10	4810063432	Cover	1	
20	4810063433	Cover	1	
30	4810063434	Gasket	1	
40	4810063435	Oil refilling cap	1	
50	4810060600	Oil cap o-ring	1	
60	4810063436	Fuel injection nozzle kit	1	
70	4810063437	Fuel injection pump kit	1	
80	4810063438	Oil pump	1	
90	4810063439	Oil drain plug	1	
100	4810063441	Complete oil dipstick	1	
110	4810063443	Fuel feed pump	1	
120	4810063444	Fuel feed pump gasket	1	
130	4810063445	Cooling fan	1	
140	4810063446	Air cleaner kit	1	
150	4810063447	Muffler	1	
160	4810063448	Muffler gasket	2	
170	4810063449	Alternator	1	
180	4810063450	Starter motor	1	
190	4810063451	Oil pressure switch	1	
200	4810063452	Wire harness	1	
210	4810063453	Oil temperature switch	1	
220	4810063454	Fan protection	1	

**Engine** Engine Spare Parts - KDI 1903 M

Refer to Parts Online for the most up to date information. The printed information might be outdated.

Tue May 12 11:30:20 UTC 2020

Item	Part No.	Name	Qty	L
10	4810060669	Oil cap	1	
20	4810060600	Oil cap o-ring	1	
30	4810060629	Injector assembly	3	
40	4810060602	Injector gasket	3	
50	4810060626	Injectors gasket	3	
60	4810060643	Injection pump	1	
70	4810060670	Oil sump plug	1	
80	4810060668	Oil filling cap	1	
90	4810060601	Oil filling gasket	1	
100	4810063599	Fuel feeding pump	1	
110	4810060677	Fan	1	
120	4810060656	Radiator	1	
130	4810060667	Cap radiator	1	
140	4810060672	Thermostatic valve assembly	1	
150	4810060622	Thermostatic valve gasket	1	
160	4810060636	Water pump assembly	1	
170	4810060625	Water pump gasket	1	
180	4810060664	Air filter indicator	1	
190	4810060599	Alternator	1	
200	4810060634	Starter motor	1	
210	4810060648	Oil pressure switch	1	
220	4810060614	Wire harness	1	
240	4810060673	Thermistor	1	
250	4810060651	Fan protection	1	

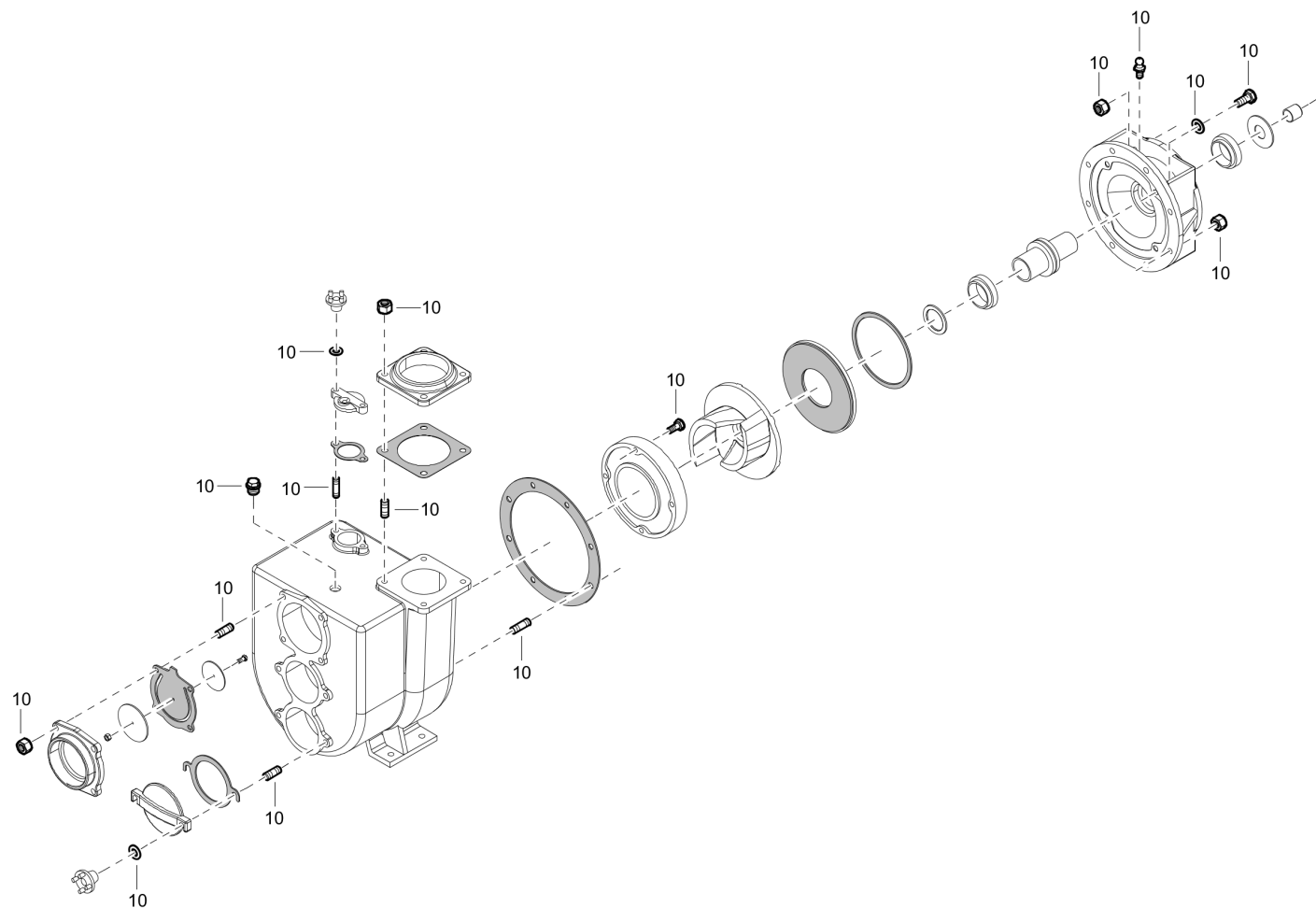
**Engine** Engine Spare Parts - D2011L03

Refer to Parts Online for the most up to date information. The printed information might be outdated.

Tue May 12 11:30:22 UTC 2020

Item	Part No.	Name	Qty	L
10	1310031376	Heater plug	3	
20	1636302396	Shutdown valve	1	
30	2913101300	Screw plug	1	
40	2913105300	Alternator belt	1	
50	2913107700	Seal	1	
60	2913140800	Oil pump	1	
70	2913142300	Filler cap	1	
80	2913144900	Fuel injector	1	
90	2913189900	Gasket set	1	
100	2913212600	Oil pressure switch	1	
110	2914738000	Supplement gasket set	1	
120	4810063290	Compression spring	1	
130	4810063303	Dipstick	1	
140	4810063271	Sealing ring	1	
150	4810063269	Sealing ring	1	
160	4810063270	Screw plug	1	
170	4810063292	Gasket	1	
180	4810063302	Oil cooler	1	
190	4810063291	Sealing strip	1	
200	4810063304	Fuel injector pump	1	
210	4810063287	Fuel supply pump	1	
220	4810063305	Air cleaner assembly	1	
230	4810063283	Dust enjector	1	
240	4810063289	Fan	1	
250	4810063294	Exhaust silencer	1	
260	4810063288	Gasket	1	
270	4810063278	Starter	1	
280	4810063282	Relay	1	
290	4810063276	Generator	1	
300	4810063295	Temperature transmitter	1	

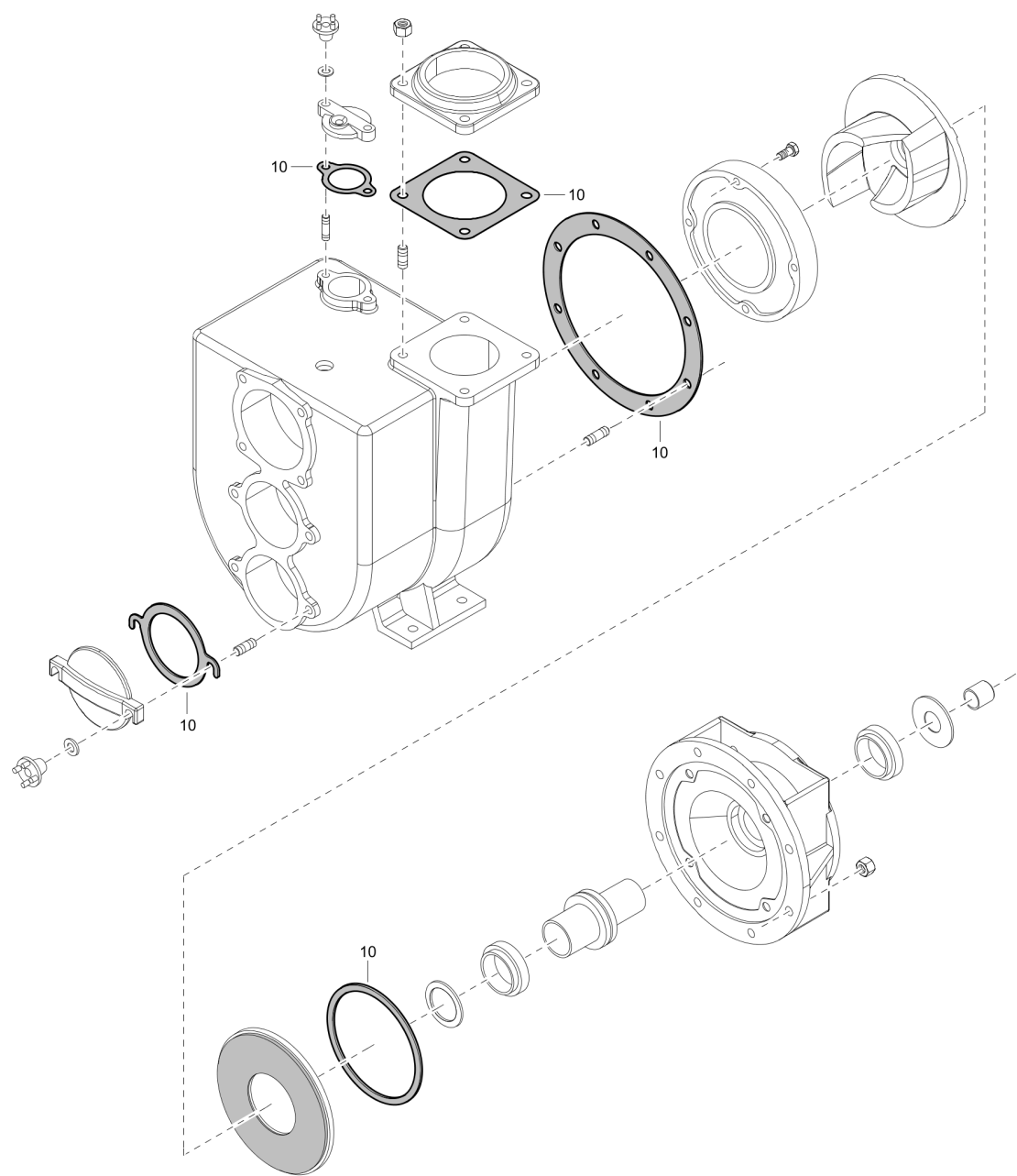
**Mechanical** 4810021368\_00 Set of screws





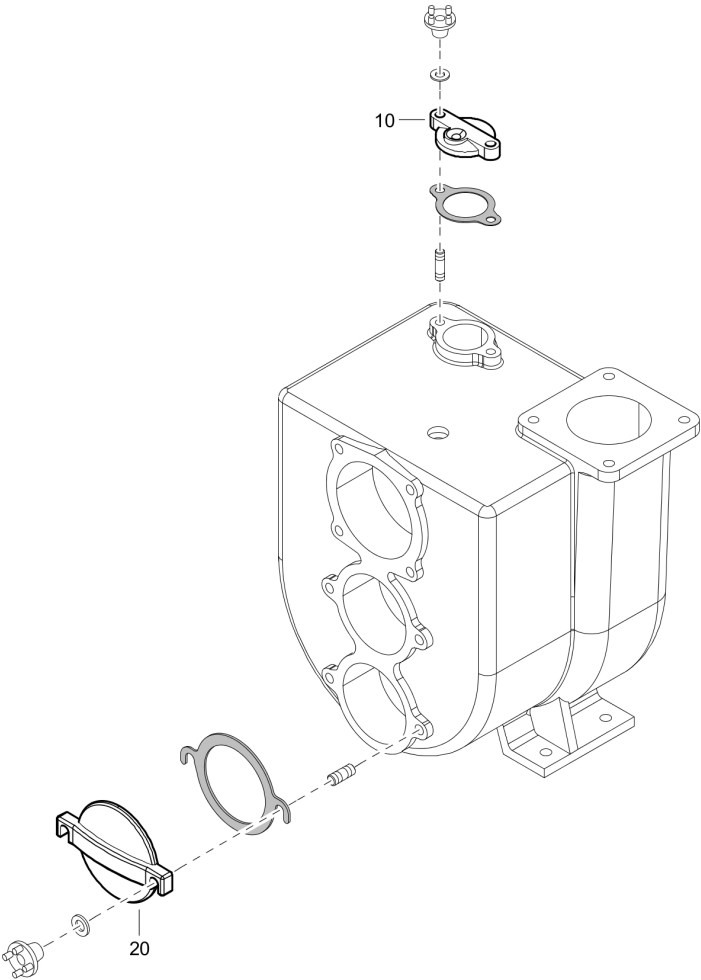
Item	Part No.	Name	Qty	L
10	4810021368	Set of screws	1	
-	4810001422	Nut	20	
-	4810001421	Nut	2	
-	4810001824	Stud	2	
-	4810001827	Stud	8	
-	4810001835	Stud	12	
-	4810001909	Screw	4	
-	4810002379	Plug	1	
-	4810001959	Screw	4	
-	4810001699	Washer	8	
-	4810001662	Grease nipple	1	
-	4810001691	Washer	2	

**Mechanical** 4810014009\_00 Set of gaskets



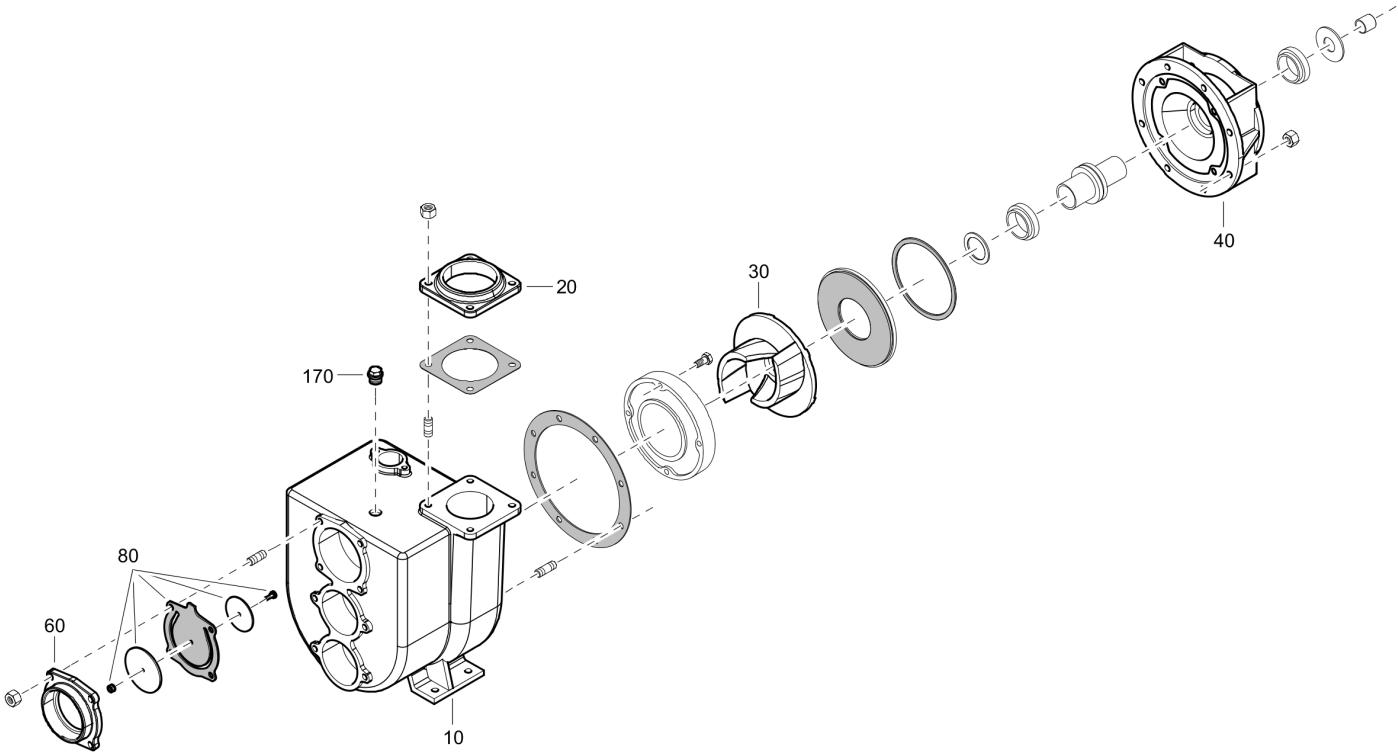
Item	Part No.	Name	Qty	L
10	4810014009	Set of gaskets	1	
-	4810005553	Casing gasket	1	
-	4810005589	Flange gasket	1	
-	4810005610	Wear plate gasket	1	
-	4810005707	Cover gasket	1	
-	4810005712	Cover gasket	2	
-	4810005567	Casing gasket	1	

**Mechanical** 4810014028\_00 Set of cover



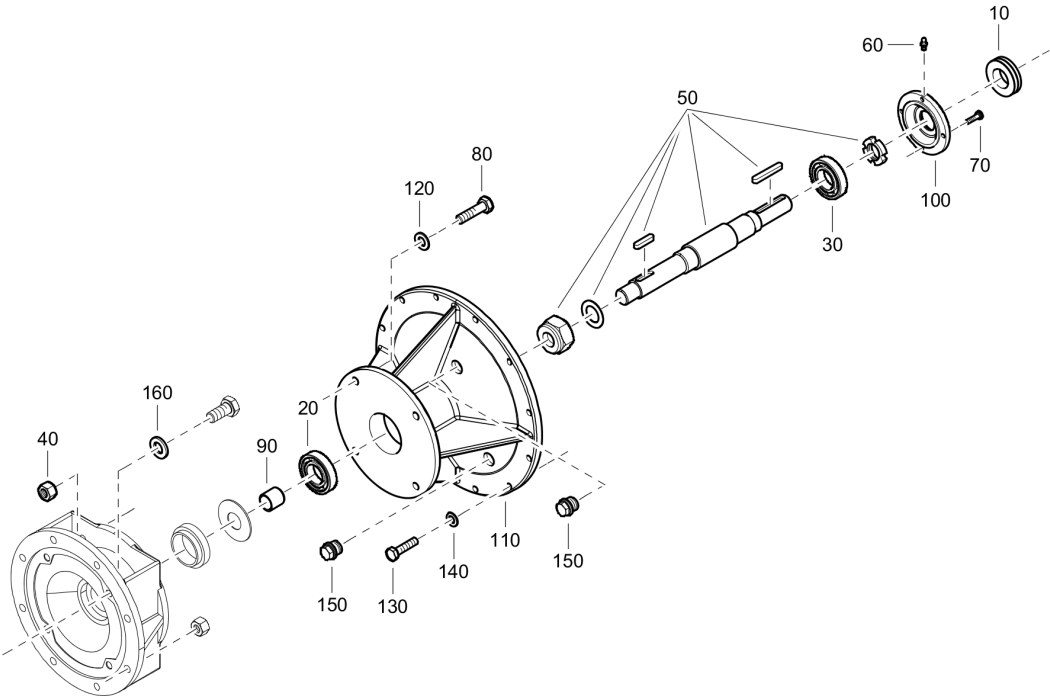
Item	Part No.	Name	Qty	L
10	4810006473	Cover	1	
20	4810006475	Cover	2	

**Mechanical** 4810025467\_00 Pump core



Item	Part No.	Name	Qty	L
10	4810021369	Casing	1	
20	4810005094	Flange	1	
30	4810005365	Impeller	1	
40	4810025301	Head	1	
60	4810006426	Suction flange	1	
80	4810009032	Check valve assembly	1	
170	4810002379	Plug	1	

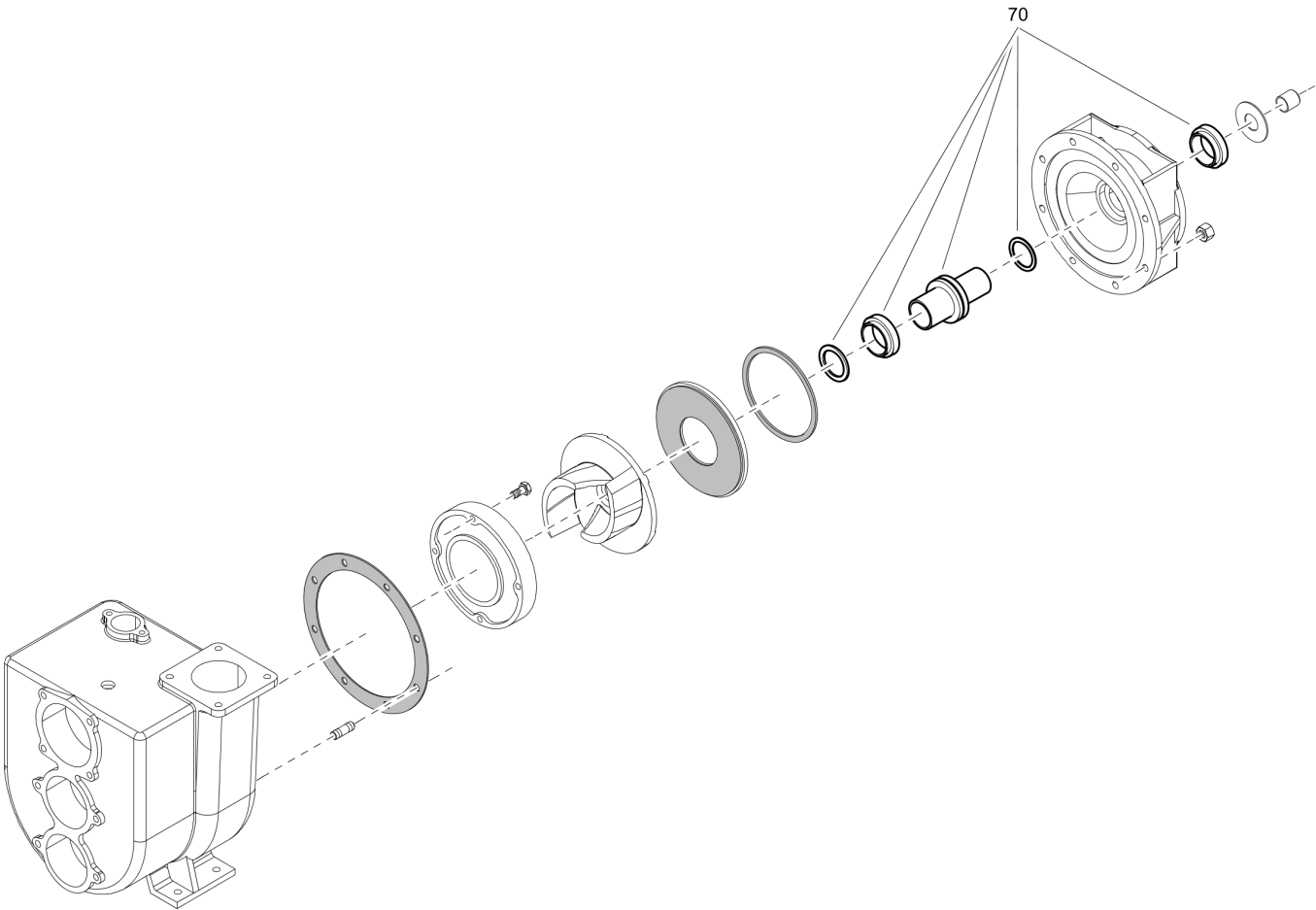
**Mechanical** 4810021257\_00 Extension



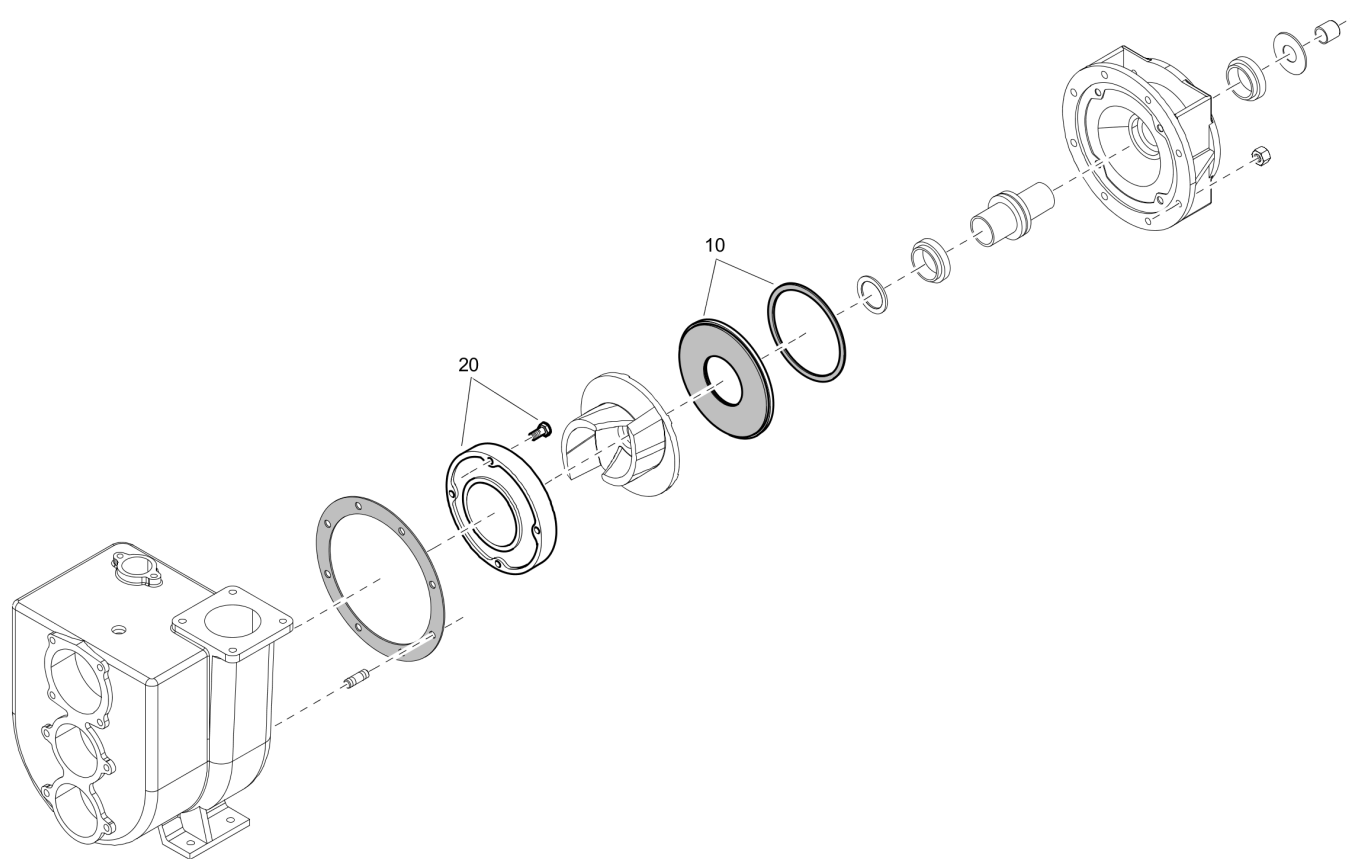


Item	Part No.	Name	Qty	L
10	4810001294	Ring	1	
20	4810052878	Ball bearing	1	
30	4810054292	Ball bearing	1	
40	4810001422	Nut	4	
50	4810021256	Shaft	1	
60	4810001665	Grease nipple	1	
70	4810001933	Screw	4	
80	4810001964	Screw	4	
90	4810021222	Lock ring	1	
100	4810004775	Bearing cover	1	
110	4810021255	Support	1	
120	4810001681	Washer	4	
130	4810001950	Screw	12	
140	4810001680	Washer	12	
150	4810054114	Plug	2	
160	4810001699	Washer	8	

**Mechanical** 4810021228\_00 Mechanical seal assembly



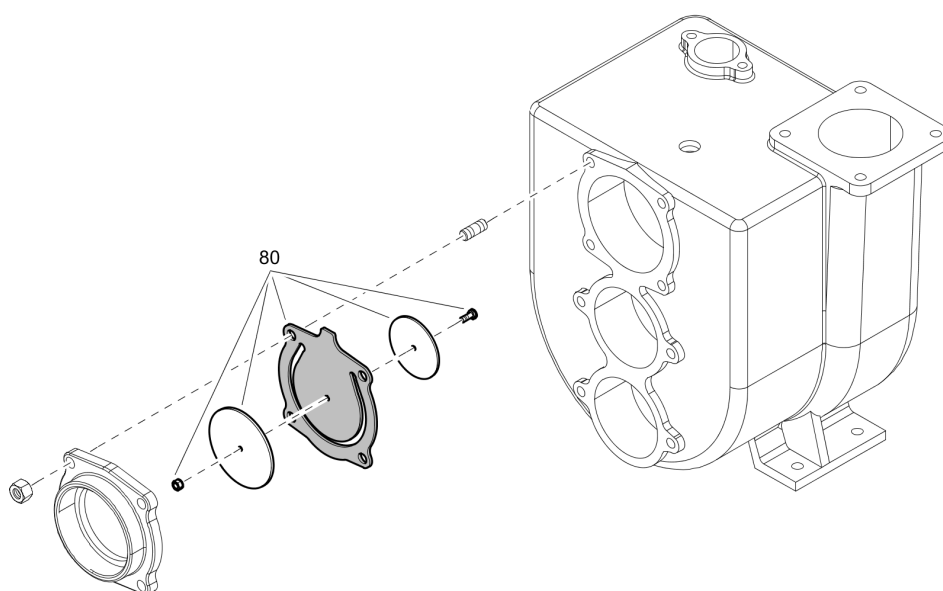
Item	Part No.	Name	Qty	L
70	4810021228	Mechanical seal assembly	1	

**Mechanical** 4810021482\_00 Wear plate set

Refer to Parts Online for the most up to date information. The printed information might be outdated.

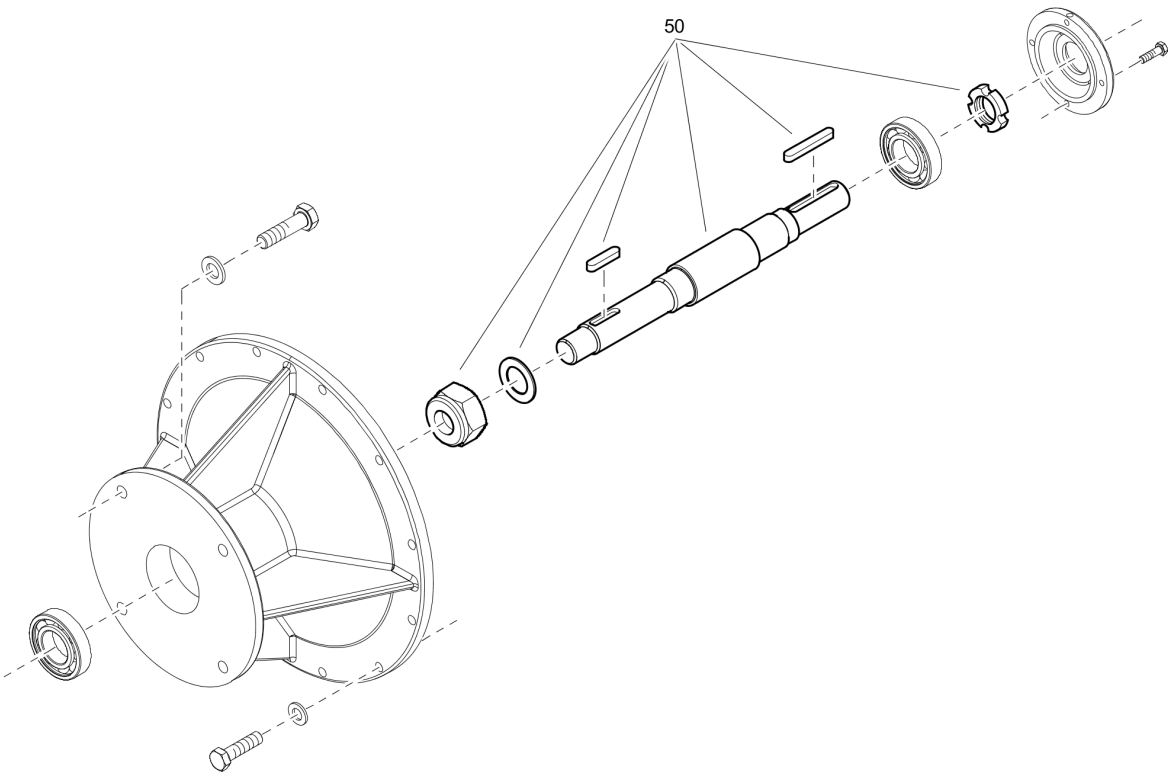
Tue May 12 11:30:29 UTC 2020

Item	Part No.	Name	Qty	L
10	4810023925	Wear plate set	1	
20	4810008442	Wear plate set	1	

**Mechanical** 4810009032\_00 Check valve assembly

Item	Part No.	Name	Qty	L
80	4810009032	Check valve assembly	1	

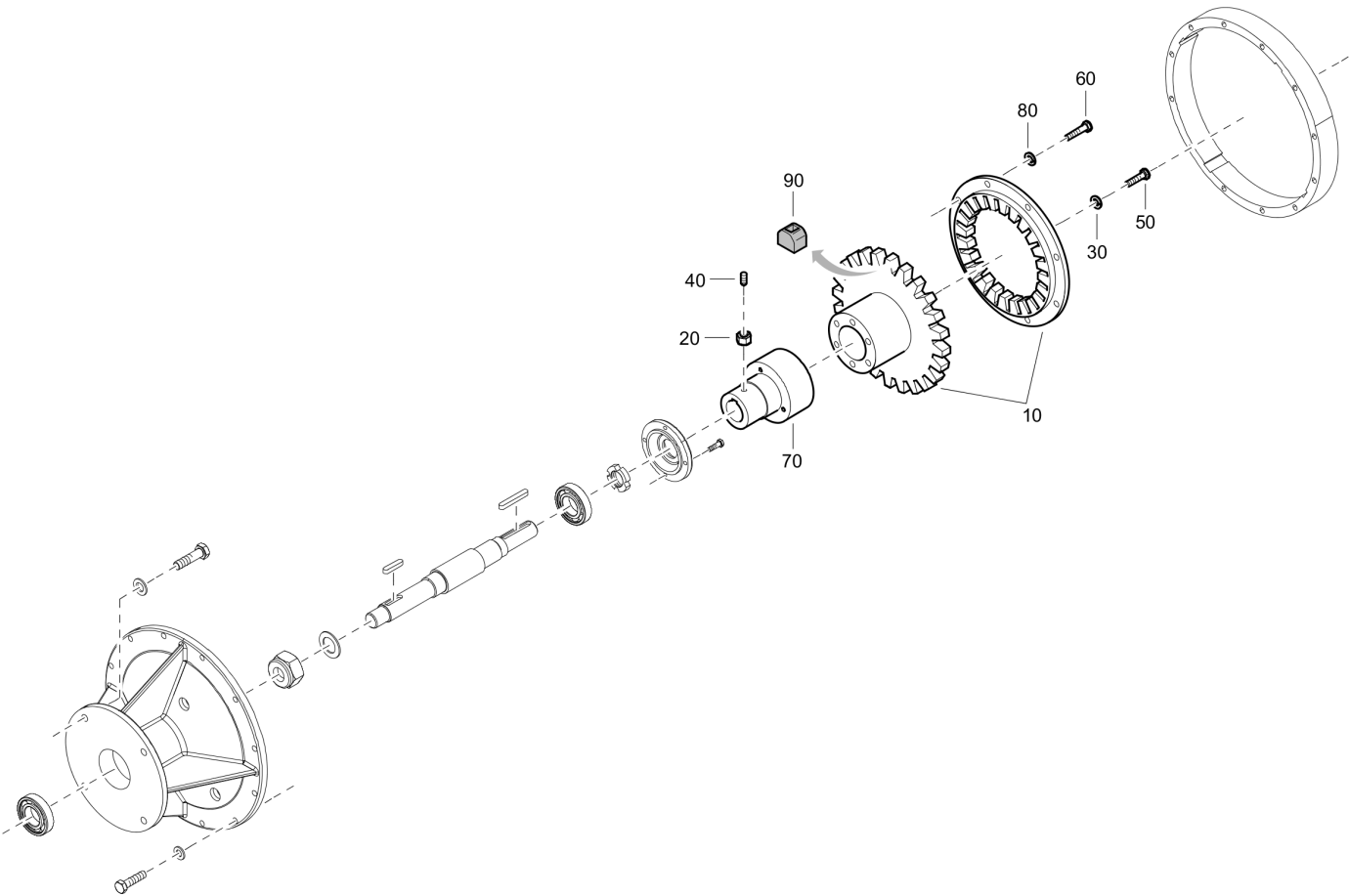
**Mechanical** 4810021256\_00 Complete shaft assembly



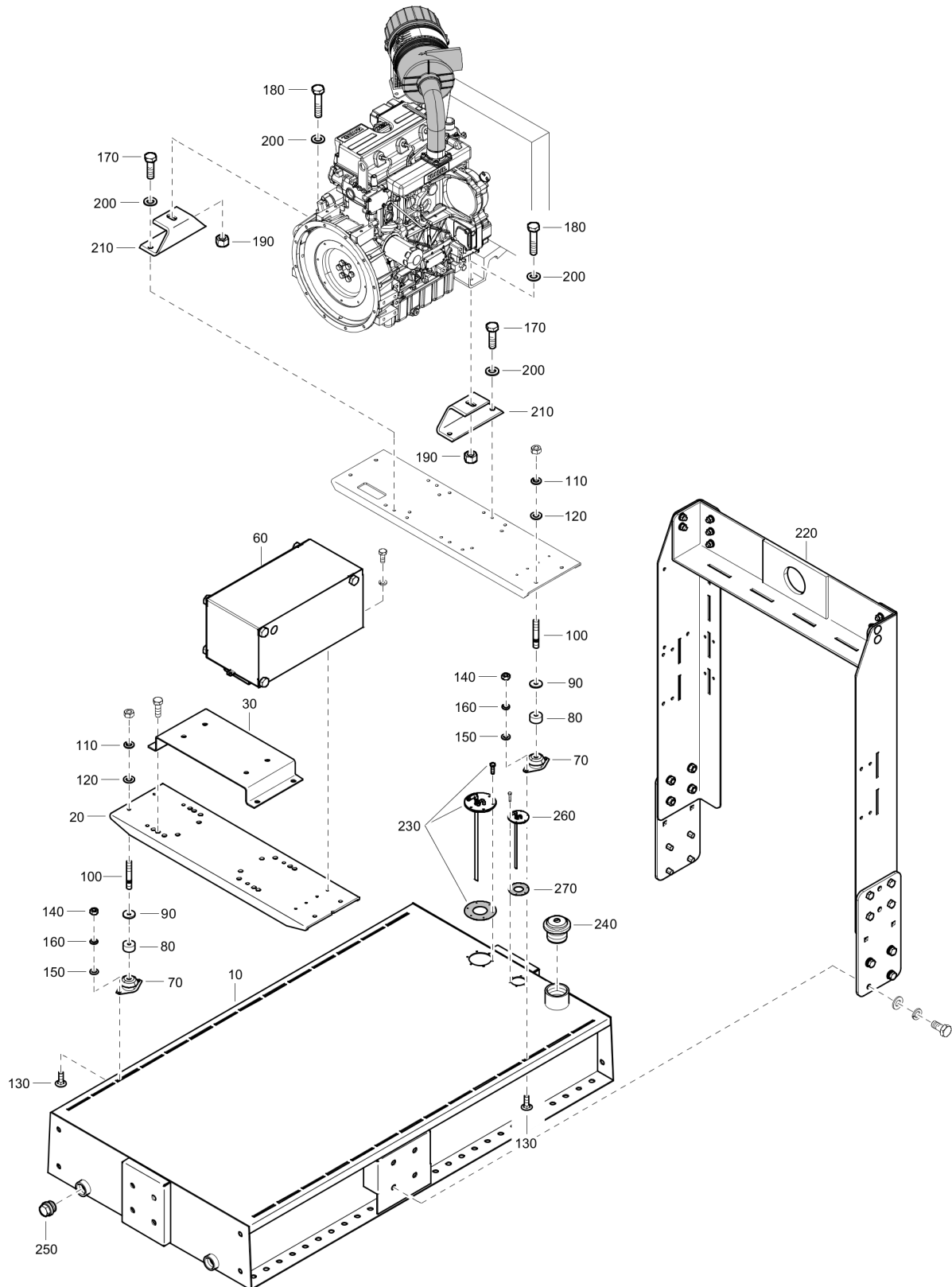


Item	Part No.	Name	Qty	L
50	4810021256	Shaft	1	

**Mechanical** 4810008167\_00 Coupling assembly



Item	Part No.	Name	Qty	L
10	4810000400	Coupling	1	
20	4810001454	Nut	12	
30	4810001680	Washer	8	
40	4810001873	Screw	2	
50	4810001949	Screw	8	
60	4810001951	Screw	8	
70	4810005821	Pulley hub	1	
80	4810001691	Washer	16	
90	4810054358	Coupling repair kit	1	

**Mechanical** 4810062167\_00 Frame arrangement - 9LD625-2

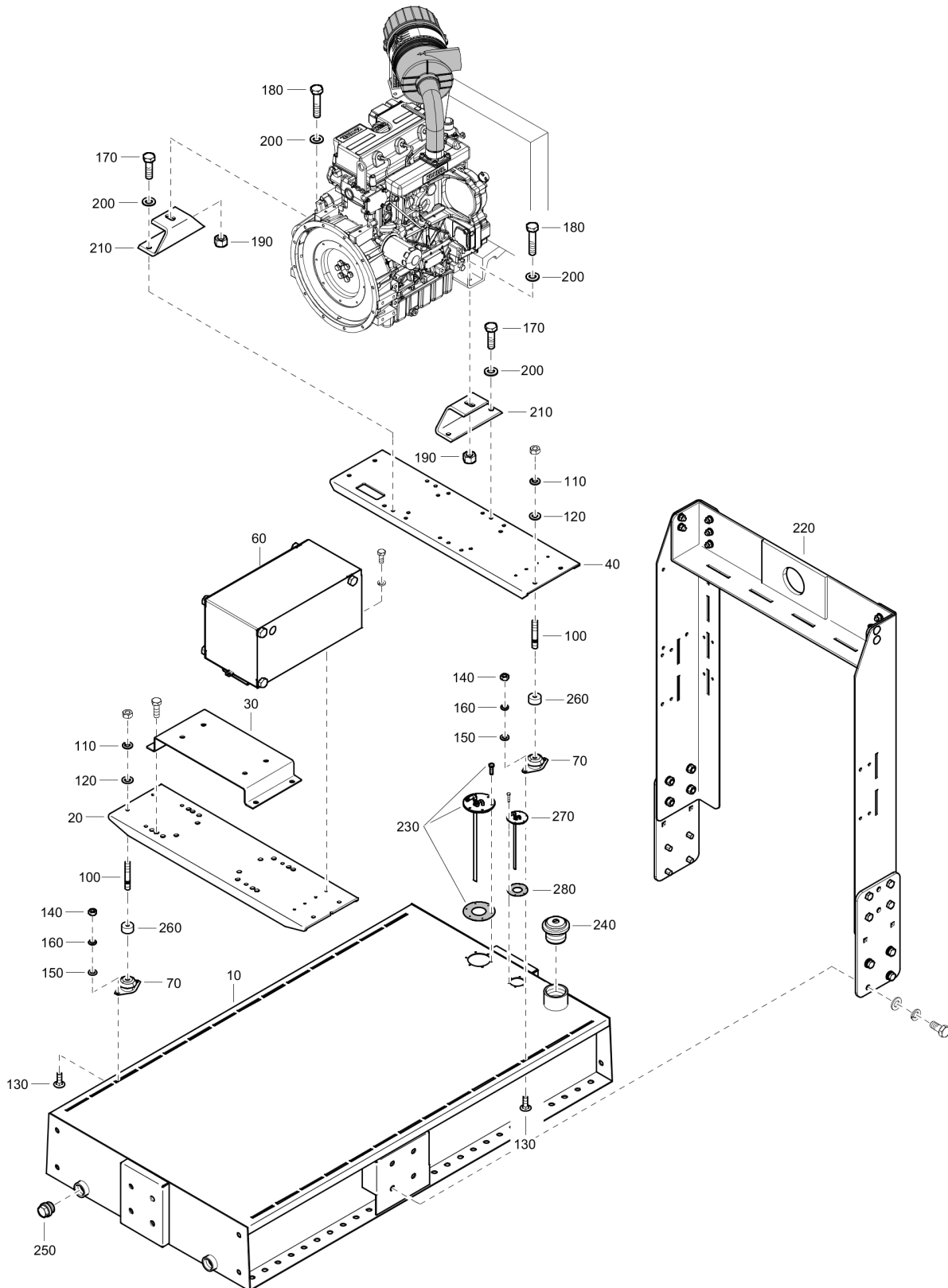
Refer to Parts Online for the most up to date information. The printed information might be outdated.

Tue May 12 11:30:32 UTC 2020

Item	Part No.	Name	Qty	L
10	4810058919	Tank	1	
20	4810058920	Support	1	
30	4810058921	Support	1	
60	-	Complete battery assembly	1	
70	4810049950	Antivibration pad	8	
80	4810047138	Spacer	4	
90	4810042844	Spacer	4	
100	4810001826	Stud	8	
110	4810001680	Washer	8	
120	4810001705	Washer	8	
130	4810036239	Screw	16	
140	4810001420	Nut	16	
150	4810001689	Washer	16	
160	4810001679	Washer	16	
170	4810001961	Screw	6	
180	4810001964	Screw	6	
190	4810001422	Nut	6	
200	4810039995	Washer	6	
210	4810058557	Engine support	2	
220	-	Lifting bar assembly	1	
230	-	Level indicator assembly	1	
240	4810057099	Secured cap	1	
250	4810002383	Plug	2	
260	4810065466	Fuel in/out	1	
270	-	Hex. head screw	1	

Refer to Parts Online for the most up to date information. The printed information might be outdated.

Tue May 12 11:30:32 UTC 2020

**Mechanical** 4810058925\_00 Frame arrangement - KDI 1903 M

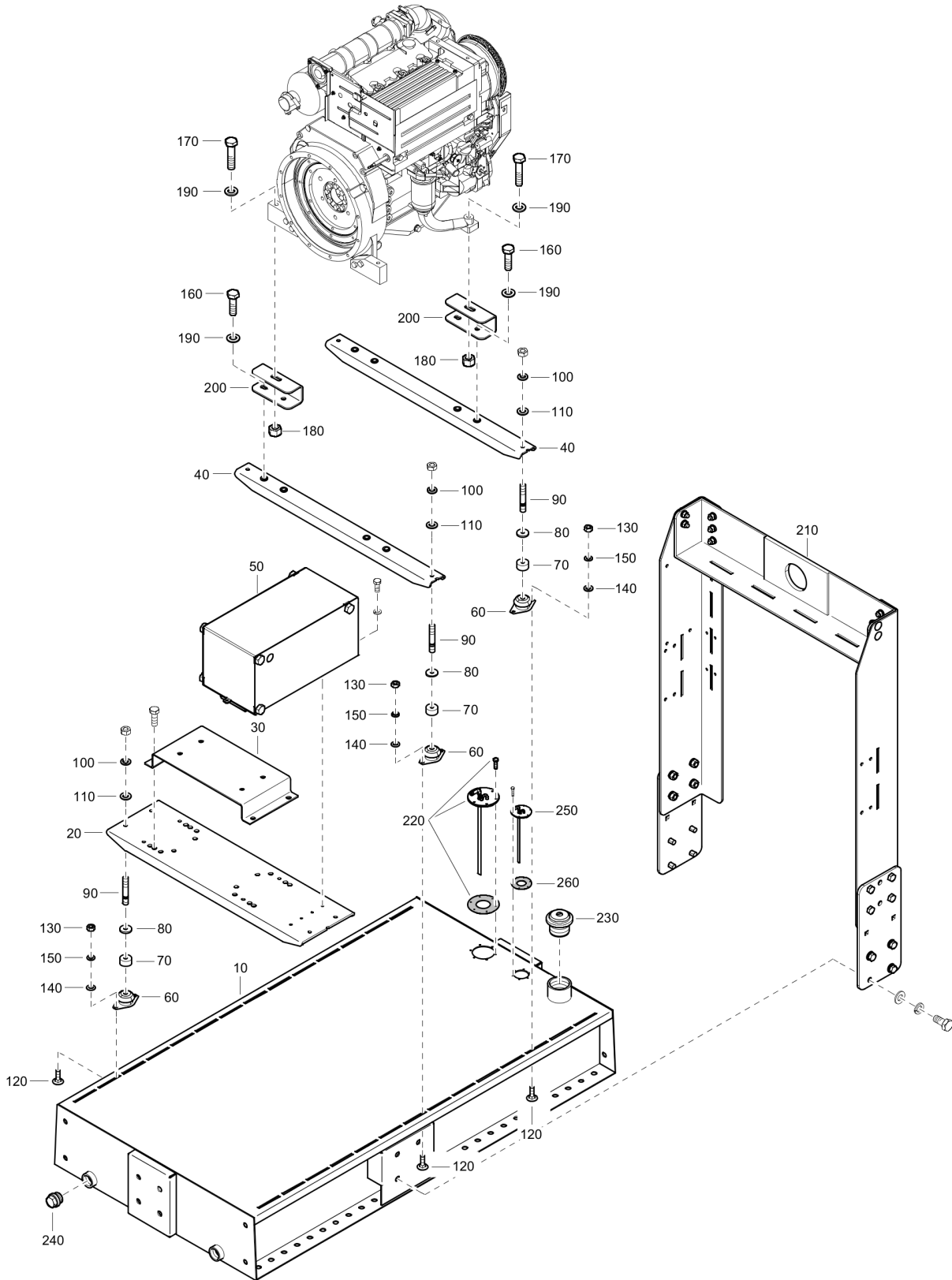
Refer to Parts Online for the most up to date information. The printed information might be outdated.

Tue May 12 11:30:33 UTC 2020

Item	Part No.	Name	Qty	L
10	4810058919	Tank	1	
20	4810058920	Support	1	
30	4810058921	Support	1	
40	4810058922	Support	1	
60	-	Complete battery assembly	1	
70	4810049950	Antivibration pad	8	
100	4810001826	Stud	8	
110	4810001680	Washer	8	
120	4810001705	Washer	8	
130	4810036239	Screw	16	
140	4810001420	Nut	16	
150	4810001689	Washer	16	
160	4810001679	Washer	16	
170	4810001961	Screw	6	
180	4810001964	Screw	6	
190	4810001422	Nut	6	
200	4810039995	Washer	6	
210	4810058557	Engine support	2	
220	-	Lifting bar assembly	1	
230	-	Level indicator assembly	1	
240	4810057099	Secured cap	1	
250	4810002383	Plug	2	
260	4810045558	Spacer	4	
270	4810065466	Fuel in/out	1	
280	-	Hex. head screw	1	

Refer to Parts Online for the most up to date information. The printed information might be outdated.

Tue May 12 11:30:33 UTC 2020

**Mechanical** 4810062234\_00 Frame arrangement - D2011L03

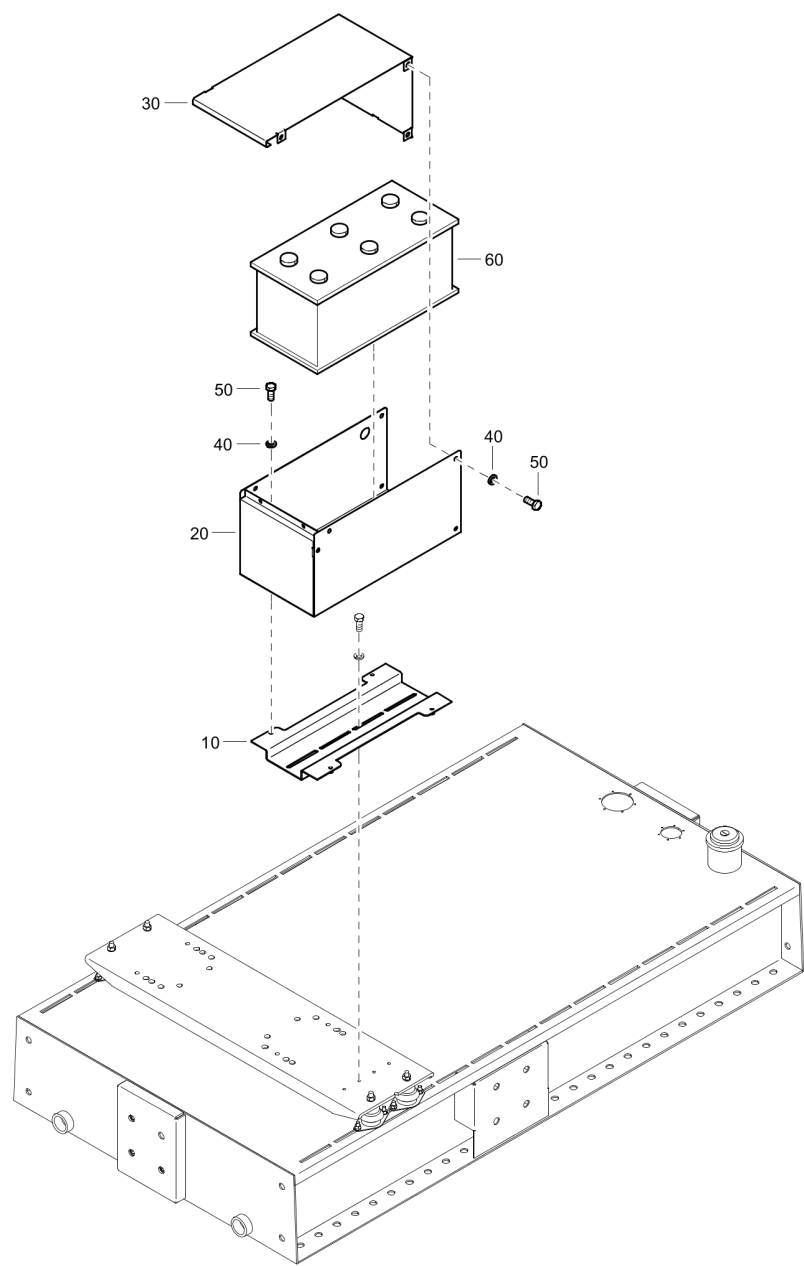
Refer to Parts Online for the most up to date information. The printed information might be outdated.

Tue May 12 11:30:34 UTC 2020



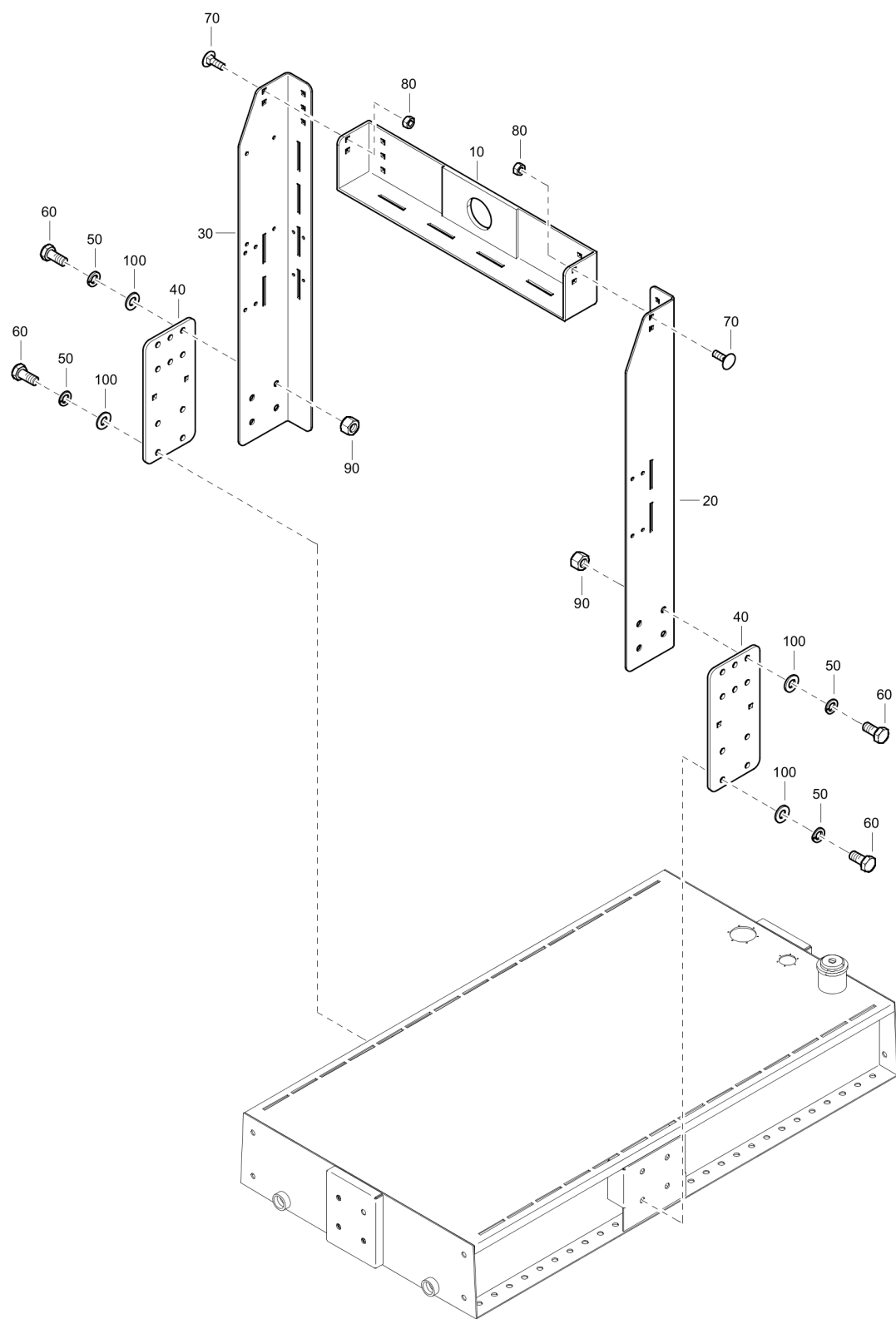
Item	Part No.	Name	Qty	L
10	4810058919	Tank	1	
20	4810058920	Support	1	
30	4810058921	Support	1	
40	4810061790	Support	2	
50	-	Complete battery assembly	1	
60	4810049950	Antivibration pad	8	
70	4810042844	Spacer	4	
80	4810047242	Spacer	4	
90	4810001826	Stud	8	
100	4810001680	Washer	8	
110	4810001705	Washer	8	
120	4810036239	Screw	16	
130	4810001420	Nut	16	
140	4810001689	Washer	16	
150	4810001679	Washer	16	
160	4810001961	Screw	10	
170	4810001964	Screw	6	
180	4810001422	Nut	6	
190	4810039995	Washer	6	
200	4810060389	Engine support	4	
210	-	Lifting bar assembly	1	
220	-	Level indicator assembly	1	
230	4810057099	Secured cap	1	
240	4810002383	Plug	2	
250	4810065466	Fuel in/out	1	
260	-	Hex. head screw	1	

**Mechanical** 4810058923\_00 Complete battery assembly



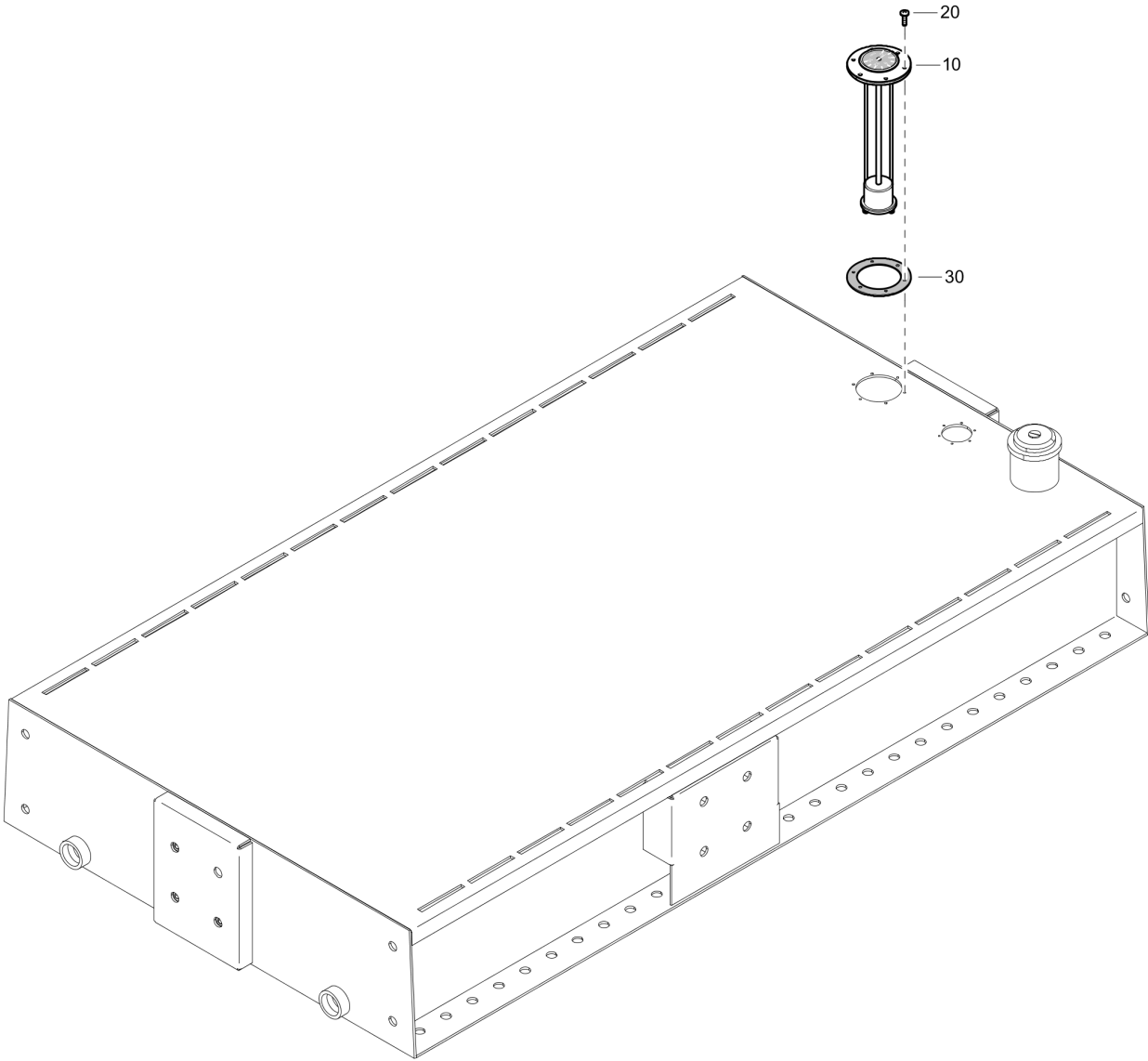
Item	Part No.	Name	Qty	L
10	4810059026	Battery support	1	
20	4810059027	Battery housing	1	
30	4810059028	Battery cover	1	
40	4810001679	Washer	11	
50	4810001936	Screw	11	
60	4810002438	Battery	1	

**Mechanical** 4810062070\_00 Lifting bar assembly

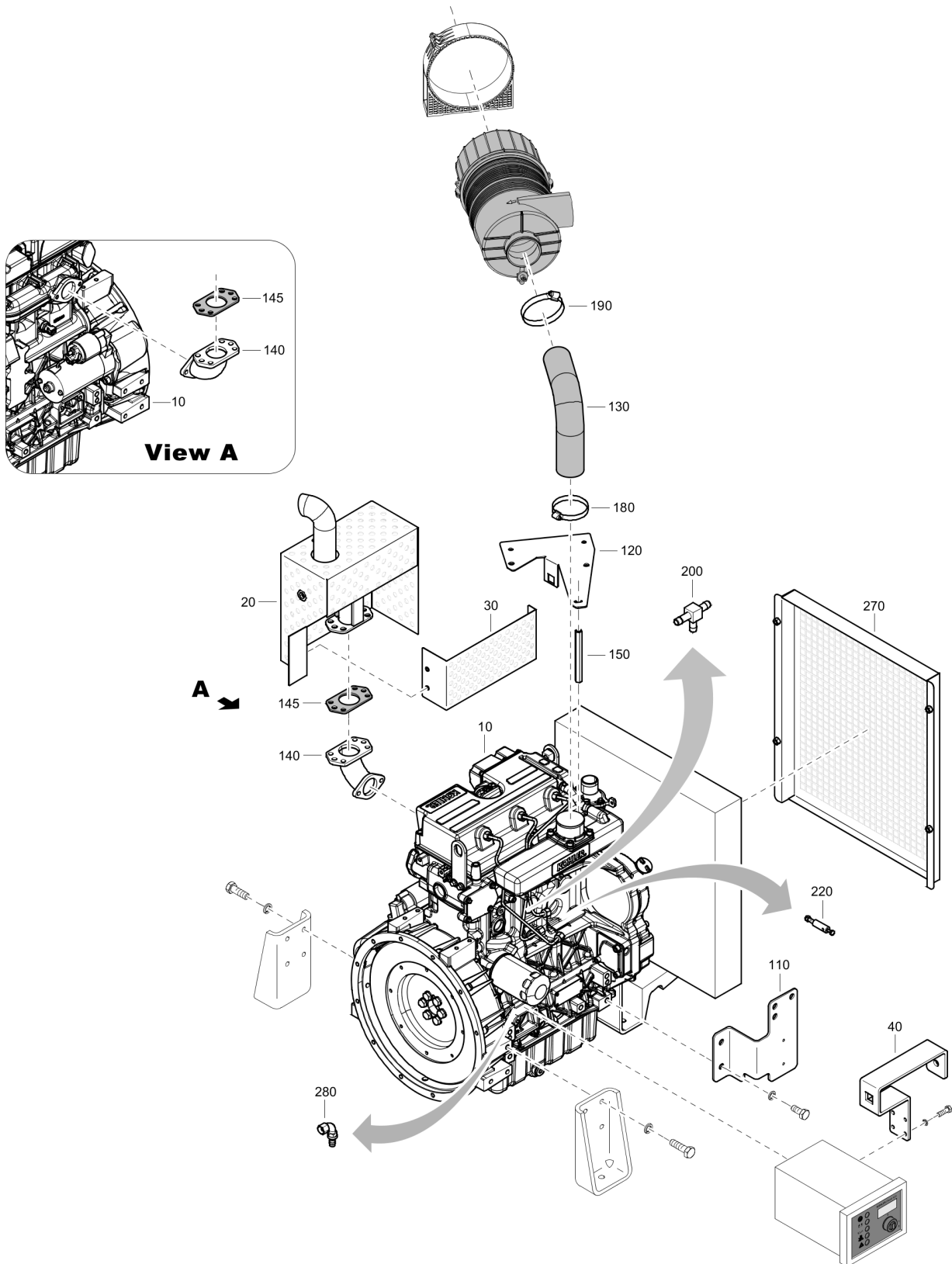


Item	Part No.	Name	Qty	L
10	4810053456	Lifting beam	1	
20	4810058931	Lifting corner	1	
30	4810058932	Lifting corner	1	
40	4810058933	Lifting plate	2	
50	4810001683	Washer	16	
60	4810001972	Screw	16	
70	4810036238	Screw	10	
80	4810001422	Nut	10	
90	4810001456	Nut	8	
100	4810001693	Washer	18	

**Mechanical** 4810056618\_00 Level indicator assembly



Item	Part No.	Name	Qty	L
10	4810056553	Fuel indicator	1	
20	4810032680	Screw	6	
30	4810062637	Gasket	1	

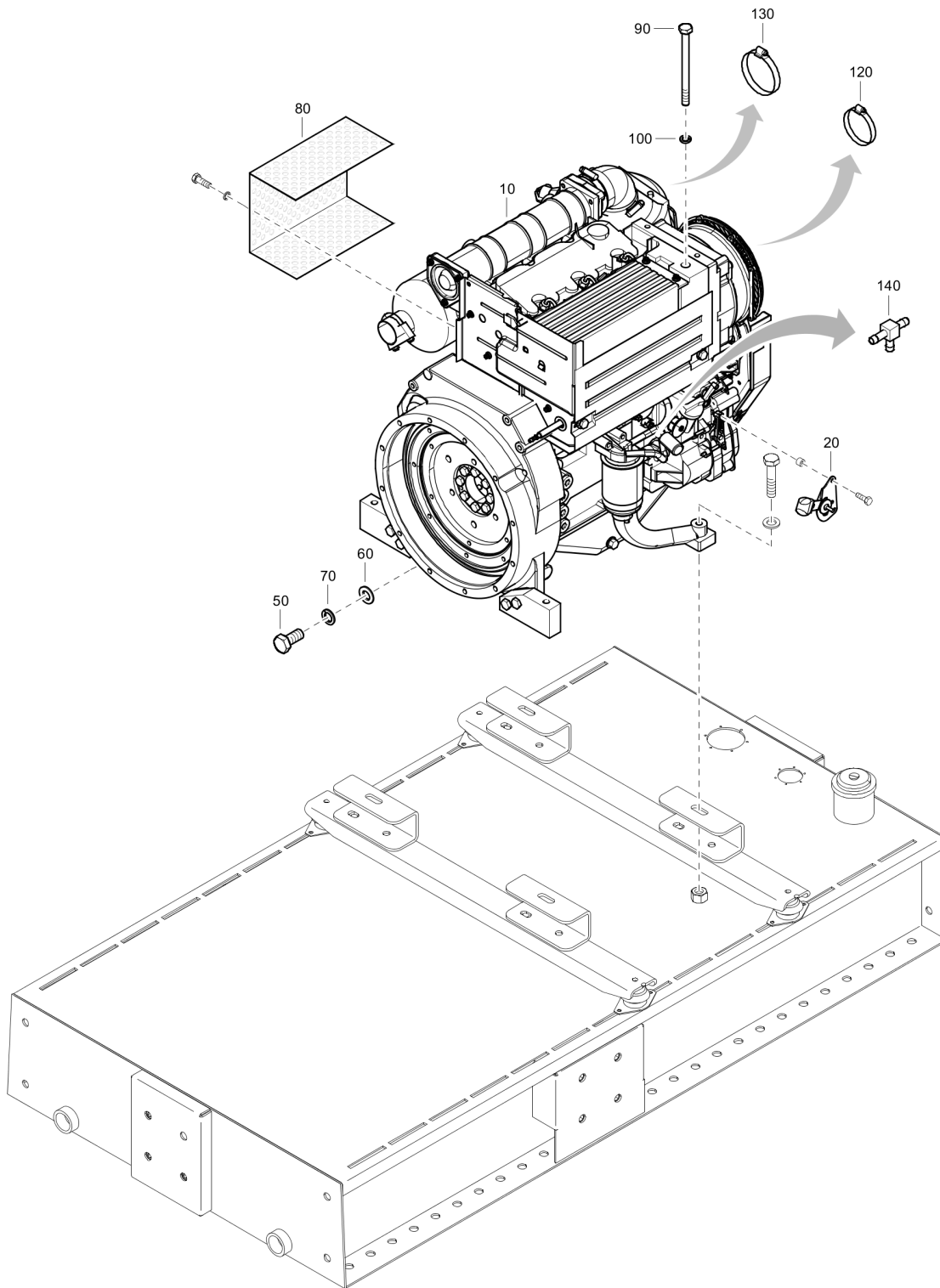
**Mechanical** 4810061620\_00 Complete engine assembly - KDI 1903 M

Refer to Parts Online for the most up to date information. The printed information might be outdated.

Tue May 12 11:30:37 UTC 2020



Item	Part No.	Name	Qty	L
10	4810057896	Engine	1	
20	4810002873	Exhaust	1	
30	4810057199	Support	1	
40	4810057418	Support for engine speed controller	1	
110	4810057419	Filter support	1	
120	4810057171	Air filter support	1	
130	4810057606	Elbow	1	
140	4810057198	Exhaust connection elbow	1	
145	4810031804	Gasket	1	
150	4810057200	Extension	1	
180	4810049572	Clamp	1	
190	4810030116	Clamp	1	
200	4810057845	Nipple	1	
220	4810058596	Blocking pin	1	
270	4810058478	Protection	1	
280	4810060402	Elbow	1	

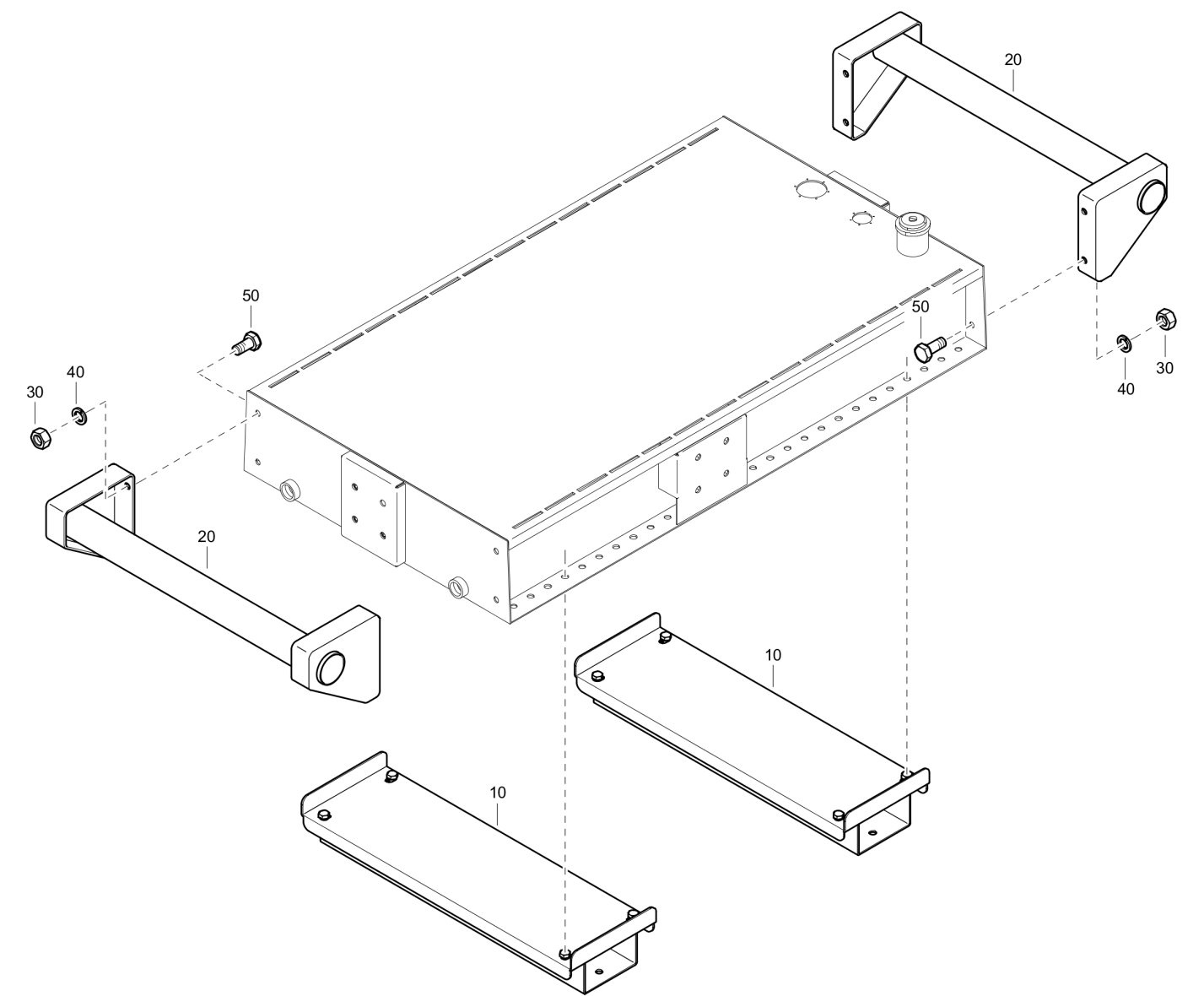
**Mechanical** 4810061963\_00 Complete engine assembly - D2011L03 - 2.0 - RPM 2000

Refer to Parts Online for the most up to date information. The printed information might be outdated.

Tue May 12 11:30:37 UTC 2020

Item	Part No.	Name	Qty	L
10	4810061962	Engine	1	
20	4810002973	Engine speed control	1	
50	4810053791	Screw	4	
60	4810001692	Washer	4	
70	4810001682	Washer	4	
80	4810047940	Protection	1	
90	4810043944	Screw	12	
100	4810001680	Washer	12	
120	4810049572	Clamp	1	
130	4810030116	Clamp	1	
140	4810057845	Nipple	1	

Options / accessories 4810061913\_00 Skid assembly - 01

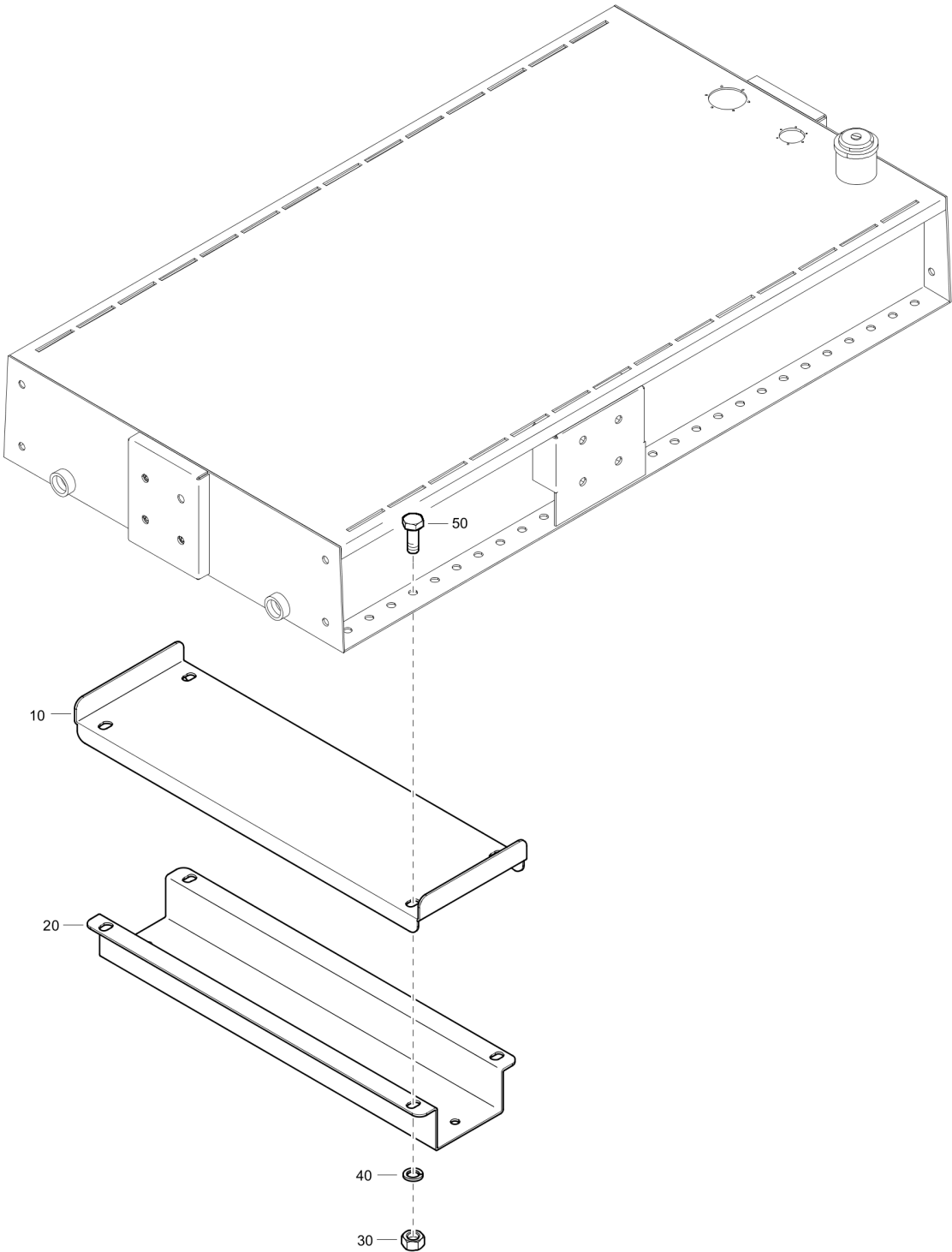


Refer to Parts Online for the most up to date information. The printed information might be outdated.

Tue May 12 11:30:39 UTC 2020

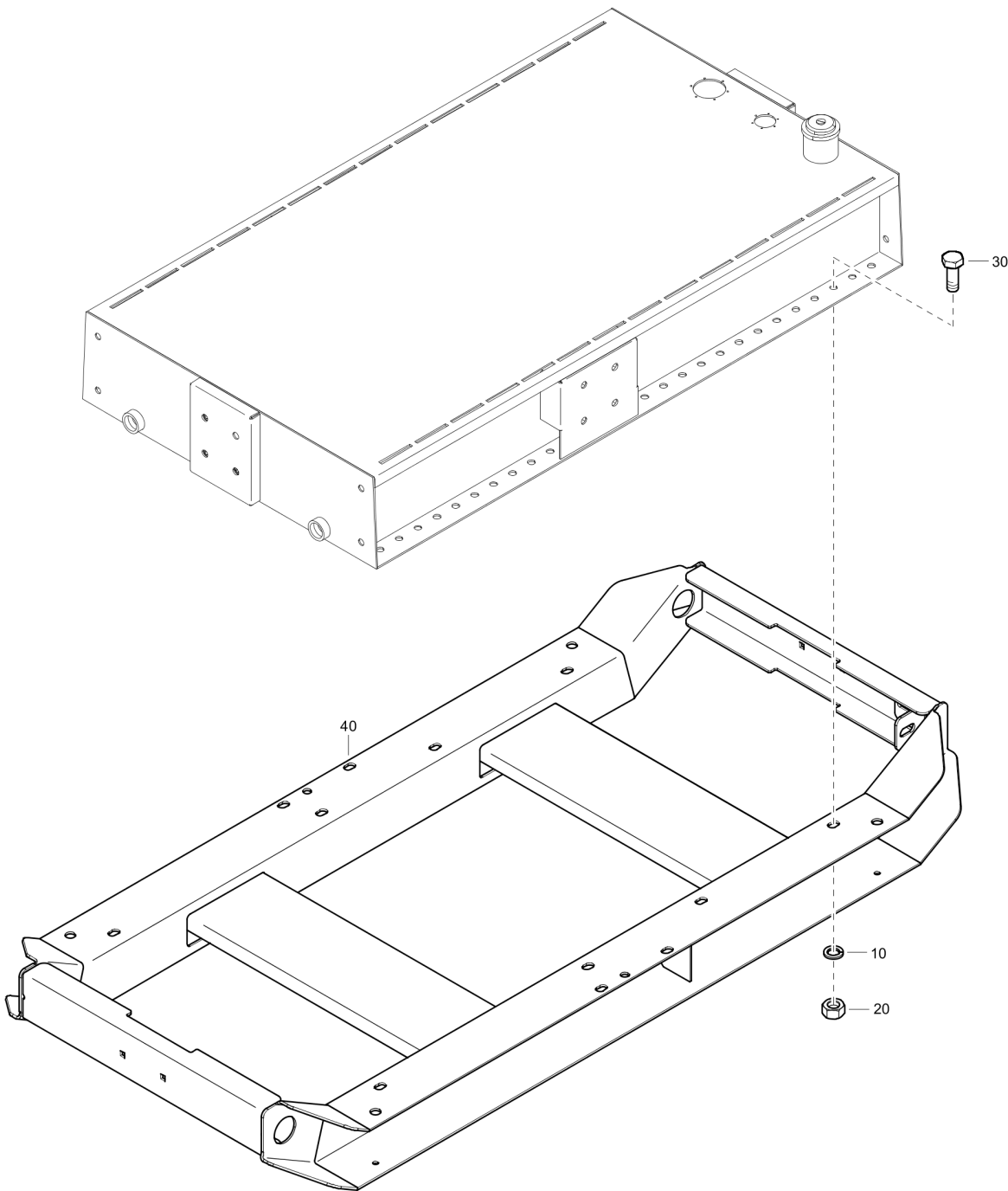
Item	Part No.	Name	Qty	L
10	-	Lifting assembly	1	
20	4810055307	Skid light	2	
30	4810001456	Nut	8	
40	4810001683	Washer	8	
50	4810001971	Screw	8	

Options / accessories 4810055267\_00 Lifting assembly



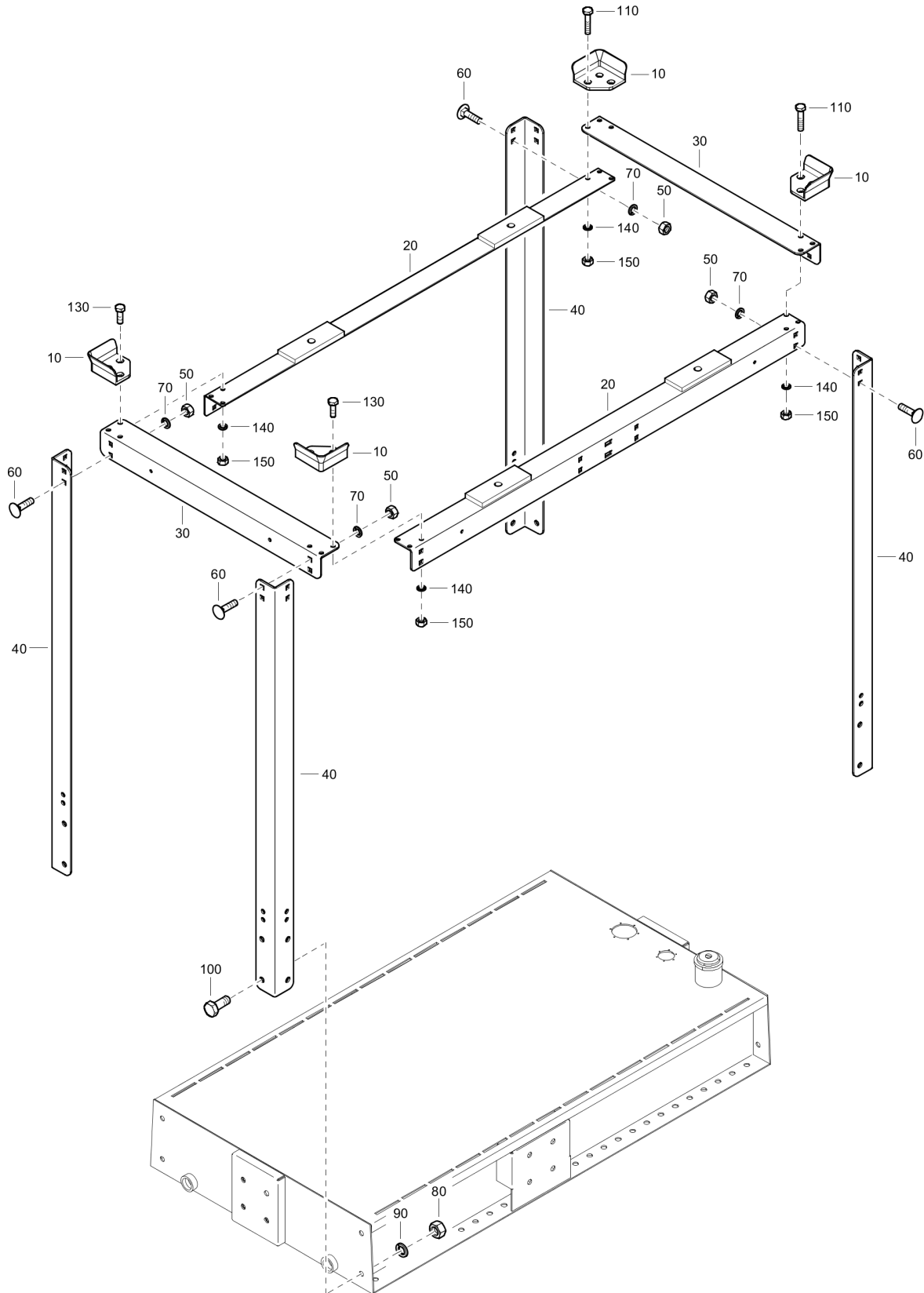
Item	Part No.	Name	Qty	L
10	4810053575	Protection	2	
20	4810053576	Bracket	2	
30	4810001425	Nut	8	
40	4810001683	Washer	8	
50	4810001972	Screw	8	

**Options / accessories** 4810061916\_00 Skid assembly - KDI 1903 M





Item	Part No.	Name	Qty	L
10	4810001683	Washer	8	
20	4810001456	Nut	8	
30	4810001972	Screw	8	
40	4810058300	Skid heavy	1	

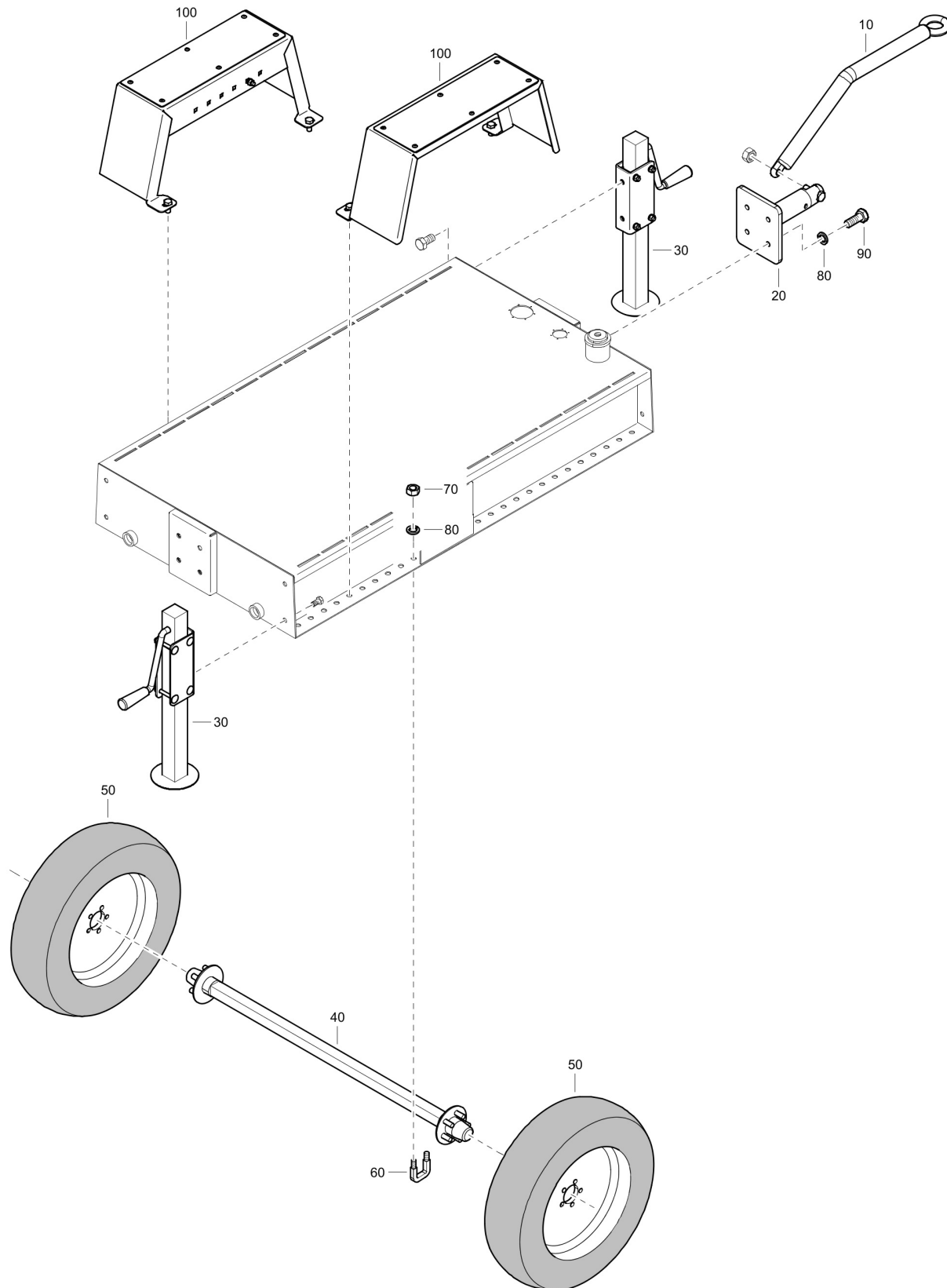
**Options / accessories** 4810061921\_00 Kit stack

Refer to Parts Online for the most up to date information. The printed information might be outdated.

Tue May 12 11:30:41 UTC 2020

Item	Part No.	Name	Qty	L
10	4810055314	Corner stacking	4	
20	4810062067	Horizontal angle roll bar	2	
30	4810062068	Transverse angle roll bar	2	
40	4810062069	Vertical angle roll bar	4	
50	4810001422	Nut	24	
60	4810036238	Screw	24	
70	4810001681	Washer	24	
80	4810001456	Nut	8	
90	4810001683	Washer	8	
100	4810001971	Screw	8	
110	4810059430	Screw	12	
130	4810001948	Screw	12	
140	4810001691	Washer	12	
150	4810001421	Nut	12	

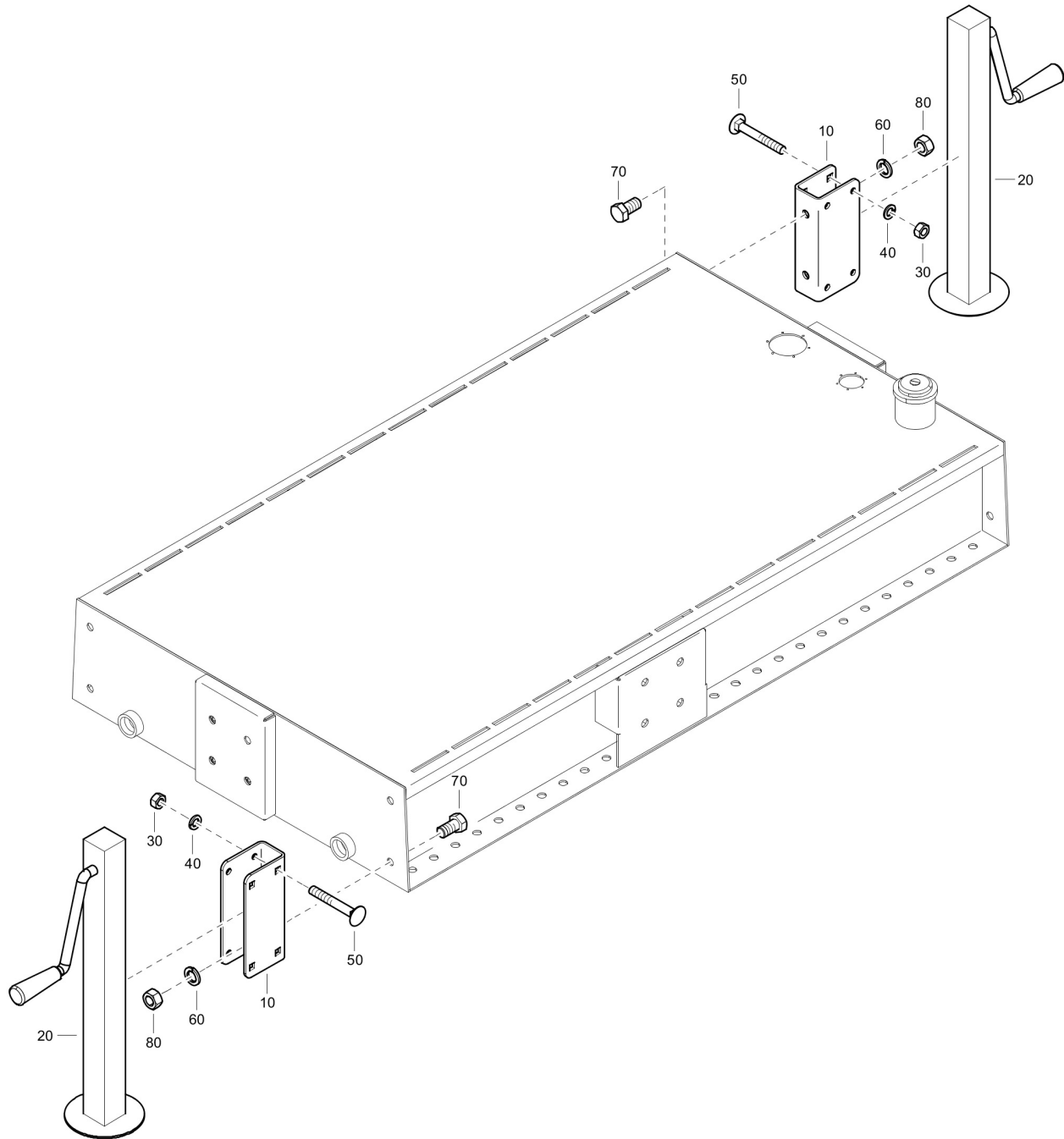
**Options / accessories** 4810061904\_00 Trailer assembly - D2011L03



Refer to Parts Online for the most up to date information. The printed information might be outdated.

Tue May 12 11:30:42 UTC 2020

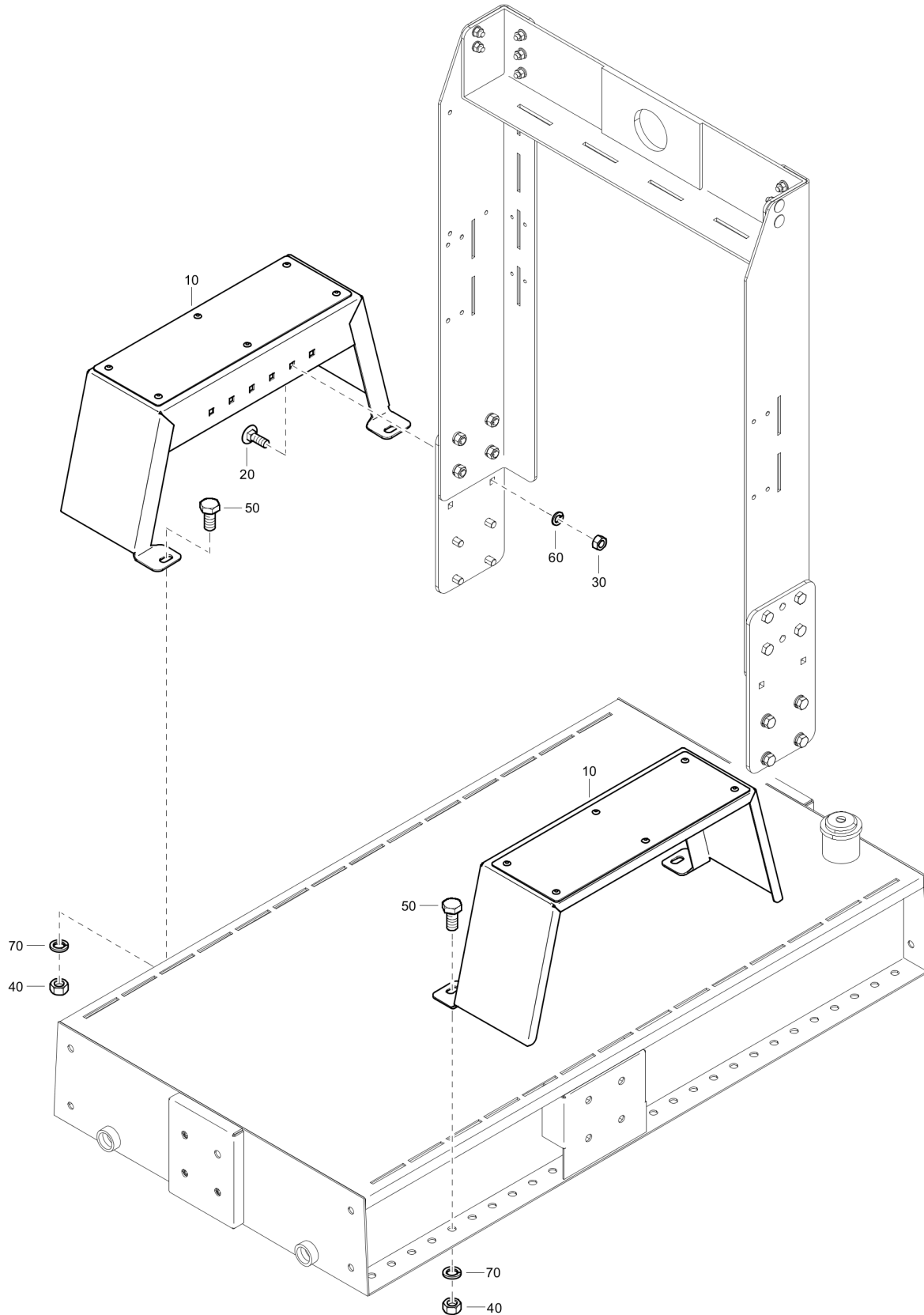
Item	Part No.	Name	Qty	L
10	4810058934	Towbar	1	
20	4810058935	Towbar bracket	1	
30	-	Foot assembly	2	
40	4810007052	Axle	1	
50	4810052658	Wheel	2	
60	4810007524	Handle	2	
70	4810001456	Nut	4	
80	4810001683	Washer	8	
90	4810001973	Screw	4	
100	-	Kit mudguards	1	

**Options / accessories** 4810055266\_00 Foot assembly - D2011L03

Refer to Parts Online for the most up to date information. The printed information might be outdated.

Tue May 12 11:30:42 UTC 2020

Item	Part No.	Name	Qty	L
10	4810053533	Foot support	2	
20	4810054532	Foot	2	
30	4810001422	Nut	8	
40	4810001681	Washer	8	
50	4810053535	Screw	8	
60	4810001683	Washer	4	
70	4810001971	Screw	4	
80	4810001456	Nut	4	

**Options / accessories** 8381060032\_00 Kit mudguards - D2011L03

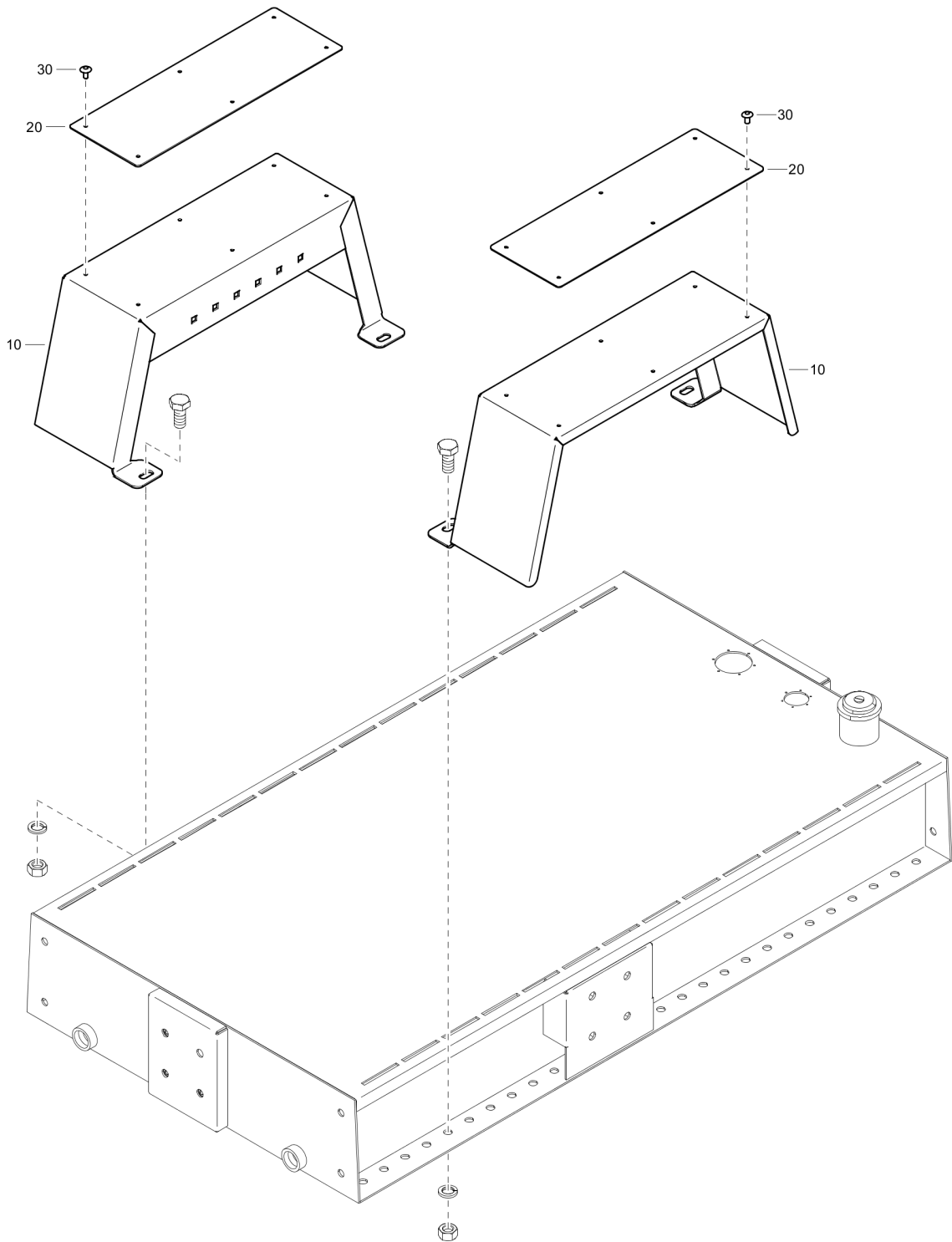
Refer to Parts Online for the most up to date information. The printed information might be outdated.

Tue May 12 11:30:43 UTC 2020

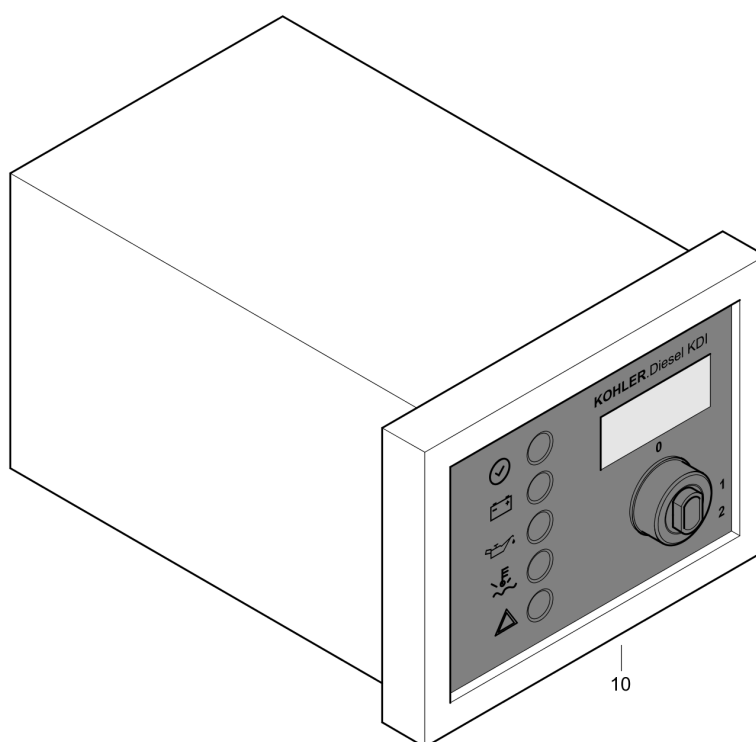


Item	Part No.	Name	Qty	L
10	-	Mudguard assembly	2	
20	4810036238	Screw	2	
30	4810001422	Nut	2	
40	4810001456	Nut	4	
50	4810001972	Screw	4	
60	4810001681	Washer	2	
70	4810001683	Washer	4	

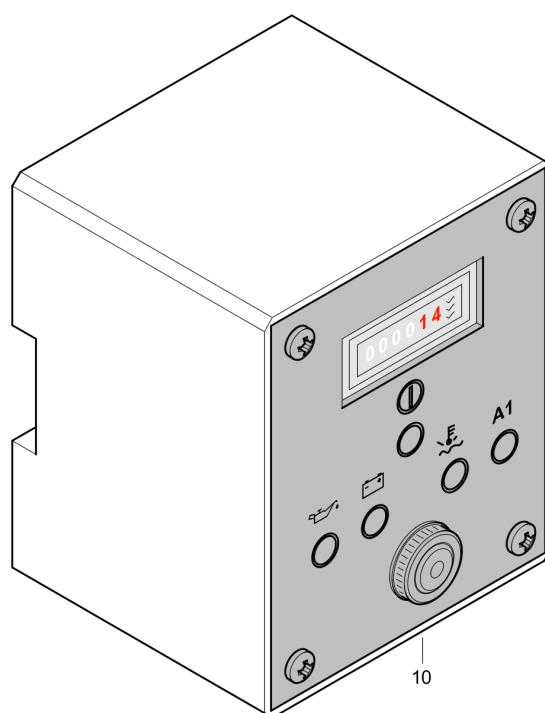
Options / accessories 4810058936\_00 Mudguard assembly - D2011L03



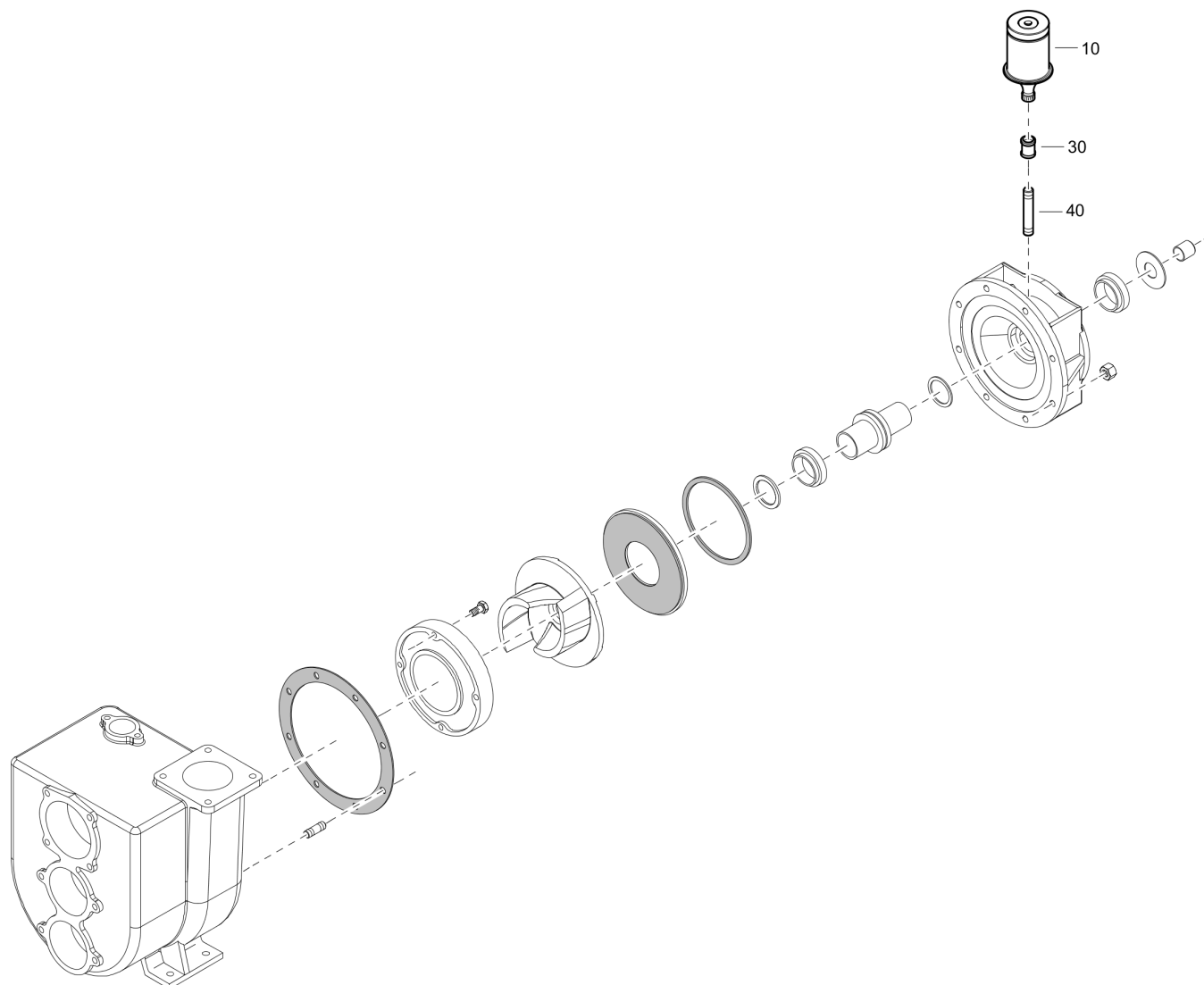
Item	Part No.	Name	Qty	L
10	4810058937	Mudguard	2	
20	4810053513	Protection	2	
30	4810053515	Rivet	12	

**Options / accessories** 4810060655\_00 Control panel - KDI 1903 M

Item	Part No.	Name	Qty	L
10	4810060655	Control Panel	1	

**Options / accessories** 4810049113\_00 Control panel - D2011L03

Item	Part No.	Name	Qty	L
10	4810049113	Control panel	1	

**Options / accessories** 4810061994\_00 Grease cartridge kit

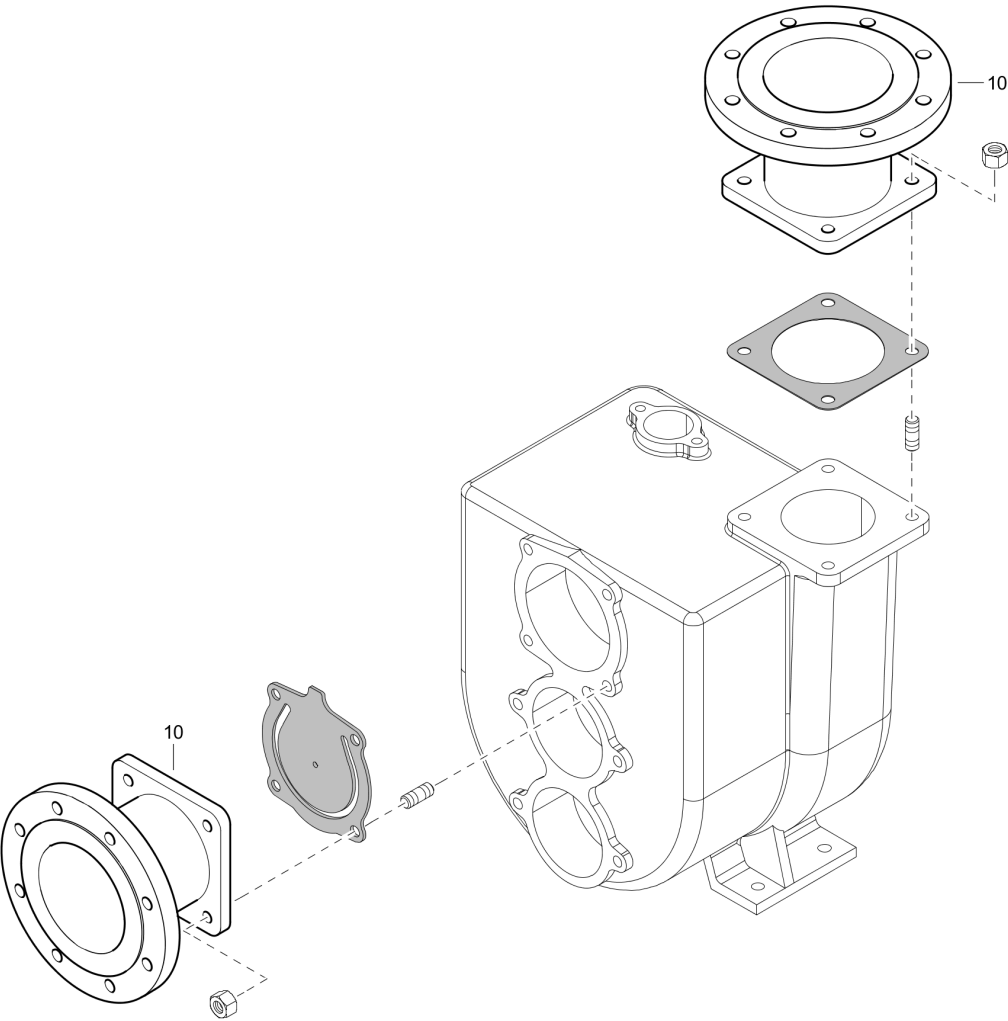
Refer to Parts Online for the most up to date information. The printed information might be outdated.

Tue May 12 11:30:46 UTC 2020

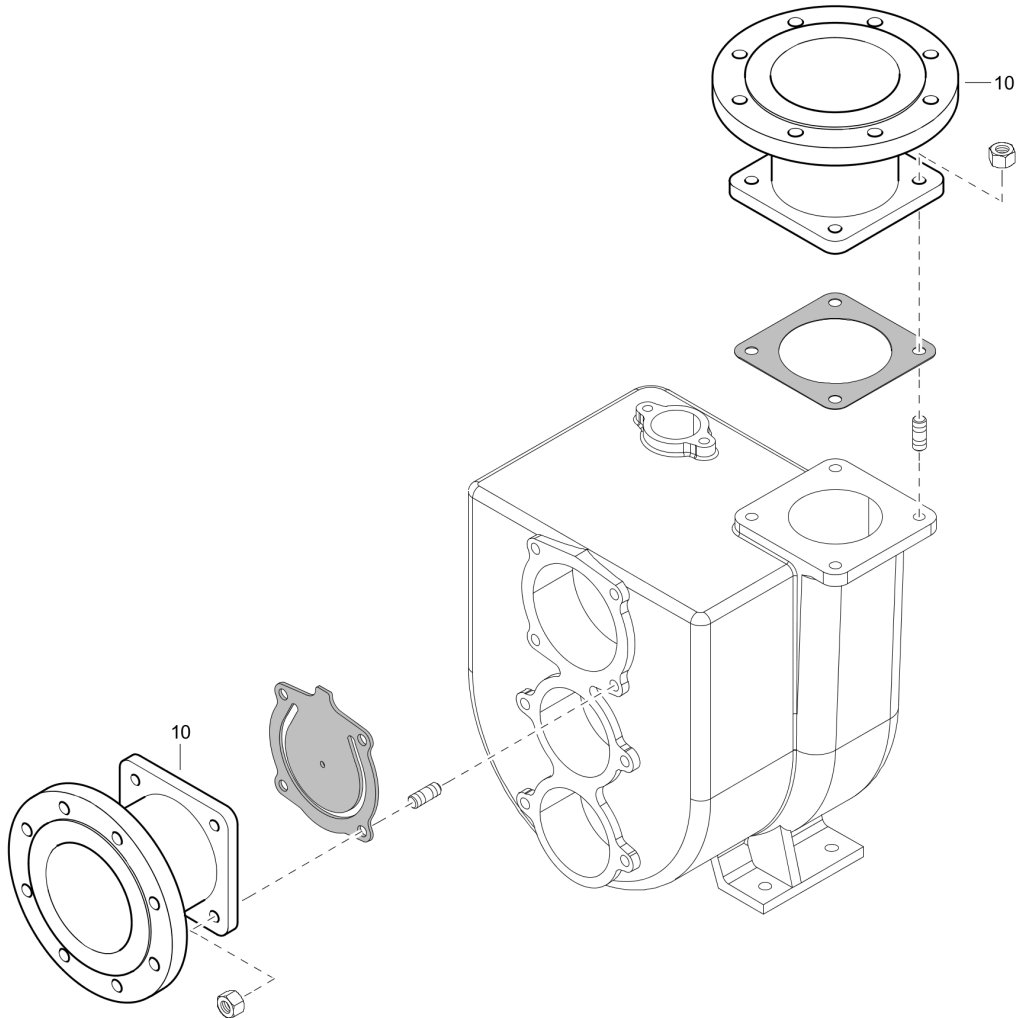


Item	Part No.	Name	Qty	L
10	4810001666	Chemical greaser cartridge	1	
20	4810020809	Spring greaser cartridge	1	
30	4810002352	Connection	1	
40	4810006955	Pipe	1	

**Options / accessories** 1805120045\_00 Flange Kit - 4" DIN



Item	Part No.	Name	Qty	L
10	4810061832	Flange kit	1	

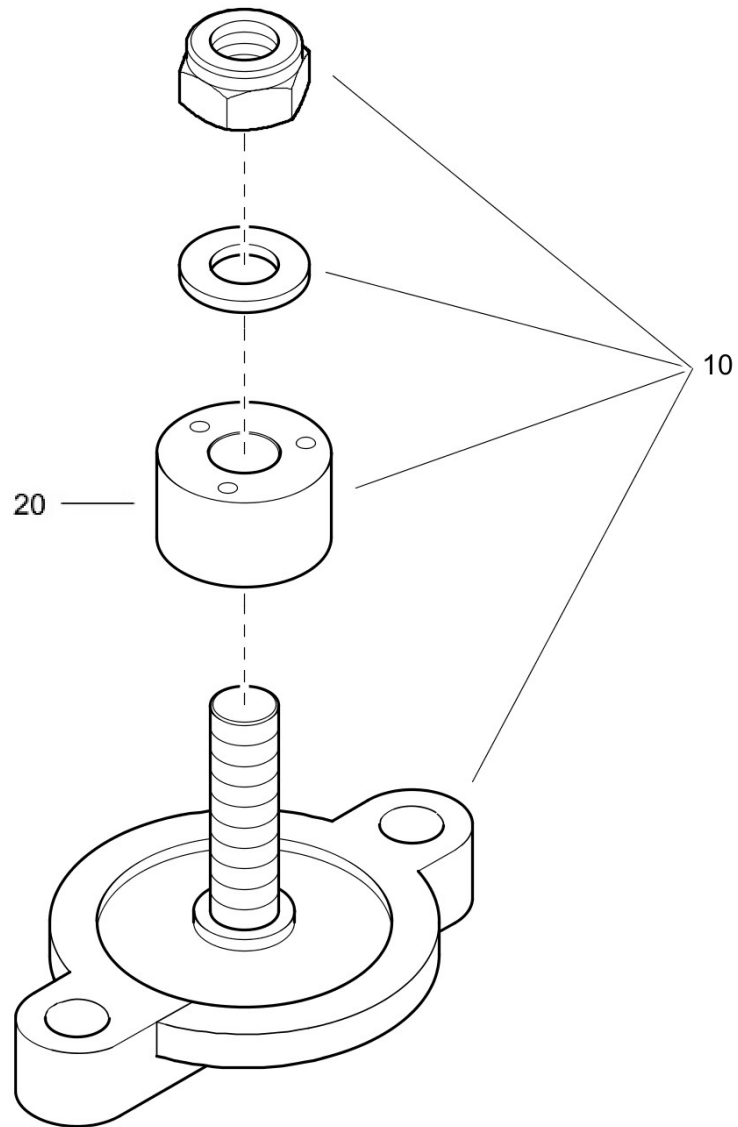
**Options / accessories** 1805120050\_00 Flange Kit - 4" ANSI

Refer to Parts Online for the most up to date information. The printed information might be outdated.

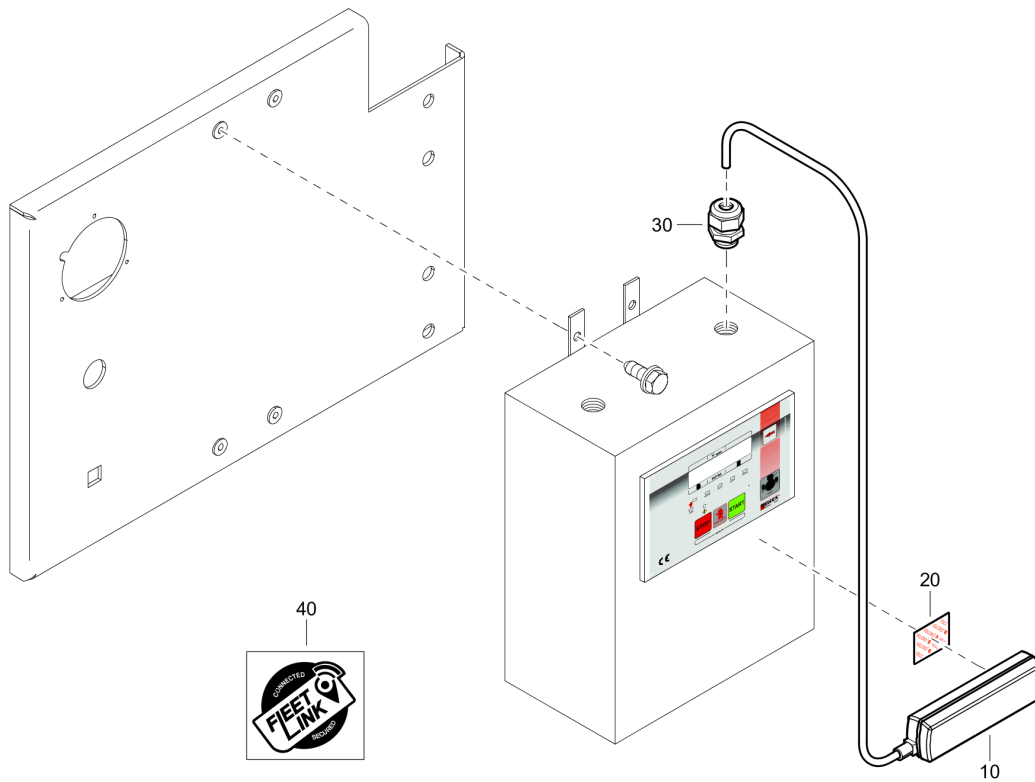
Tue May 12 11:30:47 UTC 2020

Item	Part No.	Name	Qty	L
10	4810061838	Flange kit	1	

**Options / accessories** 1805120071\_00 Zinc kit - VAR 4-250



Item	Part No.	Name	Qty	L
10	4810061815	Zinc kit	1	
20	4810003810	Anode	1	

**Options / accessories** 4810066428\_00 Fleetlink locator retrofit kit

Refer to Parts Online for the most up to date information. The printed information might be outdated.

Tue May 12 11:30:48 UTC 2020



Item	Part No.	Name	Qty	L
10	-	Locator module	1	
20	-	Velcro® strips	2	
30	-	Cable gland	1	
40	-	Fleetlink sticker	1	

Any unauthorized use or copying of the contents or any part thereof is prohibited.  
This applies in particular to trademarks, model denominations, part numbers, and  
drawings.

