

# VAR 3-140 ITH

---



## Spare Parts List

### Self Priming Centrifugal Pump

VAR 3-140 ITH s/n ITH0000001 -

Engine: 15LD440/CH440



# General information

This spare parts list applies to the following:

| Part number | Description         |
|-------------|---------------------|
| 8381060811  | VAR 3-140 - 15LD440 |
| 8381060866  | VAR 3-140 - CH440   |

Use only authorized parts. Any damage or malfunction caused by the use of unauthorized parts is not covered by Warranty or Product Liability. Any unauthorized use or copying of the contents or any part thereof is prohibited. This applies in particular to trademarks, model denominations, part numbers, and drawings.

## Instructions for use

This spare parts list contains no safety regulations and is merely intended to assist in the ordering of spare parts.

For information about operating, servicing, or repairing, the relevant Safety and operating instructions must be consulted at all costs.

Please observe the safety instructions listed in the relevant Safety and operating instructions!

|   |   |
|---|---|
| Kits and consumables - 8381060811 - 15LD440 | 1 |
| Kits and consumables - 8381060866 - CH440   | 3 |

## Service

|   |    |
|---|----|
| 4810061522_00 Service Pak 500 Hr - 8381060811 - 15LD440 | 5  |
| 4810066461_00 Service Pak 250 Hr - 8381060866 - CH440   | 7  |
| 4810067178_00 Service Pak 500 Hr - 8381060866 - CH440   | 9  |
| 4810061524_00 Wear part kit                             | 11 |
| 4810061523_00 Seal kit                                  | 13 |

## Engine

|                              |    |
|------------------------------|----|
| Engine Spare Parts - 15LD440 | 15 |
| Engine Spare Parts - CH440   | 17 |

## Mechanical

|  |    |
|--|----|
| 4810014363_00 Set of screws                      | 19 |
| 4810014364_00 Set of gaskets                     | 21 |
| 4810014124_00 Set of cover                       | 23 |
| 4810017171_00 Pump core                          | 25 |
| 4810014375_00 Extension                          | 27 |
| 4810008898_00 Mechanical seal assembly           | 29 |
| 4810009019_00 Check valve assembly               | 31 |
| 4810014374_00 Complete shaft assembly            | 33 |
| 4810007833_00 Frame assembly - 15LD440           | 35 |
| 4810063350_00 Frame assembly - CH440             | 37 |
| 4810058781_00 Complete engine assembly - 15LD440 | 39 |
| 4810063349_00 Complete engine assembly - CH440   | 41 |

## Options / accessories

## Kits and consumables - 8381060811 - 15LD440

| VAR 3-140 Trolley - 15LD440                   |             |                                    | Change interval / quantity |                          |             |
|---|-------------|------------------------------------|----------------------------|--------------------------|-------------|
| Kits/consumables                              | Item number | Description                        | 250 Hr                     | 500 Hr                   | When needed |
| Maintenance kit                               | 1           | Service Pak 500 Hr                 |                            | 1                        |             |
| Engine oil<br>Change every 250 Hr or 6 months | 2           | Can Paroil E 5 Liter/1.32 Gallon   | 1.5 Liter<br>0.39 Gallon   | 1.5 Liter<br>0.39 Gallon |             |
|   | 3           | Can Paroil E 20 Liter/5.3 Gallon   |                            |                          |             |
|   | 4           | Can Paroil E 210 Liter/55.5 Gallon |                            |                          |             |
| Service and repair kit                        | 5           | Wear part kit                      |                            |                          | 1           |
|   | 6           | Seal kit                           |                            |                          | 1           |
| Mechanical seal grease                        | 7           | Parlube (0,4 KGS)                  |                            |                          | 1           |

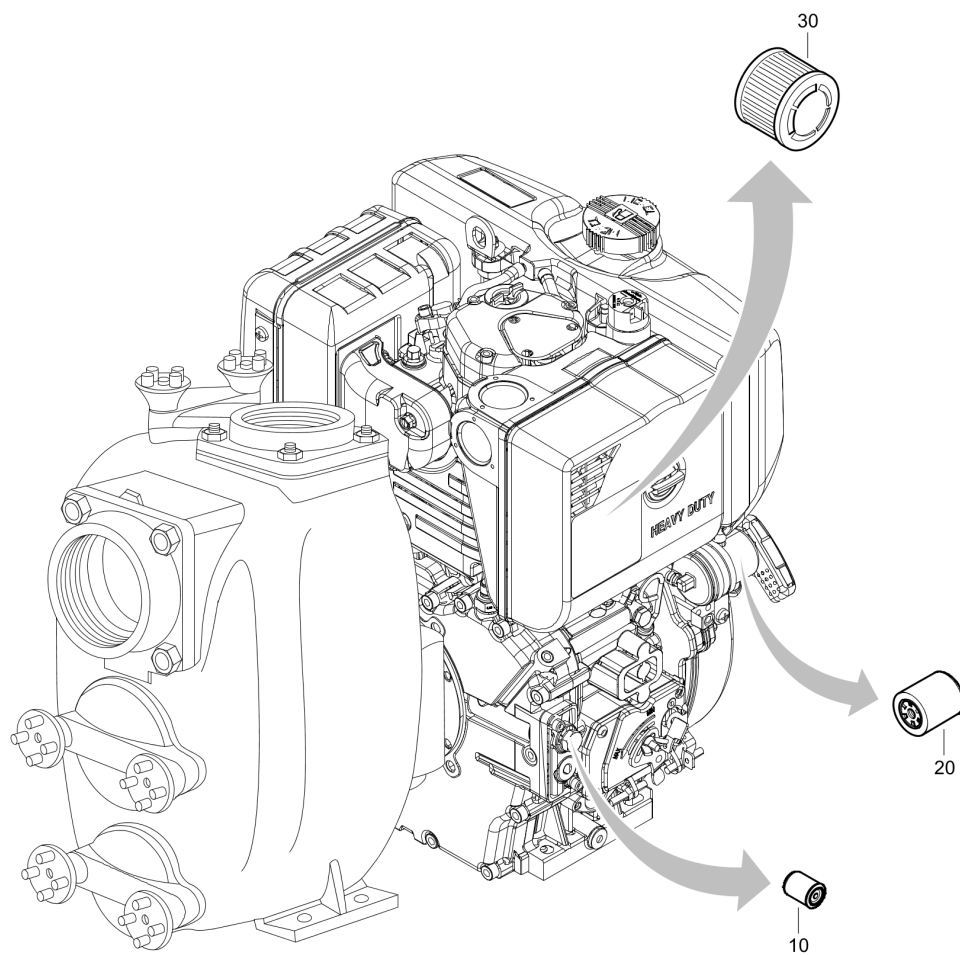
| Item | Part No.   | Name                                  | Qty | L |
|------|------------|---------------------------------------|-----|---|
| 1    | 4810061522 | Service Pak 500 Hr                    | 1   |   |
| 2    | 1615595300 | Can Paroil E 5 Liter/1.32 Gallon      | 1   |   |
| 3    | 1615595400 | Can Paroil E 20 Liter/5.3 Gallon      | 1   |   |
| 4    | 1615595500 | Barrel Paroil E 210 Liter/55.5 Gallon | 1   |   |
| 5    | 4810061524 | Wear part kit                         | 1   |   |
| 6    | 4810061523 | Seal kit                              | 1   |   |
| 7    | 4812030095 | Parlube (0,4 KGS)                     | 1   |   |

## Kits and consumables - 8381060866 - CH440

| VAR 3-140 Trolley - CH440                     |             |                                    | Change interval / quantity |        |        |             |
|---|-------------|------------------------------------|----------------------------|--------|--------|-------------|
| Kits/consumables                              | Item number | Description                        | 100 Hr                     | 250 Hr | 500 Hr | When needed |
| Maintenance kit                               | 1           | Service Pak 250 Hr                 |                            | 1      |        |             |
|   | 2           | Service Pak 500 Hr                 |                            |        | 1      |             |
| Engine oil<br>Change every 250 Hr or 6 months | 3           | Can Paroil E 5 Liter/1.32 Gallon   | 1.3 Liter<br>0.34 Gallon   |        |        |             |
|   | 4           | Can Paroil E 20 Liter/5.3 Gallon   |                            |        |        |             |
|   | 5           | Can Paroil E 210 Liter/55.5 Gallon |                            |        |        |             |
| Service and repair kit                        | 6           | Wear part kit                      |                            |        |        | 1           |
|   | 7           | Seal kit                           |                            |        |        | 1           |
| Mechanical seal grease                        | 8           | Parlube (0,4 KGS)                  |                            |        |        | 1           |

| Item | Part No.   | Name                                  | Qty | L |
|------|------------|---------------------------------------|-----|---|
| 1    | 4810066461 | Service Pak 250 Hr                    | 1   |   |
| 2    | 4810067178 | Service Pak 500 Hr                    | 1   |   |
| 3    | 1615595300 | Can Paroil E 5 Liter/1.32 Gallon      | 1   |   |
| 4    | 1615595400 | Can Paroil E 20 Liter/5.3 Gallon      | 1   |   |
| 5    | 1615595500 | Barrel Paroil E 210 Liter/55.5 Gallon | 1   |   |
| 6    | 4810061524 | Wear part kit                         | 1   |   |
| 7    | 4810061523 | Seal kit                              | 1   |   |
| 8    | 4812030095 | Parlube (0,4 KGS)                     | 1   |   |

**Service** 4810061522\_00 Service Pak 500 Hr - 8381060811 - 15LD440



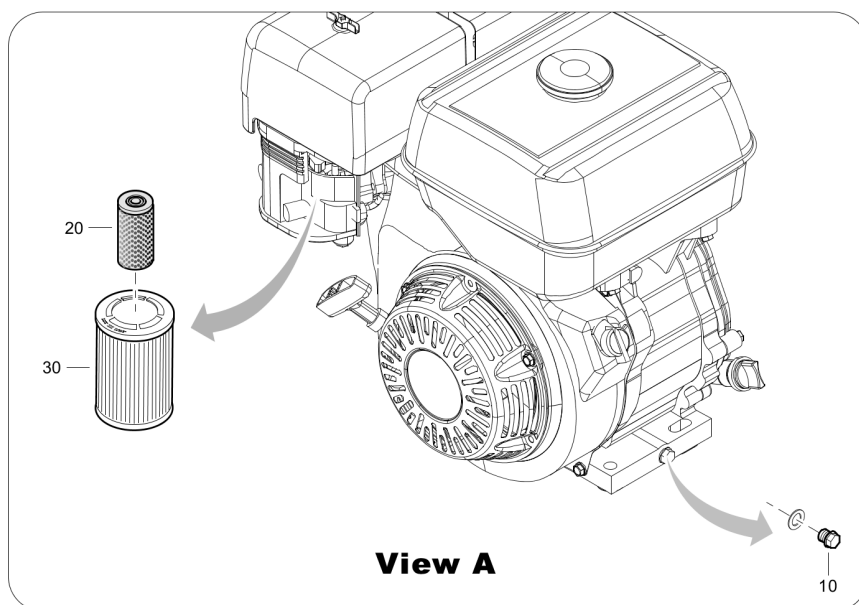
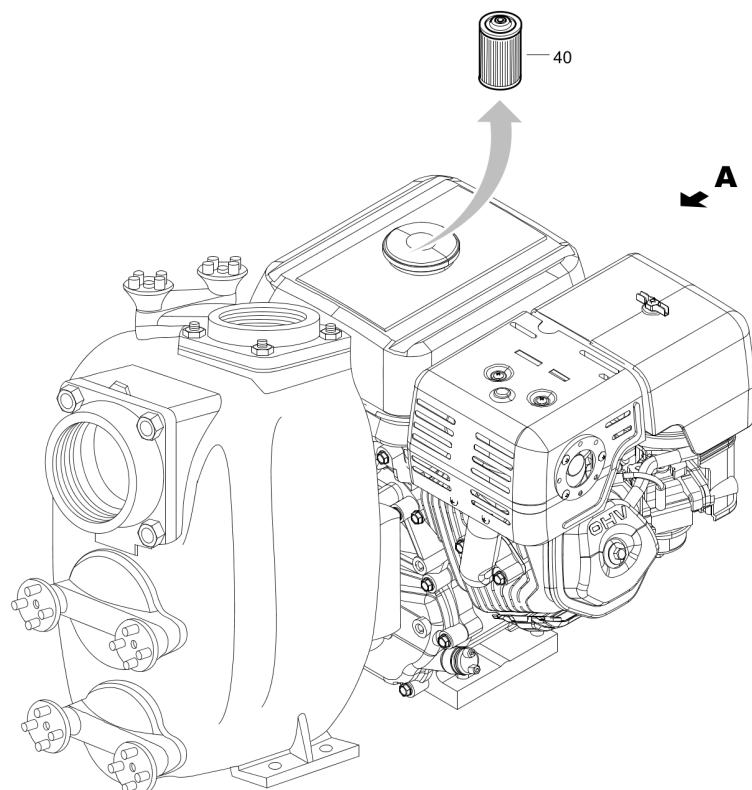
Refer to Parts Online for the most up to date information. The printed information might be outdated.

Tue May 12 11:30:09 UTC 2020



| Item | Part No.   | Name                  | Qty | L |
|------|------------|-----------------------|-----|---|
| -    | 4810061522 | Service Pak 500 Hr    | 1   |   |
| 10   | -          | Oil filter cartridge  | 1   |   |
| 20   | -          | Fuel filter cartridge | 1   |   |
| 30   | -          | Air filter cartridge  | 1   |   |

**Service** 4810066461\_00 Service Pak 250 Hr - 8381060866 - CH440

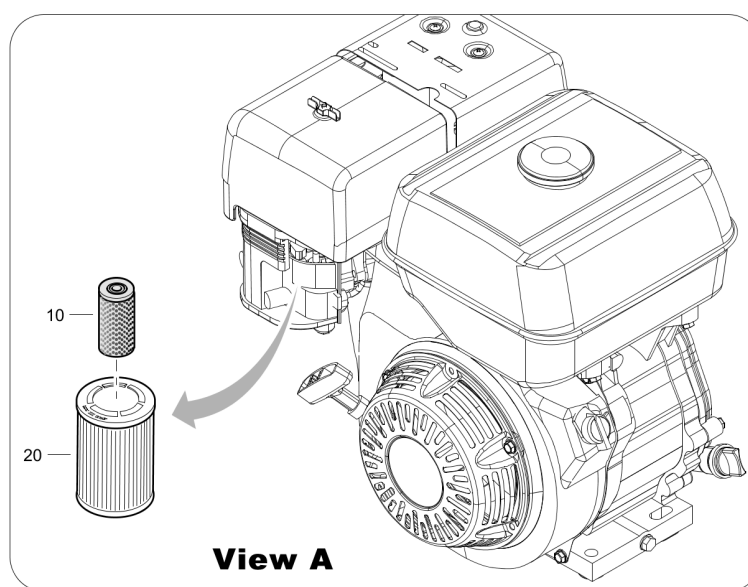
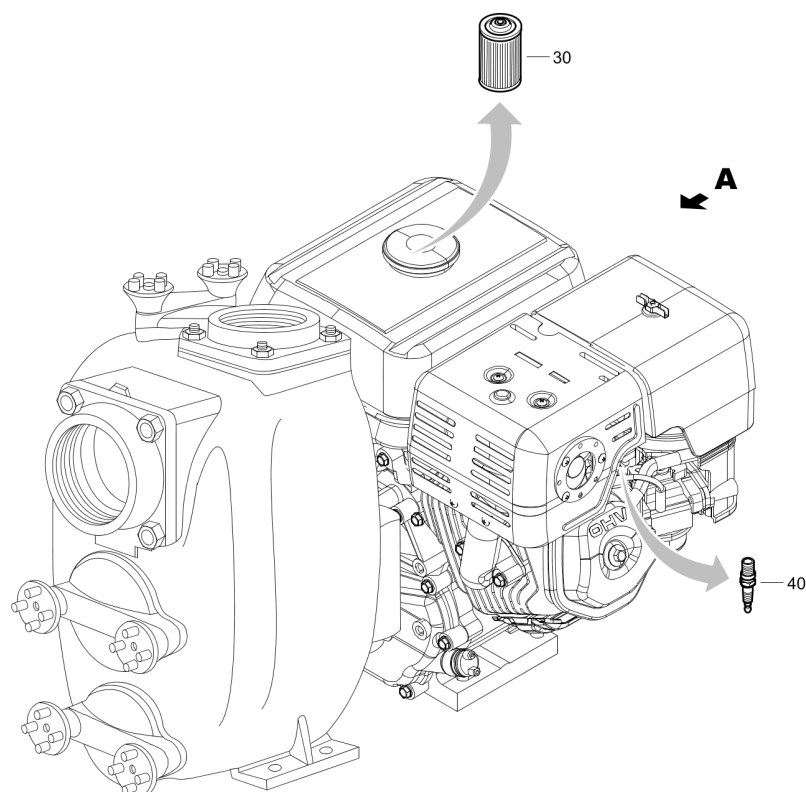


Refer to Parts Online for the most up to date information. The printed information might be outdated.

Tue May 12 11:30:09 UTC 2020

| Item | Part No.   | Name                    | Qty | L |
|------|------------|-------------------------|-----|---|
| -    | 4810066461 | Service Pak 250 Hr      | 1   |   |
| 10   | -          | Drain plug              | 1   |   |
| 20   | -          | Air pre-cleaner element | 1   |   |
| 30   | -          | Oil filter              | 1   |   |
| 40   | -          | Fuel tank filter        | 1   |   |

**Service** 4810067178\_00 Service Pak 500 Hr - 8381060866 - CH440

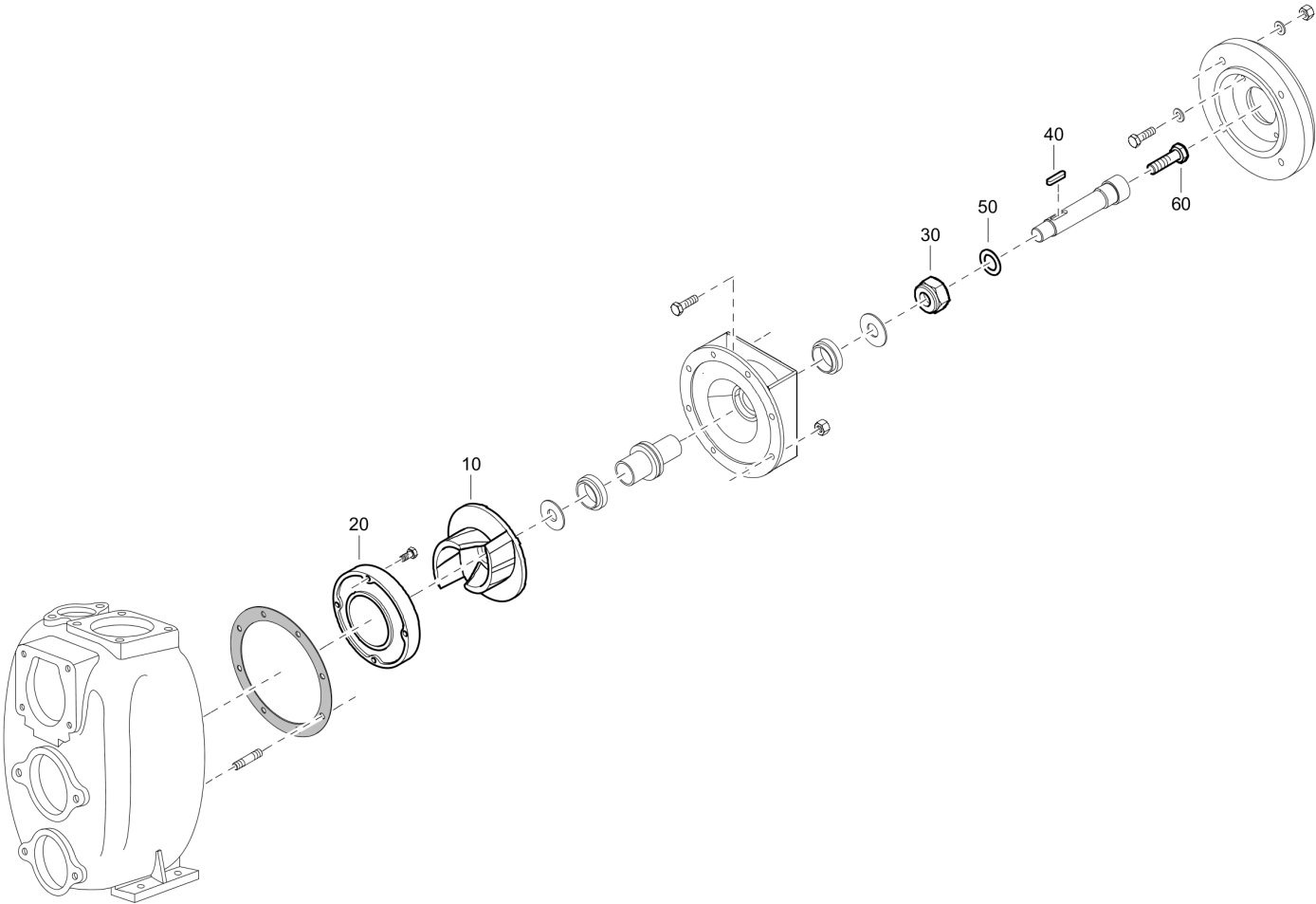


Refer to Parts Online for the most up to date information. The printed information might be outdated.

Tue May 12 11:30:10 UTC 2020

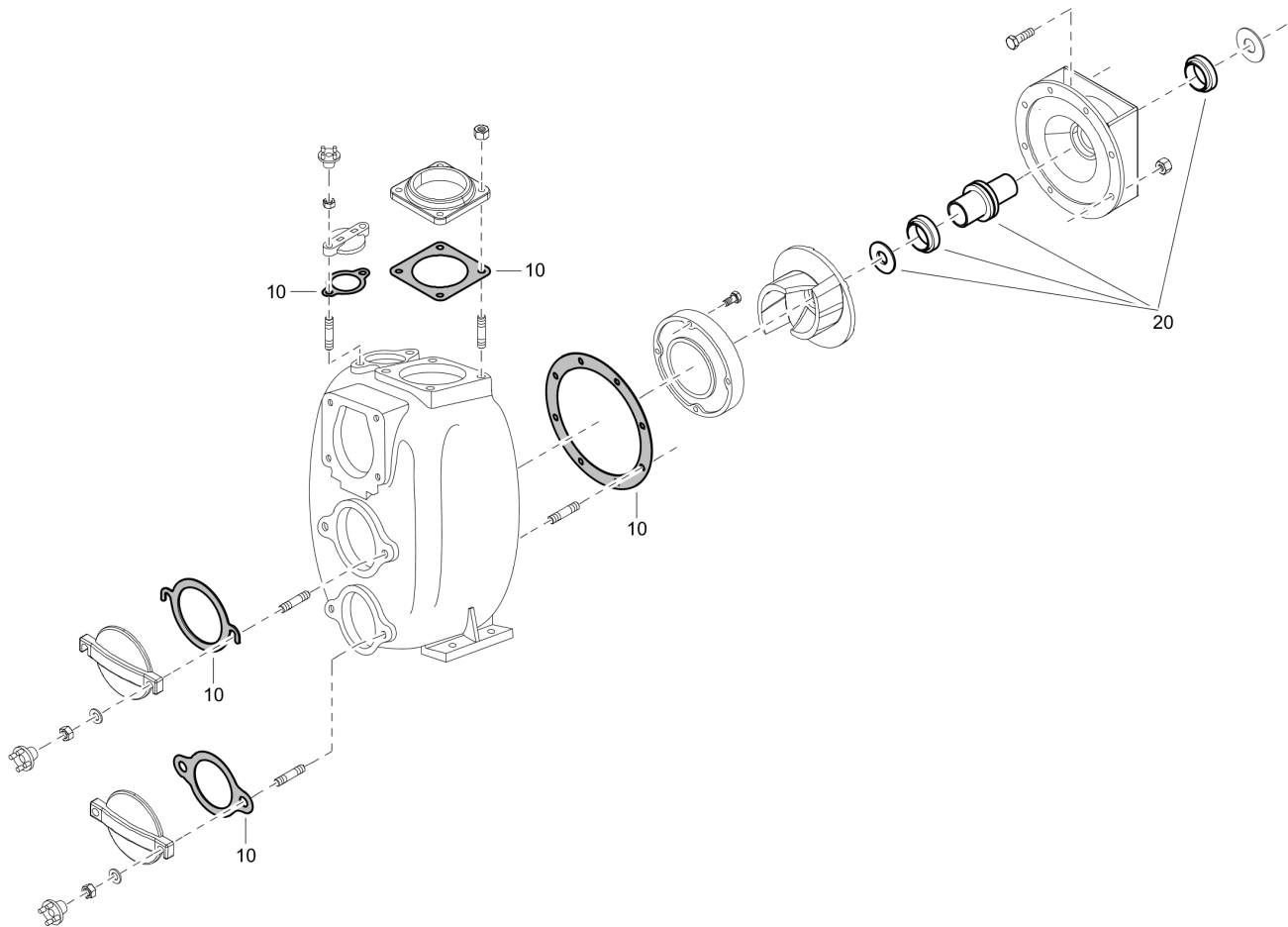
| Item | Part No.   | Name                    | Qty | L |
|------|------------|-------------------------|-----|---|
| -    | 4810067178 | Service Pak 500 Hr      | 1   |   |
| 10   | -          | Air pre-cleaner element | 1   |   |
| 20   | -          | Oil filter              | 1   |   |
| 30   | -          | Fuel tank filter        | 1   |   |
| 40   | -          | Spark plug              | 1   |   |

**Service** 4810061524\_00 Wear part kit



| Item | Part No.   | Name          | Qty | L |
|------|------------|---------------|-----|---|
| -    | 4810061524 | Wear part kit | 1   |   |
| 10   | 4810005337 | Impeller      | 1   |   |
| 20   | 4810006096 | Wear plate    | 1   |   |
| 30   | 4810001464 | Impeller nut  | 1   |   |
| 40   | 4810001621 | Key           | 1   |   |
| 50   | 4810001712 | Washer        | 1   |   |
| 60   | 4810001866 | Screw         | 1   |   |

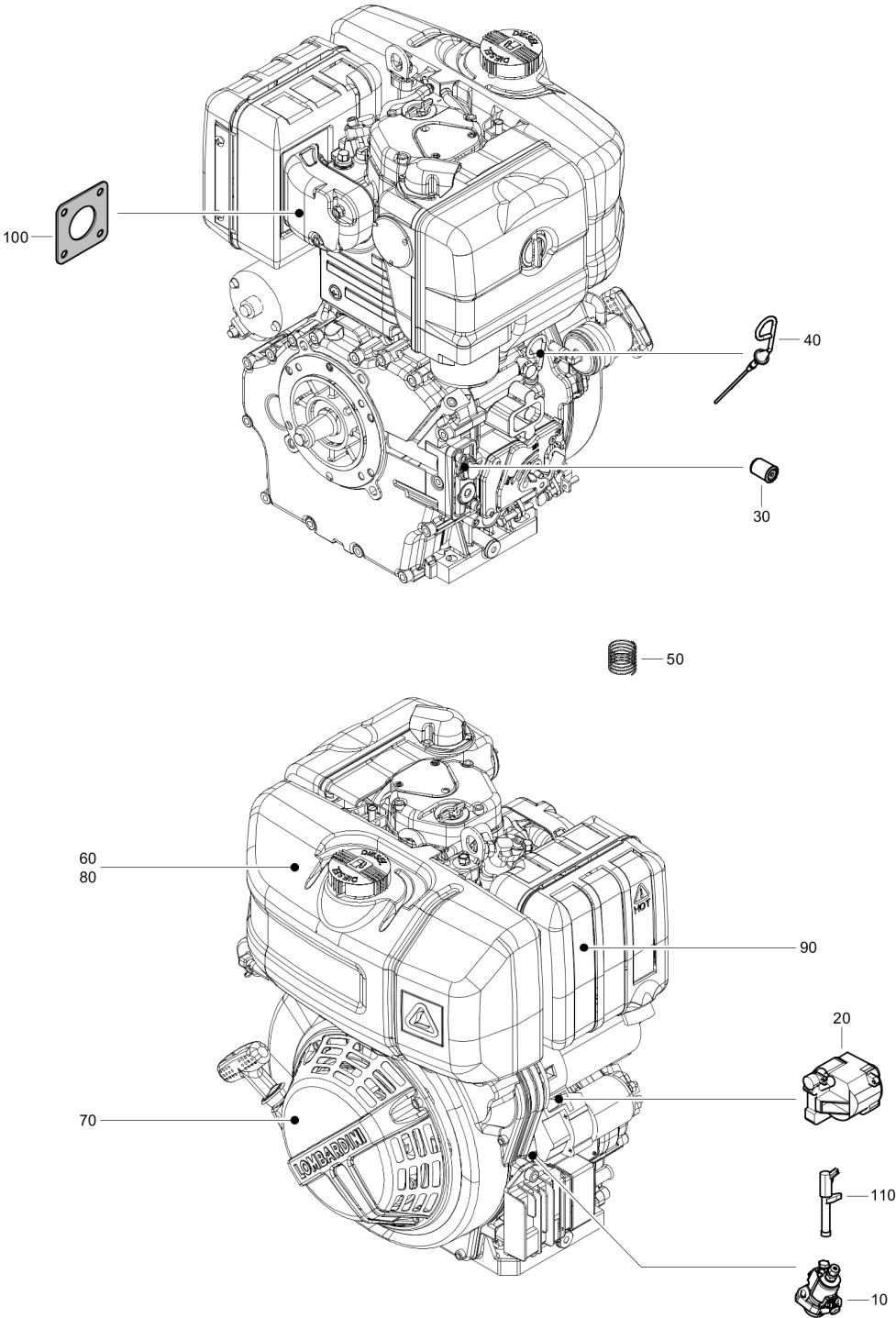
Service 4810061523\_00 Seal kit





| Item | Part No.   | Name                     | Qty | L |
|------|------------|--------------------------|-----|---|
| -    | 4810061523 | Seal kit                 | 1   |   |
| 10   | 4810014364 | Set of gaskets           | 1   |   |
| 20   | 4810008898 | Mechanical seal assembly | 1   |   |

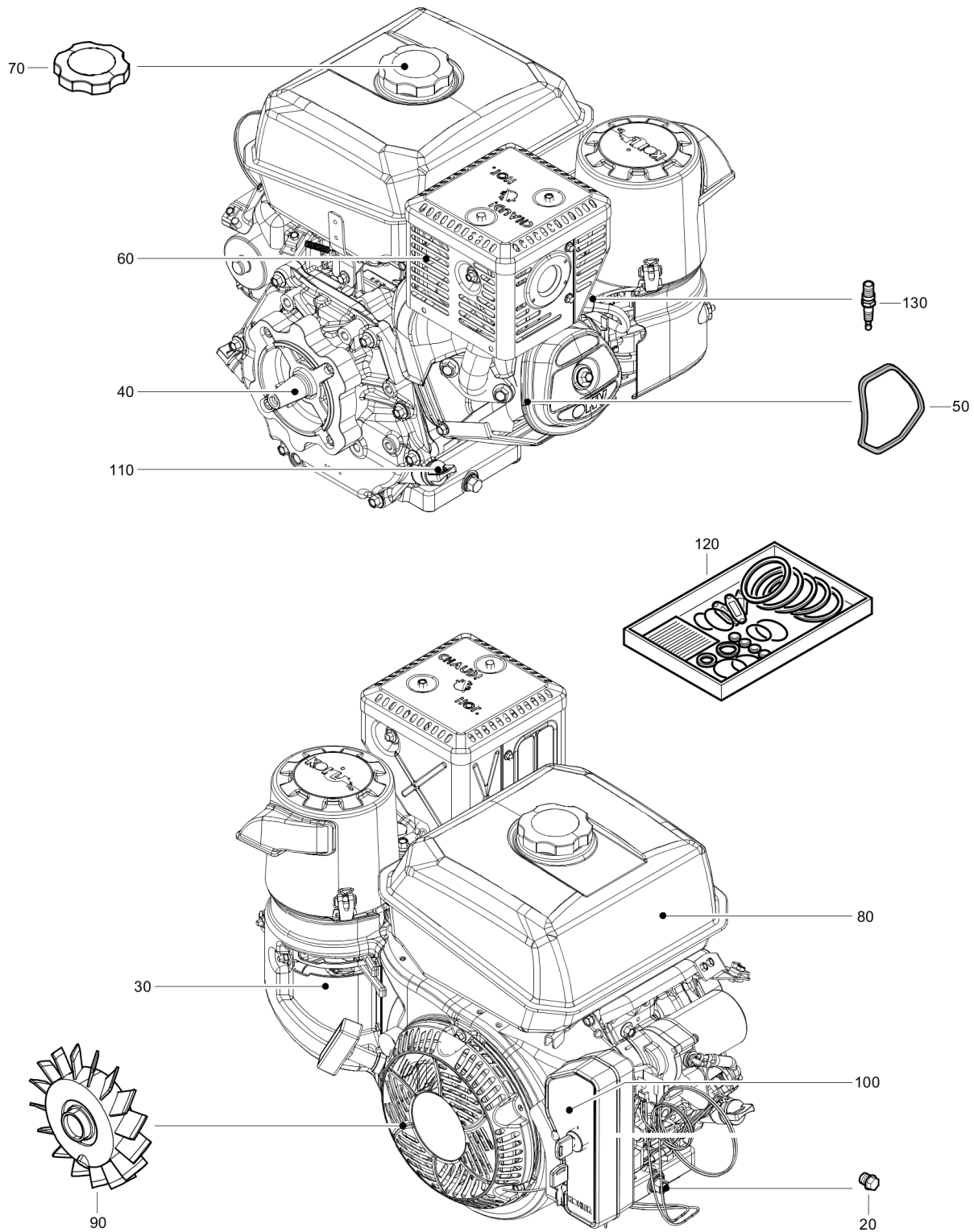
Engine Engine Spare Parts - 15LD440



Refer to Parts Online for the most up to date information. The printed information might be outdated.

Tue May 12 11:30:13 UTC 2020

| Item | Part No.   | Name                      | Qty | L |
|------|------------|---------------------------|-----|---|
| 10   | 4810060641 | Injector pump             | 1   |   |
| 20   | 4810060645 | Oil pump                  | 1   |   |
| 30   | 3382100049 | Oil filter internal       | 1   |   |
| 40   | 4810060603 | Dipstick                  | 1   |   |
| 50   | 4810060631 | Oil pressure valve spring | 1   |   |
| 60   | 4810060671 | Fuel tank                 | 1   |   |
| 70   | 4810062979 | Recoilstarter kit         | 1   |   |
| 80   | 4810070036 | Fuel tank                 | 1   |   |
| 90   | 4810070037 | Silencer                  | 1   |   |
| 100  | 4810070038 | Silencer gasket           | 1   |   |
| 110  | 4810070039 | Injector                  | 1   |   |

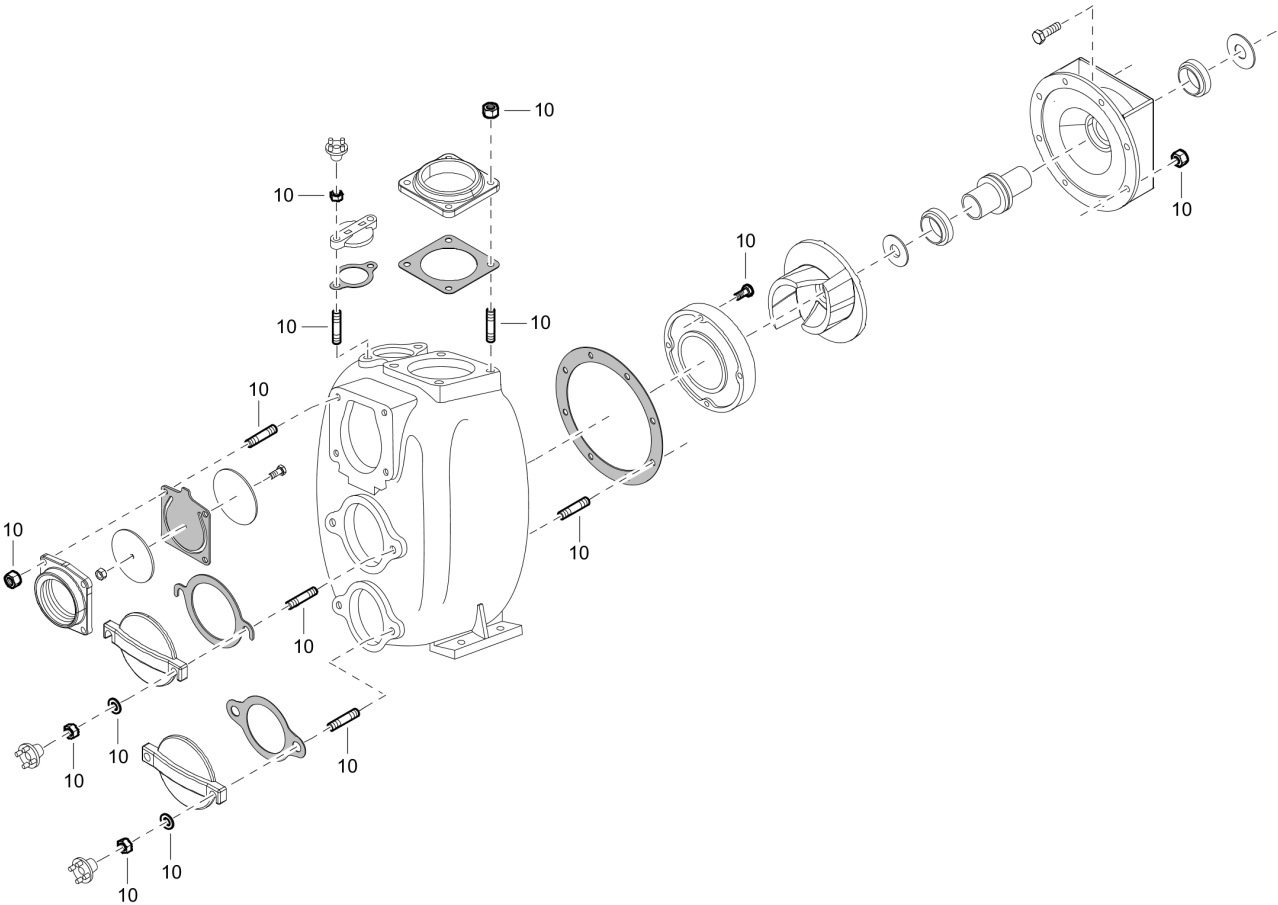
**Engine** Engine Spare Parts - CH440

Refer to Parts Online for the most up to date information. The printed information might be outdated.

Tue May 12 11:30:14 UTC 2020

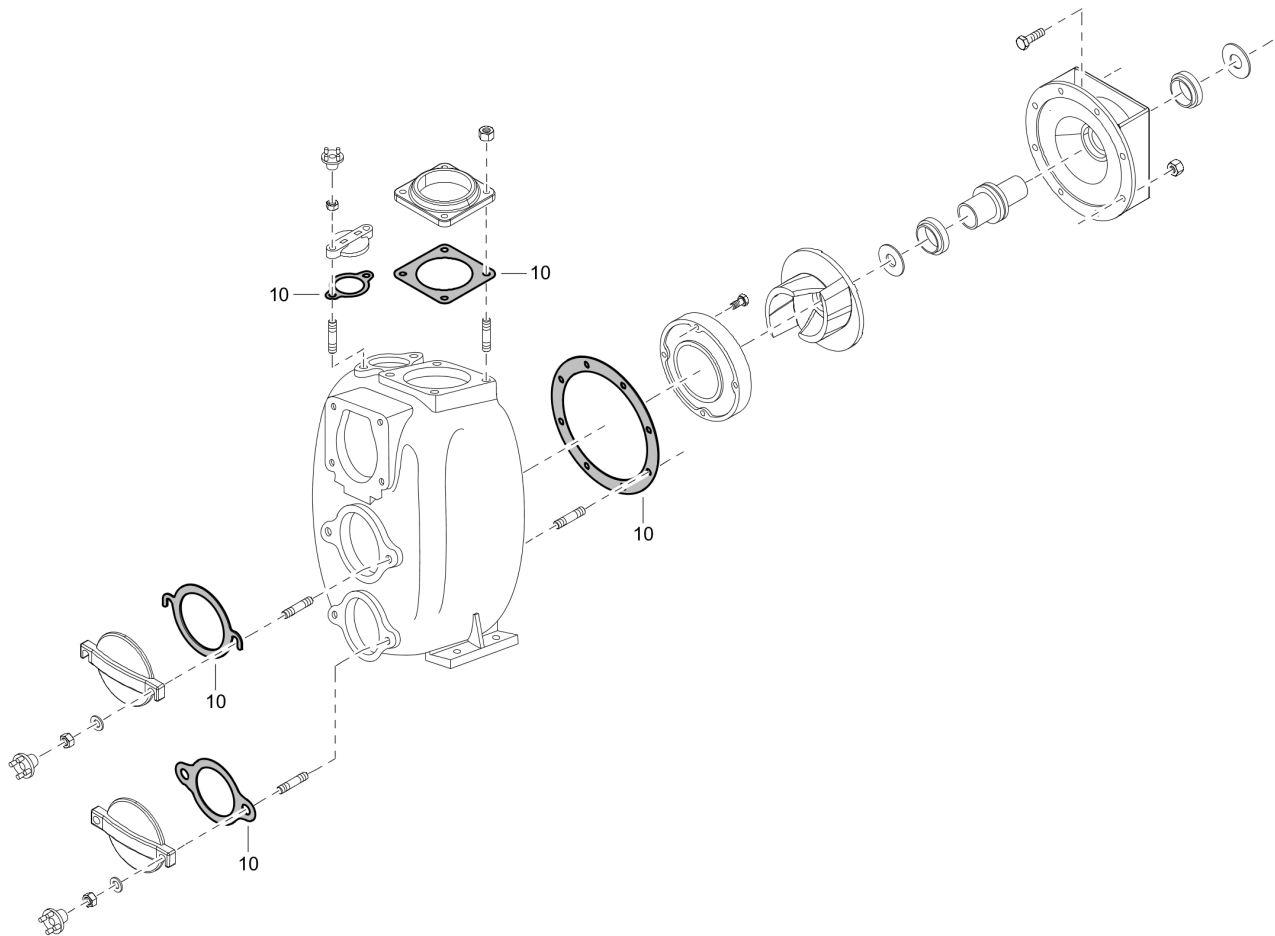
| Item | Part No.   | Name                         | Qty | L |
|------|------------|------------------------------|-----|---|
| 20   | 4810066469 | Drain plug                   | 1   |   |
| 30   | 4810067185 | Carburetor repair kit        | 1   |   |
| 40   | 4810067186 | Crankshaft assembly          | 1   |   |
| 50   | 4810067187 | Valve cover gasket           | 1   |   |
| 60   | 4810067188 | Muffler assembly/heat shield | 1   |   |
| 70   | 4810067189 | Cap                          | 1   |   |
| 80   | 4810067190 | Fuel tank assembly           | 1   |   |
| 90   | 4810067191 | Fan                          | 1   |   |
| 100  | 4810067192 | Oil sensor switch assembly   | 1   |   |
| 110  | 4810067193 | Dipstick assembly            | 1   |   |
| 120  | 4810067194 | Gasket set kit               | 1   |   |
| 130  | 4810066465 | Spark plug                   | 1   |   |

**Mechanical** 4810014363\_00 Set of screws



| Item | Part No.   | Name                 | Qty | L |
|------|------------|----------------------|-----|---|
| 10   | 4810014363 | Set of screws - Pump | 1   |   |
| -    | 4810001420 | Nut                  | 8   |   |
| -    | 4810001421 | Nut                  | 14  |   |
| -    | 4810001824 | Stud                 | 6   |   |
| -    | 4810001834 | Stud                 | 8   |   |
| -    | 4810001906 | Screw                | 3   |   |
| -    | 4810001836 | Stud                 | 8   |   |

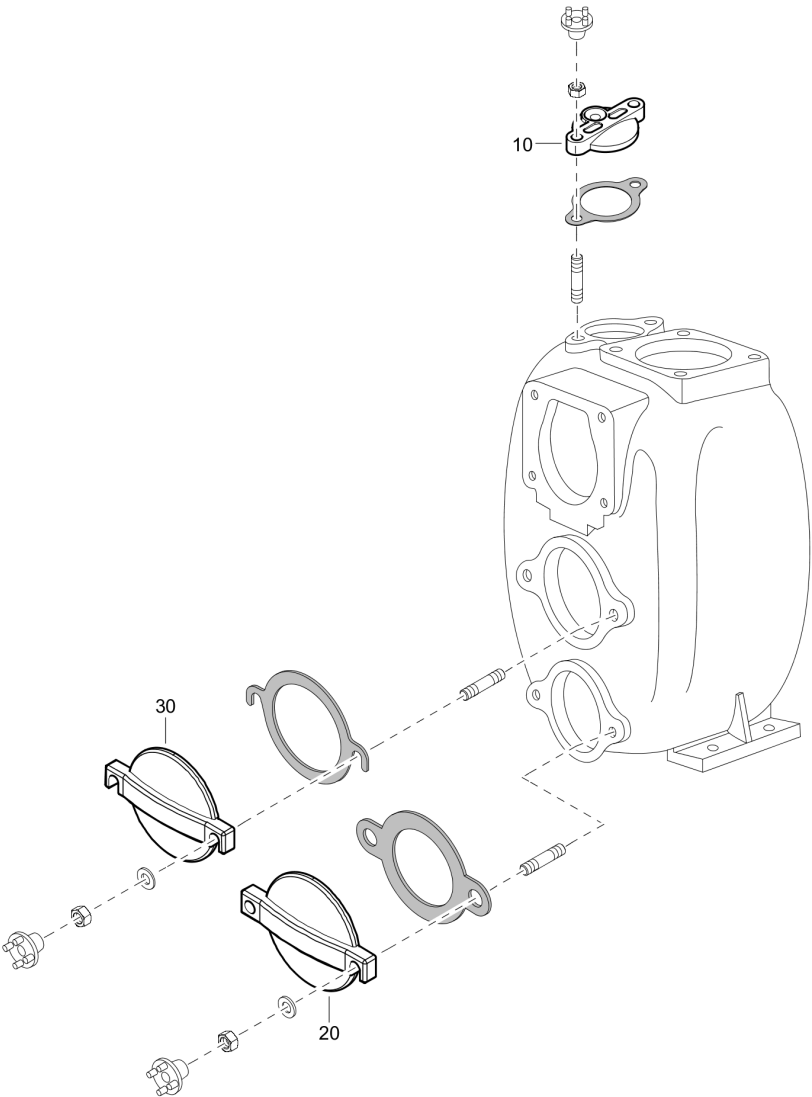
**Mechanical** 4810014364\_00 Set of gaskets





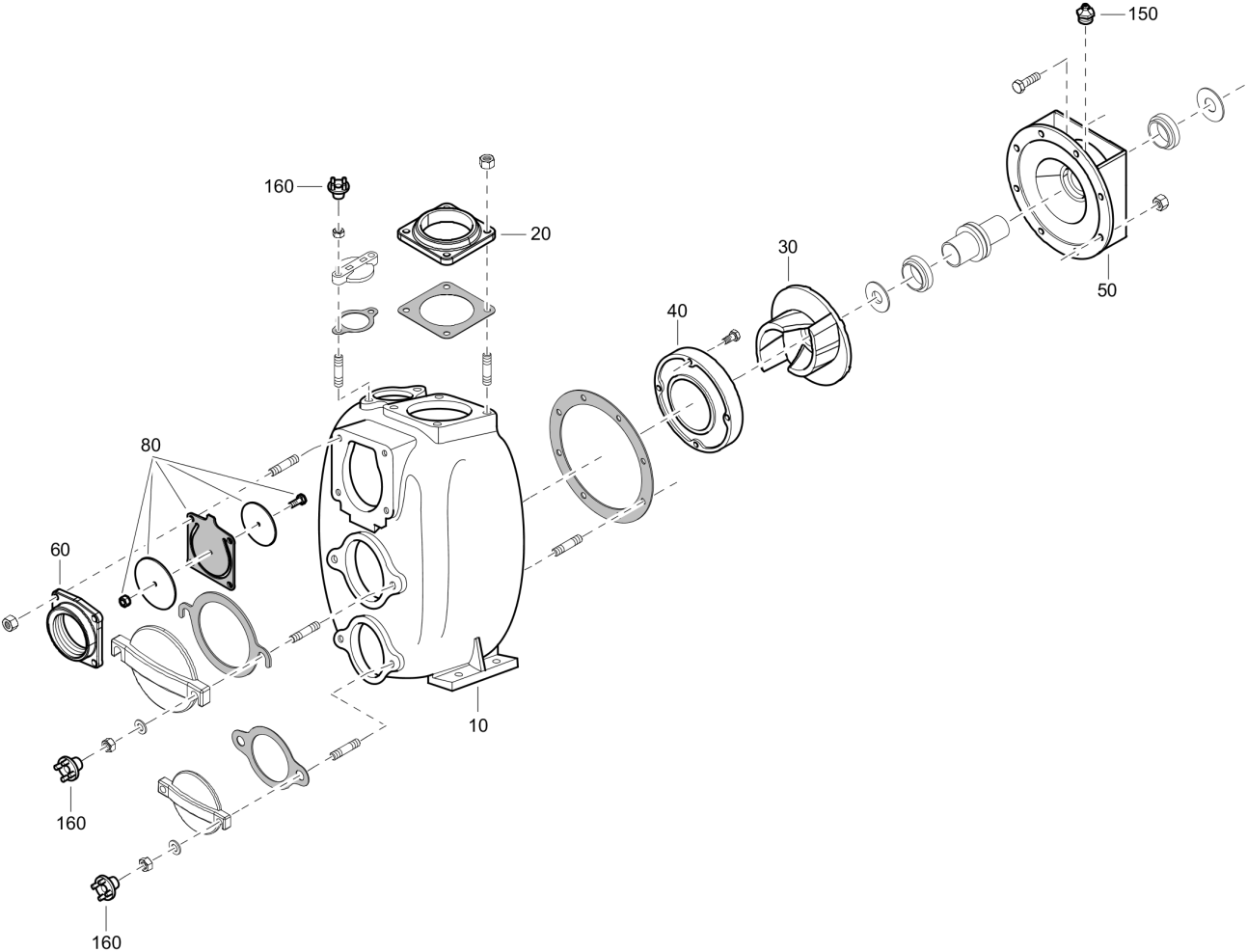
| Item | Part No.   | Name           | Qty | L |
|------|------------|----------------|-----|---|
| 10   | 4810014364 | Set of gaskets | 1   |   |
| -    | 4810005588 | Flange gasket  | 1   |   |
| -    | 4810005707 | Cover gasket   | 2   |   |
| -    | 4810005709 | Cover gasket   | 1   |   |
| -    | 4810005769 | Casing gasket  | 1   |   |
| -    | 4810005770 | Casing gasket  | 1   |   |

**Mechanical** 4810014124\_00 Set of cover



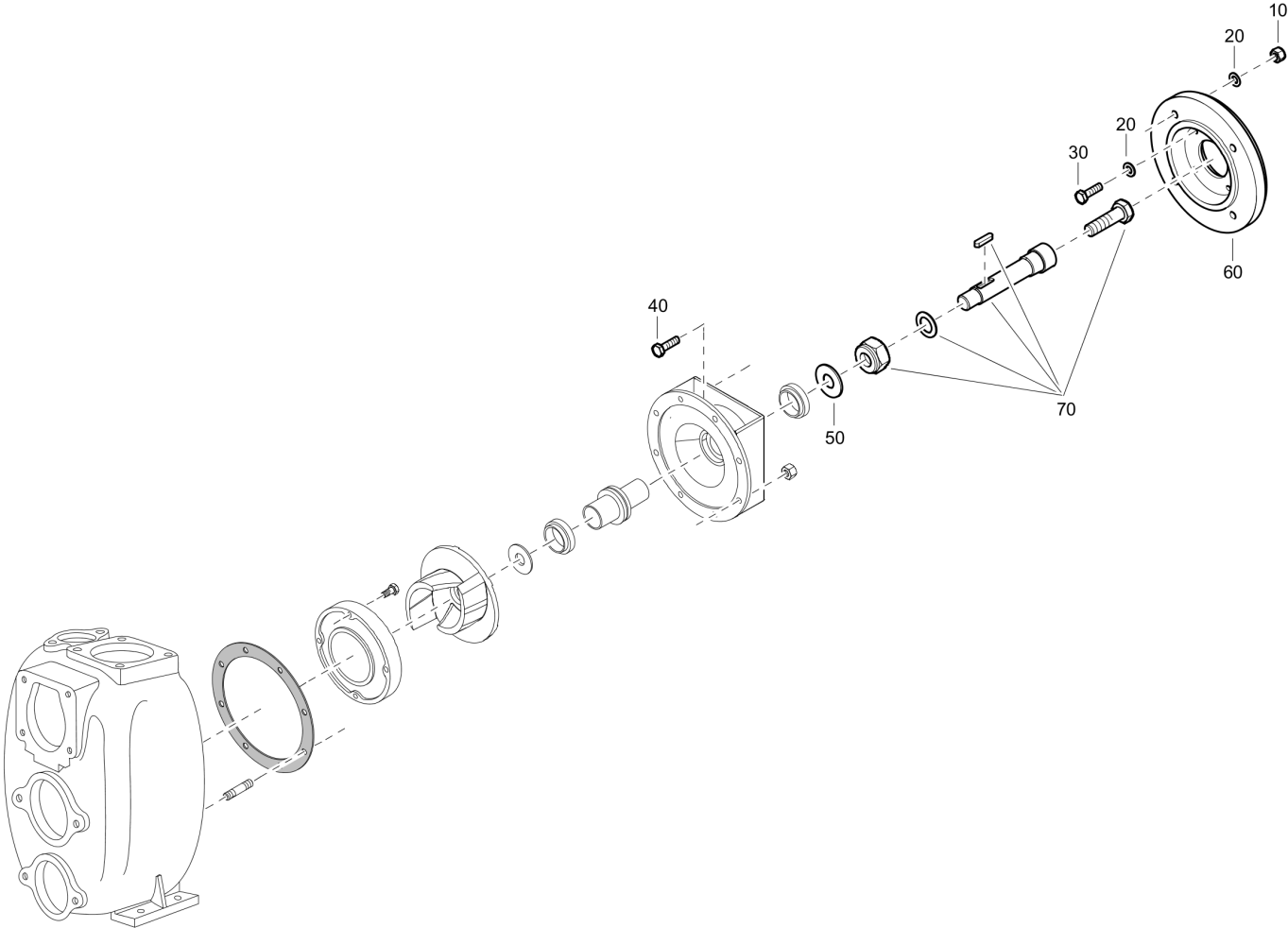
| Item | Part No.   | Name  | Qty | L |
|------|------------|-------|-----|---|
| 10   | 4810006473 | Cover | 1   |   |
| 20   | 4810006474 | Cover | 1   |   |
| 30   | 4810006475 | Cover | 1   |   |

**Mechanical** 4810017171\_00 Pump core



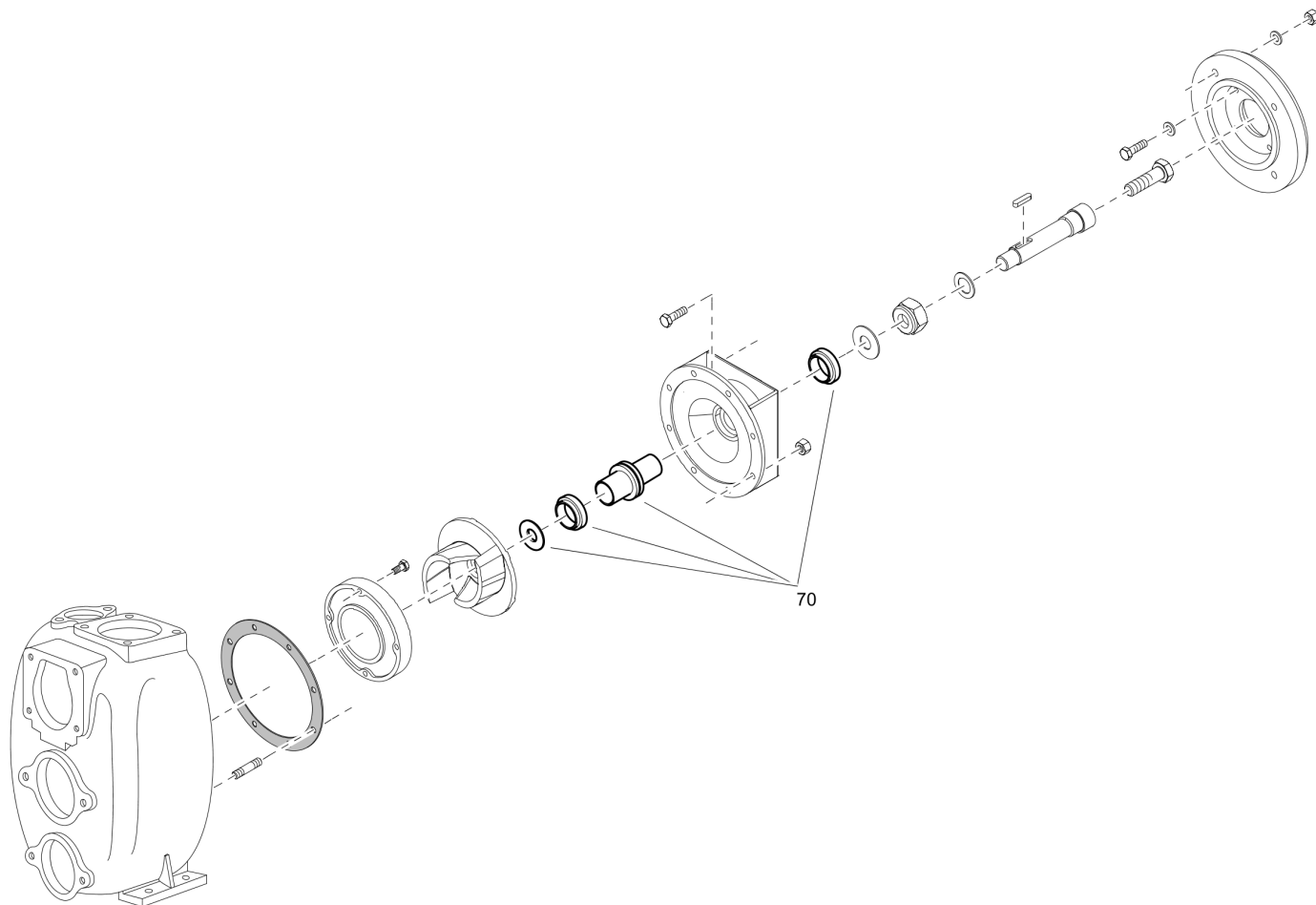
| Item | Part No.   | Name                 | Qty | L |
|------|------------|----------------------|-----|---|
| 10   | 4810004896 | Casing               | 1   |   |
| 20   | 4810005090 | Flange               | 1   |   |
| 30   | 4810005337 | Impeller             | 1   |   |
| 40   | 4810006096 | Wear plate           | 1   |   |
| 50   | 4810006342 | Head                 | 1   |   |
| 60   | 4810006422 | Suction flange       | 1   |   |
| 80   | 4810009019 | Check valve assembly | 1   |   |
| 150  | 4810001662 | Grease nipple        | 1   |   |
| 160  | 4810005771 | Wrench               | 6   |   |

**Mechanical** 4810014375\_00 Extension



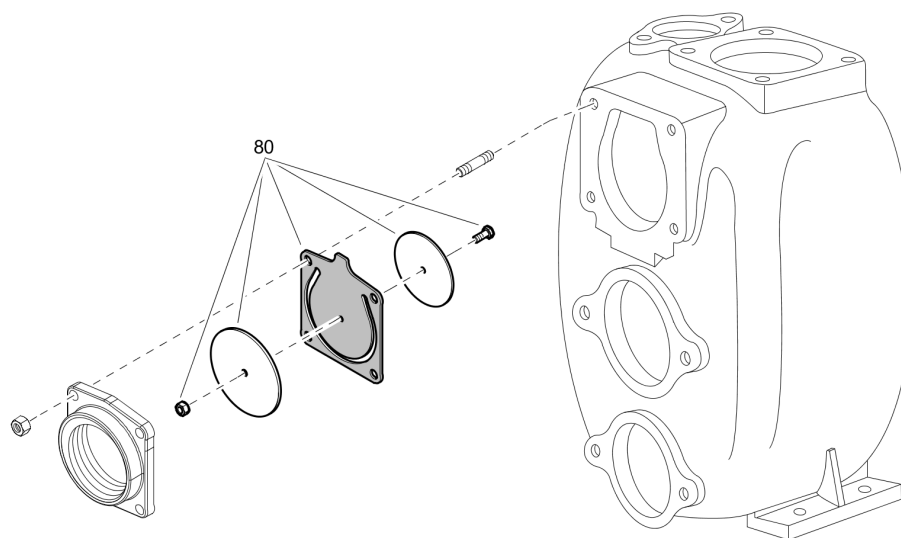
| Item | Part No.   | Name                    | Qty | L |
|------|------------|-------------------------|-----|---|
| 10   | 4810001420 | Nut                     | 4   |   |
| 20   | 4810001679 | Washer                  | 10  |   |
| 30   | 4810001938 | Screw                   | 6   |   |
| 40   | 4810001940 | Screw                   | 4   |   |
| 50   | 4810004139 | Water deflector         | 1   |   |
| 60   | 4810004399 | Coupling flange         | 1   |   |
| 70   | 4810014374 | Complete shaft assembly | 1   |   |

**Mechanical** 4810008898\_00 Mechanical seal assembly

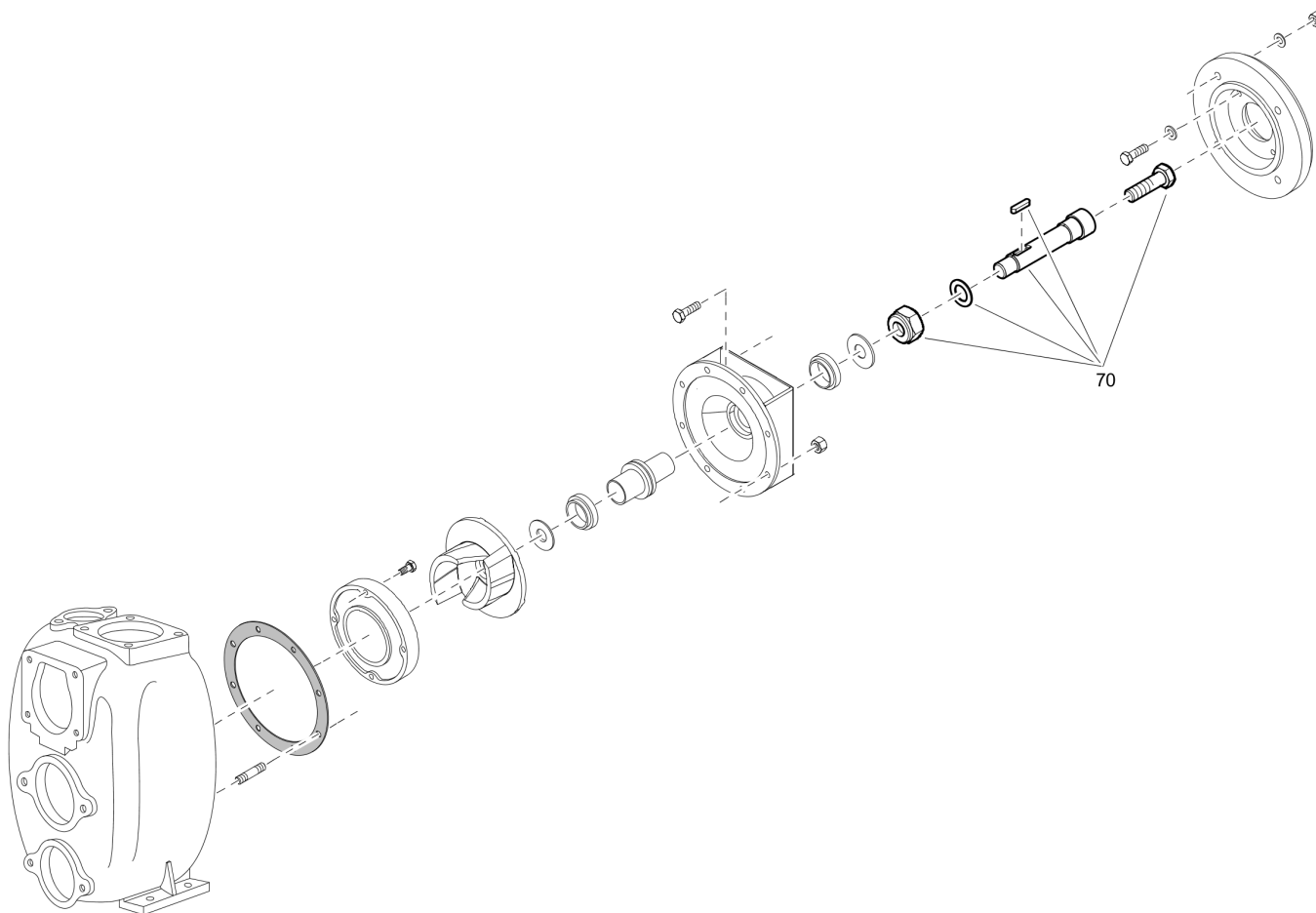




| Item | Part No.   | Name                     | Qty | L |
|------|------------|--------------------------|-----|---|
| 70   | 4810008898 | Mechanical seal assembly | 1   |   |

**Mechanical** 4810009019\_00 Check valve assembly

| Item | Part No.   | Name                 | Qty | L |
|------|------------|----------------------|-----|---|
| 80   | 4810009019 | Check valve assembly | 1   |   |

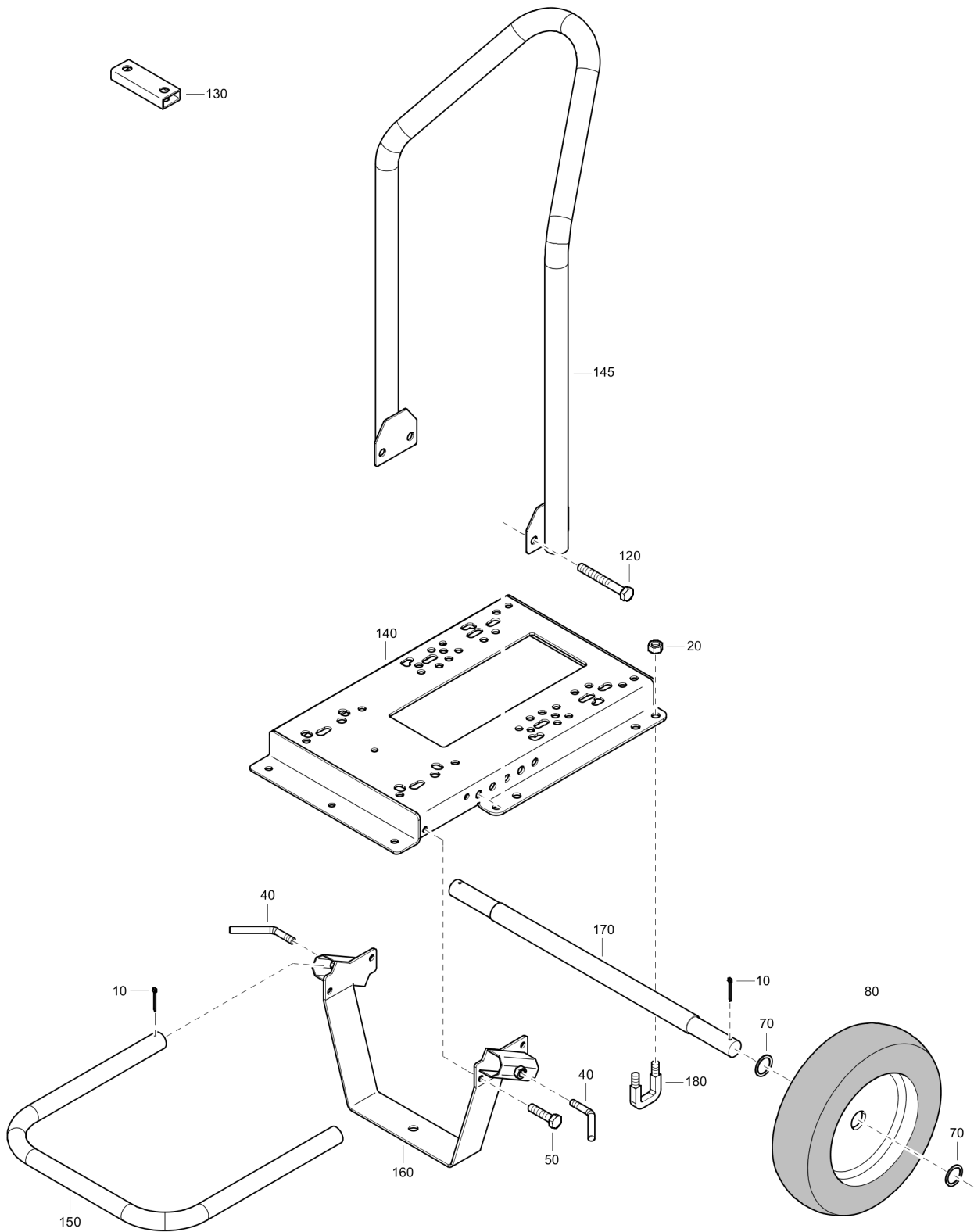
**Mechanical** 4810014374\_00 Complete shaft assembly

Refer to Parts Online for the most up to date information. The printed information might be outdated.

Tue May 12 11:30:23 UTC 2020

| Item | Part No.   | Name                    | Qty | L |
|------|------------|-------------------------|-----|---|
| 70   | 4810020903 | Complete shaft assembly | 1   |   |

**Mechanical** 4810007833\_00 Frame assembly - 15LD440

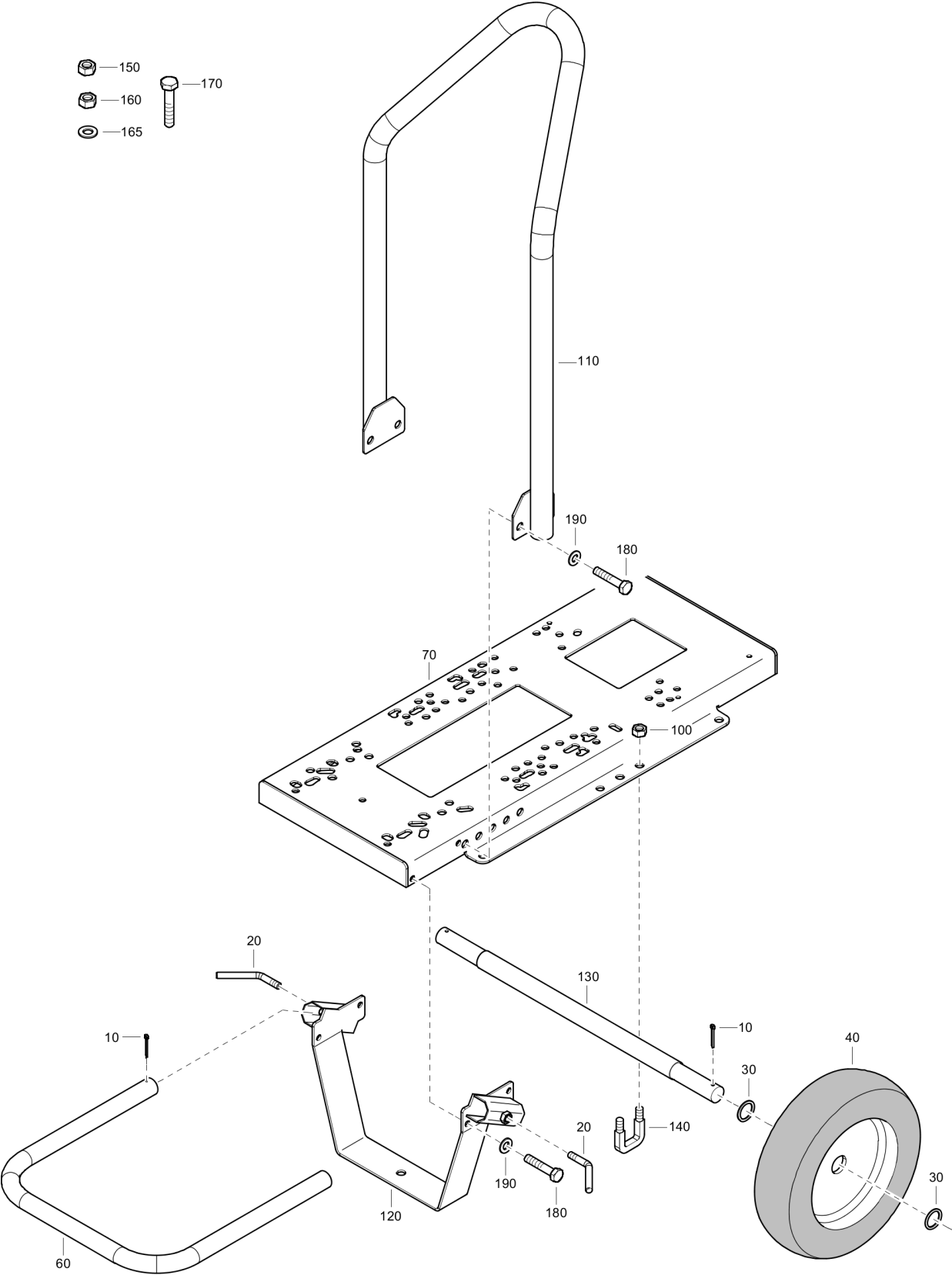


Refer to Parts Online for the most up to date information. The printed information might be outdated.

Tue May 12 11:30:24 UTC 2020

| Item | Part No.   | Name        | Qty | L |
|------|------------|-------------|-----|---|
| 10   | 4810001330 | Pin         | 3   |   |
| 20   | 4810001454 | Nut         | 8   |   |
| 40   | 4810001640 | Handle      | 2   |   |
| 50   | 4810001950 | Screw       | 4   |   |
| 70   | 4810002879 | Washer      | 4   |   |
| 80   | 4810002881 | Wheel       | 2   |   |
| 120  | 4810001953 | Screw       | 4   |   |
| 130  | 4810044632 | Bracket     | 1   |   |
| 140  | 4810057459 | Frame       | 1   |   |
| 145  | 4810057462 | Lifting eye | 1   |   |
| 150  | 4810057463 | Handle      | 1   |   |
| 160  | 4810057461 | Foot        | 1   |   |
| 170  | 4810007048 | Axle        | 1   |   |
| 180  | 4810056726 | Hook        | 2   |   |

**Mechanical** 4810063350\_00 Frame assembly - CH440

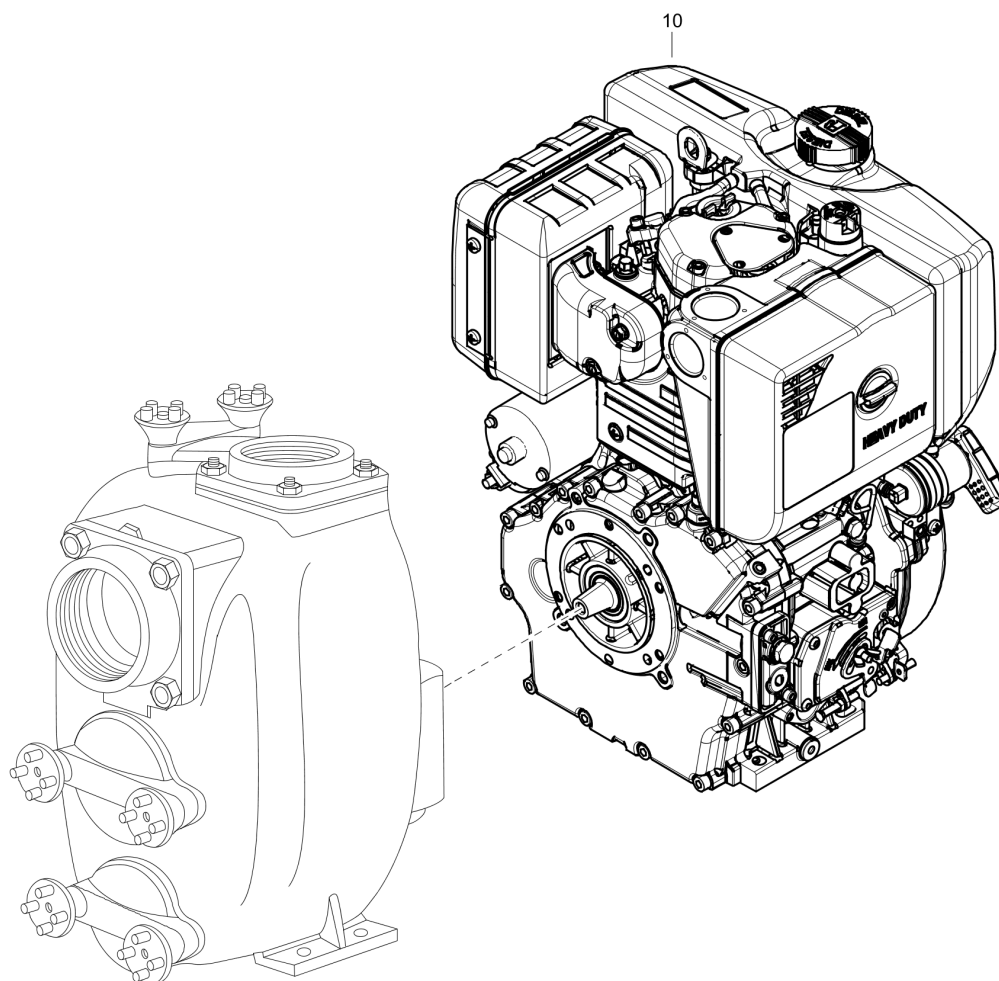


Refer to Parts Online for the most up to date information. The printed information might be outdated.

Tue May 12 11:30:25 UTC 2020



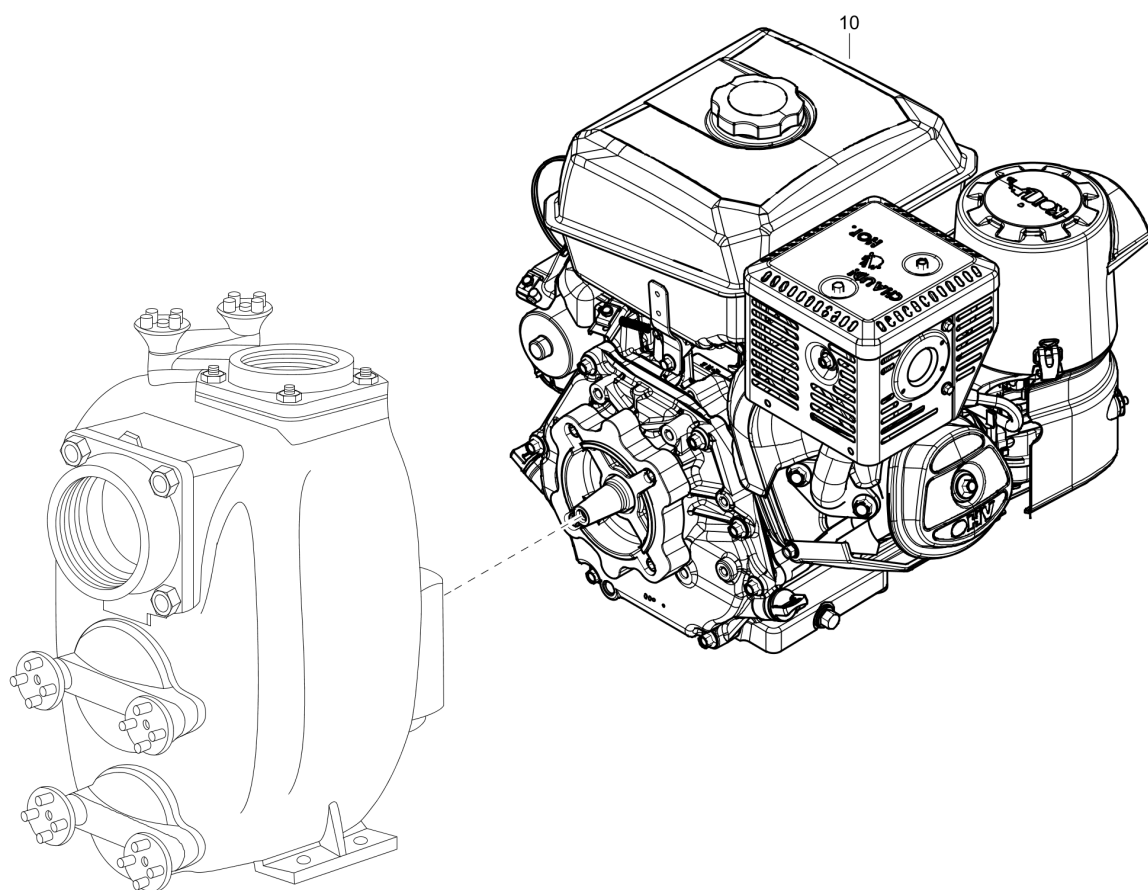
| Item | Part No.   | Name        | Qty | L |
|------|------------|-------------|-----|---|
| 10   | 4810001330 | Pin         | 3   |   |
| 20   | 4810001640 | Handle      | 2   |   |
| 30   | 4810002879 | Washer      | 4   |   |
| 40   | 4810002881 | Wheel       | 2   |   |
| 60   | 4810057463 | Handle      | 1   |   |
| 70   | 4810060749 | Frame       | 1   |   |
| 100  | 4810001454 | Nut         | 8   |   |
| 110  | 4810057462 | Lifting eye | 1   |   |
| 120  | 4810057461 | Foot        | 1   |   |
| 130  | 4810007048 | Axle        | 1   |   |
| 140  | 4810056726 | Hook        | 2   |   |
| 150  | 4810001455 | Nut         | 4   |   |
| 160  | 4810001422 | Nut         | 1   |   |
| 165  | 4810001699 | Washer      | 4   |   |
| 170  | 4810002002 | Screw       | 1   |   |
| 180  | 4810001952 | Screw       | 8   |   |
| 190  | 4810001691 | Washer      | 24  |   |

**Mechanical** 4810058781\_00 Complete engine assembly - 15LD440

Refer to Parts Online for the most up to date information. The printed information might be outdated.

Tue May 12 11:30:26 UTC 2020

| Item | Part No.   | Name   | Qty | L |
|------|------------|--------|-----|---|
| 10   | 4810031431 | Engine | 1   |   |

**Mechanical** 4810063349\_00 Complete engine assembly - CH440

Refer to Parts Online for the most up to date information. The printed information might be outdated.

Tue May 12 11:30:27 UTC 2020

| Item | Part No.   | Name   | Qty | L |
|------|------------|--------|-----|---|
| 10   | 4810049582 | Engine | 1   |   |

Any unauthorized use or copying of the contents or any part thereof is prohibited.  
This applies in particular to trademarks, model denominations, part numbers, and  
drawings.

