

# LB 80 B-D

---



## **Spare Parts List** **Self Priming Diaphragm Pump**

LB 80 B-D s/n ITH 0000001 -

Engine: GX160 / 15LD225



# General information

This spare parts list applies to the following:

Part number	Description
8381060020	LB 80 B GX160
8381060021	LB 80 D 15LD225

Use only authorized parts. Any damage or malfunction caused by the use of unauthorized parts is not covered by Warranty or Product Liability. Any unauthorized use or copying of the contents or any part thereof is prohibited. This applies in particular to trademarks, model denominations, part numbers, and drawings.

## Instructions for use

This spare parts list contains no safety regulations and is merely intended to assist in the ordering of spare parts.

For information about operating, servicing, or repairing, the relevant Safety and operating instructions must be consulted at all costs.

Please observe the safety instructions listed in the relevant Safety and operating instructions!

Kits and consumables - 8381060020 - GX160	1
Kits and consumables - 8381060021 - 15LD225	3

## Service

4810061341_00 Service Pak 300 Hr - 8381060020 - GX160	5
4810062756_00 Service Pak 500 Hr - 8381060021 - 15LD225	7

## Engine

Engine Spare Parts - GX160	9
Engine Spare Parts - 15LD225	13

## Mechanical

Aluminium gear box at helical teeth	15
Self lubricated connecting rod and diaphragm	19
Pump case with threaded suction/delivery branches and air chamber	21
Trailer wraparound for diesel engine with pneumatic wheels	23
Trailer wraparound for petrol engine or electric motor with pneumatic wheels	25

## Kits and consumables - 8381060020 - GX160

LB 80 B - GX160			Change interval/quantity		
Kits/consumables	Item number	Description	100 Hr	300 Hr	When needed
Maintenance kit	1	Service Pak 300 Hr		1	
Engine oil Change every 100 Hr or 6 months	2	Can Paroil E 5 Liter/1.32 Gallon	0.6 Liter 0.15 Gallon	0.6 Liter 0.15 Gallon	
	3	Can Paroil E 20 Liter/5.3 Gallon			
	4	Can Paroil E 210 Liter/55.5 Gallon			
Repair kit	5	Gear box assembly			1
	6	Diaphragm assembly			1

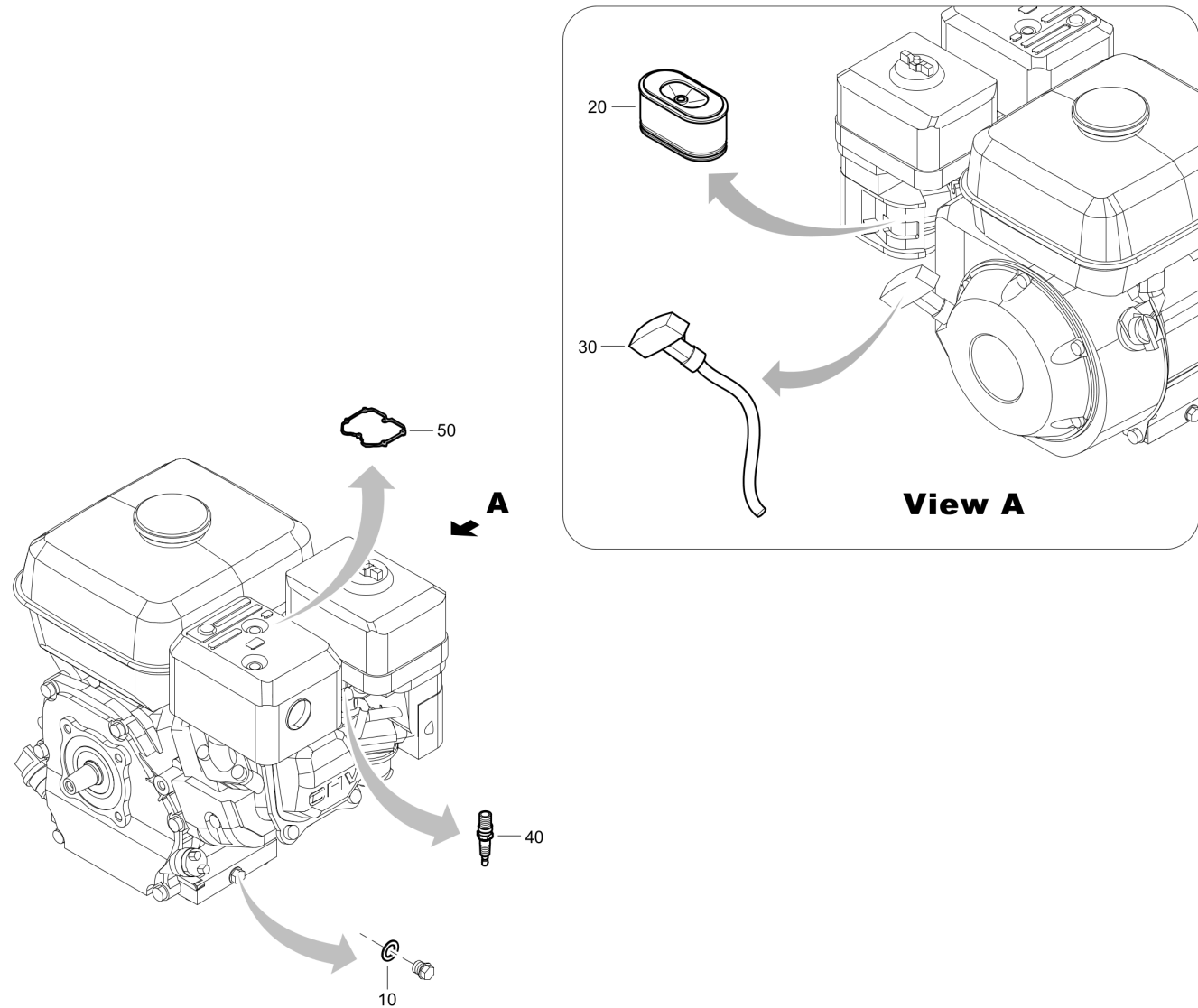
Item	Part No.	Name	Qty	L
1	4810061341	Service Pak 500 Hr	1	
2	1615595300	Can Paroil E 5 Liter/1.32 Gallon	1	
3	1615595400	Can Paroil E 20 Liter/5.3 Gallon	1	
4	1615595500	Barrel Paroil E 210 Liter/55.5 Gallon	1	
5	4810060138	Gear box assembly	1	
6	4810060149	Diaphragm assembly	1	

## Kits and consumables - 8381060021 - 15LD225

LB 80 D - 15LD225		Change interval/quantity		
Kits/consumables	Item number	Description	500 Hr	When needed
Maintenance kit	1	Service Pak 500 Hr	1	
Engine oil Change every 500 Hr or 6 months	2	Can Paroil E 5 Liter/1.32 Gallon	0.9 Liter 0.23 Gallon	
	3	Can Paroil E 20 Liter/5.3 Gallon		
	4	Can Paroil E 210 Liter/55.5 Gallon		
Repair kit	5	Gear box assembly		1
	6	Diaphragm assembly		1

Item	Part No.	Name	Qty	L
1	4810062756	Service Pak 500 Hr	1	
2	1615595300	Can Paroil E 5 Liter/1.32 Gallon	1	
3	1615595400	Can Paroil E 20 Liter/5.3 Gallon	1	
4	1615595500	Barrel Paroil E 210 Liter/55.5 Gallon	1	
5	4810060138	Gear box assembly	1	
6	4810060149	Diaphragm assembly	1	

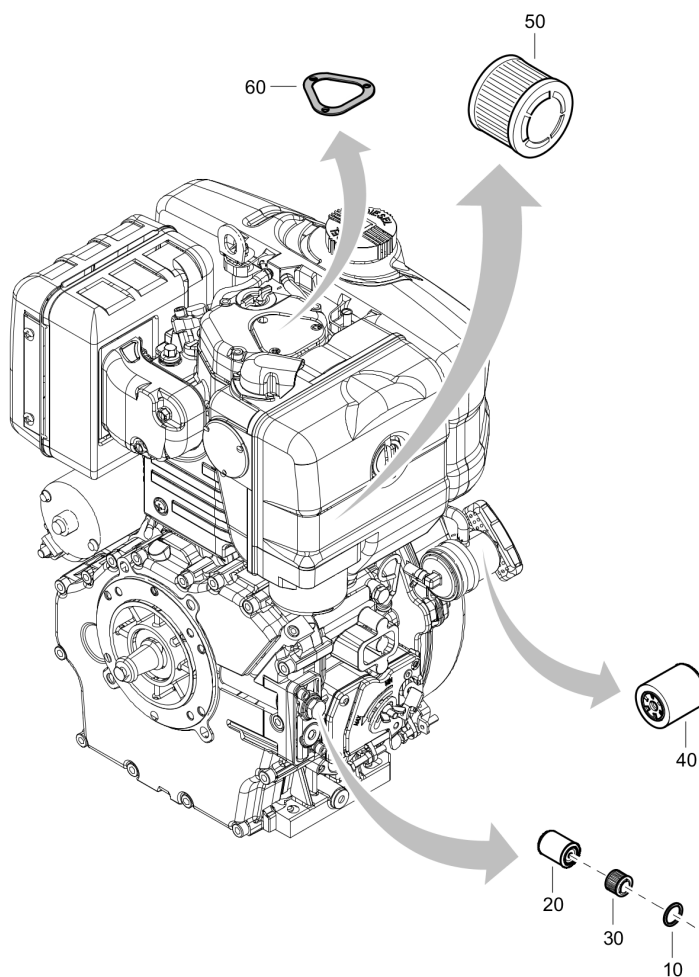
**Service** 4810061341\_00 Service Pak 300 Hr - 8381060020 - GX160





Item	Part No.	Name	Qty	L
-	4810061341	Service Pak 500 Hr	1	
10	-	Oil plug gasket	2	
20	-	Air filter complete	1	
30	-	Starter rope	1	
40	-	Spark plug	1	
50	-	Gasket	1	

**Service** 4810062756\_00 Service Pak 500 Hr - 8381060021 - 15LD225



Refer to Parts Online for the most up to date information. The printed information might be outdated.

Tue May 12 11:21:19 UTC 2020

Item	Part No.	Name	Qty	L
-	4810062756	Service Pak 500 Hr	1	
10	-	Oil filling gasket	1	
20	-	Oil filter cartridge	1	
30	-	Oil filter	1	
40	-	Fuel filter cartridge	1	
50	-	Air filter cartridge	1	
60	-	Gasket	1	

**Engine** Engine Spare Parts - GX160

NO EXPLODED VIEW  
AVAILABLE  
FOR THIS BOM

Item	Part No.	Name	Qty	L
10	1636301953	Engine switch	1	
20	1636301956	Oil dipstick complete	1	
30	3382015118	Spring	1	
40	3382015119	Handle	1	
50	3382015199	Oil plug	2	
60	3382100168	Gasket	1	
70	3382100170	Friction washer	1	
80	3382100175	Friction spring	1	
90	3382100177	Adjustment screw	1	
95	4700238303	Oil plug gasket	2	
100	4700239685	Cover	1	
110	4700239771	Nut	2	
120	4700239772	Grommet	1	
125	4700361242	Spark plug	1	
130	4700937048	Gasket	1	
140	4700938147	Gasket	1	
150	4700939659	Spacer	1	
155	4700238301	Gasket	1	
160	4810061322	Recoil starter complete	1	
170	4810031323	Housing	1	
180	4810031324	Reel	1	
190	4810031325	Ratchet	2	
200	4810031326	Guide	1	
210	4810031327	Spring return	2	
215	4810031328	Starter rope	1	
220	4810031329	Carburetor	1	
230	4810031330	Air filter housing	1	
235	4810031331	Air filter complete	1	
240	4810031332	Silencer	1	
250	4810031333	Muffler cover	1	
260	4810031334	Muffler gasket	1	
270	4810031335	Fuel tank	1	
280	4810031336	Fuel cap	1	
290	4810031338	Valve cover	1	
300	4810031339	Oil dipstick gasket	1	

Refer to Parts Online for the most up to date information. The printed information might be outdated.

Tue May 12 11:21:20 UTC 2020

This page intentionally left blank

Item	Part No.	Name	Qty	L
310	4810031340	Oil filler cap complete	1	

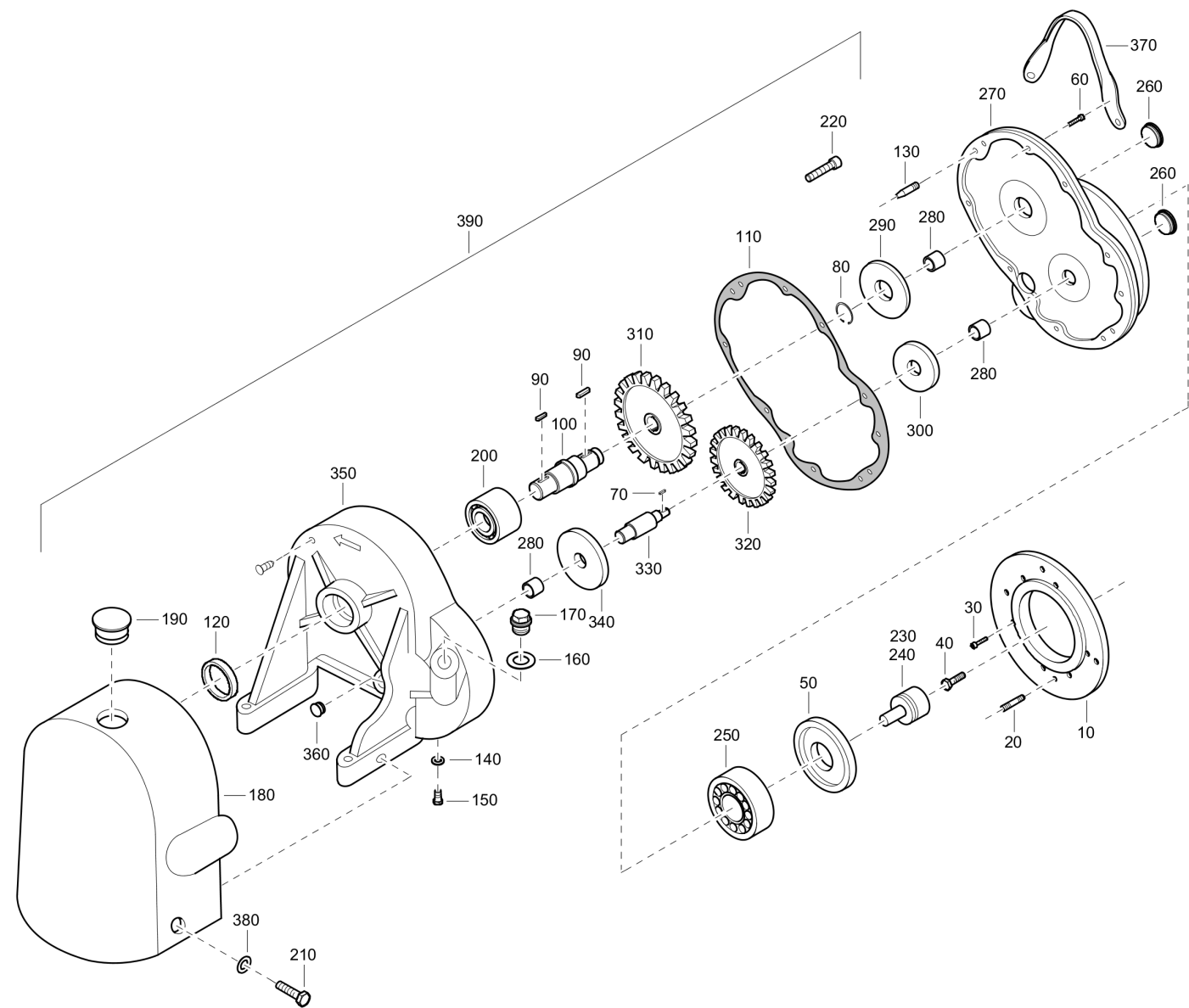
**Engine** Engine Spare Parts - 15LD225

NO EXPLODED VIEW  
AVAILABLE  
FOR THIS BOM



Item	Part No.	Name	Qty	L
10	4810060645	Oil pump	1	
20	4810062976	Dipstick	1	
30	4810062977	Fuel tank	1	
40	4810062978	Injector	1	
50	4810062979	Recoilstarter kit	1	
60	4810061761	Handle	1	
70	4810062980	Muffler	1	
75	3382100051	Cover gasket	1	
78	4810060601	Oil filling gasket	1	
80	4810062981	Oil plug gasket	1	
90	4810062982	Injection pump	1	
100	4810062983	Oil refilling cap	1	
110	4810062984	Exhaust gasket	1	

**Mechanical** Aluminium gear box at helical teeth



Refer to Parts Online for the most up to date information. The printed information might be outdated.

Tue May 12 11:21:22 UTC 2020

Item	Part No.	Name	Qty	L
10	4810016765	Adapter	1	
20	4810060109	Stud	4	
30	4810060110	Capscrew	6	
40	4810060111	Bolt	1	
50	4810060114	Oil seal ring	1	
60	4810060115	Capscrew	10	
70	4810060116	Key	1	
80	4810060117	Seeger ring	1	
90	4810055301	Key	2	
100	4810060154	Shaft	1	
110	4810056489	Gasket	1	
120	4810060118	Seal ring	1	
130	4810060119	Dowel pin	2	
140	4810060120	Washer	1	
150	4810060121	Oil drain plug	1	
160	4810060123	Washer	1	
170	4810060124	Oil field plug	1	
180	4810004556	Plastic protection	1	
190	4810060125	Plug	1	
200	4810060126	Bearing	1	
210	4810060127	Screw	2	
220	4810060128	Bolt	1	
230	4810060131	Helical pinion	1	
240	4810016768	Helical pinion	1	
250	4810060129	Bearing	1	
260	4810012592	Plug	2	
270	4810012579	Helical Cover	1	
280	4810055302	Needle bushing	3	
290	4810012591	Washer	1	
300	4810012590	Washer	1	
310	4810055300	Helical driven shaft	1	
320	4810060132	Helical driven shaft	1	
330	4810060133	Shaft	1	
340	4810060134	Washer	1	
350	4810060135	Helical Carter gear box	1	

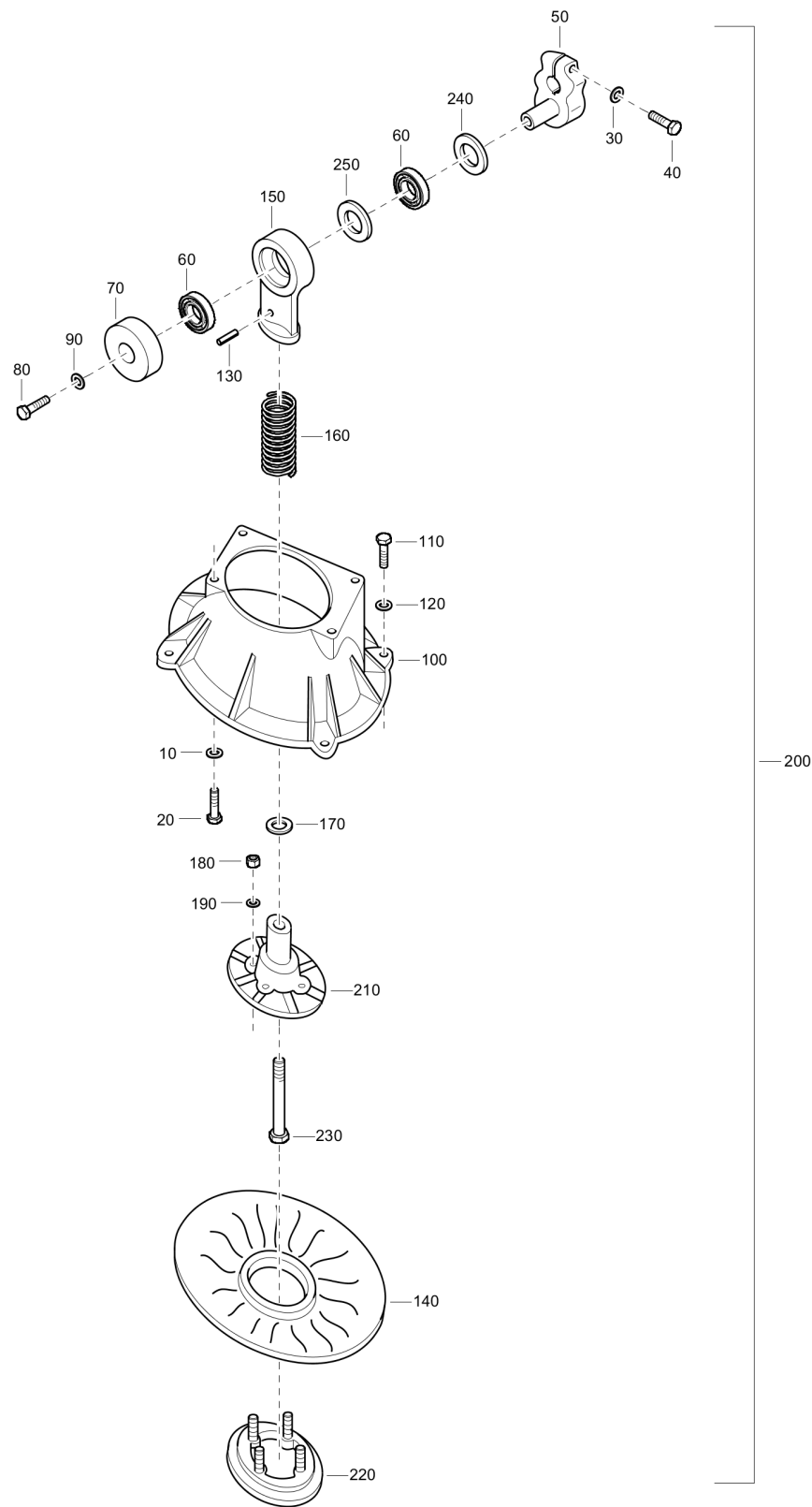
Refer to Parts Online for the most up to date information. The printed information might be outdated.

Tue May 12 11:21:22 UTC 2020

This page intentionally left blank

Item	Part No.	Name	Qty	L
360	4810012592	Plug	1	
370	4810060136	Lifting hook	1	
380	4810060137	Washer	2	
390	4810060138	Gear box assembly	1	

**Mechanical** Self lubricated connecting rod and diaphragm

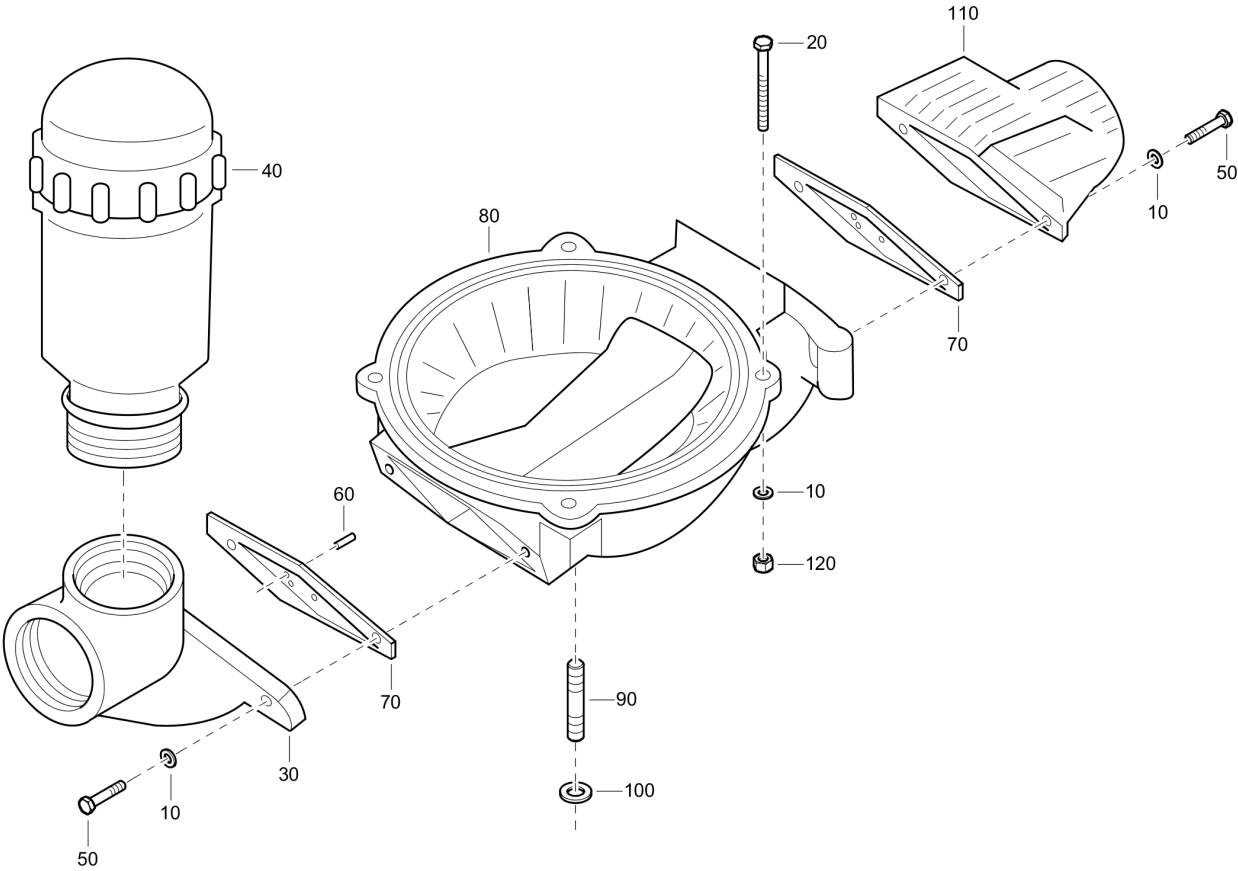


Refer to Parts Online for the most up to date information. The printed information might be outdated.

Tue May 12 11:21:23 UTC 2020

Item	Part No.	Name	Qty	L
10	4810060141	Washer	4	
20	4810060142	Bolt	4	
30	4810059239	Washer	1	
40	4810060144	Bolt	1	
50	4810004571	Crank	1	
60	4810058000	Connecting rod bearing	2	
70	4810058001	Connecting rod cover	1	
80	4810060145	Bolt	1	
90	4810059239	Washer	1	
100	4810004563	Mounting case aluminium	1	
110	4810060146	Bolt	4	
120	4810060141	Washer	4	
130	4810001774	Pin	1	
140	4810059353	Neoprene diaphragm	1	
150	4810060147	Big end	1	
160	4810053029	Spring	1	
170	4810058002	Internal ring	1	
180	4810060044	Nut	4	
190	4810060141	Washer	4	
200	4810060149	Diaphragm assembly	1	
210	4810058003	Small end	1	
220	4810004564	Diaphragm looking flange	1	
230	4810001985	Bolt	1	
240	4810058005	Spacer	1	
250	4810058006	Spacer	1	

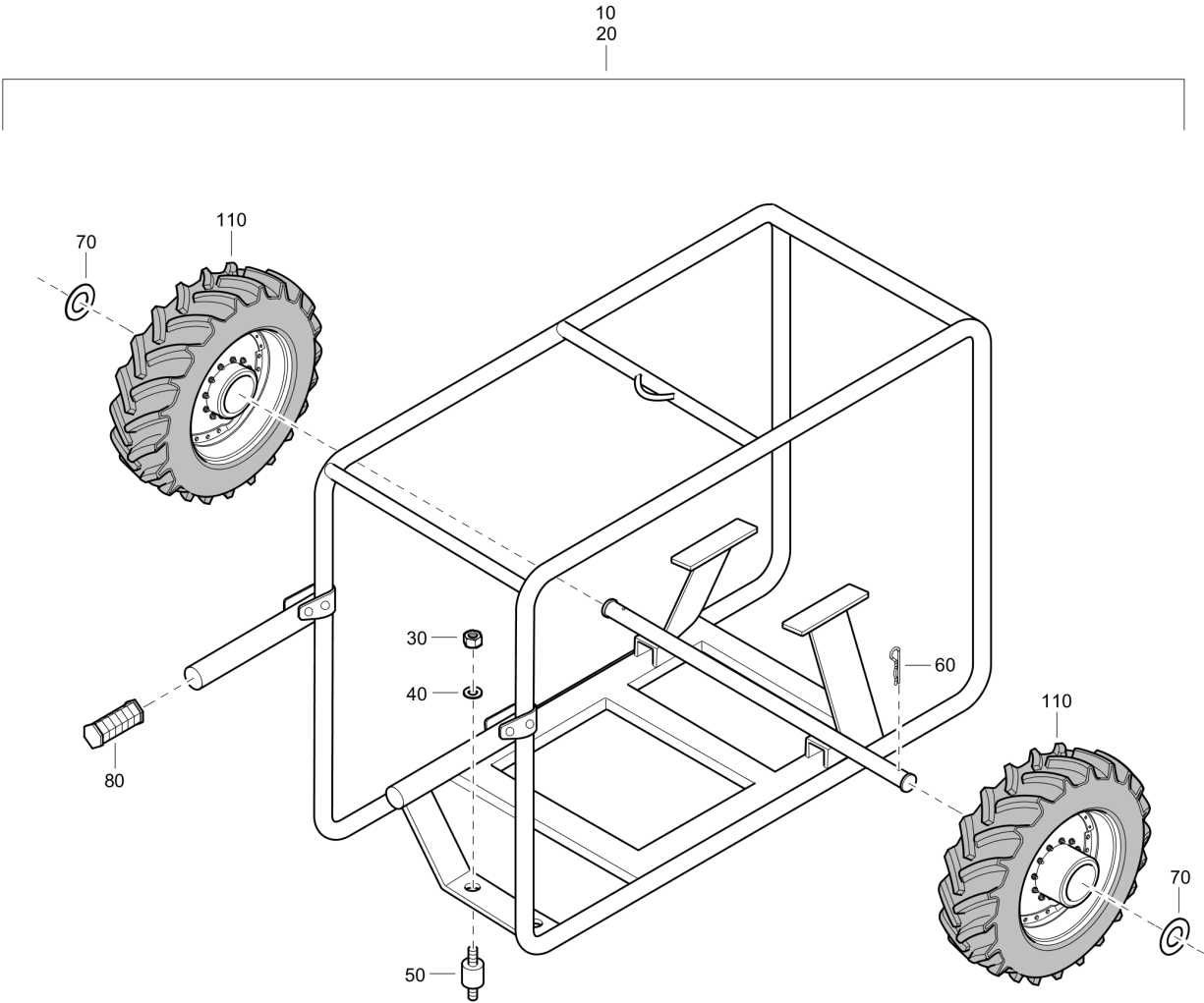
**Mechanical** Pump case with threaded suction/delivery branches and air chamber





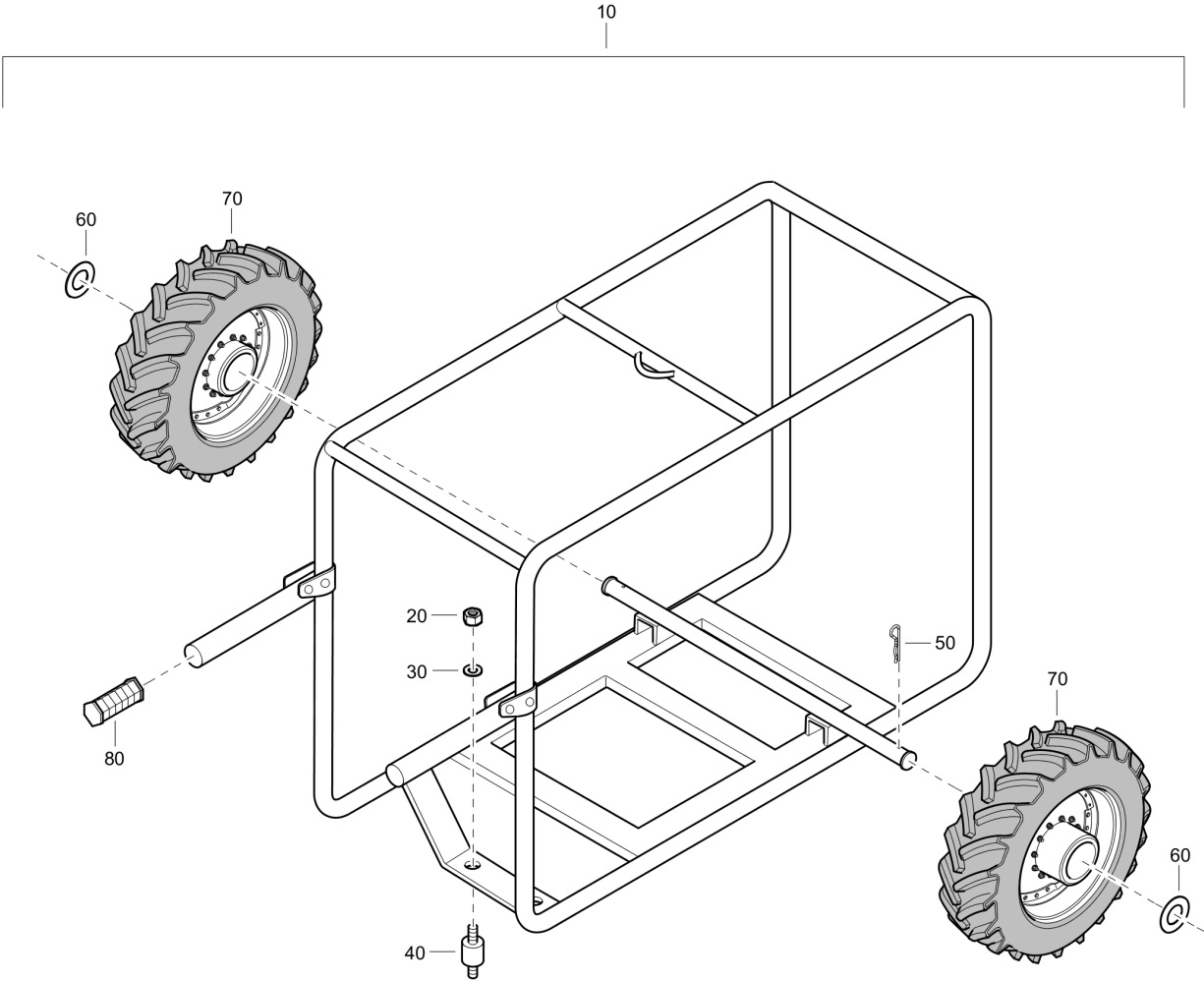
Item	Part No.	Name	Qty	L
10	4810060141	Washer	8	
20	4810060146	Bolt	4	
30	4810004557	Suction branch threaded	1	
40	4810004573	Polypropylene air chamber threaded	1	
50	4810060150	Bolt	4	
60	4810060151	Dowel pin	6	
70	4810059354	Suction/delivery valves neoprene	2	
80	4810004559	Pump case	1	
90	4810060152	Stud	1	
100	4810060141	Washer	1	
110	4810004558	Delivery branch threaded	1	
120	4810060153	Nut	4	

**Mechanical** Trailer wraparound for diesel engine with pneumatic wheels



Item	Part No.	Name	Qty	L
10	4810060292	Trailer wraparound assembly for HATZ 1B20	1	
20	4910060293	Trailer wraparound assembly for lombardini 15ld225	1	
30	4810060295	Washer	2	
40	4810060295	Washer	2	
50	4910060296	Shock absorber	2	
60	4910060297	Pin	2	
70	4910060298	Washer	2	
80	4810060299	Hand grip	2	
110	4810060304	Pneumatic wheel	2	

**Mechanical** Trailer wraparound for petrol engine or electric motor with pneumatic wheels



Item	Part No.	Name	Qty	L
10	4810060305	Trailer wraparound for petrol engine or electric motor	1	
20	4810060294	Nut	2	
30	4810060295	Washer	2	
40	4810060296	Shock absorber	2	
50	4810060297	Pin	2	
60	4810060298	Washer	2	
70	4810060303	Pneumatic wheel	2	
80	4810060299	Hand grip	2	

Any unauthorized use or copying of the contents or any part thereof is prohibited.  
This applies in particular to trademarks, model denominations, part numbers, and  
drawings.

