

# WEDA L95N ESF

---

## Spare Parts List Dewatering Pumps

WEDA L95N ESF s/n ESF999999 -



# General information

Use only authorized parts. Any damage or malfunction caused by the use of unauthorized parts is not covered by Warranty or Product Liability.  
Any unauthorized use or copying of the contents or any part thereof is prohibited. This applies in particular to trademarks, model denominations, part numbers, and drawings.

## **Instructions for use**

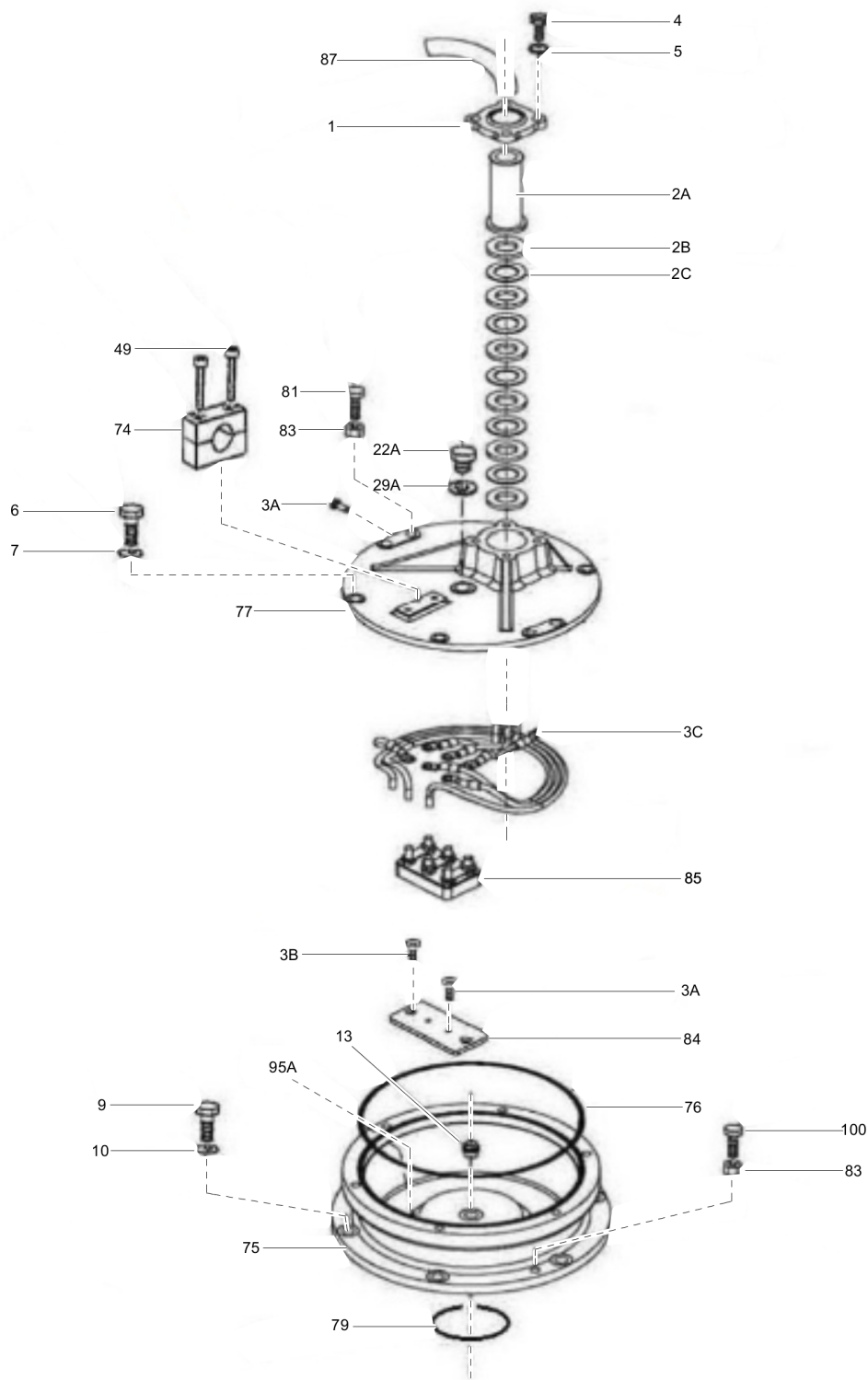
This spare parts list contains no safety regulations and is merely intended to assist in the ordering of spare parts.

For information about operating, servicing, or repairing, the relevant Safety and operating instructions must be consulted at all costs.

Please observe the safety instructions listed in the relevant Safety and operating instructions!

Cover assembly .....	1
Oil Chamber assembly .....	3
Motor assembly .....	5
Wet end assembly .....	7
Mechanical seal cross section .....	9

Cover assembly

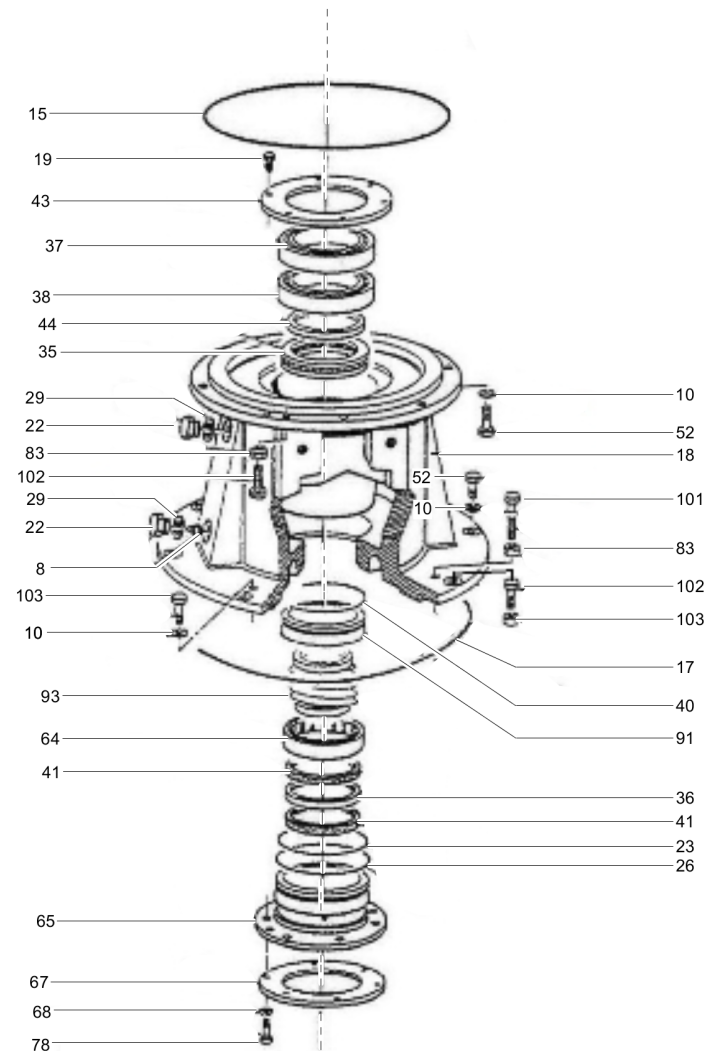


Refer to Parts Online for the most up to date information. The printed information might be outdated.

Wed Apr 22 02:15:02 UTC 2020

Item	Part No.	Name	Qty	L
1	308170001	Cable gland	1	
2A	3081710163	Cable rubber sleeve	1	
2B	3081710164	Steel washer	5	
2C	3081710165	Rubber washer	5	
3A	3081601597	Bolt TCEI M6x10	3	
3B	A2504042	Screw	2	
3C	A5001070	Cable connectors	7	
4	3081710012	Screw	4	
5	3081710013	Seal washer	4	
6	3081710014	Screw	6	
7	3081710015	Seal washer	6	
9	3081710157	Screw	6	
10	3081710018	Seal washer	36	
13	3081710021	Plug	1	
22A	3081710097	Plug	1	
29A	3081710103	Washer	1	
49	A2502047	Screw	2	
74	A6038043	Cable clip	1	
75	F20623v02	Electric motor cover	1	
76	3081710134	O-ring	1	
77	F20624	Stuffing box	1	
79	A1501066VITON	O-ring	1	
81	A2501022	Screw	2	
83	3081710139	Nut	16	
84	F20635	Terminal board plate	1	
85	A3012069	Terminal board	1	
87	3081710142	Electric cable	20	
95A	3081710148	Cable resin casting	-	
100	A2501021	Screw	2	

Oil Chamber assembly

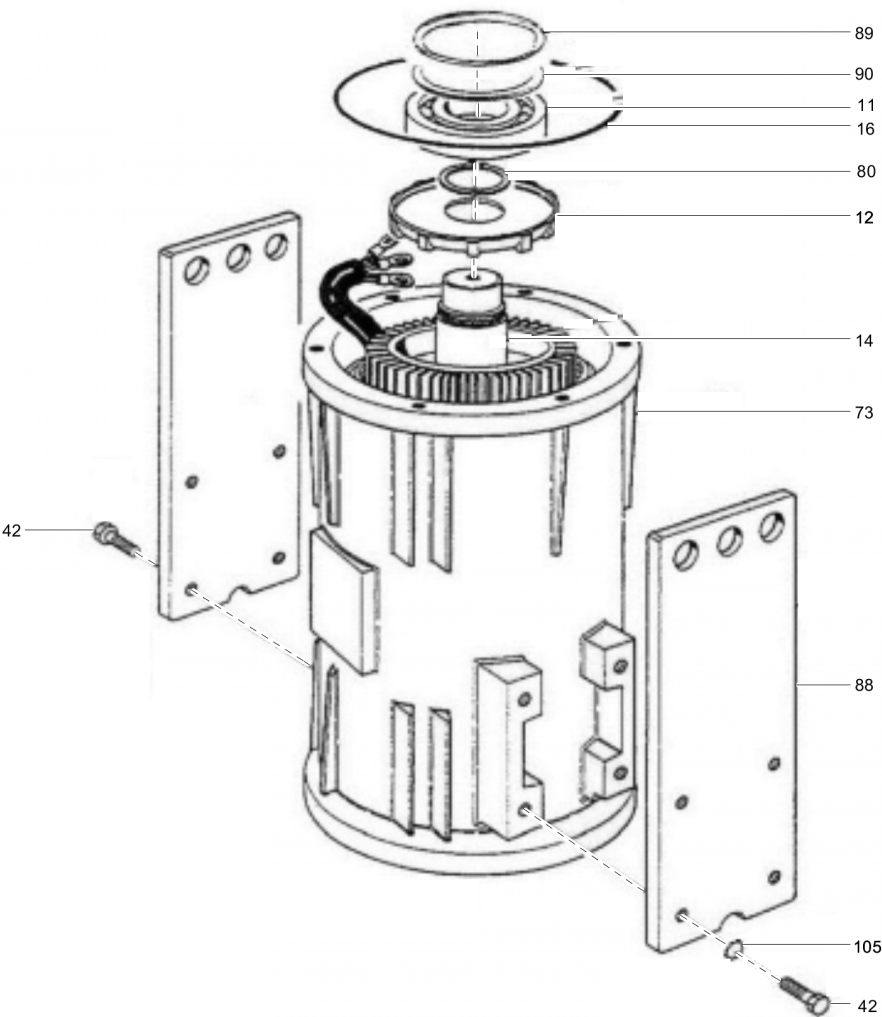


Refer to Parts Online for the most up to date information. The printed information might be outdated.

Wed Apr 22 02:15:03 UTC 2020

Item	Part No.	Name	Qty	L
8	3081710016	Grease nipple	2	
10	3081710018	Seal washer	36	
15	3081710167	O-ring	1	
17	3081710169	O-ring	2	
18	162035v01	Oil chamber	1	
19	3081710093	Screw	6	
22	3081601685	Plug	4	
23	3081710098	O-ring	1	
26	3081710100	O-ring	1	
29	3081601626	Copper washer	4	
35	3081710105	Thrust bearing	1	
36	3081710106	Seal	1	
37	3081710107	Ball bearing	1	
38	3081710108	Ball bearing	1	
40	3081710109	O-ring	1	
41	3081710106	Seal	2	
43	3081710111	Bearing flange	1	
44	3081710112	Spacer	1	
52	3081710017	Screw	26	
64	3081710127	Roller bearing	1	
65	3081710128	Lower seals housing	1	
67	3081710130	Lower seals flange	1	
68	3081601693	Seal washer M10	6	
78	308161602	Screw	6	
83	3081710139	Nut	16	
91	3081710146	Upper mechanical seal housing	1	
93	3081601973	Mechanical seal	1	
101	3081710153	Screw	6	
102	3081710119	Screw	6	
103	3081710110	Screw	4	

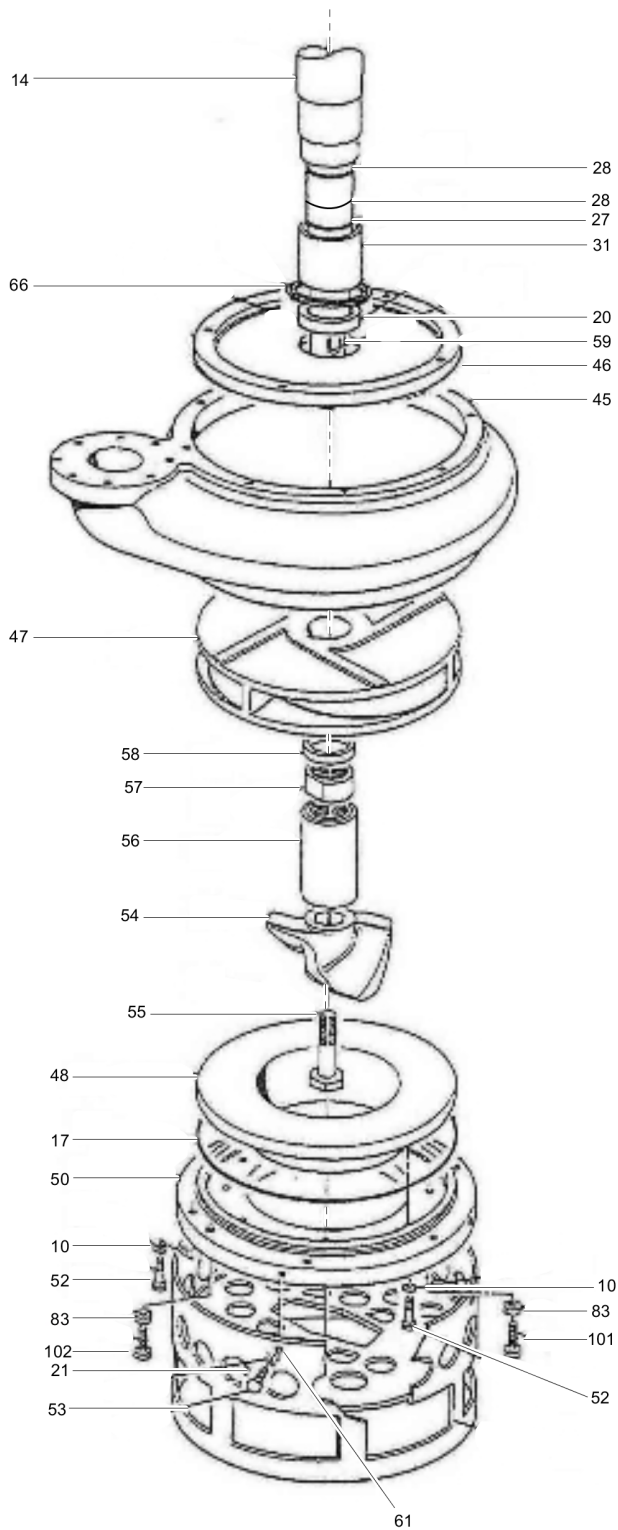
Motor assembly





Item	Part No.	Name	Qty	L
11	3081710166	Ball bearing	1	
12	F20627	Motor fan	1	
14	RR0001243	Main shaft + Rotor	1	
16	3081710168	O-ring	1	
42	A2501022	Screw	8	
73	RR0001029	Motor housing + Stator	1	
80	A2519087	Seeing ring	1	
88	3081710143	Lifting plate	2	
89	A2019026	Spring washer	1	
90	F24508	Spacer	1	
105	3081710152	Washer	8	

Wet end assembly

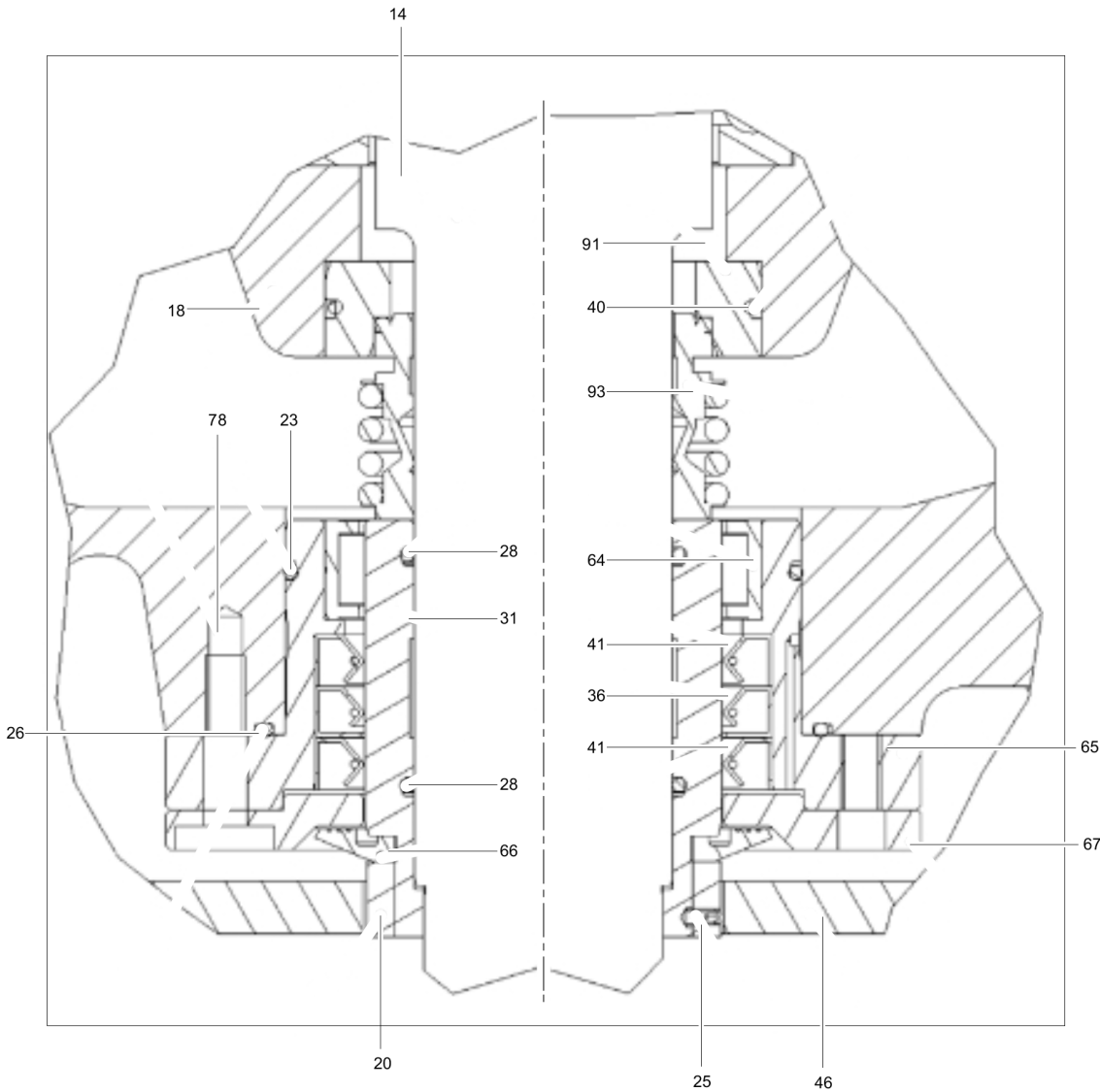


Refer to Parts Online for the most up to date information. The printed information might be outdated.

Wed Apr 22 02:15:05 UTC 2020

Item	Part No.	Name	Qty	L
10	3081710018	Seal washer	36	
14	RR0001243	Main shaft + Rotor	1	
17	3081710169	O-ring	2	
20	3081710094	Wearing spacer	1	
21	A2501090	Screw	4	
28	3081710101	O-ring	2	
31	3081710104	Lower shaft sleeve	1	
45	F25328	Casing	1	
46	F25327	Upper wear plate	1	
47	3081710170	Impeller 50Hz	1	
48	3081710171	Lower wear plate	1	
50	F25331	Suction cover	1	
52	3081710017	Screw	26	
53	F29361	Strainer stand	1	
54	3081710172	Agitator	1	
55	3081710173	Agitator screw	1	
56	3081710174	Agitator connective	1	
57	3081710175	Agitator nut	1	
58	3081710176	Agitator spacer	1	
59	A2518023	Key	1	
66	3081710129	Seal	1	
83	3081710139	Nut	16	
101	3081710153	Screw	6	
102	3081710119	Screw	6	

Mechanical seal cross section



Item	Part No.	Name	Qty	L
14	RR0001243	Main shaft + Rotor	1	
18	3081710092	Oil chamber	1	
20	3081710094	Wearing spacer	1	
23	3081710098	O-ring	1	
25	3081710099	Grub screw	4	
26	3081710100	O-ring	1	
28	3081710101	O-ring	2	
31	3081710104	Lower shaft sleeve	1	
36	3081710106	Seal	1	
40	3081710109	O-ring	1	
41	3081710106	Seal	2	
46	F25327	Upper wear plate	1	
64	3081710127	Roller bearing	1	
65	3081710128	Lower seals housing	1	
66	3081710129	Seal	1	
67	3081710177	Lower seals flange	1	
78	3081601602	Bolt TE M10x40	6	
91	3081710146	Upper mechanical seal housing	1	
93	3081601973	Mechanical seal	1	

Any unauthorized use or copying of the contents or any part thereof is prohibited.  
This applies in particular to trademarks, model denominations, part numbers, and  
drawings.

