

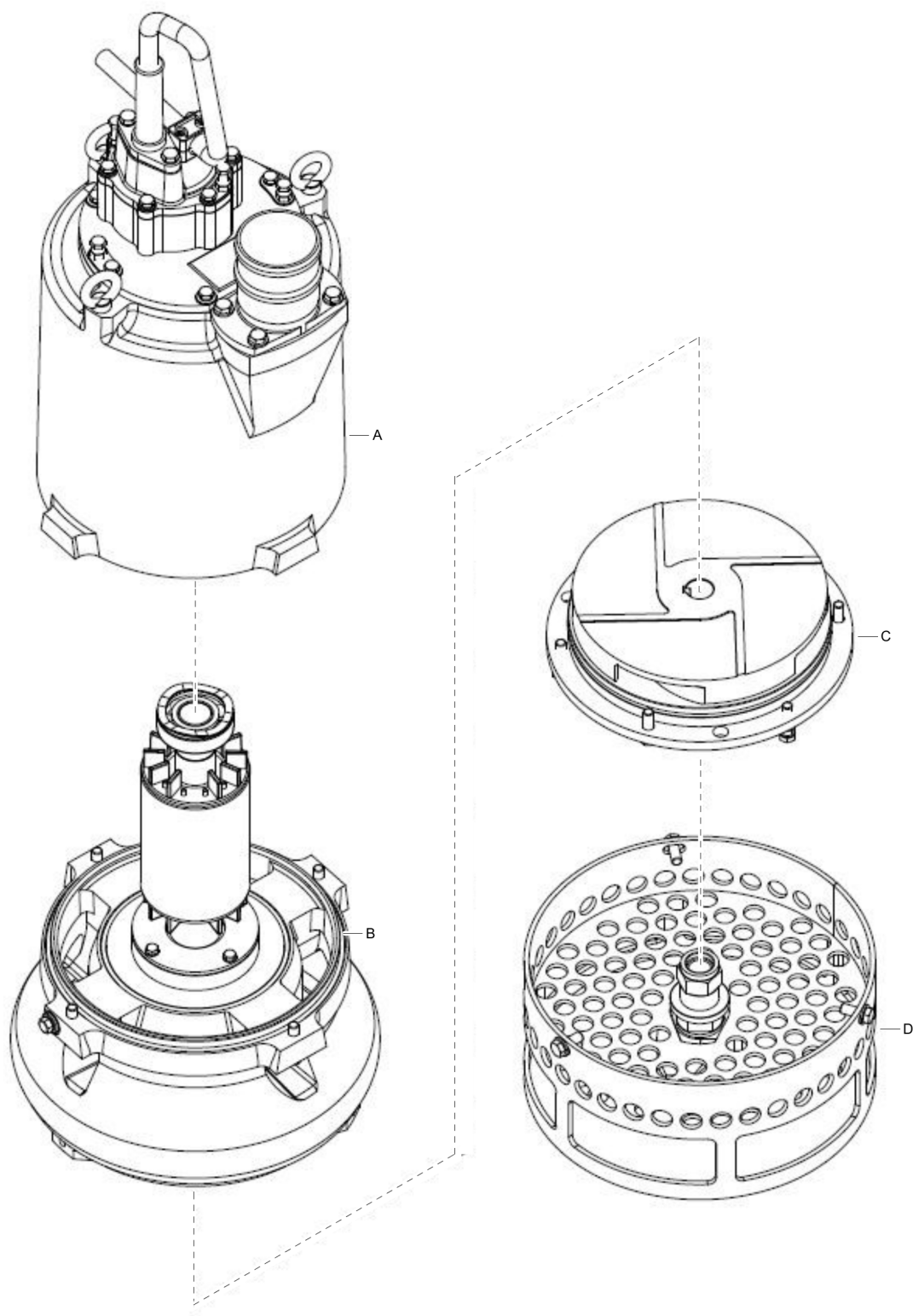
# **WEDA L50/60/70N ESF s/n ESF999999 -**

Spare Part List Portable Dewatering Pump

Pump groups	1
Electric motor group	3
Power cable sealing covers	5
On board electric connections	7
Main shaft	9
Oil chamber	11
Seals	13
Mechanical seal cross section	15
Lip seals cross section	17
Impeller kit L50N	19
Impeller kit L60N	21
Impeller kit L70N	23
Agitator kit	25
Jet-ring system 3081601724	27
Compensation system 3081601726	29
Temperature sensor 3081601728	31
Cutter knife	33
Aggressive environment kit 3081601730	35



## Pump groups

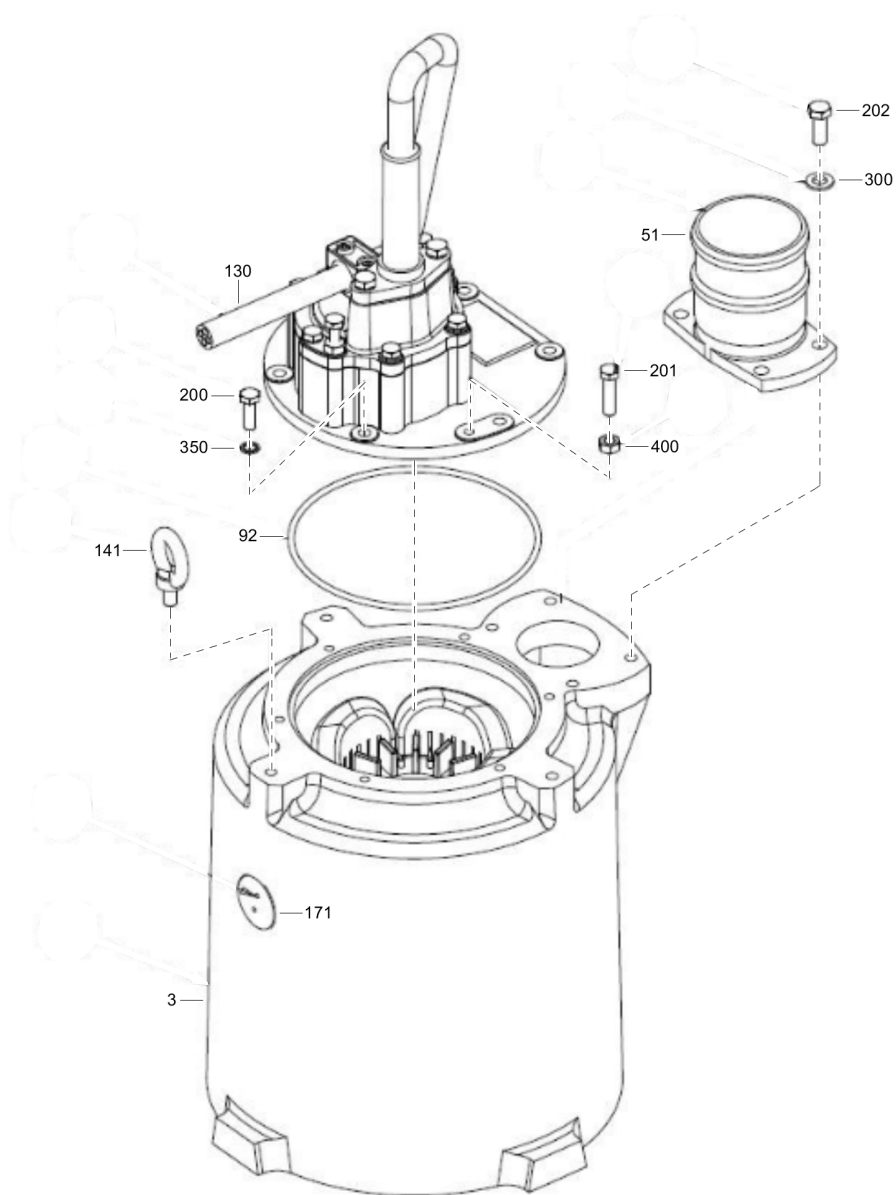


Refer to Parts Online for the most up to date information. The printed information might be outdated.

Wed Apr 22 19:45:11 UTC 2020

Item	Part No.	Name	Qty	L
A	-	Electric motor group	1	
B	-	Oil chamber/Casing group	1	
C	-	Impeller kit	1	
D	-	Agitator kit	1	

## Electric motor group

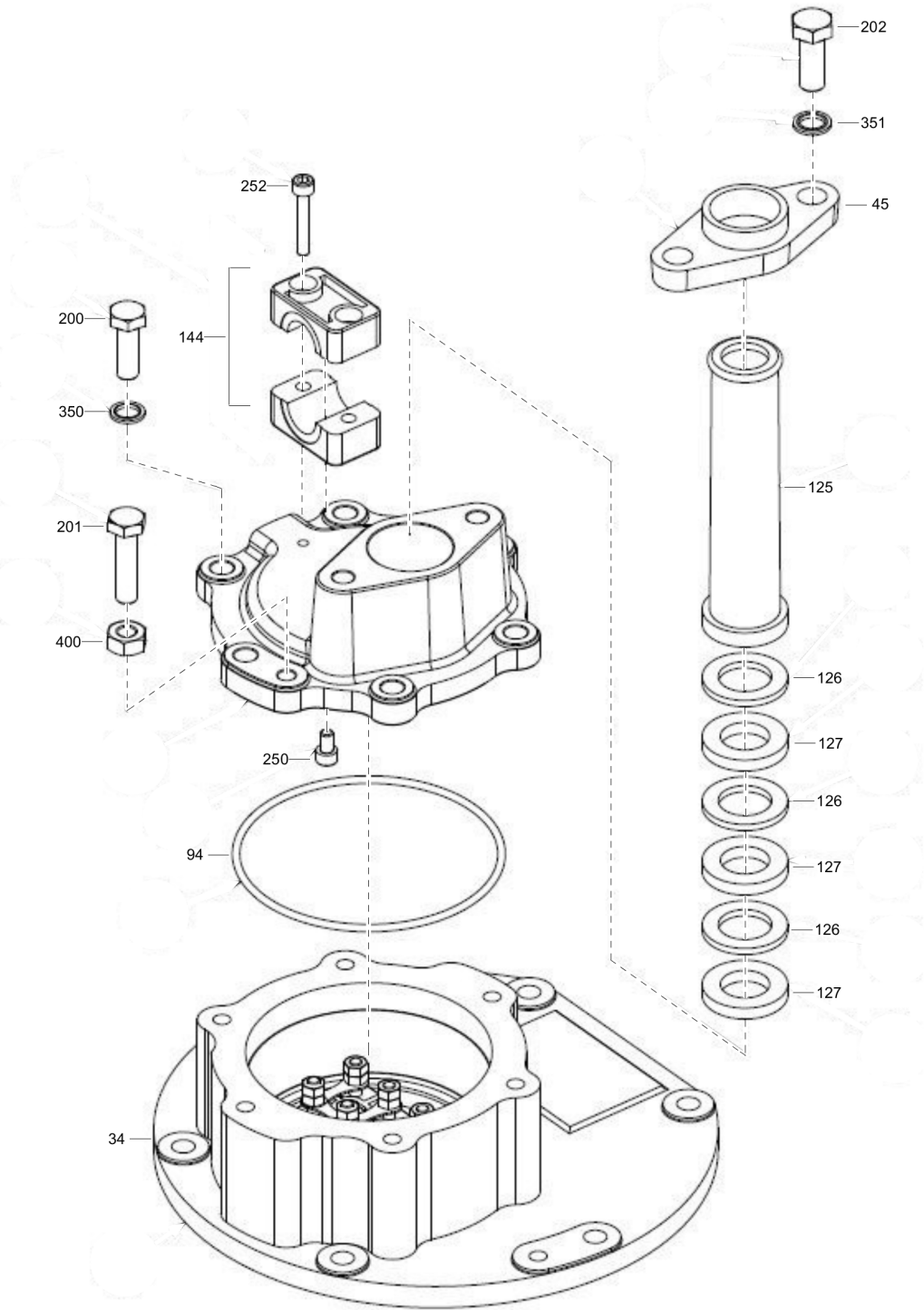


Refer to Parts Online for the most up to date information. The printed information might be outdated.

Wed Apr 22 19:45:12 UTC 2020

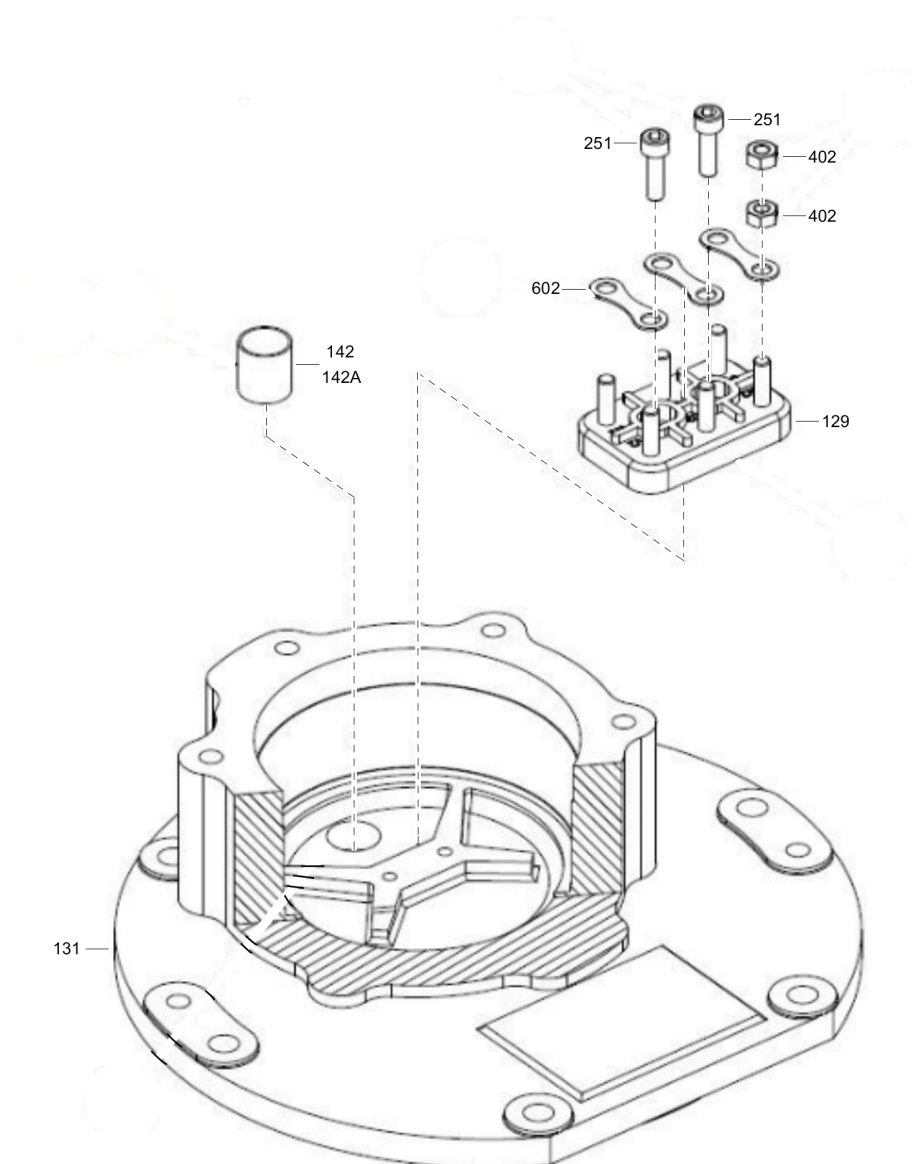
Item	Part No.	Name	Qty	L
3	-	Motor housing + stator	-	
-	3081601661	Motor housing + stator L50N	1	
-	3081601663	Motor housing + stator L60N	1	
-	3081601656	Motor housing + stator L70N	1	
51	3081601630	Discharge adapter	1	
92	3081601680	O-ring	2	
130	4810022531	Power cable (default 20m)	1	
141	3081601631	Eyebolt	3	
171	3081601686	Plug	1	
200	3081601600	Bolt TE M10x30	12	
201	3081601602	Bolt TE M10x40	4	
202	3081601605	Bolt TE M12x30	10	
300	3081601715	Washer M12	7	
350	3081601693	Seal washer M10	12	
400	3081601665	Nut M10	4	

Power cable sealing covers



Item	Part No.	Name	Qty	L
34	3081601712	Upper support	1	
40	3081601710	Upper inspection cover	1	
45	3081601687	Power cable gland	1	
94	3081601672	O-ring	1	
125	3081601621	Cable rubber sleeve	1	
126	4810022701	Steel washer	3	
127	4810022700	Rubber washer	3	
144	3081601618	Cable clip	1	
200	3081601600	Bolt TE M10x30	12	
201	3081601602	Bolt TE M10x40	4	
202	3081601605	Bolt TE M12x30	10	
250	3081601597	Bolt TCEI M6x10	4	
252	3081601599	Bolt TCEI M6x35	2	
350	3081601693	Seal washer M10	12	
351	3081601695	Seal washer M12	16	
400	3081601665	Nut M10	4	

## On board electric connections

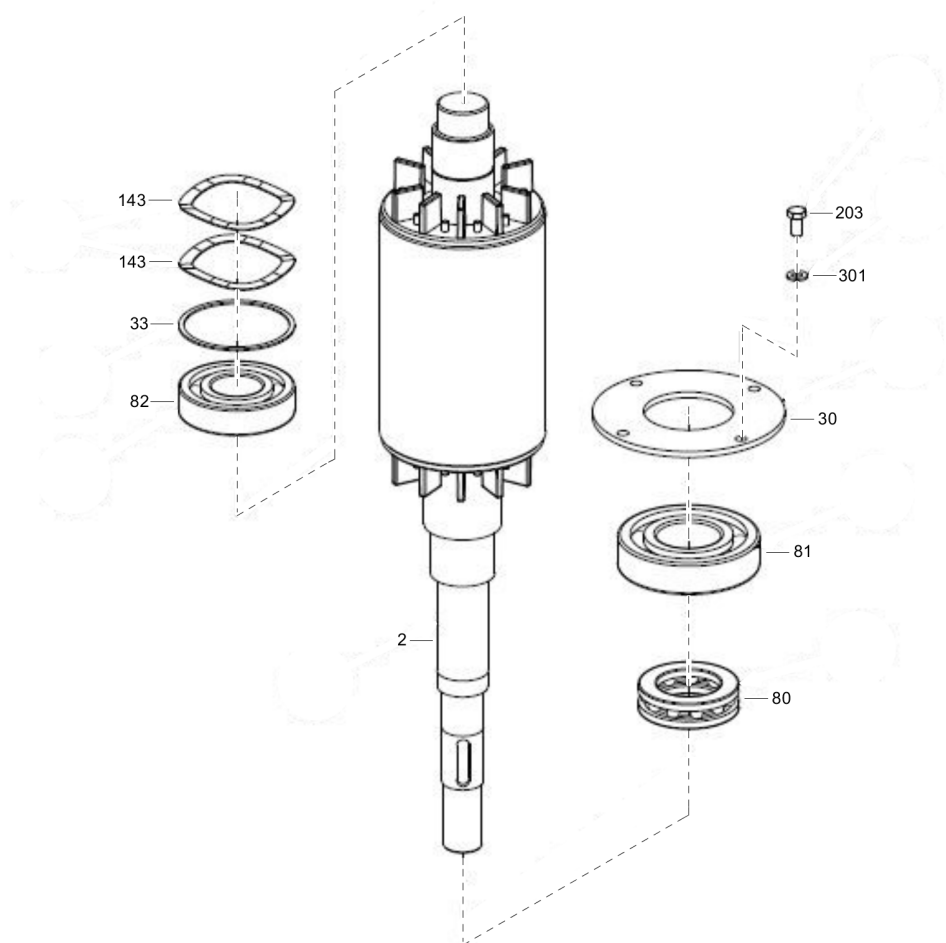


Refer to Parts Online for the most up to date information. The printed information might be outdated.

Wed Apr 22 19:45:13 UTC 2020

Item	Part No.	Name	Qty	L
129	3081601705	Terminal board	1	
131	3081601620	Cable resin castin	1	
142	3081601619	Cable gland	1	
142A	3081601653	Mastic	1	
251	3081601598	Bolt TCEI M6x20	2	
402	3081601668	Nut M6	12	
602	3081601705	Terminal board	3	

## Main shaft

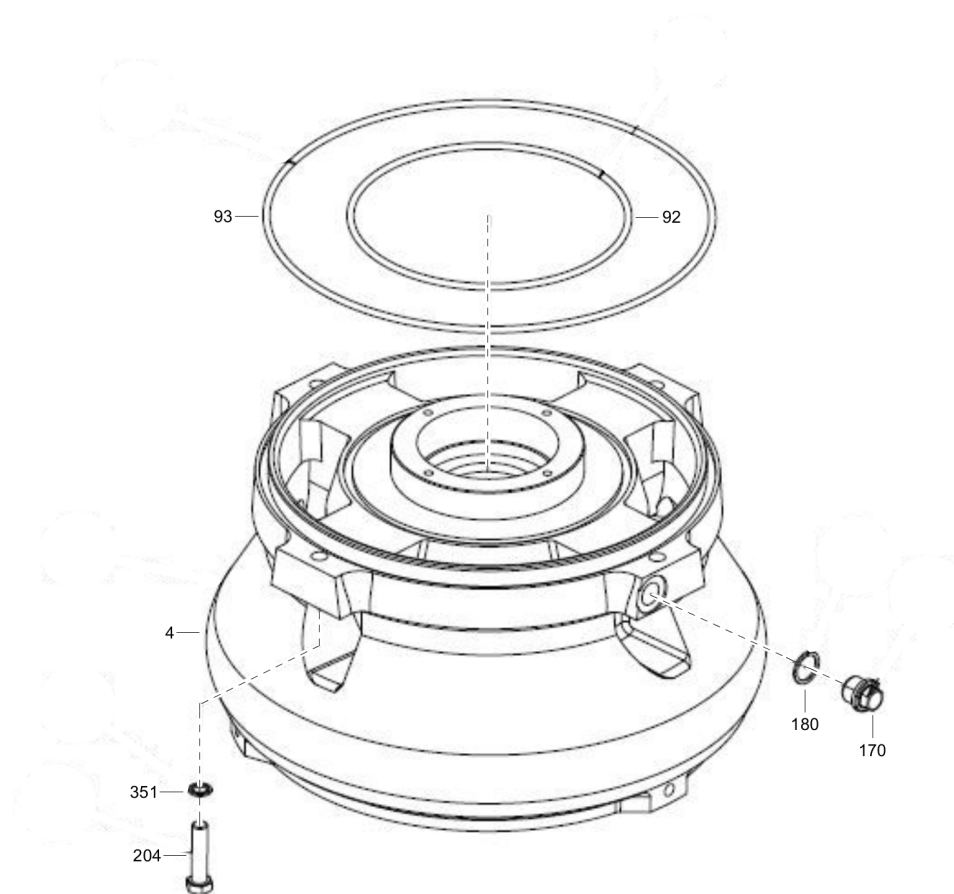


Refer to Parts Online for the most up to date information. The printed information might be outdated.

Wed Apr 22 19:45:14 UTC 2020

Item	Part No.	Name	Qty	L
2	-	Motor shaft + rotor	-	
-	3081601650	Motor shaft + rotor L50N	1	
-	3081601652	Motor shaft + rotor L60N	1	
-	3081601647	Motor shaft + rotor L70N	1	
30	3081601708	Upper bearings flange	1	
33	3081601700	Spring spacer	1	
80	4810022485	Thrust bearing 51210	1	
81	4810022474	Ball bearing 6310 2RS	1	
82	4810022473	Ball bearing 6308 2RS	1	
143	3081601702	Spring washer	2	
203	3081601615	Bolt TE M8x16	4	
301	3081601718	Washer M8	4	

## Oil chamber

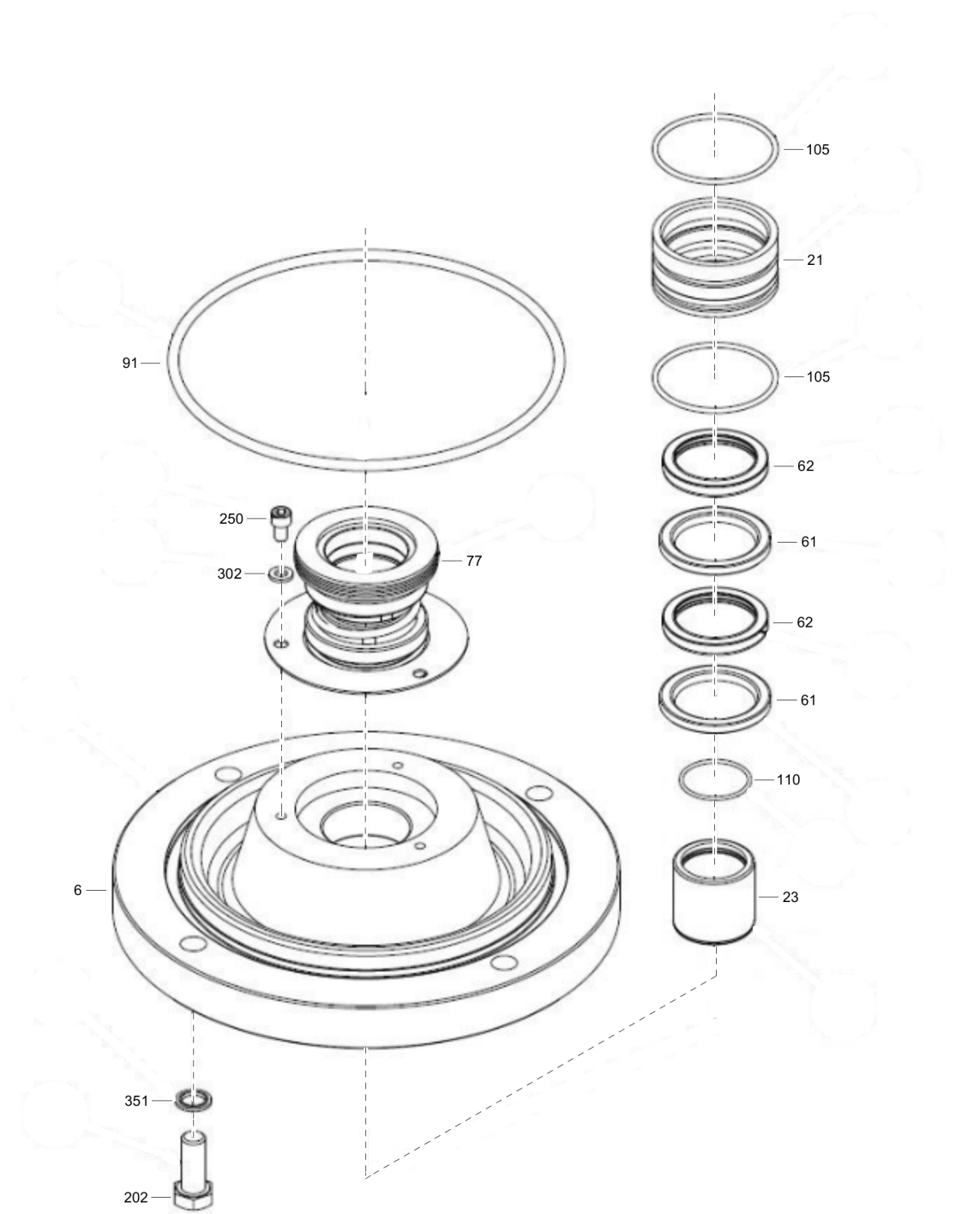


Refer to Parts Online for the most up to date information. The printed information might be outdated.

Wed Apr 22 19:45:14 UTC 2020

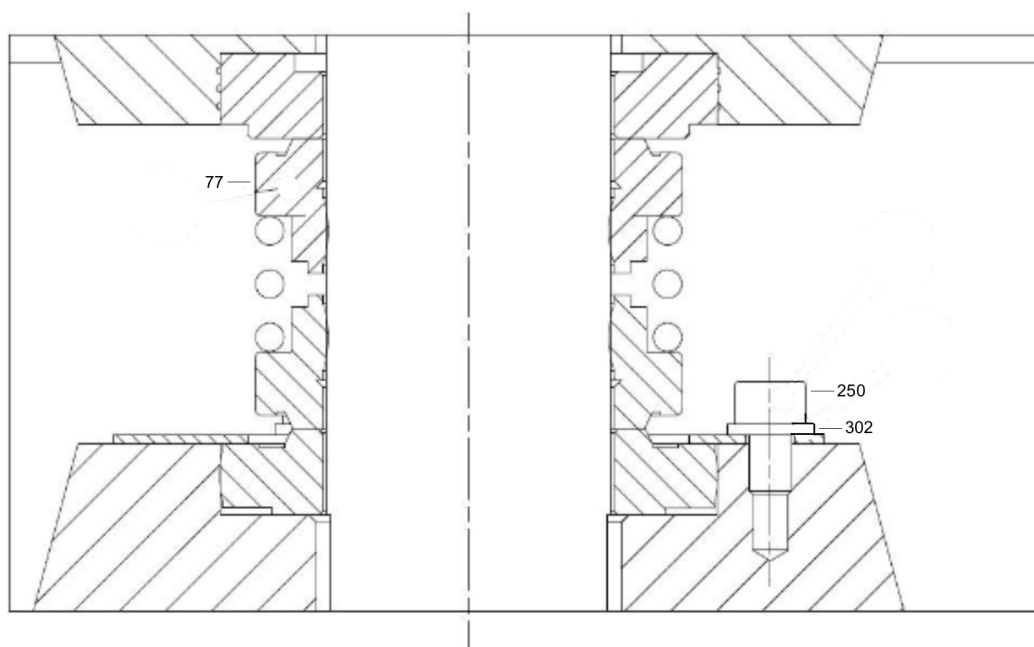
Item	Part No.	Name	Qty	L
4	3081601623	Casing-oil chamber	1	
92	3081601680	O-ring	2	
93	4810060353	O-ring	1	
170	3081601685	Plug	1	
180	3081601626	Copper washer	1	
204	3081601613	Bolt TE M12x50	4	
351	3081601685	Plug	16	

Seals



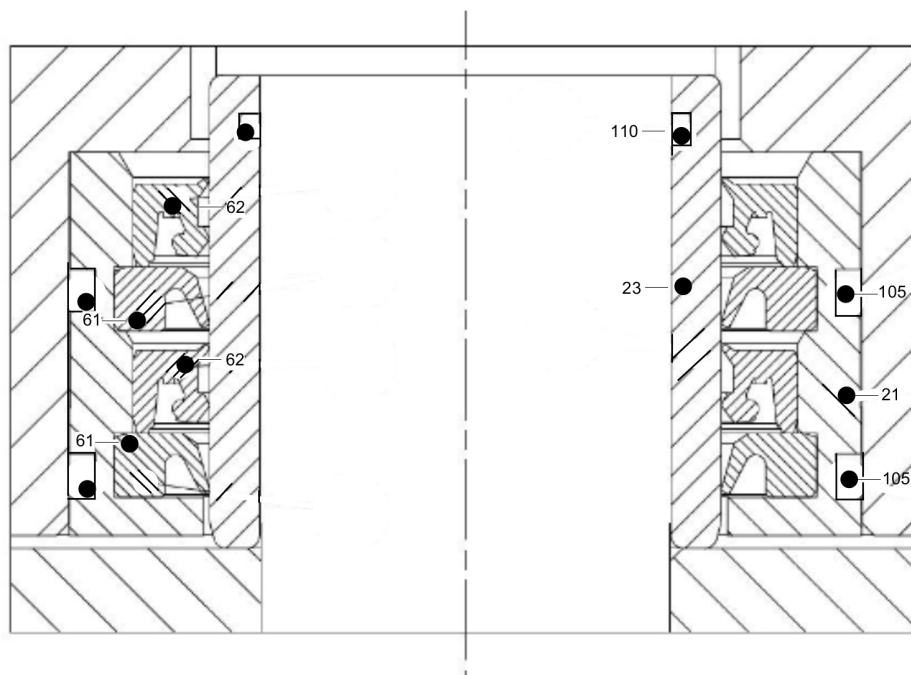
Item	Part No.	Name	Qty	L
6	4810022405	Upper wear plate	1	
21	4810022786	Lower seal housing	1	
23	3081601642	Lower shaft sleeve	1	
61	4810022785	Seal	2	
62	4810022577	Seal	2	
77	3081601654	Mechanical seal	1	
91	3081601679	O-ring	1	
105	3081601670	O-ring	2	
110	3081601671	O-ring	1	
202	3081601605	Bolt TE M12x30	10	
250	3081601597	Bolt TCEI M6x10	4	
302	3081601717	Washer M6	3	
351	3081601695	Seal washer M12	16	

## Mechanical seal cross section



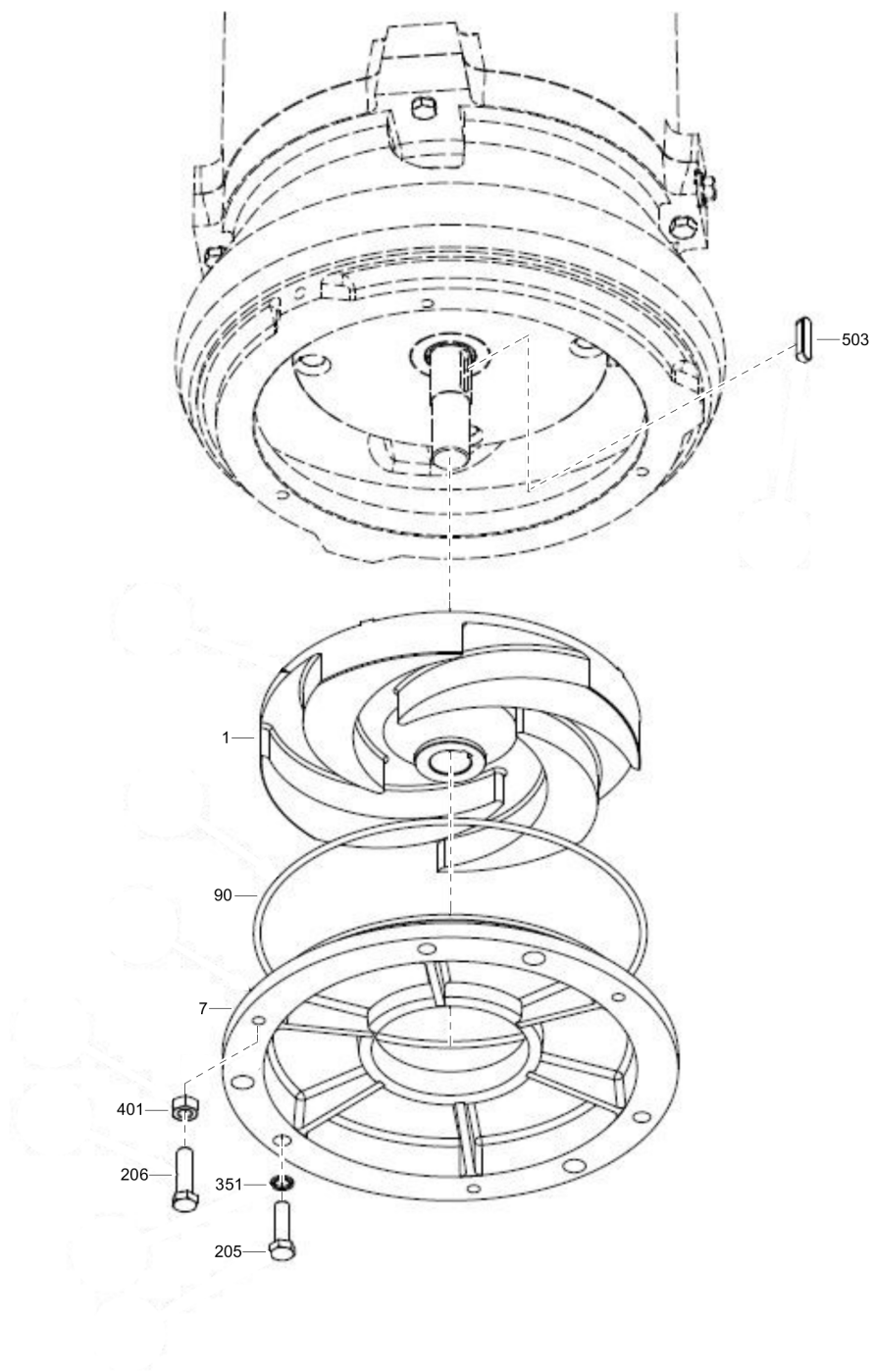
Item	Part No.	Name	Qty	L
77	3081601654	Mechanical seal	1	
250	3081601597	Bolt TCEI M6x10	4	
302	3081601717	Washer M6	3	

## Lip seals cross section



Item	Part No.	Name	Qty	L
21	4810022786	Lower seal housing	1	
23	3081601642	Lower shaft sleeve	1	
61	4810022785	Seal	2	
62	4810022577	Seal	2	
105	3081601670	O-ring	2	
110	3081601671	O-ring	1	

## Impeller kit L50N

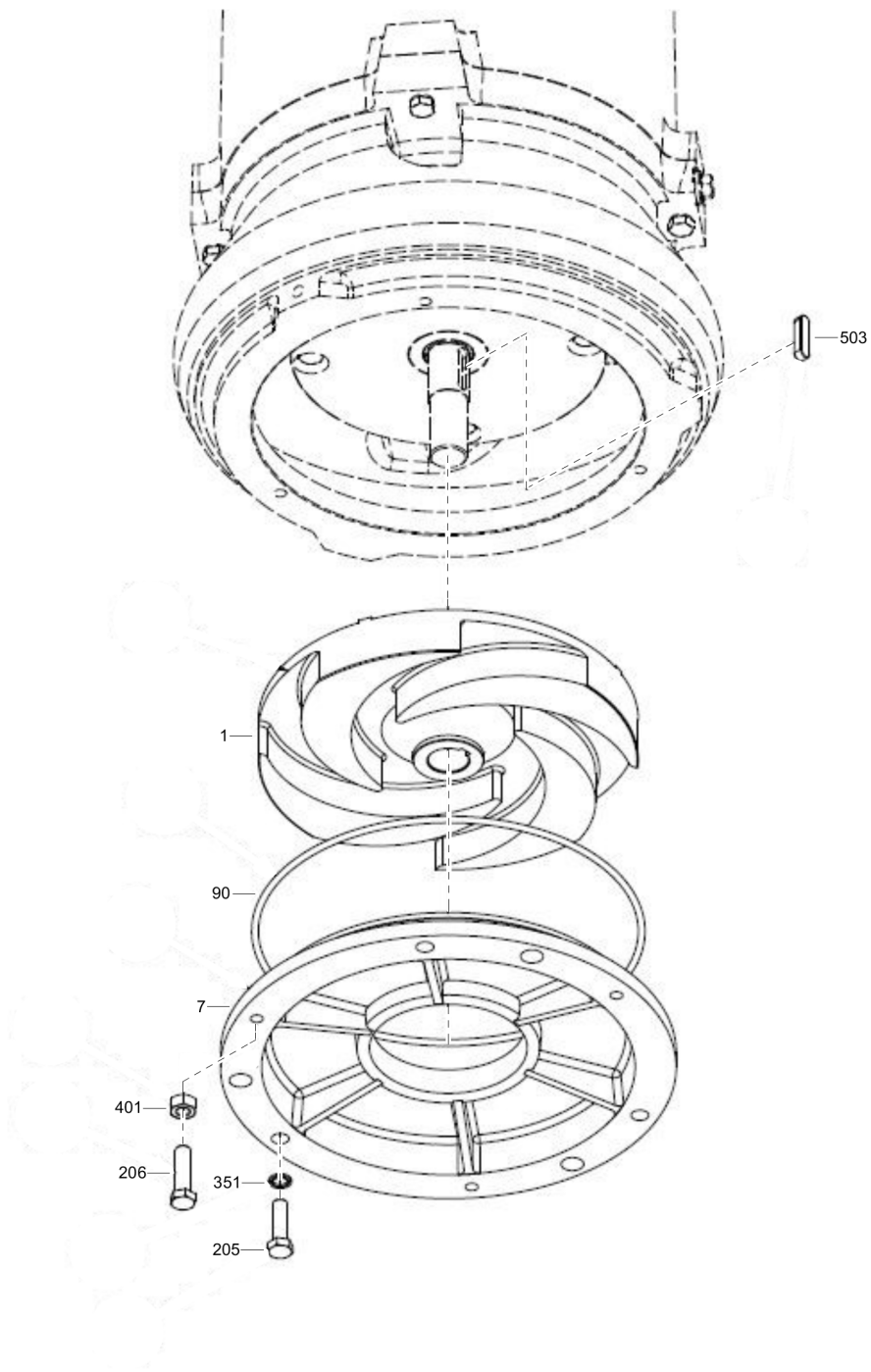


Refer to Parts Online for the most up to date information. The printed information might be outdated.

Wed Apr 22 19:45:17 UTC 2020

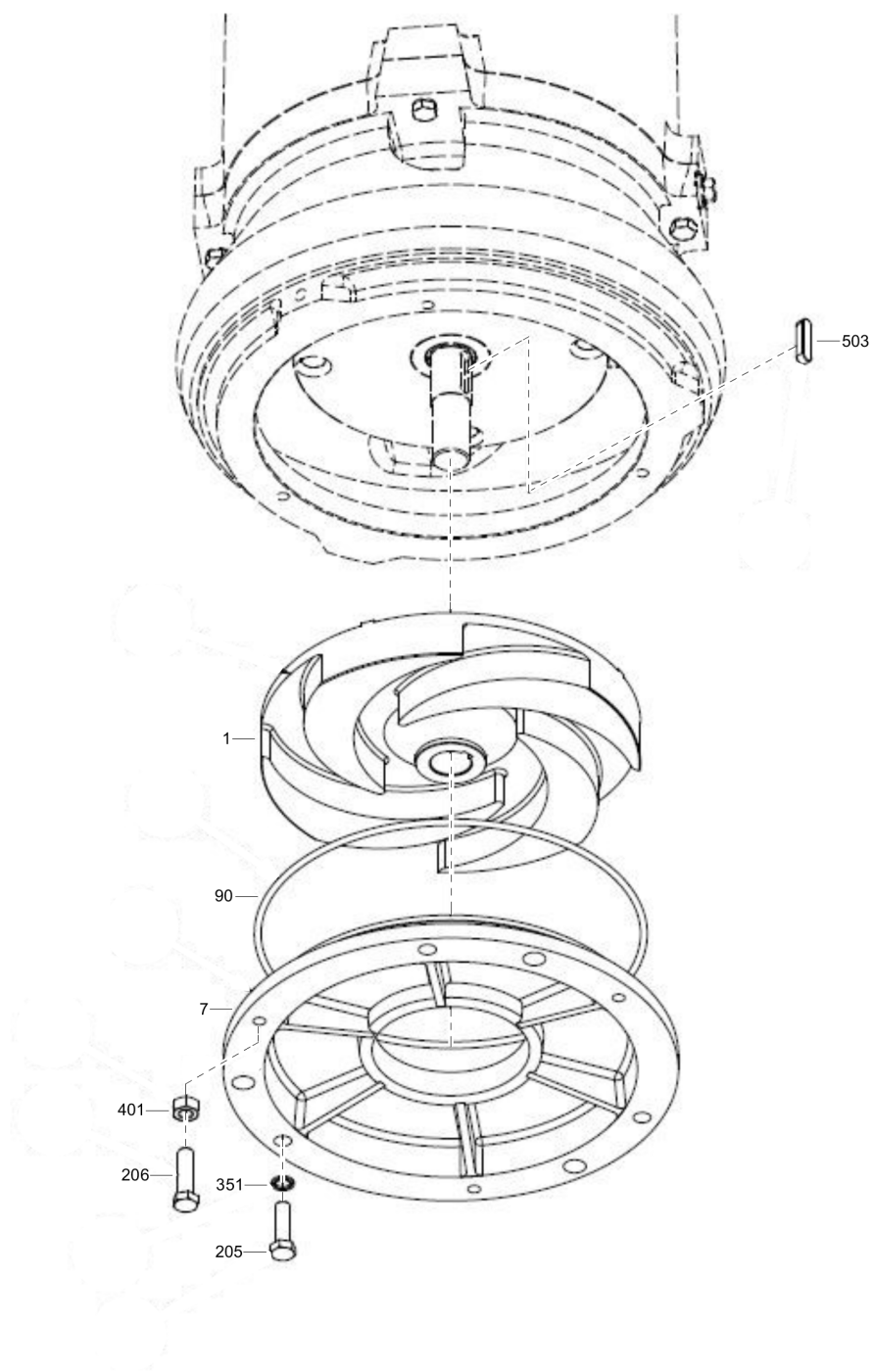
Item	Part No.	Name	Qty	L
1	-	Impeller	-	
-	4810022398	Impeller 60Hz	1	
-	3081601637	Impeller 60Hz	1	
7	4810022397	Lower wear plate	1	
90	3081601678	O-ring	1	
205	3081601609	Bolt TE M12x40	3	
206	3081601611	Bolt TE M12x45	3	
351	3081601695	Seal washer M12	16	
401	3081601666	Nut M12	3	
503	3081601641	Key	1	

Impeller kit L60N



Item	Part No.	Name	Qty	L
1	-	Impeller	-	
-	3081601634	Impeller 50Hz	1	
-	3081601638	Impeller 60Hz	1	
7	4810022397	Lower wear plate	1	
90	3081601678	O-ring	1	
205	3081601609	Bolt TE M12x40	3	
206	3081601611	Bolt TE M12x45	3	
351	3081601695	Seal washer M12	16	
401	3081601666	Nut M12	3	
503	3081601641	Key	1	

## Impeller kit L70N

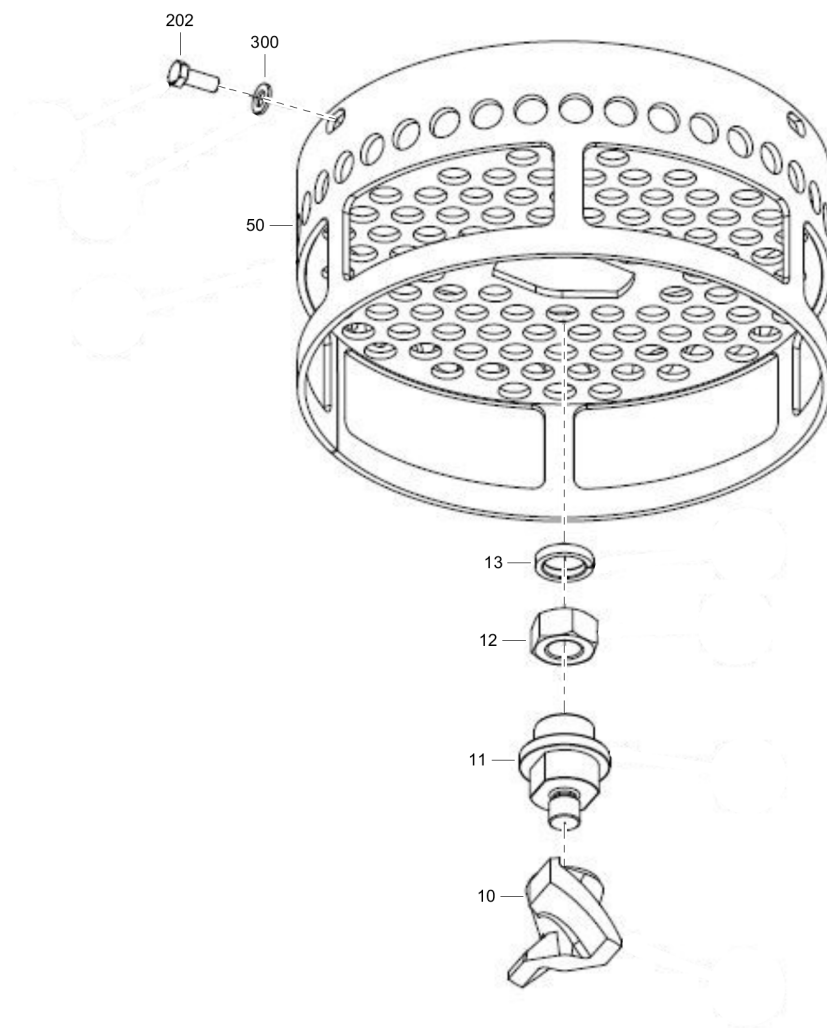


Refer to Parts Online for the most up to date information. The printed information might be outdated.

Wed Apr 22 19:45:18 UTC 2020

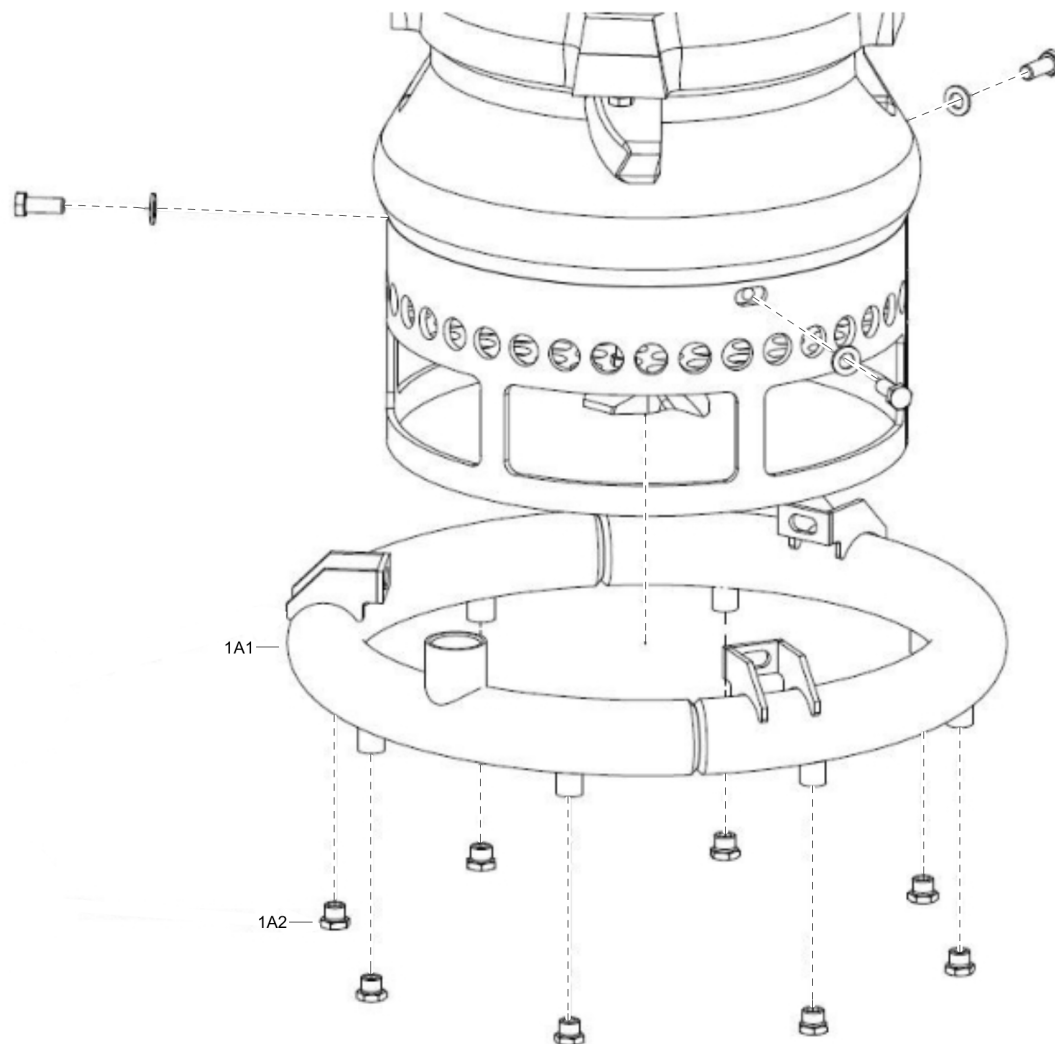
Item	Part No.	Name	Qty	L
1	-	Impeller	-	
-	3081601635	Impeller 50Hz	1	
-	4810022398	Impeller 60Hz	1	
7	4810022397	Lower wear plate	1	
90	3081601678	O-ring	1	
205	3081601609	Bolt TE M12x40	3	
206	3081601611	Bolt TE M12x45	3	
351	3081601695	Seal washer M12	16	
401	3081601666	Nut M12	3	
503	3081601641	Key	1	

## Agitator kit



Item	Part No.	Name	Qty	L
10	3081601582	Agitator	1	
11	3081601585	Agitator connector	1	
12	3081601589	Agitator nut	1	
13	3081601594	Agitator spacer	1	
50	3081601704	Strainer	1	
202	3081601605	Bolt TE M12x30	10	
300	3081601715	Washer M12	7	

## Jet-ring system 3081601724

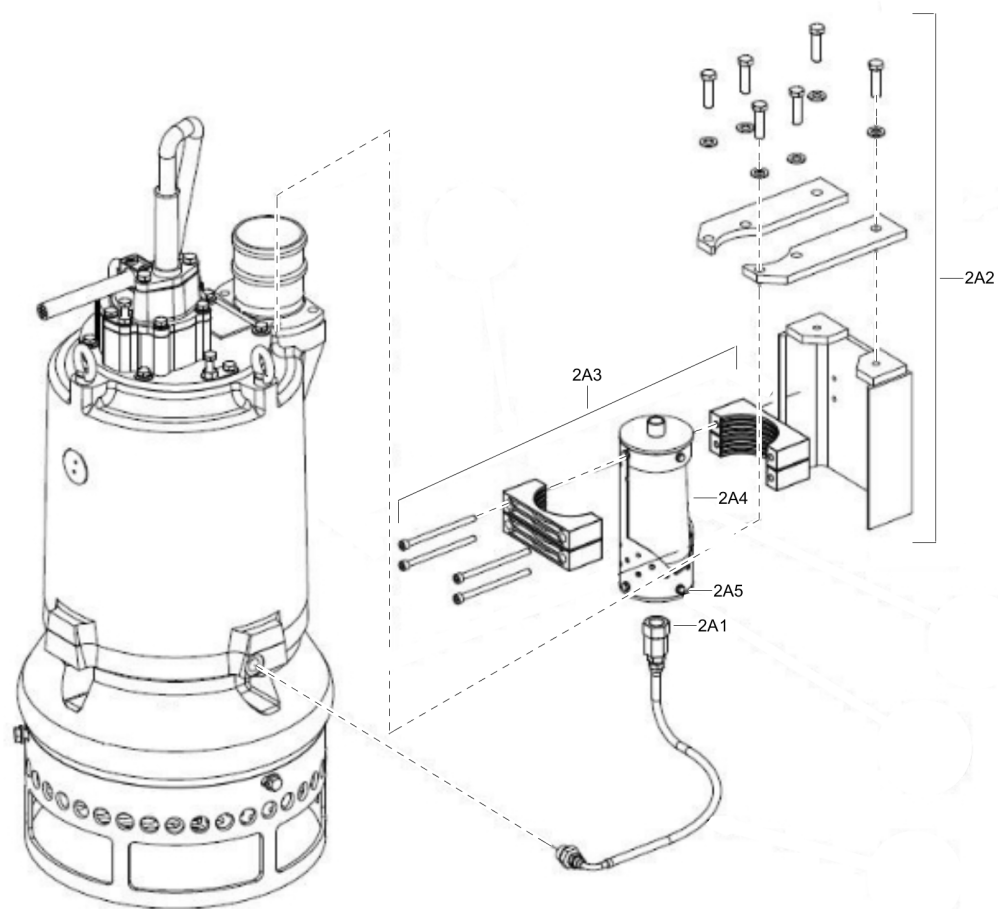


Refer to Parts Online for the most up to date information. The printed information might be outdated.

Wed Apr 22 19:45:19 UTC 2020

Item	Part No.	Name	Qty	L
-	3081601724	Jet-ring system	-	
1A1	3081601639	Jet-ring frame	1	
1A2	3081601682	Nozzle	8	

## Compensation system 3081601726

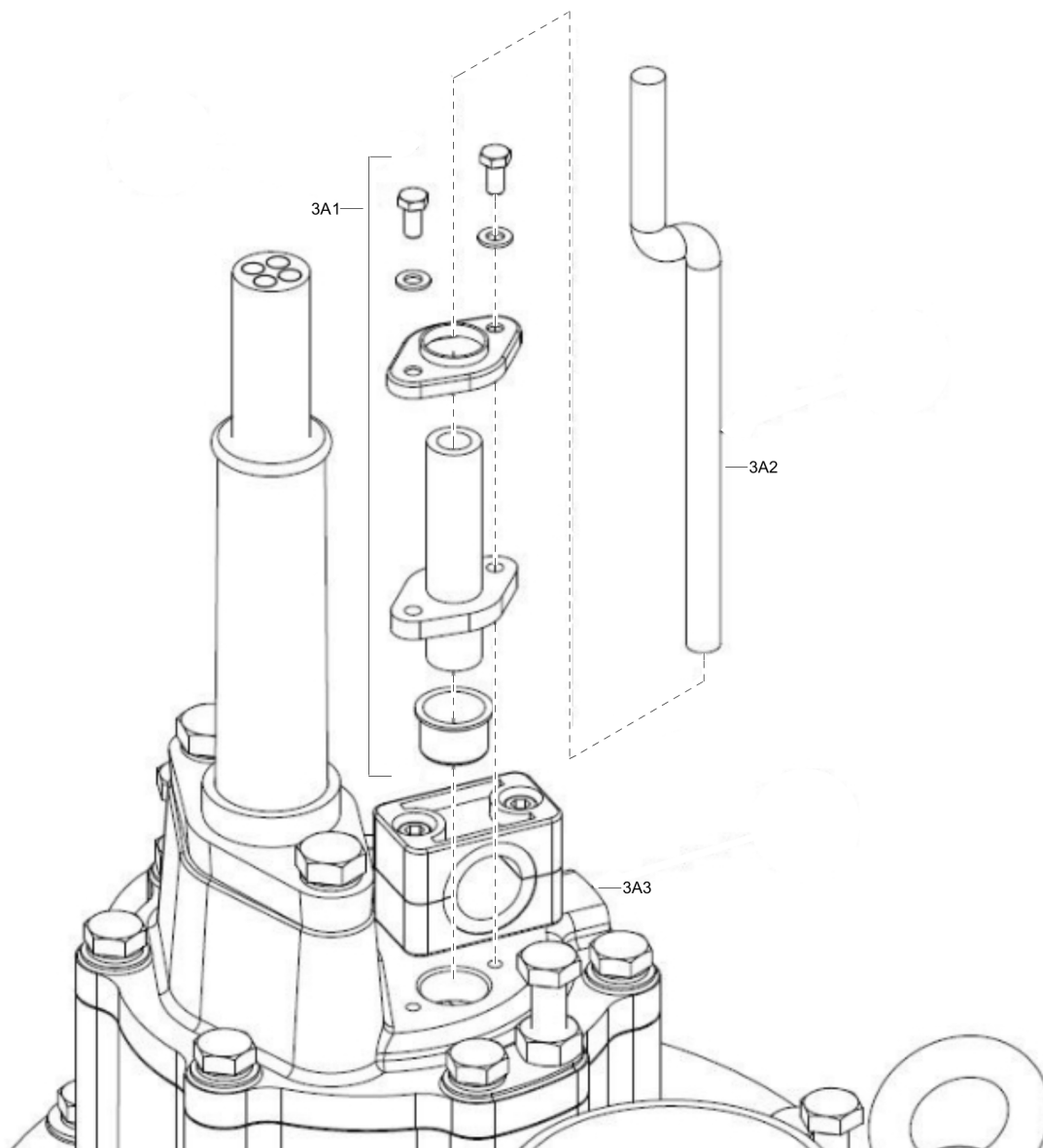


Refer to Parts Online for the most up to date information. The printed information might be outdated.

Wed Apr 22 19:45:20 UTC 2020

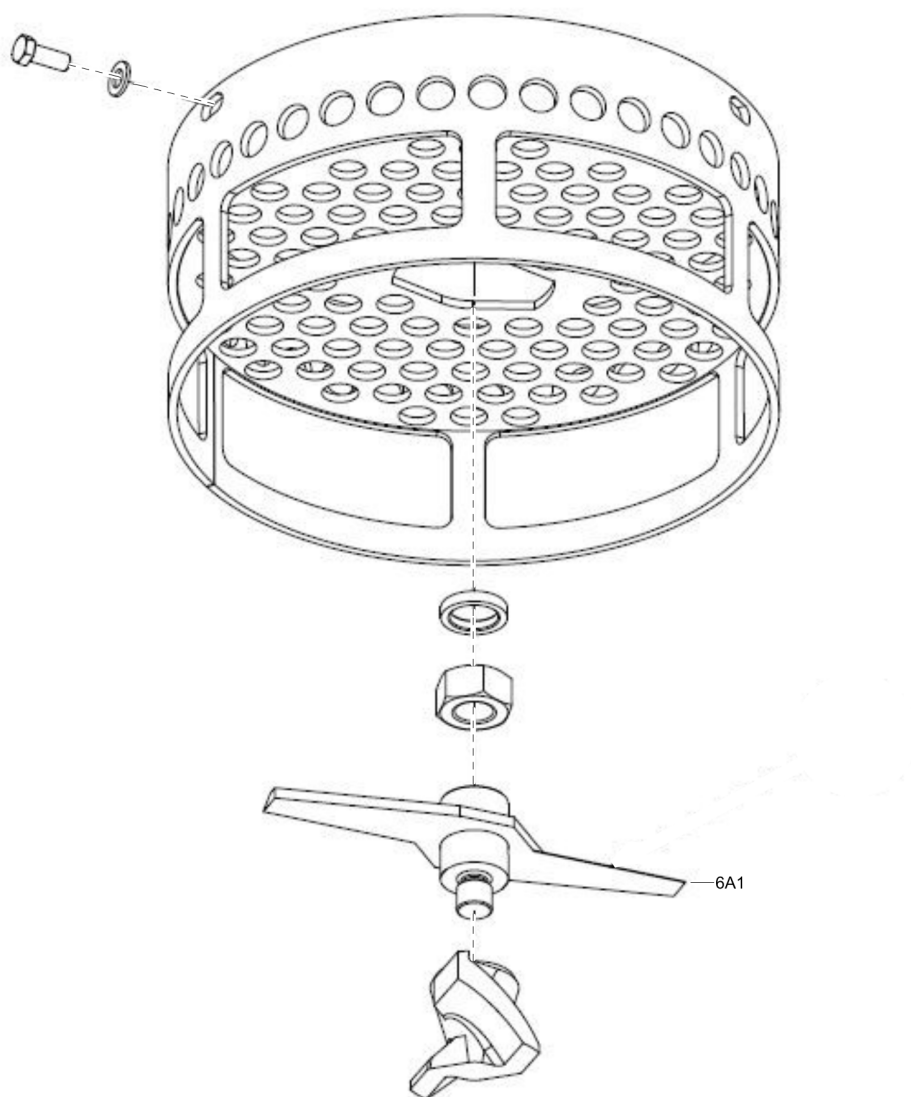
Item	Part No.	Name	Qty	L
-	3081601726	Compensation system	-	
2A1	3081601669	Oil hose	1	
2A2	3081601616	Bracket	1	
2A3	3081601624	Clip	2	
2A4	3081601688	Rubber bag	1	
2A5	3081601628	Cylinder	1	

## Temperature sensor 3081601728



Item	Part No.	Name	Qty	L
-	3081601728	Temperature sensor	-	
3A1	3081601698	Signal cable gland	1	
3A2	3081601697	Signal cable (default 20 m)	1	
3A3	3081601709	Upper inspection cover	1	

## Cutter knife

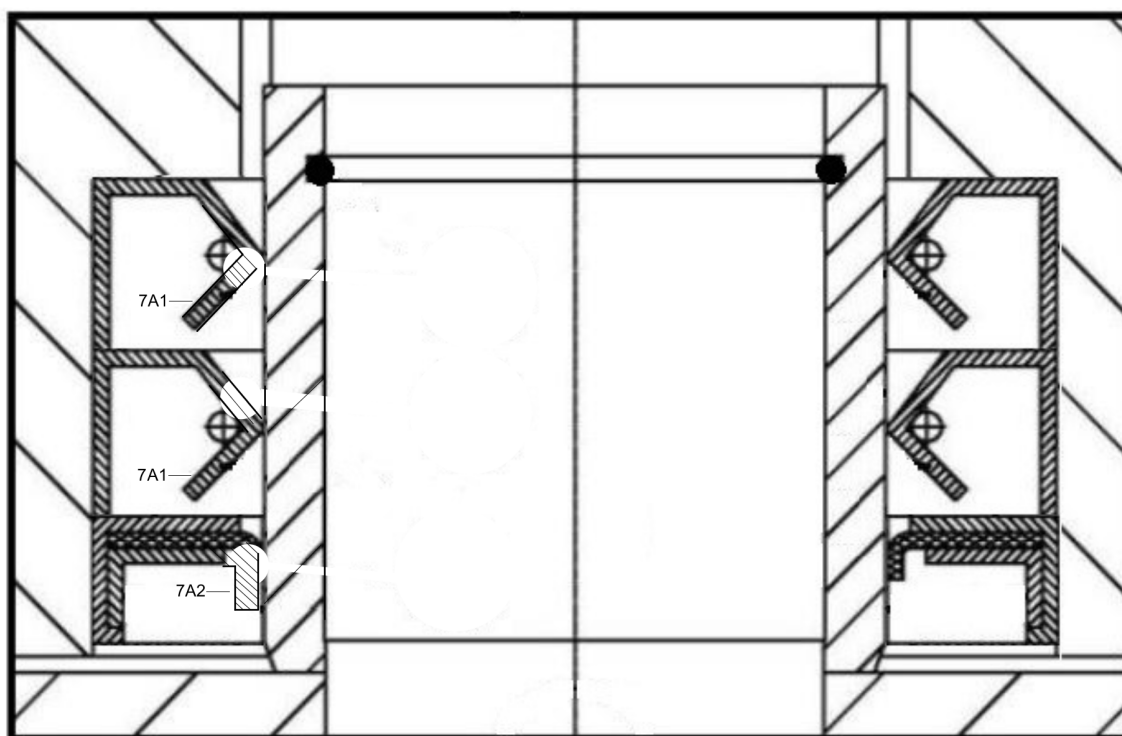


Refer to Parts Online for the most up to date information. The printed information might be outdated.

Wed Apr 22 19:45:21 UTC 2020

Item	Part No.	Name	Qty	L
6A1	3081601627	Cutter knife	1	

## Aggressive environment kit 3081601730



Item	Part No.	Name	Qty	L
-	3081601730	Aggressive environment kit	-	
7A1	3081601690	Seal	2	
7A2	3081601689	Seal	1	
7A3	3081601632	Eyebolt	3	
7A4	3081601684	Plug	1	
7A5	3081601601	Bolt TE M10x30	12	
7A6	3081601603	Bolt TE M10x40	4	
7A7	3081601606	Bolt TE M12x30	13	
7A8	3081601614	Bolt TE M12x50	4	
7A9	3081601610	Bolt TE M12x40	3	
7A10	3081601612	Bolt TE M12x45	3	
7A11	3081601716	Washer M12	7	
7A12	3081601694	Seal washer M10	12	
7A13	3081601696	Seal washer M12	16	
7A14	3081601692	Seal washer	1	
7A15	3081601664	Nut M10	4	
7A16	3081601667	Nut M12	3	
7A17	3081601586	Agitator connector	1	
7A18	3081601590	Agitator nut	1	
7A19	3081601593	Agitator spacer	1	