

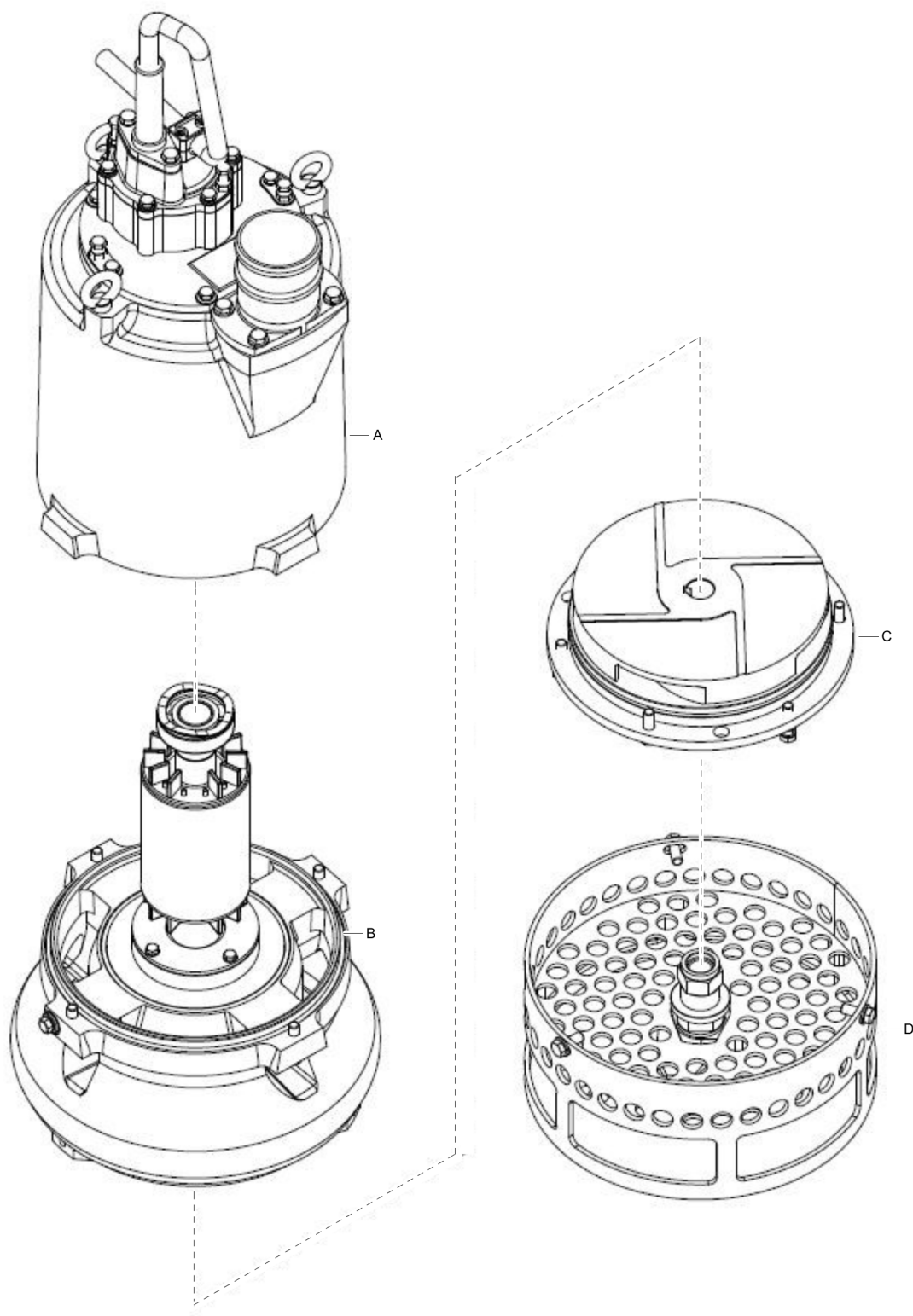
# **WEDA L40N ESF s/n ESF999999 -**

Spare Part List Portable Dewatering Pump

Pump groups	1
Electric motor group	3
Power cable sealing and covers	5
On board electric connections	7
Main shaft	9
Oil chamber	11
Seals	13
Mechanical seal cross section	15
Lip seals cross section	17
Impeller kit	19
Agitator kit	21
Jet-ring system 3081601724	23
Temperature sensor 3081601728	25
Aggressive environment kit 3081601730	27



## Pump groups



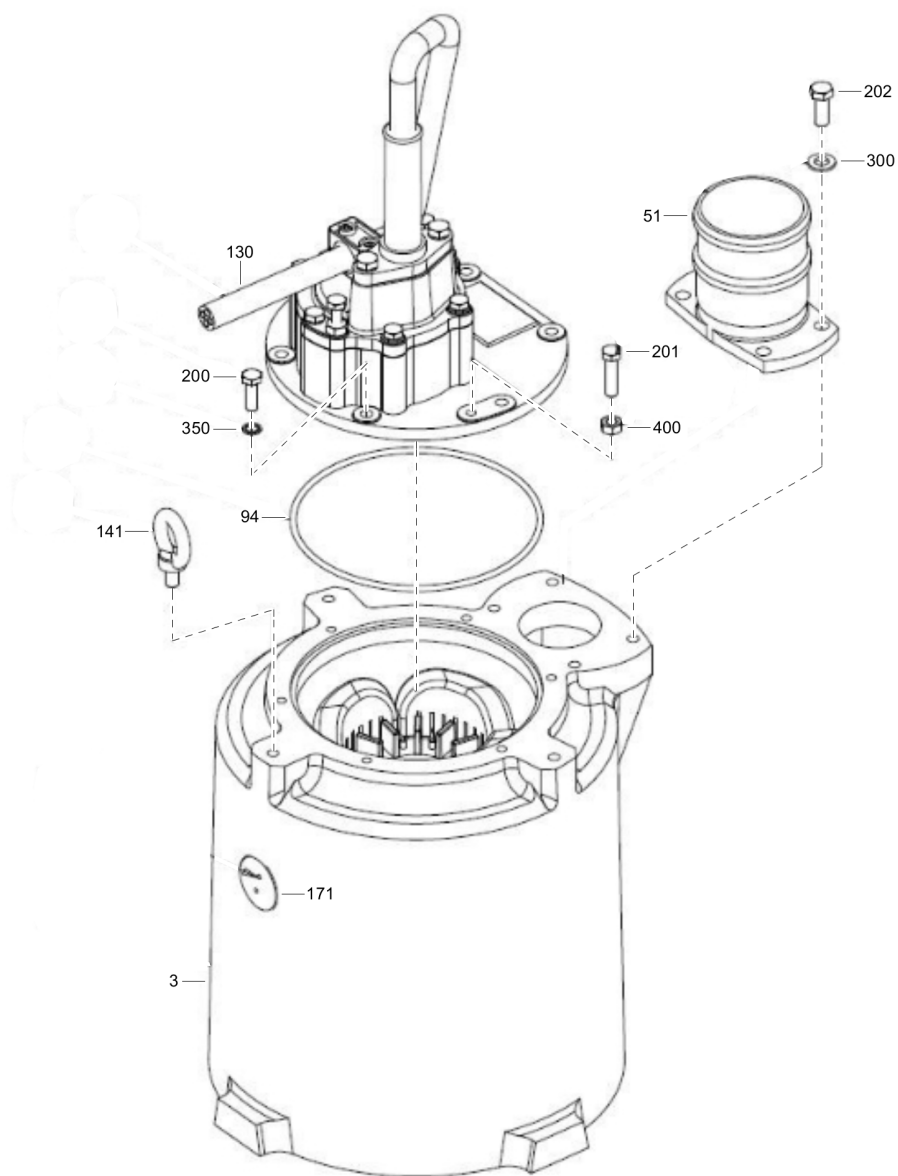
Refer to Parts Online for the most up to date information. The printed information might be outdated.

Thu Apr 23 01:59:34 UTC 2020



Item	Part No.	Name	Qty	L
A	-	Electric motor group	1	
B	-	Oil chamber/Casing group	1	
C	-	Impeller kit	1	
D	-	Agitator kit	1	

## Electric motor group

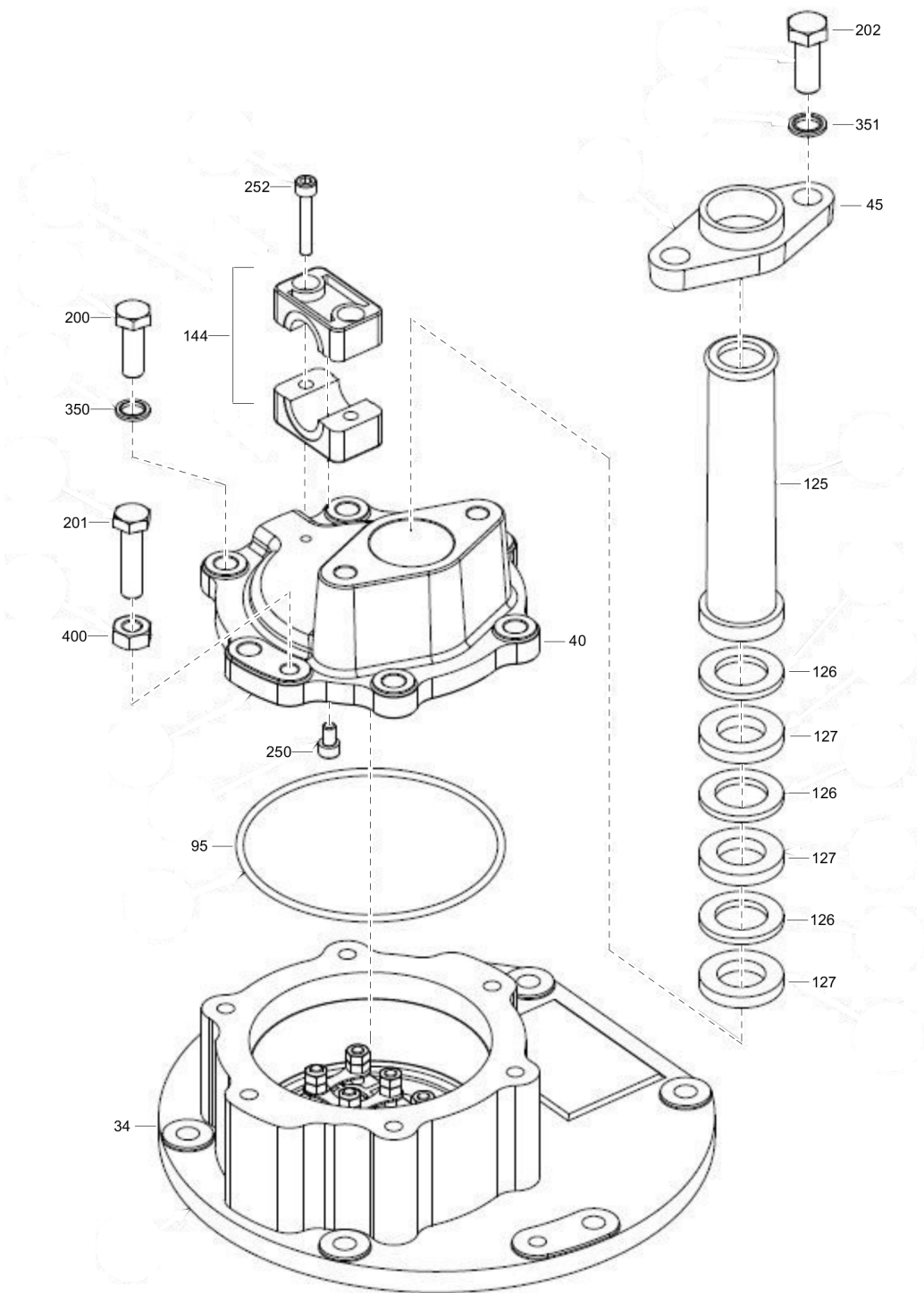


Refer to Parts Online for the most up to date information. The printed information might be outdated.

Thu Apr 23 01:59:35 UTC 2020

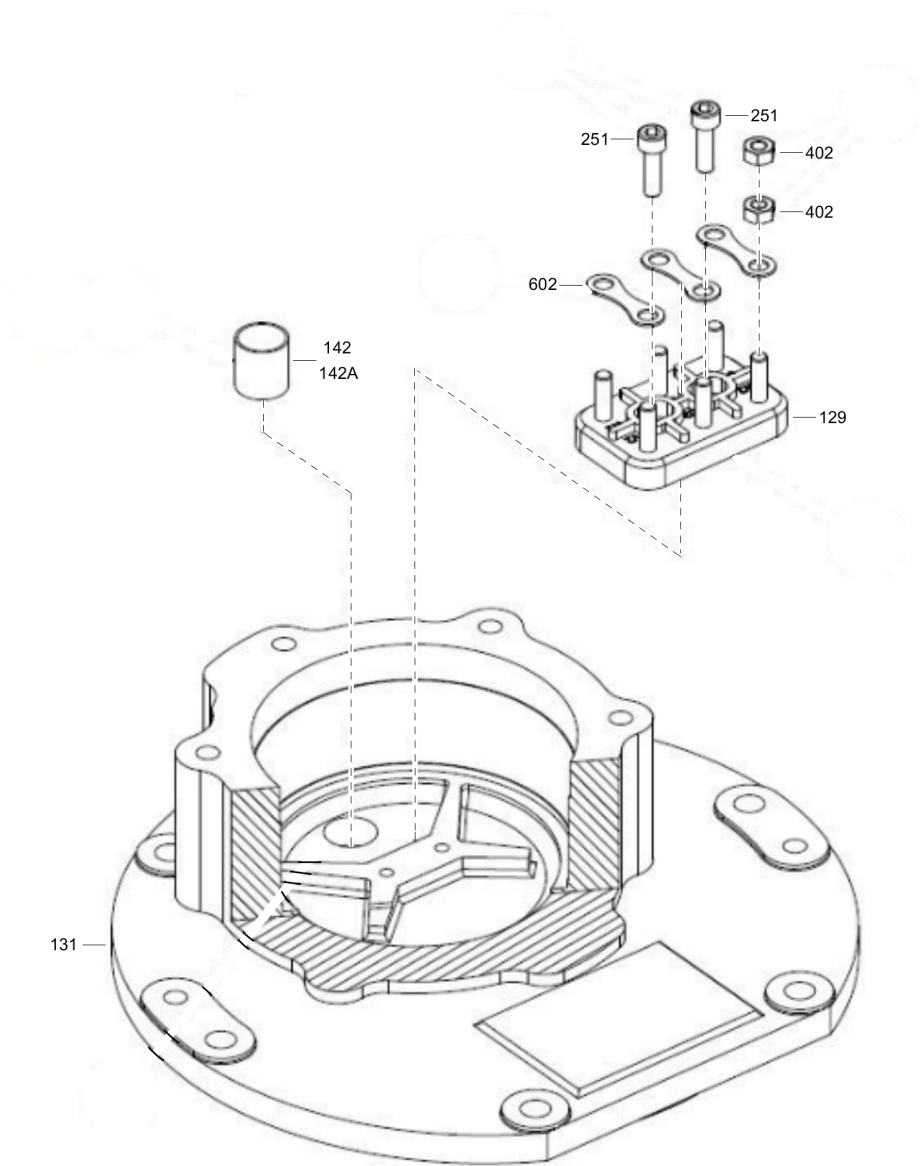
Item	Part No.	Name	Qty	L
3	3081601655	Motor housing + stator	1	
51	3081601629	Discharge adapter	1	
94	3081601673	O-ring	1	
130	4810022531	Power cable (default 20m)	1	
141	3081601631	Eyebolt	3	
171	3081601683	Plug	1	
200	3081601600	Bolt TE M10x30	16	
201	3081601602	Bolt TE M10x40	4	
202	3081601605	Bolt TE M12x30	10	
300	3081601715	Washer M12	7	
350	3081601693	Seal washer M10	16	
400	3081601665	Nut M10	4	

Power cable sealing and covers



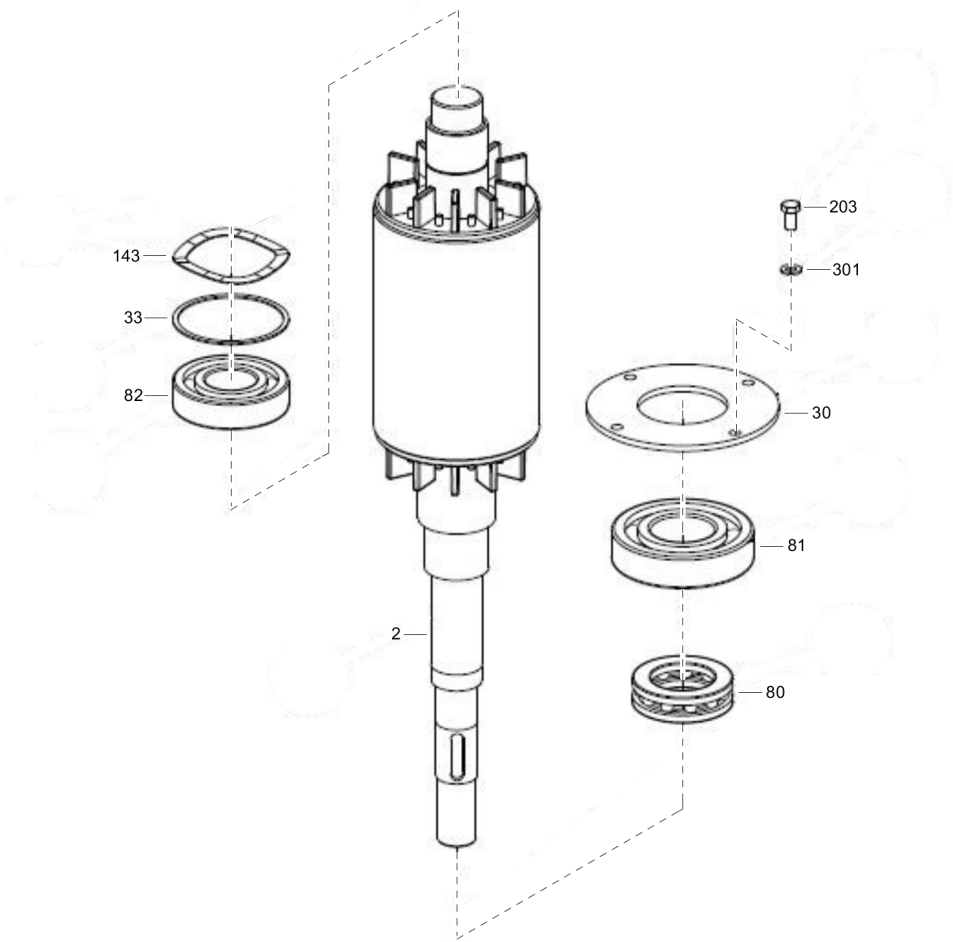
Item	Part No.	Name	Qty	L
34	3081601711	Upper support	1	
40	3081601710	Upper inspection cover	1	
45	3081601687	Power cable gland	1	
95	3081601672	O-ring	1	
125	3081601621	Cable rubber sleeve	1	
126	4810022701	Steel washer	3	
127	4810022700	Rubber washer	3	
144	3081601618	Cable clip	1	
200	3081601600	Bolt TE M10x30	16	
201	3081601602	Bolt TE M10x40	4	
202	3081601605	Bolt TE M12x30	6	
250	3081601597	Bolt TCEI M6x10	4	
252	3081601599	Bolt TCEI M6x35	2	
350	3081601693	Seal washer M10	16	
351	3081601695	Seal washer M12	12	
400	3081601665	Nut M10	4	

On board electric connections



Item	Part No.	Name	Qty	L
129	3081601705	Terminal board	1	
131	3081601620	Cable resin castin	1	
142	3081601619	Cable gland	1	
142A	3081601653	Mastic	1	
251	3081601598	Bolt TCEI M6x20	2	
402	3081601668	Nut M6	12	
602	3081601705	Terminal board	3	

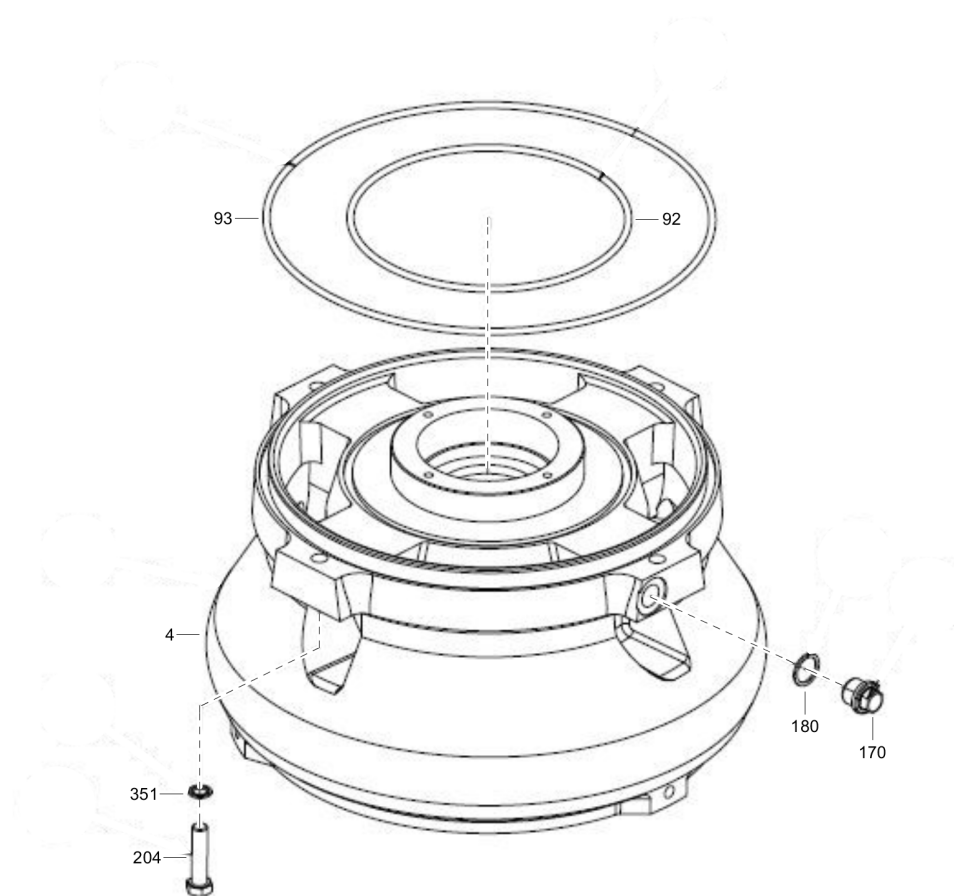
Main shaft





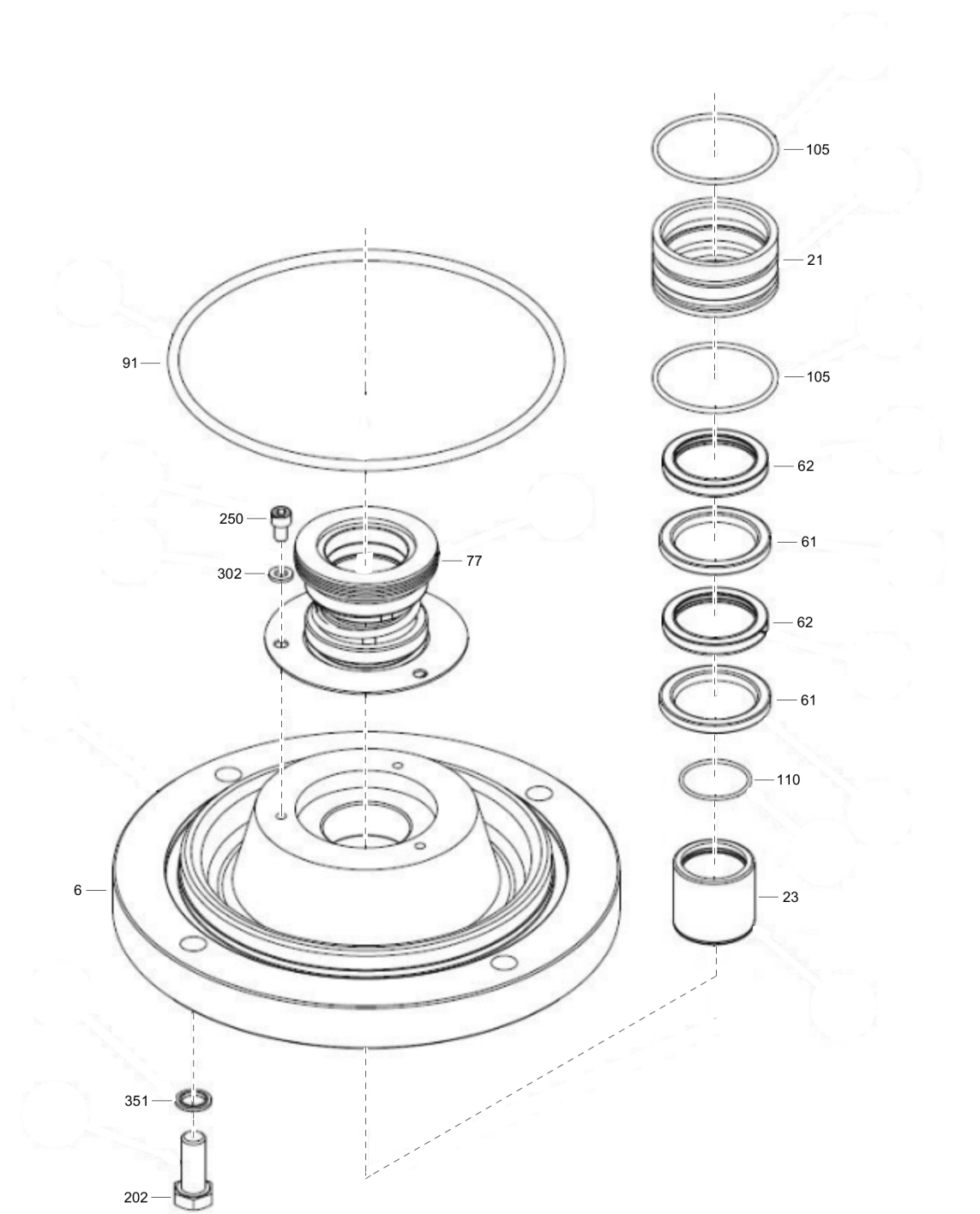
Item	Part No.	Name	Qty	L
2	3081601644	Main shaft + rotor	1	
30	3081601707	Upper bearings flange	1	
33	3081601699	Spring spacer	1	
80	3081601706	Thrust bearing 51209	1	
81	3081601596	Ball bearing 6309 2RS	1	
82	3081601595	Ball bearing 6306 2RS	1	
143	3081601701	Spring washer	2	
203	3081601615	Bolt TE M8x16	4	
301	3081601718	Washer M8	4	

## Oil chamber



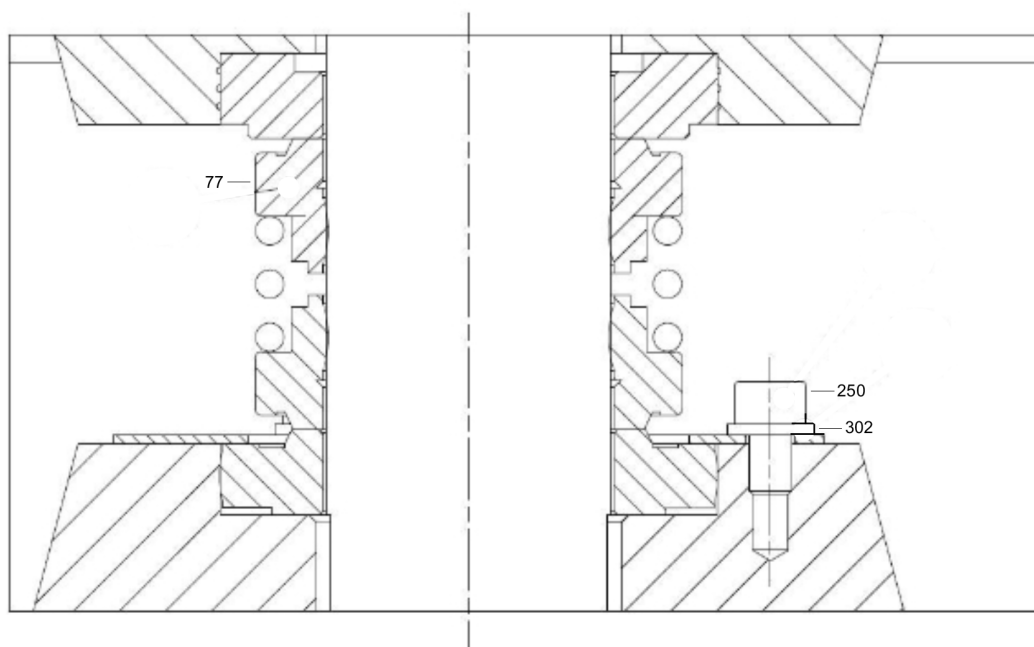
Item	Part No.	Name	Qty	L
4	3081601622	Casing-oil chamber	1	
92	3081601675	O-ring	1	
93	3081601674	O-ring	1	
170	3081601682	Nozzle	1	
180	3081601625	Copper washer	1	
204	3081601613	Bolt TE M12x50	4	
351	3081601695	Seal washer M12	12	

Seals



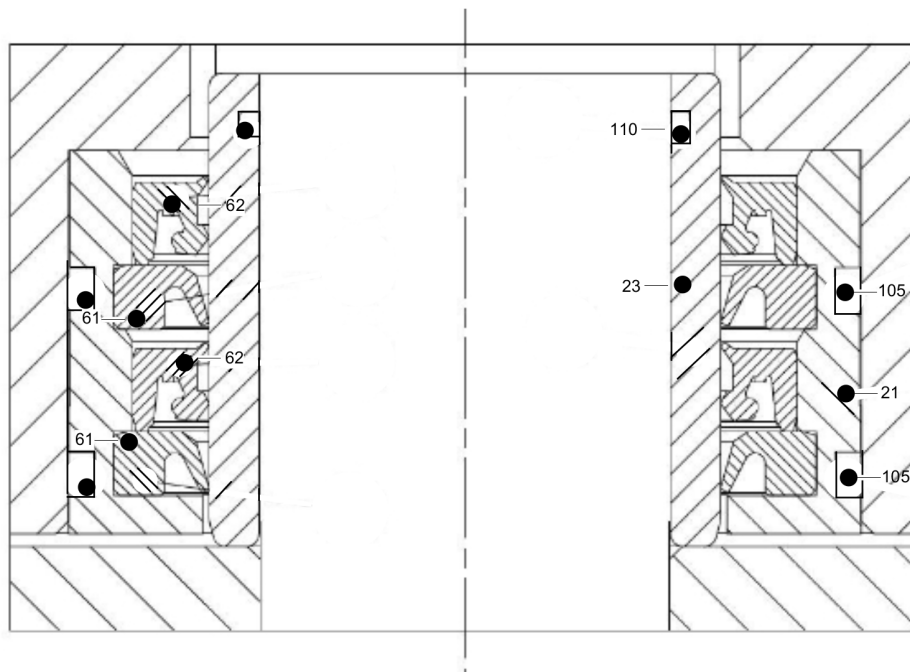
Item	Part No.	Name	Qty	L
6	3081601714	Upper wear plate	1	
21	4810022786	Lower seal housing	1	
23	3081601642	Lower shaft sleeve	1	
61	4810022785	Seal	2	
62	4810022577	Seal	2	
77	3081601654	Mechanical seal	1	
91	3081601677	O-ring	1	
105	3081601670	O-ring	2	
110	3081601671	O-ring	1	
202	3081601605	Bolt TE M12x30	6	
250	3081601597	Bolt TCEI M6x10	4	
302	3081601717	Washer M6	3	
351	3081601695	Seal washer M12	12	

## Mechanical seal cross section



Item	Part No.	Name	Qty	L
77	3081601654	Mechanical seal	1	
250	3081601597	Bolt TCEI M6x10	4	
302	3081601717	Washer M6	3	

## Lip seals cross section



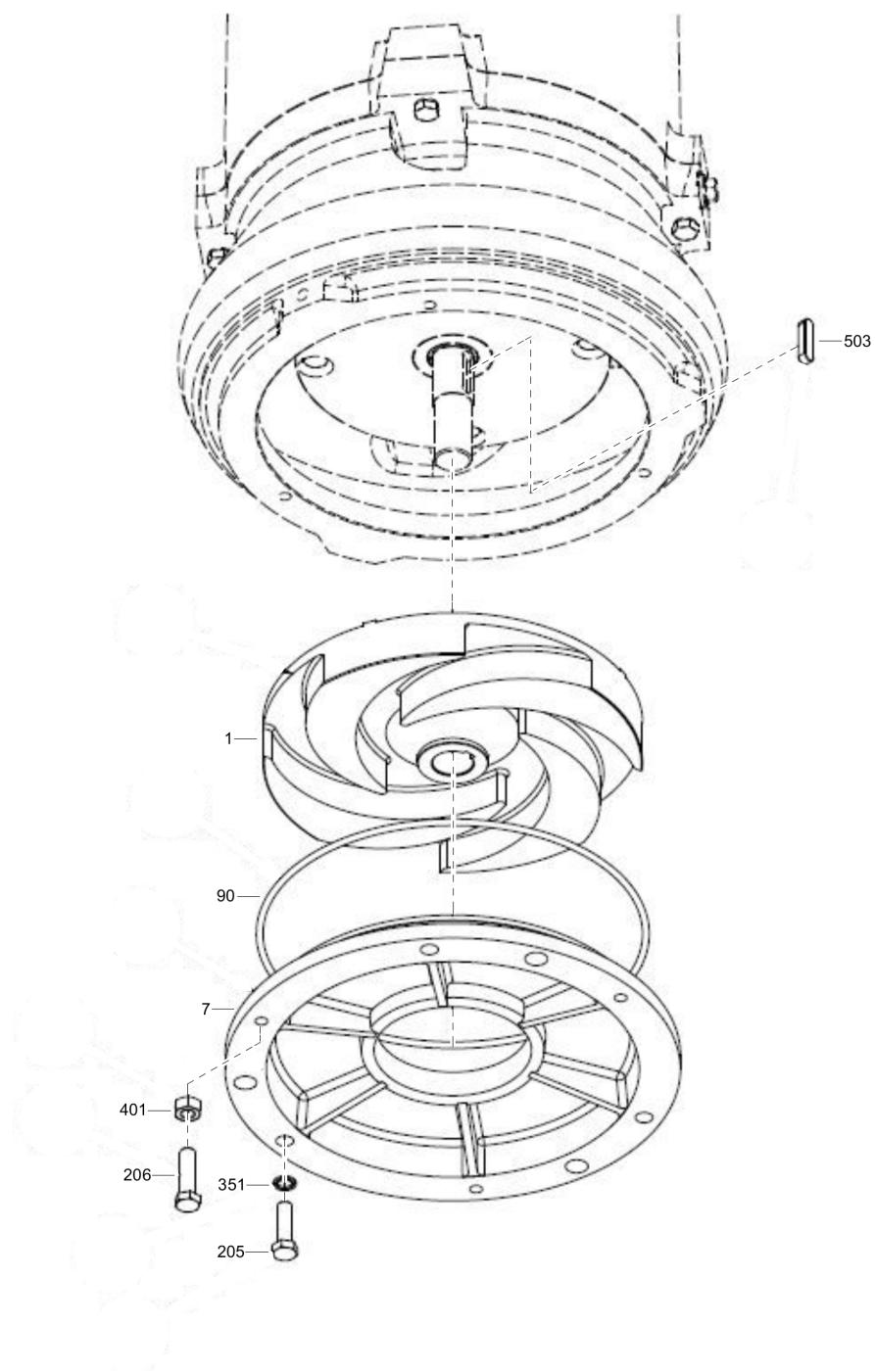
Refer to Parts Online for the most up to date information. The printed information might be outdated.

Thu Apr 23 01:59:37 UTC 2020



Item	Part No.	Name	Qty	L
21	4810022786	Lower seal housing	1	
23	3081601642	Lower shaft sleeve	1	
61	4810022785	Seal	2	
62	4810022577	Seal	2	
105	3081601670	O-ring	2	
110	3081601671	O-ring	1	

## Impeller kit

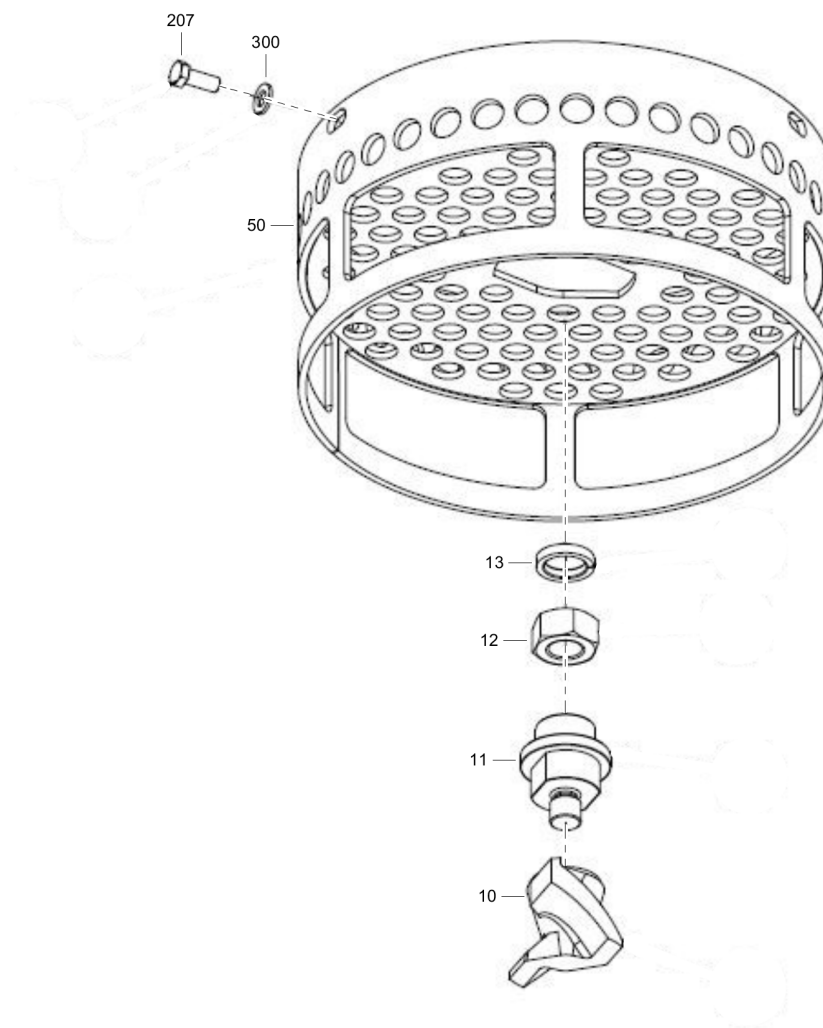


Refer to Parts Online for the most up to date information. The printed information might be outdated.

Thu Apr 23 01:59:38 UTC 2020

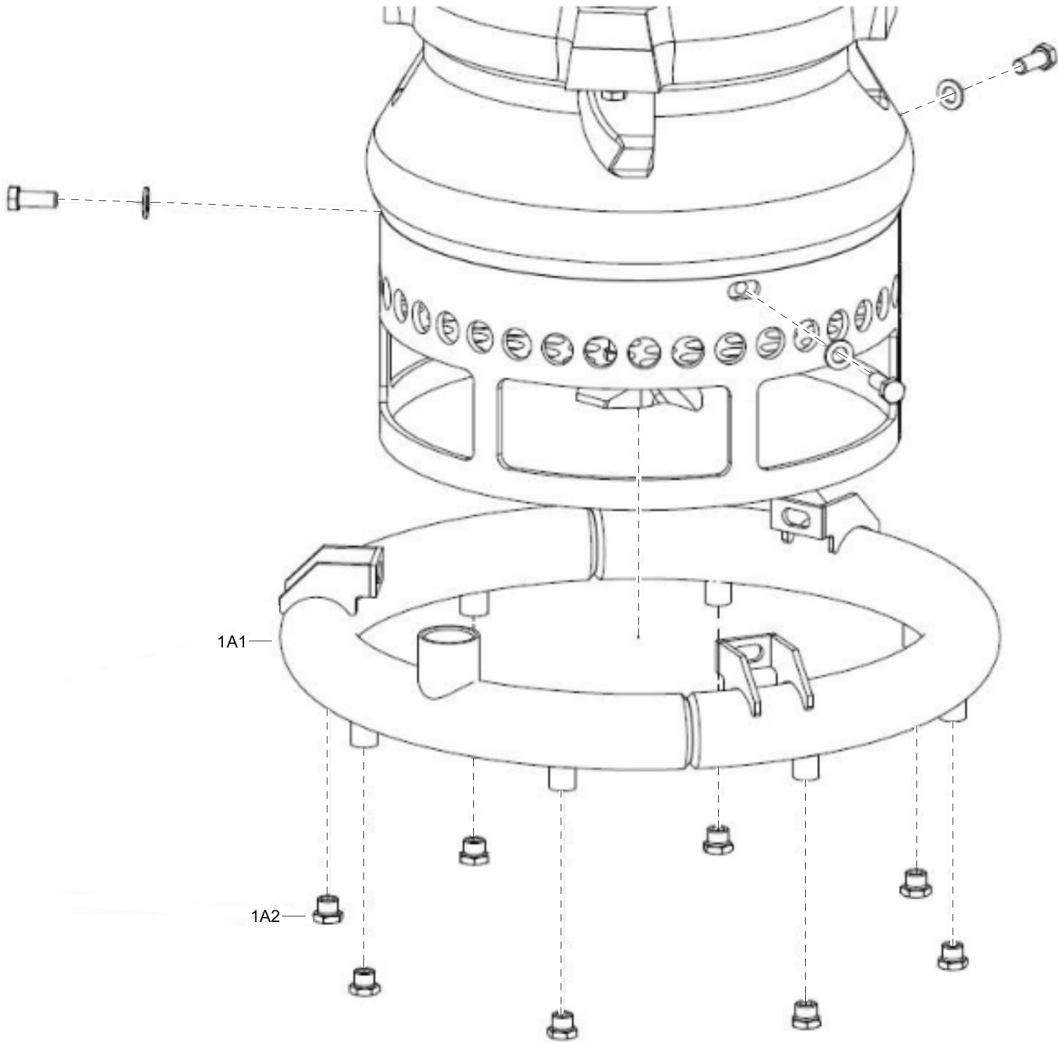
Item	Part No.	Name	Qty	L
1	-	Impeller	-	
-	3081601633	Impeller 50Hz	1	
-	3081601636	Impeller 60Hz	1	
7	3081601643	Lower wear plate	1	
90	3081601676	O-ring	1	
205	3081601607	Bolt TE M12x35	3	
206	3081601609	Bolt TE M12x40	3	
351	3081601695	Seal washer M12	12	
401	3081601666	Nut M12	3	
503	3081601640	Key	1	

## Agitator kit



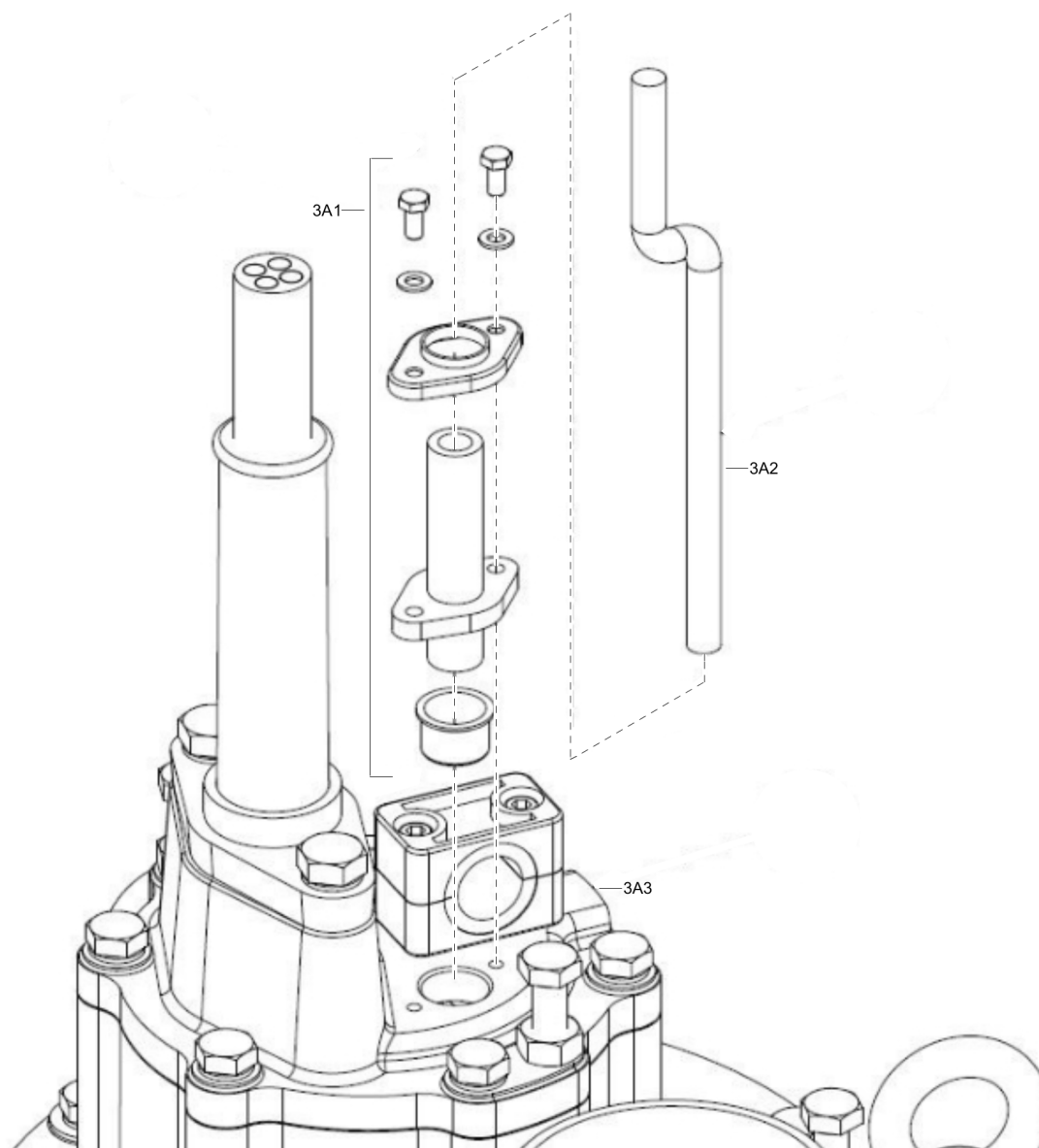
Item	Part No.	Name	Qty	L
10	3081601581	Agitator	1	
11	3081601584	Agitator connector	1	
12	3081601588	Agitator nut	1	
13	3081601592	Agitator spacer	1	
50	3081601703	Strainer	1	
207	3081601604	Bolt TE M12x25	3	
300	3081601715	Washer M12	7	

Jet-ring system3081601724



Item	Part No.	Name	Qty	L
-	3081601724	Jet-ring system	-	
1A1	3081601639	Jet-ring frame	1	
1A2	3081601682	Nozzle	8	

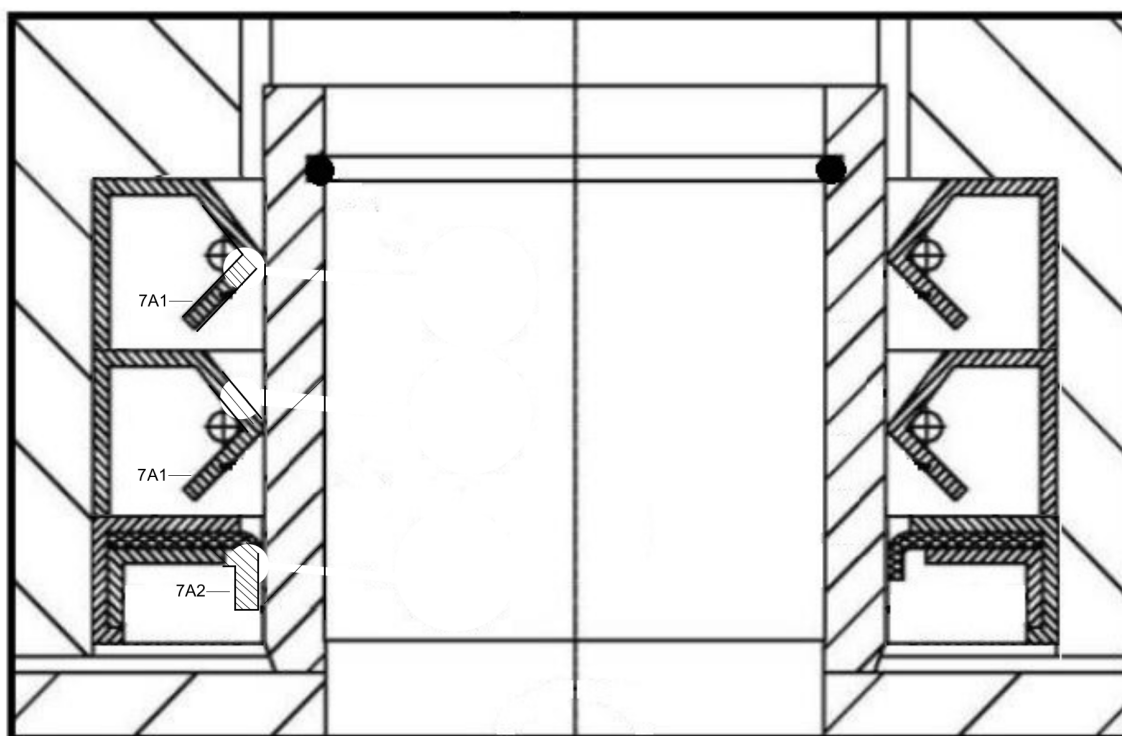
## Temperature sensor 3081601728





Item	Part No.	Name	Qty	L
-	3081601727	Compensation system	-	
3A1	3081601698	Signal cable gland	1	
3A2	3081601697	Signal cable (default 20 m)	1	
3A3	3081601709	Upper inspection cover	1	

## Aggressive environment kit 3081601730



Item	Part No.	Name	Qty	L
-	3081601729	Aggressive environment kit	-	
7A1	3081601690	Seal	2	
7A2	3081601689	Seal	1	
7A3	3081601632	Eyebolt	3	
7A4	3081601681	Plug	1	
7A5	3081601601	Bolt TE M10x30	16	
7A6	3081601603	Bolt TE M10x40	4	
7A7	3081601606	Bolt TE M12x30	9	
7A8	3081601614	Bolt TE M12x50	4	
7A9	3081601608	Bolt TE M12x35	3	
7A10	3081601610	Bolt TE M12x40	3	
7A11	3081601716	Washer M12	7	
7A12	3081601694	Seal washer M10	16	
7A13	3081601696	Seal washer M12	12	
7A14	3081601691	Seal washer	1	
7A15	3081601664	Nut M10	4	
7A16	3081601667	Nut M12	3	
7A17	3081601583	Agitator connector	1	
7A18	3081601587	Agitator nut	1	
7A19	3081601591	Agitator spacer	1	