



OF.ME.R. (Itl.)  
Milan, Italy

# REBAR

PROCESSING  
MACHINERY

**YOUR PARTNER, SINCE 1984**



OF.ME.R. (Itd.) is an Italian company specialized in the manufacturing of a complete range of professional machinery and equipment to process concrete reinforcing steel bars, intended for construction sites, precast companies and small and medium-sized rebar manufacturers.

Founded in 1984, the company experienced a rapid growth in the 90's and 00's, thanks to the strong building development that characterized Europe, North Africa and the Middle East in those years and to important strategic agreements with main operators in the sector.

Currently OF.ME.R. remains the market leader in these areas, and is carrying out a development plan to strengthen and implement its global presence.



OF.ME.R. team in 1984

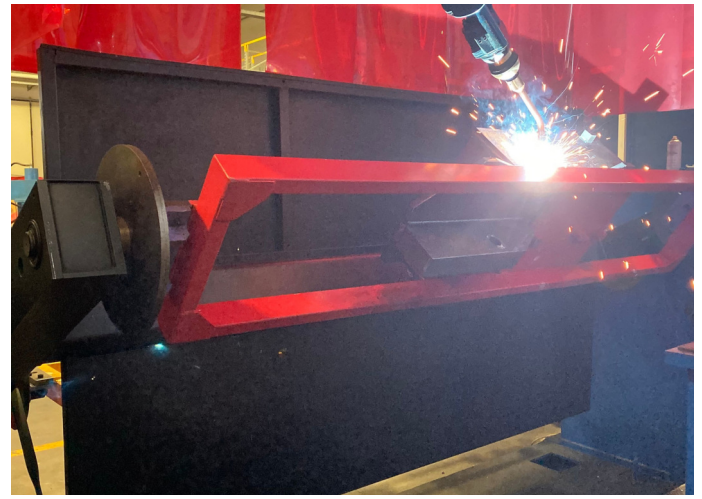
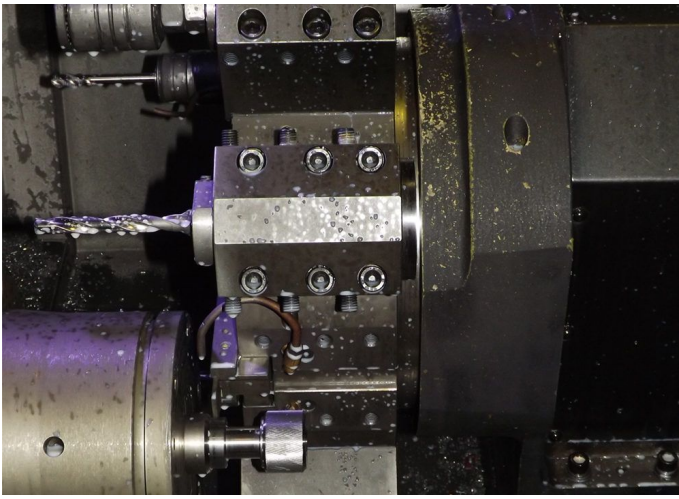


Scan this QR code, to experience a 360° virtual tour in our factory,

Google Chrome recommended.



OF.ME.R. major markets



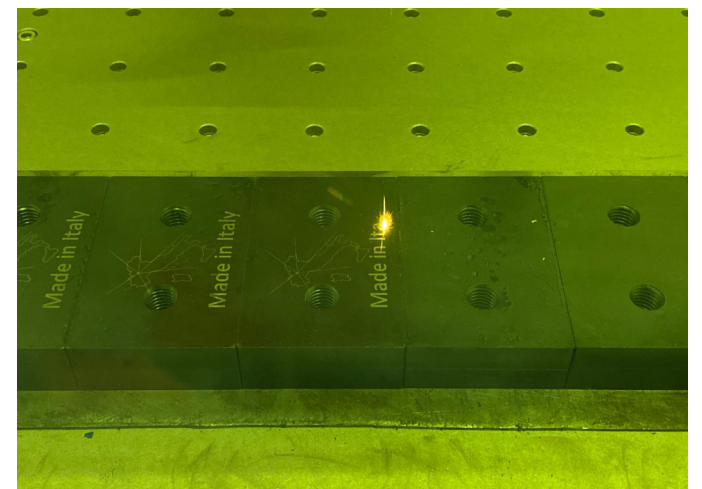
## OUR FACTORY

OF.ME.R. operates in a modern production plant of its own, located in Trezzo sull'Adda, Milan Area, a strategic position with respect to the main ports and airports and neighboring countries.

The facility covers a total area of 2000 square meters, where are installed state-of-the-art systems enabling the internal production of most of the components needed to produce the machines.

Every single product is subject to accurate quality controls, both during the production cycle and before delivery.

For the painting, carried out in an advanced facility located inside the plant, only water-based paints are used, that prevent machines from rust and provide an excellent performance in full respect of the environment.



# OUR STRENGTHS

OF.ME.R. is focused on satisfying Customers' growing expectations in terms of quality, costs and time and particularly careful in granting an impeccable assistance in phase of sales and after-sales, in continuity to the work on site.

Almost all machines models and devices are usually in prompt delivery (max. 10 days for a full container order).

We keep a complete stock of home made and high quality spare parts, also for discontinued models.

The main part of consumable components is produced in our factory. The electrical motors, specifically realized by an Italian manufacturer who supplies them to us in exclusivity, are designed to optimize and enhance the processing capacity of each machine, as well as the electrical components, of the best brands available on the market.

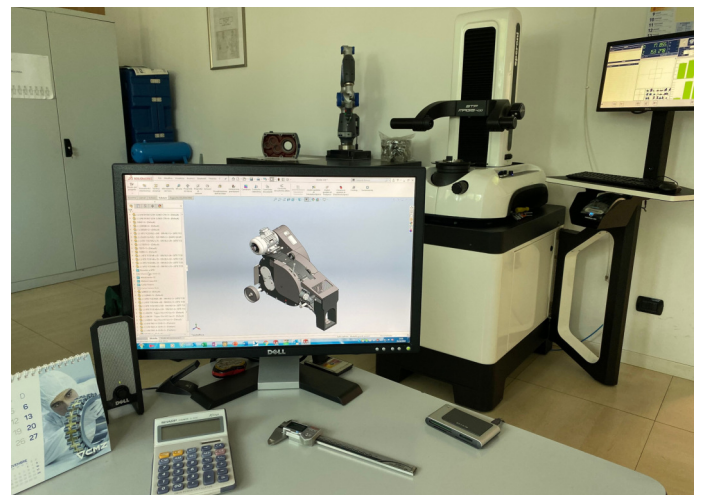
No less important than the productive aspect it is, for OF.ME.R., the human factor.

Most of our employees chose to stay with us after post-school internship, receiving full and specific training for their role.

Our technicians and sales staff ensure availability even outside working hours, offering the best possible support also through the chat in our website.

But our flagship is our in-house design and development department, constantly working to both improve products in technology, safety and ease of use and to find new solutions to satisfy an increasingly demanding and competitive market.

We always welcome with pleasure those who want to visit us, and know more closely our reality.



# THE LINE EVO

During the last twelve years, we differentiated ourselves from our competitors by creating a new line of machines, result of our long experience in production and sale of these products combined with the most modern technology.

The first project, between 2007 and 2011, involved our Bending and Combined Machines. The main objective was to strengthen the cutting area, in previous model too often subject to unsoldering. We succeeded by creating a spheroidal cast iron monobloc including reduction gear and cutter.

Between 2010 and 2015 the Rebar Cutting Machines Evo line was introduced. It is definitely our most satisfying product. The machine body and gears have been completely redesigned, giving a greater cutting force, with less impact on the mechanics.

Since this product was introduced in our line, the problems related to mechanics have almost totally disappeared.

The new born in OF.ME.R. home is the Spiral Machine CAL35 Evo, presented in occasion of the Bauma Fair 2019.



# REBAR CUTTING MACHINES



Model	Engine Hp/kW	Capacity of cut in mm						Weight kg
		R = 65 kg/mm <sup>2</sup>			R = 85 kg/mm <sup>2</sup>			
		1 Ø	2 Ø	3 Ø	1 Ø	2 Ø	3 Ø	
<b>C34 Evo 1-ph.</b>	3/2.2	28	20	16	26	18	14	235
<b>C34 Evo 3-ph.</b>	3/2.2	28	20	16	26	18	14	235
<b>C38 Evo 3-ph.</b>	4/3	30	22	18	28	20	16	245
<b>C44 Evo 3-ph.</b>	4/3	34	28	22	32	22	18	400
<b>C54 Evo 3-ph.</b>	5.5/4	46	32	24	40	30	22	630
<b>C56 Evo 3-ph.</b>	7.5/5.5	48	34	26	42	32	24	640
<b>C74 Evo 3-ph.</b>	10/7.5	64	44	36	54	36	30	1.280



## Standard Equipment:

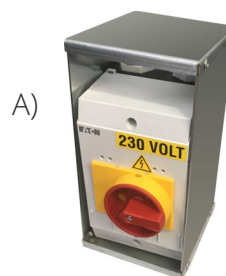
- 2 x blades in hardened steel;
- 1 x set of Allen keys;
- 1 x industrial plug.

## Optional Equipment:

A) Galvanized Shell for thermic switch  
Prevents the magneto-thermic switch from damages in the event of a collision.  
Suitable to all Cutting Machines models

B) Phase Sequence Relay  
Prevents to turn the machine on in the event of a connection error (1 phase missing or inverted phases), thus avoiding possible damages.  
Suitable to all 3-phase Cutting Machines

C) Galvanized Base with Integrated Pedal  
Enables the operator to keep a correct posture during the work.  
Suitable to: C34-C38-C44-C54-C56 Evo



*Other optional equipment available at page 10 (items H-I-L)*

# STIRRUP BENDING MACHINES



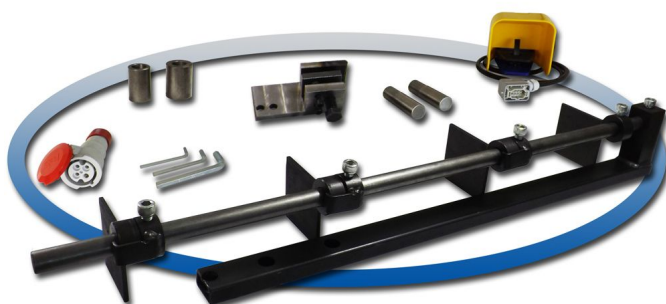
Model	Engine Hp/kW	Capacity of bend in mm R = 85 kg/mm <sup>2</sup>						Weight kg
		1 Ø	2 Ø	3 Ø	4 Ø	7 Ø	10 Ø	
ST16 1-ph.	2/1.5	16	12	10	8	6	4	170
ST16 3-ph.	2/1.5	16	12	10	8	6	4	170
PS16 3-ph.	2/1.5	16	12	10	8	6	4	280

## Standard Equipment for ST16:

- 1 x checking block;
- 1 x set of bushes Ø50-60mm;
- 1 x industrial plug;
- 1 x set of Allen keys;
- 2 x reversal pins;
- 1 x set of pins (6 pcs)
- 1 x electrical pedal
- 1 x stirrup linear measurer

## Standard Equipment for PS16:

- 1 x set of bushes Ø50-60mm;
- 1 x stirrup bending bracket;
- 1 x set of pins (2 pcs)
- 1 x electrical pedal
- 1 x industrial plug;
- 1 x electrical pedal;
- 1 x set of Allen keys;
- 1 x stirrup linear measurer
- Angle Control El. Panel



## Optional Equipment:

Stirrup bending tool  
Permits to align and bend more bars together (max. Ø12mm).  
Suitable to: mod. ST16

*Other optional equipment available at page 10 (items H - L)*



# REBAR BENDING MACHINES



## Standard Equipment:

1 x checking block; 1 x set of bushes;  
1 x industrial plug; 1 x set of Allen keys;  
2 x reversal pins; 1 x set of pins;  
1 x electrical pedal.

Model	Engine Hp/kW	Capacity of bend in mm						Weight kg
		R = 65 kg/mm <sup>2</sup>			R = 85 kg/mm <sup>2</sup>			
		1 Ø	2 Ø	3 Ø	1 Ø	2 Ø	3 Ø	
P34 Evo 1-ph.	3/2.2	30	22	18	28	20	16	285
P34 Evo 3-ph.	3/2.2	30	22	18	28	20	16	285
P38 Evo 3-ph.	4/3	34	26	20	32	24	18	365
P44 Evo 3-ph.	4/3	38	30	24	36	28	22	500
P54 Evo 3-ph.	5.5/4	44	34	28	40	32	24	585
P56 Evo 3-ph.	7.5/5.5	46	36	30	42	34	26	710
P74 Evo 3-ph.	10/7.5	60	42	34	50	36	30	1.600

# COMBINED MACHINES



## Standard Equipment:

1 x checking block; 1 x set of bushes;  
1 x industrial plug; 1 x set of Allen keys;  
2 x reversal pins; 1 x set of pins;  
1 x electrical pedal; 1 x set of blades.

Model	Engine Hp/kW	Capacity of cut/bend in mm		Weight kg
		R = 65 kg/mm <sup>2</sup>	R = 85 kg/mm <sup>2</sup>	
		1 Ø	1 Ø	
TP25.32 Evo 1-ph.	3/2.2	24/28	22/26	285
TP25.32 Evo 3-ph.	3/2.2	24/28	22/26	285
TP32.36 Evo 3-ph.	4/3	28/34	25/32	365
TP40.46 Evo 3-ph.	5.5/4	32/38	30/36	620



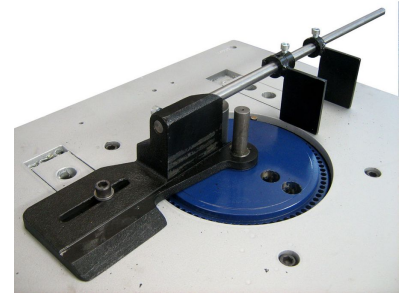
## Optional Equipment:

### A) Unique Stirrup Bending Tool and Linear Measurer

This device allows to produce stirrups with rebar max. Ø12mm with a high precision and a considerable saving of time.

Suitable to: all models of Bending & Combined Machines

A)



### B) Roller benches

Allow to load the material and keep it close to the machine for processing.

Minimum demandable length: 2 meters, that can be extended with additional modules of 1 meter as for Customer's demand, to be specified in phase of order.

Suitable to: all models of Machines

B)



### C) Working top "B Type"

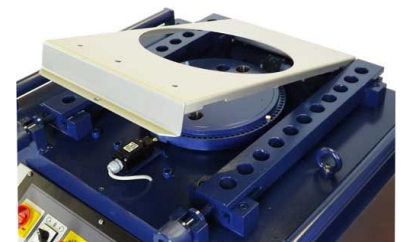
An alternative to the classic worktop that allows easier cleaning of the bending area and faster maintenance of the limit switches.

Suitable to:

Bending Machines P38-P44-P54-P56-P74 Evo

Combined Machines TP32/36-TP40/46 Evo

C)



### D) Arm for large radii

This device allows to use bushes with superior diameters compared to the machine turning plate, obtaining wider curving radii.

Suitable to: all models of Bending & Combined Machines

D)



### E) Spiral device

An optional dedicated to those who occasionally realize ribs, beams, columns and any other structure requiring a circular armature with a small diameter bar (max. Ø16mm).

Suitable to:

Bending Machines P34-P38-P44-P54-P56 Evo

Combined Machines TP25/32-TP32/36-TP40/46 Evo

E)



### F) Electrical Panel Angle Control - 20 bends

This panel allows the storage of a maximum of 20 bending angles in free sequence and ensure the maximum precision thanks to an optical sensor able to stop the machine when the stored amplitude is reached.

Suitable to: all 3-phase Bending and Combined Machines

F)



### G) Electrical Panel Basic Angle Control - 6 bends

Thanks to this special electronic card, the operator can memorize with a simple operation up to 6 bending angles in sequence.

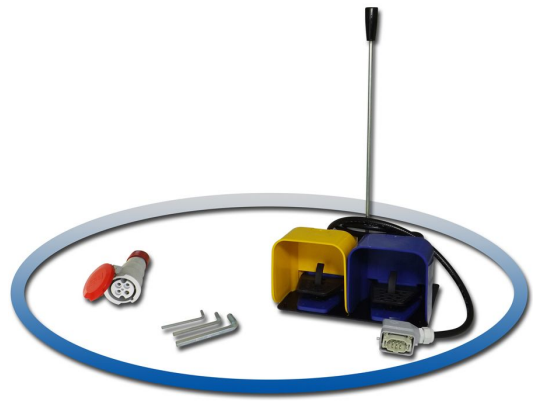
Suitable to: all 3-phase Bending and Combined Machines

*Other optional equipment available at page 10 (items H - I - L)*

G)



# SPIRAL MACHINE CAL35 Evo



## Standard Equipment:

1 x industrial plug; 1 x set of Allen keys;  
1 x double electrical pedal, to activate the towing rollers clockwise or counterclockwise.

Model	Engine Hp/kW	Capacity of bend in mm R = 85 kg/mm <sup>2</sup>		Weight kg
		Min.	Max.	
<b>CAL35 3-ph.</b>	1-Speed 5/3.7 2-Speed 5/4.5	10mm	32mm	356

## Optional Equipment:

A) Small diameters kit

Allows to work small diameters wire (from Ø 6-8mm), even from coil.

Suitable to: Spiral Machine CAL35 Evo

B) Motorized regulation of the curving radius

Thanks to a 2-speed motor mounted on the side of the machine at the height of the knob, the operator can adjust with extreme precision the bending diameter to be made, more quickly and with less effort.

Suitable on: Spiral Machine CAL35 Evo

H) 5-pin plug

Required in some European Countries

Suitable to: All 3-phase machines

I) Grease gun 500 CC

For a faster and easier maintenance and greasing of the mechanical components.

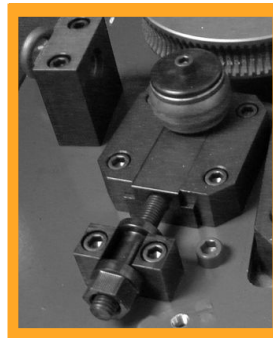
Suitable to: Combined Machines, Cutting Machines, Spiral Machine CAL35 Evo

L) Waterproof cover

Prevents the machine from bad weather when used outdoors.

Suitable to: All models, except C74/P74

A)



B)



H)



I)



L)





# SPECIAL PROJECTS

Thanks to experience and continuous sharing of information with our customers, we are constantly at work to improve the quality of work on site.

Our Customers often submit to us projects involving modifications to our standard models, or the creation of customized equipment.

Our Project department welcomes every challenge with enthusiasm, creating tailor-made solutions and making our machines suitable for manifold applications.

## CERTIFICATIONS

According to a recent estimate, OF.ME.R. machines are currently operating in more than 90 Countries all over the World.

Due to strict and specific laws concerning the technical and safety features applied in each Country, machinery are often subject to a mandatory pre-export inspection.

OF.ME.R. gives the certainty of receiving products made fully in compliance with the regulations in force in your Country.

Address your requirements to our experts. You will receive a specific and suitable solution without obligation.



Cutting Machine with motor and panel compliant to norms UL (for US market)



Combined Machine compliant to norms NR12 (for the Brazilian market)





via Achille Grandi 19  
Trezzo sull'Adda, Milan  
Italy



+39 (0)2 9090134



info@ofmer.it



ofmer.com



OF.ME.R. (ItD.)  
Milan, Italy



Follow us on



/ofmersrl