

2

MANUAL

EDILGRAPPA
SINGLE-ACTING
INTERCHANGEABLE HEAD
P22
SPARE PARTS

INDEX

0 SPARE PARTS AND ACCESSORIES CATALOGUE	3
0.01 ORDERING INFORMATION.....	3
0.02 MECHANICAL COMPONENTS	3
COMPONENTS OF P22 BENDING HEAD P/N 1.50.1915.....	4

0 SPARE PARTS AND ACCESSORIES CATALOGUE



THE COMPANY DECLINES ALL LIABILITY FOR INJURY TO PEOPLE OR DAMAGE TO PROPERTY IF TECHNICAL ASSISTANCE IS NOT PERFORMED BY QUALIFIED AND AUTHORISED STAFF.



FOR TECHNICAL ASSISTANCE AND MAINTENANCE, CONTACT AN AUTHORISED SERVICE CENTRE OR WRITE TO cut@edilgrappa.com.

0.01 ORDERING INFORMATION

Orders for spare parts must be accompanied by the following information:

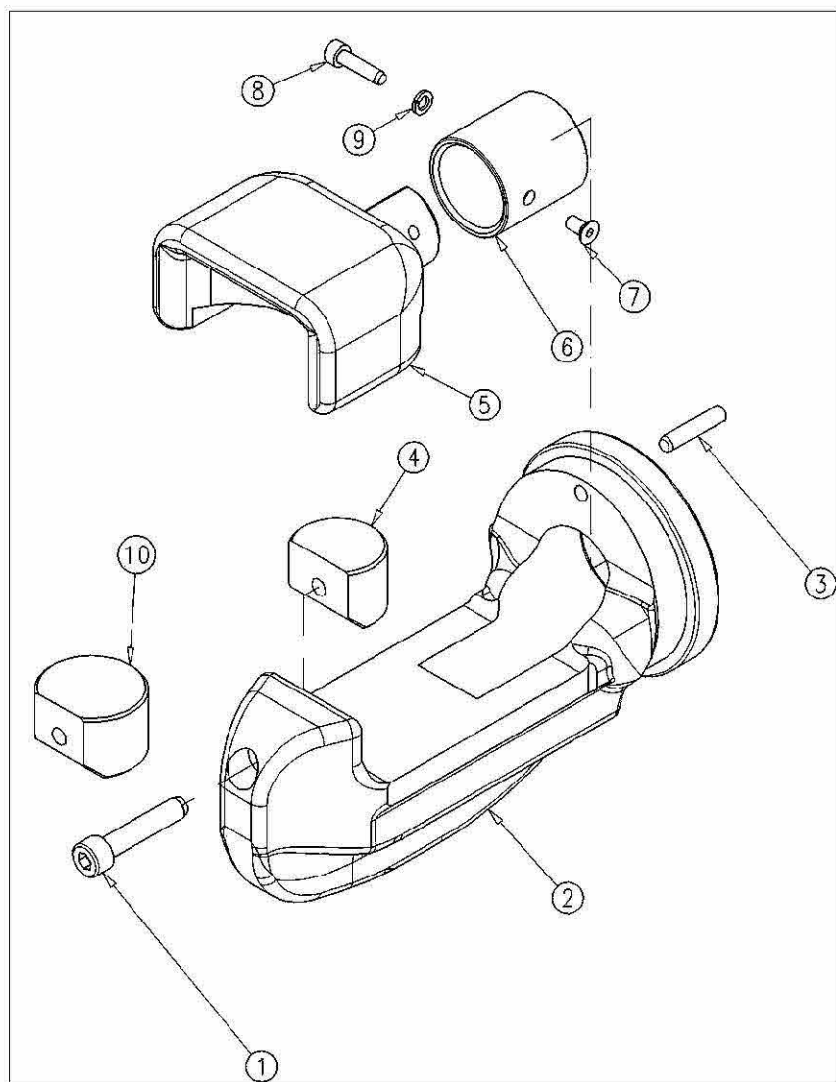
1. Type of equipment
2. Serial number indicated on CE plate (see MU22N machine body manual)
3. Part number or position in exploded drawing
4. Quantity
5. Revision status indicated on the back cover of the manual.

The Manufacturer can only supply the appropriate spare part if the required data is complete, since subsequent improvements may have entailed structural variations to the equipment and therefore to the spare parts.

0.02 MECHANICAL COMPONENTS

The following page contains an exploded diagram of the head, complete with codes, descriptions and quantities of each component

COMPONENTS OF P22 BENDING HEAD P/N 1.50.1915



COMPONENTS OF P22 BENDING HEAD P/N 1.50.1915

POS	P/N	ITEM	PCS
1	1.60.703	SCREW	1
2	1.10.4395	INTERCHANGEABLE HEAD	1
3	1.10.185	CYLINDRICAL PIN	1
4	1.10.058	SMALL CAM FOR BENDING UP TO A MAXIMUM DIAMETER OF 22mm	1
5	1.10.056	SLIDING DIE	1
6	1.10.4386	BUSH	1
7	1.60.817	SCREW	1
8	1.60.105	SCREW	1
9	1.60.314	WASHER	1
10	1.10.057	LARGE CAM FOR BENDING UP TO A MAXIMUM DIAMETER OF 14 mm	1

NOTES

NOTES

EDILGRAPPA Srl

**MACHINES AND EQUIPMENT FOR THE BUILDING TRADE, INDUSTRY
AND RESCUE**

31030 BORSO DEL GRAPPA (TV) - ITALY - Via Callesello, 4
Tel. 0423 910122 – Fax 0423 542122

E-mail: cut@edilgrappa.com <http://www.edilgrappa.com>