

## Spare Parts Catalogue

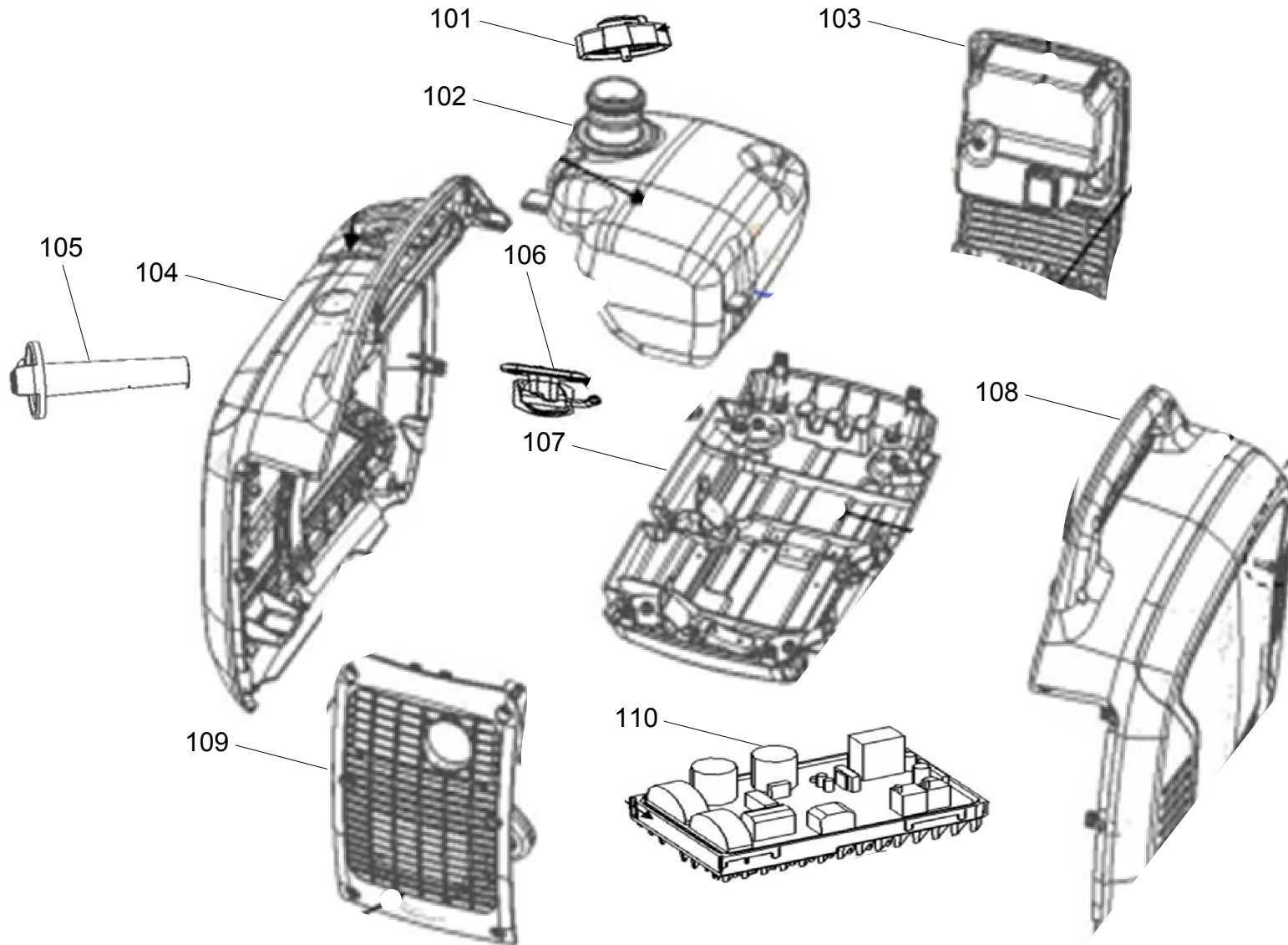
# P2000i-YAMAHA

Power systems | Generating sets

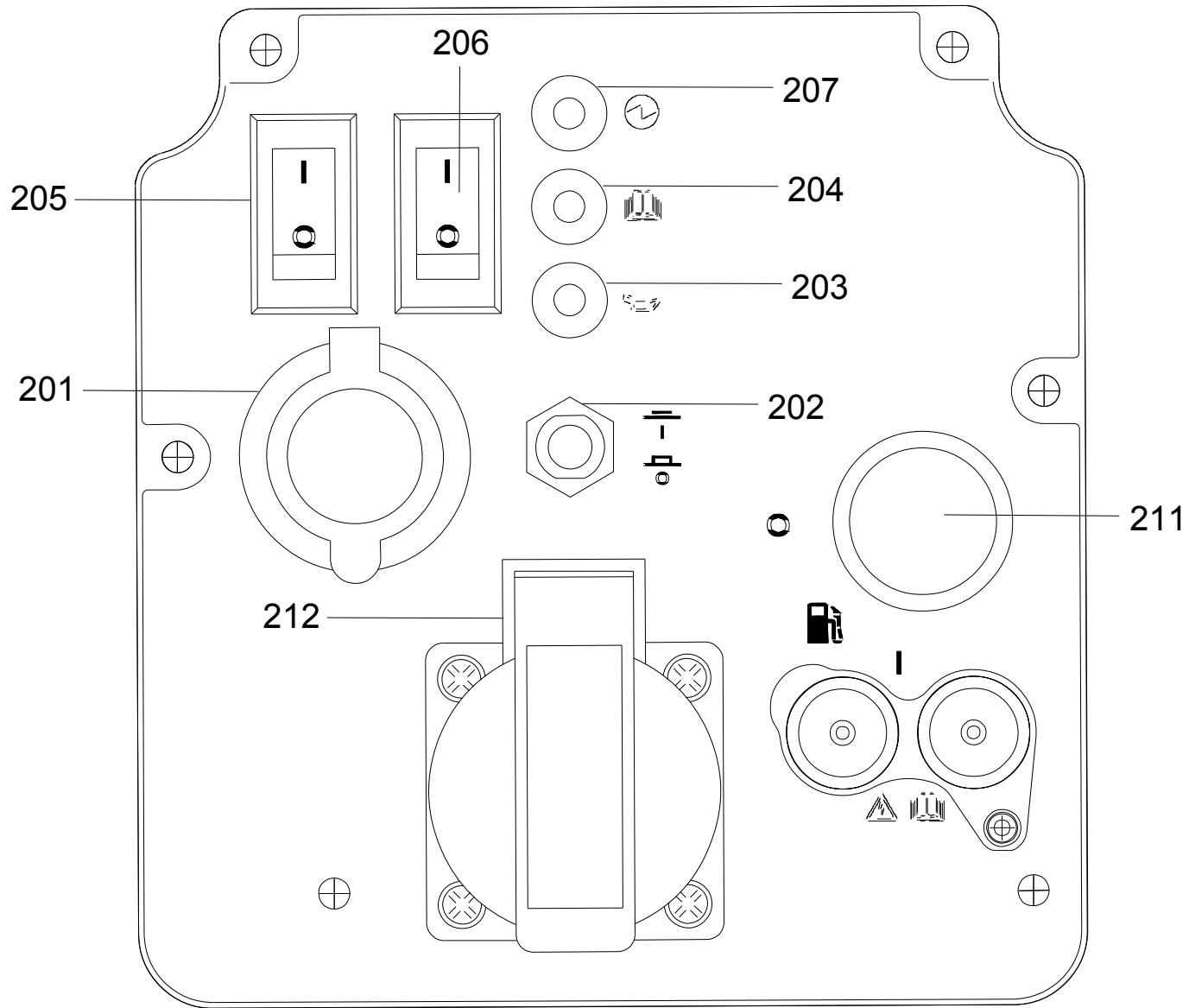
Valid for machine code: PF162S8I000

Revision: 0 (7/2015)

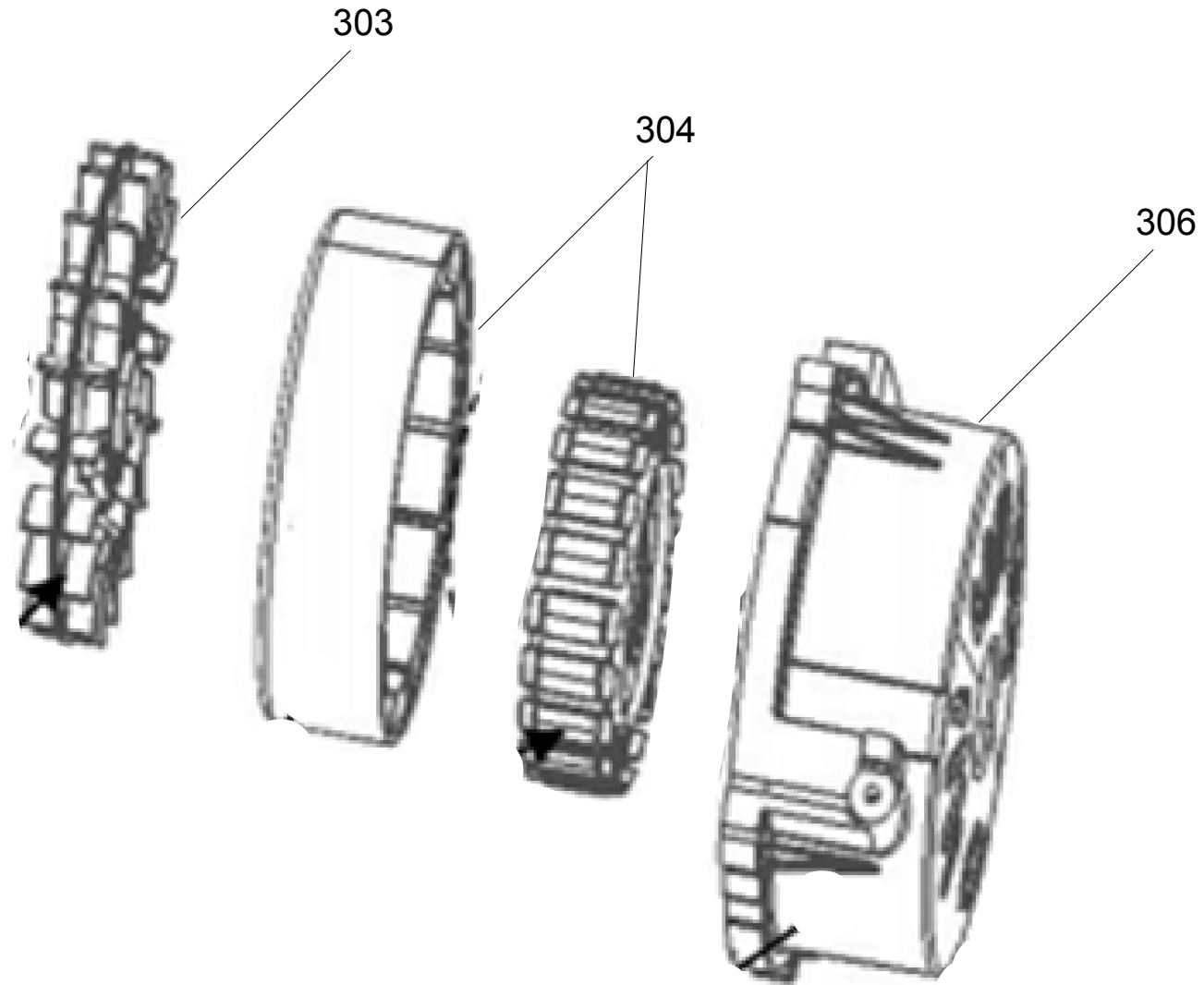
Copyright 2016 Pramac Group, All Rights Reserved.



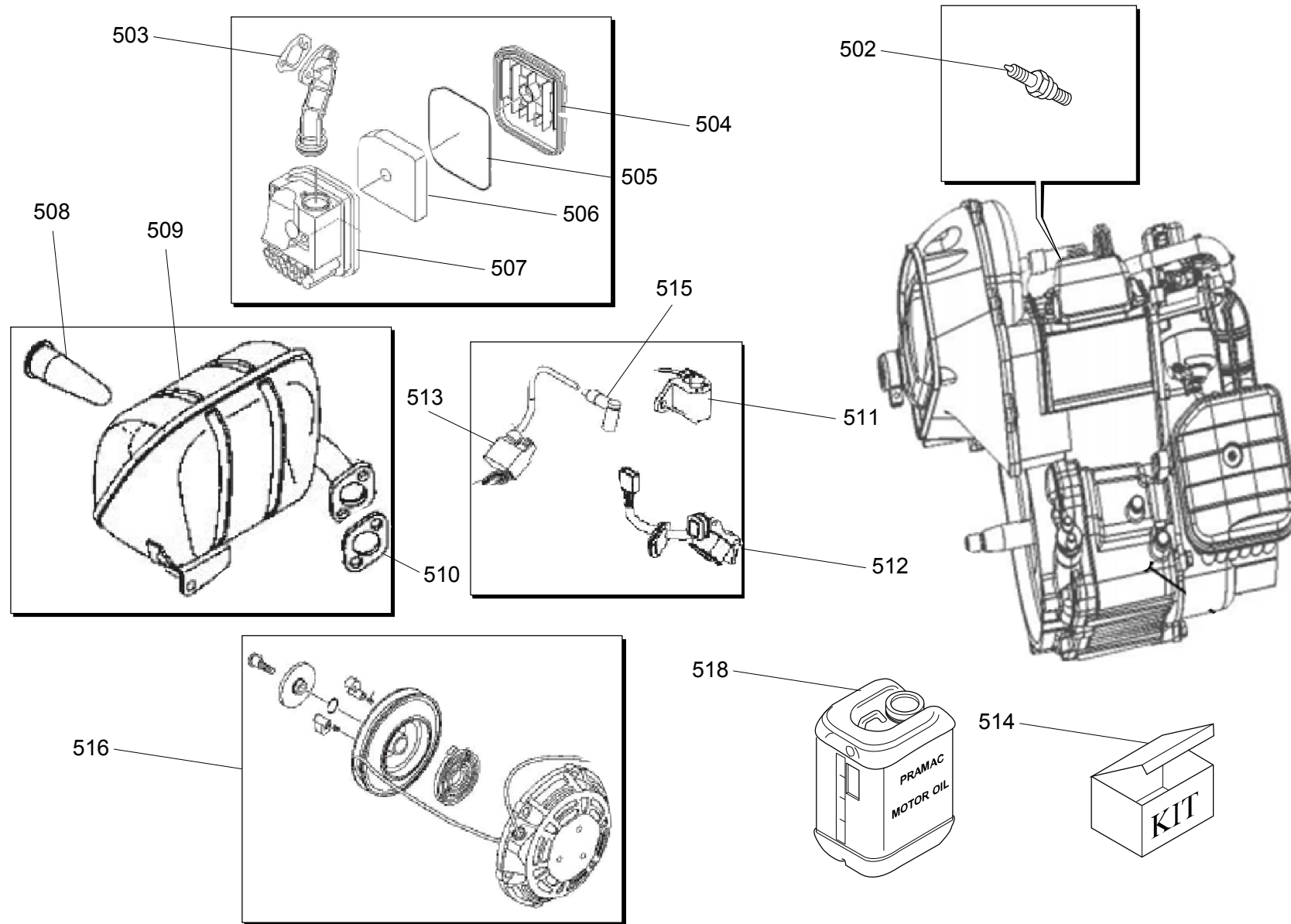
Position	Part Number	Description	Notes
101	PGT00127	Fuel Cap	-
102	PGT00119	Fuel Tank Assy	-
103	PGT00120	Inverter Air Inlet Cover Assy	-
104	PGT00118	Rear Cover Assy	-
105	PGT00125	Fuel Valve Handle	-
106	PGT00126	Fuel Valve	-
107	PGT00122	Bottom Cover Assy	-
108	PGT00121	Front Cover Assy	-
109	PGT00124	Muffler Exhaust Cover Assy	-
110	PGT00117	Inverter Assy	-



Position	Part Number	Description	Notes
201	PGT00136	Output 12v Dc	-
203	PGT00131	Oil Warning Red Lamp	-
204	PGT00132	Overload Red Lamp	-
205	PGT00134	Engine Switch	-
206	PGT00135	Economic Switch Throttle	-
207	PGT00133	Run-power Green Lamp	-
211	PGT00137	Open/close Fuel Switch	-
212	G071131	Socket Subassembly, Power Supply	-

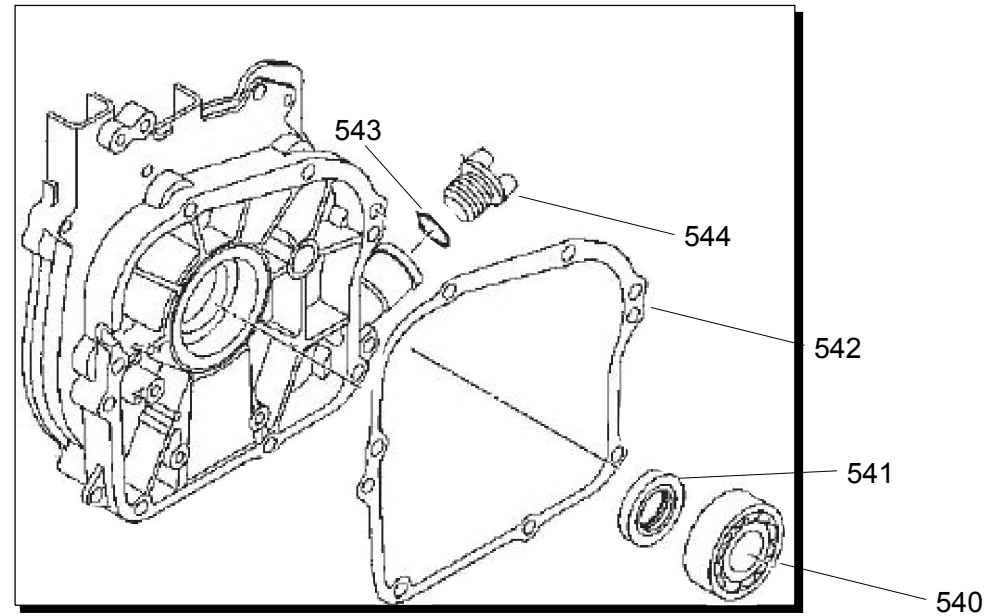
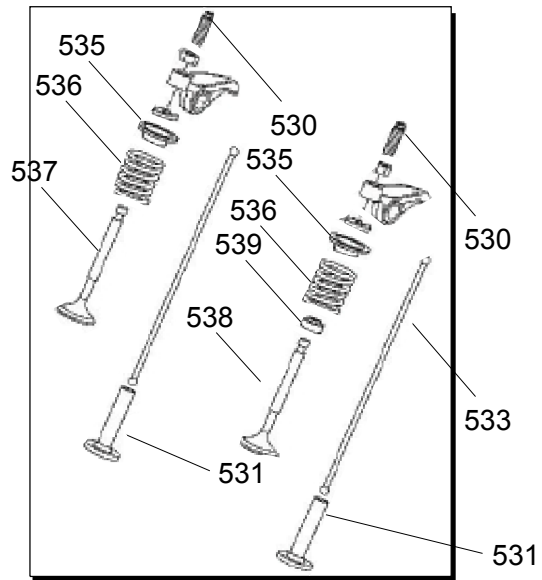
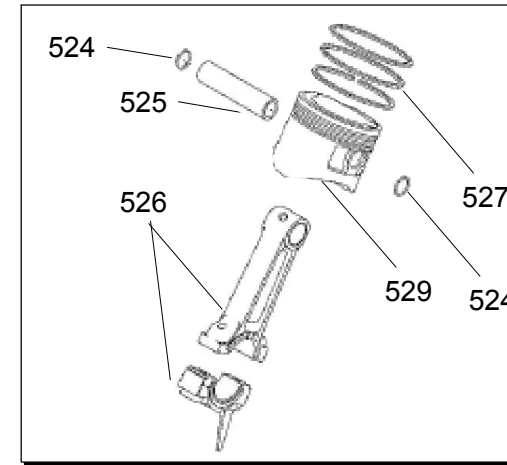
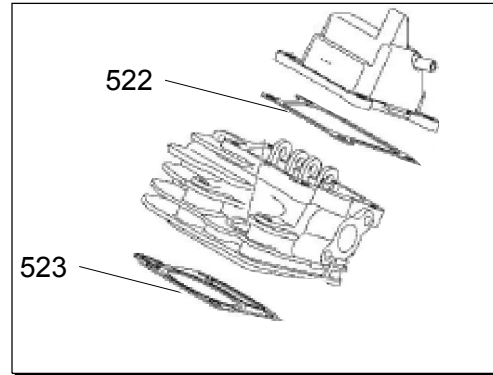
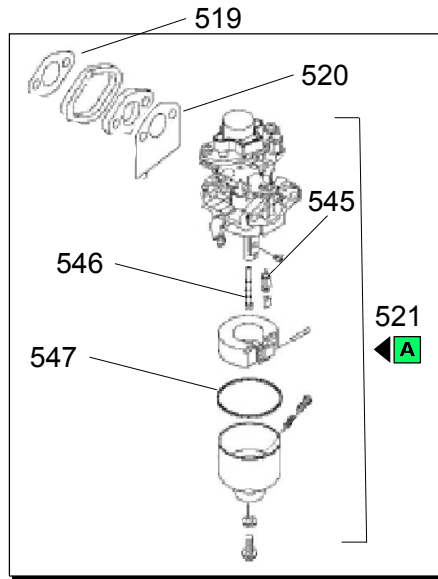


Position	Part Number	Description	Notes
303	PGT00128	Cooling Fan	-
304	PGT00129	Alternator Assy	-
306	PGT00130	Alternator Cover	-





Position	Part Number	Description	Notes
502	PEH98076-56717	Spark Bpr6hs	-
503	PEE00017	Gasket, Air Cleaner	-
504	PEE00014	Cap Cleaner Case	-
505	PEE00016	Seal	-
506	PEE00015	Element Air Cleaner	-
507	PEE00011	Case Air Cleaner Front	-
508	PEE00020	Spark Arrest	-
509	PEE00019	Muffler	-
510	PEE00021	Gasket Exhaust Pipe	-
511	PEE00030	Oil Level Gauge Assy	-
512	PEE00027	Coil Assy	-
513	PEE00028	Ignition Coil Assy	-
514	P3KI00319	Kit Manutenzione P2000i-yamaha	-
515	PEE00029	Plug Cap Assy	-
516	PEE00010	Starter Assy	-
518	P3KI00299	Kit Pramac Power	-



Position	Part Number	Description	Notes
519	PEE00012	Gasket, Manifold	-
520	PEE00013	Gasket, Manifold	-
521	PEE00018	Carburator Assy	-
522	PEE00004	Cylinder Gasket	-
523	PEE00003	Gasket Cylinder Head	-
524	PEE00009	Circlip	-
525	PEE00008	Pin, Piston	-
526	PEE00005	Connecting Rod Assy	-
527	PEE00007	Piston Ring Set (std	-
529	PEE00006	Piston (std)	-
530	PEE00036	Screw Valve Adjusting	-
531	PEE00033	Lifter Valve	-
533	PEE00037	Rod Valve Push	-
535	PEE00035	Retainer Valve Spring	-
536	PEE00034	Spring Compressor	-
537	PEE00032	Valve Exhaust	-
538	PEE00031	Valve Intake	-
539	PEE00038	Seal Valve Stem	-
540	PEE00022	Bearing	-
541	PEE00023	Oil Seal	-
542	PEE00026	Gasket, Crankcase Cover	-
543	PEE00025	O-ring	-
544	PEE00024	Plug Oil	-
545	PEE00040	Needle Assy	-
546	PEE00039	Carburator Nozzle Main	-
547	PEE00041	Gasket Floam Chamber	-