

Spare Parts Catalogue

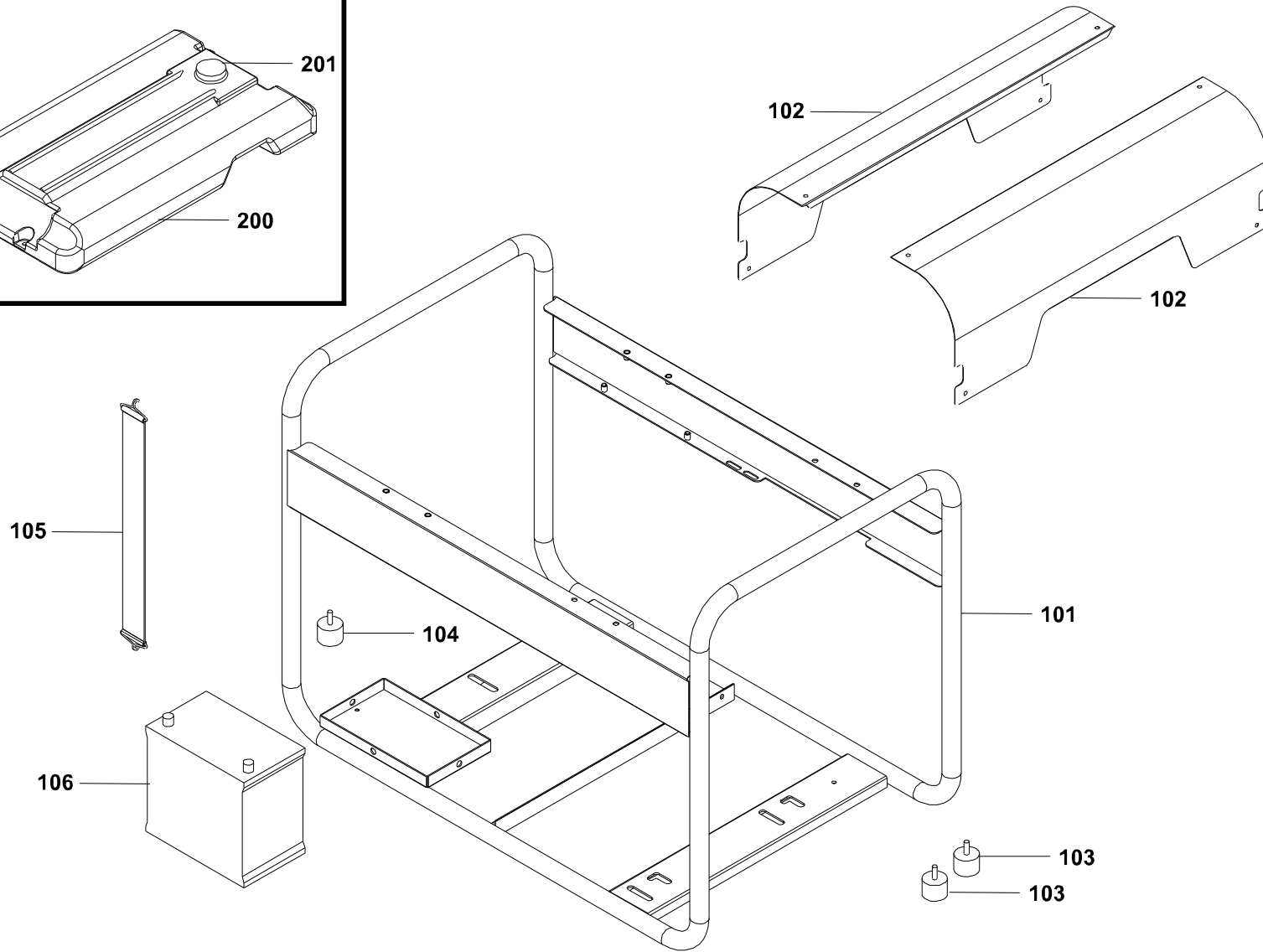
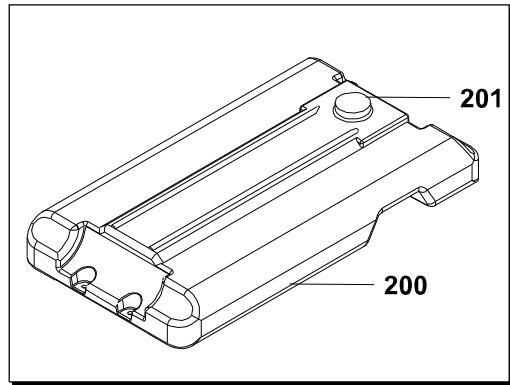
S8000+DPP-MONOPHASE-E.STARTER





Power systems | Generating sets

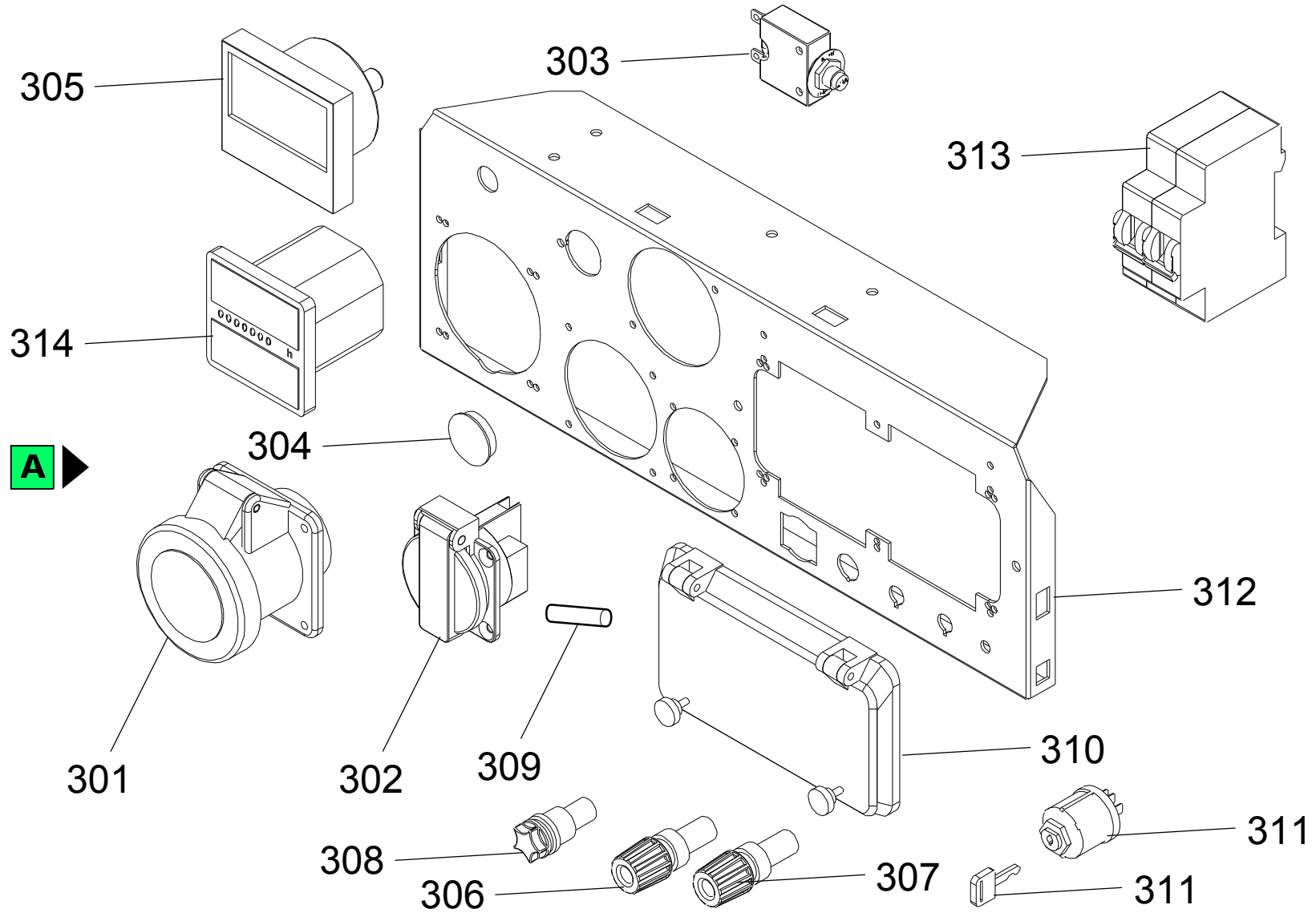
Valid for machine code: PD612SHB001

Revision: 0 (11/2007)

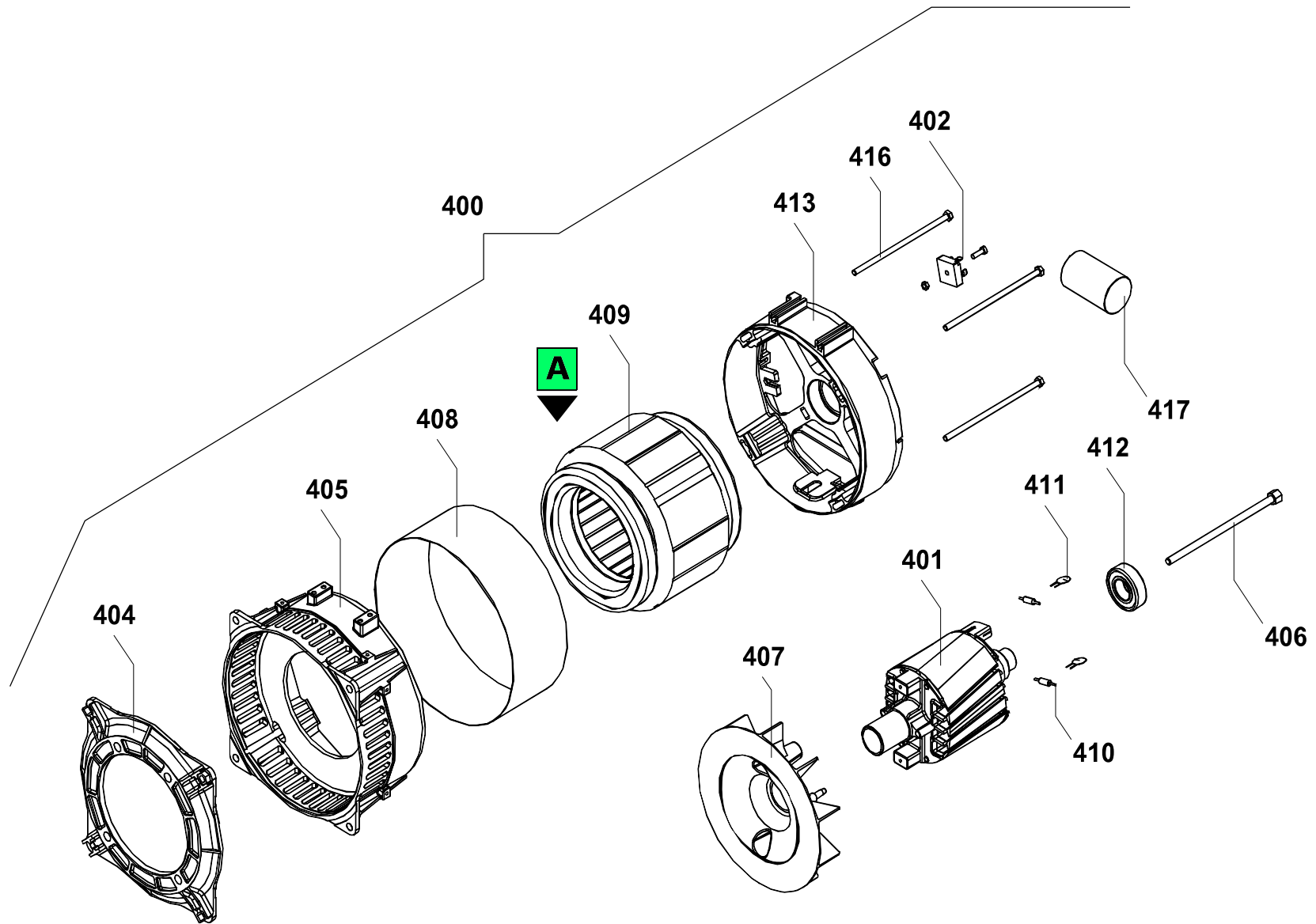
Copyright 2016 Pramac Group, All Rights Reserved.



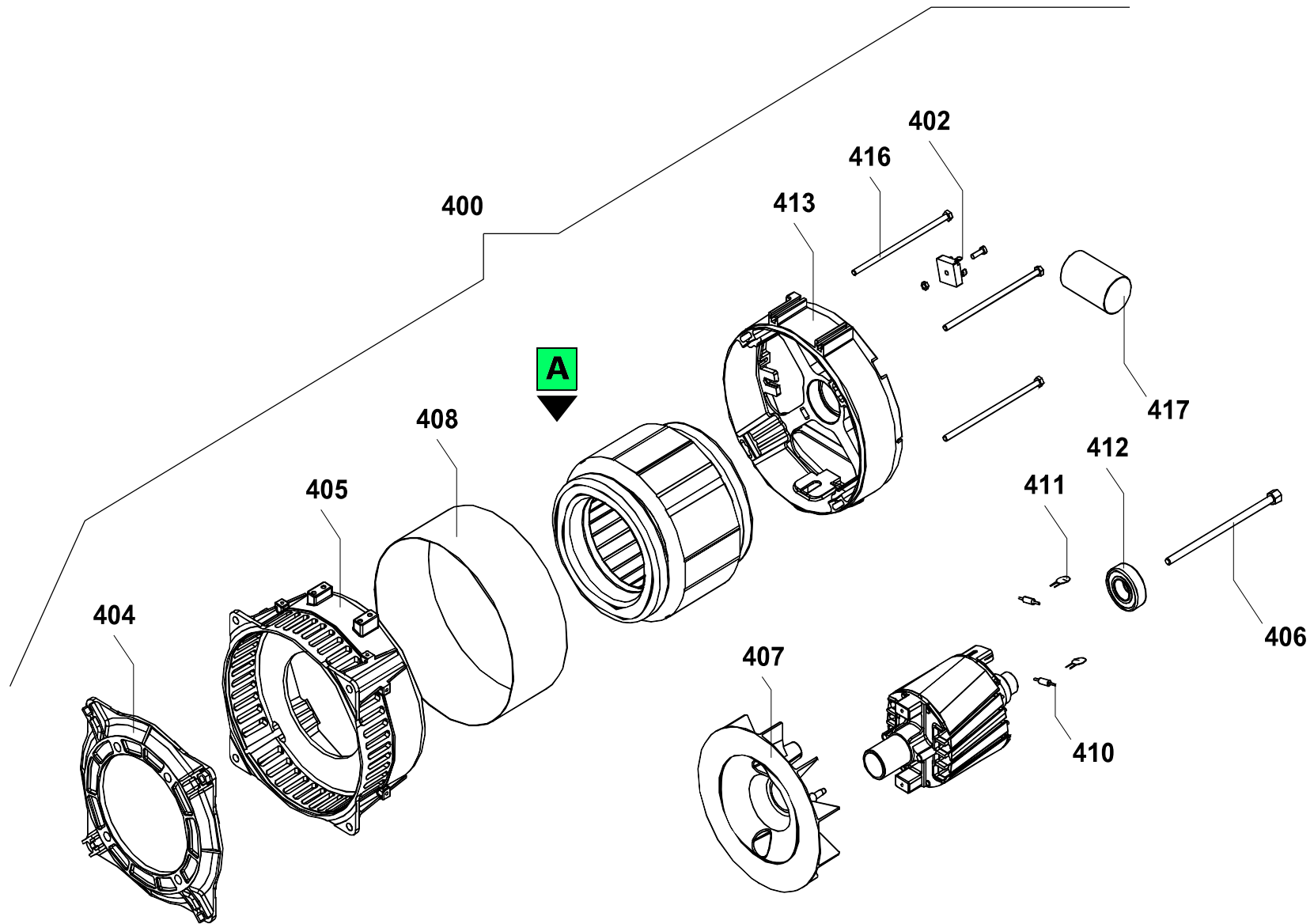
Position	Part Number	Description	Notes
101	VA40016010-9005	Frame S5-8000 Painted	-
102	VA9347-PRAMACB	Lateral Hinge Series S5/8000 Painted	-
103	G052112	Cylindric Silent-block Mf-30x30-m8x15-m8-60	-
104	 G052120	Cylindric Silent-block Mf-40x40-m8x14-m8-45	Valid for products manufactured from 11/11/2004
	 G052116	Cylindric Silent-block Mf-40x45-m10x25-m10-45	Valid for products manufactured from 03/05/2004 to 11/11/2004
105	G040702	Elastic Tension Rod L=400	-
106	G089001	Battery 26ah 12v Sealed - 205x132x185.5	-
200	G51397	Fuel Tank Petrol S 5000/8000 *h*pi (18l)	-
201	 G080201	Obsolete Use G080215	
	 G080215	Fuel Cap Without Key - Vent Holes On Top	



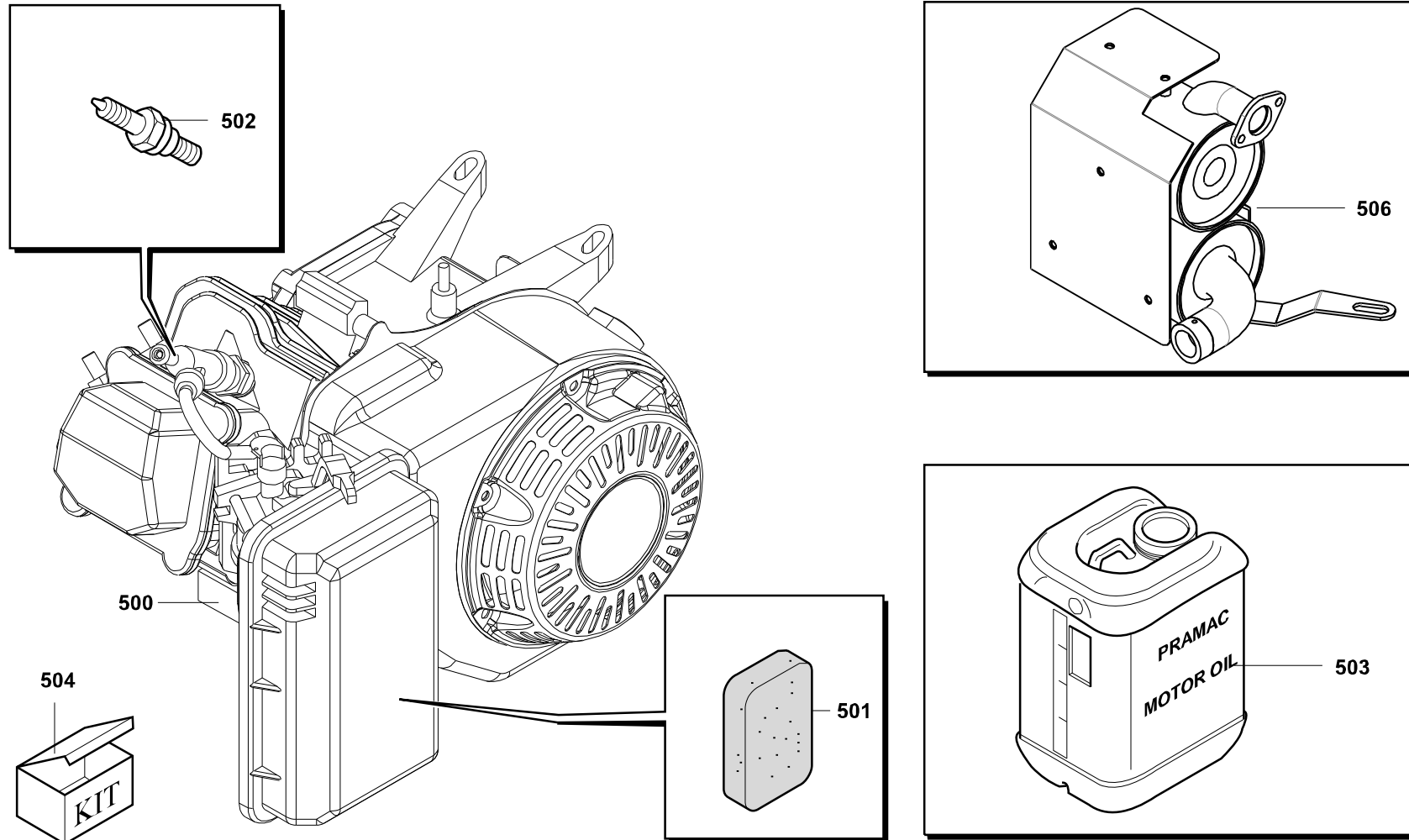
Position	Part Number	Description	Notes
300	SA40016912	Quadro Elettrico S8000 Mf +dpp Ae	-
301	G071136	Socket 2p+t 230v 32a Ip44 Cee	-
302	G071131	Socket Subassembly, Power Supply	-
303	G075533	Switch Us 15 A 250v	-
304	G070305	Waterproof Cap - Pitch M12	-
305	G079833	Voltmeter 0-300v D.56	-
306	G070109	Battery Charger Red Screw Terminal	-
307	G070110	Battery Charger Black Screw Terminal	-
308	G070617	Panel Mount Fuse Holder 6a (5x20)	-
309	G070616	Fuse 10a 5x20 Glass	-
310	G070315	Ip55 Cover 2 Modules Din	-
311	G075234	Complete Starter Key Selector Delta System	-
312	GA9350	Lamiera Quadro Monofase Speciale S5-8000	-
313	G075758	Interr. Magnetotermico 2p 25a 230v 0.03a 4.5ka Diff.	-
314	G079033	Panel Mount Hour Meter (230v)	-



Position	Part Number	Description	Notes
400	AMS6500CB000XZ	Alt. 110.ar2 6,5/115/230/50/3000/12 J609b	-
401	PAM0391602703	Rotor 6,5kva Ar2/110 J609b	-
402	PAM0391400607	Rectifying Diode Bridge Mf (skb25-08)	-
404	PAM0390600175	Flange Alt. Ar2 J609b - S20w	-
405	PAM0391700333	Cover Ar2	-
406	PAM0391800343	Central Tension Rod Ar2 6,5kva J609b 190 Mm	-
407	PAM0392000039	Fan Ar2/110	-
408	PAM0390601050	Shutter Band Ar2 6,5 Kva	-
409	PAM0391702001	Stator Ar2/110 6.5/115/230/50/3000	-
410	PAM9910356050	Diode D2/125 25a	-
411	G70459	Varistor Z-10-l-561	-
412	G70704	Rear Bearing 6205-2z	-
413	PAM0390302222	Alt. Front Cover Ar2/110	-
416	PAM0391800295	Side Tension Rod Ar2 6,5 Kva	-
417	G079102	Capacitor 35uf 450v	-



Position	Part Number	Description	Notes
400	AMS6000CB000XY	Alternator S20w-95/a 6/115/230/50/3000/12 J609b	-
402	PAM0391400607	Rectifying Diode Bridge Mf (skb25-08)	-
404	PAM0390600175	Flange Alt. Ar2 J609b - S20w	-
405	PAM0391700333	Cover Ar2	-
406	PAM00012	Securing Stud S20w 7.2 186mm	-
407	PAM0392000041	Fan S20w	-
408	PAM0390601053	Enclosing Band S20w 6kva	-
410	PAM9910356050	Diode D2/125 25a	-
411	G70459	Varistor Z-10-l-561	-
412	G70704	Rear Bearing 6205-2z	-
413	PAM0390302222	Alt. Front Cover Ar2/110	-
416	PAM0391800322	Cover Stay Bolt S20w 6kva	-
417	G079102	Capacitor 35uf 450v	-



Position	Part Number	Description	Notes
500	▲ EHA130CB21Y	Engine Honda Gx390k1 Vpe5 Air_3000_mech_j609b-_12vdc__ver/sp:	Valid for products manufactured until 13/01/2006
	▲ EHA130CB21X	Engine Honda Gx390u1 Vpe9 Air_3000_mech_j609b-_12vdc__ver/sp:	Valid for products manufactured from 13/01/2006
501	PEH17211-899-000	Air Filter Element	-
502	PEH98079-56876	Spark Plug	-
503	P3KI00299	Kit Pramac Power	-
504	P3KI00331	Es8000-s8000-sp8000 Maintenance Kit	-
506	▲ SA40016931	Muffler Engine Gx390	Valid for products manufactured from 07/04/2009
	▲ VA40016008-9005O	Muffler Painted Gx390	Valid for products manufactured until 07/04/2009