

LIGHT

GENERAL CATALOGUE

TL - LIGHTING TOWERS

GREEN LINE



VT-Hybrid

- Height: 8.5 m
- 4x150W LED
- 665 hours
- MPnano digital controller
- Site or road trailer
- 1-cyl. engine
- 2500 m²

P. 4



Hydro Power Box Hybrid

- Height: 8.3 m
- 4x150W LED
- 498 hours
- MPnano digital controller
- Vandalism-proof for events
- Top accessibility
- 1-cyl. engine
- 2500 m²

P. 5



CUBE PRO

- Height: 8.4 m
- 4x120W HYPER LED
- Battery: 10 hours
- Generator: 220 hours
- Hybrid system: 408 hours
- MPnano digital controller
- 2-cyl. engine
- Up to 2500 m²

P. 6



CUBE NEXT

- Height: 8.4 m
- 4x150W or 4x300W LED
- Up to 112 hours
- Top accessibility
- Dimmable light power
- Full battery technology
- Up to 4200 m²

P. 7



SOLAR LINE



VTS

- Height: 6.5 m
- 4x65W or 4x100W LED
- Manual lifting system
- 3x300W solar panels
- Site or road trailer
- Battery pack
- 1500 m² (4x65W)
- 2100 m² (4x100W)

P. 8



MOBILE LINE



VT-Mine

- Height: 8.5 m
- 6x320W LED
- Hydraulic lifting system
- GTL01 digital controller
- Special for mining sector
- Site or road trailer
- 3-cyl. engine
- 5200 m²

P. 12



Linktower T4 LED / UFO

- Height: 6.7 m
- 4x185W or 1x400W LED
- Manual lifting system
- Hand trolley
- Extremely compact
- Linkable in series
- 400W UFO version available
- 2500 m² (LED)
- 1000 m² (UFO LED)

P. 16



STATIONARY LINE



Hydro Power Box 360

- Height: 8.4 m
- 4x320W HYPER LED
- Hydraulic lifting system
- GTL01 digital controller
- Vandalism-proof for events
- 2-cyl. engine
- 4200 m² (LED @ 360°)
- 4500 m² (LED @ 180°)

P. 19



CTF 10

- Height: 10 m
- 4x185W or 4x320 LED
- Manual lifting system
- Extremely compact
- Without engine
- 3600 m² (4x185W LED)
- 5000 m² (4x320W LED)

P. 23



V20 HYPER

- Height: 8.5 m
- 4x320W HYPER LED
- Hydraulic lifting system
- GTL01 digital controller
- Site or road trailer
- 2-cyl. engine
- Up to 4500 m²



P. 9

V20

- Height: 8.5 m
- 4x320W LED
- Hydraulic lifting system
- GTL01 digital controller
- Site or road trailer
- 2-cyl. engine
- 4500 m²



P. 10

iQ20

- Height: 8.5 m
- 4x320W LED
- Hydraulic lifting system
- GTL01 digital controller
- Site or road trailer
- 1-cyl. engine
- 4500 m²

P. 11

VTevo

- Height: 8 m
- 4x320W LED
- Manual lifting system
- Compact shape
- Site or road trailer
- 1 or 2-cyl. engine
- 4500 m²



P. 13

VMAX

- Height: 8 m
- 6x320W LED
- Manual lifting system
- Reinforced frame
- Liquid containment tank
- Site or road trailer
- 3-cyl. engine
- 5200 m²

P. 14



VT8

- Height: 8 m
- 4x1000W MH
- Manual lifting system
- Site or road trailer
- 3-cyl. engine
- 4200 m²

P. 15



MT1 LED / UFO

- Height: 5.3 m
- 4x185W or 1x400W LED
- Manual lifting system
- Hand trolley or road trailer
- Extremely compact
- 400W UFO version available
- 1-cyl. engine
- 2100 m² (LED)
850 m² (UFO LED)

P. 17

MT2

- Height: 5.2 m
- 4x185W LED
- Manual lifting system
- Hand trolley
- Extremely compact
- 1-cyl. engine
- 2100 m²

P. 18

CUBE⁺ HYPER

- Height: 8.4 m
- 4x320W HYPER LED
- Hydraulic lifting system
- GTL01 digital controller
- Top accessibility
- 2-cyl. engine
- Up to 4500 m²



P. 20

CUBE⁺ SUPER

- Height: 8.4 m
- 4x320W LED
- Hydraulic lifting system
- GTL01 digital controller
- Top accessibility
- 2-cyl. engine
- 4500 m²

P. 21



VTevoQ

- Height: 7.5 m
- 4x320W LED
- Manual lifting system
- GTL01 digital controller
- Compact shape
- 2-cyl. engine
- 4500 m²

P. 22

CTF 5

- Height: 5 m
- 4x185W LED
- Manual lifting system
- Fastening on base
- 1500 m²



P. 24

CTF 5.5 / 7 / 9

- Height: 5.5 / 7 / 9 m
- 4x65W LED
- Manual lifting system
- Fastening on side
- 1200 m² (CTF 5.5)
- 1500 m² (CTF 7)
- 1800 m² (CTF 9)

P. 24



TF 5 / 7

- Height: 5 / 7 m
- 4x65W LED
- Manual lifting system
- On tripod
- 1200 m² (TF 5)
- 1500 m² (TF 7)

P. 24

VT-HYBRID

The VT-Hybrid is the first hybrid lighting tower in the world. It is equipped with 4x150W high efficiency LED floodlights powered by a rechargeable battery pack. This light tower guarantees a great reliability and a perfect sustainability. Mobile version with site-tow or road trailer.



BATTERY PACK

The VT-Hybrid is equipped with a special battery pack able to power the LED floodlights in total absence of noise and carbon emissions. Once the battery is low, the backup generator automatically starts and powers the floodlights while recharging the battery. This model can be powered also by and external power source.



MPNANO DIGITAL CONTROLLER

A digital controller to manage every function of the hybrid lighting tower.

VT-Hybrid

TECHNICAL DATA		
Min. dimensions (mm)	Length x Width x Height	3250 x 1400 x 2440
Max. dimensions (mm)	Length x Width x Height	3250 x 2100 x 8500
Dry weight (kg)		1230
Engine models available*		Yanmar L70N
Avg. sound pressure	dB(A) @ 7m	0 - 67
Battery recharging time (h)		6.25
Battery running time (h)		8
Total running time (h)		665
Lifting system	M:Manual / H:Hydraulic	H
Mast rotation (°)		340
Wind speed resistance (km/h)		110
Lamps power (W)		4 x 150
Lamps type	MH:MetalHalide / LD:LED	LD
Total lumen (Lm)		76500
Illuminated area (m ²)		2500
Alternator	kVA/V/Hz	5/220/50 - 5/240/60
Inlet plug	A/V/Hz	16/220/50 - 16/240/60
Tank capacity (liters)		160
Liquid containment tank (110%)	√:Yes / •:No	√

* For engine specifications, see page 32

HYDRO POWER BOX HYBRID

The Hydro Power Box is now available in the innovative hybrid configuration! Thanks to its high safety features, the Hydro Power Box Hybrid is an ideal lighting tower for illuminating live events like concerts and sport matches, even placed near the public.



BATTERY PACK

The HPB Hybrid is equipped with a special battery pack able to power the LED floodlights in total absence of noise and carbon emissions. Once the battery is low, the backup generator automatically starts and powers the floodlights while recharging the battery. This model can be powered also by and external power source.



MPNANO DIGITAL CONTROLLER

A digital controller to manage every function of the hybrid lighting tower.

HPB Hybrid

TECHNICAL DATA		
Min. dimensions (mm)	Length x Width x Height	1150 x 1150 x 2500
Max. dimensions (mm)	Length x Width x Height	1150 x 1150 x 8300
Dry weight (kg)		1194
Engine models available*		Yanmar L70N
Avg. sound pressure	dB(A) @ 7m	0 - 66
Battery recharging time (h)		6.25
Battery running time (h)		8
Total running time (h)		498
Lifting system	M:Manual / H:Hydraulic	H
Mast rotation (°)		340
Wind speed resistance (km/h)		80
Lamps power (W)		4 x 150
Lamps type	MH:MetalHalide / LD:LED	LD
Total lumen (Lm)		76500
Illuminated area (m ²)		2500
Alternator	kVA/V/Hz	5/220/50 - 5/240/60
Inlet plug	A/V/Hz	16/220/50 - 16/240/60
Tank capacity (liters)		247
Liquid containment tank (110%)	√:Yes / ●:No	√

* For engine specifications, see page 32

CUBE PRO

CUBE PRO is not just a new lighting tower, but the real and only "ALL IN ONE" product! It embodies all the innovations and new technologies that Generac Mobile® has developed in over 20 years at the top of the industry as manufacturer. We have brought together all the Rental needs, in one single product.



Version with anti-glare shells



HYPER LED LAMPS

LED floodlights placed on special brackets to point them in every direction.

ALL IN ONE

CUBE PRO is the only lighting tower to offer altogether:

- 1) the **future**, with 100% battery-powered supply;
- 2) the **present**, with the latest generation hybrid power supply;
- 3) the **tradition**, with low consumption diesel engines.

All in one model.

CUBE PRO

TECHNICAL DATA		
Min. dimensions (mm)	Length x Width x Height	1230 x 1150 x 2383
Max. dimensions (mm)	Length x Width x Height	1793 x 1737 x 8400
Dry weight (kg)		1175
Engine models available*		Kubota Z482 - Stage V
Avg. sound pressure	dB(A) @ 7m	0 - 58
Battery recharging time (h)		7
Running time - Battery mode (h)		10
Running time - Generator mode (h)		220
Running time - Hybrid mode (h)		408
Lifting system	M:Manual / H:Hydraulic	H
Mast rotation (°)		340
Wind speed resistance (km/h)		110
Lamps power (W)		4 x 120
Lamps type	MH:MetalHalide / LD:LED	LD (Hyper)
Total lumen (Lm)		67200
Illuminated area (m ²)	180° / 360°	2500 / 2400
Alternator	kVA/V/Hz	5/220/50 - 5/240/60
Inlet plug	A/V/Hz	16/220/50 - 16/240/60
Tank capacity (liters)		170
Liquid containment tank (110%)	√:Yes / ●:No	√

* For engine specifications, see page 32

CUBE⁺ NEXT

The CUBE⁺ NEXT is a new battery powered lighting tower that has been designed to attain the highest levels of performance and safety with total respect for the environment. Providing the longest range in battery powered lighting towers we have set the standard in our industry.



BATTERY PACK

The CUBE⁺ NEXT is equipped with a plug in/out battery pack able to power the LED floodlights in total absence of noise and carbon emissions. Once the battery is low, it can be recharged by and external power source.

DIMMABLE POWER

The CUBE⁺ Next is equipped with a dimmer switch able to control the lamp output and manage energy consumption, application and performance.

		CUBE ⁺ NEXT 4x150W	CUBE ⁺ NEXT 4x300W
TECHNICAL DATA			
Min. dimensions (mm)	Length x Width x Height	1220 x 1150 x 2420	1220 x 1150 x 2420
Max. dimensions (mm)	Length x Width x Height	1790 x 1740 x 8400	1790 x 1740 x 8400
Dry weight (kg)		1270	1280
Avg. sound pressure	dB(A) @ 7m	0	0
Battery recharging time (h)		12	12
Battery running time (h)	@100% dimming	36	17
Lifting system	M:Manual / H:Hydraulic	H	H
Mast rotation (°)		340	340
Wind speed resistance (km/h)		80	80
Max. lamps power (W)		4 x 150	4 x 300
Lamps type	MH: MetalHalide / LD: LED	LD	LD
Max. total lumen (Lm)	@100% dimming	76500	153000
Max. illuminated area (m ²)	@100% dimming	2500	4200
Inlet plug	A/V/Hz	32/220/50 - 32/240/60	32/220/50 - 32/340/60

The ultimate in ecology, in compact dimensions and easily transportable. The new VTS lighting tower, powered by three solar panels, guarantees great brightness performance and battery life. An easy control panel and the possibility of connecting to an external power source for recharging even in the absence of sunshine, make this lighting tower a product of simple use and great ductility.



SOLAR POWER SYSTEM

The VTS combines a MPPT solar charge controller and an inverter/charger in one products. The batteries can be charged with three 300W solar panels and/or with AC power.



MCP - MANUAL CONTROL PANEL

The MCP of the VTS includes battery monitoring device, electric system alarms and protections, hour counter, lamps button, on/off switch.

Options: digital timer, darkness sensor, display monitor.

		VTS-A	VTS-B
TECHNICAL DATA			
Min. dimensions (mm)	Length x Width x Height	2890 x 1410 x 2470	2890 x 1410 x 2470
Max. dimensions (mm)	Length x Width x Height	3250 x 1410 x 6500	3250 x 1410 x 6500
Dry weight (kg)		tbd	tbd
Avg. sound pressure	dB(A) @ 7m	0	0
Solar panels power (W)		3 x 300	3 x 300
Solar panels inclination angle (°)		From 0 to 45	From 0 to 45
AGM batteries (Ah)		8 x 230	8 x 230
Battery recharging time (h)	Solar peak or grid	6	6
Battery running time (h)		16	8
Lifting system	M:Manual / H:Hydraulic	M	M
Mast rotation (°)		340	340
Wind speed resistance (km/h)		80	80
Lamps power (W)		4 x 65	4 x 100
Lamps type	MH: MetalHalide / LD: LED	LD	LD
Total lumen (Lm)		29000	58800
Illuminated area (m ²)		1500	2100
Inlet plug	A/V/Hz	16/220/50 - 16/240/60	16/220/50 - 16/240/60

All data and pictures in this page must be considered for illustrative purposes only and are not legally binding. The manufacturer reserves the right to bring modifications without advance notice.

V20 HYPER

The V20 Hyper is a new mobile lighting tower equipped with 4x320W Hyper LED floodlights. Thanks to the special brackets, it's possible to point every floodlight in the direction you need. These special lamps are also available with anti-glare options.



HYPER LED LAMPS

LED floodlights placed on special brackets to point them in every direction.



GTL01 DIGITAL CONTROLLER

A digital controller specifically designed to manage every function of the lighting tower for ultimate control.

V20 Hyper

TECHNICAL DATA			
Min. dimensions (mm)	Length x Width x Height	2200 x 1400 x 2440	
Max. dimensions (mm)	Length x Width x Height	2200 x 1850 x 8500	
Dry weight (kg)		980	
Engine models available*		Kubota Z482	Yanmar 2TNV70
Avg. sound pressure	dB(A) @ 7m	58	59
Total running time (h)		143	143
Lifting system	M:Manual / H:Hydraulic	H	
Mast rotation (°)		340	
Wind speed resistance (km/h)		110	
Lamps power (W)		4 x 320	
Lamps type	MH: MetalHalide / LD: LED	LD (Hyper)	
Total lumen (Lm)		184000	
Illuminated area (m ²)	180° / 360°	4500 / 4200	
Alternator	kVA/V/Hz	5/220/50 - 5/240/60	
Outlet socket	kVA/V/Hz	2/220/50 - 2/240/60	
Inlet plug	A/V/Hz	16/220/50 - 16/240/60	
Tank capacity (liters)		100	
Liquid containment tank (110%)	√:Yes / ●:No	√	

* For engine specifications, see page 32

V20

The V20 is a brand-new mobile lighting tower equipped with 4x320W high efficiency LED floodlights. Extended running time and one of the lowest sound pressure level in the industry, an ideal model for rental companies.



GENERAC® LED LAMPS

High efficiency LED floodlights designed by Generac Mobile®.



GTL01 DIGITAL CONTROLLER

A digital controller specifically designed to manage every function of the lighting tower for ultimate control.

V20

TECHNICAL DATA			
Min. dimensions (mm)	Length x Width x Height	2200 x 1400 x 2440	
Max. dimensions (mm)	Length x Width x Height	2200 x 1850 x 8500	
Dry weight (kg)		980	
Engine models available*		Kubota Z482	Yanmar 2TNV70
Avg. sound pressure	dB(A) @ 7m	58	59
Total running time (h)		143	143
Lifting system	M:Manual / H:Hydraulic	H	
Mast rotation (°)		340	
Wind speed resistance (km/h)		110	
Lamps power (W)		4 x 320	
Lamps type	MH: MetalHalide / LD: LED	LD	
Total lumen (Lm)		167300	
Illuminated area (m ²)		4500	
Alternator	kVA/V/Hz	5/220/50 - 5/240/60	
Outlet socket	kVA/V/Hz	2/220/50 - 2/240/60	
Inlet plug	A/V/Hz	16/220/50 - 16/240/60	
Tank capacity (liters)		100	
Liquid containment tank (110%)	√: Yes / •: No	√	

* For engine specifications, see page 32

iQ20

A mobile lighting tower equipped with a low consumption diesel engine, 4x320W LED floodlights and a digital controller designed by Generac Mobile® for specific use on lighting towers. When equipped with the telemetry system, the iQ20 is the perfect solution for rental companies looking for a simple remote management system of their rental fleet.



GENERAC® LED LAMPS

High efficiency LED floodlights designed by Generac Mobile®.



GTL01 DIGITAL CONTROLLER

A digital controller specifically designed to manage every function of the lighting tower for ultimate control.

iQ20

TECHNICAL DATA		
Min. dimensions (mm)	Length x Width x Height	2200 x 1400 x 2440
Max. dimensions (mm)	Length x Width x Height	2200 x 1850 x 8500
Dry weight (kg)		980
Engine models available*		Yanmar L70N
Avg. sound pressure	dB(A) @ 7m	68
Total running time (h)		91
Lifting system	M:Manual / H:Hydraulic	H
Mast rotation (°)		340
Wind speed resistance (km/h)		110
Lamps power (W)		4 x 320
Lamps type	MH:MetalHalide / LD:LED	LD
Total lumen (Lm)		184000
Illuminated area (m ²)		4500
Alternator	kVA/V/Hz	5/220/50 - 5/240/60
Tank capacity (liters)		100
Liquid containment tank (110%)	√:Yes / ●:No	√

* For engine specifications, see page 32

VT-MINE

A mobile lighting tower specifically developed for mining applications. Thanks to its 6x320W LED floodlights, the VT-Mine provides a very high illuminating capacity joined with all the LED lamp benefits. Those include robustness and low maintenance due to the absence of glass and light bulbs. A large fuel tank meets a low fuel consumption engine providing a very long running time.



GENERAC® LED LAMPS

High efficiency LED floodlights designed by Generac Mobile®.



GTL02 DIGITAL CONTROLLER

A digital controller specifically designed to manage every function of the lighting towers with six floodlights.

VT-Mine

TECHNICAL DATA		
Min. dimensions (mm)	Length x Width x Height	3550 x 1690 x 2330
Max. dimensions (mm)	Length x Width x Height	3710 x 1850 x 8500
Dry weight (kg)		1320
Engine models available*		Kubota D1105
Avg. sound pressure	dB(A) @ 7m	65
Total running time (h)		120
Lifting system	M:Manual / H:Hydraulic	H
Mast rotation (°)		340
Wind speed resistance (km/h)		110
Lamps power (W)		6 x 320
Lamps type	MH: MetalHalide / LD: LED	LD
Total lumen (Lm)		276000
Illuminated area (m ²)		5200
Alternator	kVA/V/Hz	8/220/50 - 8/240/60
Outlet socket	kVA/V/Hz	2/220/50 - 2/240/60
Tank capacity (liters)		112
Liquid containment tank (110%)	√:Yes / ●:No	√

* For engine specifications, see page 32

The lighting power of 4x320W LED floodlights meets a very narrow canopy design, evolving the new VTevo into the most compact and eco-friendly lighting tower ever created! VTevo will help you to skip up to 75% of fuel and protect our environment with a reduction in carbon emissions up to 10 Ton per year.



GENERAC® LED LAMPS

High efficiency LED floodlights designed by Generac Mobile®.



MCP - MANUAL CONTROL PANEL

The MCP includes fuel level gauge, engine alarms, starting key, on/off switches for lamps and magneto-thermal cutout switch with differential relay. The GTL01 digital controller is available upon request.

VTevo

TECHNICAL DATA				
Min. dimensions (mm)	Length x Width x Height	2480 x 1190 x 2450		
Max. dimensions (mm)	Length x Width x Height	2480 x 2400 x 8000		
Dry weight (kg)		658		
Engine models available*		Yanmar L70N	Yanmar 2TNV70	Kubota Z482
Avg. sound pressure	dB(A) @ 7m	63	61	60
Total running time (h)		200	171	171
Lifting system	M:Manual / H:Hydraulic	M		
Mast rotation (°)		340		
Wind speed resistance (km/h)		80		
Lamps power (W)		4 x 320		
Lamps type	MH:MetalHalide / LD:LED	LD		
Total lumen (Lm)		184000		
Illuminated area (m ²)		4500		
Alternator	kVA/V/Hz	5/220/50 - 5/240/60		
Outlet socket	kVA/V/Hz	2/220/50 - 2/240/60		
Tank capacity (liters)		120		
Liquid containment tank (110%)	√:Yes / ●:No	√		

* For engine specifications, see page 32

The VMAX mobile lighting tower offers to our customers an high illuminating capacity joined with new great and unique features: 6x320 high-efficiency LED floodlights, liquid containment tank and reinforced frame, making this model ideal for the mining sector.



GENERAC® LED LAMPS

High efficiency LED floodlights designed by Generac Mobile®.



MCP - MANUAL CONTROL PANEL

The MCP includes fuel level gauge, engine alarms, starting key, on/off switches for lamps and magneto-thermal cutout switch with differential relay. The GTL02 digital controller is available upon request.

VMAX

TECHNICAL DATA

Min. dimensions (mm)	Length x Width x Height	2430 x 1130 x 2450
Max. dimensions (mm)	Length x Width x Height	2430 x 2190 x 8000
Dry weight (kg)		760
Engine models available*		Kubota D1105
Avg. sound pressure	dB(A) @ 7m	63
Total running time (h)		104
Lifting system	M:Manual / H:Hydraulic	M
Mast rotation (°)		340
Wind speed resistance (km/h)		110
Lamps power (W)		6 x 320
Lamps type	MH: MetalHalide / LD: LED	LD
Total lumen (Lm)		276000
Illuminated area (m ²)		5200
Alternator	kVA/V/Hz	8/220/50 - 8/240/60
Outlet socket	kVA/V/Hz	3/220/50 - 3/24/60
Tank capacity (liters)		110
Liquid containment tank (110%)	√: Yes / ●: No	√

* For engine specifications, see page 32

Compact footprint and ease of use are two main features that make the VT8 lighting tower one of the top models in the Generac Mobile® range. High performance balanced with cost-effectiveness allowed the VT8 to become the best seller traditional model in the International market.



METAL HALIDE LAMPS

The traditional 4x1000W powerful metal halide lamps are able to provide a perfect illumination by night or with bad weather conditions, even in big working areas.



MCP - MANUAL CONTROL PANEL

The MCP includes fuel level gauge, engine alarms, starting key, on/off switches for lamps and magneto-thermal cutout switch with differential relay.

VT8

TECHNICAL DATA		
Min. dimensions (mm)	Length x Width x Height	2650 x 1300 x 2460
Max. dimensions (mm)	Length x Width x Height	2650 x 2460 x 8000
Dry weight (kg)		716
Engine models available*		Kubota D1105
Avg. sound pressure	dB(A) @ 7m	68
Total running time (h)		44
Lifting system	M:Manual / H:Hydraulic	M
Mast rotation (°)		340
Wind speed resistance (km/h)		110
Lamps power (W)		4 x 1000
Lamps type	MH:MetalHalide / LD:LED	MH
Total lumen (Lm)		360000
Illuminated area (m ²)		4200
Alternator	kVA/V/Hz	8/220/50 - 8/240/60
Outlet socket	kVA/V/Hz	3/220/50 - 3/240/60
Tank capacity (liters)		75

* For engine specifications, see page 32

LINKTOWER T4

The Linktower is one of the most innovative and revolutionary models in the Generac Mobile® range. This mobile lighting tower can be powered by an external power source like a power generating set, the Main or another lighting tower with built-in generator. Moreover, it is possible to connect in series more units to a single power source, to get a high illuminating area with very low fuel consumption.



LED version



UFO version

		Linktower T4 LED	Linktower T4 UFO
TECHNICAL DATA			
Min. dimensions (mm)	Length x Width x Height	1230 x 780 x 2110	1230 x 780 x 2420
Max. dimensions (mm)	Length x Width x Height	1870 x 1460 x 6700	1870 x 1460 x 6300
Dry weight (kg)		248	220
Lifting system	M:Manual / H:Hydraulic	M	M
Mast rotation (°)		340	340
Wind speed resistance (km/h)		80	80
Lamps power (W)		4 x 185	1 x 400
Lamps type	MH:MetalHalide / LD:LED	LD	LD (UFO)
Total lumen (Lm)		93000	50000
Illuminated area (m ²)	180° / 360°	2500 / n.a.	n.a. / 1000
Outlet socket	A/V/Hz	16/220/50 - 16/240/60	16/220/50 - 16/240/60
Inlet plug	A/V/Hz	16/220/50 - 16/240/60	16/220/50 - 16/240/60
Max. units in series		4	7

MT1

The smallest mobile lighting tower of the range equipped with built-in generator, the MT1 is the ideal solution for illuminating small to medium sized working areas. Also available in «UFO» LED configuration.



LED version



UFO version

TECHNICAL DATA		MT1 LED	MT1 RT-UFO
Min. dimensions (mm)	Length x Width x Height	1100 x 1180 x 1900	2482 x 1318 x 2500
Max. dimensions (mm)	Length x Width x Height	1630 x 2080 x 5300	2482 x 2280 x 5500
Dry weight (kg)		339	459
Engine models available*		Yanmar L70N	Yanmar L70N
Avg. sound pressure	dB(A) @ 7m	67	67
Total running time (h)		15	15
Lifting system	M:Manual / H:Hydraulic	M	M
Wind speed resistance (km/h)		80	80
Lamps power (W)		4 x 185	1 x 400
Lamps type	MH: MetalHalide / LD: LED	LD	LD (UFO)
Total lumen (Lm)		93000	50000
Illuminated area (m ²)	180° / 360°	2100 / n.a.	n.a. / 850
Alternator	kVA/V/Hz	5/220/50 - 5/240/60	5/220/50 - 5/240/60
Outlet socket	kVA/V/Hz	2/220/50 - 2/240/60	2/220/50 - 2/240/60
Tank capacity (liters)		17	17
Liquid containment tank (110%)	√: Yes / ●: No	√	√
Standard trailer		Hand trolley	Road trailer

* For engine specifications, see page 32

MT2

One of the smallest mobile lighting towers of the Generac Mobile® range, the MT2 is equipped with 4x185W high-efficiency LED floodlights and a built-in generating set available in two different versions. This model is equipped with a hand trolley for easy transportation.



GENERAC® LED LAMPS

High efficiency LED floodlights designed by Generac Mobile®.

EASY HANDLING

The front steering handle combined with four wheels and a light weight ensure a large turning radius and easy transportation by only one operator.

		MT2 Y	MT2 H
TECHNICAL DATA			
Min. dimensions (mm)	Length x Width x Height	1270 x 980 x 1870	1270 x 980 x 1870
Max. dimensions (mm)	Length x Width x Height	1470 x 1420 x 5200	1470 x 1420 x 5200
Dry weight (kg)		320	320
Engine models available*		Yanmar L70N	Honda GX270
Avg. sound pressure	dB(A) @ 7m	68	69
Total running time (h)		16	25
Lifting system	M:Manual / H:Hydraulic	M	M
Wind speed resistance (km/h)		80	80
Lamps power (W)		4 x 185	4 x 185
Lamps type	MH: MetalHalide / LD: LED	LD	LD
Total lumen (Lm)		93000	93000
Illuminated area (m ²)		2100	2100
Alternator	kVA/V/Hz	4/220/50*	5.3/220/50*
CEE outlet socket	A/V/Hz	32/220/50*	32/220/50*
Schuko outlet socket	A/V/Hz	16/220/50*	16/220/50*
Tank capacity (liters)		18	27

* For engine specifications, see page 32

* 60 Hz version available on request.

HYDRO POWER BOX 360

A very special lighting tower, specifically developed for applications with high risk of tampering or damaging, provides a concrete vandalism-proof solution. The redesigned Hydro Power Box is devoid of protruding profiles to avoid any risk of injury even when used during crowded events. The lighting system and the control panel are entirely enclosed within the machine by a casing with locks; access to staff is restricted to authorized persons only. An ideal solution for live events, concerts, rallies or public events.



HYPER LED LAMPS

LED floodlights placed on special brackets to point them in every direction.



GTL01 DIGITAL CONTROLLER

A digital controller specifically designed to manage every function of the lighting tower for ultimate control.

HPB 360

TECHNICAL DATA			
Min. dimensions (mm)	Length x Width x Height	1150 x 1150 x 2500	
Max. dimensions (mm)	Length x Width x Height	1150 x 1150 x 8400	
Dry weight (kg)		1200	
Engine models available*		Kubota Z482	Yanmar 2TNV70
Avg. sound pressure	dB(A) @ 7m	64	65
Total running time (h)		353	353
Lifting system	M:Manual / H:Hydraulic	H	
Mast rotation (°)		340	
Wind speed resistance (km/h)		80	
Lamps power (W)		4 x 320	
Lamps type	MH: MetalHalide / LD: LED	LD (Hyper)	
Total lumen (Lm)		184000	
Illuminated area (m ²)	180° / 360°	4500 / 4200	
Alternator	kVA/V/Hz	5/220/50 - 5/240/60	
Outlet socket	kVA/V/Hz	2.5/220/50 - 2.5/240/60	
Inlet plug	A/V/Hz	16/220/50 - 16/240/60	
Tank capacity (liters)		247	
Liquid containment tank (110%)	√:Yes / ●:No	√	

* For engine specifications, see page 32

CUBE⁺ HYPER

The CUBE⁺ Hyper is a special version of the best-seller CUBE⁺ Super model, where the traditional LED floodlights have been replaced with the new HYPER LED head allowing the operator to arrange every floodlight in the preferred position to provide up to 360° illumination. Also available with anti-glare kit.



HYPER LED LAMPS

LED floodlights placed on special brackets to point them in every direction.



GTL01 DIGITAL CONTROLLER

A digital controller specifically designed to manage every function of the lighting tower for ultimate control.

CUBE⁺ HYPER

TECHNICAL DATA			
Min. dimensions (mm)	Length x Width x Height	1220 x 1150 x 2420	
Max. dimensions (mm)	Length x Width x Height	1790 x 1740 x 8400	
Dry weight (kg)		1070	
Engine models available*		Kubota Z482	Yanmar 2TNV70
Avg. sound pressure	dB(A) @ 7m	58	59
Total running time (h)		243	243
Lifting system	M:Manual / H:Hydraulic	H	
Mast rotation (°)		340	
Wind speed resistance (km/h)		80	
Lamps power (W)		4 x 320	
Lamps type	MH: MetalHalide / LD: LED	LD (Hyper)	
Total lumen (Lm)		184000	
Illuminated area (m ²)	180° / 360°	4500 / 4200	
Alternator	kVA/V/Hz	5/220/50 - 5/240/60	
Outlet socket	kVA/V/Hz	2.5/220/50 - 2.5/240/60	
Inlet plug	A/V/Hz	16/220/50 - 16/240/60	
Tank capacity (liters)		170	
Liquid containment tank (110%)	√: Yes / ●: No	√	

* For engine specifications, see page 32

CUBE⁺ SUPER

The CUBE⁺ Super by Generac Mobile[®] is a lighting tower installed on zinc-coated base with a special bolded frame increasing resistance to vibrations, wear and rust. Features like compact shape, high-efficiency LED floodlights and safe locking stabilizers make this model ideal for rental companies.



GENERAC[®] LED LAMPS

High efficiency LED floodlights designed by Generac Mobile[®].



GTL01 DIGITAL CONTROLLER

A digital controller specifically designed to manage every function of the lighting tower for ultimate control.

CUBE⁺ SUPER

TECHNICAL DATA			
Min. dimensions (mm)	Length x Width x Height	1220 x 1150 x 2420	
Max. dimensions (mm)	Length x Width x Height	1790 x 1740 x 8400	
Dry weight (kg)		1070	
Engine models available*		Kubota Z482	Yanmar 2TNV70
Avg. sound pressure	dB(A) @ 7m	58	59
Total running time (h)		243	243
Lifting system	M:Manual / H:Hydraulic	H	
Mast rotation (°)		340	
Wind speed resistance (km/h)		80	
Lamps power (W)		4 x 320	
Lamps type	MH: MetalHalide / LD: LED	LD	
Total lumen (Lm)		167300	
Illuminated area (m ²)		4500	
Alternator	kVA/V/Hz	5/220/50 - 5/240/60	
Outlet socket	kVA/V/Hz	2.5/220/50 - 2.5/240/60	
Inlet plug	A/V/Hz	16/220/50 - 16/240/60	
Tank capacity (liters)		170	
Liquid containment tank (110%)	√:Yes / ●:No	√	

* For engine specifications, see page 32

A very compact lighting tower installed on zinc-coated base and equipped with digital controller, high-efficiency LED lamps and safety features like bumpers and manual locking winch. This model is ideal for use during outdoor events.



GENERAC® LED LAMPS

High efficiency LED floodlights designed by Generac Mobile®.



GTL01 DIGITAL CONTROLLER

A digital controller specifically designed to manage every function of the lighting tower for ultimate control.

VTevoQ

TECHNICAL DATA			
Min. dimensions (mm)	Length x Width x Height	2480 x 1310 x 2450	
Max. dimensions (mm)	Length x Width x Height	2480 x 2400 x 7500	
Dry weight (kg)		658	
Engine models available*		Kubota Z482	Yanmar 2TNV70
Avg. sound pressure	dB(A) @ 7m	63	63
Total running time (h)		171	171
Lifting system	M:Manual / H:Hydraulic	M	
Mast rotation (°)		340	
Wind speed resistance (km/h)		80	
Lamps power (W)		4 x 320	
Lamps type	MH: MetalHalide / LD: LED	LD	
Total lumen (Lm)		184000	
Illuminated area (m ²)	180° / 360°	4500	
Alternator	kVA/V/Hz	5/220/50 - 5/240/60	
Outlet socket	kVA/V/Hz	2/220/50 - 2/240/60	
Inlet plug	A/V/Hz	16/220/50 - 16/240/60	
Tank capacity (liters)		120	
Liquid containment tank (110%)	√: Yes / •: No	√	

* For engine specifications, see page 32

CTF 10

The perfect product for a long-term illumination of medium to large sized working areas. The CTF 10 is a very compact model: up to 22 units can be loaded on a single truck. New version with internal control panel for protection against bad weather conditions.



GENERAC® LED LAMPS

High efficiency LED floodlights designed by Generac Mobile®.

LINKABLE MODEL

With the optional «Link» kit, the operator can connect different CTF 10 units to a single power source, providing an high illumination area with reduced fuel consumption.

THE HIGHEST MODEL

Thanks to its 10 meters height mast, the CTF 10 is the highest model of the range, ensuring a very high illuminating coverage.

		CTF 10 LED	CTF 10 SUPER
TECHNICAL DATA			
Min. dimensions (mm)	Length x Width x Height	1150 x 1150 x 2552	1150 x 1150 x 2552
Max. dimensions (mm)	Length x Width x Height	1903 x 1903 x 10000	1903 x 1903 x 10000
Dry weight (kg)		385	396
Lifting system	M:Manual / H:Hydraulic	M	M
Mast rotation (°)		340	340
Wind speed resistance (km/h)		80	80
Lamps power (W)		4 x 185	4 x 320
Lamps type	MH:MetalHalide / LD:LED	LD	LD
Total lumen (Lm)		93000	184000
Illuminated area (m ²)		3600	5000
Outlet socket (option)	A/V/Hz	16/220/50 - 16/240/60	16/220/50 - 16/240/60
Inlet plug	A/V/Hz	16/220/50 - 16/240/60	16/220/50 - 16/240/60

CTF & TF

CTF and TF lighting towers are the most basic models of the Generac Mobile® range. These static lighting towers are extremely practical and easy to be used, ensuring a good level of illumination for small to medium sized areas. The CTF variants of 5.5, 7 and 9 meters are ideal for applications in containers, mobile offices, temporary dormitories and power factories. The 5 meters CTF is suitable for application on road trailer. All these models are also perfect for civil protection use.



CTF 5 LED

TECHNICAL DATA		
Min. dimensions (mm)	Length x Width x Height	1230 x 480 x 2040
Max. dimensions (mm)	Length x Width x Height	1230 x 480 x 5000
Dry weight (kg)		145
Lifting system	M:Manual / H:Hydraulic	M
Mast rotation (°)		360
Wind speed resistance (km/h)		80
Lamps power (W)		4 x 185
Lamps type	MH:MetalHalide / LD:LED	LD
Total lumen (Lm)		93000
Illuminated area (m ²)		2100
Inlet plug	A/V/Hz	16/220/50 - 16/240/60



CTF 5,5

CTF 7

CTF 9

TECHNICAL DATA		CTF 5,5	CTF 7	CTF 9
Min. dimensions (mm)	Length x Width x Height	260 x 280 x 1900	260 x 280 x 2380	280 x 280 x 2500
Max. dimensions (mm)	Length x Width x Height	350 x 1060 x 5500	350 x 1060 x 7000	350 x 1060 x 9000
Dry weight (kg)		67	85	93
Lifting system	M:Manual / H:Hydraulic	M	M	M
Mast rotation (°)		360	360	360
Wind speed resistance (km/h)		80	80	80
Lamps power (W)		4 x 65	4 x 65	4 x 65
Lamps type	MH:MetalHalide / LD:LED	LD	LD	LD
Total lumen (Lm)		23100	23100	23100
Illuminated area (m ²)		1200	1500	1800
Inlet plug	A/V/Hz	16/220/50 - 16/240/60	16/220/50 - 16/240/60	16/220/50 - 16/240/60



TF 5,5

TF 7

TECHNICAL DATA		TF 5,5	TF 7
Min. dimensions (mm)	Length x Width x Height	350 x 400 x 1900	350 x 400 x 2350
Max. dimensions (mm)	Length x Width x Height	1840 x 1500 x 5500	2020 x 1500 x 7000
Dry weight (kg)		64	75
Lifting system	M:Manual / H:Hydraulic	M	M
Wind speed resistance (km/h)		80	80
Lamps power (W)		4 x 65	4 x 65
Lamps type	MH:MetalHalide / LD:LED	LD	LD
Total lumen (Lm)		23100	23100
Illuminated area (m ²)		1200	1500
Inlet plug	A/V/Hz	16/220/50 - 16/240/60	16/220/50 - 16/240/60

SPECIAL LIGHTING TOWERS

Generac Mobile® does take requests for specially designed models and will evaluate the viability of those requests on a case-by-case basis. Also available are a range of alternative products, such as lighting towers with double telescopic mast, extended height masts up to 20 metres and models placed on vehicles, skids or other special trailers.



MAIN OPTIONS



110 V electric sockets

Every 230V inlet plug and outlet socket installed on the machine is replaced with 110V version.



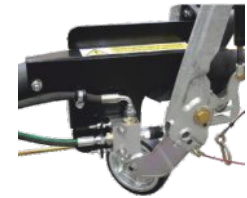
Additional outlet socket

An outlet socket (16A 230V) additional to the one already installed on the frontal panel.



Shut-off valve

An air intake shut-off valve for automatically turning off the diesel engine when overrunning.



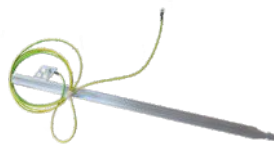
AMOSS kit

The AMOSS kit automatically lowers the lighting tower mast when handbrake is released.



Digital timer

A digital programmable timer to automatically turn on/off the floodlights.



Earth picket

A grounding system including a 5 meters cable and a metal picket to be planted into the ground.



Electric tilting system

A system to let the operator tilt the floodlights from the control panel without lowering the mast.



Hot-dip zinc coating of the mast

A process of dipping the mast steel sections into molten zinc to provide a distinct advantage over corrosion.



Main/generator selector switch

A manual switch to select the power source of the floodlights between the integrated power generator or an external power source.



Hitches

Three different types of hitch to be installed on the trailer (suggested for road trailers): 50mm ball hitch; 50mm eyelet hitch; 60mm eyelet hitch.



Insulation monitoring device

A grounding system that disconnects the power supply when the resistance between the two conductors drops below the set value.



Darkness sensor

A sensor able to detect the environmental light to automatically turn on/off the floodlights.



Pre-heating system

A system to heat the engine before starting. Suggested for cold environments.



Trailers

Our lighting towers can be available with different types of site and road trailers. Please refer to the Trailers page for further details.

Other options available:

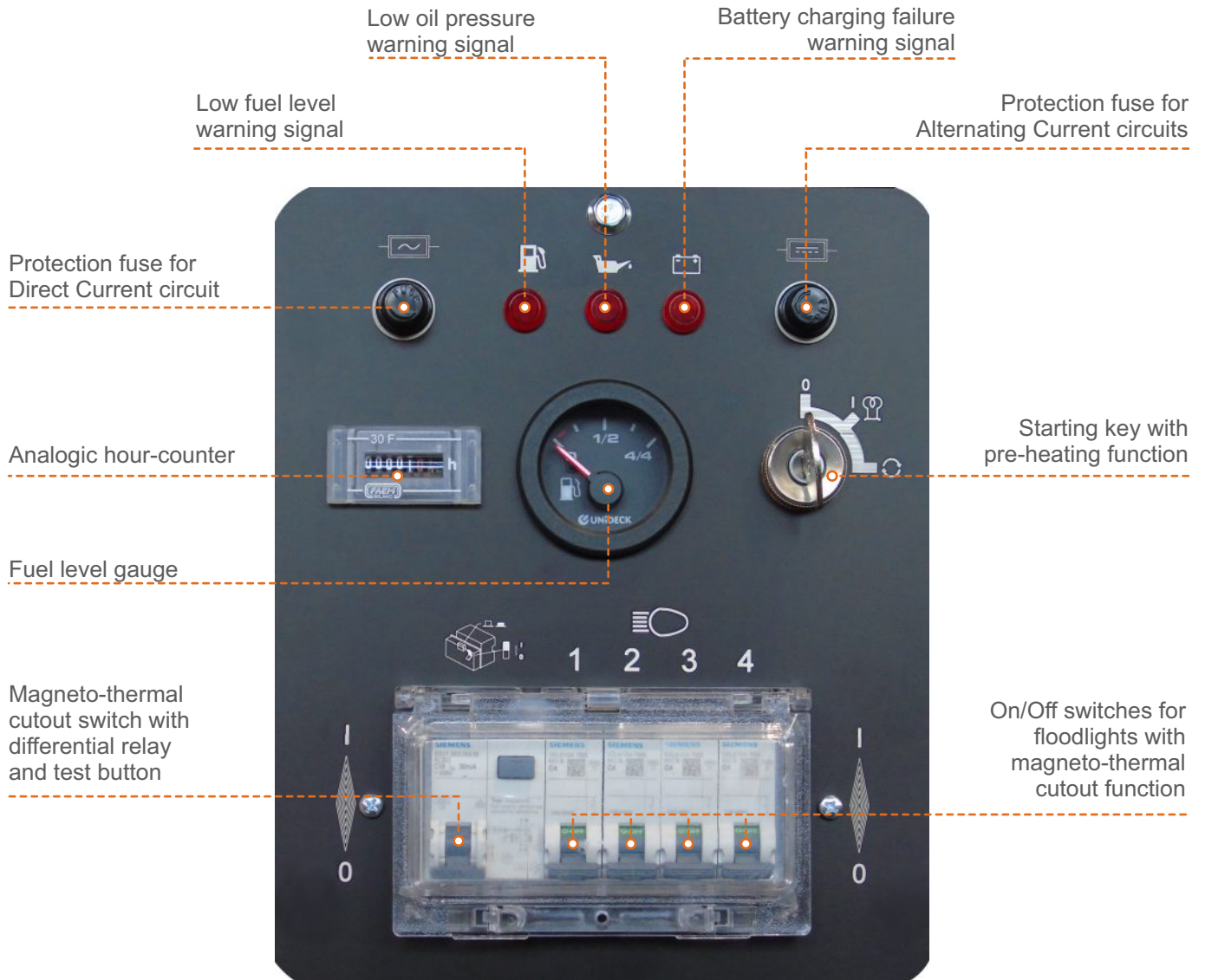
- ⚡ Certified spark arrestor
- ⚡ Electric winch
- ⚡ Additional spare tire with support
- ⚡ Documents for road registration (EU)
- ⚡ Plastic box for documents
- ⚡ Second year of warranty
- ⚡ Low voltage kit
- ⚡ Zinc coated base
- ⚡ Customized colour
- ⚡ Telemetry system (see page 32)
- ⚡ Remote emergency stop controller

Generac Mobile® does take requests for other options not listed in this page and will evaluate the viability of those requests on a case-by-case basis.

MCP - MANUAL CONTROL PANEL

The lighting tower models by Generac Mobile® that are not equipped with a digital controller, are always equipped with the MCP, a Manual Control Panel able to manage all the functions of the machine.

These lighting towers can be equipped with different kind of Manual Control Panels with different features depending on specific model of the unit and the equipped engine.



Discover more about MCP:



GTL01 DIGITAL CONTROLLER

Generac Mobile® engine-driven lighting towers with four floodlights can be equipped with the digital control panel GTL01 that allows the operator to interact with the unit ensuring proper control functionalities and electrical protections in compliance with measures of protection for safety. Featured circuit breakers and toggles work in synergy with the digital controller, that has been directly designed and developed by Generac Mobile®. This is specifically committed to supervise and to manage all the functions of the lighting tower.

DIGITAL CONTROL PANEL MAIN FEATURES:

Protections and toggles:

Protections:

- RCBO: Residual-Current Circuit Breaker with Overcurrent protection
- MCB: Magnetothermic Circuit Breakers
- Fuses

Toggles:

- Generator/Mains switch¹
- Mast control
- Emergency stop button



Operator menu:

- Event list
- Schedule time settings
- Darkness sensor settings
- Language selection
- Date and Clock adjustment
- Display brightness / contrast adjustment
- Light hours counter
- Maintenance reset
- Time to next maintenance

Alarms:

Engine alarms:

- Low oil pressure
- Battery charger fault
- High coolant temperature
- Low fuel level
- Fail to start
- Fail to stop
- Emergency stop¹
- External shutdown¹

Generator alarms:

- Over voltage
- Over frequency
- Under voltage
- Under frequency

GTL01 DIGITAL CONTROLLER

Through the digital controller, the operator can easily and quickly manage all commands and tasks of the lighting tower with four floodlights.

AUTO control mode settings (in case of darkness sensor and/or timer options) are directly accessible via GTL01 operator Menu.

This powerful controller is the all-in-one “smart - mind” of the lighting tower.

Alarm/Event list:

- Generator voltage
- Generator frequency
- Data and real-time clock
- Engine running hours
- Engine status
- Maintenance request
- Control Model enabled
- Active alarm indication
- Fuel level

Discover more about
GLT01:



¹Option available upon request.

GTL02 DIGITAL CONTROLLER

Generac Mobile® engine-driven lighting towers with six floodlights can be equipped with the digital control panel GTL02 that allows the operator to interact with the unit ensuring proper control functionalities and electrical protections in compliance with measures of protection for safety. Featured circuit breakers and toggles work in synergy with the digital controller, that has been directly designed and developed by Generac Mobile®. This is specifically committed to supervise and to manage all the functions of the lighting tower.

DIGITAL CONTROL PANEL MAIN FEATURES:

Protections and toggles:

Protections:

- RCBO: Residual-Current Circuit Breaker with Overcurrent protection
- MCB: Magnetothermic Circuit Breakers
- Fuses

Toggles:

- Generator/Mains switch¹
- Mast control
- Emergency stop button



Operator menu:

- Event list
- Schedule time settings
- Darkness sensor settings
- Language selection
- Date and Clock adjustment
- Display brightness / contrast adjustment
- Light hours counter
- Maintenance reset
- Time to next maintenance

Alarms:

Engine alarms:

- Low oil pressure
- Battery charger fault
- High coolant temperature
- Low fuel level
- Fail to start
- Fail to stop
- Emergency stop¹
- External shutdown¹

Generator alarms:

- Over voltage
- Over frequency
- Under voltage
- Under frequency

GTL02 DIGITAL CONTROLLER

Through the digital controller, the operator can easily and quickly manage all commands and tasks of the lighting tower with six floodlights.

AUTO control mode settings (in case of darkness sensor and/or timer options) are directly accessible via GTL operator Menu.

This powerful controller is the all-in-one "smart - mind" of the lighting tower.

Alarm/Event list:

- Generator voltage
- Generator frequency
- Data and real-time clock
- Engine running hours
- Engine status
- Maintenance request
- Control Model enabled
- Active alarm indication
- Fuel level

Discover more about
GLT02:



¹Option available upon request.

GTL03 DIGITAL CONTROLLER

Generac Mobile® hybrid lighting towers can be equipped with a special digital control panel GTL03, an evolution of the GTL01 digital controller, that allows the operator to interact with the hybrid unit. Featured circuit breakers and toggles work in synergy with the digital controller, that is specifically committed to supervise and to manage all the functions of the hybrid lighting tower.

DIGITAL CONTROL PANEL MAIN FEATURES:

Protections and toggles:

Protections:

- RCBO: Residual-Current Circuit Breaker with Overcurrent protection
- MCB: Magnetothermic Circuit Breakers
- Fuses

Toggles:

- Generator/Mains switch¹
- Mast control
- Emergency stop button



GTL03 DIGITAL CONTROLLER

Through the GTL03 digital controller, the operator can easily and quickly manage all commands and tasks of the hybrid lighting tower.

AUTO control mode settings (in case of darkness sensor and/or timer options) are directly accessible via GTL03 operator Menu.

In case of lighting tower unit with dimmable lights, it is possible to adjust the power of the floodlights via GTL03 operator Menu.

This powerful controller is the all-in-one “smart - mind” of the hybrid lighting tower.

Operator menu:

- Event list
- Schedule time settings
- Darkness sensor settings
- Language selection
- Date and Clock adjustment
- Display brightness / contrast adjustment
- Light hours counter
- Maintenance reset
- Time to next maintenance
- Floodlight power regulation²
- Battery measures
- RGM measures

Alarms:

Engine alarms:

- Low oil pressure
- Battery charger fault
- High coolant temperature
- Low fuel level
- Fail to start
- Fail to stop
- Emergency stop¹
- External shutdown¹

Generator alarms:

- Over voltage
- Over frequency
- Under voltage
- Under frequency

Battery/RGM alarms:

- Error signal with code

Alarm/Event list:

- Generator voltage
- Generator frequency
- Data and real-time clock
- Engine running hours
- Engine status
- Maintenance request
- Control Model enabled
- Active alarm indication
- Fuel level

Discover more about
GLT03:



¹ Option available upon request.

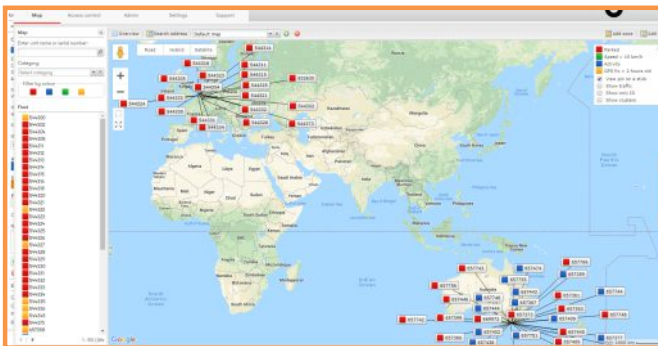
² Available on models equipped with dimmable LED floodlights.

TELEMETRY SYSTEM

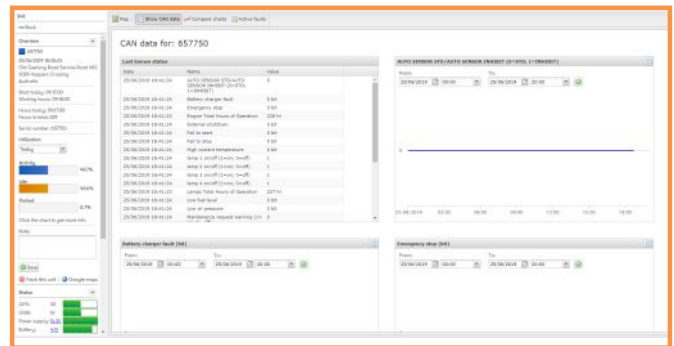
All the Generac Mobile® lighting towers equipped with a GTL digital controller are available with the Telemetry System option.

Thanks to our partnership with TrackUnit® A/S, we can offer our customers the opportunity to remotely manage their entire fleet of lighting towers by checking in real time their position (via GPS) and the status of engine, battery, lamps and so on. Through the Telemetry System it is also possible to set warning alarms to activate when the unit is moved and track it via GPS. Finally, the Telemetry System can automatically advise the fleet manager everytime maintenance is required.

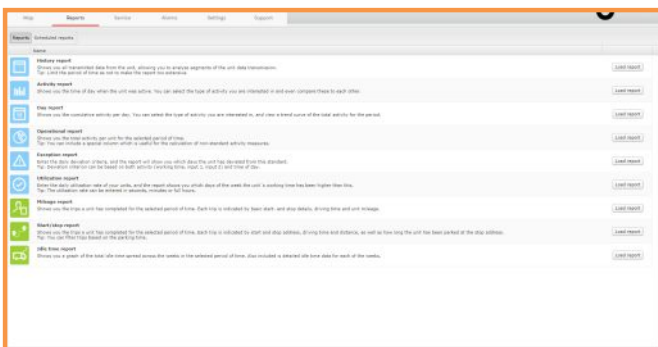
Through an optional feature, the operator can also turn on and off the engine remotely, a very useful function especially when there is a high number of lighting towers or they are placed far from the operators.



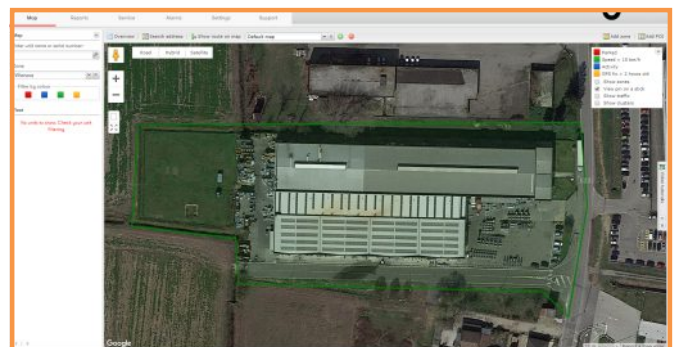
You will just need a device connected to the Internet line to track and manage all your lighting towers all over the world!



Check the on/off status of engine, lamps and alarms, as well as other data including fuel level and utilization percentage. All data will be made available on your device whenever you need it.



Check daily reports on your fleet and receive an email message everytime one of your units requires a programmed maintenance.



Set different kind of warning alarms to prevent thefts and unauthorized usage, and track your units when lost.

Discover more about the Telemetry System:



ENGINES

Generac Mobile® lighting towers can be equipped with one or more models of diesel or petrol engine, from 1 to 3 cylinders, available at 50 or 60 Hz.



TECHNICAL DATA

Engine brand		Yanmar	Yanmar	Yanmar
Engine model		L70N	L100N	2TNV70
Cylinders (q.ty)		1	1	2
Engine frequency (Hz)		50 / 60	50 / n.a.	50 / 60
Engine speed (RPM)	50 / 60 Hz	3000 / 3600	2500 / n.a.	1500 / 1800
Engine cooling	L: Liquid / A: Air	A	A	L
Fuel type	D:Diesel / P:Petrol	D	D	D

TECHNICAL DATA

Engine brand		Kubota	Kubota
Engine model		Z482	D1105
Cylinders (q.ty)		2	3
Engine frequency (Hz)		50 / 60	50 / 60
Engine speed (RPM)	50 / 60 Hz	1500 / 1800	1500 / 1800
Engine cooling	L: Liquid / A: Air	L	L
Fuel type	D:Diesel / P:Petrol	D	D

TECHNICAL DATA

Engine brand		Honda
Engine model		GX270
Cylinders (q.ty)		1
Engine frequency (Hz)		50*
Engine speed (RPM)	50 / 60 Hz	1500
Engine cooling	L: Liquid / A: Air	A
Fuel type	D:Diesel / P:Petrol	P

* 60 Hz engine available on request.

TRAILERS



Road trailer type A

Straight tow-bar with height adjustable jockey wheel, hand brake, inertia brakes, parking brake and back lights. Available with eyelet hitch or ball hitch.



Road trailer type B

Foldable tow-bar with height adjustable jockey wheel, hand brake, inertia brakes, parking brake and back lights. Available with eyelet hitch or ball hitch.



Road trailer type C*

Adjustable tow-bar with height adjustable jockey wheel, hand brake, inertia brakes, parking brake and back lights. Available with eyelet hitch or ball hitch.



Road trailer type CM

Adjustable tow-bar with height adjustable jockey wheel, hand brake, inertia brakes, parking brake and back lights. Available with eyelet hitch or ball hitch.



Road trailer type D

Short straight tow-bar with height adjustable jockey wheel, hand brake, inertia brakes, parking brake and back lights. Available with eyelet hitch or ball hitch.



Road trailer type E

Straight tow-bar with height adjustable jockey wheel, hand brake, inertia brakes, parking brake and back lights. Available with eyelet hitch or ball hitch.

*Special quotation by request on this trailer type, not included in the Price List 2019. TBD by stock availability

TRAILERS



Straight site trailer

Straight tow-bar with height adjustable stabilizer. No brakes. Eyelet hitch only. Max. speed: 30 km/h



Foldable site trailer

Foldable tow-bar with height adjustable stabilizer. No brakes. Eyelet hitch only. Max. speed: 30 km/h

	Road Type A	Road Type B	Road Type C	Road Type CM	Road Type D	Road Type E	Site Straight	Site Foldable	Hand Trolley
TABLE OF TRAILERS									
V20 Hybrid	■	■	⊙	■	√	⊙	⊙	■	⊙
VT-Hybrid	√	■	■	⊙	⊙	⊙	⊙	⊙	⊙
VTS-A	■	■	■	■	⊙	⊙	⊙	√	⊙
V20 Hyper	■	■	⊙	■	√	⊙	⊙	■	⊙
V20	■	■	⊙	■	√	⊙	⊙	■	⊙
iQ20	■	■	⊙	■	√	⊙	⊙	■	⊙
VT1	√	■	■	⊙	⊙	⊙	⊙	⊙	⊙
VT-MINE	√	■	■	⊙	⊙	⊙	⊙	⊙	⊙
VTevo	■	■	⊙	■	⊙	⊙	√	⊙	⊙
VMAX	⊙	⊙	⊙	■	⊙	⊙	√	⊙	⊙
VT8	■	⊙	⊙	⊙	⊙	⊙	√	⊙	⊙
Linktower T3	⊙	⊙	⊙	⊙	⊙	⊙	⊙	⊙	√
MT1	⊙	⊙	⊙	⊙	⊙	■	⊙	⊙	√
MT2	⊙	⊙	⊙	⊙	⊙	⊙	⊙	⊙	√

Legend:

- √ Installed as standard
- Option to be installed if requested
- ⊙ Not available for this model

AMOSS kit

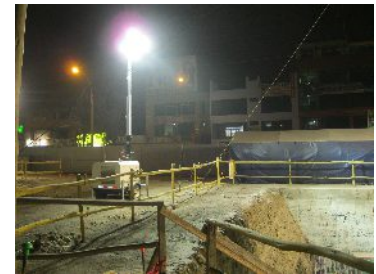


The AMOSS kit is an optional security feature to be connected to the handbrake and available for every mobile lighting tower equipped with any road trailer. It has two functions:

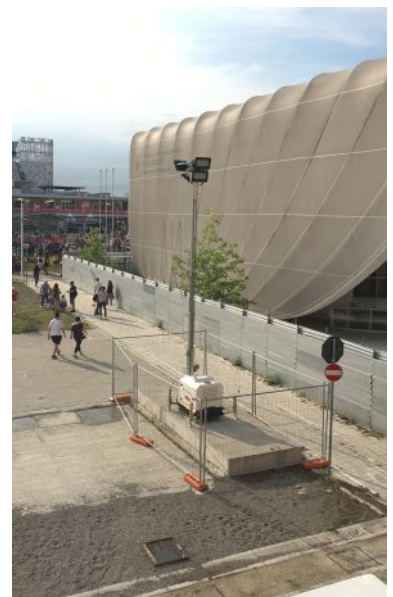
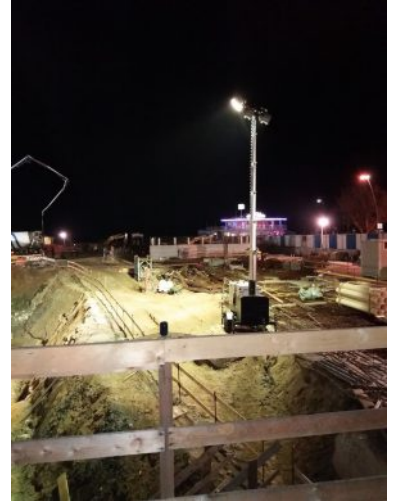
- 1) When the handbrake is released and the mast of the lighting tower is lowered, it is not possible to raise it.
- 2) When the handbrake is released and the mast is raised, it automatically lowers completely.

This feature can increase the safety of the lighting tower, preventing accidental damages suffered by things or people as a result of improper use or negligence of the operator.

APPLICATIONS



APPLICATIONS

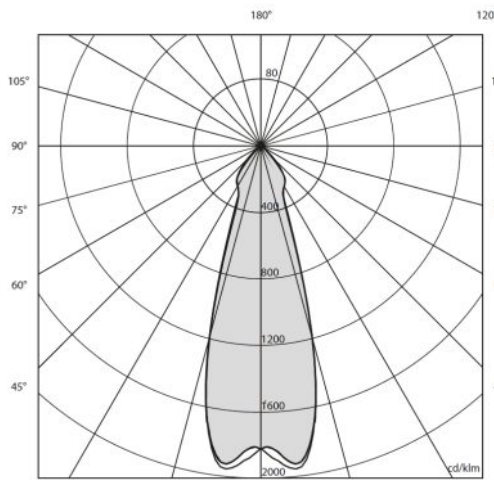


CERTIFICATIONS



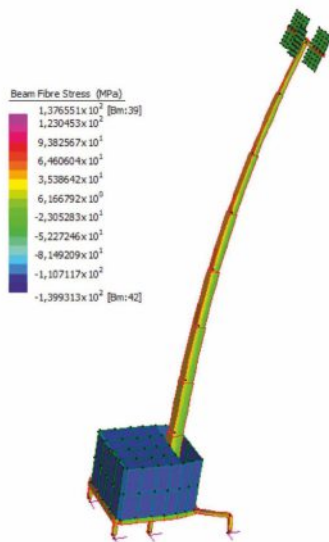
ISO 9001:2015

Generac Mobile® has implemented and maintains a management system for the design and manufacturing which fulfills the requirements of the ISO 9001:2015 / Quality Management System standards. This certification has been issued by a third-party independent authority.



ILLUMINATED AREA

The lighting towers manufactured by Generac Mobile® are equipped with floodlights of different type and wattage; each of them has been tested by a third-party independent authority to officially certify the luminous power.



WIND SPEED STABILITY

All the lighting towers manufactured by Generac Mobile® have a specific resistance to the wind speed, that is guaranteed only under a correct installation of the machine by following the instructions described on the user manual. The wind speed stability certifications have been issued by a third-party independent authority.

All the certifications are available on request. For further information please contact us at gmp.srl@generac.com

INDEX OF CONTENT

Lighting towers range	p. 02
Hybrid Line	
VT-Hybrid	p. 04
Hydro Power Box Hybrid	p. 05
CUBE ⁺ Hybrid	p. 06
CUBE ⁺ NEXT	p. 07
Solar Line	
VTS	p. 08
Mobile Line	
V20 Hyper	p. 09
V20	p. 10
iQ20	p. 11
VT-Mine	p. 12
VTevo	p. 13
VMAX	p. 14
VT8	p. 15
Linktower T4	p. 16
MT1	p. 17
MT2	p. 18
Stationary Line	
Hydro Power Box 360	p. 19
CUBE ⁺ Hyper	p. 20
CUBE ⁺ Super	p. 21
VTevoQ	p. 22
CTF 10	p. 23
CTF 5	p. 24
CTF 5.5 / 7 / 9	p. 24
TF 5 / 7	p. 24
Special lighting towers	p. 25
Features	
Main options	p. 26
MCP Manual Control Panel	p. 27
GTL01 Digital Controller	p. 28
GTL02 Digital Controller	p. 29
GTL03 Digital Controller	p. 30
Telemetry system	p. 31
Engines	p. 32
Trailers	p. 33
Applications	p. 35
Certifications	p. 37

NOTES

A series of horizontal dotted lines for taking notes.

DISTRIBUTOR:



Generac Mobile Products Srl
Part of Generac Power Systems, Inc.
Via Stazione, 3 bis - 27030 Villanova d'Ardenghi (PV) - Italy
Tel +39.0382.567011 - gmp.srl@generac.com
www.generacmobile.com