

# Parts List

## 8108.010 Magnum





---

# Table of Contents

<b>Introduction</b> .....	<b>2</b>
Specially approved products.....	2
<b>Product Description</b> .....	<b>3</b>
The data plate.....	3
<b>Exploded Views</b> .....	<b>4</b>
8108.010.....	4
<b>Spare Parts</b> .....	<b>5</b>
8108.010.....	5

# Introduction

## **Purpose of this manual**

The purpose of this manual is to provide necessary information on spare parts and accessories order.

## **Disclaimer**

Always use genuine Grindex parts. The use of other spare parts or accessories can invalidate any claims for warranty or compensation. Grindex does not take any responsibility for damages that are caused by the use of non-original parts. For more information, contact your local sales and service representative.

## **Data for ordering spare parts**

The following information is needed for spare part orders:

- Serial number of the product
- Part number
- Quantity of bulk material, see \* in tables

## **Specially approved products**

### **Qualification of personnel**

Only Grindex or Grindex-authorized service personnel may undertake repair work on Ex-approved products.

### **Dimensional accuracy inspection**

Spare parts marked with (Ex) after the part number are subject to dimensional accuracy inspection.

# Product Description

## Products included

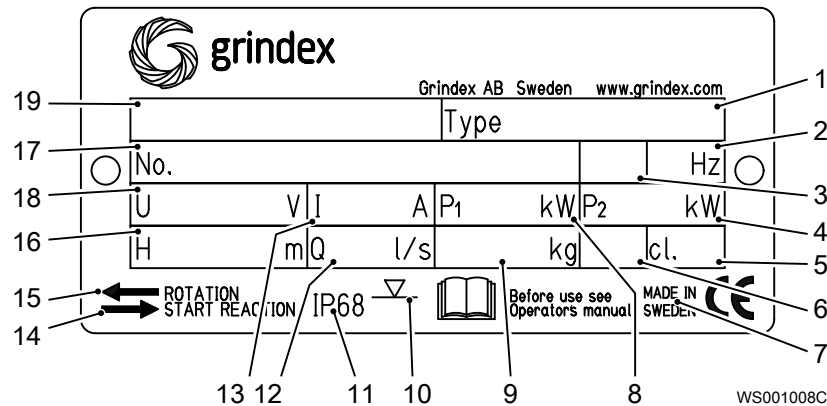
Pump model	Approvals
Magnum 8108.010	Standard

## The data plate

### Introduction

The data plate is a metal label located on the main body of the pump. The data plate lists key product specifications.

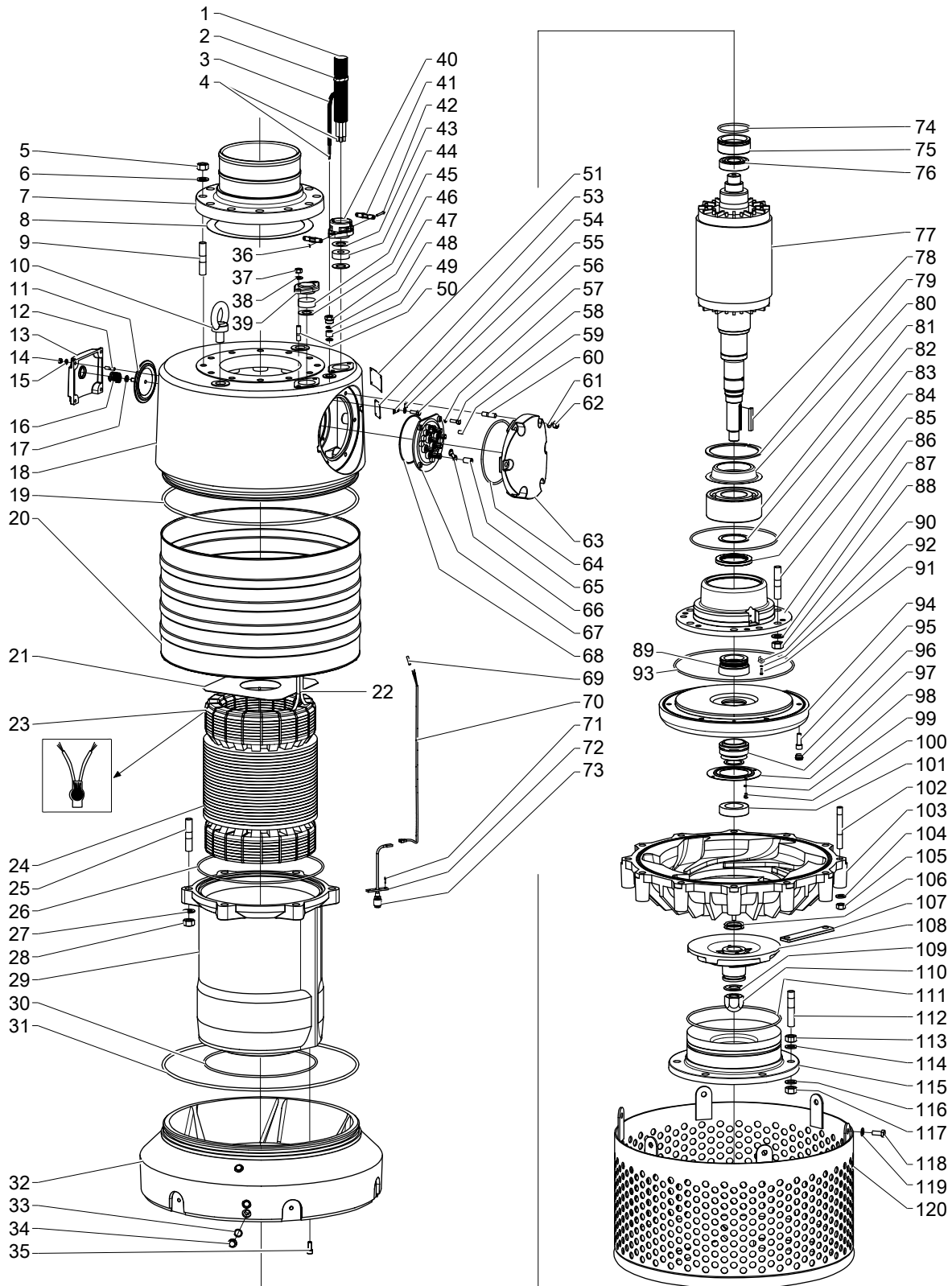
### The data plate



1. Pump type number
2. Frequency
3. Phases, type of current
4. Rated shaft power
5. Thermal class
6. Locked rotor code-letter
7. Country of origin
8. Maximum power consumption
9. Product weight
10. Maximum submersion depth
11. Degree of protection
12. Maximum capacity
13. Rated current
14. Direction of the start reaction
15. Direction of the impeller rotation
16. Maximum head
17. Serial number
18. Rated voltage
19. Pump model

# Exploded Views

## 8108.010



20177A\_8108\_010

# Spare Parts

## 8108.010

Pos. No	Part. No	Denomination	Qty/ Version	
			010	
1	410 852	Motor cable subcab	SUBCAB 4G10+S(2x0,5) 24 - 26mm	*
1	410 853	Motor cable subcab	SUBCAB 4G16+S(2x0,5) 26 - 28mm	*
1	410 854	Motor cable subcab	SUBCAB 4G25+S(2x0,5) 32 - 34mm	*
1	410 355	Motor cable	SUBCAB 1AWG/3-2-1-GC 40,70 - 42,70mm	*
2	132 297	Cable tie		15
3	130 963	Control cable subcab 2X1.5 OD = 10-11 MM		*
4	50 221 00	End sleeve 0.75 MM <sup>2</sup> ; L=6 MM		2
4	50 221 05	End sleeve 10 MM <sup>2</sup> ; L=12 MM		6
4	50 221 01	End sleeve 1.5 MM <sup>2</sup> ; L=7 MM		2
4	50 221 06	End sleeve 16 MM <sup>2</sup> ; L=12 MM		3-6
4	50 221 07	End sleeve 25 MM <sup>2</sup> ; L=15 MM		3-6
5	50 025 00	Hexagon nut M20-A2-70		12
6	50 025 02	Plain washer 20-A2-A-170		12
7	50 470 00	Discharge connection	DN 150 Hose	1
7	50 471 00	Discharge connection	DN 200 Hose	1
7	50 472 00	Discharge connection	DN 250 Hose	1
7	50 408 00	Discharge connection	DN 150 Thread : ISO G6 Inner	1
7	50 408 01	Discharge connection	DN 200 Thread : ISO G8 Inner	1
7	50 408 02	Discharge connection	DN 250 Thread : ISO G10 Inner	1
7	50 408 03	Discharge connection	DN 150 Thread : NPT 6-8 Inner	1
7	50 408 04	Discharge connection	DN 200 Thread : NPT 8-8 Inner	1
7	50 408 05	Discharge connection	DN 250 Thread : NPT 10-8 Inner	1
7	50 533 00	Discharge connection	DN 150 Drilled according to : ANSI B16.1-89; tab.5	1
7	50 533 01	Discharge connection	DN 200 Drilled according to : ANSI B16.1-89; tab.5	1
7	50 533 02	Discharge connection	DN 250 Drilled according to : ANSI B16.1-89; tab.5	1
8	50 409 00	Gasket 250 PN10		1

Pos. No	Part. No	Denomination	Qty/ Version	
			010	
9	50 025 03	Stud	12	
10	132 277	Lifting eye bolt M16	2	
11	130 745	Valve	1	
12	50 021 12	Stud M8X22-A2-70	4	
13	50 404 00	Cover	1	
14	50 021 37	Hexagon nut M8-A4-70	4	
15	132 289	Plain washer 8-A2-170	4	
16	130 752	Spring	1	
17	50 022 26	Plain washer 10-A4-170	1	
18	51 306 00	Main cover	1	
19	50 037 33	O-ring 588.0X8.4 NBR	1	
20	50 405 00	Outer casing	1	
21	50 539 00	Insulating sheet	1	
22	112 469	Insulating hose	*	
22	132 354	Insulating hose D=20 MM	*	
24	50 484 07	Stator 35-25-4a	6-leads 50 Hz 4-poles 400V D 690V Y P2=57kW 6-leads 60 Hz 4-poles 460V D P2=67kW/90hp	1
24	50 484 09	Stator 35-25-4a	6-leads 50 Hz 4-poles 500V-550V D P2=57kW	1
24	50 482 07	Stator 35-25-2a	6-leads 50 Hz 400V D 690V Y P2=57kW 6-leads 60 Hz 460V D P2=67kW/90hp	1
24	50 482 09	Stator 35-25-2a	6-leads 50 Hz 500V-550V D P2=57kW 6-leads 60 Hz 575V D P2=67kW/90hp	1
24	50 482 10	Stator 35-25-2a	12-leads 60 Hz 460V DSER 380V Y// P2=67kW/90hp 12-leads 60 Hz 230V D// P2=67kW/ 90hp	1
24	50 484 11	Stator 35-25-4a	12-leads 60 Hz 4-poles 460V DSER 380V Y// P2=67kW/90hp	1
25	50 025 03	Stud	6	
26	50 037 30	O-ring 379.3X5.7 NBR	1	
27	50 025 02	Plain washer 20-A2- A-170	6	
28	50 025 00	Hexagon nut M20-A2-70	6	
29	51 299 00	Stator housing	1	
30	131 929	O-ring 339.3X5.7 NBR	1	
31	50 037 33	O-ring 588.0X8.4 NBR	1	
32	51 300 00	Oil housing	1	



Pos. No	Part. No	Denomination	Qty/ Version
			010
33	133 064	O-ring 19.2X3 NBR	4
34	133 063	Inspection screw	4
35	50 022 17	Hex.socket hd screw M10X25-A4-70	3
36	131 402	Hexagon nut M5-A4-70	2-4
37	132 280	Hexagon nut M12-A2-70	4
38	132 274	Plain washer 12-A2-170	4
39	132 394	Cover	1
40	132 340	Entrance flange	1-2
41	131 943	Clamp	Cable entry (26)-28mm 2
41	131 941	Clamp	Cable entry (32)-34mm Cable entry (33)-35mm Cable entry (35)-37mm Cable entry (40)-42mm 2-4
41	50 216 03	Clamp	Cable entry (26)-28mm Cable entry (24)-26mm 4
42	132 327	Slotted head screw	Cable entry (26)-28mm Cable entry (24)-26mm 2-4
42	130 992	Slotted head screw	Cable entry (32)-34mm Cable entry (33)-35mm Cable entry (35)-37mm Cable entry (40)-42mm 2-4
43	131 950	Plain washer	2-4
43	132 336	Plain washer	2
43	132 312	Plain washer	2
43	132 341	Plain washer	2-4
43	131 934	Plain washer	2
44	131 935	Seal sleeve	1-2
44	132 337	Seal sleeve	1
44	132 315	Seal sleeve	1-2
44	132 339	Seal sleeve	1
44	131 933	Seal sleeve	1
44	410 718	Seal sleeve	1
45	132 453	Plug	1
46	131 950	Plain washer	2
46	410 598	Plain washer	2
47	132 343	Gland screw	1
48	132 344	Plain washer	Aux. cable entry (10)-12mm 2
48	132 455	Plate	Plugged aux. cable entry 2
49	132 345	Seal sleeve	Aux. cable entry (10)-12mm 1

Pos. No	Part. No	Denomination	Qty/ Version
			010
49	132 454	Plug	1
50	132 279	Stud M12X30-A2-70	4
51	50 888 00	Data plate	1
52	410 000	Drive screw 4X5-A2/A4	2
53	-	Sticker	1
54	132 347	Earthing plate FM/PTB	2
55	-	Cable lug 0.50-1.65; M8	1
55	131 799	Cable lug D8 16 MM2	1-2
55	132 609	Cable lug D8 25 MM2	1-2
56	132 288	Hexagon head screw M8X20-A2-70	2
57	132 289	Plain washer 8-A2-170	4
58	130 642	Hexagon head screw M8X25-A2-70	4
60	132 279	Stud M12X30-A2-70	6
61	132 274	Plain washer 12-A2-170	6
62	132 280	Hexagon nut M12-A2-70	6
63	50 403 00	Cover	1
64	50 037 45	O-ring 184.3X5.7 NBR	1
67	133 119	Con.term.board unit	1
67,1	133 120	Connection term boar	1
67,2	132 350	Closing link	3
67,3	132 353	Domed cap nut	12
67,4	132 351	Domed cap nut	4
68	410 833	O-ring 139.5X3 NBR	1
69	131 273	Butt connector	1
70	50 698 00	Cable unit FLS10	1
71	50 018 00	Hex.socket hd screw	2
72	50 402 00	Bracket	1
73	50 486 01	Level sensor FLS10	1
74	132 355	O-ring 89.1X5.7 NBR	1
75	132 357	Bearing guide	1
76	132 358	Ball bearing 40X90X23	1
77	50 394 00	Shaft unit	1
78	410 193	Parallel key 12X8X63	1
79	50 279 02	Retaining ring	1
80	50 417 01	Bearing cover	1
81	50 391 01	Ball bearing	1

Pos. No	Part. No	Denomination	Qty/ Version
			010
82	50 278 01	Retaining ring	1
83	132 415	O-ring 259.3X5.7 NBR	1
84	50 763 00	Gasket	1
85	50 025 04	Stud	6
86	50 418 04	Bearing holder	1
87	50 025 02	Plain washer 20-A2-A-170	6
88	50 025 00	Hexagon nut M20-A2-70	6
89	-	Mechanical seal	1
90	50 414 00	Lock washer	1
91	50 020 08	Hexagon head screw	1
93	50 037 31	O-ring 359.3X5.7 NBR	1
94	50 401 04	Oil housing coated	L N
94	50 401 03	Oil housing coated	H
95	130 957	Hex.socket hd screw M12X30-A2-70	6
96	50 480 00	Protective plug	6
97	50 396 01	Mechanical seal	1
98	50 413 00	Lock washer	1
100	50 020 08	Hexagon head screw	4
101	50 595 00	Spacer	1
102	132 263	Stud	L
102	50 024 02	Stud M16X110-A2-70	N H
103	51 302 00	Diffuser coat.	L
103	51 311 00	Diffuser coat.	N
103	51 304 00	Diffuser coat.	H
105	132 256	Hexagon nut M16-A2-70	12
106	50 174 03	Washer 0.3 MM	5
106	50 174 04	Adjusting washer 0.5 MM	3
107	50 541 00	Bracket	2
108	50 583 00	Impeller	L50Hz
108	50 388 01	Impeller	L60Hz
108	50 385 02	Impeller	N50Hz
108	50 385 03	Impeller	N60Hz
108	50 382 04	Impeller	H50Hz
108	50 382 05	Impeller	H60Hz
109	50 415 00	Lock washer	1
110	50 410 00	Acorn nut	1
111	410 563	O-ring 289.3X5.7 NBR	L

Pos. No	Part. No	Denomination		Qty/ Version
				010
111	132 411	O-ring 399.3X5.7 NBR	N	1
111	50 037 32	O-ring 279.3X5.7 NBR	H	1
112	50 024 03	Stud M16X1.5X100- A2-70	L N	6
112	50 025 06	Stud M20X1.5X110- A2-70	H	6
113	50 024 04	Hexagon nut M16X1.5- A2	L N	6
113	50 025 07	Hexagon nut M20X1.5- A2	H	6
114	132 258	Plain washer 16-A2- A-170	L N	6
114	50 025 02	Plain washer 20-A2- A-170	H	6
115	51 303 00	Suction cover	L	1
115	51 312 00	Suction cover	N	1
115	51 305 00	Suction cover	H	1
116	132 258	Plain washer 16-A2- A-170	L N	6
116	50 025 02	Plain washer 20-A2- A-170	H	6
117	50 024 04	Hexagon nut M16X1.5- A2	L N	6
117	50 025 07	Hexagon nut M20X1.5- A2	H	6
118	132 407	Hexagon head screw M12X30-A2-70		6
119	132 274	Plain washer 12-A2-170		6
120	50 406 00	Strainer		1









Grindex  
Gesällvägen 33  
174 87 Sundbyberg  
Sweden  
Tel: +46-8-606 66 00  
Fax: +46-8-745 53 28  
[www.grindex.com](http://www.grindex.com)

Visit our Web site for the latest version of this document  
and more information

The original instruction is in English. All non-English  
instructions are translations of the original instruction.

© 2014 Grindex