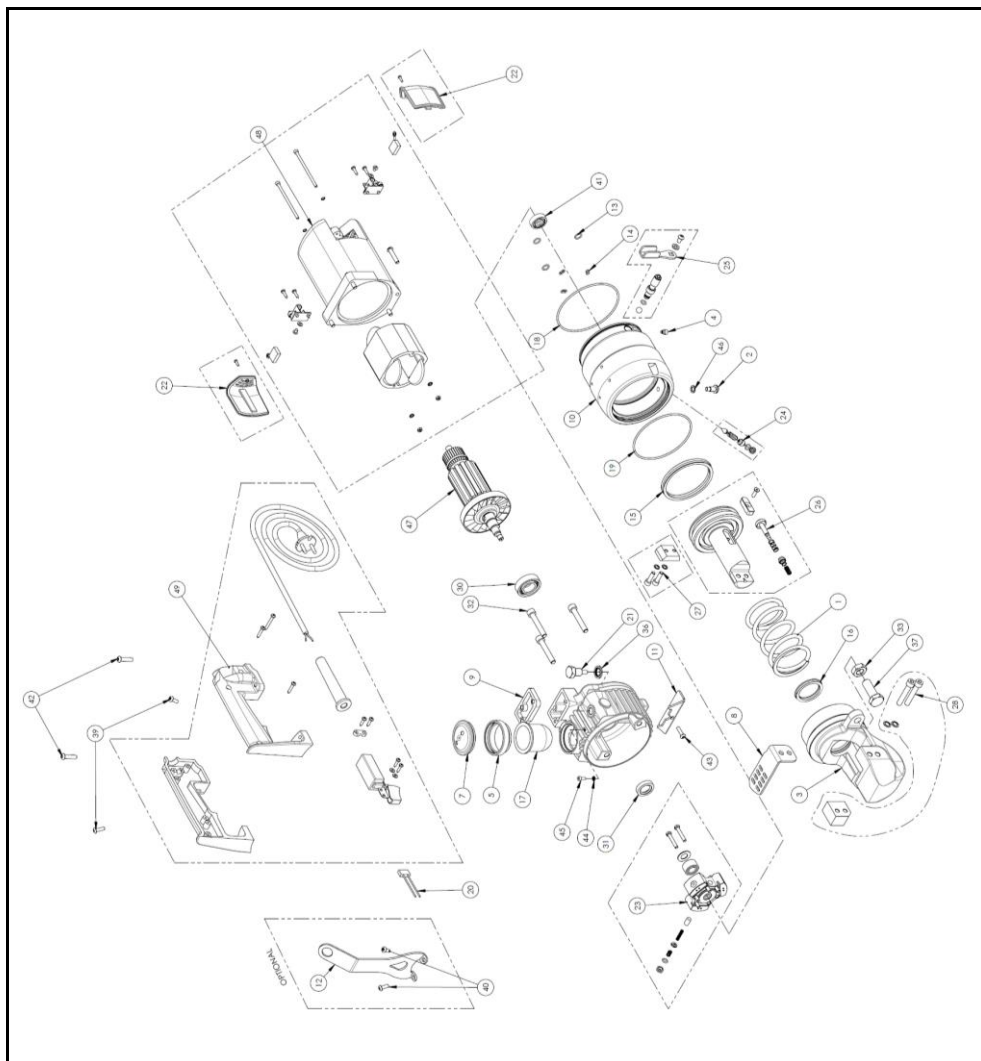


Macchine ed attrezzature per edilizia, industria e soccorso

Via Callesello, 4 – 31030 Borso Del Grappa – TV

<http://www.edilgrappa.com>

## EXPLODED VIEW CUTTER T28N 230V Item 1.50.2016



| Pos. | Item      | Description      | Q.ty |
|------|-----------|------------------|------|
| 1    | 110.03720 | Spring           | 1    |
| 2    | 110.04073 | Screw            | 1    |
| 3    | 110.04167 | Head             | 1    |
| 4    | 110.04340 | Screw            | 1    |
| 5    | 110.04404 | Extension        | 1    |
| 6    | 110.04405 | Tank             | 1    |
| 7    | 110.04407 | Cover            | 1    |
| 8    | 110.04540 | Protection       | 1    |
| 9    | 110.04683 | Shim             | 1    |
| 10   | 110.04696 | Cylinder         | 1    |
| 11   | 110.06241 | Support          | 1    |
| *12  | 110.06901 | Hook (Optional)  | 1    |
| 13   | 130.00015 | O-ring           | 3    |
| 14   | 130.00017 | O-ring           | 3    |
| 15   | 130.00048 | Gasket           | 1    |
| 16   | 130.00527 | Gasket           | 1    |
| 17   | 130.00537 | Membrane         | 1    |
| 18   | 130.01830 | O-ring           | 1    |
| 19   | 130.01888 | O-ring           | 1    |
| 20   | 140.00002 | Filter           | 1    |
| 21   | 150.00227 | Cap              | 1    |
| 22   | 150.01392 | Cover            | 2    |
| 23   | 150.01800 | Pump             | 1    |
| 24   | 150.01919 | Valve            | 1    |
| 25   | 150.01922 | Valve            | 1    |
| 26   | 150.02633 | Piston           | 1    |
| 27   | 150.02774 | Mobile blade     | 1    |
| 28   | 150.02775 | Stationary blade | 1    |
| 29   | 160.00003 | Bearing          | 1    |
| 30   | 160.00013 | Bearing          | 1    |
| 31   | 160.00014 | Oil seal         | 1    |
| 32   | 160.00174 | Screw            | 1    |

|     |           |                  |   |
|-----|-----------|------------------|---|
| 33  | 160.00220 | Nut              | 1 |
| 34  | 160.00303 | Washer           | 4 |
| 35  | 160.00324 | Ring             | 4 |
| 36  | 160.00337 | Washer           | 1 |
| 37  | 160.00805 | Screw            | 1 |
| 38  | 160.00938 | Screw            | 4 |
| 39  | 160.00940 | Screw            | 2 |
| *40 | 160.00948 | Screw (Optional) | 2 |
| 41  | 160.01023 | Bearing          | 1 |
| 42  | 160.01105 | Screw            | 2 |
| 43  | 160.03068 | Screw            | 1 |
| 44  | 160.03069 | Washer           | 1 |
| 45  | 160.03087 | Screw            | 1 |
| 46  | 170.00006 | Washer           | 1 |
| 47  | 200.00005 | Armature         | 1 |
| 48  | 200.00006 | Motor            | 1 |
| 49  | 200.00062 | Handle           | 1 |

