

## Parts List

### 8116.390 Major Inox





---

# Table of Contents

<b>Introduction</b> .....	<b>2</b>
Specially approved products.....	2
<b>Product Description</b> .....	<b>3</b>
The data plate.....	3
<b>Exploded Views</b> .....	<b>4</b>
8116.390.....	4
<b>Spare Parts</b> .....	<b>5</b>
8116.390.....	5

# Introduction

## **Purpose of this manual**

The purpose of this manual is to provide necessary information on spare parts and accessories order.

## **Disclaimer**

Always use genuine Grindex parts. The use of other spare parts or accessories can invalidate any claims for warranty or compensation. Grindex does not take any responsibility for damages that are caused by the use of non-original parts. For more information, contact your local sales and service representative.

## **Data for ordering spare parts**

The following information is needed for spare part orders:

- Serial number of the product
- Part number
- Quantity of bulk material, see \* in tables

## **Specially approved products**

### **Qualification of personnel**


Only Grindex or Grindex-authorized service personnel may undertake repair work on Ex-approved products.

### **Dimensional accuracy inspection**

Spare parts marked with (Ex) after the part number are subject to dimensional accuracy inspection.

# Product Description

## Products included

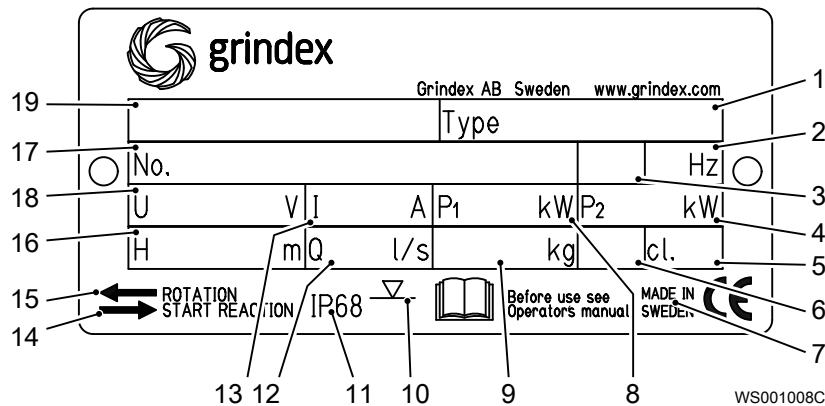
Pump model	Approvals
Major INOX 8116.390	Standard European Norm (EN) <ul style="list-style-type: none"> <li>• ATEX Directive</li> <li>• EN 1127-1, EN 60079-0, EN 60079-15</li> <li>•  II 3G Ex nA/nC c IIC T1...T4</li> </ul>

## The data plate

### Introduction

The data plate is a metal label located on the main body of the pump. The data plate lists key product specifications.

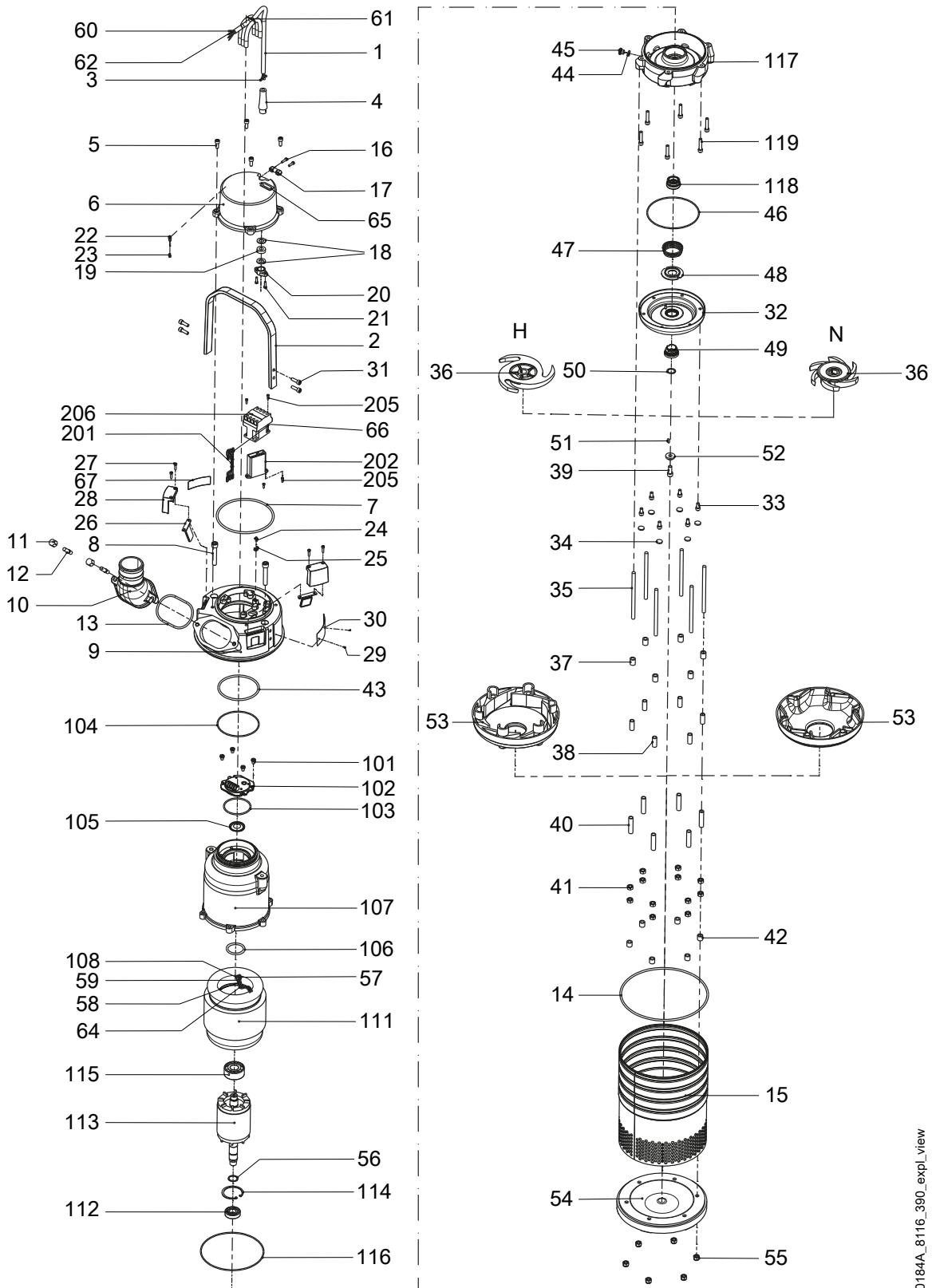
### The data plate



1. Pump type number
2. Frequency
3. Phases, type of current
4. Rated shaft power
5. Thermal class
6. Locked rotor code-letter
7. Country of origin
8. Maximum power consumption
9. Product weight
10. Maximum submersion depth
11. Degree of protection
12. Maximum capacity
13. Rated current
14. Direction of the start reaction
15. Direction of the impeller rotation
16. Maximum head
17. Serial number
18. Rated voltage
19. Pump model

# Exploded Views

## 8116.390



20184A\_8116\_390\_expl\_view

# Spare Parts

## 8116.390

Pos. No	Part. No	Denomination	Qty/ Version
			390
1	131 039	Motor cable subcab SUBCAB 4G2,5 12,50 - 13,50mm Starter (Phase shifter) 220V - 575 V Current range: 0 - 16 A	*
1	133 139	Motor cable subcab Starter 50/60 Hz Current range: 0 - 22 A SUBCAB 4G4 16 - 17mm	*
1	410 065	Motor cable subcab SUBCAB 14AWG/4 14,20 - 15,20mm Starter (Phase shifter) 220V - 575 V Current range: 0 - 16 A	*
2	50 721 00	Lifting handle	1
3	50 040 04	Flat pin sleeve 1-2.5MM2 SUBCAB 14AWG/4 14,20 - 15,20mm SUBCAB 4G2,5 12,50 - 13,50mm	4
3	50 040 05	Insulating sleeve 0.5-6 MM2 SUBCAB 14AWG/4 14,20 - 15,20mm SUBCAB 4G4 16 - 17mm SUBCAB 4G2,5 12,50 - 13,50mm	4
3	50 040 07	Flat pin sleeve 2.5-6MM2 SUBCAB 4G4 16 - 17mm	4
4	50 428 01	Bending protection SUBCAB 4G2,5 12,50 - 13,50mm	1
4	50 428 03	Bending protection SUBCAB 4G4 16 - 17mm	1
4	50 428 02	Bending protection SUBCAB 14AWG/4 14,20 - 15,20mm	1
5	50 021 33	Hex.socket hd screw M8X20-A4-80	4
6	50 708 00	Entrance cover	1
7	50 037 22	O-ring 159,3X5,7 FPM	1
8	50 023 00	Hex.socket hd screw	2
9	50 737 00	Main cover	1
10	50 732 00	Discharge connection DN 75 Hose	1
10	50 732 01	Discharge connection DN 75 Thread : ISO G3A Outer	1
10	50 732 02	Discharge connection DN 75 Thread : NPT 3-8 Outer	1
10	50 734 00	Discharge connection DN 100 Hose	1
10	50 734 01	Discharge connection DN 100 Thread : ISO G4A Outer	1
10	50 734 02	Discharge connection DN 100 Thread : NPT 4-8 Outer	1
11	50 022 25	Acorn nut	2
12	50 022 21	Stud	2
13	50 037 23	O-ring 104.14X5.34 FPM	1
14	50 037 24	O-ring 259.3X3.0 FPM	1
15	50 062 17	Outer casing	1

Pos. No	Part. No	Denomination	Qty/ Version	
			390	
16	50 019 00	Hex.socket hd screw M5X18-A4-70	2	
17	50 725 00	Cable clip	1	
18	50 016 14	Plain washer	Cable entry (12)-14mm	2
18	50 016 15	Plain washer	Cable entry (14)-16mm	2
18	50 016 16	Plain washer	Cable entry (16)-18mm	2
19	50 015 01	Seal sleeve	Cable entry (12)-14mm	1
19	50 015 02	Seal sleeve	Cable entry (14)-16mm	1
19	50 015 03	Seal sleeve	Cable entry (16)-18mm	1
20	50 726 00	Entrance flange		1
21	50 019 00	Hex.socket hd screw M5X18-A4-70		2
22	50 119 00	Flat pin sheet		1
23	50 018 04	Hex.socket hd screw M4X6-A4-70		1
24	133 525	Earthing screw		1
25	50 119 00	Flat pin sheet		1
26	50 013 00	Air release valve		2
27	50 019 00	Hex.socket hd screw M5X18-A4-70		4
28	50 722 00	Air release valve		2
29	410 393	Drive screw 4X5-A4		2
30	50 888 00	Plate-blank		1
31	50 021 30	Hex.socket hd screw M8X25-A4-80		4
32	50 578 06	Oil housing coated	N B DN 100 Diffusor material: NBR	1
32	50 578 07	Oil housing coated	H B DN 75 Diffusor material: NBR	1
33	50 021 32	Hex.socket hd screw M8X16-A4-70		6
34	140 114	Protective washer	N B DN 100 Diffusor material: NBR	6
34	133 060	Protective plug	H B DN 75 Diffusor material: NBR	6
35	50 022 18	Stud		6
36	50 799 00	Impeller	N 50Hz	1
36	50 799 01	Impeller	N 60Hz	1
36	50 800 00	Impeller	H 50Hz	1
36	50 800 01	Impeller	H 60Hz	1
37	50 316 02	Sleeve	N 50Hz N 60Hz	6
37	50 316 01	Sleeve	H 50Hz	6
37	50 316 00	Sleeve	H 60Hz	6



Pos. No	Part. No	Denomination	Qty/ Version
			390
38	50 317 03	Spacing sleeve N	6
38	50 317 04	Spacing sleeve H	6
39	133 148	Hex.socket hd screw	1
40	50 317 05	Spacing sleeve N	6
40	50 317 04	Spacing sleeve H	6
41	50 022 22	Hexagon nut M10-A4-70	12
42	50 316 01	Sleeve	6
43	50 037 07	O-ring 117.5X5.34 FPM	1
44	50 037 13	O-ring 12.37X2.62 FPM	1
45	50 705 00	Inspection screw	1
46	50 037 25	O-ring 156X3 FPM	1
47	50 559 01	Compression spring	1
48	50 740 00	Plate	1
49	50 789 00	Mechanical seal	1
50	50 750 00	Adjusting washer	10
51	50 205 03	Parallel key 2306-5X5X14-A4-220HB	1
52	50 022 27	Plain washer	1
53	50 141 07	Diffuser coat. N	1
53	50 320 08	Diffuser coat. H	1
54	50 720 00	Strainer bottom	1
55	50 131 01	Lock nut M10-A4-70	6
56	130 818	Retaining ring 25- SPRING STEEL	1
57	50 040 05	Insulating sleeve 0.5-6 MM2	8-11
58	50 040 09	Flat pin sleeve 0.75-1.5MM2	2
59	50 040 04	Flat pin sleeve 1-2.5MM2	6-9
60	50 221 02	End sleeve 2.5 MM2; L=7 MM SUBCAB 14AWG/4 14,20 - 15,20mm SUBCAB 4G2,5 12,50 - 13,50mm	4
60	50 221 03	End sleeve 4 MM2; L=10 MM SUBCAB 4G4 16 - 17mm	4
61	105 839	Cable tie 98X2.5 MM	1
62	-	Marking tape	1
63	410 053	Oil ISO VG 32	*
64	410 139	Insulating hose D=12 MM	*
65	50 898 00	Marking tape	1
66	50 509 00	Cable set	1

Pos. No	Part. No	Denomination	Qty/ Version
			390
67	50 992 00	Sticker CUT HAZARD	1
68	51 735 00	Sticker	2
68	51 735 01	Sticker	2
69	51 622 00	Connection plate	1
70	410 034	Closed-end splice 3-6(AWG 12-10) L=18	3
101	50 021 31	Slotted head screw	4
102	50 009 01	Connection term boar	1
103	50 037 27	O-ring 74.61X3.53 FPM	1
104	50 037 09	O-ring 119.5X3 FPM	1
105	140 326	Bearing cover	1
106	50 037 26	O-ring 47.2X3.53 FPM	1
107	50 762 00	Stator housing	1
108	410 034	Closed-end splice 3-6(AWG 12-10) L=18	3
111	50 306 05	Stator 19-10-2b	6-leads 50 Hz 380V-415V Y P2=6,30kW
111	50 306 09	Stator 19-10-2b	6-leads 50 Hz 500V-550V D P2=6,30kW
111	50 306 14	Stator 19-10-2b	9-leads 60 Hz 440V-460V YSER 220V-230V Y// P2=6,70kW/9hp
111	50 306 16	Stator 19-10-2b	6-leads 60 Hz 575V-600V D P2=6,70kW/9hp
112	140 337	Ball bearing	1
113	50 731 00	Shaft unit	1
114	140 064	Retaining ring SGH 62	1
115	140 059	Ball bearing 3305A-2Z/ C3VT113	1
116	50 037 17	O-ring 183.5X3 FPM	1
117	50 712 00	Bearing holder	1
118	50 534 00	Mechanical seal	1
119	50 021 29	Hex.socket hd screw M8X40-A4-70	6
120	-	Sticker	1
201	50 035 01	Cable unit	1
202	51 511 05	Motor protector SMART	50Hz 500V 50Hz 380V - 415V
202	51 511 06	Motor protector SMART	60Hz 440V - 460V 60Hz 575V - 600V
203	50 018 00	Hex.socket hd screw	2
205	50 018 00	Hex.socket hd screw	2

Pos. No	Part. No	Denomination		Qty/ Version
				390
206	50 353 17	Contacteur	50Hz 380V - 415V	1
206	410 812	Contacteur	50Hz 500V 60Hz 440V - 460V	1
206	410 891	Contacteur	60Hz 575V - 600V	1
300	50 102 00	Phase shifter	Starter (Phase shifter) 220V - 575 V Current range: 0 - 16 A	1
300	50 102 01	Phase shifter	Starter 50/60 Hz Current range: 0 - 22 A	1
400	50 100 01	Plug contact	380V - 415 V Supply connection CEE 5- PLUG 32A	1
400	50 100 10	Plug contact	500V - 16 A	1
400	50 100 11	Plug contact	500V - 32 A	1
800	50 085 12	O-ring kit		1
801	-	Zinc anode kit		1
900	51 173 00	Basic repair kit		1



Grindex  
Gesällvägen 33  
174 87 Sundbyberg  
Sweden  
Tel: +46-8-606 66 00  
Fax: +46-8-745 53 28  
[www.grindex.com](http://www.grindex.com)

Visit our Web site for the latest version of this document  
and more information

The original instruction is in English. All non-English  
instructions are translations of the original instruction.

© 2014 Grindex