

Parts List

8106.181 Matador



Table of Contents

Introduction	2
Specially approved products.....	2
Product Description	3
Products included.....	3
The data plate.....	3
Exploded Views	4
8106.181.....	4
Spare Parts	5
8106.181.....	5

Introduction

Purpose of this manual

The purpose of this manual is to provide necessary information on spare parts and accessories order.

Disclaimer

Always use genuine Grindex parts. The use of other spare parts or accessories can invalidate any claims for warranty or compensation. Grindex does not take any responsibility for damages that are caused by the use of non-original parts. For more information, contact your local sales and service representative.

Data for ordering spare parts

The following information is needed for spare part orders:

- Serial number of the product
- Part number
- Quantity of bulk material, see * in tables

Specially approved products

Qualification of personnel

Only Grindex or Grindex-authorized service personnel may undertake repair work on Ex-approved products.

Dimensional accuracy inspection

Spare parts marked with (Ex) after the part number are subject to dimensional accuracy inspection.

Product Description

Products included

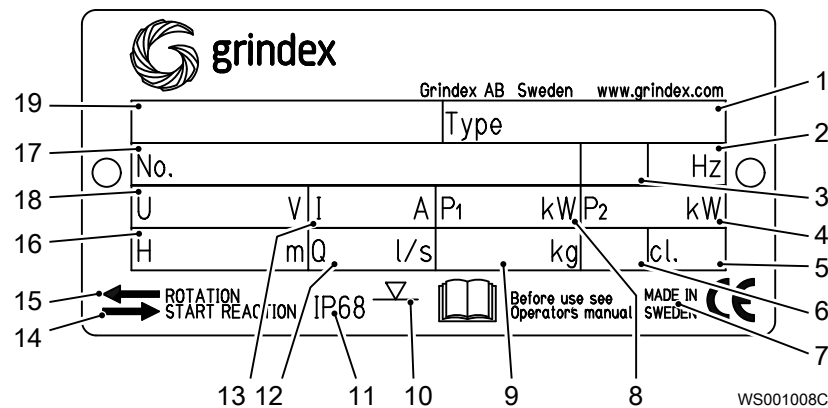
Pump model	Standard	EX	MSHA	Drainage	Sludge
Matador 8106.181	X			X	

The data plate

Introduction

The data plate is a metal label located on the main body of the pump. The data plate lists key product specifications.

The data plate

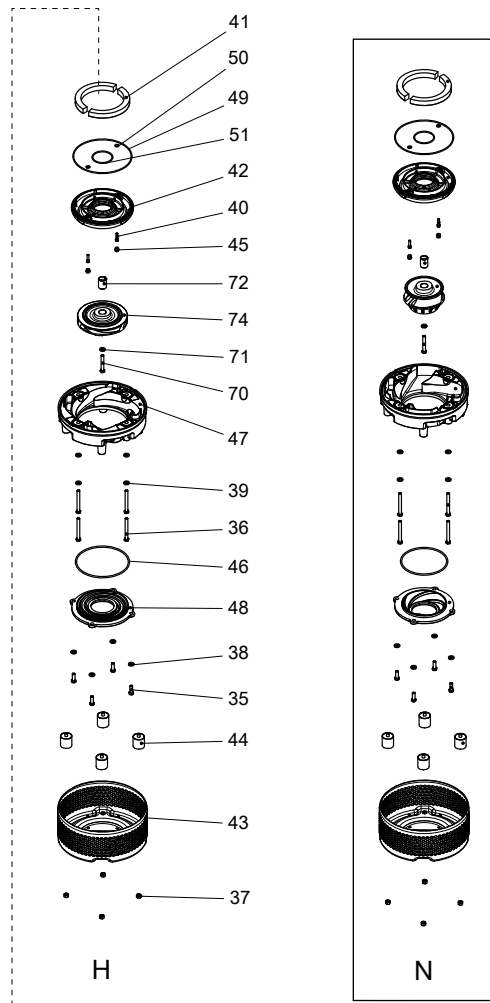
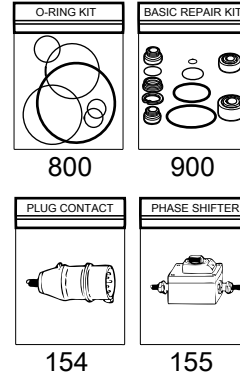
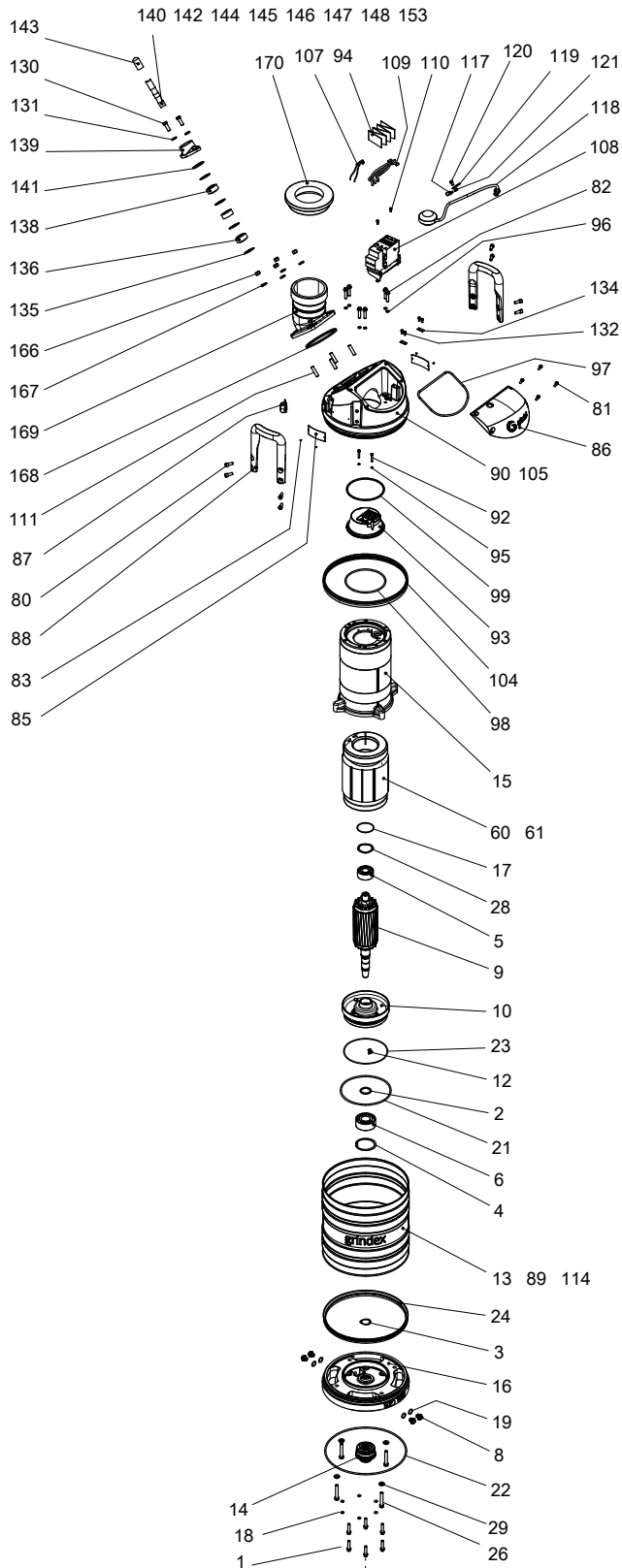


1. Pump type number
2. Frequency
3. Phases, type of current
4. Rated shaft power
5. Thermal class
6. Locked rotor code-letter
7. Country of origin
8. Maximum power consumption
9. Product weight
10. Maximum submersion depth
11. Degree of protection
12. Maximum capacity
13. Rated current
14. Direction of the start reaction
15. Direction of the impeller rotation
16. Maximum head
17. Serial number
18. Rated voltage
19. Pump model

Product approvals for hazardous locations

Exploded Views

8106.181



20149B_expl_view_8106.181

Spare Parts

8106.181

Pos. No	Part. No	Denomination	Qty/Version
			181
1	410 076	Hexagon flange screw M10X45-A2-70	6
2	410 079	Supporting washer 40X50X2.5	1
3	410 081	Retaining ring SGA 40	1
4	410 093	Retaining ring JB 90	1
5	410 100	Ball bearing 30X72X30.2 MM	1
6	410 101	Ball bearing 40X90X36.5 MM	1
7	410 053	Oil ISO VG 32	*
8	133 063	Inspection screw	4
9	51 029 03	Shaft unit	1
10	51 032 00	Bearing holder	1
12	51 041 00	Hexagon head screw	1
13	50 867 00	Cooling jacket	1
14	51 745 51	Mechanical seal	1
15	51 740 00	Stator housing	1
16	51 741 00	Adapter	1
17	410 084	O-ring 71.2X3 FPM	1
18	50 037 34	O-ring 10.3X2.4 NBR	6
19	410 487	O-ring 19.2X3 FPM	4
21	132 422	O-ring 219.3X5.7 NBR	1
22	50 037 31	O-ring 359.3X5.7 NBR	1
23	410 022	O-ring 175X3 NBR	1
24	51 059 00	Seal ring	1
25	50 136 00	Instruction label	1
26	410 198	Hexagon head screw M12X70-A2-70	4
28	410 080	Spring washer 71.5X59X0.55 MM	1
29	132 424	Plain washer 12-A2-170	4
35	410 197	Hexagon head screw M12X35-A2-70	4
36	410 075	Hexagon head screw M12X110-A2-70	4
37	410 011	Hexagon nut M12-A4-70	4

Pos. No	Part. No	Denomination	Qty/Version
			181
38	132 424	Plain washer 12-A2-170	4
39	132 424	Plain washer 12-A2-170	4
40	50 021 18	Hex.socket hd screw M8X30-A4-70	2
41	410 106	Pressure equalizer L=310 MM	2
42	51 043 00	Seal housing cov.coa	1
43	51 044 01	Strainer	1
44	51 045 00	Damper complete	4
45	133 060	Protective plug	2
46	132 314	O-ring 189.3X5.7 NBR	N 1
46	132 422	O-ring 219.3X5.7 NBR	H 1
47	51 019 00	Diffuser coat. NBR	N 1
47	51 019 01	Diffuser coat. PU	N 1
47	51 018 00	Diffuser coat. NBR	H 1
47	51 018 01	Diffuser coat. PU	H 1
48	51 042 00	Suction cover	N Material suction cover: Hard iron 1
48	51 040 00	Suction cover	H Material suction cover: Hard iron 1
48	51 390 01	Suction cover	H Material suction cover: Stainless steel 1
49	410 900	O-ring 246.0X4.0 FPM	1
50	410 096	O-ring 11.6X2.9 FPM	2
51	410 097	O-ring 84.4X4 FPM	1
60	51 007 08	Stator 21-18-2b	6-leads 3-phase 60 Hz 2- poles 200V-208V D 415V Y 1
60	51 007 02	Stator 21-18-2b	6-leads 3-phase 50 Hz 2- poles 220V-240V D 3-phase 50Hz 380V-400V Y 3-phase 60Hz 440V-480V Y 1
60	51 007 06	Stator 21-18-2b	3-phase 60Hz 220V-240V D 1
60	51 007 04	Stator 21-18-2b	9-leads 3-phase 60 Hz 2- poles 220V-240V Y// 9-leads 3-phase 60 Hz 2- poles 440V-480V YSER 1
60	51 007 11	Stator 21-18-2b	12-leads 3-phase 60 Hz 2- poles 220V-230V D// 12-leads 3-phase 60 Hz 2- poles 380V-400V Y// 12-leads 3-phase 60 Hz 2- poles 440V-460V DSER 1

Pos. No	Part. No	Denomination	Qty/Version	
			181	
60	51 007 07	Stator 21-18-2b	6-leads 3-phase 50 Hz 2-poles 380V-400V D 6-leads 3-phase 60 Hz 2-poles 220V-480V D 6-leads 3-phase 50 Hz 2-poles 660V-690V Y	1
60	51 007 12	Stator 21-18-2b	3-leads 3-phase 60 Hz 2-poles 460V Y	1
60	51 007 10	Stator 21-18-2b	6-leads 3-phase 60 Hz 2-poles 380V-400V D	1
60	51 007 01	Stator 21-18-2b	6-leads 3-phase 50 Hz 2-poles 415V-440V D	1
60	51 007 03	Stator 21-18-2b	6-leads 3-phase 50 Hz 2-poles 500V D 6-leads 3-phase 60 Hz 2-poles 575V-600V D	1
60	51 007 13	Stator 21-18-2b	3-leads 3-phase 60 Hz 2-poles 575V-600V Y	1
60	51 007 05	Stator 21-18-2b	6-leads 3-phase 50 Hz 2-poles 1000V Y 6-leads 3-phase 50 Hz 2-poles 525V-550V D	1
61	410 033	Closed-end splice 4.0-9.0 (AWG 8) L=28	9-leads 3-phase 60 Hz 2-poles 220V-240V Y// 12-leads 3-phase 60 Hz 2-poles 380V-400V Y// 9-leads 3-phase 60 Hz 2-poles 440V-480V YSER	1
61	410 033	Closed-end splice 4.0-9.0 (AWG 8) L=28	9-leads 3-phase 60 Hz 2-poles 220V-240V Y// 12-leads 3-phase 60 Hz 2-poles 380V-400V Y// 9-leads 3-phase 60 Hz 2-poles 440V-480V YSER	2
61	410 033	Closed-end splice 4.0-9.0 (AWG 8) L=28	9-leads 3-phase 60 Hz 2-poles 220V-240V Y// 12-leads 3-phase 60 Hz 2-poles 380V-400V Y// 9-leads 3-phase 60 Hz 2-poles 440V-480V YSER	3
70	410 074	Hexagon head screw M12X80-A4-80		1
71	132 424	Plain washer 12-A2-170		1
72	51 746 00	Sleeve unit		1
74	51 014 50	Impeller	N 50Hz 3-phase Maximum temperature 40 DC Material Hard-Iron TM	1

Pos. No	Part. No	Denomination	Qty/Version
			181
74	51 014 52	Impeller N 60Hz 3-phase Maximum temperature 40 DC Material Hard-Iron TM	1
74	51 013 50	Impeller H 50Hz 3-phase Maximum temperature 40 DC Material Hard-Iron TM	1
74	51 013 52	Impeller H 60Hz 3-phase Maximum temperature 40 DC Material Hard-Iron TM	1
74	51 386 02	Impeller H 50Hz 3-phase Maximum temperature 40 DC Material Stainless steel, castings	1
74	51 386 03	Impeller H 60Hz 3-phase Maximum temperature 40 DC Material Stainless steel, castings	1
74	-	Impeller	1
80	50 022 17	Hex.socket hd screw M10X25-A4-70	8
81	50 021 33	Hex.socket hd screw M8X20-A4-80	4
82	410 076	Hexagon flange screw M10X45-A2-70	6
83	410 000	Drive screw 4X5-A2/A4	2
84	132 354	Insulating hose D=20 MM	*
85	50 888 00	Plate-blank	1
86	50 994 01	Cover	1
87	50 869 00	Air release valve	1
88	50 866 00	Handle compl.	2
89	50 992 00	Sticker CUT HAZARD	1
90	51 739 00	Main cover	1
91	50 457 02	Cable tie 292X3.5 MM	2
92	410 757	Hex.socket hd screw M6X35-A2-70	2
93	51 742 00	Terminal plate unit	1
94	51 674 01	Connection plate	1
95	133 125	O-ring 6.1X1.6 NBR	2
96	50 037 34	O-ring 10.3X2.4 NBR	6
97	132 422	O-ring 219.3X5.7 NBR	1
98	410 087	O-ring 174.3X5.7 NBR	1
99	410 019	O-ring 159.3X5.7 NBR	1
104	51 059 00	Seal ring	1
105	51 800 00	Sticker	1
107	50 900 63	Single-core cable	1
		Contactor unit Terminal board	

Pos. No	Part. No	Denomination	Qty/Version
			181
107	50 900 69	Single-core cable	1
		Contactor unit	
		Terminal board	
107	50 900 68	Single-core cable	1
		Softstarter	
107	50 900 63	Single-core cable	2
		Contactor unit	
		Terminal board	
108	50 975 02	Con.term.board unit	1
		Terminal board Max 1000V 50/60Hz 3-phase 0V - 1000V CSA approved Motor cable conductor size max: 35mm ²	
108	50 993 47	Contactor unit	1
		50Hz 3-phase 220V - 240V Not CSA approved Overload supervision	
		50Hz 3-phase 220V - 240V Float switch Not CSA approved Overload supervision	
108,1	50 995 01	Holder	1
108,4	51 511 07	Motor protector SMART	1
108,5	410 762	Contactor	1
108,6	410 008	Hex.socket hd screw M4X16-A2-70	2
108,7	410 012	Lock nut	2
108,8	50 020 04	Hex.socket hd screw M6X20-A4-70	2
108,9	50 020 07	Lock nut M6-A4-70	2
108,17	50 900 62	Single-core cable	1
108,25	410 749	Overload relay	1
108,26	51 644 00	Holder	1
108,27	50 020 04	Hex.socket hd screw M6X20-A4-70	2
108,28	51 076 00	Cable set	1
108	50 993 48	Contactor unit	1
		50Hz 3-phase 380V - 400V Not CSA approved Overload supervision	
		50Hz 3-phase 380V - 400V Float switch Not CSA approved Overload supervision	
		50Hz 3-phase 415V - 440V Not CSA approved Overload supervision	
108,1	50 995 00	Holder	1
108,4	51 511 05	Motor protector SMART	1
108,5	410 816	Contactor	1
108,6	410 008	Hex.socket hd screw M4X16-A2-70	2

Pos. No	Part. No	Denomination	Qty/Version
			181
108,7	410 012	Lock nut	2
108,8	410 008	Hex.socket hd screw M4X16-A2-70	2
108,9	410 012	Lock nut	2
108,17	50 900 62	Single-core cable	1
108,25	410 822	Overload relay	1
108,28	51 076 00	Cable set	1
108	50 993 50	Contactor unit 50Hz 3-phase 500V - 500V Not CSA approved Overload supervision	1
108,1	50 995 00	Holder	1
108,4	51 511 05	Motor protector SMART	1
108,5	410 816	Contactor	1
108,6	410 008	Hex.socket hd screw M4X16-A2-70	2
108,7	410 012	Lock nut	2
108,8	410 008	Hex.socket hd screw M4X16-A2-70	2
108,9	410 012	Lock nut	2
108,17	50 900 62	Single-core cable	1
108,25	410 821	Overload relay	1
108,28	51 076 00	Cable set	1
108	50 993 55	Contactor unit 50Hz 3-phase 525V - 550V Not CSA approved Overload supervision	1
108,1	50 995 00	Holder	1
108,4	51 511 05	Motor protector SMART	1
108,5	410 901	Contactor	1
108,6	410 008	Hex.socket hd screw M4X16-A2-70	2
108,7	410 012	Lock nut	2
108,8	410 008	Hex.socket hd screw M4X16-A2-70	2
108,9	410 012	Lock nut	2
108,17	50 900 62	Single-core cable	1
108,25	410 896	Overload relay	1
108,28	51 076 00	Cable set	1
108	50 993 51	Contactor unit 60Hz 3-phase 220V - 240V CSA approved Overload supervision 60Hz 3-phase 220V - 240V Float switch CSA approved Overload supervision	1

Pos. No	Part. No	Denomination	Qty/Version
			181
108,1	50 995 01	Holder	1
108,4	51 511 08	Motor protector SMART	1
108,5	410 762	Contactator	1
108,6	410 008	Hex.socket hd screw M4X16-A2-70	2
108,7	410 012	Lock nut	2
108,8	50 020 04	Hex.socket hd screw M6X20-A4-70	2
108,9	50 020 07	Lock nut M6-A4-70	2
108,17	50 900 62	Single-core cable	1
108,25	410 750	Overload relay	1
108,26	51 644 00	Holder	1
108,27	50 020 04	Hex.socket hd screw M6X20-A4-70	2
108,28	51 076 00	Cable set	1
108	50 993 52	Contactator unit 60Hz 3-phase 380V - 400V CSA approved Overload supervision 60Hz 3-phase 380V - 400V Not CSA approved Overload supervision 60Hz 3-phase 380V - 400V Float switch Not CSA approved	1
108,1	50 995 00	Holder	1
108,4	51 511 06	Motor protector SMART	1
108,5	410 816	Contactator	1
108,6	410 008	Hex.socket hd screw M4X16-A2-70	2
108,7	410 012	Lock nut	2
108,8	410 008	Hex.socket hd screw M4X16-A2-70	2
108,9	410 012	Lock nut	2
108,17	50 900 62	Single-core cable	1
108,25	410 823	Overload relay	1
108,28	51 076 00	Cable set	1
108	50 993 37	Contactator unit 60Hz 3-phase 440V - 480V CSA approved Overload supervision	1
108,1	50 995 00	Holder	1
108,4	51 511 06	Motor protector SMART	1
108,5	410 816	Contactator	1
108,6	410 008	Hex.socket hd screw M4X16-A2-70	2

Pos. No	Part. No	Denomination	Qty/Version
			181
108,7	410 012	Lock nut	2
108,8	410 008	Hex.socket hd screw M4X16-A2-70	2
108,9	410 012	Lock nut	2
108,17	50 900 62	Single-core cable	1
108,25	410 822	Overload relay	1
108,28	51 076 00	Cable set	1
108	50 993 46	Contactor unit 60Hz 3-phase 575V - 600V CSA approved Overload supervision	1
108,1	50 995 00	Holder	1
108,4	51 511 06	Motor protector SMART	1
108,5	410 901	Contactor	1
108,6	410 008	Hex.socket hd screw M4X16-A2-70	2
108,7	410 012	Lock nut	2
108,8	410 008	Hex.socket hd screw M4X16-A2-70	2
108,9	410 012	Lock nut	2
108,17	50 900 62	Single-core cable	1
108,25	410 896	Overload relay	1
108,28	51 076 00	Cable set	1
108	50 993 58	Contactor unit 50Hz 3-phase 380V - 400V Float switch with isolated input Not CSA approved 50Hz 3-phase 415V - 440V Float switch with isolated input Not CSA approved Overload supervision	1
108,1	50 995 00	Holder	1
108,4	51 511 05	Motor protector SMART	1
108,5	410 816	Contactor	1
108,6	410 008	Hex.socket hd screw M4X16-A2-70	2
108,7	410 012	Lock nut	2
108,8	410 008	Hex.socket hd screw M4X16-A2-70	2
108,9	410 012	Lock nut	2
108,17	50 900 62	Single-core cable	1
108,22	410 034	Closed-end splice 3-6(AWG 12-10) L=18	1
108,25	410 822	Overload relay	1
108,28	51 076 00	Cable set	1

Pos. No	Part. No	Denomination	Qty/Version
			181
108,29	51 779 00	Supervision relay	1
108,30	50 457 00	Cable tie	1
108	50 993 59	Contacteur unit 50Hz 3-phase 500V - 500V Float switch with isolated input Not CSA approved Overload supervision	1
108,1	50 995 00	Holder	1
108,4	51 511 05	Motor protector SMART	1
108,5	410 816	Contacteur	1
108,6	410 008	Hex.socket hd screw M4X16-A2-70	2
108,7	410 012	Lock nut	2
108,8	410 008	Hex.socket hd screw M4X16-A2-70	2
108,9	410 012	Lock nut	2
108,17	50 900 62	Single-core cable	1
108,22	410 034	Closed-end splice 3-6(AWG 12-10) L=18	1
108,25	410 821	Overload relay	1
108,28	51 076 00	Cable set	1
108,29	51 779 00	Supervision relay	1
108,30	50 457 00	Cable tie	1
108	-	Contacteur unit	1
108,1	50 995 00	Holder	1
108,4	51 511 05	Motor protector SMART	1
108,5	410 901	Contacteur	1
108,6	410 008	Hex.socket hd screw M4X16-A2-70	2
108,7	410 012	Lock nut	2
108,8	410 008	Hex.socket hd screw M4X16-A2-70	2
108,9	410 012	Lock nut	2
108,17	50 900 62	Single-core cable	1
108,22	410 034	Closed-end splice 3-6(AWG 12-10) L=18	1
108,25	410 896	Overload relay	1
108,28	51 076 00	Cable set	1
108,29	51 779 00	Supervision relay	1
108,30	50 457 00	Cable tie	1
108	50 993 60	Contacteur unit 60Hz 3-phase 380V - 400V Float switch with isolated input CSA approved Overload supervision	1

Pos. No	Part. No	Denomination	Qty/Version
			181
108,1	50 995 00	Holder	1
108,4	51 511 06	Motor protector SMART	1
108,5	410 816	Contactactor	1
108,6	410 008	Hex.socket hd screw M4X16-A2-70	2
108,7	410 012	Lock nut	2
108,8	410 008	Hex.socket hd screw M4X16-A2-70	2
108,9	410 012	Lock nut	2
108,17	50 900 62	Single-core cable	1
108,22	410 034	Closed-end splice 3-6(AWG 12-10) L=18	1
108,25	410 823	Overload relay	1
108,28	51 076 00	Cable set	1
108,29	51 779 00	Supervision relay	1
108,30	50 457 00	Cable tie	1
108	50 993 56	Contactactor unit 60Hz 3-phase 440V - 480V Float switch with isolated input CSA approved Overload supervision	1
108,1	50 995 00	Holder	1
108,4	51 511 06	Motor protector SMART	1
108,5	410 816	Contactactor	1
108,6	410 008	Hex.socket hd screw M4X16-A2-70	2
108,7	410 012	Lock nut	2
108,8	410 008	Hex.socket hd screw M4X16-A2-70	2
108,9	410 012	Lock nut	2
108,17	50 900 62	Single-core cable	1
108,22	410 034	Closed-end splice 3-6(AWG 12-10) L=18	1
108,25	410 822	Overload relay	1
108,28	51 076 00	Cable set	1
108,29	51 779 00	Supervision relay	1
108,30	50 457 00	Cable tie	1
108	50 993 57	Contactactor unit 60Hz 3-phase 575V - 600V Float switch with isolated input CSA approved Overload supervision	1
108,1	50 995 00	Holder	1
108,4	51 511 06	Motor protector SMART	1
108,5	410 901	Contactactor	1

Pos. No	Part. No	Denomination	Qty/Version
			181
108,6	410 008	Hex.socket hd screw M4X16-A2-70	2
108,7	410 012	Lock nut	2
108,8	410 008	Hex.socket hd screw M4X16-A2-70	2
108,9	410 012	Lock nut	2
108,17	50 900 62	Single-core cable	1
108,22	410 034	Closed-end splice 3-6(AWG 12-10) L=18	1
108,25	410 896	Overload relay	1
108,28	51 076 00	Cable set	1
108,29	51 779 00	Supervision relay	1
108,30	50 457 00	Cable tie	1
108	51 747 01	Contactor unit	1
		50Hz 3-phase 380V - 400V Y/D Not CSA approved Overload supervision	
		50Hz 3-phase 380V - 400V Y/D Float switch Not CSA approved Overload supervision	
108,1	51 743 00	Holder	1
108,4	51 511 05	Motor protector SMART	1
108,5	410 909	Contactor	2
108,6	410 008	Hex.socket hd screw M4X16-A2-70	2
108,7	410 012	Lock nut	2
108,8	410 008	Hex.socket hd screw M4X16-A2-70	6
108,9	410 012	Lock nut	6
108,18	50 509 00	Cable set	1
108,25	410 897	Overload relay	1
108,28	51 744 01	Cable set	1
108,29	410 898	Interlock unit	1
108,30	410 899	Holder	1
108,31	50 148 02	Time relay	1
108	51 747 03	Contactor unit	1
		60Hz 3-phase 460V - 480V Y/D Not CSA approved Overload supervision	
108,1	51 743 00	Holder	1
108,4	51 511 06	Motor protector SMART	1
108,5	410 910	Contactor	2
108,6	410 008	Hex.socket hd screw M4X16-A2-70	2

Pos. No	Part. No	Denomination	Qty/Version
			181
108,7	410 012	Lock nut	2
108,8	410 008	Hex.socket hd screw M4X16-A2-70	6
108,9	410 012	Lock nut	6
108,18	50 509 00	Cable set	1
108,25	410 897	Overload relay	1
108,28	51 744 01	Cable set	1
108,29	410 898	Interlock unit	1
108,30	410 899	Holder	1
108,31	50 148 02	Time relay	1
109	51 639 02	Cable set	1
		Contactor unit	
		Terminal board	
		Softstarter	
109	51 639 02	Cable set	2
		Contactor unit	
		Terminal board	
		Softstarter	
110	410 026	Hex.socket hd screw M6X12-A4-70	2
110	410 026	Hex.socket hd screw M6X12-A4-70	4
111	410 171	Stud M12X35-A2-70	4
111	410 010	Hex.socket hd screw M8X12-A2-70	1
112	410 139	Insulating hose D=12 MM	*
113	51 318 03	Softstarter	1
113,1	410 008	Hex.socket hd screw M4X16-A2-70	1
113,2	50 018 00	Hex.socket hd screw M4X12-A4-70	2
113,3	50 018 00	Hex.socket hd screw M4X12-A4-70	2
113,4	410 012	Lock nut	1
113,5	410 012	Lock nut	2
113,6	410 012	Lock nut	2
113,7	51 003 02	Overload protector	1
113,8	50 221 00	End sleeve 0.75 MM ² ; L=6 MM	1
113,9	410 390	Thermal detectors	1
113,11	50 900 00	Single-core cable 1MM ² ,L=70	1
113,12	50 900 02	Electric cable	1
113,13	50 900 13	Single-core cable	1

Pos. No	Part. No	Denomination	Qty/Version
			181
113,14	50 900 13	Single-core cable	1
113,16	51 319 00	Holder	1
113,17	51 320 00	Clamp	1
113,18	51 321 00	Bracket	1
114	51 748 00	Sticker SOFTSTARTER PH.SEQ. GUARD	1
115	51 742 00	Terminal plate unit	1
117	410 077	Cable clamp STAINLESS STEEL, CR	1
118	51 726 06	Level regulator unit EU	1
		Contactor unit 50Hz 3- phase 380V - 400V Float switch with isolated input Not CSA approved	
		Contactor unit 50Hz 3- phase 500V - 500V Float switch with isolated input Not CSA approved Overload supervision	
		Contactor unit 50Hz 3- phase 220V - 240V Float switch Not CSA approved Overload supervision	
		Contactor unit 50Hz 3- phase 415V - 440V Float switch with isolated input Not CSA approved Overload supervision	
118,2	410 872	Flat pin sleeve	1
118,3	50 040 05	Insulating sleeve 0.5-6 MM2	1
118,4	50 221 01	End sleeve 1.5 MM2; L=7 MM	1
118,6	410 873	Cable lug UL/CSA 0.5-1.65 MM2	1
118,7	410 034	Closed-end splice 3-6(AWG 12-10) L=18	1
118,8	410 774	Level switch	1
118,9	410 370	Plain washer	2
118,10	51 278 00	Bending protection	1
118,11	410 367	Gland screw	1

Pos. No	Part. No	Denomination	Qty/Version
			181
118	51 726 08	Level regulator unit EU	1
		Contactor unit 50Hz 3-phase 380V - 400V Float switch Not CSA approved Overload supervision	
		Contactor unit 50Hz 3-phase 380V - 400V Y/D Float switch Not CSA approved Overload supervision	
		Softstarter 50Hz 3-phase 400V - 400V Float switch Not CSA approved Overload supervision	
		Contactor unit 60Hz 3-phase 380V - 400V Float switch Not CSA approved	
118,1	410 872	Flat pin sleeve	1
118,2	50 040 05	Insulating sleeve 0.5-6 MM2	1
118,3	50 221 01	End sleeve 1.5 MM2; L=7 MM	1
118,5	410 873	Cable lug UL/CSA 0.5-1.65 MM2	1
118,6	410 034	Closed-end splice 3-6(AWG 12-10) L=18	1
118,7	410 370	Plain washer	2
118,8	50 176 00	Level switch	1
118,9	51 278 00	Bending protection	1
118,10	410 367	Gland screw	1

Pos. No	Part. No	Denomination	Qty/Version
			181
118	51 726 07	Level regulator unit US/CDN	1
		Contactor unit 50Hz 3- phase 525V - 550V Float switch with isolated input Not CSA approved Overload supervision	
		Contactor unit 60Hz 3- phase 220V - 240V Float switch CSA approved Overload supervision	
		Contactor unit 60Hz 3- phase 575V - 600V Float switch with isolated input CSA approved Overload supervision	
		Contactor unit 60Hz 3- phase 440V - 480V Float switch with isolated input CSA approved Overload supervision	
		Contactor unit 60Hz 3- phase 380V - 400V Float switch with isolated input CSA approved Overload supervision	
118,2	410 872	Flat pin sleeve	1
118,3	50 040 05	Insulating sleeve 0.5-6 MM2	1
118,4	50 221 01	End sleeve 1.5 MM2; L=7 MM	1
118,6	410 873	Cable lug UL/CSA 0.5-1.65 MM2	1
118,7	410 034	Closed-end splice 3-6(AWG 12-10) L=18	1
118,9	410 868	Level switch	1
118,10	410 370	Plain washer	2
118,11	51 278 00	Bending protection	1
118,12	410 367	Gland screw	1
118,13	50 892 14	Connection plate	1
119	51 749 00	Bracket	1
120	410 010	Hex.socket hd screw M8X12-A2-70	1
121	50 021 37	Hexagon nut M8-A4-70	1
123	51 735 01	Sticker	2
123	51 735 00	Sticker	1
124	51 735 01	Sticker	2
125	50 086 00	Faston connector	1
126	410 872	Flat pin sleeve	1

Pos. No	Part. No	Denomination	Qty/Version
			181
127	50 040 05	Insulating sleeve 0.5-6 MM2	1
130	410 197	Hexagon head screw M12X35-A2-70	2
131	132 424	Plain washer 12-A2-170	2
132	410 026	Hex.socket hd screw M6X12-A4-70	2
134	50 902 00	Earthing plate	1
134	50 902 00	Earthing plate	2
135	132 334	Plain washer (30)-32 MM SUBCAB 4G2,5+2x1,5 17 - 18mm Max 750V SUBCAB 4G6 18 - 19mm Max 750V SUBCAB S3x2,5+3x2,5/3+S(4x0,5) 18 - 20mm Max 1000V SUBCAB 10AWG/4 18 - 19,70mm Max 600V SUBCAB 4G4 16 - 17mm Max 750V Screened 6x2,5+2x1,5 18,10 - 19,90mm Max 1000V	4

Pos. No	Part. No	Denomination	Qty/Version
			181
135	132 336	Plain washer (32)-34 MM	4
		SUBCAB S3x6+3x6/3+S(4x0,5) 20 - 22mm Max 1000V SUBCAB 7G6+S(2x0,5) 24 - 26mm Max 1000V SUBCAB 4G6+2x1,5 24 - 26mm Max 750V SUBCAB 4G16+S(2x0,5) 26 - 28mm Max 1000V SUBCAB 10AWG/3-2-1-GC 20,30 - 22,30mm Max 600V SUBCAB 12AWG/7 20 - 22mm Max 600V SUBCAB 8AWG/3-2-1-GC 27,20 - 29,20mm Max 600V SUBCAB S3x10+3x10/3+S(4x0,5) 24 - 26mm Max 1000V SUBCAB 4G4+2x1,5 20 - 22mm Max 750V SUBCAB 4G10+S(2x0,5) 24 - 26mm Max 1000V Power cable x 1 SUBCAB 7G4+2x1,5 24 - 26mm Max 750V SUBCAB 8AWG/4 24 - 26mm Max 600V	
135	132 312	Plain washer (33)-35 MM	4
		SUBCAB 4AWG/3-2-1-GC 32,80 - 34,80mm Max 600V	
136	410 113	Seal sleeve (17)-20 MM	2
		SUBCAB 4G2,5+2x1,5 17 - 18mm Max 750V SUBCAB 4G6 18 - 19mm Max 750V SUBCAB S3x2,5+3x2,5/3+S(4x0,5) 18 - 20mm Max 1000V SUBCAB 10AWG/4 18 - 19,70mm Max 600V Screened 6x2,5+2x1,5 18,10 - 19,90mm Max 1000V	
136	410 112	Seal sleeve (14)-17 MM	2
		SUBCAB 4G4 16 - 17mm Max 750V	

Pos. No	Part. No	Denomination	Qty/Version
			181
136	410 114	Seal sleeve (20)-23 MM	2
		SUBCAB S3x6+3x6/3+S(4x0,5) 20 - 22mm Max 1000V SUBCAB 10AWG/3-2-1-GC 20,30 - 22,30mm Max 600V SUBCAB 12AWG/7 20 - 22mm Max 600V SUBCAB 4G4+2x1,5 20 - 22mm Max 750V	
136	410 115	Seal sleeve (23)-26 MM	2
		SUBCAB 7G6+S(2x0,5) 24 - 26mm Max 1000V SUBCAB 4G6+2x1,5 24 - 26mm Max 750V SUBCAB S3x10+3x10/3+S(4x0,5) 24 - 26mm Max 1000V SUBCAB 4G10+S(2x0,5) 24 - 26mm Max 1000V SUBCAB 7G4+2x1,5 24 - 26mm Max 750V SUBCAB 8AWG/4 24 - 26mm Max 600V	
136	410 116	Seal sleeve (26)-29 MM	2
		SUBCAB 4G16+S(2x0,5) 26 - 28mm Max 1000V SUBCAB 8AWG/3-2-1-GC 27,20 - 29,20mm Max 600V	
136	410 118	Seal sleeve (32)-35 MM	2
		SUBCAB 4AWG/3-2-1-GC 32,80 - 34,80mm Max 600V	
137	51 249 04	Plate	1
138	51 025 02	Sleeve	1
139	51 033 04	Entrance flange	1
140	50 777 00	Motor cable subcab	*
		Power cable x 1 SUBCAB 4G2,5+2x1,5 17 - 18mm L= 20m Max 750V	
140	133 139	Motor cable subcab	*
		Power cable x 1 SUBCAB 4G4 16 - 17mm L= 20m Max 750V	
140	410 129	Motor cable subcab	*
		Power cable x 1 SUBCAB 4G4+2x1,5 20 - 22mm L= 20m Max 750V	
140	410 130	Motor cable subcab	*
		Power cable x 1 SUBCAB 7G4+2x1,5 24 - 26mm L= 20m Max 750V	
140	131 028	Motor cable subcab	*
		Power cable x 1 SUBCAB 4G6 18 - 19mm L= 20m Max 750V	

Pos. No	Part. No	Denomination	Qty/Version	
			181	
140	410 126	Motor cable subcab	Power cable x 1 SUBCAB 4G6+2x1,5 24 - 26mm L= 20m Max 750V	*
140	410 858	Motor cable subcab	Power cable x 1 SUBCAB 7G6+S(2x0,5) 24 - 26mm L= 20m Max 1000V	*
140	410 852	Motor cable subcab	Power cable x 1 SUBCAB 4G10+S(2x0,5) 24 - 26mm L= 20m Max 1000V	*
140	410 853	Motor cable subcab	Power cable x 1 SUBCAB 4G16+S(2x0,5) 26 - 28mm L= 20m Max 1000V	*
140	410 068	Motor cable subcab	Power cable x 1 SUBCAB 12AWG/7 20 - 22mm L= 16m Max 600V	*
140	410 132	Motor cable subcab	Power cable x 1 SUBCAB 10AWG/4 18 - 19,70mm L= 16m Max 600V	*
140	410 069	Motor cable	Power cable x 1 SUBCAB 10AWG/3-2-1-GC 20,30 - 22,30mm L= 16m Max 600V	*
140	410 133	Motor cable subcab	Power cable x 1 SUBCAB 8AWG/4 24 - 26mm L= 16m Max 600V	*
140	410 134	Motor cable	Power cable x 1 SUBCAB 8AWG/3-2-1-GC 27,20 - 29,20mm L= 16m Max 600V	*
140	410 136	Motor cable	Power cable x 1 SUBCAB 4AWG/3-2-1-GC 32,80 - 34,80mm L= 16m Max 600V	*
140	410 060	Motor cable	Power cable x 1 Screened 6x2,5+2x1,5 18,10 - 19,90mm L= 20m Max 1000V	*
140	410 860	Motor cable subcab	Power cable x 1 SUBCAB S3x2,5+3x2,5/3+S(4x0,5) 18 - 20mm L= 20m Max 1000V	*
140	410 861	Motor cable subcab	Power cable x 1 SUBCAB S3x6+3x6/3+S(4x0,5) 20 - 22mm L= 20m Max 1000V	*
140	410 862	Motor cable subcab	Power cable x 1 SUBCAB S3x10+3x10/3+S(4x0,5) 24 - 26mm L= 20m Max 1000V	*
141	410 086	O-ring 49.5X3 NBR		1

Pos. No	Part. No	Denomination	Qty/Version
			181
142	410 875	Cap 6X16 PVC	SUBCAB 7G6+S(2x0,5) 24 - 26mm Max 1000V SUBCAB 4G16+S(2x0,5) 26 - 28mm Max 1000V SUBCAB 4G10+S(2x0,5) 24 - 26mm Max 1000V
142	410 874	Cap 5X10 MM PVC	SUBCAB S3x6+3x6/3+S(4x0,5) 20 - 22mm Max 1000V SUBCAB S3x2,5+3x2,5/3+S(4x0,5) 18 - 20mm Max 1000V
142	410 876	Cap 7X16 PVC	SUBCAB S3x10+3x10/3+S(4x0,5) 24 - 26mm Max 1000V
143	410 879	Cap 25X45 MM PVC	SUBCAB 7G6+S(2x0,5) 24 - 26mm Max 1000V
143	410 878	Cap 24X45 MM PVC	SUBCAB 4G10+S(2x0,5) 24 - 26mm Max 1000V
143	410 880	Cap 26X45 MM PVC	SUBCAB 4G16+S(2x0,5) 26 - 28mm Max 1000V
143	410 629	Cap 18X25 MM PVC	SUBCAB S3x2,5+3x2,5/3+S(4x0,5) 18 - 20mm Max 1000V
143	410 631	Cap 21X45 MM PVC	SUBCAB S3x6+3x6/3+S(4x0,5) 20 - 22mm Max 1000V
143	410 877	Cap 23X45 MM PVC	SUBCAB S3x10+3x10/3+S(4x0,5) 24 - 26mm Max 1000V
144	50 221 00	End sleeve 0.75 MM ² ; L=6 MM	SUBCAB S3x6+3x6/3+S(4x0,5) 20 - 22mm L= 20m Max 1000V SUBCAB 7G6+S(2x0,5) 24 - 26mm L= 20m Max 1000V SUBCAB 4G16+S(2x0,5) 26 - 28mm L= 20m Max 1000V SUBCAB S3x2,5+3x2,5/3+S(4x0,5) 18 - 20mm L= 20m Max 1000V SUBCAB S3x10+3x10/3+S(4x0,5) 24 - 26mm L= 20m Max 1000V SUBCAB 4G10+S(2x0,5) 24 - 26mm L= 20m Max 1000V

Pos. No	Part. No	Denomination	Qty/Version	
			181	
144	50 221 03	End sleeve 4 MM ² ; L=10 MM	SUBCAB 4AWG/3-2-1-GC 32,80 - 34,80mm L= 16m Max 600V	3
144	50 221 05	End sleeve 10 MM ² ; L=12 MM	SUBCAB 4AWG/3-2-1-GC 32,80 - 34,80mm L= 16m Max 600V	1
144	50 221 07	End sleeve 25 MM ² ; L=15 MM	SUBCAB 4AWG/3-2-1-GC 32,80 - 34,80mm L= 16m Max 600V	3
145	410 881	Closed-end splice 0.33-0.82(AWG 22-18) L=18	SUBCAB S3x6+3x6/3+S(4x0,5) 20 - 22mm L= 20m Max 1000V SUBCAB 7G6+S(2x0,5) 24 - 26mm L= 20m Max 1000V SUBCAB 4G16+S(2x0,5) 26 - 28mm L= 20m Max 1000V SUBCAB S3x2,5+3x2,5/3+S(4x0,5) 18 - 20mm L= 20m Max 1000V SUBCAB S3x10+3x10/3+S(4x0,5) 24 - 26mm L= 20m Max 1000V SUBCAB 4G10+S(2x0,5) 24 - 26mm L= 20m Max 1000V	2
145	410 034	Closed-end splice 3-6(AWG 12-10) L=18	SUBCAB S3x6+3x6/3+S(4x0,5) 20 - 22mm L= 20m Max 1000V SUBCAB S3x2,5+3x2,5/3+S(4x0,5) 18 - 20mm L= 20m Max 1000V SUBCAB S3x10+3x10/3+S(4x0,5) 24 - 26mm L= 20m Max 1000V	1
146	410 873	Cable lug UL/CSA 0.5-1.65 MM ²		1
147	410 917	Shrink hose ID=12 MM		*
148	410 918	Shrink hose ID=3.2 MM		*
148	410 994	Shrink hose		*
151	50 020 04	Hex.socket hd screw M6X20-A4-70		2
151	410 026	Hex.socket hd screw M6X12-A4-70		2
153	410 054	Shrink hose ID=6.4 MM		*
153	410 122	Shrink hose ID=9.5 MM		*

Pos. No	Part. No	Denomination	Qty/Version
			181
154	132 195	Plug contact	1
		3-phase 50 Hz 380V - 415V Current range: 0 - 63A Plug combined with short cable: No cable Supply connection: CEE 5-PLUG 63A Starter (Phase shifter) 3- phase 50/60 Hz 380V - 415V Current range: 0 - 48A Plug combined with short cable: SUBCAB 4G6 Supply connection: CEE 5- PLUG 63A	
154	410 685	Plug contact	1
		3-phase 50 Hz 380V - 415V Current range: 0 - 32A Plug combined with short cable: No cable Supply connection: CEE 4-PLUG 32A	
155	50 102 02	Phase shifter	1
166	410 011	Hexagon nut M12-A4-70	4
167	132 424	Plain washer 12-A2-170	4
168	50 897 00	U-ring	1
169	50 919 00	Discharge connection	1
169	50 919 01	Discharge connection	1
		DN 100 Hose 4" aluminium	
		DN 100 Thread : ISO G4A Outer Quick coupling: Storz aluminium	
		DN 100 Thread : ISO G4A Outer aluminium	
		DN 100 Thread : ISO G4A Outer Quick coupling: Storz diam=115 mm aluminium	
169	50 919 03	Discharge connection	1
		DN 100 Thread : Victaulic groove Outer aluminium	
169	50 919 02	Discharge connection	1
		DN 100 Thread : NPT 4-8 Outer aluminium	
169	51 038 05	Discharge connection	1
169	51 038 06	Discharge connection	1
		DN 150 Hose 6" aluminium	
		DN 150 Thread : ISO G6A Outer Quick coupling: Storz aluminium	
		DN 150 Thread : ISO G6A Outer aluminium	
169	51 038 09	Discharge connection	1
		DN 150 Thread : Victaulic groove Outer aluminium	
169	51 038 08	Discharge connection	1
		DN 150 Thread : NPT 6-8 Outer aluminium	
170	410 030	Coupling part	1
		Discharge Connection DN 100 Thread : ISO G4A Outer Quick coupling: Storz aluminium	

Pos. No	Part. No	Denomination		Qty/Version
				181
170	410 029	Coupling part	Discharge Connection DN 100 Thread : ISO G4A Outer Quick coupling: Storz diam=115 mm aluminium	1
170	410 099	Coupling part	Discharge Connection DN 150 Thread : ISO G6A Outer Quick coupling: Storz aluminium	1
175	50 086 00	Faston connector	Contacteur unit	1
175	410 780	Terminal device 48X12X6 MAX.380V 18A	Contacteur unit	1
176	410 872	Flat pin sleeve		1
177	50 040 05	Insulating sleeve 0.5-6 MM2		1
800	51 776 00	O-ring kit	FPM	1
801	51 081 00	Zinc anode kit		1
801	-	Anode unit		1
801	-	Anode unit		2
900	51 784 00	Basic repair kit	FPM PLUGIN 35MM RSIC/ RSIC;WCCR/WCCR	1
900,1	410 100	Ball bearing 30X72X30.2 MM		1
900,2	410 101	Ball bearing 40X90X36.5 MM		1
900,3	410 106	Pressure equalizer L=310 MM		2
900,4	51 745 51	Mechanical seal		1
900,5	51 776 00	O-ring kit		1
900,6	51 829 00	Sticker		1



Grindex
Gesällvägen 33
174 07 Sundbyberg
Sweden
Tel: +46-8-606 66 00
Fax: +46-8-745 53 28
www.grindex.com

Visit our Web site for the latest version of this document
and more information

The original instruction is in English. All non-English
instructions are translations of the original instruction.

© 2012 Grindex